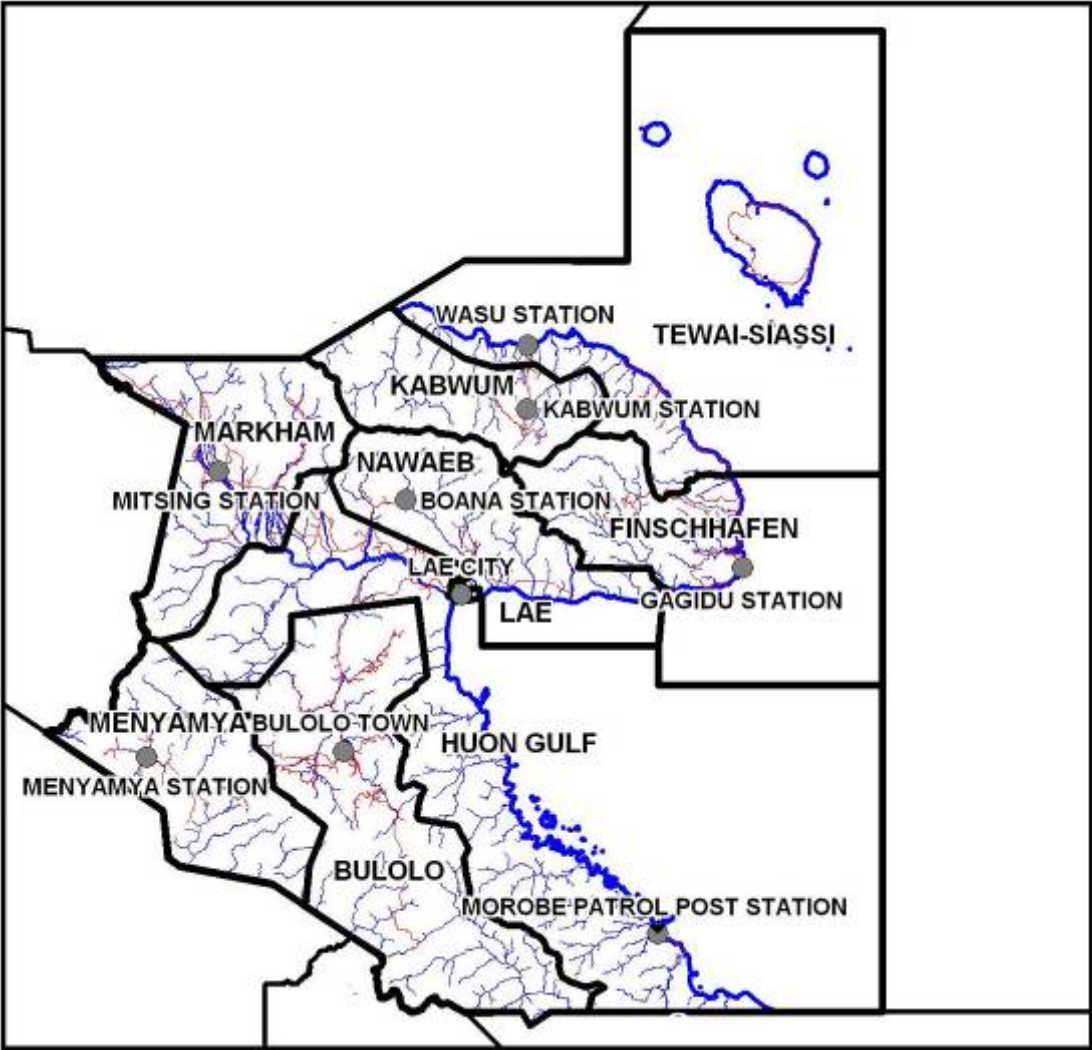


Morobe Province



Morobe Province

General Information

Administration

Provincial headquarters: Lae
Number of districts: 9 - Bulolo, Finschhafen, Huon Gulf, Kabwum, Lae, Markham, Menyamya, Nawae, Tewai Siassi
Number of LLGs: 33
Number of wards: 547

Population

		Male (%)	Female (%)
Total	539404	52.0	48.0
< 15 years	216396	52.4	47.6
15-64 years	311857	51.7	48.3
> 65 years	11151	52.0	48.0
Citizen households	95774		

Area and population density

Area (km ²)	33705
Occupied area (km ²)	11708
Population per km ²	16.0
Population per km ² of occupied area	46.1

Average annual population growth rate (1980-2000): 2.8

About Morobe

Morobe Province stretches from the Sarawaget Range in the north along the Huon Peninsula to the east and through the Markham Valley in the centre of the province. The Bulolo and Watut Valleys run north-south, with the Ekuti and Owen Stanley Ranges in the south.

The provincial member is Mr. Luther Wenge of the Pipol First Party. This is his third term.

High agricultural incomes from the sale of betel nut and fresh food can be earned by those living in the Markham and Watut Valleys. More moderate incomes can be earned from fish, food, coconut and betel nut in the coastal areas around Lae. More remote areas earn very low incomes. Other sources of income are also available from mining near Wau, forestry near Bulolo and cattle in the Markham Valley.

The Highlands Highway and a road between Lae and Wau provide reasonable road access in the province. Roads along the Huon Peninsula do not connect to Lae, making water transport more common, which becomes dangerous in the wet season. The very north of the province in Kabwum District and south of the province, around Garaina are very remote.

Electoral statistics

Eligible voters (2000 Census)	287749
Number of votes cast (2002)	213772
2002 Electoral Roll	462341
Number of votes cast (2007)	227441
2007 Electoral Roll	356772

Education

Type and number of schools

Elementary	509
Community	88
Primary	222
Provincial high	11
Secondary	7
Vocational	7

Universal basic education indicators (%)

Net admission rate	9.2%
Gross enrolment rate	69.9%
Net enrolment rate	50.0%

Literacy rate (%)

Total	Male	Female
63.6	69.5	57.3

Health

Number and population per facility

Health centres	39	13831
Aid posts	219	2463

Number and population per officer

Medical officers	56	9632
Nursing officers	310	1740

Mortality rates (per 1000)

Under 5 mortality rate	118
Infant mortality rate (under 1 year)	80
Child mortality rate (1-4 years of age)	38

Life expectancy (years)

Total	Male	Female
51.7	51.2	52.3

Economic Activity

Top agricultural activities of citizen households

	% engaged	%* engaged for cash
Food crops	69.2	12.5
Betel nut	59.4	25.4
Coffee	45.7	44.5
Coconut	36.9	9.3
Livestock	34.5	9.1

*of total citizen households

Infrastructure

Electricity customers	12136
Percent of population within 5km of a national road	34.4

Bulolo District

General Information

Administration

District headquarters: Bulolo
Number of LLGs: 6 - Mumeng Rural, Waria Rural, Watut Rural, Wau Bulolo Urban, Wau Rural, Buang Rural
Number of wards: 108

Population

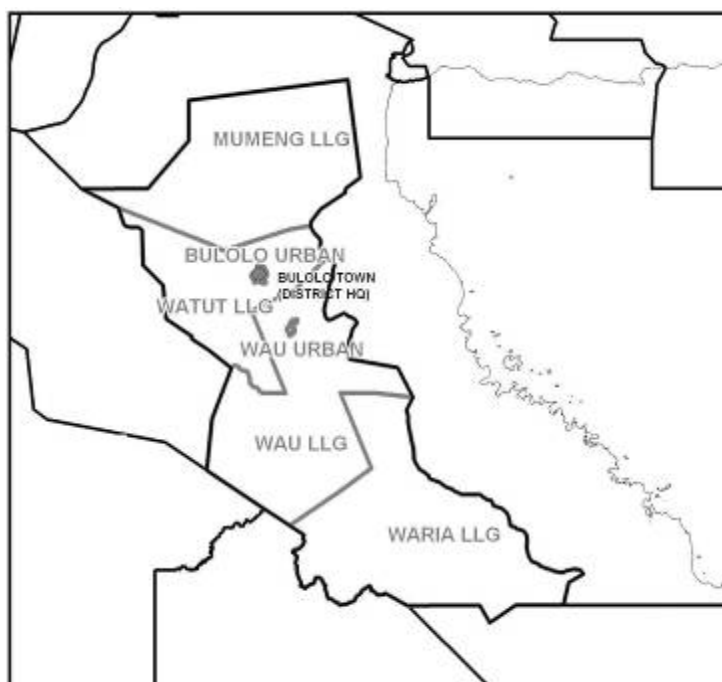
		Male (%)	Female (%)
Total	77232	53.3	46.7
< 15 years	31716	52.4	47.6
15-64 years	43663	53.8	46.2
> 65 years	1853	56.8	43.2
Citizen households	13698		

Area and population density

Area (km ²)	7180
Occupied area (km ²)	1983
Population per km ²	10.8
Population per km ² of occupied area	38.9

Electoral statistics

Eligible voters (2000 Census)	40468
Number of votes cast (2002)	33727
Number of votes cast (2007)	34452



About Bulolo

Bulolo District encompasses the Watut, Snake and Bulolo Valleys in the north and the Waria Valley, Kuper Range and Kodama Range in the south.

The district member is Mr. Sam Basil, of the People's Progress Party. The member between 2002 and 2007 was Mr. John Muingnepe.

High incomes from the sale of food and coffee are available in the Snake Valley, medium incomes and some wage-earning opportunities in mining and forestry are available near Wau and Bulolo, while incomes in the south of the district are very low.

Education

Type and number of schools

Elementary	62
Community	11
Primary	31
Provincial high school	1
Vocational	1

Universal basic education indicators

Net admission rate	5.3%
Gross enrolment rate	58.0%
Net enrolment rate	40.1%

Literacy rate

Total	Male (%)	Female (%)
52.3	58.2	45.3

Health

Number and population per officer

Medical officers	0	n/a
Nursing officers	11	7021

Number and population per facility

Health centres	4	19308
Aid posts	42	1839

Infrastructure

Road access

While road access between Wau, Bulolo and Lae is reasonable, there is no road to the south of the district. Those in the Watut and Waria Valleys and surrounding mountains must travel up to eight hours to a service centre.

Economic Activity

Top agricultural activities of citizen households

	% engaged	%* engaged for cash
Food crops	70.2	13.3
Coffee	50.8	47.9
Betel nut	42.7	16.7
Coconut	27.9	5.0
Livestock	19.7	5.8

*of total citizen households

Finschhafen District

General Information

Administration

District headquarters: Gagidu
Number of LLGs: 5 - Hube Rural, Kottee Rural, Yabim Mape Rural Finschhafen Urban Burum Kuat Rural
Number of wards: 57

Population

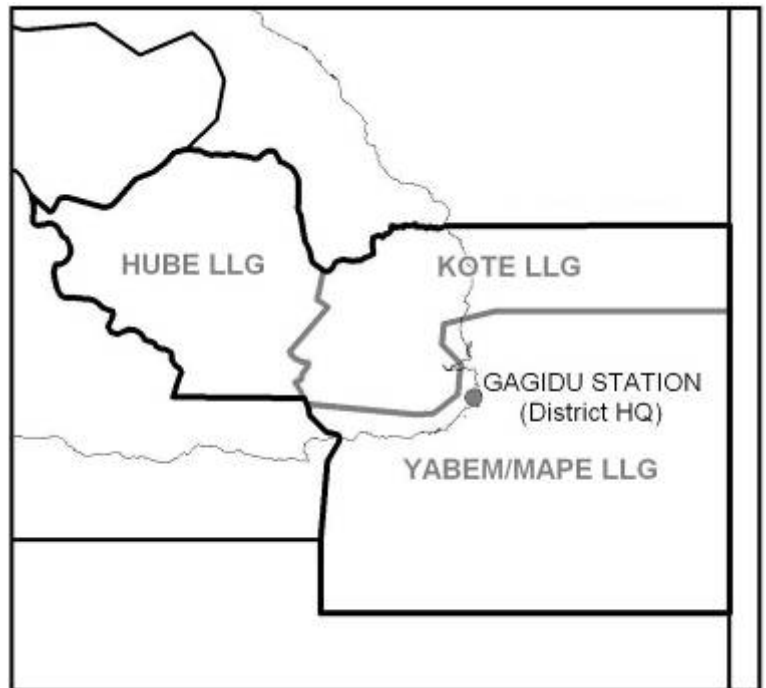
		Male (%)	Female (%)
Total	45287	49.9	50.1
< 15 years	18484	51.8	48.2
15-64 years	25390	48.3	51.7
> 65 years	1413	52.4	47.6
Citizen households	8847		

Area and population density

Area (km ²)	2642
Occupied area (km ²)	1303
Population per km ²	17.1
Population per km ² of occupied area	34.8

Electoral statistics

Eligible voters (2000 Census)	23827
Number of votes cast (2002)	22857
Number of votes cast (2007)	22348



About Finschhafen

Finschhafen District occupies the end of the Huon Peninsula. It includes the Cromwell Mountains and the valleys of the Song, Mape, Mongi, Kua and Bulum Rivers.

The district member is Mr. Theo Zurenuoc. He was elected as an independent but is now a member of the People's Progress Party. The member between 2002 and 2007 was Mr. Guoa Zurenuoc.

Incomes are very low in the entire district. Land potential is moderate to low and combined with poor transport access offers few potential livelihoods.

Education

Type and number of schools

Elementary	56
Community	10
Primary	28
Provincial high school	1
Vocational	1

Universal basic education indicators

Net admission rate	9.3%
Gross enrolment rate	77.5%
Net enrolment rate	53.8%

Literacy rate

Total	Male (%)	Female (%)
75.4	80.3	70.6

Health

Number and population per officer

Medical officers	2	22644
Nursing officers	26	1742

Number and population per facility

Health centres	5	9057
Aid posts	24	1887

Infrastructure

Road access

There are some roads running along the coast and inland. However, there is no road connection to Lae. Water transport is common but conditions are dangerous in the wet season. Passenger ships run between Lae and Finschhafen.

Economic Activity

Top agricultural activities of citizen households

	% engaged	%* engaged for cash
Food crops	84.3	16.6
Betel nut	70.0	44.8
Coffee	67.5	66.1
Livestock	47.9	14.6
Coconut	36.1	17.9

*of total citizen households

Huon Gulf District

General Information

Administration

District headquarters: Salamaua
Number of LLGs: 3 - Morobe Rural, Salamaua Rural, Wampar Rural
Number of wards: 64

Population

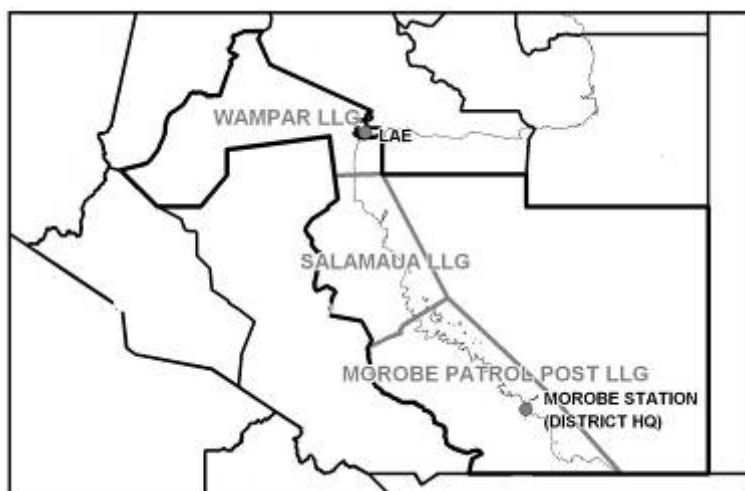
		Male (%)	Female (%)
Total	59523	53.1	46.9
< 15 years	23202	52.9	47.1
15-64 years	35102	53.3	46.7
> 65 years	1219	50.7	49.3
Citizen households	10603		

Area and population density

Area (km ²)	7401
Occupied area (km ²)	1906
Population per km ²	8.0
Population per km ² of occupied area	31.2

Electoral statistics

Eligible voters (2000 Census)	32554
Number of votes cast (2002)	24030
Number of votes cast (2007)	27221



About Huon Gulf

Huon Gulf District runs from the inland areas in the centre of Morobe Province, down the south coast to the border of Oro Province. It covers the lower Markham, Watut and Ramu Valleys in the north and the coastal plains in the south.

The district member is Mr. Sasa Zibe, of the National Alliance Party. He is the Minister for Health and HIV/AIDS. This is his second term.

High incomes from the sale of food and betel nut can be earned in the north, while moderate incomes can be earned on the coast selling food, coconut and fish in markets in Lae.

Education

Type and number of schools

Elementary	55
Community	14
Primary	32
Provincial high school	1
Vocational	1

Universal basic education indicators

Net admission rate	12.7%
Gross enrolment rate	70.6%
Net enrolment rate	53.6%

Literacy rate

Total	Male (%)	Female (%)
73.5	78.0	68.4

Health

Number and population per officer

Medical officers	0	n/a
Nursing officers	7	8503

Number and population per facility

Health centres	4	14881
Aid posts	28	2126

Infrastructure

Road access

In the north, the Highlands Highway runs from Lae going west, however there are no roads going south. Water transport in small boats is common on the coast but can be seasonally dangerous.

Economic Activity

Top agricultural activities of citizen households

	% engaged	%* engaged for cash
Betel nut	76.7	47.3
Coconut	70.9	16.3
Food crops	68.6	16.1
Fishing	28.1	8.1
Livestock	22.8	4.8

*of total citizen households

Kabwum District

General Information

Administration

District headquarters: Kabwum
Number of LLGs: 4 - Deyamos Rural, Selepet Rural, Yus Rural, Komba Rural
Number of wards: 67

Population

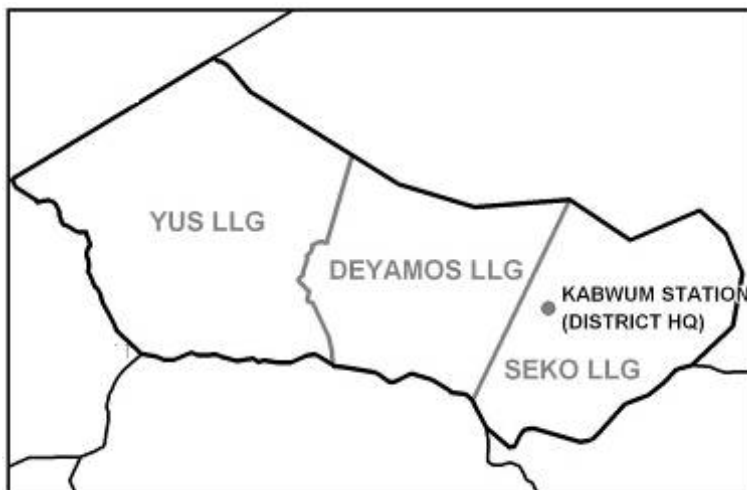
		Male (%)	Female (%)
Total	41883	47.9	52.1
< 15 years	17013	51.3	48.7
15-64 years	23567	45.2	54.8
> 65 years	1303	51.3	48.7
Citizen households	8050		

Area and population density

Area (km ²)	2778
Occupied area (km ²)	983
Population per km ²	15.1
Population per km ² of occupied area	42.6

Electoral statistics

Eligible voters (2000 Census)	22163
Number of votes cast (2002)	20345
Number of votes cast (2007)	19654



About Kabwum

Kabwum District covers the north side of the Sarawaget Range. This includes the Yapna, Urawa, Som, Timbe and Kwama Rivers.

The district member is Mr. Bob Dadae, a member of the United Party. He is the Minister for Defence. This is his second term.

Income is low throughout the district, because of isolation from service centres. There is no land in the district with a particularly high potential for cultivation, food security is a concern and people have limited cash to purchase supplementary food.

Education

Type and number of schools

Elementary	52
Community	14
Primary	19
Provincial high school	1
Vocational	0

Universal basic education indicators

Net admission rate	7.0%
Gross enrolment rate	111.9%
Net enrolment rate	55.8%

Literacy rate

Total	Male (%)	Female (%)
51.0	59.2	43.8

Health

Number and population per officer

Medical officers	0	n/a
Nursing officers	5	8377

Number and population per facility

Health centres	3	13961
Aid posts	26	1611

Infrastructure

Road access

There is a road from Wasu in Tewai-Siassi District to Kabwum. However, some areas are very remote from Kabwum and more so from major service centres. Coastal travel is by small boats, which can be dangerous in the wet season.

Economic Activity

Top agricultural activities of citizen households

	% engaged	%* engaged for cash
Coffee	93.9	92.1
Food crops	89.8	3.8
Livestock	74.5	7.0
Betel nut	35.7	8.9
Poultry	30.9	3.1

*of total citizen households

Lae District

General Information

Administration

District headquarters: Lae
Number of LLGs: 2 - Ahi Rural, Lae Urban
Number of wards: 25

Population

		Male (%)	Female (%)
Total	119178	54.7	45.3
< 15 years	42359	53.0	47.0
15-64 years	75746	55.5	44.5
> 65 years	1073	62.1	37.9
Citizen households	17795		

Area and population density

Area (km ²)	
Occupied area (km ²)	n/a
Population per km ²	
Population per km ² of occupied area	

Electoral statistics

Eligible voters (2000 Census)	68114
Number of votes cast (2002)	*18132
Number of votes cast (2007)	24502

*figure does not include informal votes. If known, this would increase total by somewhere between 100-500 votes.

Map unavailable

About Lae

Lae District covers the largest urban centre of Papua New Guinea outside of Port Moresby and is a major commercial and industrial hub.

The district member is Mr. Bart Philemon, of the New Generation Party. He has been the member since 1992.

Incomes are high from the sale of a range of goods in markets as well as many non-agricultural opportunities in Lae's commercial sector. There is very little rural, agricultural activity in this small, urban district.

Education

Type and number of schools

Elementary	57
Community	0
Primary	20
Provincial high school	2
Vocational	2

Universal basic education indicators

Net admission rate	16.1%
Gross enrolment rate	68.5%
Net enrolment rate	57.2%

Literacy rate

Total	Male (%)	Female (%)
85.1	88.1	81.5

Health

Number and population per officer

Medical officers	54	2207
Nursing officers	223	534

Number and population per facility

Health centres	9	13242
Aid posts	4	29795

Infrastructure

Road access

Lae is a major service and market centre for goods and people travelling in from the Highlands Region and the districts of Morobe Province. There is also commercial shipping along the coast and to the New Guinea Islands.

Economic Activity

Top agricultural activities of citizen households

	% engaged	%* engaged for cash
Betel nut	40.1	16.8
Coconut	35.7	7.6
Food crops	27.8	10.3
Poultry	9.9	6.7
Livestock	6.4	2.6

*of total citizen households

Markham District

General Information

Administration

District headquarters: Kaiapit
Number of LLGs: 3 – Onga Waffa Rural, Umi Atzera Rural, Wantoat Leron Rural
Number of wards: 63

Population

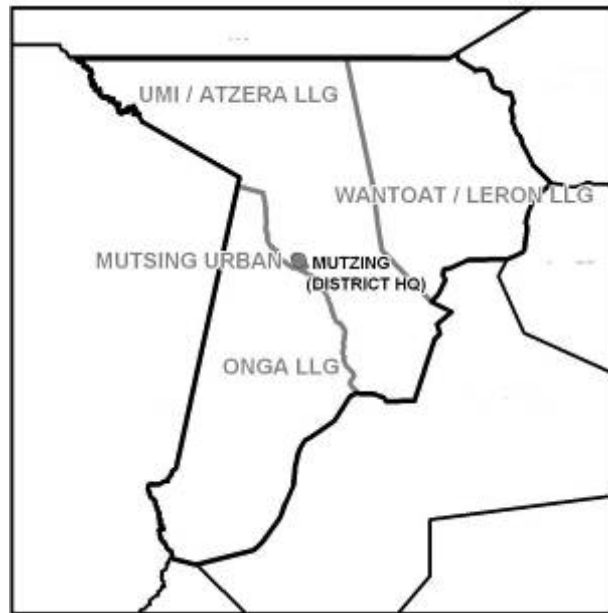
		Male (%)	Female (%)
Total	49369	51.3	48.7
< 15 years	19429	53.1	46.9
15-64 years	29006	50.3	49.7
> 65 years	934	45.4	54.6
Citizen households	9210		

Area and population density

Area (km ²)	4311
Occupied area (km ²)	1352
Population per km ²	11.5
Population per km ² of occupied area	36.5

Electoral statistics

Eligible voters (2000 Census)	26807
Number of votes cast (2002)	22051
Number of votes cast (2007)	25591



About Markham

Markham District covers the Upper Ramu and Markham Valleys, including the Leron, Mami, Ufim, Ikwap and Wontaop Rivers. The Sarawaget Range is in the north, as are the Wanton and Wafu Valleys.

The district member is Mr. Koni Iguan, a member of the People's Labor Party. The member between 2002 and 2007 was Mr. Andrew Baing.

Both the Markham and Ramu Valleys offer moderate to high land potential and good access to markets, with some small-holder activities. Incomes are therefore high from the sale of food and betel nut. However, incomes are low in the rest of the district, particularly in more mountainous areas.

Education

Type and number of schools

Elementary	52
Community	13
Primary	22
Provincial high school	0
Vocational	1

Universal basic education indicators

Net admission rate	7.1%
Gross enrolment rate	66.2%
Net enrolment rate	48.7%

Literacy rate

Total	Male (%)	Female (%)
54.1	62.8	45.2

Health

Number and population per officer

Medical officers	0	n/a
Nursing officers	6	8228

Number and population per facility

Health centres	2	24685
Aid posts	24	2057

Infrastructure

Road access

There is good road accessibility in the centre of the district, where the Highlands Highway runs through. A road to Wantoat in the north allows for travel to Lae in less than eight hours. However, those in the south of the district are quite remote.

Economic Activity

Top agricultural activities of citizen households

	% engaged	%* engaged for cash
Food crops	78.9	21.3
Betel nut	78.5	46.7
Coconut	63.2	7.1
Livestock	45.0	16.0
Coffee	41.1	40.7

*of total citizen households

Menyamyama District

General Information

Administration

District headquarters: Menyamyama
Number of LLGs: 4 - Kapao Rural, Koma Rural, Wapi Rural, Nanima
Number of wards: 60

Population

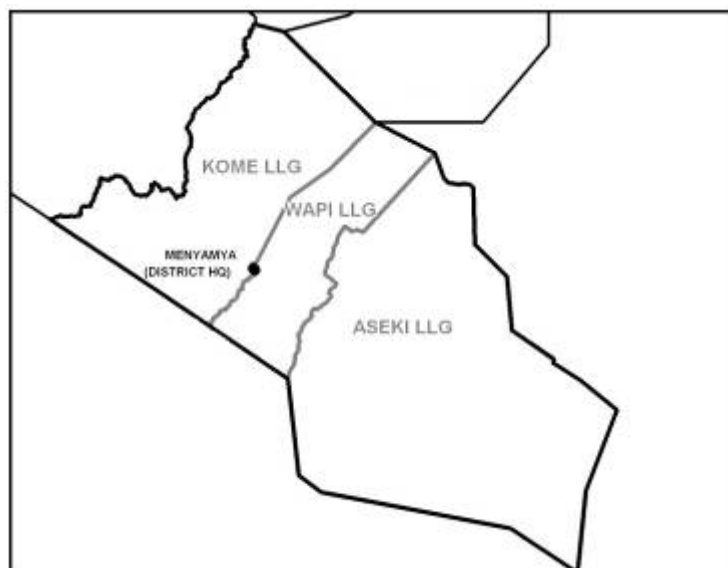
		Male (%)	Female (%)
Total	68546	50.9	49.1
< 15 years	32873	52.3	47.7
15-64 years	34769	49.3	50.7
> 65 years	904	61.6	38.4
Citizen households	13489		

Area and population density

Area (km ²)	3729
Occupied area (km ²)	2146
Population per km ²	18.4
Population per km ² of occupied area	31.9

Electoral statistics

Eligible voters (2000 Census)	31949
Number of votes cast (2002)	26690
Number of votes cast (2007)	27286



About Menyamyama

Menyamyama District, on the south western border of Morobe Province, shares a border with Eastern Highlands and Gulf Provinces. It lies over the main mountain divide of PNG, with the Tauri River flowing south to the gulf and the Watut River flowing north.

The district member is Mr. Benjamin Philip, a member of the Rural Development Party. The member between 2002 and 2007 was Mr. Teta Geoka.

Average incomes across the whole district are low. Land potential is poor in most of the district and remoteness from markets is a major handicap.

Education

Type and number of schools

Elementary	56
Community	6
Primary	18
Provincial high school	1
Vocational	1

Universal basic education indicators

Net admission rate	5.1%
Gross enrolment rate	47.7%
Net enrolment rate	34.6%

Literacy rate

Total	Male (%)	Female (%)
26.1	34.2	17.7

Health

Number and population per officer

Medical officers	0	n/a
Nursing officers	12	5712

Number and population per facility

Health centres	5	13709
Aid posts	20	3427

Infrastructure

Road access

A road links Aseki with Bulolo. However, people in the district are still up to eight hours travel to a service centre. A very poor road also leads to Marawaka in Eastern Highlands Province.

Economic Activity

Top agricultural activities of citizen households

	% engaged	%* engaged for cash
Coffee	87.0	85.9
Food crops	79.1	5.9
Betel nut	72.3	11.6
Livestock	37.2	14.9
Poultry	15.1	3.6

*of total citizen households

Nawae District

General Information

Administration

District headquarters: Boana
Number of LLGs: 3 - Labuta Rural, Nabak Rural, Wain-Erap Rural
Number of wards: 46

Population

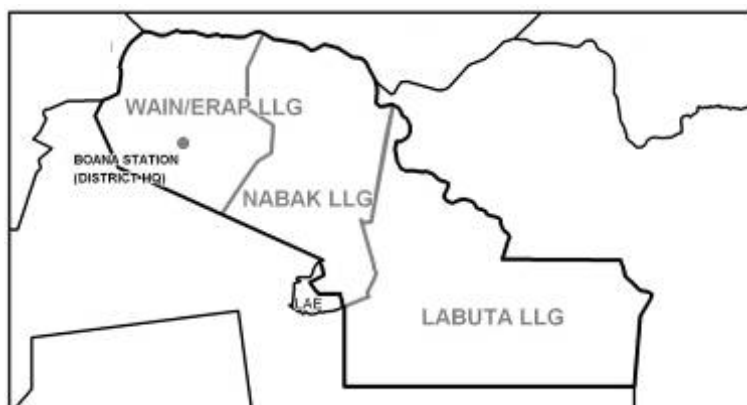
		Male (%)	Female (%)
Total	35059	51.2	48.8
< 15 years	13844	52.5	47.5
15-64 years	20150	50.1	49.9
> 65 years	1065	53.4	46.6
Citizen households	6430		

Area and population density

Area (km ²)	3129
Occupied area (km ²)	968
Population per km ²	11.2
Population per km ² of occupied area	36.2

Electoral statistics

Eligible voters (2000 Census)	19011
Number of votes cast (2002)	24849
Number of votes cast (2007)	25849



About Nawae

Nawae District stretches north and east from Lae. In the east, it includes the coast of Bukaua. In the north, it covers parts of the Rawlinson and Sarawaget Ranges and numerous river valleys.

The district member is Mr. Timothy Bonga, who contested the 2007 elections as an independent but is now a member of the National Alliance Party. The member between 2002 and 2007 was Mr. Wesley Zurenuoc.

While moderate incomes from betel nut, cocoa, coconut and fish can be earned on the coast, low incomes are earned in the majority of the district from sales of food and coffee, and very low incomes are earned in the most remote inland areas.

Education

Type and number of schools

Elementary	55
Community	6
Primary	26
Provincial high school	1
Vocational	0

Universal basic education indicators

Net admission rate	3.5%
Gross enrolment rate	78.3%
Net enrolment rate	53.4%

Literacy rate

Total	Male (%)	Female (%)
71.5	74.8	68.1

Health

Number and population per officer

Medical officers	0	n/a
Nursing officers	5	7012

Number and population per facility

Health centres	2	17530
Aid posts	19	1845

Infrastructure

Road access

Most of the district has decent transport access to Lae. The Boana area has a road running from the Highlands Highway in the Markham Valley. A road along the coast is frequently closed and water transport is common.

Economic Activity

Top agricultural activities of citizen households

	% engaged	%* engaged for cash
Food crops	83.9	16.1
Betel nut	63.5	22.0
Coffee	57.0	54.7
Livestock	49.9	6.5
Coconut	43.5	6.6

*of total citizen households

Tewai-Siassi District

General Information

Administration

District headquarters: Sialum
Number of LLGs: 3 - Sialum Rural, Siassi Rural, Wasu Rural
Number of wards: 57

Population

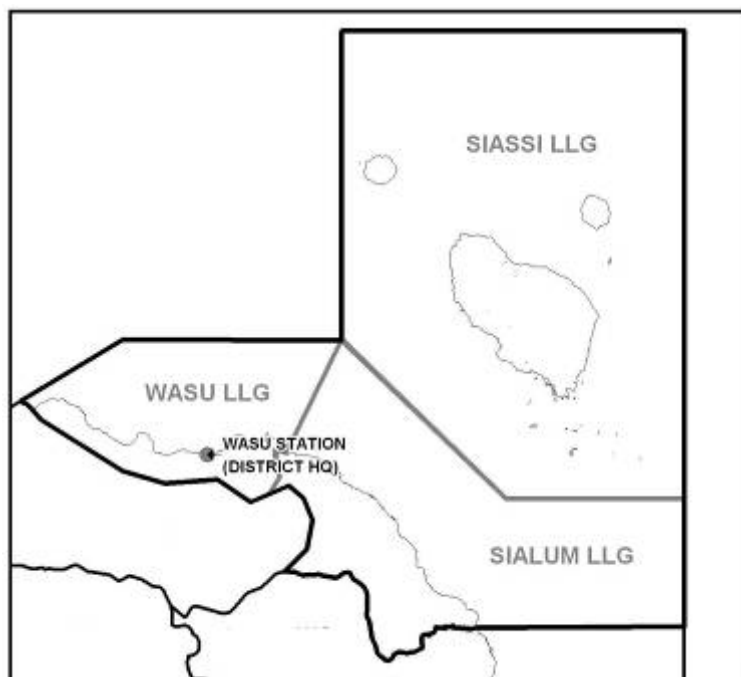
		Male (%)	Female (%)
Total	43327	50.8	49.2
< 15 years	17476	51.8	48.2
15-64 years	24464	50.2	49.8
> 65 years	1387	48.4	51.6
Citizen households	7652		

Area and population density

Area (km ²)	2535
Occupied area (km ²)	1067
Population per km ²	17.1
Population per km ² of occupied area	40.6

Electoral statistics

Eligible voters (2000 Census)	22856
Number of votes cast (2002)	19920
Number of votes cast (2007)	20549



About Tewai Siassi

Tewai-Siassi District is a long, narrow strip of land along the north coast of the Huon Peninsula. It also includes the islands of Sakar, Umboi, Tolokiwa, Malai and Tuam.

The district member is Mr. Vincent Michaels, who ran for the 2007 elections as an independent candidate and is now a member of the New Generation Party. The member between 2002 and 2007 was Mr. Mao Zeming.

Low incomes are the norm across the district from the sale of food, fish, betel nut and coconut. There are some incomes and royalties from forestry on Umboi Island.

Education

Type and number of schools

Elementary	64
Community	14
Primary	26
Provincial high school	3
Vocational	0

Universal basic education indicators

Net admission rate	7.9%
Gross enrolment rate	77.8%
Net enrolment rate	56.6%

Literacy rate

Total	Male (%)	Female (%)
68.0	74.0	62.0

Health

Number and population per officer

Medical officers	0	n/a
Nursing officers	15	2888

Number and population per facility

Health centres	5	8665
Aid posts	32	1354

Infrastructure

Road access

A road at the end of the peninsula links Sialum with Finschhafen. However, water transport is more common. Seas are dangerous in the wet season. There is some passenger shipping between Finschhafen and the islands.

Economic Activity

Top agricultural activities of citizen households

	% engaged	%* engaged for cash
Food crops	83.5	14.0
Betel nut	73.1	27.4
Coconut	64.7	31.2
Livestock	54.9	15.4
Coffee	43.8	42.8

*of total citizen households