

# IDAHO VOTERS' GUIDE

## Registration and Voting

[www.idahovotes.gov](http://www.idahovotes.gov)



Participation in the electoral process gives each of us an important voice in charting the direction of our government. Voting is a precondition for good government and therefore a major responsibility of good citizenship.

As Chief Election Officer of Idaho, I urge every qualified elector to study the issues and the candidates. For complete information visit [idahovotes.gov](http://idahovotes.gov) or contact your County Clerk.

I sincerely hope the information contained here will help Idaho citizens to register and VOTE.

*Ben Yursa*  
Ben Yursa  
Secretary of State

PO Box 83720, Boise ID 83720-0080  
Telephone: (208) 334-2852 Fax: (208) 334-2282  
Located at 700 W Jefferson Street, Suite E-205

## **VOTER QUALIFICATIONS**

- A Citizen of the United States
- 18 years of age, or older
- A resident in the state and in the county for thirty (30) days prior to Election Day
- Registered as required by law

## **REGISTRATION**

Register with your County Clerk or official registrar up until 25 days preceding any election. Voters are required to provide their Idaho driver's license number or Idaho ID number when registering, or if they do not have a driver's license or ID card, provide the last four digits of their Social Security Number.

Any eligible voter may register by mail for any election if postmarked not later than 25 days prior to an election.

Any eligible voter may register on election day at the polling place for the precinct in which they reside by completing a registration and:

- Showing an Idaho driver's license or identification card
- Showing any document with a valid address in the precinct with a photo ID, or
- Showing a current valid student photo ID and a fee statement with an address in the precinct

## **PARTY REGISTRATION FOR PRIMARY**

The purpose of primary elections in the State of Idaho is to allow members of a recognized political party to select that party's nominees to go on the general election ballot. Primary elections often are referred to as "party primaries".

As a result of a federal court decision in Idaho Republican Party v. Ysursa, the 2011 Idaho Legislature passed House Bill 351 implementing a closed primary system. Persons who are not members of a party may not participate in the selection of that party's nominees. However, Idaho law does allow the political parties the option of opening their primary elections to "unaffiliated" voters and members of other political parties if they

so choose. The party chairman must notify the Secretary of State 6 months prior to the primary if the party intends to open its Primary Election to those outside the party.

So in primary elections, unless the party chooses to allow others outside the party to participate in its primary election, only registered voters of a political party may vote to select their party's nominees. In other words, at primary elections, registered Republicans may vote only for Republican candidates, and registered Democrats may vote only for Democratic candidates. Persons who are registered as "unaffiliated" (meaning not affiliated with any political party) may not vote for partisan candidates in primary elections unless the party decides to allow them. Independent candidates appear on the ballot only at the general election.

Since Idaho has never required party registration prior to July 1, 2011, there are approximately 742,000 registered voters who are not affiliated with any political party. Electors can designate their party affiliation with the Democratic, Republican, Constitution or Libertarian Party or select no party affiliation (Unaffiliated) in any of the following ways:

- Fill out a new voter registration card
- Fill out a Party Affiliation Declaration form
- Declare a party at the polls at the 2012 Primary Election
- Anyone who has not declared a party affiliation by the 2012 Primary Election will be registered as an unaffiliated voter

There are elections on nonpartisan issues scheduled to be held in conjunction with primaries, such as judicial elections, bond or levy election or possibly state or local question elections. All registered voters are entitled to vote on nonpartisan issues during primaries.

Party registration requirements have no affect on general election procedures. At general elections, all voters receive exactly the same ballot and may vote for any candidate whose name appears on it, without regard to the political affiliation of the candidate or the voter.

## **VOTING ID REQUIREMENT**

Voters are required to show a valid photo ID when voting at the polls or at the absentee polling place. Valid ID includes:

- An Idaho driver's license or ID card issued by the Idaho Transportation Department
- A passport or ID card, including a photo, issued by an agency of the US government
- Tribal ID, including a photo
- Student ID, including a photo, from a high school or an accredited institution of higher learning within Idaho

## **RE-REGISTRATION**

Re-registration is required if registration is canceled for the following reasons:

- An elector changes his residence to another residence
- An elector has a name change
- The voter failed to vote at least once at any primary or general election during the four years following registration

## **WHERE TO VOTE**

Election notices are published in local newspapers listing the polling place for each election precinct along with the address, the date of the election, and the hours during which the polls will be open. A ballot marking device is available at the polls. Every effort has been made to provide voters with disabilities with polling place accessibility, or when requested, absentee ballots.

## **ABSENTEE VOTING**

A registered voter may apply in writing to the County Clerk, giving their name, residence address in Idaho, and mailing address to which the ballot is to be forwarded. The mail-in application must be signed personally by the applicant and be received by the County Clerk no later than the sixth day before the election.

The County Clerk must receive the absentee ballot not later than 8 p.m. the day of the election in order to be counted.

In person voting at the absentee elector's polling place ends at 5:00 p.m. on the Friday before each election.

# OPTICAL SCAN BALLOT VOTING INSTRUCTIONS

Use only the marking device provided to mark your ballot.

To vote you must fill-in the oval completely.

- John Johnson
- Mary Marks
- Bill Brown

To vote you must complete the arrow.

- John Johnson ←
- Mary Marks ←
- Bill Brown ←

To write in a name, you must fill-in the oval or complete the arrow and write in the name of a valid write-in candidate on the line provided.

Carey Carpenter (write-in)

Carey Carpenter (write-in) ←

You cannot vote for a candidate whose name appears on the ballot and write in a candidate under the same office title. This is an overvote and neither vote will count.

Place the ballot in the secrecy sleeve.



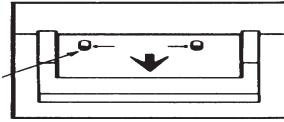
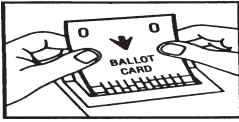
Return the ballot, in the secrecy sleeve, to the Ballot Receiving Clerk.

Do not attempt to erase or cross out a vote.

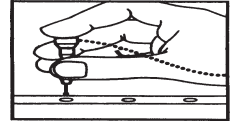
If you make a mistake in marking your ballot, another ballot can be issued by returning the spoiled one to the Election Clerk.

# PUNCHCARD BALLOT VOTING INSTRUCTIONS

Using both hands, insert the ballot card all the way into the voting unit. Be sure the two slots in the top stub of your ballot card fit down over the two red pins.



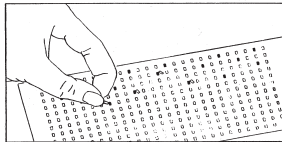
Using the Official Ballot pages, find the voting number for your choice and punch that same number in the voting unit. Hold the punch device straight up and down when punching. Do not use a pen or pencil on voting unit.



To write in a name, you must write in the name of a valid write-in candidate and the office on the gray ballot envelope.

You cannot vote for a candidate whose name appears on the ballot and write in a candidate under the same office title. This is an overvote and neither vote will count.

After voting, withdraw the ballot card. Inspect it to be sure all holes are cleanly and completely punched out. Remove any loose chads as illustrated.



Insert ballot card into gray ballot envelope and return to the Receiving Clerk.



If you make a mistake in marking your ballot, another ballot can be issued by returning the spoiled one to the Election Clerk.

# PAPER BALLOT VOTING INSTRUCTIONS

Use only the marking device provided to mark your ballot.

To vote you must make an X in the box.

<input type="checkbox"/>	John Johnson
<input checked="" type="checkbox"/>	Mary Marks
<input type="checkbox"/>	Bill Brown

To write in a name, you must make an X in the box and write in the name of a valid write-in candidate on the line provided.

<input checked="" type="checkbox"/>	<u>Carey Carpenter</u>	(write-in)
-------------------------------------	------------------------	------------

You cannot vote for a candidate whose name appears on the ballot and write in a candidate under the same office title. This is an overvote and neither vote will count.

Fold the voted ballot(s) so that the official stamp is visible and the face of the ballot is completely enclosed.

OFFICIAL ELECTION BALLOT
month/day/year

Return the voted ballot(s) to the Ballot Receiving Clerk.

If you make a mistake in marking your ballot, another ballot can be issued by returning the spoiled one to the Election Clerk.

## VOTER INFORMATION

For further information in regard to election procedures, contact your County Clerk, the Secretary of State's office, or visit [www.idahovotes.gov](http://www.idahovotes.gov)

<b>County</b>	<b>Phone</b>	<b>County Seat</b>	<b>Ballot Type</b>
Ada	287-6860	Boise	Oval Optical Scan
Adams	253-4561	Council	Paper
Bannock	236-7334	Pocatello	Oval Optical Scan
Bear Lake	945-2212	Paris	Paper
Benewah	245-3212	St Maries	Paper
Bingham	782-3164	Blackfoot	Oval Optical Scan
Blaine	788-5510	Hailey	Oval Optical Scan
Boise	392-4431	Idaho City	Paper
Bonner	255-3631	Sandpoint	Oval Optical Scan
Bonneville	529-1363	Idaho Falls	Punchcard
Boundary	267-2242	Bonnors Ferry	Paper
Butte	527-3021	Arco	Paper
Camas	764-2242	Fairfield	Paper
Canyon	454-7563	Caldwell	Oval Optical Scan
Caribou	547-4324	Soda Springs	Paper
Cassia	878-5240	Burley	Oval Optical Scan
Clark	374-5304	Dubois	Paper
Clearwater	476-5615	Orofino	Punchcard
Custer	879-2360	Challis	Paper
Elmore	587-2131	Mountain Home	Oval Optical Scan
Franklin	852-1090	Preston	Punchcard
Fremont	624-7332	St Anthony	Oval Optical Scan
Gem	365-4561	Emmett	Oval Optical Scan
Gooding	934-4841	Gooding	Oval Optical Scan
Idaho	983-2751	Grangeville	Paper
Jefferson	745-7756	Rigby	Oval Optical Scan
Jerome	644-2714	Jerome	Arrow Optical Scan
Kootenai	446-1030	Coeur d'Alene	Oval Optical Scan
Latah	883-2249	Moscow	Oval Optical Scan
Lemhi	756-2815	Salmon	Oval Optical Scan
Lewis	937-2661	Nezperce	Paper
Lincoln	886-7641	Shoshone	Paper
Madison	359-6219	Rexburg	Oval Optical Scan
Minidoka	436-9511	Rupert	Punchcard
Nez Perce	799-3020	Lewiston	Oval Optical Scan
Oneida	766-4116	Malad	Arrow Optical Scan
Owyhee	495-2421	Murphy	Paper
Payette	642-6000	Payette	Oval Optical Scan
Power	226-7611	American Falls	Arrow Optical Scan
Shoshone	752-1264	Wallace	Punchcard
Teton	354-8780	Driggs	Oval Optical Scan
Twin Falls	736-4004	Twin Falls	Oval Optical Scan
Valley	382-7100	Cascade	Oval Optical Scan
Washington	414-2092	Weiser	Paper