

STATUS REPORT ON HARBOR TRANSITWAY AND ARTESIA TRANSIT CENTER IMPROVEMENTS

South Bay Service Council, April 8, 2011



Express Lanes: Harbor Transitway/ATC Improvements

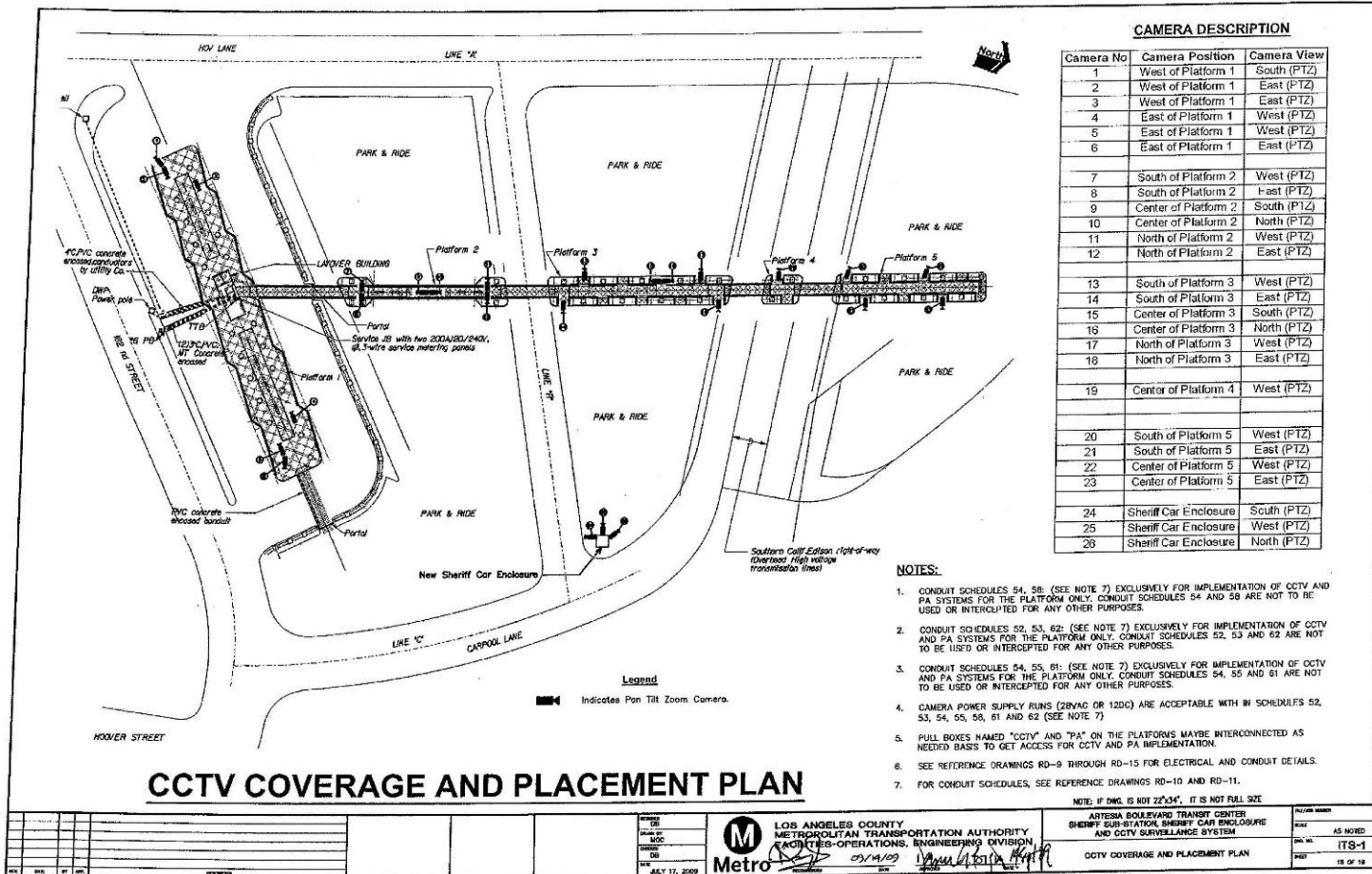
➤ Scope of Work (CRD Funded):

- a) Artesia Transit Center Sheriffs Substation, Lighting and CCTV (Complete)
- b) Lighting Upgrades at Stations/Parking Lots (Complete)
- c) Sound Enclosure Pilot Test at 37th Street Station (July 2011)
- d) New Bus Stops at Slauson and Manchester (July 2011)
- e) CCTV and Digital Message Signs at Stations/Parking Lots (February 2012)
- f) HTW Signage/Wayfinding Improvements (design in process, forecast June 2012)
- g) Art Project at Artesia Transit Center by Allison Saar (June 2012)

Artesia Transit Center: Substation and CCTV



Artesia Transit Center: CCTV Plan



Harbor Transitway: Lighting Improvements



37th St. Station: Before



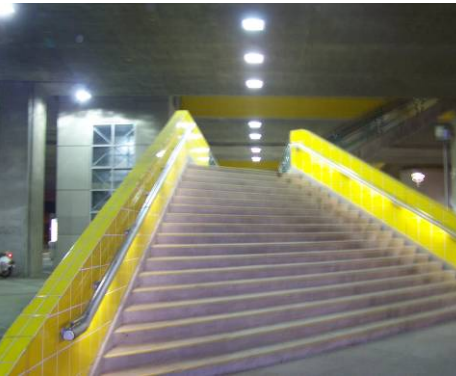
Manchester Station: Before



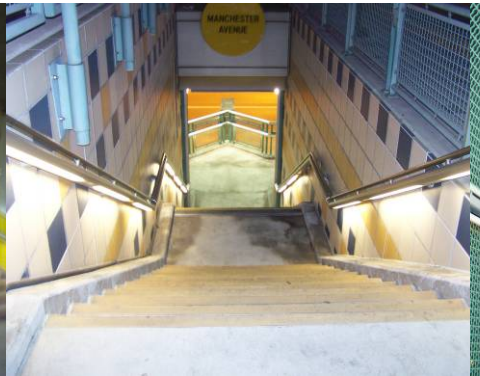
Slauson Station: Before



Park & Ride: Before



37th St. Station: After



Manchester Station: After



Slauson Station: After



Park & Ride: After

37th Street Station Sound Enclosure (Pilot Test)



37th Street Station Sound Enclosure (Pilot Test)

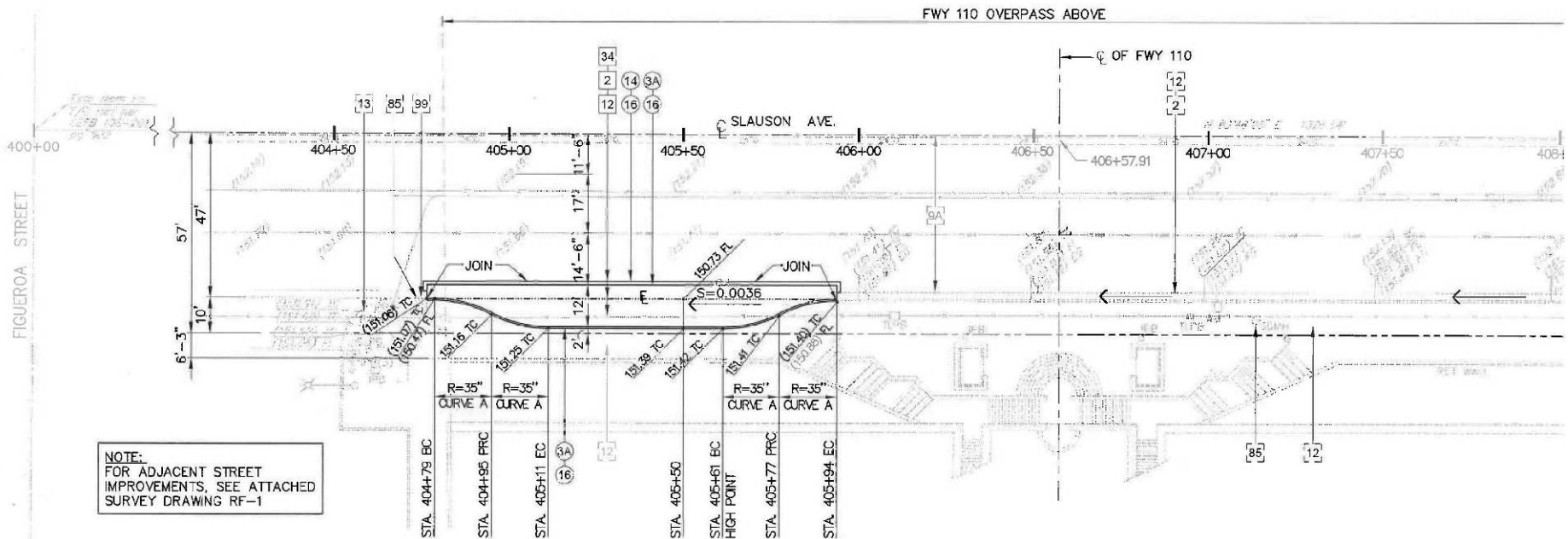


VIEW FROM PASSENGER SIDE OF BUS STATION WITH NOISE BARRIER



Metro

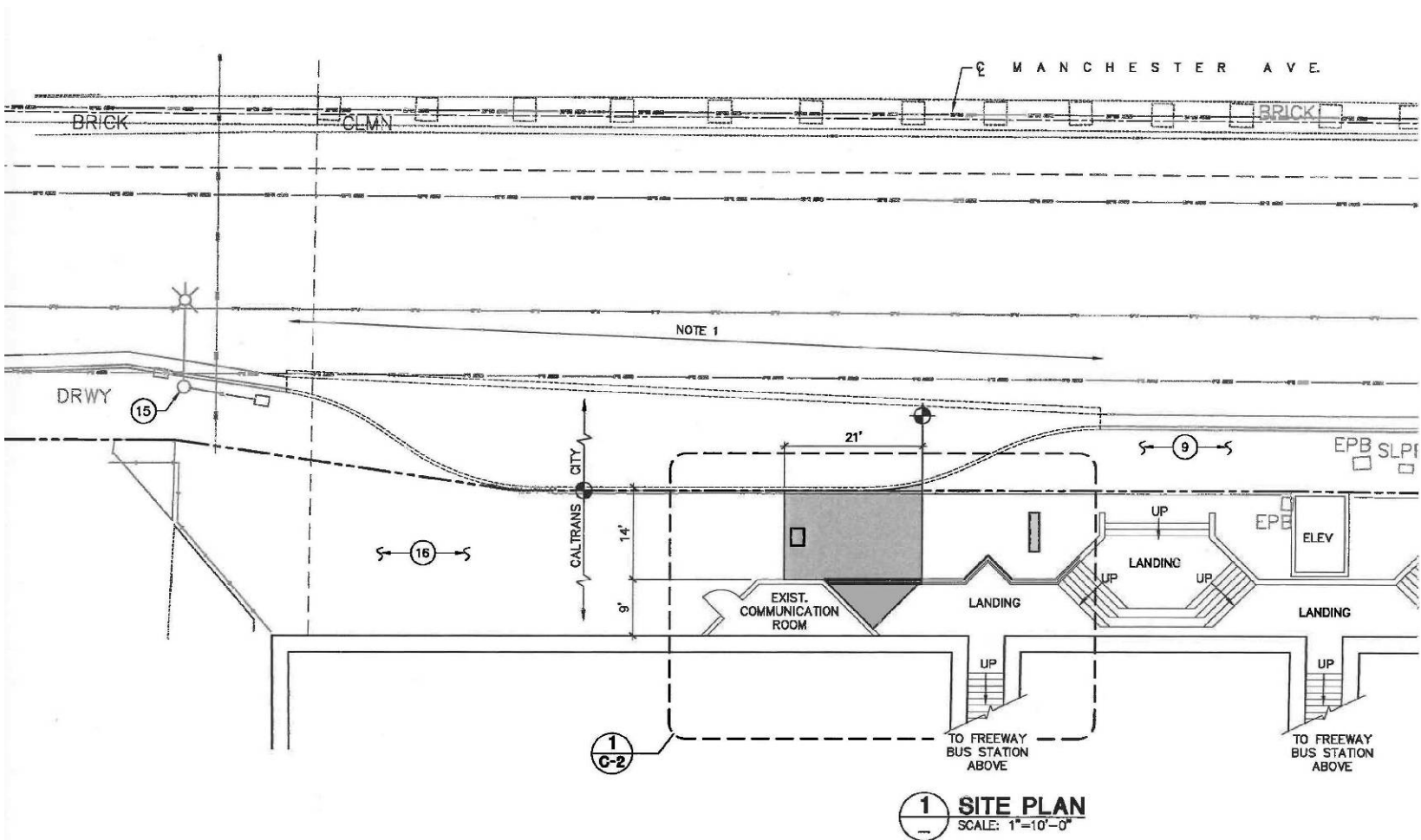
Slauson Station Bus Cutout (Design)



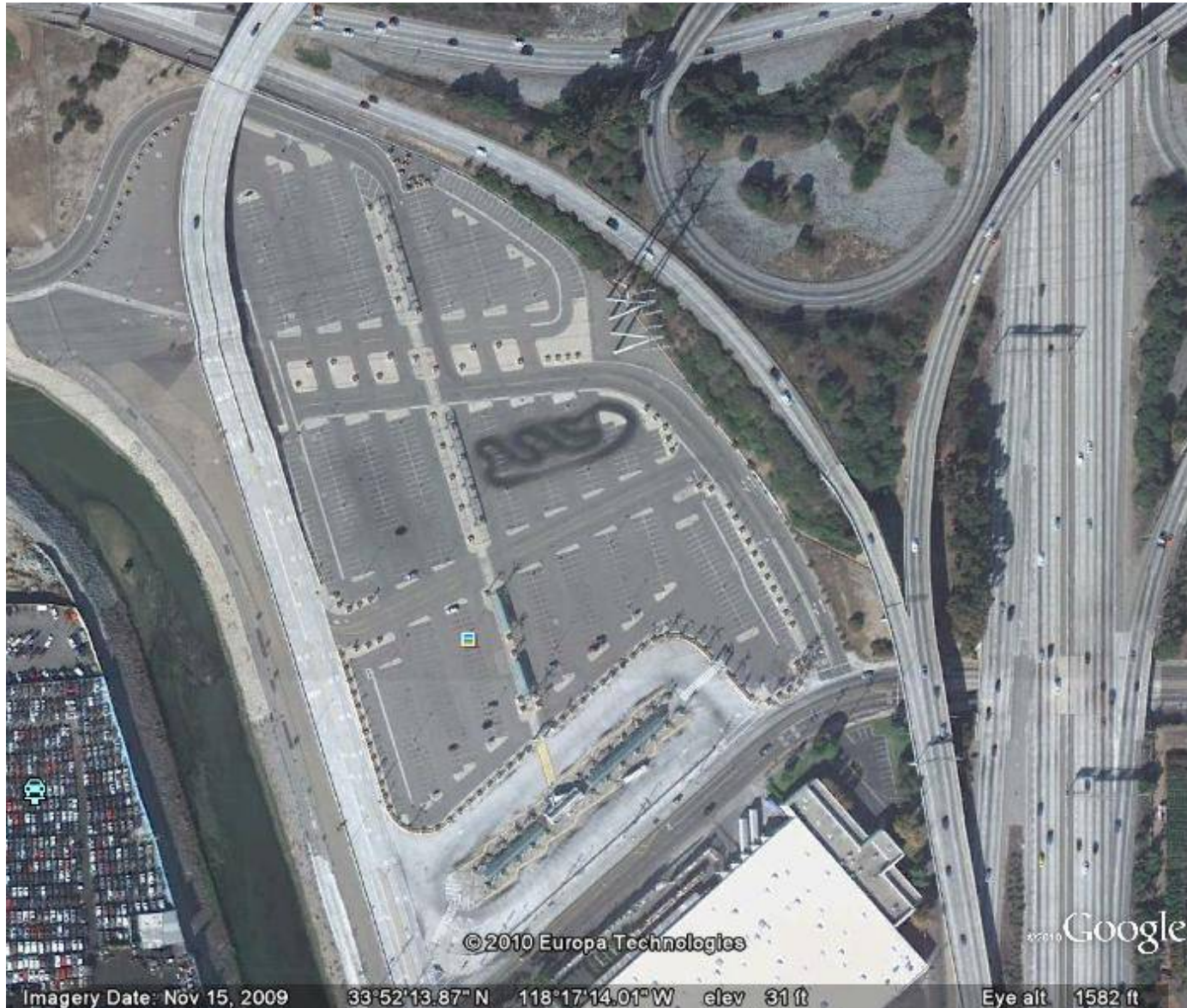
STREET PLAN & PROFILE AT SLAUSON TRANSIT STATION

SCALE: 1"=20'-0"

Manchester Station Bus Cutout (Design)

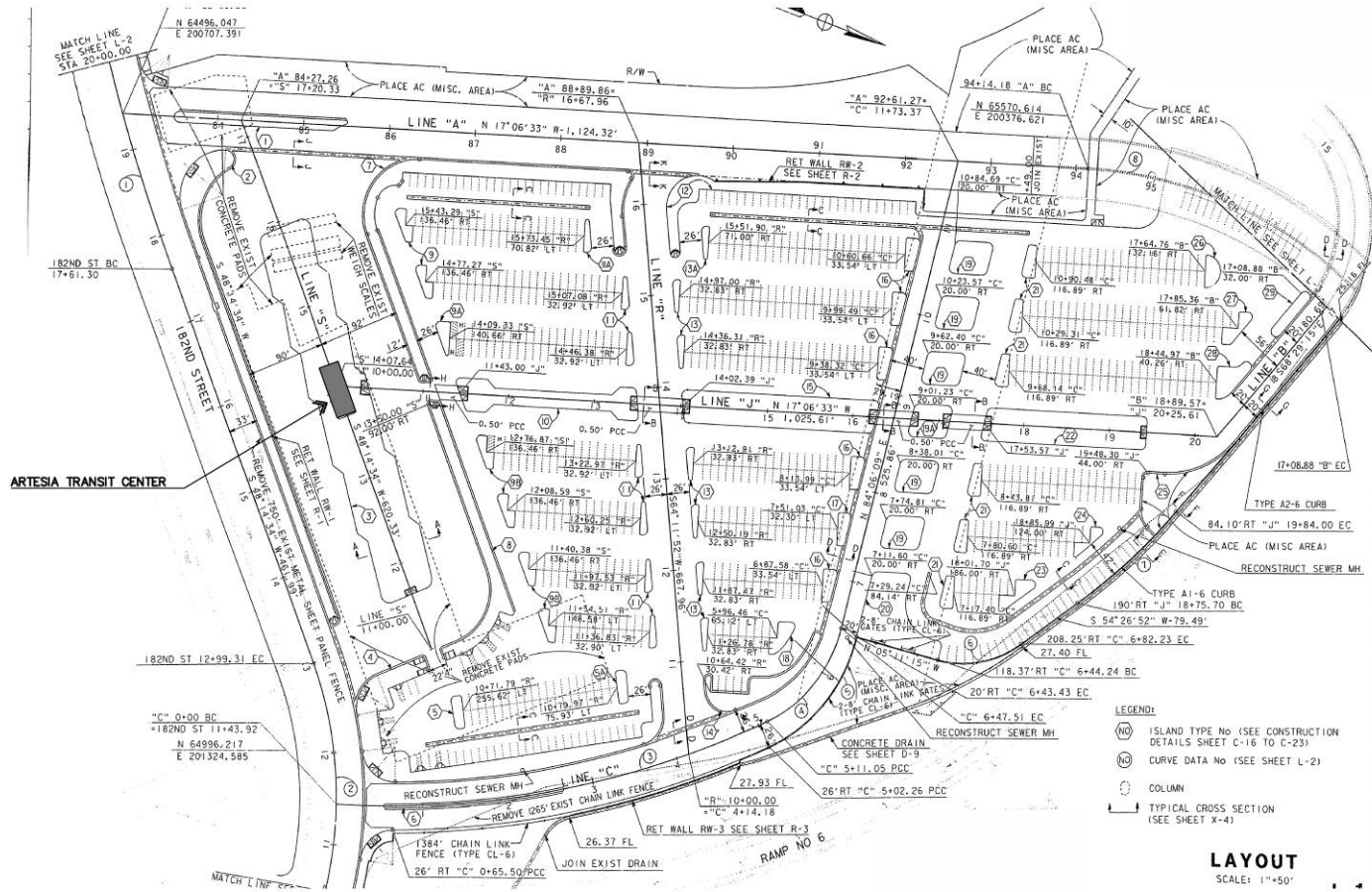


Aerial of Artesia Transit Center



- Terminus of HTW
- 2800 boardings/day
- 10 acre site
- 900 parking spaces
- Owned by Caltrans
- Opened in 1996
- Served by Metro, Gardena, Torrance Transit

Site Plan of Artesia Transit Center



- LEGEND:**
- (NO) ISLAND TYPE NO (SEE CONSTRUCTION DETAILS SHEET C-16 TO C-23)
 - (C) CURVE DATA NO (SEE SHEET L-2)
 - (C) COLUMN
 - (C) TYPICAL CROSS SECTION (SEE SHEET X-4)

LAYOUT
SCALE: 1"=50'

A SITE PLAN
NOT TO SCALE

DATE: 11/15/11
 TIME: 10:00 AM
 DRAWN BY: [unreadable]
 CHECKED BY: [unreadable]

Views of Artesia Transit Center



Artesia Transit Center Working Group

➤ Artesia Transit Center Working Group

- Formed to provide oversight and collaboration on improvements and future developments at Artesia Transit Center
- Includes members from Metro, SBCOG, Governance Council, Security/Sheriffs and regional operators
- Two working sessions have been held in October 2010 and February 2011
- At this time focused primarily on the short term improvements as well as long-term future development and land acquisition.
- Scheduled to meet again in May 2011

Artesia Transit Center: Additional Scope of Work

- Additional Non-CRDP Scope for Artesia Transit Center (November 2010 Board):
 - a) Digital Message Signs at all bus bays and clock replacement
 - b) New Public Automated Public Toilets (APTs)
 - c) Landscaping and Irrigation Improvements
 - d) Enhanced Wayfinding and Environmental Signage for Artesia Transit Center

ATC: Proposed VMS System



Scope:

Install a complete variable message system to announce bus stop and schedule information

Status:

- Design of hardware and installation is complete
- Goal is to advertise the contract May 2011
- Complete by December 2011

ATC: Public Restrooms



Scope:

Install a two-unit automated self-cleaning public toilet at ATC (TAP-integrated)

Status:

- RFP preparation in process
- Includes 10-year maintenance agreement
- Goal is to advertise July 2011
- Open by May 2012

ATC: Landscaping Improvements



Before



After

Scope:

Complete landscaping renovation to remove dead palm trees, install new landscaping, and new irrigation system

Status:

- RFP for landscape architect in process.
- Start design work in July 2011, complete in September 2011
- Start installation: January 2012
- Complete April 2012

ATC: Signage and Wayfinding Improvements



Scope:

Complete improvement of all signage and wayfinding at ATC

Status:

- RFP for signage designer in process, award June 2011.
- Start design work in July 2011, complete in October 2011
- Start installation: March 2012
- Complete June 2012

Artesia Transit Center Art Project: Allison Saar (Concept)






Long Term Potential: Solar Generation



Example:

Artesia Transit Center Park N Ride Lot

- 📍 1.732 MW Solar PV capacity generating
- 📍 2,410,890 kWh annually

Artesia Transit Center Park N Ride Lot 731 W 182nd St., Los Angeles, CA 90248

Station Identification		Results			
Cell ID:	0174361	Month	Solar Radiation (kWh/m ² /day)	AC Energy (kWh)	Energy Value (\$)
State:	California	1	3.15	124358	14303.66
Latitude:	33.9° N	2	3.91	142480	16388.05
Longitude:	118.3° W	3	5.00	202219	23374.25
PV System Specifications		4	5.97	232581	26751.47
DC Rating:	1732.0 kW	5	6.89	277832	31956.24
DC to AC Derate Factor:	0.803	6	7.10	272353	31326.04
AC Rating:	1390.6 kW	7	6.95	272961	31399.28
Array Type:	Fixed Tilt	8	6.56	256032	29448.80
Array Tilt:	5.0°	9	5.62	211744	24354.80
Array Azimuth:	230.0°	10	4.32	170370	19595.96
Energy Specifications		11	3.52	133797	15349.33
Cost of Electricity:	11.5¢/kWh	12	2.89	113144	13013.82
		Year	5.16	2410890	277300.56

QUESTIONS?

