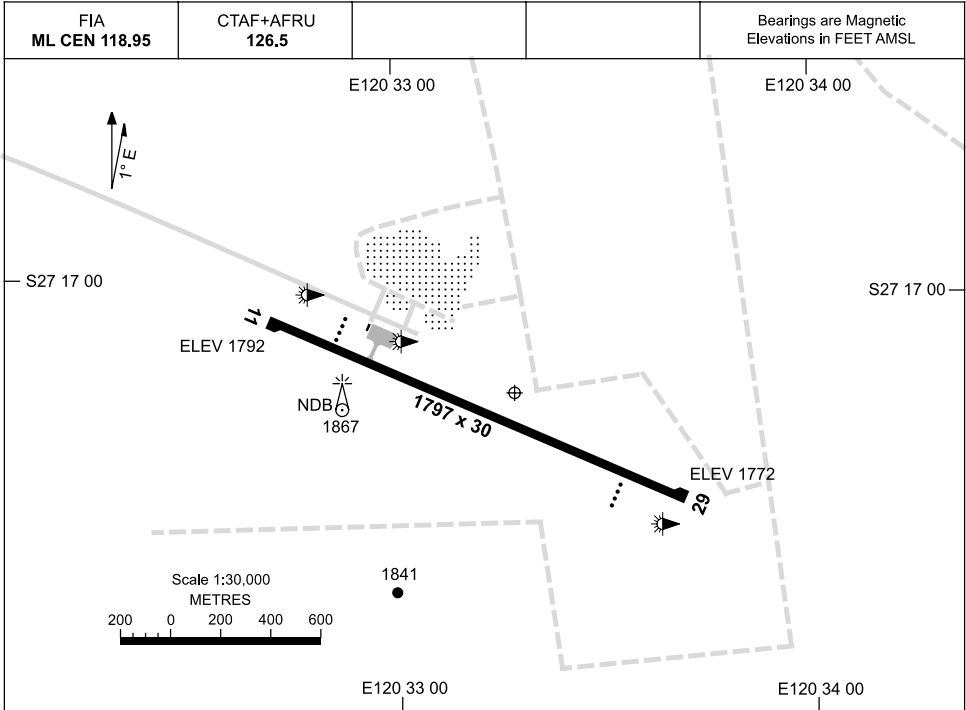


18 NOV 2010

AD ELEV 1792
S27 17 11 E120 33 17

AERODROME CHART
MOUNT KEITH, WA (YMNE)



	AERODROME LIGHTING
RWY	TAXIWAY : SIDELINE BLUE RL : MAN
11 <small>113</small>	PAPI LEFT SIDE 3.0° 42FT LIRL
<small>293</small> 29	PAPI LEFT SIDE 3.0° 42FT LIRL

NOTES

1. RIGHT HAND CIRCUITS REQUIRED WHEN OPR RWY 11.
2. DANGER AREA DUE BLASTING AT MINE SITE. SFC - 2000FT 6300 M BEARING 348° MAGNETIC FROM AD.
3. AFRU NOT AVBL ON GROUND.

Changes: NOTE 3.

MNEAD01-125