



BASILDON SPORTING VILLAGE

Official 2012 Pre Games Training Camp

CONTENTS

	PAGE
BASILDON AND ITS SPORTING VILLAGE	4
OLYMPIC SPORTS	5
PARALYMPIC SPORTS	5
WHY BASILDON FOR YOUR TRAINING CAMP?	6
WHAT THE BASILDON SPORTING VILLAGE CAN OFFER:	8
GENERAL STRENGTH & CONDITIONING	10
MEDICAL FACILITIES	10
SECURITY (PUBLIC ACCESS)	10
EXCLUSIVITY	12
DESKWORK AND MEETING SPACE	12
MEDIA MANAGEMENT	12
REST AND RELAXATION (R&R)	12
LOCAL ACCOMMODATION	14
TRANSLATION AND GOVERNMENT RELATIONS	14
TRANSPORT	14
LOGISTICS/FREIGHT SERVICES	17
LOCAL HOSTS	17
SPECIAL ARRANGEMENTS FOR VIP AND VVIP VISITORS AND THE NOC / NPC DELEGATES	17
PARALYMPIC ATHLETES	17

BASILDON AND ITS SPORTING VILLAGE



Basildon sits at the heart of the Thames Gateway, Europe’s largest regeneration scheme. By 2012 Basildon will be benefiting from major regeneration. The provision of excellent sports facilities are central to its vision for the future. Over £1 billion is being invested in Basildon town centre alone, just half a mile from the Sporting Village site.



“By 2010 we will have created a world class performance and training venue in the perfect location for your London 2012 Training Camp”

BALA MAHENDRAN – CHIEF EXECUTIVE OF BASILDON DISTRICT COUNCIL

Basildon Quick Facts:

- 30 minutes from Stratford Olympic Park
- 7 minutes from the M25
- 40 minutes from London Stansted airport and London City Airport
- 31st most competitive business location in UK and the second biggest economy in the Thames Gateway outside of Canary Wharf
- 13 million sq ft of offices
- 5 town centres; 2 million sq ft of shops
- Over 60% of the District is green and open space

Basildon Sporting Village, located in 250 acres of parkland provides the perfect environment for a Pre Games Training Camp (PGTC). Only 30 minutes from the Olympic Park, but far enough away to enjoy the peace and tranquility of the Basildon District and surrounding areas.

The facility has been approved as a Pre Games training camp for the following Olympic and Paralympic events:

OLYMPIC SPORTS:

Athletics, Boxing, Fencing, Rhythmic Gymnastics, Artistic Gymnastics, Judo, Swimming*

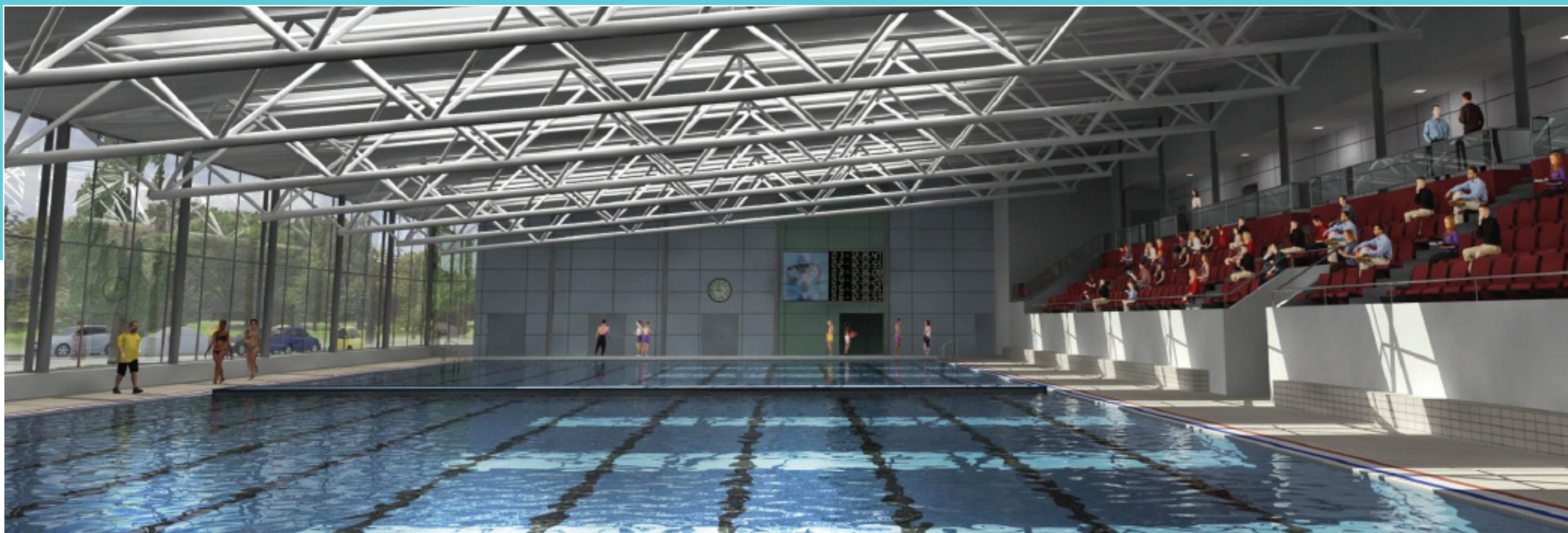
PARALYMPIC SPORTS:

Paralympic Athletics, Boccia, Goalball, Paralympic Judo and Wheelchair Fencing, Swimming*

In addition, the Sporting Village will have the only 50 metre international sized pool in the region.

* Awaiting accreditation

WHY BASILDON FOR YOUR TRAINING CAMP?



- Basildon Sporting Village will offer state of the art sports training facilities in a compact and secure location – in the middle of a 250 acre Park, less than 25 miles from the Olympic Park
- If you commit to Basildon soon enough, you will be invited to work with us on the final details of the design for the Sporting Village so that we can be sure to meet all of your requirements (whenever practical and feasible)
- We understand the needs of elite athletes and coaches through our relationships with local Olympians and Paralympians
- We are committed to ensuring that our Pre Olympic Training Camp exceeds even the most demanding requirements
- We will have the only 50 metre international sized pool in the region
- We are perfectly located
- We can provide quick and easy access to specialist medical facilities – including access to MRI scanning and X ray equipment
- We offer multi sport capacity, in partnership with our neighbours in Southend
- Basildon and South Essex is “London’s playground” – offering open countryside and places to rest and relax, as well as places to unwind and be entertained



WHAT THE BASILDON SPORTING VILLAGE CAN OFFER:

- Not suitable to competition standard, but suitable for practise
- Facilities or temporary facilities available to competition standard, but not accredited
- Accredited for pre-games preparation

OLYMPIC (O) PARALYMPIC (P)	OLYMPIC SPORT / DISCIPLINE	FACILITIES REQUIRED	LOCATION WHERE FACILITIES ARE/CAN BE PROVIDED	ACCREDITED BY LONDON 2012 (Y/N)	COMMENTS
O/P	Archery	Flat wind protected outdoor grass area 150m, width dependant on number of targets. Wheelchair access required.	Gloucester Park	No	May require temporary wind breaks. May require temporary paths if accessing grassed areas. This can be arranged.
O/P	Athletics	400m synthetic track and infield. Separate area for throwing provision with anchoring facility for disabled throwers. 7m height for pole vault run up and take off.	Basildon Sporting Village and athletics track	Yes	Track accredited to IAAF standard.
O	Badminton	Court area: 13.40m x 6.10m x 9.1m clear height. Safety zones: 2.3m from baseline to all, 2.2m from all to sideline, 2m between parallel courts. 6 courts with sprung wooden floor.	Basildon Sporting Village	No	May require temporary re-marking which can be arranged.
O/P	Basketball	Space: 32.1m length x 22.1m width x 7m clear height with wooden floor. Space along one length for off court players and officials.	Basildon Sporting Village	No	Not accredited but Main Sports Hall has 9.1m clear height.
P	Boccia	Court Dimensions: 12.5 x 6m. Quiet (not silent) location preferred. Flooring Taraflex is the preferred competition/playing surface. Flat and smooth such as a tiled or wood gymnasium floor also acceptable. Environment and lighting. Hall should be air-conditioned if possible. Lighting: standard sports centre lighting is usually fine, but avoid glare off the courts.	Basildon Sporting Village	Yes	Can be accommodated within Main Sports Hall or Studios.
O	Boxing	Platform: Height 1.22m Dimensions 7.1m x 7.1m. Floor: sprung, covered with an International Federation (AIBA) approved felt or rubber and stretch canvas. Overall space required including 2m all-round safety margins for one ring is 11.1m x 11.1m. Ring: Dimensions 6.1m x 6.1m internal extending 0.5m outside of the ring ropes. Construction – 3 or 4 ropes, minimum 3cm to maximum 5cm thick, tightly drawn from padded corner posts at 40cm, 80cm and 130cm high (in case of 4 ropes; 40.6cm, 71.1cm, 101.6cm and 132.1cm high). Ropes must be covered in soft or smooth material. Floor level training areas: flooring as above, construction as for ring above, with anchors for corner posts.	Chalvedon Boxing Club/Eversley Leisure Centre	Yes	Will require provision of ring(s) if Boxing Club not suitable.
O/P	Fencing	Sports hall that can accommodate 5-6 pistes and conditions. 3.6m clear height – wooden sprung floor with non-slip surface.	Basildon Sporting Village	Yes	Within Main Sports Hall or Studios but would need to allow for making good of floor after marking pistes.
O/P	Football	For Paralympic variants - Sand filled Artificial Turf Pitch (full size).	Gloucester Park	No	7 full sized grass pitches available with 1 enclosed pitch within athletics stadium and grandstand. 6 x 3rd generation 5-a-side artificial pitches also available.

OLYMPIC (O) PARALYMPIC (P)	OLYMPIC SPORT / DISCIPLINE	FACILITIES REQUIRED	LOCATION WHERE FACILITIES ARE/CAN BE PROVIDED	ACCREDITED BY LONDON 2012 (Y/N)	COMMENTS
O	Gymnastics (artistic)	Space: Minimum 900 square metres gymnastics space. 8m clear height.	Basildon Sporting Village	Yes	Facilities available in specialist Gymnastics Centre.
O	Gymnastics (rhythmic)	Hall area: 576 square metres and 9m clear height. Dance studio: 15m x 10m x 5m clear height.	Basildon Sporting Village	Yes	Facilities available in specialist Gymnastics Centre.
O	Gymnastics (Trampoline)	Hall area: 400 square metres.	Basildon Sporting Village	No	Specialist Gymnastic Centre but insufficient height for full competition. Suitable for practise.
P	Handball	Hall space: 44m x 22m x 7m clear height.	Basildon Sporting Village	No	Possible within Main Sports Hall.
O/P	Judo	Overall matted area: 16m x 16m with space for 2 matted areas (approximate space required 20m x 30m) with sprung wooden floor.	Basildon Sporting Village	Yes	Possible within Main Sports Hall.
O/P	Swimming	Pool: 8 lane, 50m pool, average depth of 1.8m.	Basildon Sporting Village	Yes	International size pool with moveable boom suitable for ASA national/international training.
O	Synchronised swimming	Pool: 8 lane, 50m pool, average depth of 2m.	Basildon Sporting Village	No	Insufficient depth for full Olympic competition but suitable for practise.
O	Taekwondo	Matted area: 12m x 12m. Separate area: 10m x 5m for kicking bags.	Basildon Sporting Village	No	Possible within Main Sports Hall and/or Studios.
O	Table tennis	Indoor hall space: to accommodate playing areas measuring 16m x 9m x 5m.	Basildon Sporting Village	No	Main Sports Hall has sprung floor but would require temporary ITTF approved vinyl sports covering.
O	Tennis	No details	Facilities available by arrangement with David Lloyd Centre	No	Indoor and outdoor courts.
O	Triathlon	Running Road and trail running areas free from traffic. 400m track, surface suitable for distance training. Cycle Light-traffic roads, varying terrain. Swim Swimming pool, preferably 50m. Conditioning Gymnasium or weights facility.	Basildon Sporting Village/Fords Research Centre	No	Track, trail and swimming facilities available at Sporting Village. Ford Motor Company test track may be available for off-road cycling practice.
O	Water polo	Depth of 2m required.	Basildon Sporting Village	No	Depth only 1.8m so insufficient for Olympic competition, but suitable for practise.
O	Volleyball	Not correct height in sports hall.	Basildon Sporting Village	No	Insufficient height in sports hall for Olympic competition standard. Suitable for practise.
O	Volleyball (beach)	Temporary - up to two courts.	Gloucester Park	No	Temporary facilities would need to be provided.
O	Weightlifting	Hall space: can accommodate 2-5m x 16m squared platform.	Basildon Sporting Village	No	Platforms required and fitness gym has concrete floor.
O	Wrestling	Indoor gym area: can accommodate 12m x 12m with sprung or wooden flooring.	Basildon Sporting Village	No	Facilities available in specialist Gymnastics Centre.

WHAT THE BASILDON SPORTING VILLAGE CAN OFFER: *continued*

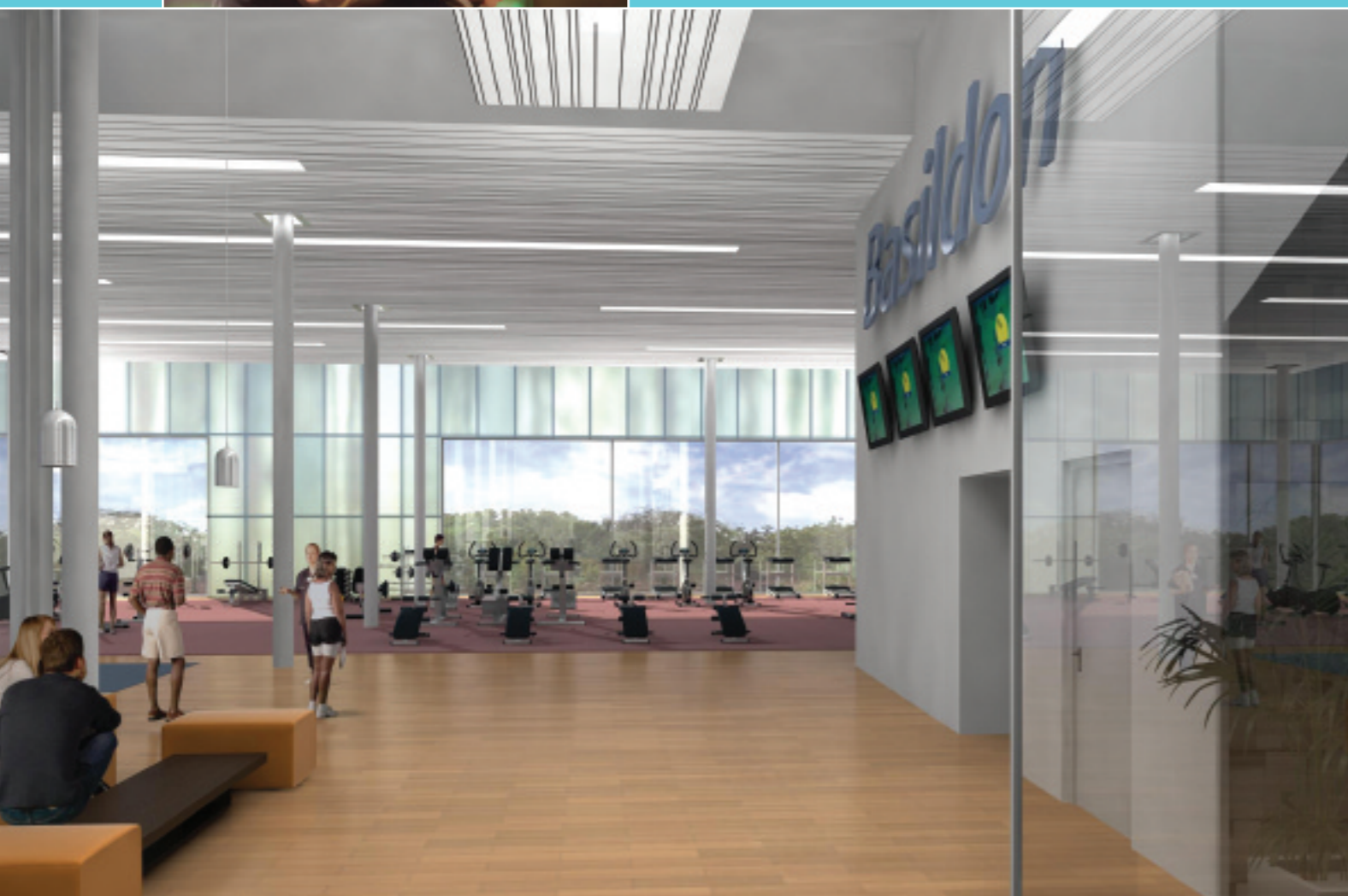


GENERAL STRENGTH & CONDITIONING

Fitness suite: All sports will have access to our fitness suite that includes: 100 cardio-vascular and resistance stations; lifting platforms – as well as free and fixed weights and stretching / warm-up zones

Free weights areas: Within the Fitness Suite we can provide up to 2 lifting platforms

Ice baths: We can provide ice baths, in various locations (portable). We will provide on-site ice generating capacity during the Pre Games Training Camp period



MEDICAL FACILITIES

Basildon University Hospital is situated less than 2 miles from Basildon Sporting Village. The hospital medical centre offers advanced MRI scanning facilities and medicines can be prescribed via our attending / on call doctor who will work closely with performance directors and coaches.

Consideration can also be given to the location of temporary mobile scanning facilities on site with video / internet connections to leading specialists.

Basildon University Hospital offers world class;

- Orthopaedic, Rheumatology, Neurology & Radiology Consultants
- MRI, CT, X-Ray & Ultrasound scanners
- Cardiothoracic care

SECURITY (PUBLIC ACCESS)

Depending on the size of the delegation attending the Pre Games Training Camp, we envisage the whole of the Basildon Sporting Village would be closed to the general public (access restricted to accredited personnel only) for the duration of the PGTC. The Basildon Sporting Village offers natural security, being set within Gloucester Park which is enclosed by fencing.

Access to Gloucester Park would need to be maintained for public access, but additional checks and controls would be introduced at the points of entry and by security staff patrolling the public areas. Access to the Sporting Village itself can be tightly controlled, and the whole facility will have state of the art CCTV monitoring equipment patrolling. Essex Police have been consulted on security arrangements, and have already produced plans for emergency responses and for introducing heightened security arrangements should these be required. We could, if required, introduce secure storage facilities in steel containers within the CCTV coverage.

WHAT THE BASILDON SPORTING VILLAGE CAN OFFER: *continued*

EXCLUSIVITY

We are very willing to consider approaches from National Organising Committees (NOC's) and National Paralympic Committees (NPC's) who would be interested in either exclusive use or shared use.

DESKWORK AND MEETING SPACE

The Sporting Village will provide an office and meeting space for team managers' and support staff. Meeting space can be provided for briefings and might also be used for medical examinations etc.

MEDIA MANAGEMENT

The attendance of Olympians in Basildon will attract media attention. We realise that some of this may not be welcome. We have access to media professionals who will advise us on the needs of the media, whilst protecting athletes from intrusion and breach of privacy. We will offer a media briefing area in the Basildon Sporting Village and/or at the Basildon Centre (Council civic offices). An interview room will be available, and we will introduce an email system to facilitate quick contact with PR / Media officers.

Physical access to the media can be effectively controlled at the main reception desk of the Basildon Sporting Village.

Gloucester Park itself offers an excellent backdrop for photo opportunities. Thurrock & Basildon College has a brand new purpose-built Centre for media facilities at its Nethermayne Campus, and at South East Essex College's new £52m campus in Southend state of the art media facilities, including TV and music production facilities, are offered, with the faculty recognised as a centre of vocational excellence.

REST AND RELAXATION (R&R)

Basildon and the whole of South Essex is rapidly become 'London's Playground', with space to rest, explore, and be entertained. By 2012, huge investments will have transformed our green spaces, sports facilities, hotel accommodation, local heritage sites and arts venues. In and around Basildon, there are 1800 archaeological sites and listed buildings, together with 24 Scheduled Ancient Monuments, sitting alongside and within extensive areas of green space, including country parks and woodlands, marshes and estuaries.

We will provide an area for informal relaxation within the Basildon Sporting Village. The area will allow athletes to meet informally, gain access to the Internet, and to relax. We will also be able to provide a selection of daily newspapers and publications from across the world. We will also provide telephones and volunteers with appropriate language skills will be able to offer general assistance, advice and support.

Our volunteer team will be happy to arrange local, regional and national excursions and can accompany our Olympic guests. Athletes and coaches can simply walk out of the door of the Sporting Village to relax in the natural environment of Gloucester Park. Within walking distance of the Gloucester Park, you will find many other "R&R" facilities, including;

- 12 screen cinemas
- Towngate Theatre
- Eastgate Shopping Centre with food court
- Numerous local restaurants
- Bars, restaurants and night clubs at Festival Leisure Park
- Two casino's in Southend
- Barleylands Farm
- Wat Tyler Country Park and RSPB centre
- Billericay old town

Within ten to twenty minutes drive-time Basildon and its surrounding areas you will find;

- Acres of open space and tranquil countryside
- Seven miles of golden beaches in Southend-on-Sea, including the longest pleasure pier in the world
- Hadleigh Castle and Country Park – site of the 2012 Olympic mountain biking



WHAT THE BASILDON SPORTING VILLAGE CAN OFFER: *continued*

LOCAL ACCOMMODATION

Basildon and the surrounding areas offer a wide range of local accommodation, from budget to high quality hotels and private houses available for short-term rental. Basildon Council and its partners are developing and implementing a range of strategies aimed at stimulating improvements to the local business, tourism and leisure infrastructure. This will create demand for a range of new and complementary mid to luxury conference facilities and hotels. By 2012 Basildon will have an even greater range of high quality bed spaces available. Currently we have approximately 400 hotel bed spaces in the Basildon District, with a further 1000 within 25 minutes.

To augment hotel provision, we can provide high quality temporary accommodation. Due to massive expansion in local housing by 2012 it may well be possible to offer newly built public sector accommodation to athletes on a short term let basis. We understand that there are tentative plans to locate cruise liners with huge numbers of bed spaces at Tilbury and the new London Gateway Port – offering flexible accommodation within 20 miles of the London 2012 Olympic Village, and just 10 minutes from the Basildon Sporting Village

TRANSLATION AND GOVERNMENT RELATIONS

As a centre for international trade and commerce, Basildon offers a wide range of translation service providers.

We will also support our guest athletes and officials to overcome any issues with Government departments (Police and Security Services, Immigration Control, Olympic Accreditation, HM Customs etc). Basildon Council employs over 1000 people, with many of these having specific contacts with various Government departments.

TRANSPORT

Basildon is the "Gateway to the Games". We enjoy unrivalled transport links to and from London, the rest of Great Britain, Europe and the World. Traveling to the Olympic Village in East London from Basildon will take less than 40 minutes by rail, and four international airports can be reached within an hour from South Essex. Basildon offers quick and direct road, river and sea links.

Basildon also offers an unrivalled mix of rapid transport links to the London 2012 Games Village, offering athletes, coaches, and officials the opportunity to visit the Olympic venues.

Basildon also has an abundance of local bus routes, taxi drivers, and coach and car hire companies. There are also many cycle routes throughout the District and into neighboring areas. Basildon town centre has adequate parking provision, as does the Sporting Village facility.

Road links

An east-west corridor dominates Road links between South Essex and London, with two strategic roads (the A127 and A13) carrying significant volumes of traffic the relatively short distance to and from the capital (Basildon, in the heart of South Essex, is only 25 miles from the Olympic Park. By 2012, £630 million of further investment will have been made in our local and regional road infrastructure). Basildon already has fast access to the M25 (London's major orbital route), which provides quick access to the main motorway routes between London and the rest of the country.

Rail links

Rail links to Stratford and the Olympic Park could not be easier. The District is served by two rail lines, with trains from Wickford going direct to Stratford in 35 minutes. Trains from Basildon take only 25 minutes to West Ham, one stop from Stratford on the Jubilee Line underground.



Railway connections:

GEML

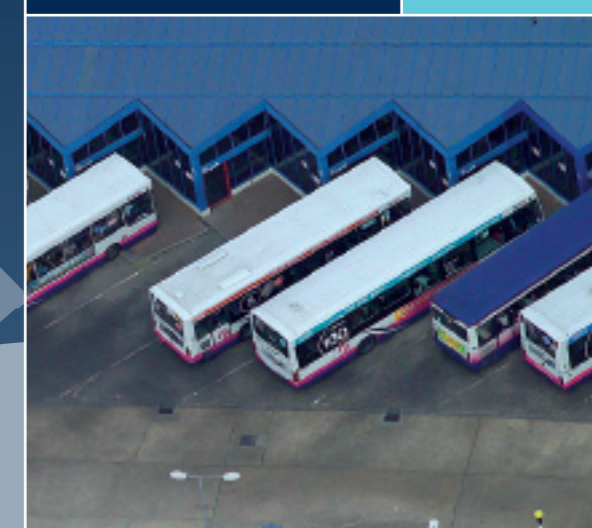
Great Eastern Main Line
Wickford – Stratford

c2c

c2c
Basildon – Fenchurch Street

CTRL

Channel Tunnel Rail Link
St. Pancras – Europe



Airport transit

In less than an hour, Basildon can be reached from four international airports.

- Stansted Airport is the fourth busiest airport in the UK and the fastest growing major airport in Europe, serving 124 destinations
- Gatwick Airport is the busiest single runway airport in the world, the second largest airport in the UK and serves over 200 destinations
- London City Airport provides flights to key UK and European cities – a direct route to the heart of East London
- Southend Airport offers national and international air travel and will have benefited from a major redevelopment prior to 2012

Southend Airport already handles European passenger and cargo services and is set to increase its flights and extend its range of destinations for both business and leisure passengers. By 2012 the airport will be well on the way to its target of catering for 20 scheduled flights in and 20 flights out per day, equal to about 1 million leisure and business passengers per year. The £25m redevelopment will deliver the newest, fastest, low cost airport in the Eastern Region of England and will also provide new hotel accommodation, a direct rail link to London and shuttle flights to and from other airports. Southend Airport also specialises as a low profile destination for VIP flights, which, given the likely attendance during the London 2012 Games of leading politicians and Heads of State, could be of great benefit.

WHAT THE BASILDON SPORTING VILLAGE CAN OFFER: *continued*



LOGISTICS/FREIGHT SERVICES

We can offer the services of a range of highly competitive local companies who can provide athletes and NOC/NPC's with a complete logistics service, managing freight during every stage of its journey from home to Basildon and back again.

LOCAL HOSTS

We will provide a team of local volunteer hosts, who will have access to support services and information. Hosts will have a range of duties, but their main objective will always be to provide friendly help and assistance.

SPECIAL ARRANGEMENTS FOR VIP AND VVIP VISITORS AND THE NOC / NPC DELEGATES

By 2012, we will be able to provide the following:

- Airside reception for athletes and officials at all of the four local airports
- Rapid transit arrangements to and from the Olympic Park
- High quality local accommodation
- Assistance from a local volunteer host / driver with appropriate language skills (if required)

- Access to senior local authority officers 24/7 – in case of emergencies
- Civic reception / hospitality with local businesses and dignitaries

PARALYMPIC ATHLETES

The new facilities at the Basildon Sporting Village will be fully accessible, and we have taken great care to ensure that we have consulted with local Paralympic / Elite disabled athletes when designing the sports facilities. Prior to 2012, we will be working with local hotels to provide a local accommodation guide that will provide full information about accessible bedrooms and facilities.

Additional information is available, covering the following:

- Venue details – technical specifications and configurations
- Location and local area information
- Local medical services, including facilities and access to medicine
- Security including layout drawings
- Trade and Industry – international links
- Statements of support for the Basildon Pre Games Training Camp



www.basildonsportingvillage.com

We are able to supply a more accessible version of the document (larger font etc) and can provide the information and technical specifications in various languages. Please email your requirements to: adam.keating@basildon.gov.uk

Roy Short
Sporting Village Project Director
T: 01268 294108
E: roy.short@basildon.gov.uk

Thames Gateway South Essex
**Where people
come alive**

Basildon Council
BASILDON • BILLERICAY • WICKFORD

Basildon
Renaissance
Partnership


Essex County Council


Communities
and Local Government


THAMES
gateway