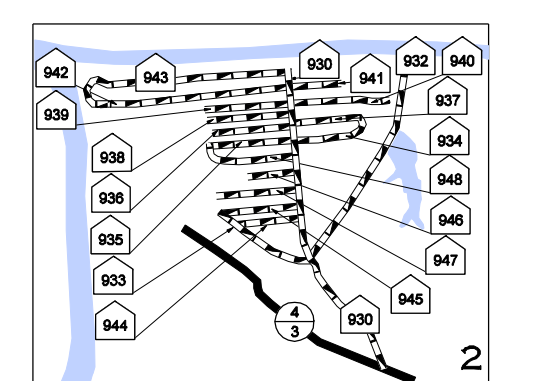
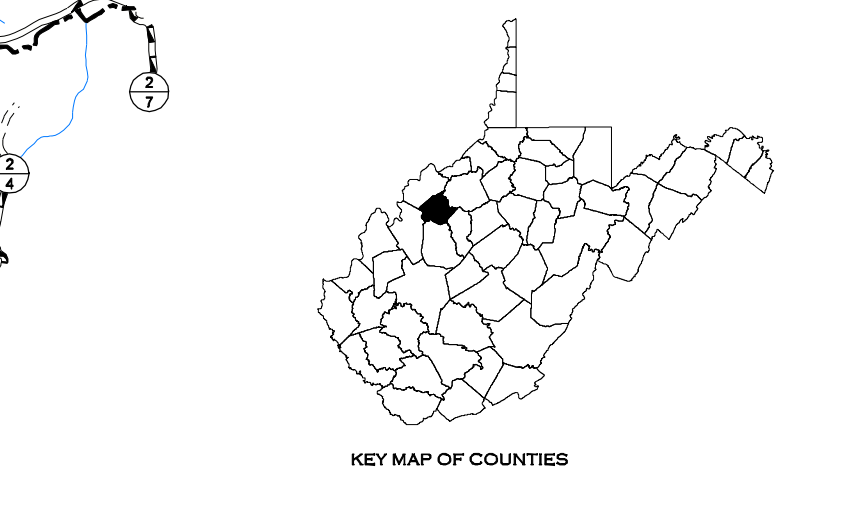
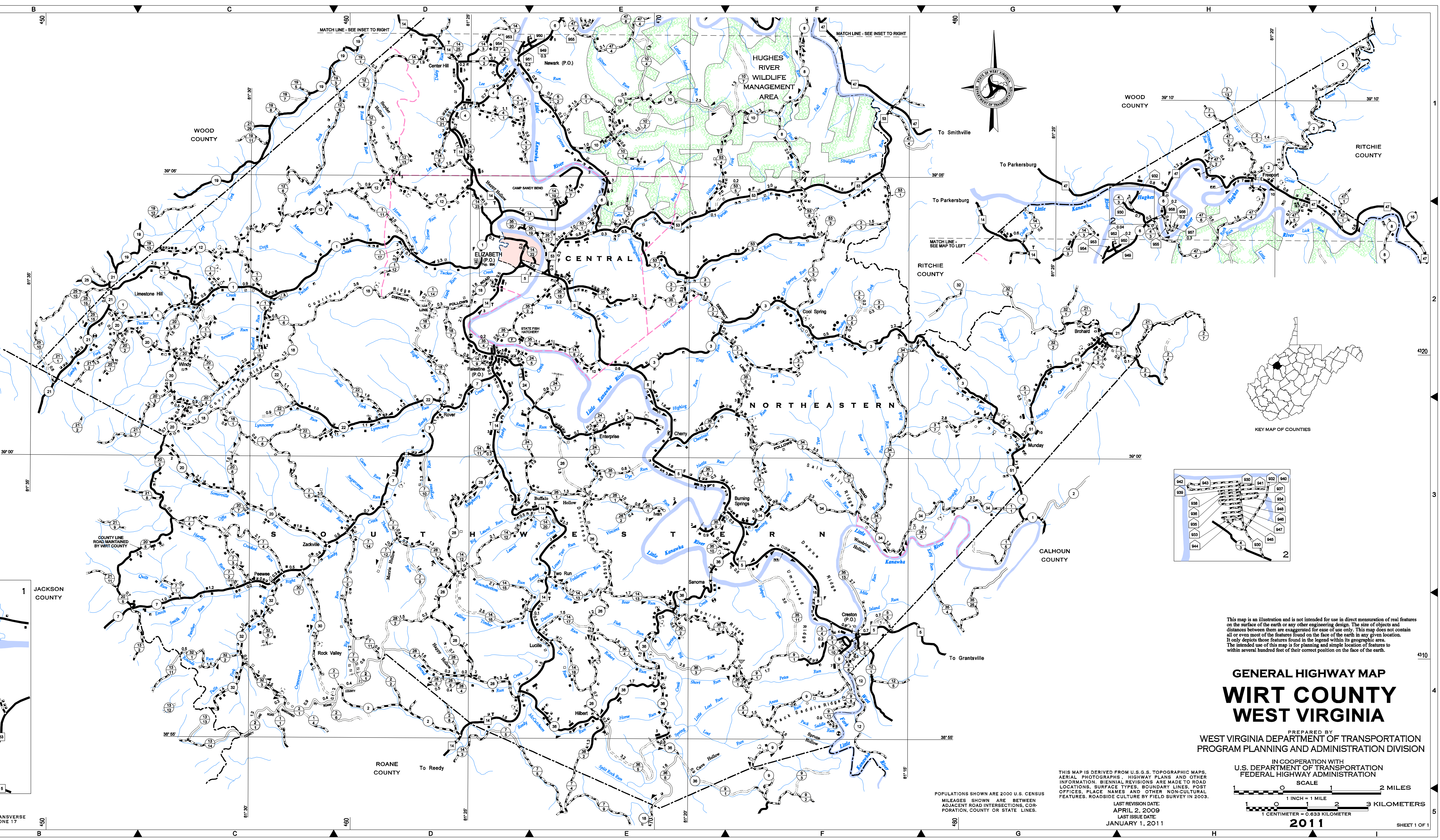


LEGEND

ROADS AND ROADWAY FEATURES	CONSERVATION OR RECREATION
TRAIL	PLAYGROUND, BALLFIELD
IMPASSABLE ROAD	BATHING BEACH OR POOL
PRIMITIVE ROAD	SCENIC SITE
UNIMPROVED ROAD	CAMPING AREA
GRADED AND DRAINED ROAD	CAMP OR LODGE
SOIL SURFACED ROAD	FOREST RANGER STATION
GRAVEL OR STONE ROAD	FISH HATCHERY
BITUMINOUS ROAD-LOW TYPE	ZOO
PAVED ROAD	LOOKOUT TOWER
DIVIDED HIGHWAY	COUNTRY CLUB
HIGHWAY SIGN SYSTEMS	GOLF COURSE
INTERSTATE ROUTE	ATHLETIC FIELD
U.S. NUMBERED HIGHWAY	AMUSEMENT PARK
WV NUMBERED HIGHWAY	FAIRGROUND OR RACE TRACK
WV PARK AND FOREST ROUTE	RIDING ACADEMY
WV COUNTY NUMBERED ROUTE	RIFLE CLUB
WV HOME ACCESS ROUTE	ROADSIDE PARK
FUNCTIONAL SYSTEMS	FARM UNIT
EXPRESSWAY	DWELLING OPERATING
TRUCKLINE	ROW OF HOUSES WITH NUMBER OF DWELLINGS
FEEDER	TRAILER PARK
STATE LOCAL SERVICE	SEASONAL DWELLING
ROADS NOT ON STATE SYSTEM	MOTEL
PRIVATE ROADS	HOSPITAL
SIDE ROADS AND STREETS	REST HOME
IN INSETS AND MUNICIPALITIES	CHURCH
U.S. FOREST SERVICE ROAD	CHURCH WITH CEMETERY
W. VA. DIV. NAT. RESOURCES ROAD	EDUCATIONAL
NAVIGATION	PUBLIC SCHOOL
TOLL FERRY	OTHER EDUCATIONAL INSTITUTIONS
RANGE LINES	MUSEUM
DOCK OR LANDING	CORRECTIONAL
NAVIGABLE STREAM	CORRECTIONAL INSTITUTION
HEAD OF NAVIGATION	COUNTY JAIL
DAM WITH LOCK	BUSINESS AND INDUSTRY
AIRPORTS	STORE OR SMALL BUSINESS
AIRPORT, COMPLETE FACILITIES	SHOPPING CENTER
AIRPORT, LIMITED FACILITIES	FACTORY OR INDUSTRIAL PLANT
LANDING AREA OR STRIP AND RUNWAYS	SEASONAL INDUSTRY
SEAPLANE BASE	MINE
AIRWAY LIGHT SIGNAL	PUBLIC SERVICE FACILITIES
RAILROADS	POST OFFICE
RAILROAD (WITH NUMBER OF TRACKS)	BUSINESS AND POST OFFICE
NARROW GAUGE RAILROAD	POWER PLANT
RAILROAD STATION	DIVISION OF HIGHWAYS GARAGE
RAILROAD CROSSING	RADIO OR TV TOWER (WITH CALL LETTERS)
RAILROAD ABOVE	FIRE HOUSE AND/OR RESCUE SQUAD
RAILROAD BELOW	STATE POLICE STATION
RAILROAD TUNNEL	FIRE HOUSE AND/OR RESCUE SQUAD
DRAINAGE	DUMP-GARBAGE, REFUSE OR TRASH
NARROW STREAM	INDUSTRIAL GRAVEYARD
WIDE STREAM	METAL SCRAP YARD
MARSH OR SWAMP	SANITARY LAND FILL
DAM WITHOUT ROAD	MISCELLANEOUS DUMP
STRUCTURES	INCINERATOR
HIGHWAY BRIDGE (WITH NUMBER OF SPANS)	SEWAGE TREATMENT PLANT
BRIDGE, GENERAL (ONE SPAN)	MISCELLANEOUS
SUSPENSION BRIDGE	MILITARY POST
TRESTLE OR GIRDER BRIDGE	ARMORY
CANTILEVER BRIDGE	GATE
DAM WITH ROAD	SINK OR DEPRESSION
HIGHWAY TUNNEL	LATITUDE AND LONGITUDE
FORD	HIGHWAY INTERCHANGE
TOLL BRIDGE	CITY AND VILLAGE CENTERS
BOUNDARIES	STATE CAPITOL
STATE LINE	COUNTY SEAT
COUNTY LINE	OTHER CITIES AND VILLAGES
MAGISTERIAL DISTRICT LINE	
INCORPORATED TOWN	
AREA ENLARGED	
INSETS	
PARK OR FOREST BOUNDARY	

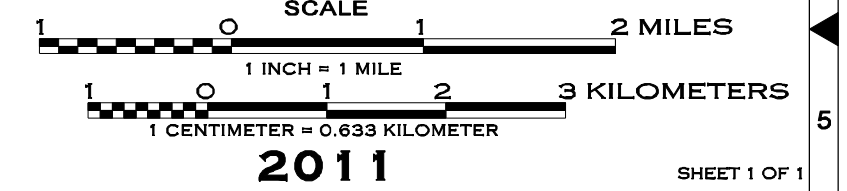


This map is an illustration and is not intended for use in direct measurement of real features on the surface of the earth or any other engineering design. The size of objects and distances between them are exaggerated for ease of use only. This map does not contain all or even most of the features found on the face of the earth in any given location. It only depicts those features found in the legend within its geographic area. The intended use of this map is for planning and simple location of features to within several hundred feet of their correct position on the face of the earth.

GENERAL HIGHWAY MAP WIRT COUNTY WEST VIRGINIA

PREPARED BY
WEST VIRGINIA DEPARTMENT OF TRANSPORTATION
PROGRAM PLANNING AND ADMINISTRATION DIVISION

IN COOPERATION WITH
U.S. DEPARTMENT OF TRANSPORTATION
FEDERAL HIGHWAY ADMINISTRATION



POPULATIONS SHOWN ARE 2000 U.S. CENSUS
MILEAGES SHOWN ARE BETWEEN
ADJACENT ROAD INTERSECTIONS, COR-
PORATION, COUNTY OR STATE LINES.

THIS MAP IS DERIVED FROM U.S.G.S. TOPOGRAPHIC MAPS,
AERIAL PHOTOGRAPHS, HIGHWAY PLANS AND OTHER
INFORMATION. BIENNIAL REVISIONS ARE MADE TO ROAD
LOCATIONS, SURFACE TYPES, BOUNDARY LINES, POST
OFFICES, PLACE NAMES AND OTHER NON-CULTURAL
FEATURES. ROADSIDE CULTURE BY FIELD SURVEY IN 2009.
LAST REVISION DATE:
APRIL 2, 2009
LAST ISSUE DATE:
JANUARY 1, 2011

Copies of this map are available to the public and to government agencies at a nominal price. Write for a MAP ORDER LIST to: West Virginia Department of Transportation, Program Planning and Administration Division, 1000 University Blvd., Charleston, WV 25309-0001. Telephone: (304) 535-3888.

10,000 METER UNIVERSAL TRANSVERSE
MEANATOR GRID TICKS, ZONE 17