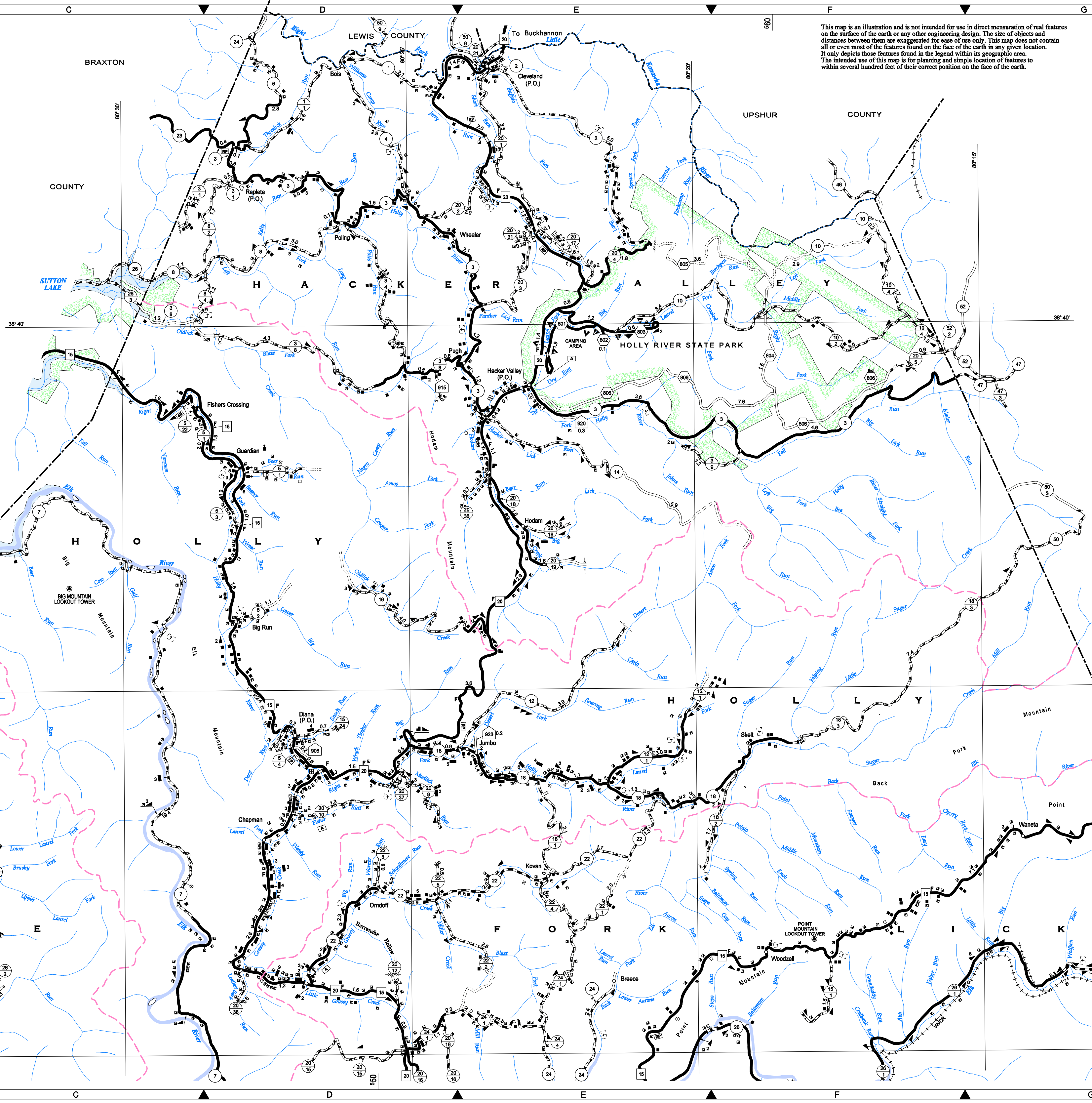
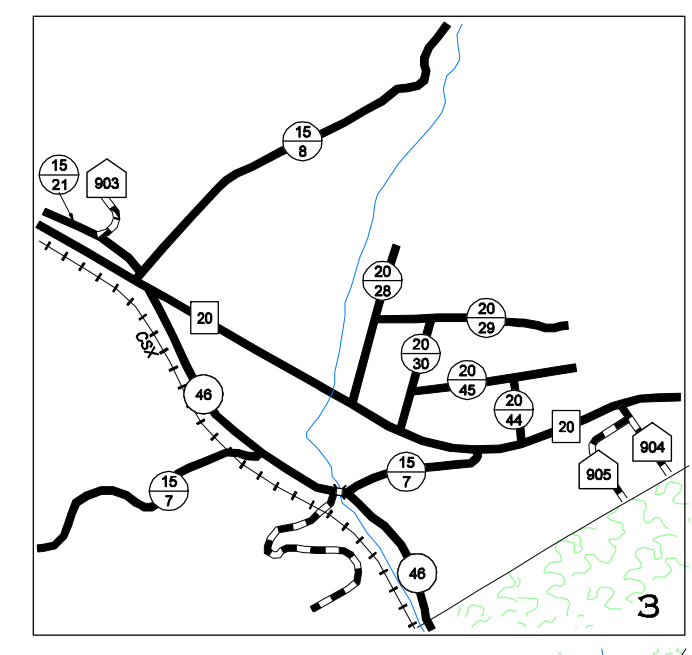
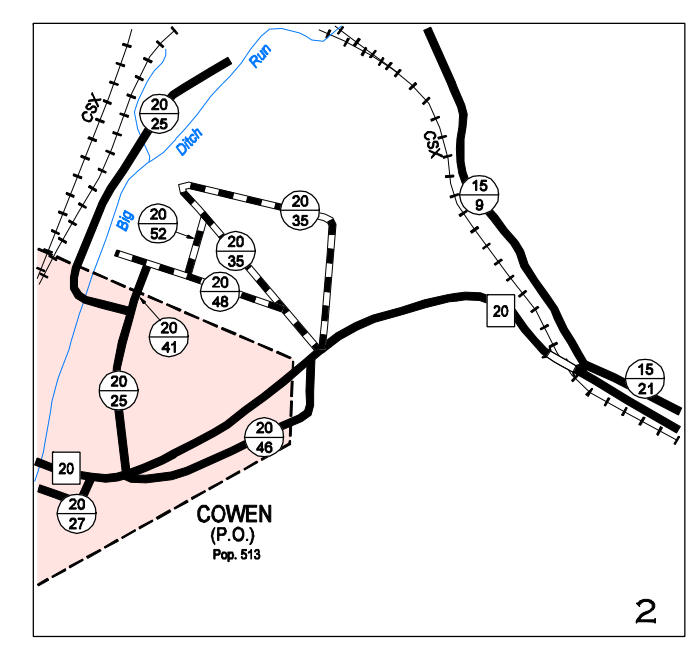


**LEGEND**

<b>ROADS AND ROADWAY FEATURES</b>	<b>CONSERVATION OR RECREATION</b>
TRAIL	PICNIC GROUNDS
IMPASSABLE ROAD	PLAYGROUND, BALLFIELD
PRIMITIVE ROAD	BATHING BEACH OR POOL
UNIMPROVED ROAD	SCENIC SITE
GRAVEL OR DRAINED ROAD	CAMPING AREA
SOIL SURFACED ROAD	FISH HATCHERY
GRAVEL OR STONE ROAD	FOREST TRAMPERS STATION
BITUMINOUS ROAD-LOW TYPE	ZOO
PAVED ROAD	LOOKOUT TOWER
DIVIDED HIGHWAY	COUNTRY CLUB
<b>HIGHWAY SIGN SYSTEMS</b>	DRIVE-IN THEATER
INTERSTATE ROUTE	ATHLETIC FIELD
U.S. NUMBERED HIGHWAY	AMUSEMENT PARK
WV NUMBERED HIGHWAY	FAIRGROUND OR RACE TRACK
WV PARK AND FOREST ROUTE	RIDING ACADEMY
WV COUNTY NUMBERED ROUTE	RIFLE CLUB
WV HOME ACCESS ROUTE	ROADSIDE PARK
<b>FUNCTIONAL SYSTEMS</b>	<b>DWELLINGS, FARM UNITS, ETC.</b>
EXPRESSWAY	FARM UNIT
TRUNKLINE	DWELLING (OTHER THAN FARM)
FEEDER	ROW OF HOUSES (WITH NUMBER OF DWELLING)
STATE LOCAL SERVICE	HOUSE AND STORE (WITH NO.)
<b>ROADS NOT ON STATE SYSTEM</b>	HOTEL
PRIVATE ROADS	MOTEL
SIDE ROADS AND STREETS	HOSPITAL
IN INSETS AND MUNICIPALITIES	REST HOME
U.S. FOREST SERVICE ROAD	CEMETERY
W. VA. DIV. NAT. RESOURCES ROAD	CHURCH WITH CEMETERY
<b>NAVIGATION</b>	<b>EDUCATIONAL</b>
TOLL FERRY	PUBLIC SCHOOL
BARGE LINE	OTHER EDUCATIONAL INSTITUTIONS
DOCK OR LANDING	COMMUNITY HALL
NAVIGABLE STREAM	MUSEUM
HEAD OF NAVIGATION	<b>CORRECTIONAL</b>
DAM WITH LOCK	CORRECTIONAL INSTITUTION
<b>AIRPORTS</b>	COUNTY FARM
AIRPORT, COMPLETE FACILITIES	<b>BUSINESS AND INDUSTRY</b>
AIRPORT, LIMITED FACILITIES	STORE OR SMALL BUSINESS
LANDING AREA OR STRIP (WITH PRIVATE FIELD)	SHOPPING CENTER
SEAPLANE BASE	FACTORY OR INDUSTRIAL PLANT
AIRWAY LIGHT BEACON	SEASONAL INDUSTRY
<b>RAILROADS</b>	MINE
RAILROAD (ANY NUMBER OF TRACKS)	SAWMILL
NARROW GAUGE RAILROAD	PUMPING STATION
RAILROAD STATION	OIL OR GAS WELLS
GRADE CROSSING	STOCK YARD, LOADING PEN
RAILROAD ABOVE	QUARRY
RAILROAD BELOW	GREENHOUSE
RAILROAD BRIDGE (WITH STREAM)	NURSERY
RAILROAD TUNNEL	<b>PUBLIC SERVICE FACILITIES</b>
<b>DRAINAGE</b>	POST OFFICE
NARROW STREAM	BUSINESS AND POST OFFICE
WIDE STREAM	POWER PLANT
MARSH OR SWAMP	ROADS OR PY TOWER (WITH LIGHTS)
DAM, WITHOUT ROAD	DIVISION OF HIGHWAYS GARAGE
<b>STRUCTURES</b>	STATE POLICE STATION
HIGHWAY BRIDGE (WITH OR WITHOUT ROAD)	FIRE HOUSE AND/OR RESCUE SQUAD
BRIDGE, GENERAL (WITH STREAM)	DUMP-GARAGE, REFUSE OR TRASH
SUSPENSION BRIDGE	AUTOMATIC GRAVEYARD
TRUSS OR GIRDER BRIDGE	METAL SCRAP YARD
CANTILEVER BRIDGE	SANITARY LAND FILL
DAM WITH ROAD	MISCELLANEOUS DUMP
HIGHWAY TUNNEL	INCINERATOR
FORD	SEWAGE TREATMENT PLANT
TOLL BRIDGE	<b>MISCELLANEOUS</b>
FOOT BRIDGE	MILITARY POST
<b>BOUNDARIES</b>	ARMORY
STATE LINE	GATE
COUNTY LINE	SINK OR DEPRESSION
MAGISTERIAL DISTRICT LINE	LATITUDE AND LONGITUDE
INCORPORATED TOWN	HIGHWAY INTERCHANGE
AREA ENLARGED (SEE SHEET)	<b>CITY AND VILLAGE CENTERS</b>
PARK OR FOREST BOUNDARY	STATE CAPITAL
	COUNTY SEAT
	OTHER CITIES AND VILLAGES



This map is an illustration and is not intended for use in direct measurement of real features on the surface of the earth or any other engineering design. The size of objects and distances between them are exaggerated for ease of use only. This map does not contain all or even most of the features found on the face of the earth in any given location. It only depicts those features found in the legend within its geographic area. The intended use of this map is for planning and simple location of features to within several hundred feet of their correct position on the face of the earth.

# GENERAL HIGHWAY MAP WEBSTER COUNTY WEST VIRGINIA

PREPARED BY  
WEST VIRGINIA DEPARTMENT OF TRANSPORTATION  
PROGRAM PLANNING AND ADMINISTRATION DIVISION

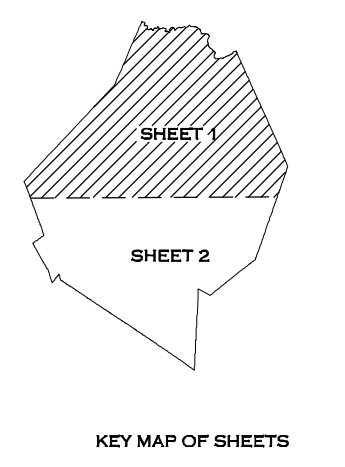
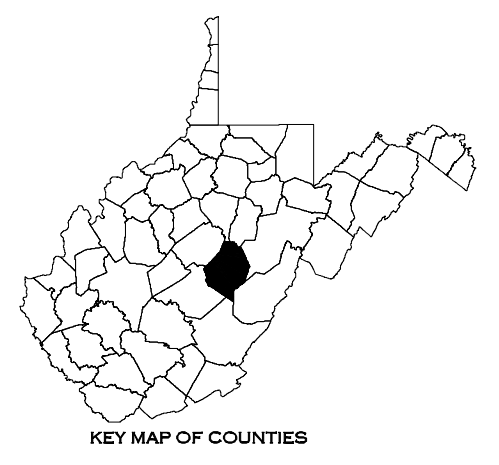
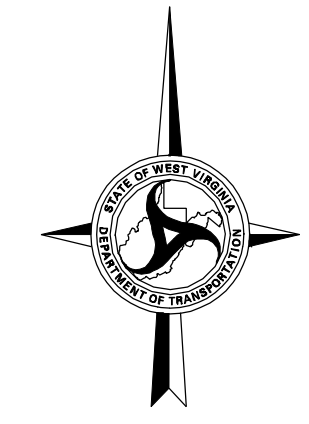
IN COOPERATION WITH  
U.S. DEPARTMENT OF TRANSPORTATION  
FEDERAL HIGHWAY ADMINISTRATION

SCALE  
1 INCH = 1 MILE  
1 CENTIMETER = 0.633 KILOMETER

2011

THIS MAP IS DERIVED FROM U.S.G.S. TOPOGRAPHIC MAPS, AERIAL PHOTOGRAPHS, HIGHWAY PLANS AND OTHER INFORMATION. BIENNIAL REVISIONS ARE MADE TO ROAD LOCATIONS, SURFACE TYPES, BOUNDARY LINES, POST OFFICES, PLACE NAMES AND OTHER NON-CULTURAL FEATURES. ROADSIDE CULTURE BY FIELD SURVEY IN 1994.

LAST REVISION DATE  
JULY 27, 2007  
LAST ISSUE DATE  
JANUARY 1, 2011  
POPULATIONS SHOWN ARE 2000 U.S. CENSUS  
MILEAGES SHOWN ARE BETWEEN  
ADJACENT ROAD INTERSECTIONS, COR-  
PORATION, COUNTY OR STATE LINES.



Copies of this map are available to the public and to government agencies at a nominal price. Write for a 2000 U.S. Census Edition to: West Virginia Department of Transportation, 100 Kanawha Blvd. S., Charleston, WV 25305-0400. Telephone: (304) 535-2866.