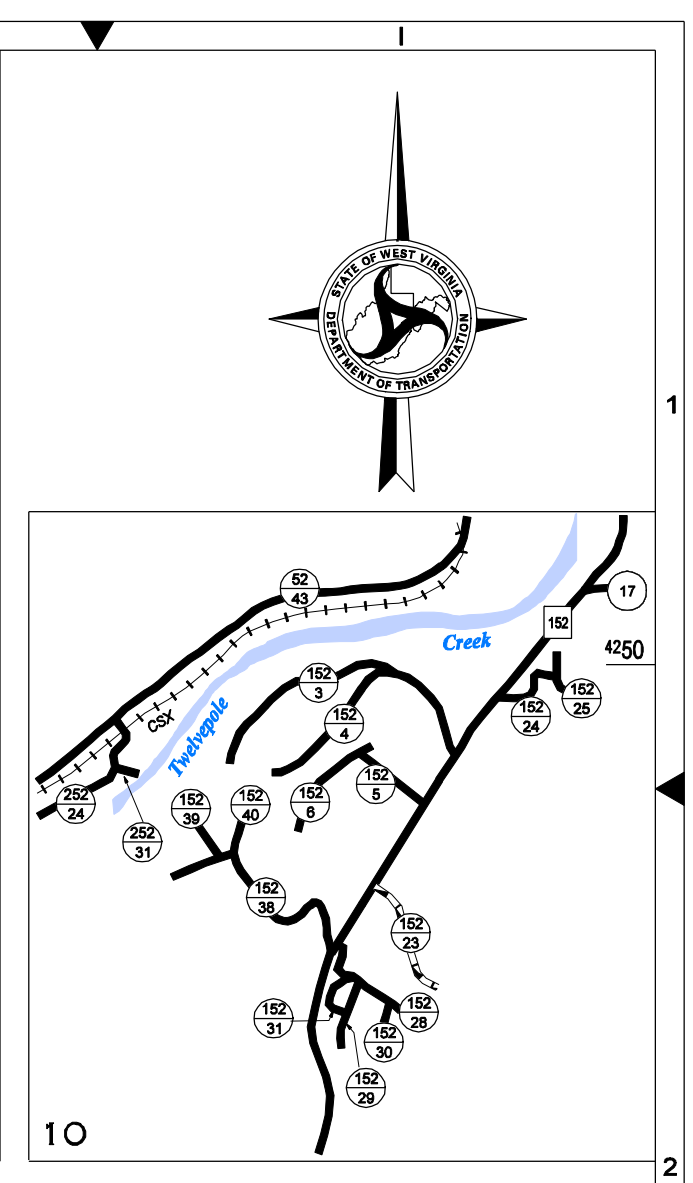
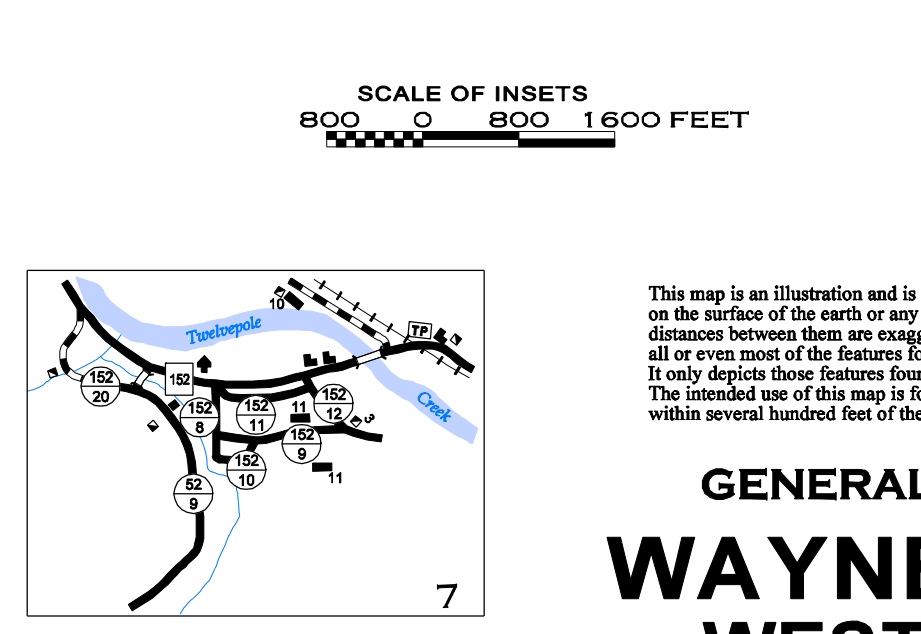
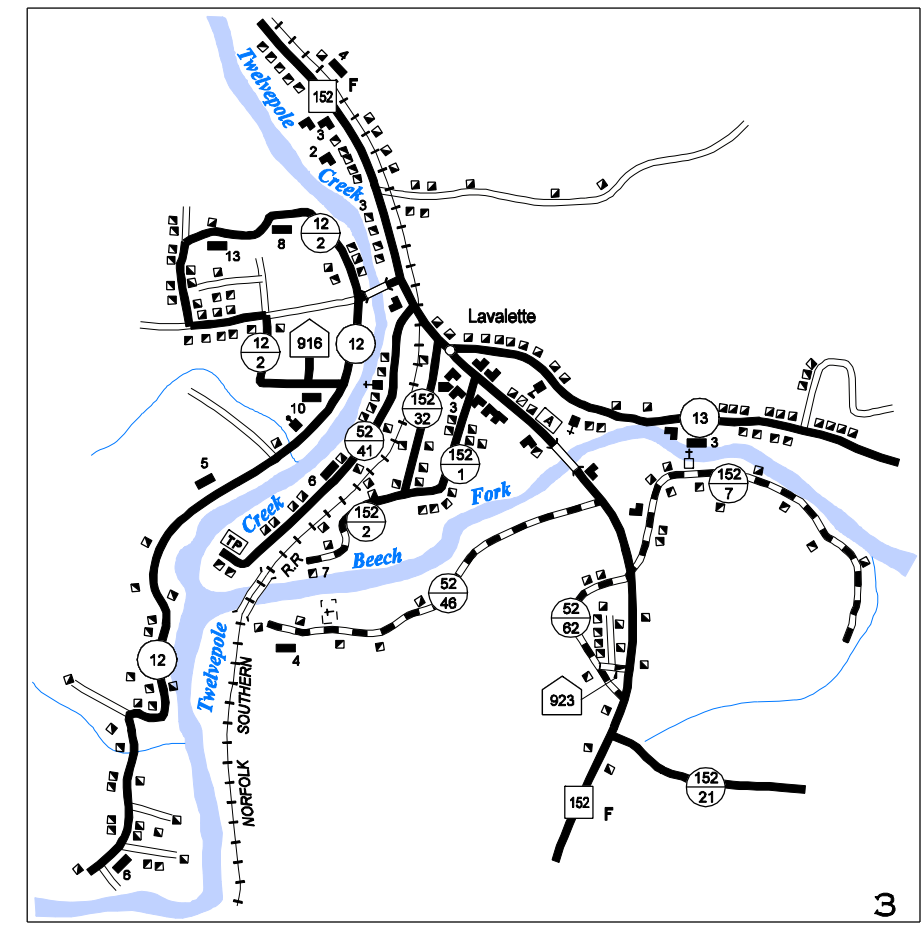
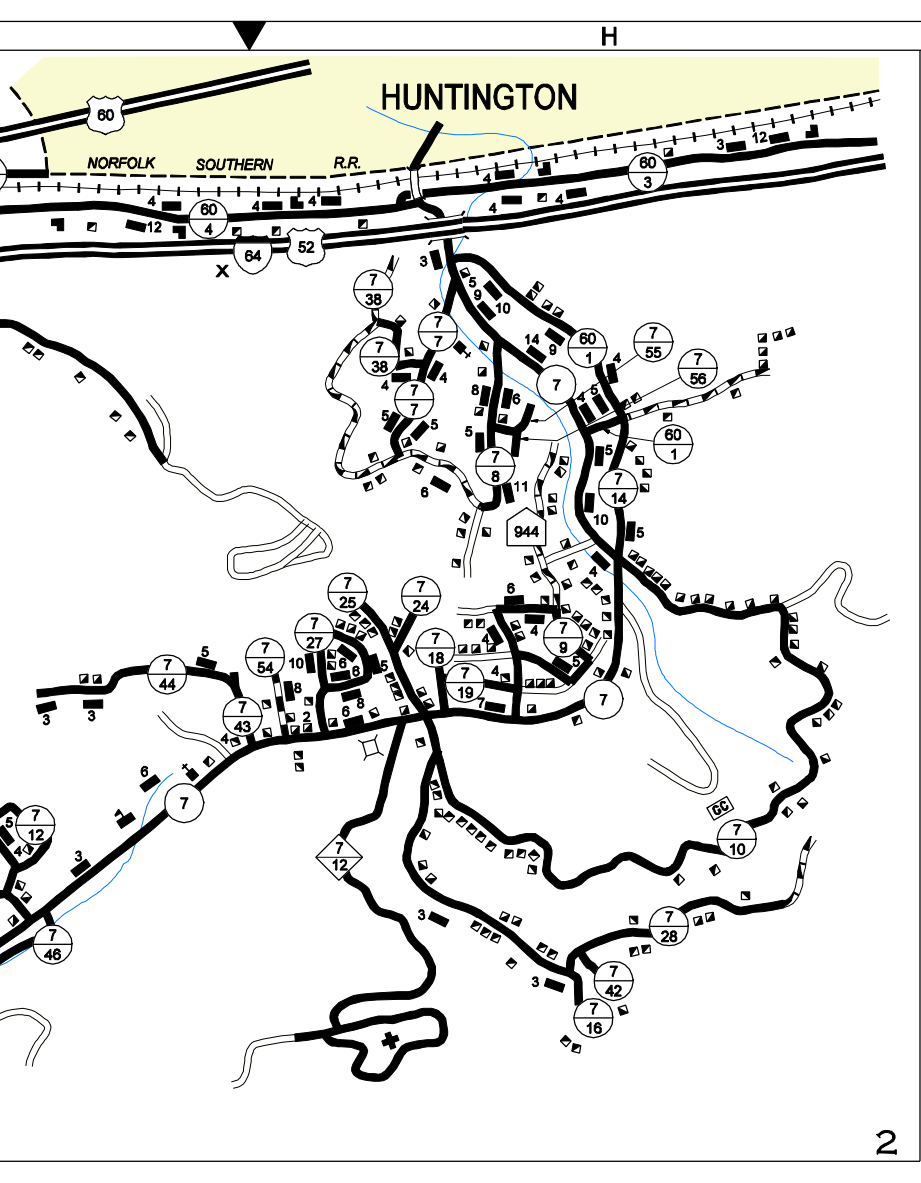
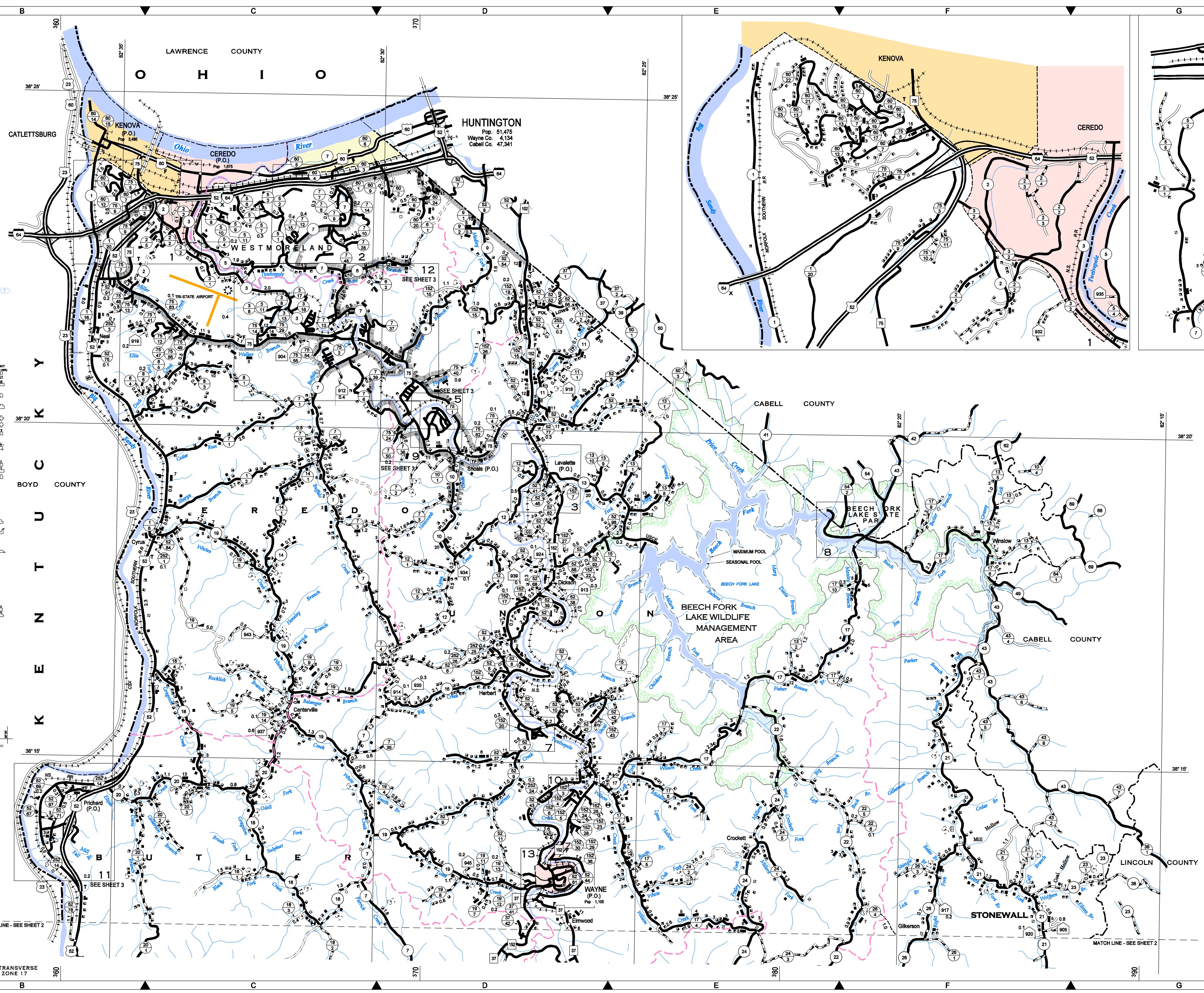


LEGEND

ROADS AND ROADWAY FEATURES	
TRAIL	SURFACE TYPES
IMPASSABLE ROAD	PRIMITIVE ROAD
UNIMPROVED ROAD	GRADED OR DRAINED ROAD
GRAVEL OR STONE ROAD	BITUMINOUS ROAD-LOW TYPE
PAVED ROAD	HIGHWAY SIGN SYSTEMS
DIVIDED HIGHWAY	INTERSTATE ROUTE
U.S. NUMBERED HIGHWAY	WV NUMBERED HIGHWAY
WV PARK AND FOREST ROUTE	WV COUNTY NUMBERED ROUTE
WV HOME ACCESS ROUTE	FUNCTIONAL SYSTEMS
EXPRESSWAY	TRUNKLINE
FEEDER	STATE LOCAL SERVICE
ROADS NOT ON STATE SYSTEM	PUBLIC ROADS
PRIVATE ROADS	SIDE ROADS AND STREETS
IN INSETS AND MUNICIPALITIES	U.S. FOREST SERVICE ROAD
W. VA. DIV. NAT. RESOURCES ROAD	NAVIGATION
TOLL FERRY	BARGE LINES
DOCK OR LANDING	NAVIGABLE STREAM
HEAD OF NAVIGATION	DAM WITH LOCK
AIRPORTS	AIRPORT, COMPLETE FACILITIES
AIRPORT, LIMITED FACILITIES	LANDING AREA OR STRIP
SEAPLANE BASE	AIRWAY LIGHT BEACON
RAILROADS	RAILROAD, UNIMPROVED
RAILROAD STATION	RAILROAD STATION
RAILROAD ABOVE	RAILROAD BELOW
RAILROAD BRIDGE	RAILROAD TUNNEL
DRAINAGE	NARROW STREAM
WIDE STREAM	MARSH OR SWAMP
DAM, WITHOUT ROAD	STRUCTURES
HIGHWAY BRIDGE	BRIDGE, GENERAL
SUSPENSION BRIDGE	TRUSS OR GIRDER BRIDGE
CANTILEVER BRIDGE	DAM WITH ROAD
HIGHWAY TUNNEL	FORD
FOOT BRIDGE	BOUNDARIES
STATE LINE	COUNTY LINE
MAJESTICAL DISTRICT LINE	INCORPORATED TOWN
AREA ENLARGED	PARK OR FOREST BOUNDARY
URBAN AREA BOUNDARY	CONSERVATION OR RECREATION
PICNIC GROUNDS	PLAYGROUND, BALLFIELD
BATHING BEACH OR POOL	SCENIC SITE
CAMPING AREA	CAMP OR LODGE
FOREST HANGER STATION	FISH HATCHERY
ZOO	COUNTRY CLUB
GOLF COURSE	DRIVE-IN THEATER
ATHLETIC FIELD	AMUSEMENT PARK
FAIRGROUND OR RACE TRACK	RIDING ACADEMY
HOTEL	REST HOME
CHURCH	CEMETERY
CHURCH WITH CEMETERY	EDUCATIONAL
PUBLIC SCHOOL	OTHER EDUCATIONAL INSTITUTIONS
COMMUNITY HALL	MUSEUM
CORRECTIONAL	CORRECTIONAL INSTITUTION
COUNTY FARM	BUSINESS AND INDUSTRY
STONE OR SMALL BUSINESS	SHOPPING CENTER
FACTORY OR INDUSTRIAL PLANT	SEASONAL INDUSTRY
MINE	SAWMILL
PUMPING STATION	OIL OR GAS WELLS
QUARRY	STOCK YARD, LOADING PEN
GREENHOUSE	NURSERY
PUBLIC SERVICE FACILITIES	POST OFFICE
BUSINESS AND POST OFFICE	POWER PLANT
RADIO OR TV TOWER	DIVISION OF HIGHWAYS GARAGE
STATE POLICE STATION	FIRE HOUSE AND/OR RESCUE SQUAD
MISCELLANEOUS	DUMP-GARAGE, REFUSE OR TRASH
MILITARY POST	ARMORY
GATE	LATITUDE AND LONGITUDE
CITY AND VILLAGE CENTERS	STATE CAPITAL
COUNTY SEAT	OTHER CITIES AND VILLAGES

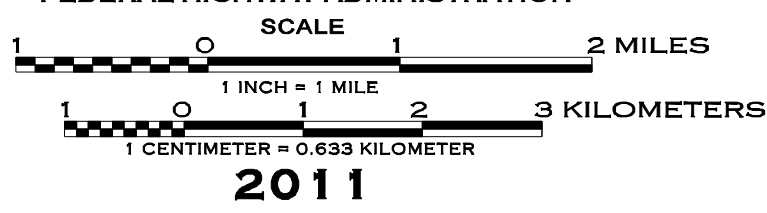


SCALE OF INSETS
800 0 800 1600 FEET

**GENERAL HIGHWAY MAP
WAYNE COUNTY
WEST VIRGINIA**

PREPARED BY
WEST VIRGINIA DEPARTMENT OF TRANSPORTATION
PROGRAM PLANNING AND ADMINISTRATION DIVISION

IN COOPERATION WITH
U.S. DEPARTMENT OF TRANSPORTATION
FEDERAL HIGHWAY ADMINISTRATION



POPULATIONS SHOWN ARE 2000 U.S. CENSUS MILEAGES SHOWN ARE BETWEEN ADJACENT ROAD INTERSECTIONS, CORPORATION, COUNTY OR STATE LINES.
THIS MAP IS DERIVED FROM U.S.G.S. TOPOGRAPHIC MAPS, AERIAL PHOTOGRAPHS, HIGHWAY PLANS AND OTHER INFORMATION. BIENNIAL REVISIONS ARE MADE TO ROAD LOCATIONS, SURFACE TYPES, BOUNDARY LINES, POST OFFICES, PLACE NAMES, AND OTHER NON-CULTURAL FEATURES. ROADSIDE CULTURE BY FIELD SURVEY IN 1995.
LAST REVISION DATE: MAY 4, 2010
LAST ISSUE DATE: JANUARY 1, 2011

Copyright of this map were available to the public under the government information act of 1967. The map was prepared by the West Virginia Department of Transportation, Map Section, 1500 Kanawha Boulevard East, Charleston, West Virginia 25305. Telephone: (304) 535-2886.