



Tennyson House
Montpelier Row, Twickenham



Tennyson House

A recently restored early Georgian townhouse in a peaceful location overlooking Marble Hill Park, with a walled garden and separate studio cottage.

first floor drawing room / library

kitchen / dining / family room

secondary kitchen & conservatory

principal suite with dressing room & bathroom

2/3 further bedrooms & bathroom

self-contained staff or guest apartment

cottage with 2 bedrooms, studio, kitchen & bathroom

garage plus off-street parking for 3 cars

walled garden of about 150 feet, plus additional garden

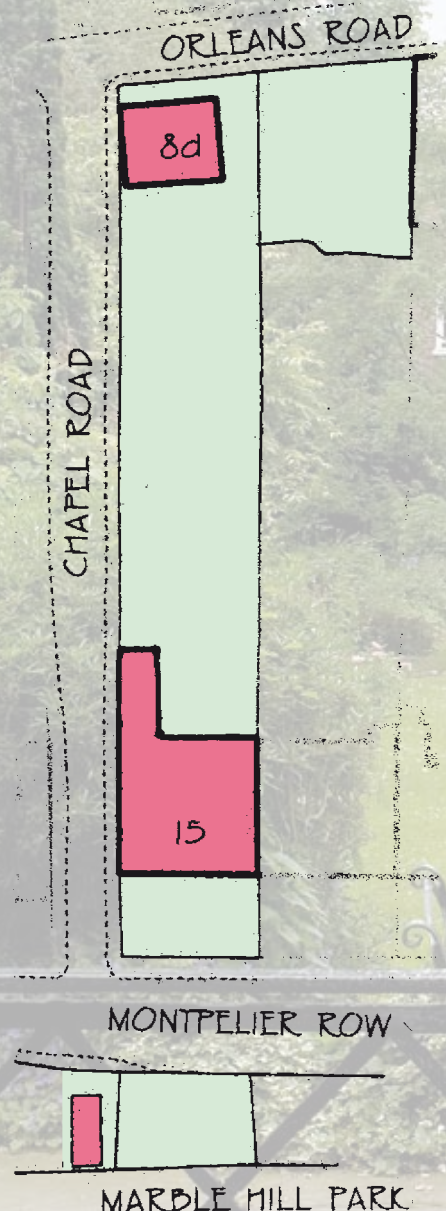
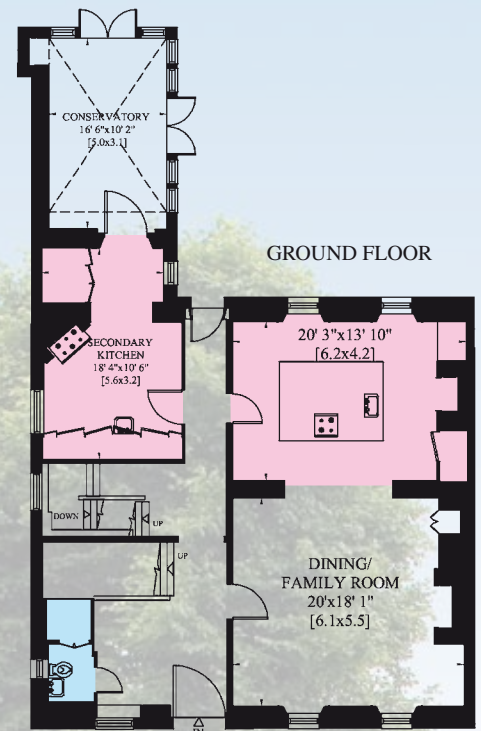
Montpelier Row is considered one of the finest surviving examples of early Georgian architecture, and number 15, Tennyson House, facing directly over the park and listed Grade II*, is of particular interest for its outstandingly well-preserved interior that includes a superb staircase and original pine panelling and shutters.

Built in about 1721 by retired naval officer Captain John Gray, the house was previously known as Chapel House or Holyrood House. Its present name derives from the then newly married and recently appointed Poet Laureate who occupied it between March 1851 and November 1853. Tennyson's son Hallam (named after his close friend Arthur Hallam, whose tragically early death inspired the passionate elegy *In Memoriam*, published in 1850) was born at the house on 11th August 1852. Visitors during Tennyson's tenure included Thackeray, Carlyle, Millais and Browning.

Montpelier Row is conveniently placed for amenities such as shopping within a few minutes' walk at St Margarets, where there are numerous cafes, restaurants and pubs, and a railway station – from which eight trains an hour run to Waterloo, journey time approximately 28 minutes. More comprehensive shopping and facilities are within a mile or so at Twickenham and Richmond.

The studio cottage is located at the end of the south-west facing garden and independently approached from Orleans Road. Believed to have been built in the 1920s as an artist's studio, it features a first floor panelled studio with a large north-facing window and ceiling height of over 13 feet.

Alongside the cottage and with frontage onto Orleans Road is an additional area of walled garden considered suitable for construction of a further cottage, subject to necessary consents.



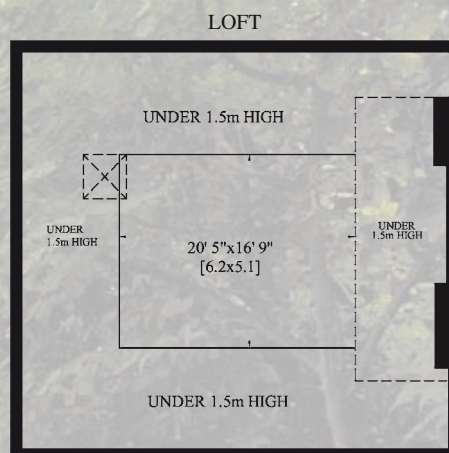
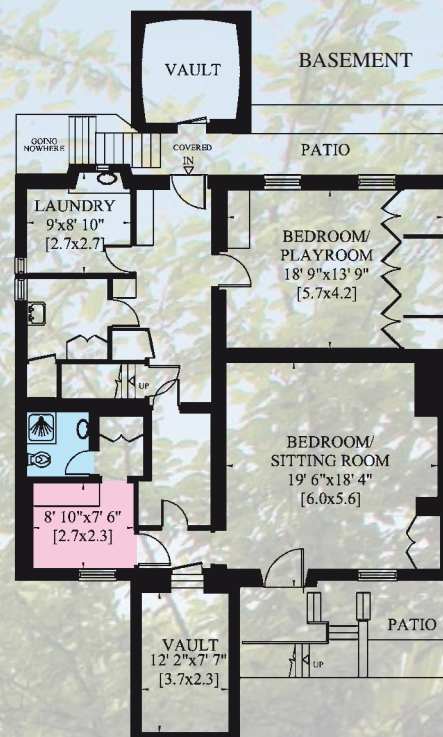
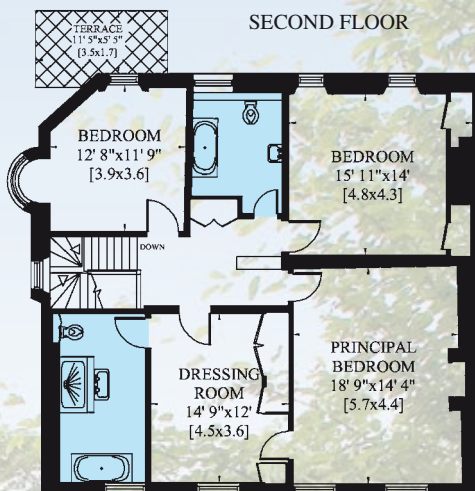
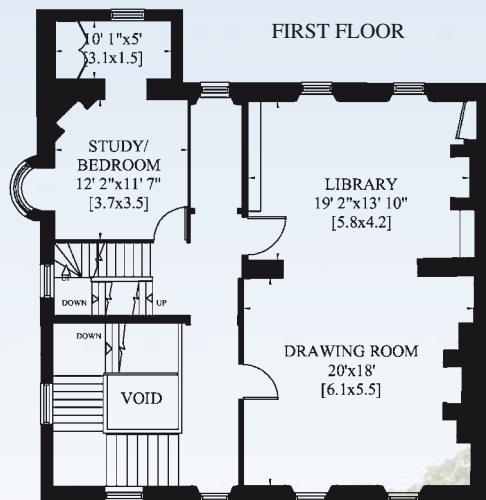
15 Montpelier Row

gross internal area: 495 sq metres / 5,337 sq feet

vault & loft: 125 sq metres / 1341 sq feet

garage: 14 sq metres / 155 sq feet

total gross interior area: 634 sq metres / 6,833 sq feet

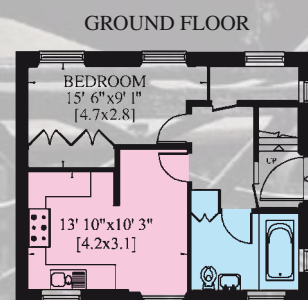
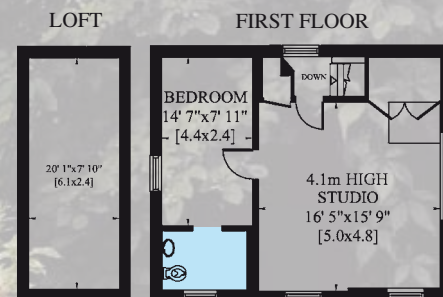


8d Orleans Road

gross internal area: 88 sq m / 947 sq ft

loft: 15 sq metres / 158 sq feet

total gross interior area: 103 sq metres / 1,105 sq feet



These plans are for guidance only and must not be relied upon as statements of fact.

Areas, measurements or distances referred to are approximate only.

Please be aware that descriptions of property are inevitably subjective. Those given here are intended to be fair and accurate, but they are prepared for guidance only and do not form part of any offer or contract.

No responsibility is taken for errors, omissions or mis-statements.

Pereds make no representations nor give any warranty whatever either during negotiations, in particulars, or elsewhere.





PEREDS

Portland House, Portland Road, Holland Park, London W11 4LA
telephone: +44 (0)20 7221 1404 fax: +44 (0)20 7229 0077