

The Kentucky College and Career Readiness High School Feedback Report is collaboratively produced by Kentucky's Council on Postsecondary Education (CPE), the Kentucky Department of Education (KDE), the Kentucky Higher Education Assistance Authority (KHEAA), and the P-20 Data Collaborative. Its purpose is to provide information about this school's 2008 class of high school seniors including the number who graduated and subsequently enrolled in postsecondary institutions and their level of college and career readiness as compared to their peers from the district and the state as a whole. All college-going information in this report is for 2008 high school graduates who entered postsecondary education in the summer or fall of 2008 and not later.

High School Performance

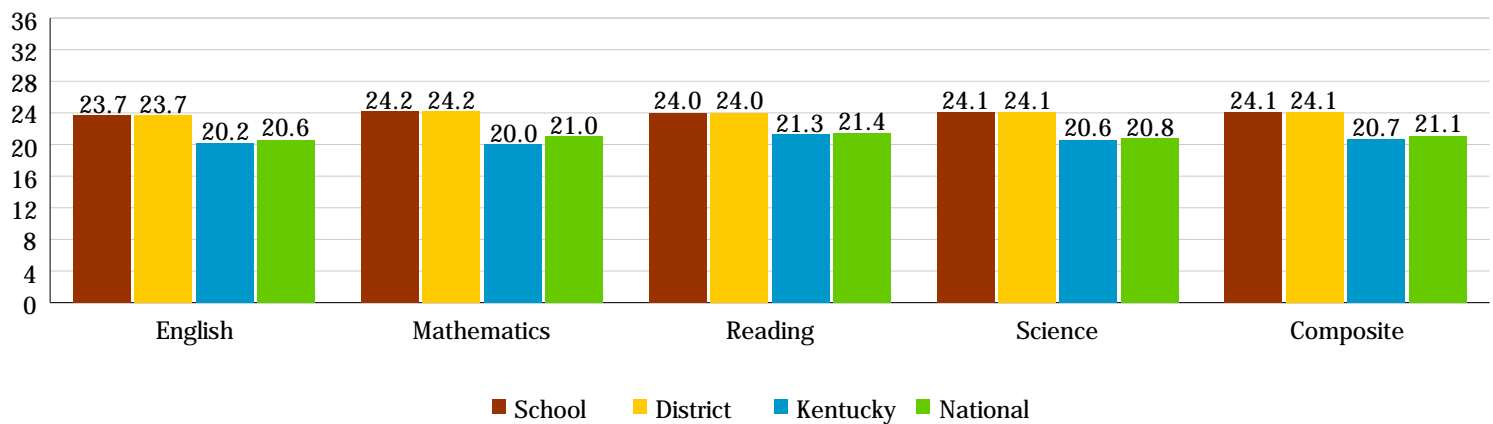
These numbers provide an overview of this school's graduating class of 2008. District numbers may include alternative high schools. Refer to the Technical Notes for an explanation of dashes.

	School	District	Kentucky
1. Number of high school graduates	203	203	43,362
2. Average high school GPA	3.07	3.07	2.94
3. Average ACT scores for this class			
English	23.7	23.7	20.2
Mathematics	24.2	24.2	20.0
Reading	24.0	24.0	21.3
Science	24.1	24.1	20.6
Composite	24.1	24.1	20.7
4. Number of Advanced Placement (AP) tests taken by members of this class	204	204	10,557
5. Percentage of Advanced Placement (AP) tests with scores of 3 or higher (the minimum necessary to receive college credit)	67.2%	67.2%	48.8%
6. Average Kentucky Educational Excellence Scholarship (KEES) award earned by members of this class	\$1,369	\$1,369	\$1,097
7. High school graduation rate	97.6%	97.6%	84.5%
8. In-state college-going rate	62.6%	62.6%	56.8%
9. Out-of-state college-going rate	23.6%	23.6%	6.2%
10. Overall college-going rate	86.2%	86.2%	63.0%

Important Statistics

High school graduation rate	97.6%
College-going rate	86.2%
Percentage with developmental needs in one or more subjects	22.0%
Percentage with developmental needs in English	8.5%
Percentage with developmental needs in mathematics	13.6%

Average ACT Scores



Note: The 2008 Kentucky ACT benchmarks for college and career readiness were scores of 18 in English, Mathematics, and Reading.

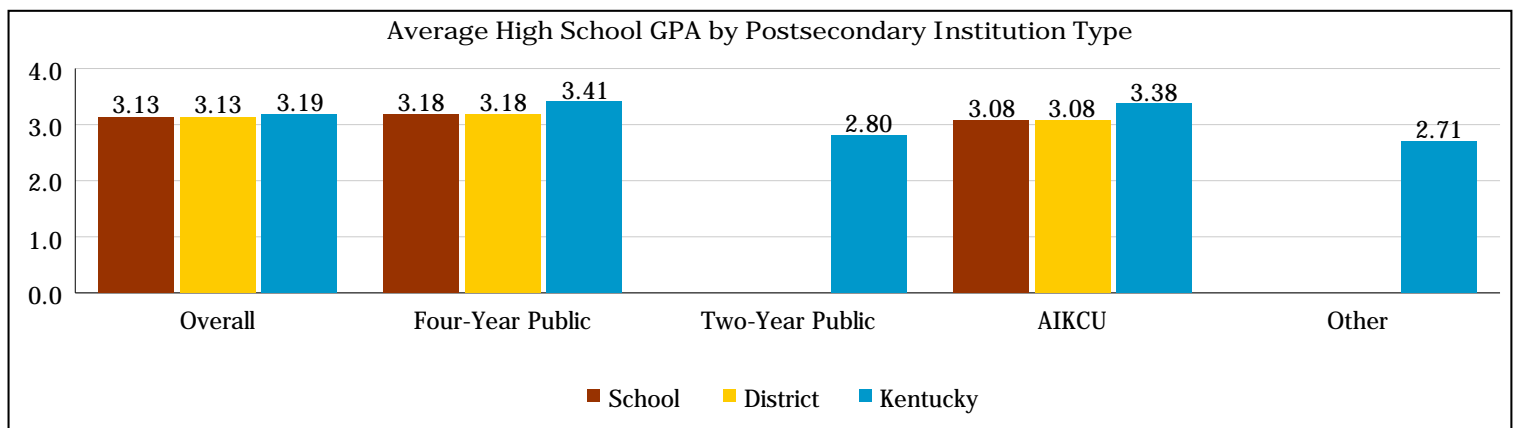
For more information, including technical notes, please visit <http://cpe.ky.gov/info/hsfr/> or e-mail cpe.hsfpr@ky.gov.

Sept 10, 2010

In-State Postsecondary Enrollment Characteristics

These numbers show the types of postsecondary institutions and programs selected by the graduating class of 2008 and make the link between high school performance and postsecondary institution type. The information in item 1.c is only available for public colleges and universities in Kentucky and Association of Independent Kentucky Colleges and Universities (AIKCU) institutions. District numbers may include alternative high schools. Refer to the Technical Notes for an explanation of dashes.

	School	District	Kentucky
1. College enrollment of 2008 graduates entering college in-state	125	125	23,286
a. Type of college or university attended			
Four-year public university	103	103	12,713
	82.4%	82.4%	54.6%
Two-year public community or technical college (KCTCS)	4	4	6,501
	3.2%	3.2%	27.9%
Association of Independent Kentucky Colleges and Universities (AIKCU) member institution	18	18	3,372
	14.4%	14.4%	14.5%
Other in-state college or university	0	0	700
	0.0%	0.0%	3.0%
b. Started college full-time	122	122	21,115
	97.6%	97.6%	90.7%
c. Degrees sought			
Bachelor's degree	101	101	13,603
	80.8%	80.8%	60.2%
Associate degree	8	8	4,586
	6.4%	6.4%	20.3%
Certificate or diploma	0	0	536
	0.0%	0.0%	2.4%
Undeclared or nondegree	16	16	3,860
	12.8%	12.8%	17.1%
2. Average high school GPA of 2008 graduates entering college in-state			
Overall mean for students entering any Kentucky postsecondary institution	3.13	3.13	3.19
Four-year public university	3.18	3.18	3.41
Two-year public community or technical college (KCTCS)	-	-	2.80
Association of Independent Kentucky Colleges and Universities (AIKCU) member institution	3.08	3.08	3.38
Other in-state college or university	-	-	2.71

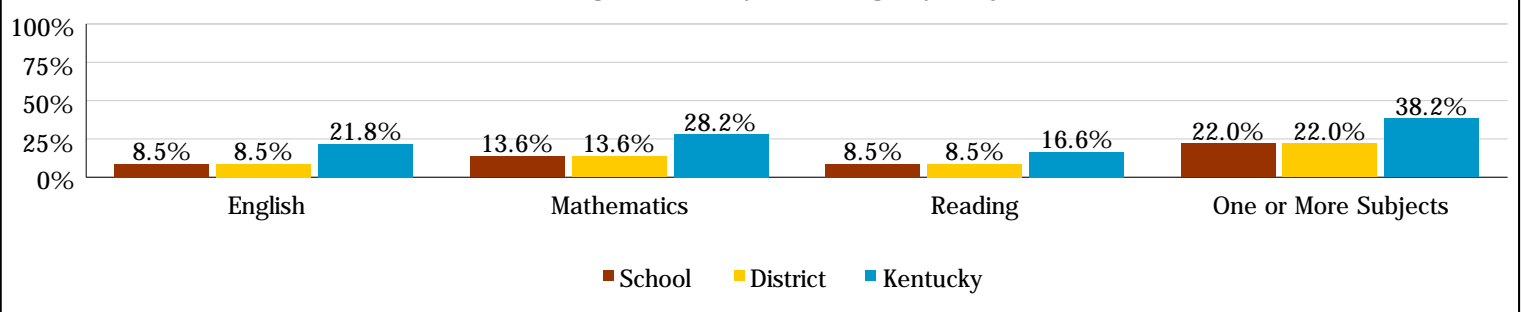


College Readiness Details

These numbers explore the link between college readiness and type of postsecondary institution attended and show college readiness levels. These data can help students, parents, and educators understand the typical ACT scores of students accepted for admission at different types of postsecondary institutions. This information is only available for students who entered public colleges and universities in Kentucky or Association of Independent Kentucky Colleges and Universities (AIKCU) institutions that submitted entrance exam data. District numbers may include alternative high schools. Refer to the Technical Notes for an explanation of dashes.

	School	District	Kentucky
1. Average ACT scores of 2008 graduates entering college in-state			
English	23.6	23.6	21.6
Mathematics	24.1	24.1	21.0
Reading	25.1	25.1	22.8
Science	23.9	23.9	21.6
Composite	24.1	24.1	21.7
2. Average ACT scores of 2008 graduates entering college in-state, by institution type			
a. Four-year public university			
English	24.1	24.1	22.7
Mathematics	24.5	24.5	22.0
Reading	25.8	25.8	23.9
Science	24.3	24.3	21.6
Composite	24.6	24.6	22.7
b. Two-year public community or technical college (KCTCS)			
English	-	-	18.4
Mathematics	-	-	18.4
Reading	-	-	20.0
Science	-	-	19.5
Composite	-	-	19.0
c. Association of Independent Kentucky Colleges and Universities (AIKCU) member institution			
English	20.9	20.9	21.6
Mathematics	22.6	22.6	20.7
Reading	19.0	19.0	22.8
Science	21.4	21.4	21.7
Composite	21.0	21.0	21.6
3. Percentage not ready for college, 2008 graduates entering college in-state (received an ACT subject score of less than 18 or an equivalent score on an alternative test)			
English	8.5%	8.5%	21.8%
Mathematics	13.6%	13.6%	28.2%
Reading	8.5%	8.5%	16.6%
Not college-ready in one or more subjects	22.0%	22.0%	38.2%

Percentage Not Ready for College by Subject

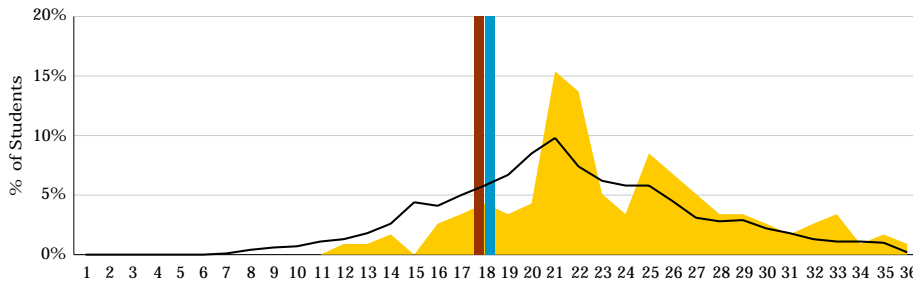


ACT Score Distributions of College-Going Students

Each graph depicts the distribution of ACT scores among college entrants from the class of 2008 and compares high school and state distributions. Kentucky ACT college readiness benchmarks are minimum scores at which students place out of non-credit-bearing developmental or remedial education courses in a given subject. Red bars indicate the 2008 benchmarks and blue bars indicate the revised benchmarks for 2010 and later. No benchmark score has been established for science. This information is only available for students who entered public colleges and universities in Kentucky or Association of Independent Kentucky Colleges and Universities (AIKCU) institutions that submitted entrance exam data.

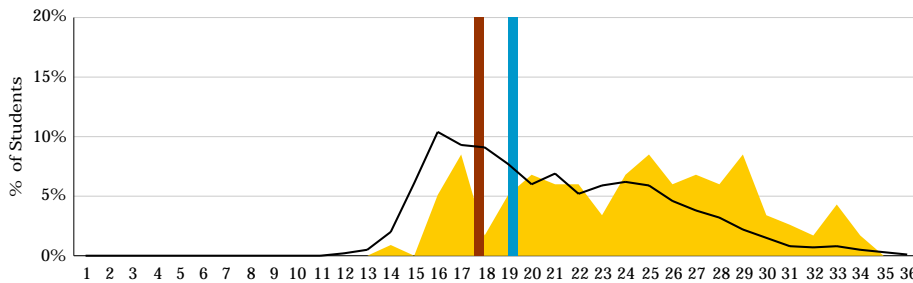
■ School Score
 — State Score
 ■ Benchmark Score 2008
 ■ Benchmark Score 2010

English



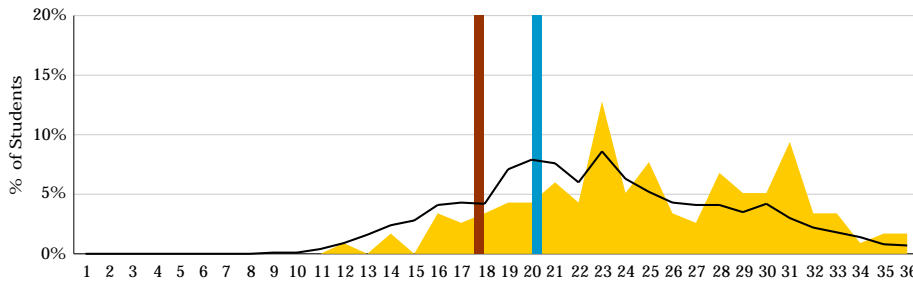
Note: The 2008 Kentucky ACT benchmark for college readiness in English was a score of 18 and is unchanged under the new 2010 benchmarks. Eighteen is also the score ACT, Inc., recommends for college readiness.

Mathematics



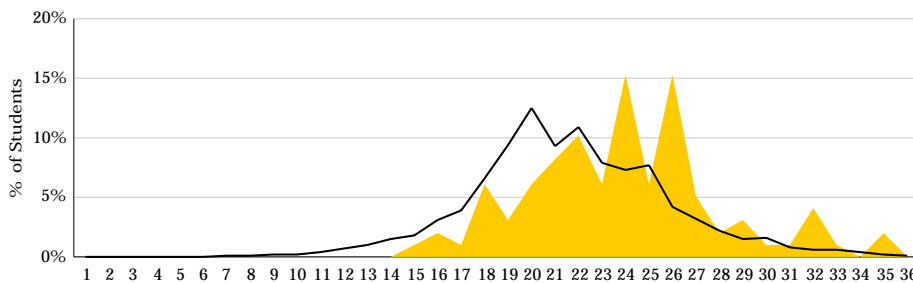
Note: The 2008 Kentucky ACT benchmark for college readiness in mathematics was 18, and changes to 19 for the entering class of 2010. This is the minimum score needed for placement in credit-bearing mathematics and does not guarantee entrance into all majors, especially majors in the STEM fields. The state benchmark for placement into college algebra is 22 and 27 for calculus. The score recommended by ACT, Inc., as a benchmark for college readiness in mathematics is 22.

Reading



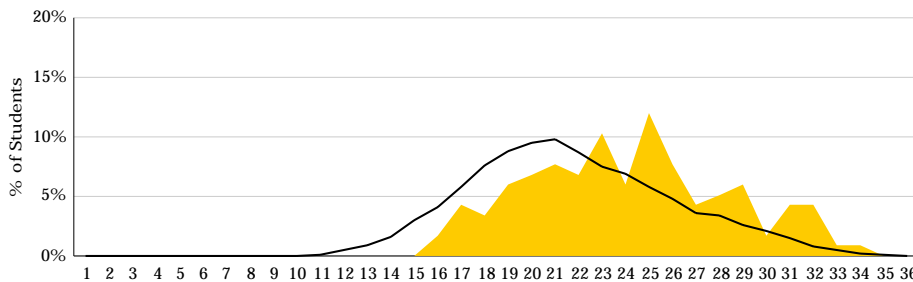
Note: The 2008 Kentucky ACT benchmark for college readiness in reading was 18, and will rise to 20 for the entering class of 2010. The score recommended by ACT, Inc., as a benchmark for college readiness in reading is 21.

Science



Note: A Kentucky ACT benchmark for college readiness in science has not been established. The score recommended by ACT, Inc., as a benchmark for college readiness in science is 24.

Composite



Note: No ACT composite score benchmarks for college readiness have been established by the state or recommended by ACT, Inc.

Colleges and Universities Attended and College Majors

These numbers show the Kentucky colleges and universities in which the class of 2008 enrolled and the majors that they declared. College majors are only available for students who entered public colleges and universities in Kentucky or Association of Independent Kentucky Colleges and Universities (AIKCU) institutions. Majors were not reported for some students.

Colleges and Universities Attended		College Majors	
	Students		Students
Four-year public university		Major Undeclared	45
University of Kentucky	36	Biological and Biomedical Sciences	12
Northern Kentucky University	33	Business, Management and Marketing	11
University of Louisville	19	Health Professions	11
Eastern Kentucky University	5	Education	7
Morehead State University	4	Engineering	6
Murray State University	4	Physical Sciences	6
Western Kentucky University	2	Communications and Journalism	4
Two-year public community or technical college (KCTCS)		Parks, Recreation, Leisure and Fitness Studies	4
Bluegrass CTC	3	Psychology	4
Maysville CTC	1	Social Sciences	4
Association of Independent Kentucky Colleges and Universities member institution		Computer and Information Sciences	2
Transylvania University	8	English Language and Literature	2
Union College	5	Security and Protective Services	2
Georgetown College	2	Visual and Performing Arts	2
Bellarmine University	1	History	1
Centre College	1	Liberal Arts and Humanities	1
Thomas More College	1	Natural Resources and Conservation	1
Out-of-state	48		