

## Council opposes role as levy collector for State

WHYALLA Council has again disputed its role as a collection agency imposed on it by the State Government to fund the Eyre Peninsula Natural Resources Management Board.

It strongly favours a state-wide levy system imposed and collected by the government for the State to fund the boards, not a levy through local government.

Whyalla Council residents will fund one-third of the Eyre region contributions in the coming financial year – \$584,471 of the \$1,746,000 total.

Council believes this is an excessive amount when the city sees little in return in regards to projects in its area.

The total amount of levy collected from Whyalla will have increased \$104,456, or almost 22%, from \$480,015. The increase will result through a \$10 per property lift from \$45 to \$55.

In a letter opposing the current system, Acting Chief Executive Officer Migelle Hiscock, said the economic downturn had seen a negative impact on Whyalla and many of its residents.

“Council finds it increasingly more important that we voice our concern about the level of these increases, particularly when significantly above the 6% general rate rise,” Mrs Hiscock said.

It is also proposed that Whyalla's contribution rise by a further \$5 per rateable property to \$60 during 2011/2012. This will take the city's contribution to \$637,600 and is seen as being “even more inequitable to Whyalla residents.”

Considering the level of funds contributed by the Whyalla community, Council has requested details of outcomes of past and future projects for the Eyre region including those specifically aimed at the Whyalla community, copies of financial statements of the Eyre region over the past three years, and a copy of the region's budget for 2010/2011.



## Double celebration with free sausage sizzle!

# Opening of new park as Council turns 40 on July 4

INTENSIVE development during the past 12 months culminates on July 4 with the official public opening of Jessop-White Park in Whitehead Street.

A three-hour celebration will be held from 11am with an official ceremony performed by Mayor Jim Pollock at Noon. The day also marks the 40th anniversary local government in Whyalla with a fully elected city council.

Mayor Pollock has issued an open invitation for residents to join him for the celebrations which include:

- Free sausage sizzle with 700 sausages being supplied.
- Free Devonshire Tea served in the former guide hall.
- One of Whyalla's favourite bands “Bad, Bad Boys.”
- Free bouncy castle for children and clowns.

The development has been funded by Whyalla Council, the Environment Consultation

Group and One Steel Whyalla. Community consultation was undertaken by the three bodies to held develop and design the park. It is named after two long-time residents – Kay Jessop and Doug White – who have had lengthy involvements with Girl Guides and Whyalla Concert Band on the site.

Ms Jessop was a guide leader for more than 20 years in the former guide hall, opposite the police station, which has been restored as part of the park project. The corrugated iron hall was built in 1927 and will become available as a community facility with Girl Guides having relocated.

Mr White joined the Whyalla Brass Band, later known as the Whyalla Concert Band, in 1940 – two years after the band hall on the McBryde Terrace/Farrell Street corner was built. The solid stone and brick building has also been restored. Mr White is the longest serving band member of almost 70 years.

The park has been developed to provide a community open space

recreational facility adjacent to the City Plaza, while enhancing the appearance of the area.

The project started in early 2007 with the restoration of a historic in-ground water supply tank and establishment of a grassed area.

Progress slowed while heritage conservation studies were undertaken on the two buildings, and various plans were reviewed.

A new working party was formed around 12 months ago under the leadership of Council's Manager Corporate Services Migelle Hiscock to complete the project.

This included restoration of the former guide and band halls, provision of toilets designed to match the guide hall, installation of a free public barbecue and shelter, paving through the park linking the two halls, general landscaping, solar lighting, and seating

Mrs Hiscock has paid tribute to the efforts of the working party for achieving what she has described as an outstanding result

– Tim Butt, Graeme Stephenson, Cliff Morris, Pete Mills, Richard Henderson-Wilson, Noel Modystach and Ann Ryan.

“I must also commend Council's landscaping team in general, particularly Kane Boss, and contractor Chris Fewster and his team from See Us Maintenance – all put in a special commitment.

“Council looks forward to the park becoming well used over the years, whether for a family Sunday afternoon barbecue, a weekday lunch break for workers in the area, or a stopover for visitors.

“It is a significant historical area. Until the arrival of the first pipeline in 1944, water was a very precious commodity, with an early allotment map showing 66 blocks for housing, a hotel and stores.

“Something that is not often realised is that adjoining this land was an area equal in size used as a water conservation reserve to collect and store water in the very tank that has been restored,” Mrs Hiscock explained.



# COUNCIL CONTACTS

## ADMINISTRATION

Civic Building:  
Darling Terrace (PO Box 126)  
Whyalla, SA, 5600.  
**Phone:** 08 8640 3444.  
**Fax:** 08 8645 0155.  
**Hours:** Weekdays 9am-5pm.  
Closed public holidays.  
**E-mail:**  
council@whyalla.sa.gov.au  
**Council web site:**  
www.whyalla.sa.gov.au  
**Whyalla web site:**  
www.whyalla.com  
(With special emphasis on visitor attractions and the "What's On" calendar of events).

**Australian Snapper  
Championship web site:**  
www.australiansnapper.com.au  
**Chief Executive Officer**  
Currently Migelle Hiscock (Acting)  
As of August 2, Ian Burfitt  
**Corporate Services**  
Group Manager, Migelle Hiscock.  
**Development Services**  
Group Manager, Stewart Payne.

## OPERATIONS

**Child Care Centre**  
Nicolson Ave – Ph: 8645 4030.  
Weekdays: 7.45am-5.45pm.  
Morning session: 7.45am-1pm.  
Afternoon session: 1pm-5.45pm.  
Daily session: 7.45am-5.45pm.  
Hourly: Three hours maximum.

**Alex Ramsay Library**  
Ramsay St – Ph: 8649 3000.  
Monday: Closed.  
Tuesday: 10am-5pm.  
Wednesday: 10am-8pm.  
Thursday: 10am-5pm.  
Friday: 10am-2pm.  
Saturday: Closed.  
Sunday: 2pm-5pm.

**Civic Library**  
Patterson St – Ph: 8645 7891.  
Monday: Closed.  
Tuesday: 10am-5pm.  
Wednesday: 10am-2pm.  
Thursday: 10am-7pm.  
Friday: 10am-5pm.  
Saturday: 9am-1pm.  
Sunday: Closed.

**Community Info Service**  
Civic Library – Ph: 8645 1955.  
Same hours as library.

**Mount Laura Waste and  
Recycling Depot**  
Iron Knob Rd – Ph: 8645 5016.  
Enquiries, sales, landfill, etc.  
Weekdays: 8.30am-4.30pm.  
Weekends and public holidays:  
10am-4pm.  
Closed: Good Friday, Christmas  
Day, Boxing Day, New Year's Day.

**AFTER HOURS  
EMERGENCIES**  
Normal Council number  
Ph: 8640 3444.

**COUNCIL MEETINGS**  
Are held at 5.30pm in the  
Council Chamber, Darling Tce,  
on the third Monday of each  
month, except January (usually  
fourth Monday) and December  
(usually second Monday.) If a  
date falls on a public holiday,  
the meeting is held Tuesday.  
July 19  
August 16  
September 20

## SEEC

**(Sustainable Environment  
Education Centre)**  
Iron Knob Rd – Ph: 8640 3441.  
Part of waste and recycling  
depot. Featuring displays,  
information and catering for group  
educational visits. Appointments  
by arrangement.

**Visitor Centre and  
Maritime Museum**  
Port Augusta Rd.  
**Ph:** 8645 7900, or 1800 088 589.  
**Fax:** 8645 3620.  
**Email:**  
visitor.centre@whyalla.sa.gov.au  
**Visitor Centre**  
Weekdays: 9am-5pm.  
Weekend and public holidays:  
9.30am-4pm.

**Maritime Museum**  
Seven days: 10am-4pm.  
Guided ship tours, Nov-March:  
10am, 11am, Noon, 1pm & 2pm.  
Guided ship tours, April-October:  
11am, Noon, 1pm, 2pm & 3pm.

**Stray Dog Kennels**  
Cnr Cook and Watts Streets, next  
to RSPCA – Ph: 8640 3444.  
Open to claim dogs between 3pm  
and 4pm weekdays.

## Rate, dog registration & expiation payments:

In addition to the Council office at  
which all the above can be paid,  
for the convenience of residents  
payments may also be made at:  
**Australia Post:** Over the counter,  
phone and internet rate payments  
(excluding dog and expiation  
payments).  
**Services SA:** (Nicolson Ave, cnr  
Ekblom St). Over the counter rate,  
dog, expiation payments.  
**Rates** can be paid via Council's  
website, BPAY, or by cheque.  
For details of the various options,  
phone Council on 8640 3444.

## ELECTED MEMBERS

**Mayor:**  
Jim Pollock: 0403 026 392

**Councillors:**  
Colin Carter: 8645 2444 (hm)  
Natasha Free: 8644 2584 (hm)  
Merton Hodge: 8645 9458 (hm)  
Eddie Hughes: 8645 9233 (hm)  
0447 745 471  
Bruce Ledo: 8644 0722 (hm)  
0429 863 088  
Ruby McGinniss: 8645 1735 (hm)  
Rick Santucci: 8640 4668 (hm)  
Jack Velthuisen: 0418 892 336  
Joanne Waters: 8645 1618 (hm)  
0448 860 112

## WINTER 2010 PUBLICATION DETAILS

Whyalla Council  
News (WCN) is  
published quarterly:  
Summer, autumn, winter and spring by  
and for the Whyalla City Council.

**Editorial and design**  
Media & Communications Department,  
Whyalla City Council.

**Phill Stone:**  
Media & Communications Manager.

**Rebecca Lichtenberger:**  
Media & Communications Officer.

**Paper stock**  
Printed on Australian made 70gsm  
Accord, from renewable plantations and  
recycled newsprint.

**Distribution**  
10,600 copies:  
• Delivered to household letterboxes in  
Whyalla.  
• Bulk supplies located at Council office,  
Alex Ramsay and Civic Libraries, and  
Whyalla Visitor Centre; and  
• Mailed to Government and business  
leaders outside Whyalla.



# A word from Mayor Jim Pollock

## Council election in November

NOVEMBER may seem a long  
way off – after all it is, by more  
than four months.

However, if your life is as busy  
as mine, before we know  
where we are November will  
be fast approaching and local  
government elections will be  
upon us, not forgetting Federal  
elections before then.

The SA Local Government  
Association is spearheading  
possibly the biggest awareness  
campaign ever to ensure that  
everyone throughout the State  
who is entitled to vote actually  
exercises their right.

We at Whyalla Council fully

support this initiative and will be  
undertaking supportive programs  
to get the message across as to  
the importance of elections for the  
city's next Council.

You will find more information in  
this edition of "Whyalla Council  
News."

The first thing you need to do is  
ensure you are on the roll, and this  
must be done by Friday, August 13  
– and that's barely seven weeks  
away.

I urge you to read the elections  
story, take note of the key dates  
to enrol, nominate and ultimately  
vote, and make sure your vote  
counts by having a say.



The Council you elect in  
November will preside over the  
city for the following four years.  
There has already been publicity  
in the local media and I am sure  
you will read, see and hear much  
more in the coming months.

## Congratulations due to efforts of staff for city

THE operation of any local  
government is often like walking  
on a tightrope – at times a very  
difficult balancing act – and this is  
no different in Whyalla.

In preparing its annual budget,  
Council takes into account a  
huge range of essential services,  
desirable development to  
enhance our environment and  
a whole matter of community  
focused projects to progress the  
city's wellbeing.

It is always difficult pleasing  
everyone at the same time  
because, as individuals, we all  
have differing views of priorities  
and which project is more  
important than the other.

However, one aspect I have  
always been passionate about  
and that is the dedication of  
Council staff, who all live in this  
community and who are equally  
passionate about providing  
the best possible service and

outcomes for the city and its  
residents.

Two particular events that I would  
like to take the opportunity to  
congratulate involve our Whyalla  
Visitor Centre and Council's  
legislation compliance team.

The visitor centre, under Jenny  
Barnes and her team, recently  
organised the annual and highly  
successful SA accredited Visitor  
Information Centres conference,  
which sent away around 60  
representatives of State centres as  
genuine and excited ambassadors  
to share their experiences  
amongst the tourist industry.

You may have already read in  
the "Whyalla News" about the  
legislation compliance team  
winning awards for animal  
management and compliance and  
community safety.

Unfortunately, many people only  
think of this area of Council,

and probably not endearingly,  
when they may have received an  
expiation notice. But the team  
lead by Senior Compliance  
Officers Ronald Versteegh and  
Steve Woolley do a significant  
amount of work "educating,  
not expiating" and the awards  
recognise these efforts.

## Commitment to communication

COUNCIL is genuinely committed  
to continually improving its  
communication with residents.

This edition of "Whyalla Council  
News" is the 20th issue in its  
tabloid newspaper format and I  
trust you agree with me that it is a  
valuable source of information for  
all residents.

I encourage all residents to take  
an interest in your Council and  
keep reading our publication.

Mayor Jim Pollock

# Mt Laura Waste & Recycling Facility

## FEES & CHARGES - 'Sort more, pay less!'

### General fees

Car boot \$4-\$8  
Station wagon \$8-\$15  
Dual cab ute, van, single axle trailer up to 8x5 \$20-\$30  
Tray top ute (one tonner), dual axle trailer \$30-\$50  
Tree prunings Half price  
Green organics for composting FREE  
(Lawn clippings, etc, non commercial loads only)  
Separated steel or recyclables FREE  
Tyres: Car \$5, 4WD \$8, truck \$20, super single \$30,  
larger POA (Double price if still on rim)  
Mattresses, lounge chairs, single/double \$6-\$10  
Gas bottles (up to 9kg) \$4 each

### Commercial fees

Any load minimum, or weigh only \$10  
Mixed inert waste (plus EPA Levy) \$60.2 tonne  
Mixed clean fill, rocks or inert waste and organics \$75 tonne  
(Plus EPA Levy) (Loads require major separation)  
Steel (Separated loads only, whole cars, no tyres) FREE  
Clean fill (No organic material, all under 100mm) FREE  
Rough fill \$20 tonne  
(No organic material, some rock 100-450mm)  
Top soil with grasses \$20 tonne  
(Light organic material no weeds)  
Green organics for composting \$5 tonne  
(Any separated compostables, no contamination)  
Tree prunings \$23 tonne  
(Trees, sticks & branches under 200mm diam)  
Tree stumps & logs (Over 200 mm diam) \$50 tonne  
Construction timber & pallets \$35 tonne  
(No CCA treated timber)  
Concrete & rock, 100-450mm \$14 tonne  
(Clean, no other materials)  
Concrete & rock, 450mm & over \$20 tonne  
(Clean, no other materials)

Asbestos – min \$25 for 200kg \$125 tonne  
(Dampened, covered and sealed in plastic)  
Liquid waste \$48 tonne  
(Organic waste derived from grease traps, etc)  
Special disposal – quarantine waste POA  
Account fee \$30  
(Minimum monthly charge if a/c used that month)  
Light Load \$30 M<sup>3</sup>  
(Any large load that weighs less than 1 tonne)

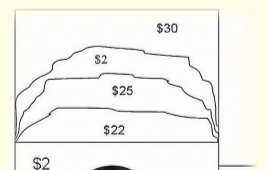
### PLEASE NOTE:

All categories must be clean and contaminant free.  
Cross contaminated loads will be charged at the mixed waste fee.

### How Landfill operator will assess your load

#### Full cage load \$30

Any amount in between  
rounded to the nearest  
dollar at landfill operations  
discretion.



#### Water level load \$20

If your trailer is loaded in such a way that recyclable products can  
be easily separated and segregated by you, then the gate fee will  
be substantially discounted.

### Landscape supplies for sale

Timber chips \$18 m3  
Timber chips – coloured \$40 m3  
Mulch \$24 m3  
Mulch – cottage \$40 m3  
Screened compost (200m screen) \$50 tonne  
Crushed concrete & rubble (20-30mm) \$12 tonne  
Bulk Sales (see gate attendant)



# Highly successful SA tourism conference

MORE than 60 representatives from accredited Visitor Information Centres throughout SA were in Whyalla last month for their annual three-day conference.

They left not only better equipped to ensure their individual centres benefitted from their attendance, but as enthusiastic ambassadors for what Whyalla has to offer holidaymakers.

Speakers included:

- SA Tourism Commission's Executive General Manager, Marketing and Sales, Steve Kernaghan.
- SATC Destination Development Manager, Debra Pietsch.
- Chief Executive of the SA Tourism Industry Council, Ward Tilbrook.
- Director of Visitor Management for the SA Department for Environment and Heritage, Anne Sellar.
- Head of Tourism at Flinders University and winner of the 2009 SA Tourism Award for outstanding contribution by an individual, Professor Jane James.

The program also comprised case studies, regional and working party overviews, team-building exercises and opportunities for delegates to learn and share information on both a one-to-one basis and in group situations.

Special tours covered the Whyalla Steelworks, Iron Knob town and mine, and Whyalla Maritime Museum during which delegates learnt some of the background and operational aspects of the various attractions.



A highlight was a themed dinner at the Whyalla Golf Club at which the Whyalla Players performed their latest theatre restaurant production "Desperados" to a standing ovation.

Delegates represented Adelaide, Adelaide Hills, Barmera, Barossa, Beachport, Berri, Bordertown, Burra, Ceduna, Clare Valley, Coober Pedy, Kadina, Elliston, Gawler, Glenelg, Goolwa, Hawker, Kangaroo Island, Kapunda, Loxton, Mannum, McLaren Vale, Millicent, Mount Gambier, Mount Lofty Summit, Murray Bridge, Naracoorte, Penola-Coonawarra, Port Adelaide, Port Augusta, Port Lincoln, Port Pirie, Quorn, Renmark Paringa, Robe, Roxby, Strathalbyn, Victor Harbour, Waikerie, Whyalla, Wilpena Pound, Woomera, Yankalilla, and Yorke Peninsula.



THE thought of diving with Whyalla's famous cuttlefish was too good to resist for many of the conference delegates who took the opportunity of a special pre-conference dive, thanks to Tony Bramley, of Whyalla Diving Services, and an enthusiastic band of helpers. Although the weather was cold and windy, and only a handful of cuttlefish were located, the group enjoyed the experience.

PICTURED TOP: The group at Point Lowly. LEFT: Brenten Kahl, of Naracoorte Visitor Information Centre (left) and Steve Kernaghan, SA Tourism Commission's Executive General Manager, Marketing and Sales.

The conference was hosted and organised by the Whyalla Visitor Centre, with Whyalla Council a Diamond sponsor.

## New CEO set to bring 30 years experience to Whyalla

WHYALLA Council's new Chief Executive Officer, Ian Burfitt, will take up his position on August 2 in the next chapter of an extensive history associated with local government in SA.

Although Whyalla is a long way from his current role as CEO of Palmerston City Council in the NT, Mr Burfitt has had a significant local government career on Eyre Peninsula and in the Mid North, which started around 30 years ago.

Prior to moving to Palmerston, Mr Burfitt was CEO of Port Pirie Regional Council where he was given a standing ovation from elected members and public representatives at his last Council meeting there in December 2007.

Mr Burfitt's Port Pirie posting followed a lengthy tenure as CEO of Port Lincoln Council. He has also worked at other Eyre Peninsula and Mid-North Council's, having attained his first CEO position at the age of 21 years.

Whyalla Mayor Jim Pollock said Mr Burfitt was highly regarded in the local government sector with a track record of developing

council finances and ensuring they maintained sustainability.

"This will be a crucial aspect of his role in Whyalla as we embark upon some exceptionally challenging years ahead of us," Mr Pollock said.



"Ian maintains a high level of professionalism. Having worked with him previously on various boards, I look forward to continuing this relationship in achieving Whyalla Council's goals.

"His broad background in local government and business development, sales management and marketing will be invaluable in his new role.

"Ian loves fishing and water sports so will fit in well with what Whyalla has to offer," Mr Pollock said.

### About Palmerston

Palmerston is 21km south of Darwin, was developed in the 1980s, has been one of Australia's fastest growing areas and was declared a city in August, 2000.

With an average age of 28, Palmerston's population of 25,000 is primarily made up of families, and around 30 percent are under 15 years of age.

The city centre has two major shopping complexes, various sporting clubs, restaurants, pubs, skatepark, cinema and smaller shops.

The city itself has 10 suburbs and although mainly residential, also has two light industrial areas.

Recreationally, Palmerston has a wide range of sporting groups, a baseball and football complex, aquatic and leisure centre, a new multipurpose recreation centre, and more than 100 parks – many with playgrounds and barbecues.

## ARE YOU USING WHYALLA COUNCIL'S Kerbside Hard Waste Collection Service?

Free removal of:

White goods (fridges, freezers, washing machines, heaters, dryers, etc).

Household furniture & goods.

Household fixtures.

(kitchen cupboards, window frames, etc).

Fencing materials (rolls of wire, iron sheeting, etc).

Other items (bicycles, lawn mowers, garden equipment, tools, garden pots, etc).

Textiles, wood off cuts, car batteries, carpet and more.

Contact Council for further information or check the website: [www.whyalla.sa.gov.au](http://www.whyalla.sa.gov.au).

Find out which collection area you are in, the date of your next collection, and then book a pickup to get rid of that junk which keeps piling up!

Simply phone the Whyalla Council switchboard on 8640 3444.

Remember, you are entitled to two free collections per year, so take advantage of the offer and phone now.

**DON'T FORGET-IT'S FREE!**



# First free electronic waste collection an outstanding success

From **GAIL ROSTIG**  
Waste Education Officer

TUESDAY, March 30, 2010 started out like any other day. It was a pleasant autumn morning – the sun was shining, the birds were singing and there was a positive feeling in the air.

Then at the stroke of 7.30am “bedlam” started and continued all day as Whyalla’s residents flowed through the gates of the former Council depot in Ayliffe Street with their cars, boots and trailers full of old electronic goods.

It was the first e-waste collection day held by Council to help residents dispose of this 21st Century waste, which can no longer go to the Whyalla landfill site.

Within the first two hours the huge collection bins were overflowing

and alternate storage had to be found. Fortunately, the unused sheds at the site could be used for temporary storage until more bins were sourced.

On board for the day were wonderful workers from Phoenix, and two council staff – Craig Pedler and myself – and we did not stop. Our manual handling skills were tested to the fullest and everyone slept well that night!

And the results:

- 400 cars came through the gate.
- A car was served every 70 seconds.
- On average, each person brought in five items.
- A total of 20.5 tonnes of e-waste was collected, which equated to 136 cubic metres or the same as filling 16 tandem tipper loads.

It is expected that electronic waste will be banned from all SA landfill



in the near future, which will cause a range of problems for disposal. E-waste is not cheap to recycle and in Whyalla we also have a distance issue involving additional costs.

Council’s waste management department is looking at ways to deal with this issue in future, but until a solution is found residents are encouraged to store their e-waste in their sheds until further collections or announcements are made.

All e-waste collected on the day has now been sent to E-Cycle Recovery in Adelaide to be totally recycled.

**Pictured: Just some of the E-Waste collected**



## Crackdown on illegal parking

WHYALLA Council’s legislation compliance team is concerned at a growing trend of vehicles parked illegally on footpaths, nature strips and medians throughout the city.

Under the Australian Road Rules, drivers face penalties of between \$42 and \$56.

These rules provide that, generally, parking is not permitted between any kerb and the adjacent property boundary regardless of a formed footpath being established on that land.

If no kerb exists in a built up area, parking between the sealed carriageway and any adjacent property boundary may be restricted and motorists should check for any restrictions before parking.

A Council Senior Legislation Compliance Officer Ronald Versteegh, said illegally parking on footpaths, nature strips and medians posed hazards for other

motorists and prevented legitimate use of the area by pedestrians including those with baby strollers, on mobility scooters and Australia Post delivery staff.

“We will continue to monitor all

parking controls and take action as appropriate,” Mr Versteegh said.

He has appealed to motorists to be aware of the road rules to ensure they do not receive an unnecessary penalty.

## Warning to drivers who park on wrong side of road, wrong way

A DRAMATIC increase in the number of vehicles parked on the wrong side of streets facing on-coming traffic is also to become a focus of Council’s legislative compliance team.

This practice poses hazards to other traffic, and thereby motorists, as offending vehicles must travel on the incorrect side of the road to get to such a parked position. Drivers then repeat the offence to move back onto the correct side of the road.

When a vehicle is illegally parked on the wrong side of the road there is a potential for other

drivers, depending on the time of day and weather conditions, to momentarily think they may be on the incorrect side themselves, causing unnecessary evasive action.

To avoid being issued with an expiation notice carrying a \$34 fee, drivers are reminded to ensure they park legally.

**Further information about parking regulations or general advice is available from Council’s Legislation Compliance Team Phone 8640 3444.**

## WHYALLA COUNCIL NOTICE Development fees now paid at time of lodgement

From April this year, Whyalla Council changed the way in which application fees are paid. All development fees must now be paid at the time of lodgement, as required by the Development Regulations. Should any extra fees (see note below) be necessary for an application to proceed, applicants will be advised in writing and the application will be placed on hold until the required fee is paid.

The following guide covers the lodgement, planning and building fees, and outlines how the fees are calculated, so as to assist applicants to determine appropriate fees prior to lodgement.

Should you have any queries please contact Council’s Development Services department, phone 8640 3444.

### LODGE MENT FEES

|  |              |          |
|--|--------------|----------|
| Estimated development cost up to and including | \$5,000      | \$ 52.00 |
|  | Over \$5,000 | \$111.50 |

### PLANNING FEES

|   |                      |                            |
|---|----------------------|----------------------------|
| Standard Fees                                 |                      |                            |
| Estimated development cost \$10,000 and under |                      | \$ 32.50                   |
|   | \$10,001 - \$100,000 | \$ 89.50                   |
|   | Over \$100,000       | 0.125% of development cost |

### Where applicable:

|                                |          |
|--------------------------------|----------|
| Residential Code complying fee | \$ 43.50 |
| Planning consent – staged fee  | \$ 52.00 |
| Notification                   | \$ 89.50 |

### BUILDING FEES

Sheds, garages, carports, verandahs; swimming pools; decking; Fences/retaining walls (length x 3).

- Up to and including 75 m<sup>2</sup> – \$55.50. Over 75m<sup>2</sup> – 73c per square metre.

New dwellings; extension/alterations; rumpus/games rooms; Bathroom upgrades; internal alterations; removal of wall (length x 3).

- Up to and including 22 m<sup>2</sup> - \$55.50. Over 22 m<sup>2</sup> – \$2.45 per square metre.

### New offices/shops.

- Up to and including 17 m<sup>2</sup> – \$55.50. Over 17m<sup>2</sup> – \$3.26 per square metre.

### Workshop/commercial storage.

- Up to and including 26 m<sup>2</sup> – \$55.50. Over 26 m<sup>2</sup> – \$2.16 per square metre.

### Health/aged care.

- Up to and including 15 m<sup>2</sup> – \$55.50. Over 15 m<sup>2</sup> – \$3.70 per square metre.

### Assembly buildings (churches/theatres).

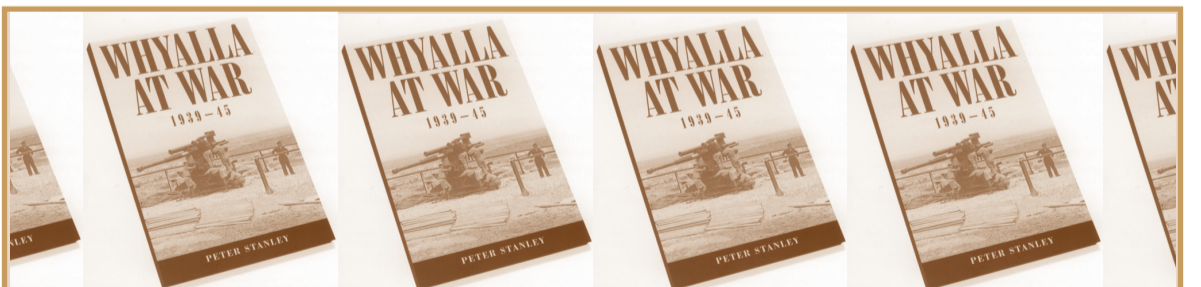
- Up to and including 17 m<sup>2</sup> – \$55.50. Over 17 m<sup>2</sup> – \$3.25 per square metre

### TV antennae, water tanks etc.

- \$55.50

**Note:** Other fees may be applicable where application involves advertising, referral to a Government Agency or non-complying development, etc.

**Please note that above fees are correct as at July 1, 2010.**



## Huge 25% off stocktake sale!

More than 60 years on the full story is now told. An important account of Whyalla’s history. A must for every bookshelf in an easy-to-read style.

## “Whyalla At War 1939-45”

**Only \$15.**

**But wait, there’s more!**

Buy a second copy for a friend at the same time and we’ll pack and post it to them FREE. Simply call into Whyalla Vistor Centre or Whyalla Council for this low price.

**OFFER VALID TILL JULY 31, 2010**





# Milestone in communication by 'WCN'

THIS winter edition of *Whyalla Council News* achieves a milestone as the 20th issue published in a quarterly tabloid newspaper format.

It represents an estimated 300,000 written words in those 20 editions, plus other special editions, all aimed at communicating Whyalla Council's services and general activities to residents, according to Media and Communications Manager Phill Stone.

"Community feedback has continued to grow since changing to a newspaper style with residents quick to let us know if they do not receive a letter-boxed copy.

"The role of *Whyalla Council News*, otherwise known as *WCN*, is not to replace other forms of local and regional media, but to complement them by being able

to provide fuller details of news stories, while allowing for the promotion of all types of Council services and general information," Mr Stone said.

"We try to ensure every edition contains a broad cross-section of Council news and updates in an attractive and readable style.

"I very much encourage residents to make sure they read their copy when it arrives," Mr Stone said.

"WCN is an important channel for Council to communicate directly with its residents.

"I believe anyone with a genuine interest about Council's activities and services owes it to themselves to keep abreast of Council news. Reading each edition of *WCN* is one way in which residents can maintain an exceptionally useful awareness of current information," Mr Stone said.

Under the name of *Whyalla City Council News*, the first edition was published in October 1996 as a 16-page, black and white, "quarter fold" newsletter smaller than A4.

Its size varied from 12 to 16 pages, spot colour was introduced, and later some full colour photos. Publication dates also varied subject to other workloads.

In September 2005, with Council recognising the importance for continually improving communication with residents, the publication was totally re-vamped to an alternating 12 or 16-page tabloid newspaper style, which offered a mixture of full and spot colour.

This change also saw a mailing list developed covering politicians and business leaders outside Whyalla.

A set schedule was determined to produce four editions each

year in autumn, winter, spring and summer.

The first, full colour, 16-pager started a new chapter in the history of *Whyalla Council News* in September 2008.

Council's Media and Communications team looks forward to the future with a publication that continues to evolve and provide residents with the best possible information.

## If you do not receive a copy, why not?

THE main method of delivering *Whyalla Council News* to residents is through the services of a local direct-mail business to Whyalla household letterboxes.

Therefore, it is likely to arrive with an array of other publications.

Unfortunately, this means that if residents do not have a physical letterbox, which is also not serviced by Australia Post, copies will not be delivered.

In an endeavour to ensure every resident has access to the publication:

- Firstly, it is available on both the Council and whyalla.com websites.
- Secondly, if a resident does not have a physical delivery service to a household letterbox and relies on a private post office box, a copy will be posed to them.

Residents in this situation simply need only to advise Council of their name and address.

Residents living in the Eight Mile creek area and some at Point Lowly already receive a copy through their post office box.

The same offer applies to residents in new housing developments that are yet to be serviced by either Australia Post or direct-mail companies.

"Simply contact Council and we will put these residents on our mailing list," Media and Communications Manager Phill Stone said.

"There is no excuse whatsoever why any Whyalla resident should not receive a copy of *Whyalla Council News*.

## Free information reports still available

RESIDENTS are reminded that copies of Whyalla Council's 2008/2009 annual report and the Whyalla Community Plan: Whyalla Towards 2022 Vision are still freely available from the Council office at Civic Building.

Both documents are also accessible on Council's website: [whyalla.sa.gov.au](http://whyalla.sa.gov.au).

The annual report is produced as part of mandatory reporting with an aim not to just comply with legislative requirements, but presented as an easily readable and informative document.

It provides a good snapshot of Council's previous year and plans for the current financial year. The 2009/2010 report is expected to be released in November following Council's annual financial audit.

The community plan was finalised last year following an extensive community consultation process and forms a blueprint for the future. Copies are also available free of charge at Alex Ramsay and Civic Libraries.



**TELL US WHAT YOU THINK!**

Does *Whyalla Council News (WCN)* provide news, information and contact details of interest to you?

If not, please tell us what you don't like and how we can improve this publication.

Are there specific topics you would like covered?

If you have any suggestions, we'd like to hear them!

On the other hand, if you are happy with the current range of topics, please also let us know so that we in turn know we're on the right track.

Simply send your comments whether they are brief points or detailed outlines:

E-mail: [phillip.stone@whyalla.sa.gov.au](mailto:phillip.stone@whyalla.sa.gov.au),  
 Fax: 8644 2355, or  
 Post: Whyalla Council, PO Box 126, Whyalla, 5600.

**COUNCIL ON THE AIRWAVES!**

**'What's On' - 5AU 1242**

Listen to 5AU every Thursday morning around 8.15am to find out what's happening in Whyalla.

How much information can Whyalla Council's Media and Communications Manager Phill Stone cram into around eight minutes? Listen and find out! Learn more about Whyalla, what's coming up and maybe have a laugh along the way.

**The Council Show - 5YYY 107.7 FM**

Listen to 5YYY every Tuesday between 11.30am and Noon when a variety of Council officers and staff present a whole range of issues and information.

Every show is different and over the weeks they will cover a wealth of information from most areas of Council – its activities, projects and services. Just part of Council's regular and on-going communication with Whyalla residents.



## DISABLED PARKING PERMITS

# Reading this story could save your hip pocket \$245 cash

MOTORISTS who illegally park in zones specifically marked as *disabled parking only* risk a \$245 expiation fee and are being encouraged to “do the right thing.”

At the same time, Whyalla Council is reminding holders entitled to a disabled parking permit, to ensure they are clearly displayed, aren't faded, and don't blow off the vehicle's dashboard.

Council's legislation compliance team regularly inspect designated disabled parking sites and will issue expiation notices if a vehicle is found parked in a disabled area and is not displaying an appropriate permit.

Council is increasingly concerned that in many instances the driver



of an “offending” vehicle is actually in possession of a permit, but has either failed to display it or has it hidden amongst other material in the car, behind tinted windscreen bands or on the centre console of the car.

Residents who hold a current disabled parking permit and use designated disabled parking sites are asked to ensure that the permit is clearly displayed on the dashboard of the car as required, to avoid any confusion or angst.

To prevent the permit from fading or curling in the sun, many users house the permit in a registration label holder available

from Services SA, motoring outlets or discount variety stores. These have the added advantage of ensuring the permit is not disturbed as the occupants enter or leave the vehicle and its increased bulk ensures it is not misplaced. Others choose to laminate the permit in a UV resistant pouch available at most stationers and newsagents.

“We are committed to ensuring these parking sites are used only by those entitled to them, and we appreciate the co-operation of the majority of permit holders,” according to Senior Legislation Compliance Officer, Steve Woolley.

“We will then be able to direct our resources to only those who illegally park in disabled sites.”

Council is committed to the fair and equitable use of on and off street parking and has entered into agreements with owners of several private car parks to ensure compliance with the provisions of the Private Parking Areas Act as it relates to each site.

Numerous *disabled parking only* areas have been established and are readily distinguished by the international standard blue and white symbol of a wheelchair on an overhead sign and/or the same symbol painted in yellow in the parking space.

The Australian Road Rules provide that it is an offence for a driver to park a vehicle in a designated disabled parking area without displaying an appropriate permit which also carries the wheelchair symbol.

**Information on obtaining a disabled parking permit, including temporary permits, may be obtained from Services SA, Nicolson Ave or your doctor. Whyalla Council does not issue, replace or renew these permits.**



## Found: One pair size 9 stilettos in beach clean-up... owner unknown!

DESPITE the annual Clean Up Australia Day in March being held on a long-weekend and experiencing inclement weather, more than 160 volunteers still turned out to help improve the Whyalla environment.

Co-ordinator of the Whyalla Council-sponsored community site, Gail Rostig, said that organisers missed out on seeing a lot of regular “clean up families” because of the long weekend, but this could not be avoided because of the national date.

Nevertheless, Whyalla's contribution was successful with around five cubic metres of rubbish cleaned up from the Whyalla Foreshore area.

“We focused on the foreshore due to the completion of the first stage of the redevelopment and were very pleased that it was not as bad as previous years,” Ms Rostig said.

“Hopefully, this reflects pride within the community for the facility now being provided for their enjoyment.

“Volunteers cleaned up along the foreshore right up to Hummock Hill, including the sand dunes and mangrove area, and Ada Ryan Gardens.

“The most amusing find was a pair of size 9 stilettos, along with an assortment of other clothing including swimming shorts and thongs,” Ms Rostig said.

Unfortunately the most common items were, again, fast food packaging, cigarette butts and various plastics.

Most schools in Whyalla took part at some stage in the clean up program, showing a commitment to caring for their environment. Community groups also targeted trouble spots for illegal dumping. “Whyalla divers cleaned up the swimming enclosure in the marina as they have done for the past two years where they found a wheelie bin lurking at

the bottom, and lots of glass and cans. A big thank-you to this group for all their help,” Ms Rostig said.

“Families made a day of it enjoying the free sausage sizzle cooked by our wonderful Whyalla Apex Cub, and took advantage of the location by spending time on the playground and in the gardens.”

*PICTURED: Above from left, Hayden Walsh-Smith, Holly Walsh-Smith and Corey Gibbons get ready to “do their bit.” Below from left, Sue Hurlle, Sharmane Whittaker, Shannon Skorup and Mathew Skorup-Meakin take a moment's break.*



## SPECIAL MESSAGE TO PARENTS!

If your child is turning 4 years soon, or is already 4 years and has not yet received their 4-year-old vaccinations, please contact Council on 8640 3444 to make an appointment at a free childhood immunisation clinic.

It is important that your child's immunisations are up to date as they prepare for kindergarten and primary school.

Receiving recommended booster vaccines means your child can attend with maximum protection against serious infectious diseases.

**More details on page 14**

## Compliance team leading the way in SA



WHYALLA Council has been recognised for its work in animal management, and compliance and community safety.

Its legislation compliance team recently took out two awards at the SA Local Government Authorised Persons Association conference.

The awards were based on good practice and animal management, and as Animal Management Team of the Year, Council will now be nominated in national awards.

The communication award recognises efforts of Council to build a rapport with the community. Initiatives included information displays at Westland Shopping Centre and programs educating the public on fines and how to avoid them, along with animal related issues.

The 2010 awards were the first won by a regional council competing against better resourced metropolitan councils.

They acknowledge and reflect the efforts of Council's legislative team – Senior Compliance Officers Ronald Versteegh and Steve Woolley, and Rachel Coles and Katrina Popplewell.

However, Mr Woolley was quick to point out that the result was also only made possible by all staff who worked with the compliance team liaising with the community.

*PICTURED FLASHBACK 2009: “Educate not expiate” was the message of an awareness campaign last year involving all compliance sections of Council, with special visitor Super Scooper who joined the team to promote responsible pet ownership.*



# Warning as invasive thorny pest plants reach Whyalla

TWO thorny plants, previously unknown in Whyalla, have been discovered growing in local home gardens.

Although the names will mean little to residents, they are mesquite and parkinsonia.

Specimens have been found at Port Augusta over the years, but this is the first time plants have been recorded in Whyalla.

Mesquite and parkinsonia are classed as weeds of national significance (WONS) meaning that they are recognised as extremely invasive species.

Both have the potential to take over and significantly reduce the biodiversity of the fragile environment that surrounds Whyalla.

The plants can form impenetrable thickets that not only injure and block native wildlife and stock from water points, but also provide shelter for pest animals such as foxes and rabbits. They strip nutrients from fragile soils,



Nick Wilson - EP Natural Resources Management Board

preventing the regeneration of native plants that are the sole source of food for stock on station land.

Mesquite originated from south western USA and the northern part of Mexico and can survive in areas with annual rainfall of 200mm to 1200mm. It is an untidy looking

tree and has fern-like leaves that can often lead to the plant being wrongly identified.

Mesquite has an extremely large tap root with the deepest on record at 58 metres. It can survive for a long period of time and the Brisbane botanical garden has a 115-year-old specimen that is still growing.

Mesquite is characterised by its reddish stems that grow in a zigzag shape and extremely large thorns at the base of each of the leaves. The thorns grow large enough to puncture truck tyres. Mesquite flowers can look similar to that of native plants as they are cylindrical, quite long and bright yellow.

Meanwhile, parkinsonia is a shrub or small tree growing to four to eight metres in height, also with a zigzag shape structure on its branches. Young plants have hairless pale to dark green stems.

Parkinsonia sports thorns where the leaves extend from the stem. A distinguishing feature is the way



the leaves grow opposite each other along the stem. Its flowers are distinctive with four yellow petals and one erect orange or spotted orange petal.

Both mesquite and parkinsonia produce bean shaped seed pods that can be transported by animals and water or on vehicles and machinery.

Whyalla residents are encouraged to contact Nick Wilson at Eyre Peninsula Natural Resources Management Board on 8640 3481 for more information and to report potential sightings of these plants.



# Are you enrolled to vote in SA local govt elections?

SOUTH Australia goes to the polls for local government elections in November.

Mayor Jim Pollock is urging all Whyalla residents eligible to vote to ensure that they are enrolled and exercise what is an important democratic right to vote and "have a say."

"A growing amount of information and a range of enrolment forms are constantly being made available through the websites of both the Local Government Association of SA and Council itself," Mayor Pollock said.

"Similarly, various information sheets and brochures are being produced and available through Council's Customer Services Department within the Civic Building.

"The Local Government Association is spearheading a major awareness campaign to encourage everyone entitled to vote to ensure they are actually enrolled, and Whyalla Council is fully supportive of this initiative.

"If residents still have any questions they simply need only call into the Council office or phone on 8640 3444 and our

Customer Services staff will be only too happy to help them," Mayor Pollock said.

## Are you eligible to enrol to vote?

If you are already on the State Electoral Roll for the Whyalla City Council area to vote in State elections, you will automatically be included on the Council voters roll and receive ballot papers. Under these circumstances you do not have to enrol again.

If you are 17 years of age and enrolled as a provisional voter on the State Electoral Roll and turn 18 by close of voting, you are entitled to vote and will receive ballot papers.

If you have moved house or changed your name, you need to complete a new enrolment form available at your local post office or at [www.ecsa.sa.gov.au](http://www.ecsa.sa.gov.au)

Organisations, business owners or occupiers now need to nominate a designated person to vote on their behalf who is a natural person\*, of or above 18 years of age, but who is not listed to vote in any other capacity in the Whyalla Council area.

## You want to vote?

If you can answer "Yes" to any of the following you may be eligible to be on the voters roll:

- You have been resident at your current address for one month and are not on the State Electoral Roll.
- You are a sole owner/occupier of rateable property.
- You are NOT an Australian citizen, but you have been a resident at your current address for one month.
- You are a landlord for rateable property.
- You are an organisation or business owner, or occupier of rateable property.
- You are a group of owners or occupiers of rateable property.

## Changes to Whyalla Council voters roll

Recent changes to the Local Government (Elections) Act 1999 means that at January 1 of every election year, all landlords, business lessees and resident non-Australian citizens will be removed from the voters roll (with the exception of City of Adelaide) and **MUST** re-enrol to be able to vote.

If you are one of the above, you must enrol with Whyalla Council to receive ballot papers under these categories.

\* **Explanation:** Ever wondered who a "Natural Person" is in electoral roll terms? The official description is: *A human being in the ordinary sense, as opposed to artificial persons or entities such as companies which are recognised as legal persons under the law.*

## KEY DATES FOR 2010 COUNCIL ELECTIONS

|                              |                                       |
|------------------------------|---------------------------------------|
| Friday August 13:            | Voters roll closes.                   |
| Tuesday September 7:         | Candidate nominations open.           |
| Tuesday September 21 (Noon): | Candidate nominations close.          |
| Monday 25-Friday 29 October: | Ballot packs sent to enrolled voters. |
| Friday November 12 (5pm)     | Voting closes.                        |

## QUICK REFERENCE TO ENROL OR IF YOU NEED MORE INFORMATION

**If you are not on the general roll and need to enrol:**  
You must obtain an enrolment form at your local post office or via [www.ecsa.sa.gov.au](http://www.ecsa.sa.gov.au) and forward it to the Electoral Commission SA as per instructions on the form.

**If you are a landlord, business lessee or resident non-Australian:**  
You need to enrol by completing a separate enrolment form available from the Customer Services Department at Whyalla Council or via Council's website [www.whyalla.sa.gov.au](http://www.whyalla.sa.gov.au)

## FORESORE UPGRADE STAGE 1

MINOR additional works not included in the original contract scope (eg handrails along the existing seawall and seaside showers) are being completed by Council.

The original purpose of undertaking this work in-house was to enable considerable savings compared to cost estimates, but has taken longer than expected due to lack of staff resources caused by resignations and sickness.

Some maintenance issues covering paint delamination, concrete cracking and settlement of concrete paving, have been identified and being addressed by the contractor.



# 19th Australian Snapper Championship



## Facts, figures for the record!

THE second highest number of 824 anglers spent perfect weather chasing one of almost 140 prizes valued at more than \$55,000 covering snapper for the serious fisher and other species suitable for juniors on the recreational jetty. Everything is now set for the much awaited 20th anniversary event at Easter – April 22 to 24 – 2011. With anglers now used to entries closing one week before the championship, next year's target will be 1,000 competitors. Keep up to date with organisational progress via [www.australiansnapper.com.au](http://www.australiansnapper.com.au)

### Top 10 heaviest snapper

15.04kg, Raymond Curnow, Whyalla.  
 13.24kg, Frank Zarnatol, Hallett Cove.  
 12.82kg, Joe Richichi, Athelstone.  
 12.26kg, Joe Nicholson, Whyalla  
 11.74kg, Kelvin Rigden, Port Augusta.  
 11.45kg, Greg Roediger, Whyalla.  
 11.40kg, Ashley Talbot, Semaphore Pk.  
 11.32kg, David Cocks, Wynnvale.  
 11.22kg, Mark Otten, Victoria.  
 10.98kg, Mitchell Walsh, Woodcroft.

### Heaviest snapper caught by a junior:

10.98kg, Mitchell Walsh, Woodcroft.

### \$17,000 jet ski random draw:

Christine Cook, Port Lincoln, SA.

### Number of entries:

|               |            |              |
|---------------|------------|--------------|
|               | 2010       | (09)         |
| Adult male    | 576        | (693)        |
| Adult female  | 95         | (98)         |
| Junior male   | 106        | (116)        |
| Junior female | 49         | (36)         |
| <b>Total</b>  | <b>826</b> | <b>(943)</b> |

### Where entrants came from:

|               |            |              |
|---------------|------------|--------------|
| Whyalla       | 451        | (546)        |
| SA other      | 322        | (329)        |
| Victoria      | 31         | (51)         |
| NSW           | 11         | (7)          |
| Queensland    | 8          | (2)          |
| NT            | 1          | (3)          |
| WA            | 1          | (1)          |
| International | 1          | (-)          |
| Tasmania      | -          | (4)          |
| <b>Total</b>  | <b>826</b> | <b>(943)</b> |

### Heaviest snapper caught by a female:

9.86kg, Sarah Murray, Burra.

|          |             |             |
|----------|-------------|-------------|
|          | 2010        | 2009        |
| Whyalla  | 451 (54.6%) | 546 (57.9%) |
| Visitors | 375 (45.4%) | 397 (42.1%) |

### Number of boats:

|              |            |       |
|--------------|------------|-------|
|              | 2010       | (271) |
| <b>Total</b> | <b>243</b> |       |



## SNAPPER SOUVENIRS STOCKTAKE SPECIALS – 20% OFF

Check them out at the Whyalla Visitor Centre and get a real bargain!

**Adult shirts \$28 (were \$35) Children's shirts \$20 (were \$25)**

**Caps \$12 (were \$15) Beanies \$8 (were \$10)**

**Stubby holders \$6 (were \$8)**

**Magnificent unique boxed glass tankards \$12 (were \$15.)**

**PLUS SUPER SPECIAL ON VERY LARGE SHIRTS FROM 2009 – JUST \$10 EACH**



# 19th Australian Snapper Championship

**Winner of the 2010  
Whyalla Australian  
Snapper Championship  
Raymond  
Curnow**



## MAJOR PARTNERS



## DIAMOND SPONSOR



## GOLD SPONSORS



in association with



## SILVER SPONSORS

Whyalla Foreshore Motor Inn  
Shiell Party Hire



Sincerely thanking our  
sponsors of the



## PLATINUM SPONSORS





# Whyalla Council celebrates 40 years...

## City with a proud history, exciting future!

WHYALLA has established a proud history since the northern Spencer Gulf was first navigated by Matthew Flinders in 1802.

Hummock Hill was named and in the following year Frenchman Louise-Claude de Freycinet sailed the area.

Land explorer Edward John Eyre reported the presence of iron stone in the Middleback Ranges in 1840, and towards the latter half of the nineteenth century the area around Hummock Hill was settled by graziers.

However, it was the rich iron ore deposits, 50kms west, which were to have the greatest influence.

The first attempts to mine the area began in the 1890s. The Broken Hill Proprietary Company secured a lease on the deposits in 1896 so that it could have an assured supply of ironstone to use as a flux at the Port Pirie smelting plant which treated the silver, lead and zinc ores mined at Broken Hill.

A small work camp was established at the foot of Hummock Hill in 1901 as a service base for the first iron ore jetty construction and the building of the railway to Iron Knob.

Women and children began arriving at the Hummock Hill settlement from 1902, and for the next 60 years BHP was a major influence on the town's development.

The importance of Hummock Hill grew when the company decided to enter the steelmaking market and establish an iron and steel works in Australia.

From the first decade of the Twentieth Century the township gradually developed as a community, and in 1914 Hummock Hill was proclaimed the Town of Whyalla.

Until the 1930s Whyalla was not widely known even in South Australia, let alone interstate.

The first big boom came in 1937 when BHP announced plans to construct a blast furnace, wharf and harbour.

The second major development came with the outbreak of World War II. Because of Whyalla's strategic location, a shipyard was built and the first ship, HMAS Whyalla (now preserved and

restored at Whyalla Maritime Museum) was launched in 1941.

Many believed that the shipyard would close at the end of the war, but it maintained its fine reputation of quality shipbuilding until it eventually ceased operations in 1978.

The 1940s saw much growth and the establishment of many community facilities and services – the Whyalla Hospital, a new airport, hotels, banks, church and public schools, the water pipeline from Morgan on the River Murray, two open-air cinemas, Memorial Oval, and a wide range of social and sporting organisations with associated facilities.

### LOCAL GOVERNMENT CHAPTER 1: Town Commission formed

ON MAY 1, 1945, with Whyalla's population at more than 5,000, a Town Commission was established.

This performed a role similar to that of traditional local government, but with representatives from BHP and elected members of the community.

The first meeting was held on May 9 in the Anderson Building in Forsyth Street. The chairman, appointed by the State Government, was Charles Landers Ryan, and elected members comprised Ronald Redvers Loveday, Eric Thomas Stead and Terence Walsh. Members appointed by BHP were John McCombe Jackson, George Sampson Lewthwaite and Alec

Duncan Williams.

On October 19, 1961, Whyalla was proclaimed a city by the City of Whyalla Commission Act II (1961).

Mr Ryan remained chairman until 1970 when fully elected local government was introduced. In January that year Freedom of the City was bestowed upon Mr Ryan, who was honoured at a public farewell ceremony at the Whyalla Technical High School reserve. Three years earlier he had been made an OBE.

The years from 1945 to 1965 saw continued development, but the greatest expansion of Whyalla occurred when BHP built a steelworks. Plans were announced in 1958 and the official opening was held on May 6, 1965.

Growth of the town is reflected in the population figures of 8,500 in 1954, 22,100 in 1996, and 32,000 in 1971.



### Historical moments in time

ABOVE: The first fully-elected Whyalla City Council in 1970, more formally referred to as the Corporation of the City of Whyalla. From left, back, Donald Goldberg Jacquier, George Vlachoulis, Mervin Robert Knuckey, Donald Christopher Sarre, Maxwell John Brown. From left front, Colin Murray Norton, Vivienne Isabel Cruickshank, Mayor Keith Wilson and Aileen Christina Ekblom.

BELOW: Council's first Town Clerk, Mr John Alexander Laird Menard, right, chats with special visitors attending the first meeting of Council which was held on a Wednesday night – from left Mr E R Bowden, Mr R R Loveday and Mr M K S Bray.



## Just seven mayors in 40 years

WHYALLA has been served by seven mayors since a fully elected city council came into being in 1970.

Keith Wilson had the honour of being the first mayor after defeating Alan Moran in the inaugural election. He served for three years before stepping down due to family and business commitments.

Councillor Murray Norton filled the role for the next two years from 1973 to 1975. However, he too felt the pressure of civic duties and in 1975 decided family and business needed more of his time. While he resigned from the mayoralty, he did retain a seat on council.

Mr Norton was replaced by Aileen Ekblom, the city's only female mayor, and the longest serving. She held the position with passion for Whyalla until her retirement from Council in 1991.

Councillor and Deputy Mayor Russell Reid became the city's fourth mayor, a position he held

until 1994 when employment took him interstate.

They say history has a habit of repeating itself and that's what happened in 1994 when Keith Wilson took the post again to become the city's fifth mayor.

The 1997 election saw a police sergeant, John Smith, take on the mantle as Whyalla's sixth mayor for two terms.

In 2003, incumbent Jim Pollock became the seventh mayor. He is proud and passionate about all things "Whyalla," has seen the city "bounce back to life" and shares an excitement and optimism about Whyalla's future, despite the many economic and development issues still facing both Whyalla and the State.

### Exceptionally diverse council

WHYALLA Council has one of the most diverse operations of any local government.

It operates an airport, public library, child care centre, cemetery and crematorium, visitor information centre, maritime museum, lighthouse, waste landfill site and recycling centre, marina and boat ramps.

Council also owns the city's leisure centre and is responsible for all major development covering the foreshore, wetlands, water saving and harvesting

initiatives, public works and innovative environmental projects.

In recent years Council has worked closely with residents to develop its "Whyalla Community Plan: Whyalla Towards 2022 Vision" and the "Whyalla Sports and Recreation Master Plan."

Council has embarked on facilitating some major infrastructure projects with its new industrial estate set to be a major cornerstone to the city's progressive future.

**CELEBRATING  
JESSOP-WHITE PARK  
OPENING AND  
40 YEARS OF LOCAL  
GOVERNMENT IN WHYALLA!**

**Sunday 4th July, 2010**

**11am - 2pm**

**At Jessop-White Park,  
Whitehead Street**

**Official Ceremony by  
Mayor Jim Pollock 12noon**

**FREE FREE FREE  
Bouncy Castle**

**Devonshire Tea**

**Sausage sizzle  
700 to give away**

**Entertainment by the  
Bad, Bad Boys**



# ...of proudly serving its community!

## LOCAL GOVERNMENT CHAPTER 2:

# City Council replaces Commission

ON JULY 4, 1970 the Whyalla Town Commission was disbanded and the Corporation of the City of Whyalla came into being with a mayor and eight councillors representing four wards.

This first fully elected council comprised Mayor Keith Wilson and Councillors Colin Murray Norton, Mervin Robert Knuckey, Aileen Christina Ekblom, Donald Christopher Sarre, Donald Goldberg Jacquier, Maxwell John Brown, Vivienne Isabel Cruickshank and George Vlachoulis.

The average voting turnout was 37.1 percent, varying in individual wards from 23.1 percent to 50.3 percent.

John Alexander Laird Menard was appointed the first Town Clerk, a position he still held when the title changed to City Manager in 1984, continuing for another six years before retiring after a 20-year term steering local government in Whyalla.

Mr Menard was succeeded by David Knox who has the achievement of being the second longest serving City Manager of 13 years before taking early retirement in 2003.

### First development plan

The first Development Plan, described as a "very general" document was introduced in 1970, but most of Whyalla's suburbs and infrastructure had been built by then and the character of the city was already established.

Zoning was introduced in 1973 and council was then able to control development through planning. Five years later council boundaries were expanded to include non-urban areas.

A major revision of zoning and of the earlier Development Plan was completed in 1982. Following the introduction of a new State Planning Act the same year, a further substantial revision was started almost immediately.

October 1973 saw the Whyalla Council office procedures move into the computer age with the installation of a visual record computer at a cost of \$40,000.

Prior to that, manual typewriters for secretarial staff were the standard issue, followed by electric typewriters using the "golf ball" format and then the "latest Daisy wheel" system.

The visual record computer was replaced 10 years later by a disc computer system providing on-line information at a cost of

\$125,000, with a further \$60,000 for additional upgrading in the 1985/1986 Budget.

Twenty-five years on, those early days are looked upon "fondly" with equipment that at the time was "new age" but by today's standard of technological development is so vastly antiquated.

The 1970s saw many projects for major community facilities undertaken through Federal, State or Council funding, for ultimate operation by Council. These included a child care centre, a recreation and leisure centre, a third public library, a fauna and reptile park, and the takeover and considerable upgrading of the city's bus service.

### Footpath program

In 1979 Council embarked upon a long-term policy of replacing all footpaths in the city with concrete at an annual expenditure of between \$100,000 and \$150,000.

In 1981 three aldermen were incorporated into the Council, the successful candidates in the first aldermanic election being Keith James Wilson, Alfred George Aikman and Donald Goldberg Jacquier. This gave a total of 11 elected members – eight councillors, three aldermen and one mayor.

The early and mid 1980s saw continued development by Council and both private and government developers. Major extensions to the Whyalla College of TAFE (now TAFE SA, Whyalla campus) were completed by 1980, and at the same time BHP started a two-year expansion program equal to \$1million per week.

In 1984 Santos commissioned a fractionation plant at Port Bonython. The cost of the whole project, including a 659km pipeline and a 2.4km jetty to waiting tankers, was \$1.4billion.

From industry to social needs, and 1985 saw the results of many years' planning and fundraising with the construction of the Yeltana Nursing Home. The total cost was more than \$1.8million, of which Council provided \$600,000 and the community a further \$390,000.

### Economic downturn

However, Whyalla suffered a severe blow to its economy and growth when the shipyard closed in 1978 and a downturn in the steel industry worldwide resulted in stringent rationalisation within BHP.

These setbacks dogged Whyalla well into the 1990s as the population gradually lost around



10,000 residents from its buoyant days.

With growth reversing and development slowing down significantly, Whyalla certainly felt its share of "lows." From the mid 1990s development approvals started to lift, although with a degree of inconsistency.

Nevertheless, there were positive trends clearly surfacing, while success stories again became more apparent.

By 2003 major development resurgence – particularly in residential building activity – was in full swing and in just five years development approvals rocketed from \$11.5million to a massive \$56.3million.

During this period, 462 new houses were approved worth more than \$80million, while the biggest industrial estate in SA was developed by Council.

### Growth continues

Into 2010 residential growth continues with other retail development on the horizon.

The steel industry became more secure with the establishment of OneSteel to take over from BHP, and the subsequent developments and commitments to ensure the company had a long-term future certainly reflected a new positiveness in Whyalla. However, 35 years on from the early 1970s and the population



drop in conjunction with changing trends and rising costs saw the demise of some of the developments of the time. The public libraries by necessity were rationalised to two (soon to become one new centralised state-of-the-art community facility.) The fauna and reptile park closed – a victim of rising costs and shrinking markets for this type of facility, while the public bus service was privatised to minimise its operational costs on ratepayers.

Entering the 21st Century, Council saw the opportunity to streamline its operation, more in keeping with the 2000s, and opted for the removal of its previous ward system of eight councillors representing individual wards, and three aldermen representing the whole city, to be replaced with

ten councillors representing the whole of Whyalla, plus the mayor. In 2009 the number of councillors was further reduced to nine.

Local government elections this November will see a new Whyalla Council embarking on its next 40 years just as hectic and no doubt with its share of broad community issues, as it did 40 years ago.

Whyalla Council will continue to be under constant pressure to ensure a fine balancing act maintains its financial sustainability while providing all sectors of its community with the services and facilities expected in such a large modern, regional centre.

## It wasn't all smooth sailing

*"CONSISTENT high demand for steel, major shipbuilding orders, continuing housing development and general commercial and business expansion are factors which spell a year of confidence ahead of Whyalla.*

*"On the civic scene, the most notable change will come about in July when the new fully-elected city council will take over from the existing city commission."*

This was how the *Whyalla News* reported the state of Whyalla in January 1970, the year fully-elected local government came into being.

The wheels for this development had been set in motion two years earlier when a petition was

circulated throughout the city calling for a fully elected council to replace the commission.

However, it wasn't all smooth sailing as some residents were so keen for the change they signed the petition more than once, while others signed it despite being ineligible to do so.

Each signature was carefully checked by a team of scrutineers and when it was found to be 275 names short of a majority, members of the Australian Labour Party door-knocked homes to get the required number.

The petition was presented to Parliament by local State Member Mr R Loveday.

In August the Government set up an inquiry to decide the form of

the new council and in November formal talks began.

Community organisations were invited to submit their views to the Government committee and it was also decided to ban press coverage of these submissions.

With submissions taken, the State Government eventually passed the Bill allowing for fully elected local government in Whyalla.

When longtime city commission chairman Charles Ryan left in January 1970 after a rousing farewell where he was honoured with the Freedom of the City, Mr F Elliott was appointed acting chairman until the formal election in July.

And since then it's been another 40 years of history!



# Countdown starts for annual dog registration renewal

WHYALLA dog owners are reminded that all registrations expire on June 30 and must be renewed by August 1, 2010.

Council will post out renewal notices in the first week of July to owners of all dogs shown on the Register of Dogs as at June 30, last year.

Residents who have moved house, disposed of their dog or if it has died, are asked to notify Council immediately to ensure that the register is accurate.

Similarly, residents who still own a dog and do not receive a renewal notice, should contact Council to determine why they did not receive a renewal notice.

Council staff will check the previous register against renewals and may visit dog owners who have failed to renew registration.

Any person found to own or be responsible for an unregistered dog after August 1 will be issued with an expiation notice (\$80 fee) and be required to register the dog within 14 days of detection. A 25% late payment fee will also apply.

If the dog remains unregistered after a further 14 days, an additional expiation notice will be issued and a further 14 days allowed to pay the registration and late fees.

The dog owner will receive a

summons to appear in Court if the dog continues to be unregistered.

Council encourages all dog

owners to avoid unnecessary late penalties by ensuring all animals are registered by the due date.

## REGISTRATION FEES 2010/2011

DOG registration fees will increase for the first time in six years, reflecting impact of the various CPI increases during this time.

| Class of Registration              | Full Fee | Conces. |
|------------------------------------|----------|---------|
| Normal                             | \$50     | \$25    |
| Microchipped                       | \$45     | \$22.50 |
| Obedience trained                  | \$45     | \$22.50 |
| Microchipped and obedience trained | \$40     | \$20    |
| Desexed                            | \$30     | \$15    |
| Desexed and Microchipped           | \$25     | \$12.50 |
| Desexed and obedience trained      | \$25     | \$12.50 |
| Desexed, microchipped and trained  | \$20     | \$10    |
| Working dog                        | \$10     | Nil     |
| Registered racing greyhound        | \$10     | Nil     |
| <b>Miscellaneous fees</b>          |          |         |
| Late payment                       | \$12.50  | Nil     |
| Transfer dog registration          | \$6      | Nil     |
| Replacement registration           | \$2.50   | Nil     |
| Change of address                  | FREE     | FREE    |
| Accredited guide dogs              | FREE     | FREE    |

Dog owners are reminded that:

- Proof of any rebate claimed may be required.
- Concessional registration will only be given to two dogs per household regardless of ownership.
- Microchipping does not replace registration.
- Microchip details MUST be recorded on a national data base before this rebate can be given.



## Latest on Memorial Oval

ALL greyhound lighting, dog lure rail and old oval fencing has been removed to improve aesthetics of the area, while eliminating potential hazards of dilapidated structures.

Bollards and aluminium seating has been installed to provide improved spectator facilities and prevent vehicle access onto the turf surface. Line marking will be applied around the oval to delineate the playing arena from the public accessible grassed area.

Greyhound kennels and former TAB building have been demolished as they had been identified as potentially hazardous structures with asbestos concerns. Council's sport and recreation officer is investigating replacement of the scoreboard with an electronic version.

Meanwhile, an internal working party is investigating options for the old tuck shop site. A further recommendation will be submitted to Council once options have been fully investigated and costed.

## And, neighbourhood park upgrades

THREE neighbourhood parks in Abraham Drive, Middleback Park and Tyler Crescent are under redevelopment. Playgrounds have been installed in Abraham Drive and Tyler Crescent, while a third is awaiting installers to complete Middleback Park. Subsurface irrigation has been installed with shelters and basketball/netball courts to follow.

Loring Street Reserve and Norton Park will have drippers installed and plantings completed during the coming months, along with drippers, plants and mulch at Tyler Crescent. Abraham Drive and Middleback Park works will also be completed as part of the 2010/2011 budget.

**A message for dog & cat owners!**

Whyalla Council is pleased to join with Microchips Australia to run its annual


# PET MICROCHIP DAY

**Saturday, July 24, 2010**  
**10am-2pm**

**Whyalla Dog Management Centre**  
Cnr Watts and Cook Streets, next to RSPCA

**Keep your pet's safe for life with a TROVAN MICROCHIP.**  
**Only \$30 per animal – a discounted price.**

**Dogs must be on a lead while cats must be secured in a cage or suitably restrained - NO BOOKING REQUIRED.**




A microchip is about the size of a grain of rice. Inserted by a local vet, the microchip causes no discomfort or pain to your animal companion.

The barcode on the microchip is linked to your contact details and recorded on the Central Animal Records Database for the life of your pet. This means it is permanently identified Australia-wide and can be returned to you, even if its collar or Council ID disc has come off.

You will also receive an external tag and a Certificate of Identification which will be posted to you.

**DID YOU KNOW?**  
Cats caught at large by a compliance officer without any form of contact information can be destroyed immediately, so a microchip helps ensure its safe protection.

**For more information phone**  
**Whyalla Council on 8640 3444.**

# Microchip does not replace rego, but is chip still working?

CARING dog owners who had their animal implanted with a microchip more than five years ago are being encouraged to have them checked to ensure recorded details are correct and that the chip is operating.

A disturbing and growing trend of unregistered and impounded dogs being detected with incorrect details on national data bases has concerned Whyalla Council's legislation compliance team, which operates the city's stray dog pound in Watts Street.

A Council Senior Legislation Compliance Officer, Steve Woolley, explained that when a dog was implanted with a microchip, the treating veterinarian recorded the owner's details and forwarded them to an appropriate data base.

"If the dog is found wandering at large, the impounding officer can scan the dog, contact the data bases and find the owner," Mr Woolley said.

"We have had several recent incidents where the chip was

either not recorded as having been allocated to an animal, or the owner's details were out of date leading to the animal not being returned to its owner.

"In other instances, the chip, which is smaller than a grain of rice, has moved within the animal, passed beyond the depth of the chip reader's capabilities or is of a type not distributed in Australia and does not show up on the chip readers.

"Council urges any dog owner who had their dog microchipped more than five years ago to have it checked, while ensuring that their current details are correctly recorded on one of the national data bases," Mr Woolley said.

Supporting these comments, Council's Registrar of Dogs, Ronald Versteegh emphasised that dog owners needed to be aware that the implanting of a microchip did not remove the legal requirement to register the animal with Council.

He said the Dog and Cat Management Act required all dogs

of or over the age of three months to be registered in the Council area where they are normally kept. Penalties of up to \$2,500 applied for non compliance and expiation fees of between \$80 and \$210 may be issued.

"Microchips are a supplementary form of identification and do not over-ride State legislation. If we impound a dog that is carrying a chip we can use that information to help identify the owner, but the dog must still be registered with Council, Mr Versteegh said.

"We run annual microchip implanting days at a reduced cost and provide a 10% discount of the dog registration fee when the owner produces a certificate of implantation. The Act requires dog registration fees to be spent in administering the Act and providing impounding facilities," Mr Versteegh concluded.

**Further microchipping information from Council's Legislation Compliance Team, 8640 3444, or at all Whyalla veterinary clinics.**

## UPDATES... UPDATES... UPDATES... UPDATES... UPDATES...

### Fitzgerald Bay Road

WORK on the next 1.1km section to be bitumen sealed is continuing and expected to be completed by June 30. Maintenance work on the road in general includes re-sheeting and patrol grading of unsealed sections as part of Council's recurrent programs.

### Industrial estate lighting

INSTALLATION of 32 solar lights, including battery boxes and connections, has been completed. Some lights had to be repositioned due to rocky conditions during installation. Defective bulbs as identified by the supplier are progressively being replaced.

### Sport master plan

THE *be active* officer has continued to work with the sport and recreation master plan committee to drive the plan and associated projects. A *be active* website is still under development, but should be ready early in the new financial year.



# Engagement, mentoring project in high demand

From **STEVE ARNDT**  
Chief Executive Officer  
Whyalla Economic  
Development Board

**WHYALLA**  
ECONOMIC DEVELOPMENT BOARD Inc.



MORE than 60 job seekers have been assisted to overcome barriers to employment and further education with an engagement and mentoring project.

Delivered by the Training Duo through the *South Australia Works in the Regions*, an initial session attracted 27 attendees.

A positive level of support and assistance was received from all agencies, including the Whyalla Career Development Centre, Job Services Australia, TAFE, Settling our Future and WEDB.

An ongoing referral process has also worked well with around 25 participants being referred to the career development centre for support with resumes, cover-letters and interview techniques. Participants have also shown a

positive attitude in their attendance and participation throughout the project. Their interest in the topics, as well as their willingness to join in the activities of the first workshop, *Presenting a Positive Image*, was very encouraging and some great progress has been made in self confidence and communication.

The second workshop, *Winning the Job*, attracted more than 30 participants and the third workshop, *Building Work Skills*, is expected to be just as successful.

## Allied health, services certificate opportunities assistance

AS ANNOUNCED in the autumn edition of *Whyalla Council News*, 20 local jobseekers have been given the opportunity to gain a Certificate III qualification and entry level position in to the allied health field.

This was made possible through a partnership with *South Australia Works in the Regions*, WEDB, TAFESA Regional, and the Whyalla Allied Health team.

In response to industry demand for qualified and trained employees, the fully funded training has been customised to enable graduates to be ready for employment in the local health, community, and aged care sector.

Face-to-face training will be undertaken two days a week for 22 weeks, and will initially strengthen generic health and care

employability skills, followed by a focus on specific disciplines of allied health, nursing in acute care, and community and aged care.

Whyalla Hospital and Health Services, and Whyalla Aged Care are supporting the program with on-the-job industry placements of up to 80 hours.

On completion, participants will be eligible for both a Certificate III in Allied Health Assistants, and a Certificate III in Health Services Assistants, and additional accredited training with an aged care focus.

These certificates may provide pathways to other accredited training such as Certificate III in Aged Care or Certificate III In Home and Community Care; Certificate IV Allied Health; or Diploma of Enrolled Nursing (Div2/EN).

## Migrants want to stay in Whyalla

RECENT State Government figures from Immigration SA indicate that migrants are happy to continue living in a regional city after their arrival through employer sponsorship visas.

Whyalla recorded the highest

number of outer metropolitan permanent residency visa approvals in SA last year with 61 compared to the closest at 55 in the Riverland.

Continued support from settlement services through Advancing Whyalla has been a key feature in assisting new migrants to integrate into the community, along with employer willingness to offer sponsorship for the permanent residency visa.

Occupations approved for permanent residency on the Regional Skilled Migration Scheme include metal machinists, boilermakers, welders, electricians and fitters.

## WEDB CONTACTS

Nicolson Avenue, between  
Uni SA and Whyalla Tafe.  
PO Box 804, Whyalla SA  
Ph: 8645 7811. Fax: 8645 1278  
Email: [info@wedb.com.au](mailto:info@wedb.com.au)  
Web: [www.wedb.com.au](http://www.wedb.com.au)

## READ ALL ABOUT IT!

In the spring edition of *Whyalla Council News*:  
Full overview of Council's annual business plan and budget for 2010/2011.  
Launch of 2011 Australia Day awards.



## COUNCIL STAFF EASTER BUNNIES

COUNCIL staff have continued the year helping various charitable fundraising projects. At Easter, staff again joined forces to donate a collection of chocolate goodies for Mission Australia to distribute. Pictured with just some of the array are, from left, Alberto Salatino, Coral Smith, Michelle Armstrong and Jane Hayward. Other fundraisers have included Australia's Biggest Morning Tea and for two young local men made paraplegics in separate accidents, with more fundraising causes still to come.

## Youngsters invade Whyalla's libraries

COUNCIL'S Alex Ramsay and Civic Libraries continue to attract large numbers to their various children's programs.

Under the guidance of Children's Librarian Treann Clarke, hundreds of youngsters have enjoyed special activities, according to figures released in City Librarian Vicki Ledo's quarterly report to March 31.

A total of 2,208 children participated in the various programs during the quarter, bringing the overall figure for the first nine months of the current financial year to more than 7,300.

These included:

**Gigglepots:** 198 babies over nine sessions at Civic for a "baby bounce and rhyme" program.

**Pre-school story time:** 181 children at 10 Alex Ramsay sessions, and 375 children at 20 Civic sessions comprising 30 to 45-minute programs for 2 to 5 years.

**Family day care story time:** 75 children attended five sessions at Alex Ramsay during school terms for family day care providers.

**Children's outreach program:** Demand from kindergartens and child care centres for this service resulted in an expanded program. The children's librarian assistant attends each centre on a fortnightly rotational basis and during the quarter saw 1,310 children.

**January school holidays:** A two-day boat-making workshop was held at Civic to encourage more children to enter the bottomless boat race at Council's Australia Day celebrations with 34 attending a successful activity.

**Summer reading program:** 35 students, 5 years and older, participated throughout the holiday period, concluding in mid February.

## Have you been to Whyalla Public Library lately? Preschool Storytime

Fun for 2 to 5 year olds

Come along to Alex Ramsay and Civic Libraries for preschool storytime. Children will share stories, songs and craft activities. Parents and caregivers are welcome to assist as their children develop a love of books and participate in fun activities in the supportive environment of the library.



There is a different theme each week to guide stories and activities. All children are encouraged and praised for their efforts. Sessions are held each week (except in school holidays) for around 45 minutes.

So, if you have a youngster between 2 and 5 years, consider storytime sessions.

ALEX RAMSAY – 10.30am Wednesday.  
Phone 8649 3000 for bookings. No session cost.

CIVIC – 10.30am & 1.30pm Thursday.  
Phone 8645 7891 for bookings. No session cost.

## Gigglepots!



A baby & toddler rhyme program for 0 to 2 year olds

Tailored to meet the language and literacy needs of babies and toddlers in a fun and stimulating environment. Each session is around 30 minutes. A combination of songs, rhymes and a story with musical instruments, puppets and books.

Tea and coffee is available after the session!

Civic Library – 10.30am Friday.  
Phone 8645 7891 for bookings. No session cost.



# Is it the flu or a common cold? Can be a confusing mix!

SEASONAL influenza is often confused with the common cold as they are both respiratory illnesses, but are caused by different viruses.

While they have similar symptoms, the seasonal flu is more severe and tends to make your whole body ache.

Symptoms include:

- A fever (temp over 38°C) that often appears suddenly.
- Headache.
- Muscle aches and pains.
- Sore throat.
- Dry cough.
- Trouble breathing.
- Stuffy or runny nose.
- Tiredness.
- Loss of appetite.

The fever usually subsides in three to five days and the person begins to feel better, although tiredness and the cough may persist for a few weeks.

Adults can spread the flu virus for up to seven days, primary school aged children for up to 14 days and pre-school aged children for up to 21 days.

Seasonal influenza vaccination is made using an inactivated (not live) part of the influenza virus. As it is not a live virus it cannot cause influenza. When injected into the body's immune system it forms antibodies to the virus so that if the person then comes into contact with this particular influenza virus, the body will recognise and fight against it.

Influenza viruses currently circulating in humans undergo frequent small changes, which is why there is a new vaccine every year. Last year's vaccine will not protect this year. In a healthy person under 65 years of age, it is 70 to 90% effective.

From **SAMANTHA ROWE** and **STEPHEN PAYNE**  
Council's Environmental Health Officers

Vaccine is recommended for:

- Non indigenous persons more than 65 years and indigenous 15 years and up.
- Children more than six months and adults with chronic cardiac, respiratory conditions and those with chronic illnesses eg. diabetes, chronic renal failure,

immune suppression.

- Persons with immunodeficiency eg. HIV, cancer.
- Residents of nursing homes and other long term care facilities.
- Homeless and their carers.
- Women who are planning pregnancy or who will be in their second or third trimester.

## Wood heater smoke a source of pollution

DOMESTIC wood-burning heaters are one of the main sources of pollution affecting air quality.

Wood smoke contains many chemicals, some of which are toxic to humans. When inhaled, they can cause health problems particularly for people with respiratory and cardiovascular (heart) illnesses.



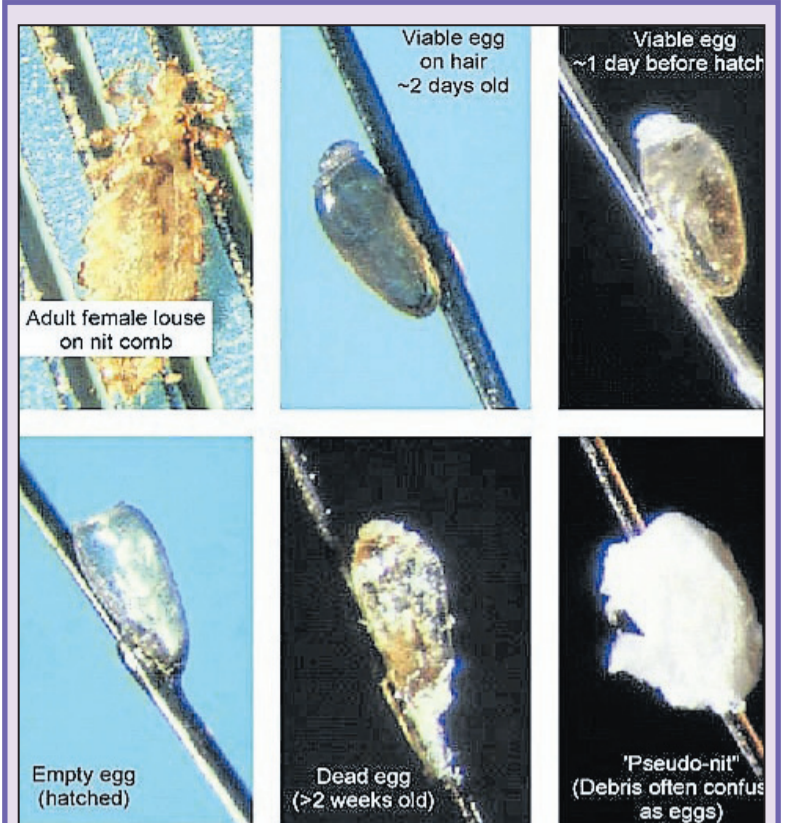
Secrets of successful burning:

- Only burn dry and seasoned wood. Seasoned logs should make a "crack" sound when banged together, not a dull thud. Unseasoned wood

contains a great deal of moisture, which reduces the burning temperature of the fire and causes smoke and pollutants.

- Keep air vents open for 20 minutes when starting and reloading the fire to ensure there is a vigorous flame.
- Keep the fire burning brightly, but let it go out at night. Most heaters burn better with three or four smaller logs rather than one or two large logs.
- If there is lack of any or all of the above factors, the fuel will not burn completely, excessive wood smoke will be emitted from the flue and owners will waste their fuel. Also remember to check there is no smoke from the flue 20 minutes after starting the fire by a physical check outside and inspection of the flue. If there is still smoke, owners may need to adjust the fuel or air vents to get a better fire.

For more information contact the Environmental Protection Authority website, [www.epa.sa.gov.au](http://www.epa.sa.gov.au), or Council's Environmental Health Officers, phone 8640 3444.



## ALWAYS KEEP EYES OPEN FOR HEADLICE

HEADLICE are rarely a threat to health, but their presence can have social, economic, psychological and educational repercussions.

They are transmitted by head-to-head contact with an infected person.

### Routine checking is essential

Headlice bites irritate the skin and often the first sign of infestation is vigorous scratching of the head.

Live eggs will be located close to the scalp. Hatched or dead eggs will be further down the hair strand. Good light and a magnifying glass will assist with the checking procedure.

A "wet combing" method of detection can help when numbers are low. This involves applying a generous amount of ordinary hair conditioner to dry hair and combing the whole head several times with a fine toothed

comb. The conditioner effectively slows the adult lice so that they can be combed out.

### Treatment

There is a range of headlice treatments available and all should be applied as recommended by the manufacturer.

Checking of the hair should be conducted for at least 10 days after treatment. If headlice appear to be resistant to one of the treatments, another product containing a different active ingredient should be used.

### Control measures

Items such as combs, brushes and headgear belonging to the person affected should be washed in hot water. Bed linen should be washed in 60°C hot water for 20 minutes and dried in the sun or hot air clothes dryer for 20 minutes to destroy eggs and lice.

## Be wise, immunise FREE in 2010

Whyalla Council will conduct immunisation clinics on the following dates, 2pm-4.45pm, at Bunyarra Christian Centre, Nicolson Ave, Corner Racecourse Rd.

**July 22 \* August 19  
September 16**

Free childhood immunisation includes: Diphtheria, tetanus, pertussis (whooping cough), polio, measles, mumps, rubella, haemophilias influenza type B (Hib), hepatitis B, meningococcal C and chicken pox

All childhood vaccinations up to 5 years of age are available at our clinics.

Council also provides Paediatric H1N1 (Swine Flu) vaccinations for children under 3 years and H1N1 vaccinations for children 3-5 years.

**All vaccines administered by registered nurses.**

Please bring your Medicare card and baby blue book for children under seven years.

**Please note, appointments now essential**

**For an appointment or further information simply phone Whyalla Council on 8640 3444.**

## Proper disposal of swim pool backwash water essential

SWIMMING pool water contains a range of treatment products such as chlorine, salt and acids, filtration media (sand, diatomaceous earth), dirt particles and wind-blown materials (leaves and lawn cuttings), as well as body oils, sunscreen residues and potentially harmful bacteria.

Disposing of, or allowing backwash water to run onto roadways, lanes, gutters, watercourses or a neighbouring property may result in the water combining with other pollutants in the stormwater system and create a potentially detrimental impact on the environment.

Therefore, allowing or disposing of swimming pool backwash water in this manner does not comply with the requirements of:

- Section 25 of the Environmental Protection Act 1993, General Environmental Duty; and
- Section 18 of the Public and Environmental Health Act 1987. Discharge of wastes in a



public place which breaches this requirement may result in fines of up to \$30,000.

### What to do:

Swimming pool backwash water should be directed to the sewer after obtaining approval from the Trade Wastes Section of SA Water (Ph: 7424 1336 or email: [tradewastebranch@sawater.com.au](mailto:tradewastebranch@sawater.com.au))

Alternatively, backwash water may also be discharged to the garden or lawn as a source of irrigation provided that the water is contained on the owner's property. Salt chlorinated pool water will require salt tolerant plant species.

## Community development projects

YOUTH Week events were successfully rolled out with the Small Day Out at Civic Park in April attracting around 300 youth who were entertained by six bands.

Planning for Naidoc Week is well under way. During the week of July 11 to 17, a flag raising, official march, family day and golf day will be held.

"Easy Moves for Active Aging" funding has been obtained for local health groups, through the sport and recreation officer, to undertake training to deliver suitable related programs.

The *be active* officer is producing a "getting started" booklet promoting local activities and tips on becoming physically active, which is expected to be available in October from Council, hospital, community health and other community services.

For further information contact Alberto Salatino, ph 8640 3444.



# WHAT'S ON!

## Whyalla's official Calendar of Events

### JUNE

#### Sat 26 & Sun 27: Tanderra Craft Village.

Monthly weekend market, Lincoln Hwy, 300 metres north of Whyalla Visitor Centre and Maritime Museum. 10am-4pm both days. Local craft and hobby groups, specialty shops, indoor and outdoor stalls, BBQ lunch, food and refreshments, mini golf, gallery, museum, entertainment. Something for all ages. Enquiries: 8645 4656.

### JULY

#### Sun 4: Ambrose Golf Day for Sam & Brian.

Whyalla Golf Club, tee off 11am. Proceeds for a donation to Wheelchair Sports Association towards sporting and recreational objectives for both Sam and Brian. Also BBQ and auction at 1pm including sporting memorabilia, tools and electronic goods. Family, friends and non golfers welcome. Further information via "What's On" www.whyalla.com, or e-mail organisers on ambrose-golf@hotmail.com

#### Weds 7: NAIDOC Week Golf Day.

Whyalla Golf Club, tee off 10am. For 15 years and over, under 18s free. Free BBQ lunch. Enquiries: Jeff Croft 8644 5141 or 0407 601 981.

#### July 10: City of Whyalla Pipe Band Annual Concert.

Central Whyalla Football Club, 7.30pm till late, cost \$18, light supper provided. Tickets phone Bernie 0414 335 048 or Jock 0412 618 026.

#### Sat 24 & Sun 25: Tanderra Craft Village.

Monthly weekend market, Lincoln Hwy, 300 metres north of Whyalla Visitor Centre and Maritime Museum. 10am-4pm both days. Local craft and hobby groups, specialty shops, indoor and outdoor stalls, BBQ lunch, food and refreshments, mini golf, gallery, museum, entertainment. Something for all ages. Enquiries: 8645 4656.

### AUGUST

#### Sat 7: Junk to Funk.

This recycled fashion contest is an opportunity for designers from all walks-of-life to showcase their creative and innovative skills by creating wearable works of art and garments from recycled materials. Judging at fashion parade during an alternatively elegant cocktail hour at Dfaces Hall, 7pm, raising funds for Whyalla Special School. Enquiries to Tricia 0409 074 172, or www.whyallasp.sa.edu.au.

#### Sat 21 (10am-10pm) & Sun 22 (10am-3pm): 40th Whyalla Show.

Jubilee Park, Jenkins Ave. Indoor & outdoor trade sites, demos, displays, one of the biggest selections of sideshows in regional SA, showbags, 4WD track & rides, ute muster, vintage & drag car displays, horses in action, model aero sport, and huge competitive sections. Free entertainment includes fireworks, Clydesdale trolley rides, animal nursery, bands, singers, fashion parade, roving characters and entertainment marquee. Start planning now to attend now, whether as a trader, competitor or patron. CONTACT: Secretary Michelle Head, PO Box 160, Whyalla, SA, 5600. Ph 8649 1800, fax 8649 1795, email: whyallashow@internode.on.net

#### Sat 28 & Sun 29: Tanderra Craft Village.

Monthly weekend market, Lincoln Hwy, 300 metres north of Whyalla Visitor Centre and Maritime Museum. 10am-4pm both days. Local craft and hobby groups, specialty shops, indoor and outdoor stalls, BBQ lunch, food and refreshments, mini golf, gallery, museum, entertainment. Something for all ages. Enquiries: 8645 4656.

### SEPTEMBER

#### Sat 25 & Sun 26: Tanderra Craft Village.

Monthly weekend market, Lincoln Hwy, 300 metres north of Whyalla Visitor Centre and Maritime Museum. 10am-4pm both days. Local craft and hobby groups, specialty shops, indoor and outdoor stalls, BBQ lunch, food and refreshments, mini golf, gallery, museum, entertainment. Something for all ages. Enquiries: 8645 4656.

### OCTOBER

#### Fri 1: Opening of Whyalla Art Group Spring Exhibition

Darling Tce gallery. 7.30pm for 8pm ceremony. Supper & drinks avail. Gold coin donation. More info later.

#### Sat 30: Whyalla Tappers Annual Charity Concert.

Middleback Theatre, two shows – 2pm and 7pm. Tickets \$10 avail at theatre, 8644 7300. More info later.

#### Sat 30 & Sun 31: Tanderra Craft Village Medieval Festival.

Lincoln Hwy, 300 metres north of Whyalla Visitor Centre and Maritime Museum. More info later. Enquiries: 8645 4895.

### NOVEMBER

#### Fri 19: Whyalla Art Group's Hummock Hill Painting Prize opening.

Darling Tce gallery. 7.30pm for 8pm ceremony. Supper & drinks avail. Gold coin donation. More info later.

#### Sat 20 & Sun 22: Tanderra Craft Village.

Monthly weekend market, Lincoln Hwy, 300 metres north of Whyalla Visitor Centre and Maritime Museum. 10am-4pm both days. Local craft and hobby groups, specialty shops, indoor and outdoor stalls, BBQ lunch, food and refreshments, mini golf, gallery, museum, entertainment. Something for all ages. Enquiries: 8645 4656.

#### Sat 27: OneSteel Whyalla Christmas Pageant – An Apex event.

More info later. Enquiries: Craig Sinclair 0408 239 504.

### DECEMBER

#### Sat 11 & Sun 12: Tanderra Craft Village.

Monthly weekend market, Lincoln Hwy, 300 metres north of Whyalla Visitor Centre and Maritime Museum. 10am-4pm both days. Local craft and hobby groups, specialty shops, indoor and outdoor stalls, BBQ lunch, food and refreshments, mini golf, gallery, museum, entertainment. Something for all ages. Enquiries: 8645 4656.

#### Sun 12: OneSteel Whyalla Carols in the Park – A Lions event.

Civic Park. More info later.

## UPDATES... UPDATES... UPDATES... UPDATES...



**Council says 'NO' to workers accommodation at Village Life.**

### Foreshore master plan

FURTHER specialist work is required to determine designs and costings for the proposed stage and renovations to the foreshore building, which along with car park modifications, will form the basis for the next stage of works.

However, due to current heavy staff commitments with other priorities we do not have the capacity to undertake this work at present.

Therefore, we are not able to finalise the next stage of works, which is necessary so that grant funding can be confirmed through Planning SA.

### Kingfish harbour

THIS project has undergone two further revisions in an attempt to bring it within the available budget. A detailed report will be provided to Council when final costings have been received.

*From STEWART PAYNE  
Group Manager  
Development Services*

### Art gallery

AS a result of further negotiations, Minister Hill has agreed to carry over grant funding on the basis of Council providing its commitment spread over two financial years, and subject to Council providing matching funding.

Work will proceed on design and costings of the project, also subject to current constraints.

### Development approvals

THE value of development approvals up to May 10 totalled 496 applications worth \$21.1million, including 59 dwellings.

There has been a reasonable increase in applications during the past few months. A large retail development application has

been lodged with another large application expected in the next few weeks.

Whyalla's Development Assessment Panel met on April 27 and approved a play café in the Norrie industrial area.

It also considered and rejected an application for workers accommodation at Village Life.

### Residential & Centres Variation Plan Amendment

COUNCIL has initiated a Residential and Centres Variation Development Plan Amendment to provide more guidance for lot sizes and residential density, and development of new retail centres in the western part of Whyalla.

Work will be undertaken mostly in-house with expert assistance sought in respect to retail analysis. Contributory funding will be sought from developers to subsidise costs incurred by Council.



**YMCA'S Holiday Program is back.**

**ENROL YOUR CHILD TODAY!**

Running every weekday (excl. public holidays) of the school holidays, your child can come along, have fun and make some new friends in a safe and friendly environment.

- Session time 9am-3pm
- \$15 per child or \$25 for two children.
- Swimming, Ball Sports, Arts & Crafts, Fun Mini Games and Movies included

**Whyalla Health & Leisure Centre**

Racecourse Road, Whyalla Norrie, SA  
Ph. 8645 5488 | www.sa.ymca.org.au



**YMCA**  
We build strong PEOPLE  
strong FAMILIES  
strong COMMUNITIES

**To get your event listed on the official WHAT'S ON send details to Rebecca Lichtenberger. E-mail: rebecca.lichtenberger@whyalla.sa.gov.au. Post: PO Box 126, Whyalla, SA, 5600. Fax: 8644 2355. Enquiries: 8644 3473.**



# Tourism focus on Whyalla when SA visitor centres come to town... and leave as top ambassadors!



## At the Maritime Museum

ABOVE: From left, Pauline Hedger (Port Augusta), Jane Marr (Port Augusta), Lisa Bond (Mount Lofty Summit), Janet Teague (Hawker), Ana Morris (Whyalla) and Athalie Verrall (Mannum).

TOP CENTRE: Natasha O'Leary (Yankalilla.)

TOP RIGHT: Joanne Seabrook (Barossa), Lynette Ancell (Gawler), Joyce Holmes (Murray Bridge.)

## In the City Plaza

BELOW: Chief Executive of the SA Tourism Industry Council, Ward Tilbrook with a popular local.

BOTTOM: Checking for the correct answers in a team-building exercise are, from left, Jan Paparella (Port Pirie), Corrina Siostrom (Barmera), Judeane Dennis (Port Lincoln) and Alison Farley (Mannum.)



## At the golf club dinner

LEFT: Looking after the conference delegates at the "Desperados" themed dinner were the Whyalla Visitor Centre team, from left, Ana Morris, Lyn Steenson, Leonie Willmott, Jenny Barnes, Kaylene Parkinson, Teresa Coles and Kay Wade.

BELOW CENTRE: Whyalla Mayor Jim Pollock with long-time stalwart of Eyre Peninsula tourism, Margie Stott, of Ceduna.

## At the Iron Knob mine

BELOW TOP: The spectacular view that greets all visitors on a tour of the old Iron Knob mine.

BELOW BOTTOM: Delegates get an exceptionally close look at the mine after alighting from their tour coach.

