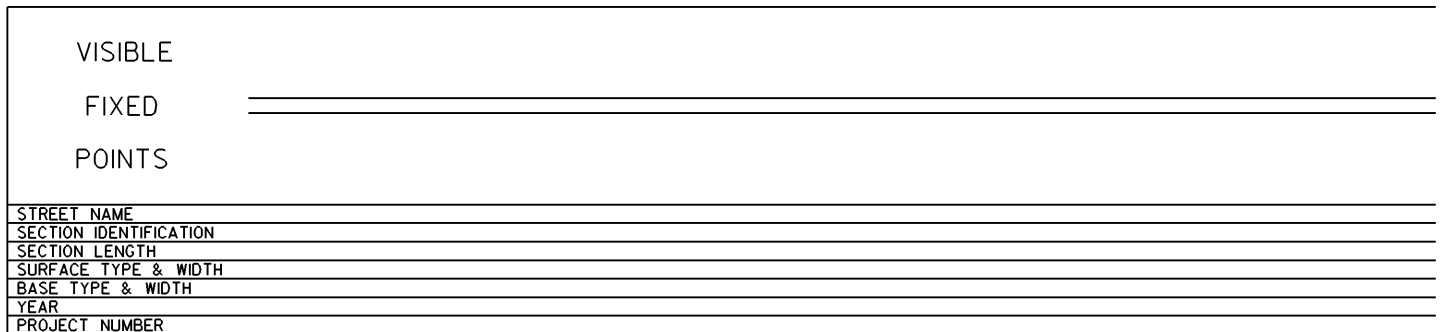
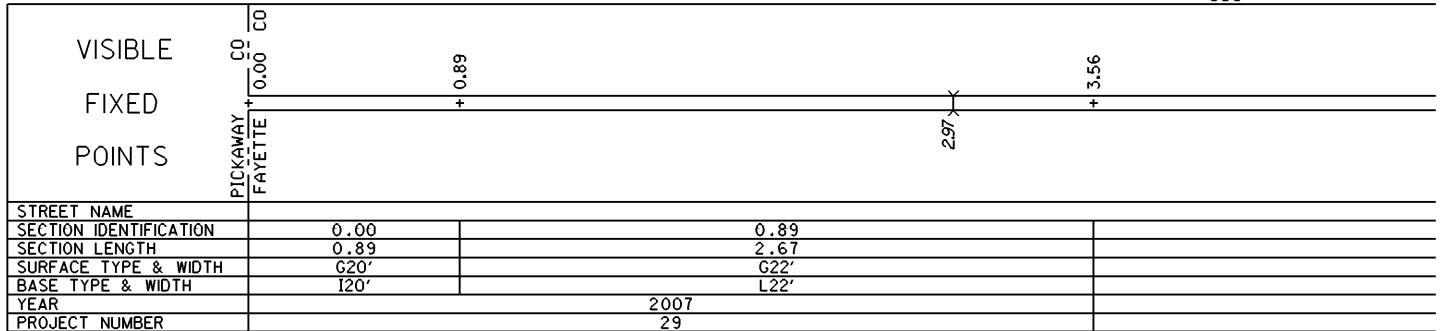
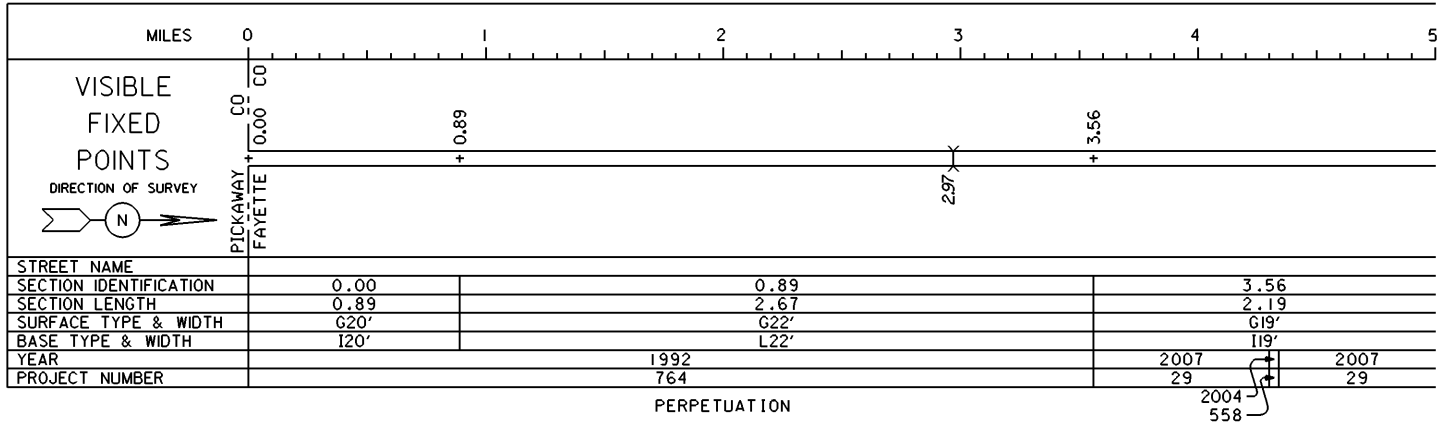


STATE OF OHIO - DEPARTMENT OF TRANSPORTATION

STATE ROUTE SECTIONS ON CONTINUOUS MILEAGE STATIONING

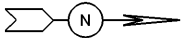
DISTRICT 6
 COUNTY FAYETTE
 ROUTE SR 207



STATE OF OHIO - DEPARTMENT OF TRANSPORTATION

STATE ROUTE SECTIONS ON CONTINUOUS MILEAGE STATIONING

DISTRICT 6
 COUNTY FAYETTE
 ROUTE SR 207

	MILES	5.00	5.20	5.40	5.60	5.80	6.00
VISIBLE FIXED POINTS DIRECTION OF SURVEY 							CO 5.75 CO FAYETTE MADISON
STREET NAME							
SECTION IDENTIFICATION	3.56						
SECTION LENGTH	2.19						
SURFACE TYPE & WIDTH	G19'						
BASE TYPE & WIDTH	I19'						
YEAR	2007						
PROJECT NUMBER	29						

PERPETUATION

VISIBLE FIXED POINTS							
STREET NAME							
SECTION IDENTIFICATION							
SECTION LENGTH							
SURFACE TYPE & WIDTH							
BASE TYPE & WIDTH							
YEAR							
PROJECT NUMBER							

VISIBLE FIXED POINTS							
STREET NAME							
SECTION IDENTIFICATION							
SECTION LENGTH							
SURFACE TYPE & WIDTH							
BASE TYPE & WIDTH							
YEAR							
PROJECT NUMBER							