

FRANKLIN & MARSHALL

February 2007 Statewide Keystone Poll

SUMMARY OF FINDINGS

Prepared by:
Center for Opinion Research
Floyd Institute for Public Policy
Franklin & Marshall College

BERWOOD A. YOST
DIRECTOR, FLOYD INSTITUTE FOR PUBLIC POLICY
DIRECTOR, CENTER FOR OPINION RESEARCH
HEAD METHODOLOGIST, KEYSTONE POLL

G. TERRY MADONNA
DIRECTOR, CENTER FOR POLITICS AND PUBLIC AFFAIRS
DIRECTOR, KEYSTONE POLL

JENNIFER L. HARDING
PROJECT MANAGER, CENTER FOR OPINION RESEARCH

ANGELA N. KNITTLE
PROJECT MANAGER, CENTER FOR OPINION RESEARCH

KAY K. HUEBNER
PROGRAMMER, CENTER FOR OPINION RESEARCH

February 28, 2007

Keystone  Poll

Methodology

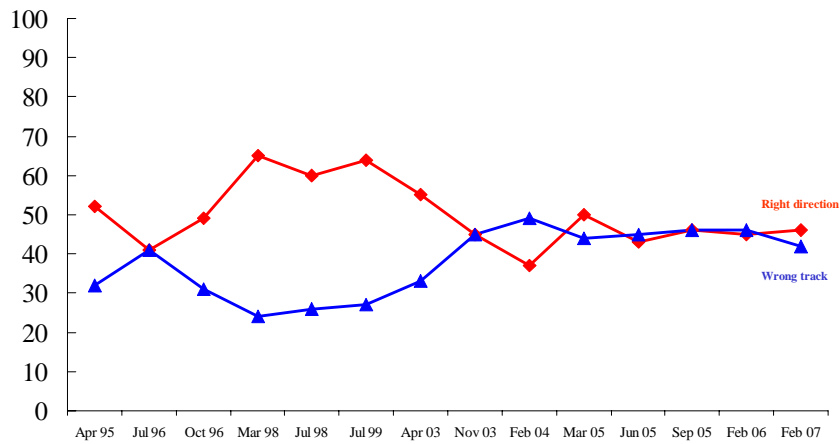
These Keystone Poll findings are based on telephone surveys conducted between February 19-25, 2007 at Franklin & Marshall College's Center for Opinion Research. The Poll was conducted under the direction of the Poll's Director, Terry Madonna, the Poll's Head Methodologist, Berwood Yost, and the Poll's Project Manager, Jennifer Harding. Surveys were completed with 638 residents of the state; 540 of these respondents were registered to vote at the time of the interview. Telephone numbers for the survey were generated via random digit dialing and respondents were randomly selected from within each household. The sample error is +/- 3.9% for the total sample and +/- 4.2% for registered respondents. Final survey results were weighted to adjust for different selection probabilities and non-response.

This Keystone Poll is produced in conjunction with the Philadelphia Daily News, the Harrisburg Patriot News, WGAL-TV, the Pittsburgh Tribune Review, and WTAE-TV. It may be used in whole or part, providing any use is attributed to Franklin & Marshall College.

Current State of Affairs in Pennsylvania

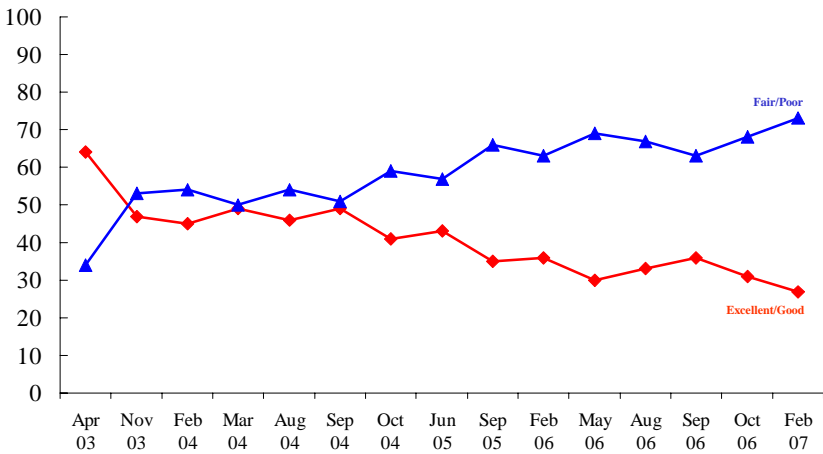
More residents (46%) say the state is moving in the right direction than say it is moving in the wrong direction (42%). As Figure 1 displays, these opinions have not changed significantly over the past few years.

Figure 1 PA Right Direction / Wrong Track, Time Series



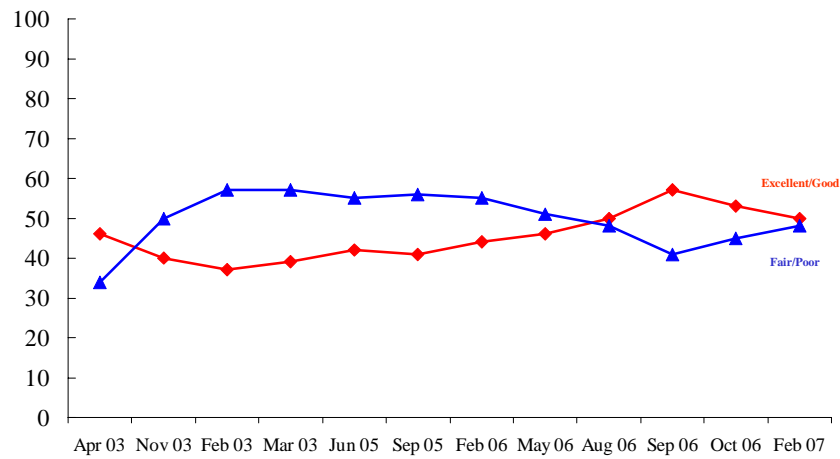
President Bush’s job performance rating continues to decline in the state (see Figure 2). Only a quarter of registered Pennsylvanians feel he is doing an excellent (5%) or good job (22%), and half (46%) of respondents say he is doing a poor job.

Figure 2 Bush Job Performance Rating, Time Series



Governor Rendell’s job performance rating holds steady from October (see Figure 3), with half of registered Pennsylvanians viewing his performance as excellent (11%) or good (39%) and a nearly equal proportion rating his performance as only fair (34%) or poor (14%).

Figure 3 Rendell Job Performance Rating, Time Series

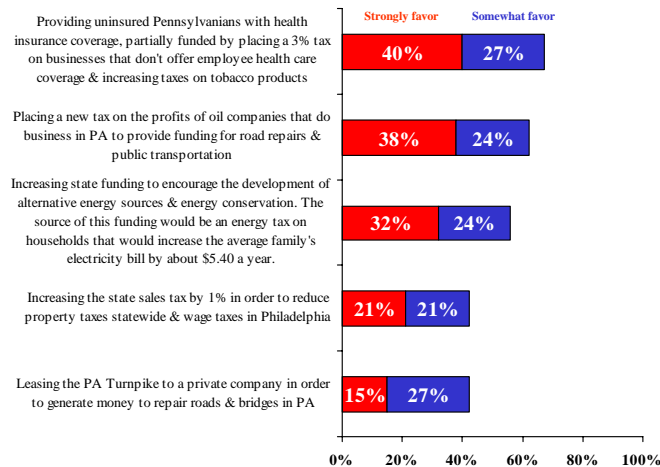


Governor Rendell’s 2007 Budget Proposals

Almost a third of the state’s residents heard a great deal (5%) or a fair amount (25%) about Governor Rendell’s 2007 budget proposals. When these respondents were asked what they remembered most about the Governor’s budget proposal, over half (53%) indicated some kind of tax hike, most often the sales tax hike proposal (15%).

When asked specifically about five of the Governor’s proposals, a majority of citizens favored providing more uninsured Pennsylvanians with health coverage (67%), taxing oil company profits (62%), and increasing funding for the development of alternative energy sources and conservation (56%) (see Figure 4).

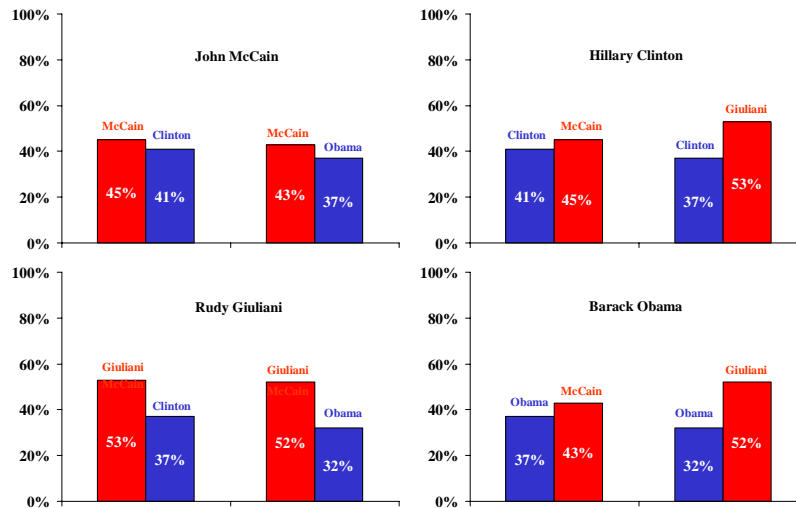
Figure 4 Support for Rendell’s 2007 Budget Proposals



The 2008 Presidential Election

Four Republican / Democrat 2008 presidential candidate match-ups were included in this survey. Presently, Rudy Giuliani enjoys a higher level of support from registered Pennsylvanians than do the other three candidates, and Barack Obama is the least popular of the four.

Figure 5 2008 Presidential Match-ups



As it now stands, Giuliani is the only candidate who is able to attract a majority of support from politically moderate Pennsylvanians. Giuliani garners the least support from residents of Philadelphia who tend to favor the Democratic candidates (see Appendix A for more details). Also, supporters of President Bush tend to view Giuliani more favorably than John McCain (92% and 73% favorable, respectively).

Appendix A:

2008 Presidential Vote Choice by Demographics

Table A-1. If the 2008 election for president was being held today and the candidates were (*rotated*) Hillary Clinton the Democrat and John McCain the Republican, who would you vote for?

	Clinton	McCain	Do Not Know
Region			
Philadelphia	68%	18%	14%
Northeast	52%	30%	19%
Allegheny	53%	33%	14%
Southwest	41%	47%	13%
Northwest	26%	54%	20%
Central	34%	55%	11%
Southeast	39%	47%	14%
Education			
High School or Less	40%	43%	17%
Some College	38%	47%	15%
College Degree	43%	46%	12%
Party Registration			
Republican	17%	70%	14%
Democrat	67%	21%	12%
Independent, Other	42%	38%	20%
Political Ideology			
Liberal	75%	22%	3%
Moderate	43%	40%	17%
Conservative	17%	69%	14%
Abortion Stance			
Legal under any circumstances	61%	30%	9%
Legal under certain circumstances	38%	47%	15%
Illegal in ALL circumstances	32%	53%	15%
Born Again Christian or Fundamentalist			
No	47%	41%	12%
Yes	21%	60%	19%
Racial Background			
White	38%	48%	15%
Nonwhite	85%	15%	0%
Household Income			
Less than \$35,000	46%	38%	16%
\$35-75,000	38%	47%	15%
Over \$75,000	41%	51%	8%
Gender			
Male	33%	53%	14%
Female	47%	38%	14%
Age			
18-34	54%	37%	10%
35-44	39%	43%	18%
45-54	33%	55%	13%
55-64	36%	47%	18%
65 and over	41%	44%	15%

Table A-2. If the 2008 election for president was being held today and the candidates were (*rotated*) John McCain the Republican and Barack Obama the Democrat, who would you vote for?

	McCain	Obama	Do Not Know
Region			
Philadelphia	24%	57%	18%
Northeast	39%	40%	21%
Allegheny	31%	48%	21%
Southwest	48%	35%	18%
Northwest	50%	30%	21%
Central	49%	32%	19%
Southeast	42%	38%	20%
Education			
High School or Less	48%	33%	20%
Some College	49%	29%	22%
College Degree	37%	45%	18%
Party Registration			
Republican	61%	17%	21%
Democrat	25%	59%	16%
Independent, Other	39%	41%	21%
Political Ideology			
Liberal	23%	73%	4%
Moderate	39%	38%	23%
Conservative	65%	13%	21%
Abortion Stance			
Legal under any circumstances	34%	52%	14%
Legal under certain circumstances	46%	36%	19%
Illegal in ALL circumstances	46%	29%	25%
Born Again Christian or Fundamentalist			
No	41%	39%	20%
Yes	52%	28%	20%
Racial Background			
White	46%	34%	20%
Nonwhite	18%	75%	7%
Household Income			
Less than \$35,000	40%	36%	24%
\$35-75,000	45%	37%	18%
Over \$75,000	49%	39%	13%
Gender			
Male	49%	36%	15%
Female	38%	38%	24%
Age			
18-34	33%	50%	17%
35-44	46%	35%	20%
45-54	48%	33%	18%
55-64	41%	37%	22%
65 and over	48%	29%	23%

Table A-3. If the 2008 election for president was being held today and the candidates were (*rotated*) Hillary Clinton the Democrat and Rudy Giuliani the Republican, who would you vote for?

	Clinton	Giuliani	Do Not Know
Region			
Philadelphia	58%	35%	7%
Northeast	38%	48%	13%
Allegheny	41%	47%	12%
Southwest	39%	45%	16%
Northwest	28%	62%	10%
Central	33%	60%	8%
Southeast	38%	53%	9%
Education			
High School or Less	38%	50%	12%
Some College	34%	54%	12%
College Degree	38%	55%	7%
Party Registration			
Republican	12%	79%	9%
Democrat	62%	27%	11%
Independent, Other	45%	48%	7%
Political Ideology			
Liberal	73%	22%	5%
Moderate	36%	52%	12%
Conservative	15%	77%	8%
Abortion Stance			
Legal under any circumstances	54%	33%	13%
Legal under certain circumstances	35%	56%	9%
Illegal in ALL circumstances	29%	60%	11%
Born Again Christian or Fundamentalist			
No	43%	47%	10%
Yes	19%	71%	9%
Racial Background			
White	34%	55%	11%
Nonwhite	77%	23%	0%
Household Income			
Less than \$35,000	40%	47%	13%
\$35-75,000	38%	54%	8%
Over \$75,000	34%	59%	7%
Gender			
Male	29%	62%	9%
Female	43%	46%	11%
Age			
18-34	43%	55%	2%
35-44	37%	49%	15%
45-54	34%	58%	8%
55-64	34%	55%	11%
65 and over	37%	46%	17%

Table A-4. If the 2008 election for president was being held today and the candidates were (*rotated*) Rudy Giuliani the Republican and Barack Obama the Democrat, who would you vote for?

	Giuliani	Obama	Do Not Know
Region			
Philadelphia	40%	53%	7%
Northeast	52%	33%	15%
Allegheny	53%	40%	7%
Southwest	52%	25%	23%
Northwest	55%	30%	15%
Central	53%	29%	18%
Southeast	55%	28%	18%
Education			
High School or Less	55%	29%	16%
Some College	54%	25%	21%
College Degree	49%	37%	13%
Party Registration			
Republican	74%	12%	15%
Democrat	29%	55%	17%
Independent, Other	51%	33%	16%
Political Ideology			
Liberal	28%	63%	9%
Moderate	51%	32%	17%
Conservative	72%	13%	15%
Abortion Stance			
Legal under any circumstances	37%	44%	19%
Legal under certain circumstances	55%	31%	13%
Illegal in ALL circumstances	58%	25%	17%
Born Again Christian or Fundamentalist			
No	48%	36%	16%
Yes	67%	19%	14%
Racial Background			
White	54%	30%	16%
Nonwhite	31%	69%	0%
Household Income			
Less than \$35,000	48%	33%	19%
\$35-75,000	51%	33%	15%
Over \$75,000	60%	30%	10%
Gender			
Male	57%	29%	14%
Female	48%	34%	18%
Age			
18-34	56%	35%	9%
35-44	55%	29%	16%
45-54	50%	33%	17%
55-64	48%	36%	16%
65 and over	48%	29%	23%

Appendix B:
Marginal Frequency Report

REG. Some people are registered to vote, and many others are not. Are you CURRENTLY REGISTERED to vote at your present address?

85% Yes
15% No

RegPARTY. Are you currently registered as a Republican, a Democrat, an Independent, or as something else?

n = 540 (registered respondents)

46% Republican
41% Democrat
11% Independent
1% Something else
1% Do not know

RightDir. All in all, do you think things in PENNSYLVANIA are generally headed in the RIGHT DIRECTION, or do you feel that things are off on the WRONG TRACK?

	Headed in right direction	Off on the wrong track	Do not know
Feb 2007	46%	42%	12%
Oct 2006*	47%	42%	11%
Sep 2006*	52%	36%	12%
Aug 2006*	50%	40%	10%
Feb 2006	45%	46%	9%
Nov 2005	39%	52%	10%
Sep 2005	46%	46%	8%
Jun 2005	43%	45%	12%
Mar 2005	50%	44%	6%
Oct 2004*	48%	39%	13%
Sep 2004*	46%	41%	13%
Aug 2004*	43%	40%	17%
Mar 2004*	33%	50%	18%
Feb 2004	37%	49%	14%
Nov 2003	45%	45%	10%
Apr 2003	55%	33%	12%
Sep 2002*	52%	32%	16%
Jun 2002*	55%	32%	13%
Jul 1999	64%	27%	9%
Sep 1998*	67%	15%	18%
Jul 1998	60%	26%	14%
Mar 1998	65%	24%	11%
Oct 1996	49%	31%	21%
Sep 1996*	49%	34%	17%
Jul 1996	41%	41%	18%
Apr 1995	52%	32%	17%

* Question asked of registered respondents only

Questions IntFavC through PrPairD were asked of registered respondents only, n = 540

IntFavC. I'd like to ask you a few questions about some people involved in politics today. Please let me know if your opinion of the person is favorable, not favorable, undecided, or if you haven't heard enough about the person to have an opinion. (rotated)

	Favorable	Not Favorable	Undecided	Don't know
ED RENDELL				
Feb 2007	53%	36%	8%	3%
Oct 2006	54%	30%	12%	4%
Sep 2006	52%	29%	16%	3%
Aug 2006	49%	33%	14%	4%
May 2006	48%	32%	16%	4%
Feb 2006	41%	40%	14%	5%
Nov 2005	39%	38%	18%	6%
Sep 2005	42%	36%	16%	6%
Jun 2005	41%	33%	17%	9%
Mar 2005	48%	28%	18%	7%
Aug 2004	46%	31%	17%	6%
Feb 2004	40%	32%	15%	14%
Nov 2003	46%	26%	21%	7%
Apr 2003	50%	19%	17%	16%
Oct 2002	50%	24%	18%	9%
Sep 2002	43%	19%	25%	14%
Jun 2002	40%	18%	26%	16%
Oct 2001	30%	8%	13%	50%
Apr 2001	29%	7%	11%	52%
Jul 1999	30%	7%	9%	54%
GEORGE BUSH				
Feb 2007	31%	60%	9%	0%
Oct 2006	32%	57%	10%	1%
Sep 2006	38%	50%	11%	1%
Aug 2006	36%	57%	6%	1%
May 2006	33%	53%	13%	1%
Feb 2006	38%	50%	11%	1%
Nov 2005	34%	54%	11%	1%
Sep 2005	39%	51%	9%	1%
Jun 2005	44%	45%	10%	1%
Mar 2005	43%	48%	8%	0%
Oct 2004	43%	46%	10%	1%
Sep 2004	46%	44%	10%	0%
Aug 2004	44%	46%	10%	0%
Mar 2004	45%	42%	12%	2%
Feb 2004	46%	43%	9%	3%
Nov 2003	49%	40%	11%	1%
Apr 2003	63%	25%	10%	2%
Oct 2000	43%	36%	18%	3%
Jul 2000	39%	35%	19%	7%
Feb 2000	32%	38%	24%	7%
Jul 1999	38%	16%	18%	28%

	Favorable	Not Favorable	Undecided	Don't know
HILLARY CLINTON				
Feb 2007	32%	46%	17%	5%
RUDY GIULIANI				
Feb 2007	52%	18%	16%	14%
BARACK OBAMA				
Feb 2007	31%	15%	20%	34%
JOHN MCCAIN				
Feb 2007	37%	23%	23%	17%
Feb 2000	44%	15%	28%	13%

PrPairA. If the 2008 election for President was being held today and the candidates were (*rotated*) Hillary Clinton the Democrat, and John McCain the Republican, would you vote for...

- 45% John McCain
- 41% Hillary Clinton
- 14% Do not know

PrPairB. If the 2008 election for President was being held today and the candidates were (*rotated*) John McCain the Republican, and Barack Obama the Democrat, would you vote for...

- 43% John McCain
- 37% Barack Obama
- 20% Do not know

PrPairC. If the 2008 election for President was being held today and the candidates were (*rotated*) Hillary Clinton the Democrat, and Rudy Giuliani the Republican, would you vote for...

- 53% Rudy Giuliani
- 37% Hillary Clinton
- 10% Do not know

PrPairD. If the 2008 election for President was being held today and the candidates were (*rotated*) Rudy Giuliani the Republican, and Barack Obama the Democrat, would you vote for...

- 52% Rudy Giuliani
- 32% Barack Obama
- 16% Do not know

Budg1. Earlier this month, Governor Ed Rendell announced his 2008 budget proposal. How much have you read or heard about the Governor's proposed budget...

- 5% A great deal
- 25% A fair amount
- 46% Not much
- 24% Nothing at all

Budg2. What do you remember MOST about the Governor's BUDGET proposal?

n = 187

- 21% Tax increases: in general
- 15% Taxes: sales tax increase
- 12% Healthcare related
- 8% Education related
- 8% Taxes: property tax decrease
- 5% Taxes: other
- 3% Taxes: alcohol, cigarette, tobacco
- 1% Energy conservation related
- 1% Leasing turnpike
- 1% Taxes: consumer energy spending
- 1% Nothing
- 13% Other
- 11% Do not know

IntBudg. I am going to briefly describe some of the Governor's budget proposals. For each, please tell me if you FAVOR or OPPOSE the proposal.

	Strongly favor	Somewhat favor	Somewhat oppose	Strongly oppose	Do not know
Providing uninsured Pennsylvanians with health insurance coverage, partially funded by placing a 3% tax on businesses that don't offer employee health care coverage, AND increasing taxes on tobacco products	40%	27%	9%	19%	5%
Placing a new tax on the profits of oil companies that do business in Pennsylvania to provide funding for road repairs and public transportation	38%	24%	13%	18%	7%
Increasing state funding to encourage the development of alternative energy sources and energy conservation. The source of this funding would be an energy tax on households that would increase the average family's electricity bill by about \$5.40 a year	32%	24%	17%	23%	4%
Increasing the STATE SALES tax by ONE percent in order to reduce property taxes statewide and wage taxes in Philadelphia	21%	21%	19%	33%	6%
Leasing the Pennsylvania Turnpike to a private company in order to generate money to repair roads and bridges in Pennsylvania	15%	27%	16%	28%	14%

Questions RatePres through Rate_StL were asked of registered respondents only, n = 540

Now I'd like to ask you about how well some elected officials are doing their jobs. First...

RatePres. How would you rate the way George Bush is handling his job as President? Would you say he is doing...

	Excellent job	Good job	Only a fair job	Poor job	Do Not Know
GEORGE BUSH, as President					
Feb 2007	5%	22%	27%	46%	0%
Oct 2006	8%	23%	25%	43%	1%
Sep 2006	10%	26%	27%	36%	1%
Aug 2006	9%	24%	24%	43%	0%
May 2006	7%	23%	24%	45%	1%
Feb 2006	10%	26%	23%	40%	1%
Sep 2005	10%	25%	24%	42%	1%
Jun 2005	12%	31%	27%	30%	1%
Oct 2004	14%	30%	28%	28%	0%
Sep 2004	18%	31%	27%	24%	0%
Aug 2004	16%	30%	26%	28%	1%
Mar 2004	15%	34%	26%	24%	1%
Feb 2004	13%	32%	26%	28%	1%
Nov 2003	15%	32%	25%	28%	2%
Apr 2003	33%	31%	19%	15%	2%

Rate_Gov. How would you rate the way that Ed Rendell is handling his job as Governor? Would you say he is doing...

	Excellent job	Good job	Only a fair job	Poor job	Do Not Know
ED RENDELL, as Governor					
Feb 2007	11%	39%	34%	14%	2%
Oct 2006	11%	42%	30%	15%	2%
Sep 2006	12%	45%	28%	13%	2%
Aug 2006	11%	39%	33%	15%	2%
May 2006	9%	37%	34%	17%	3%
Feb 2006	8%	36%	34%	21%	1%
Sep 2005	5%	36%	38%	18%	3%
Jun 2005	6%	36%	41%	14%	3%
Mar 2005	6%	33%	46%	11%	4%
Aug 2004	9%	37%	39%	12%	4%
Feb 2004	6%	31%	44%	13%	7%
Nov 2003	7%	33%	35%	15%	10%
Apr 2003	10%	36%	24%	10%	21%

Rate_StL. Now, thinking about the state legislature. What kind of job do you think the state legislature is doing overall? Would you say it is doing...

	Excellent job	Good job	Only a fair job	Poor job	Do Not Know
STATE LEGISLATURE, overall					
Feb 2007	1%	23%	48%	18%	10%
May 2006	1%	19%	51%	22%	7%
Sep 2005*	1%	21%	47%	22%	8%
Nov 2003*	1%	22%	55%	17%	5%
Feb 2000*	3%	33%	49%	7%	9%
Jul 1999*	2%	33%	49%	10%	6%

*Question asked of all respondents regardless of registration status

IntSLpro. There have been several proposals made to reform the way the state legislature operates. For each proposal I read, please tell me whether you would FAVOR or OPPOSE it.

	Strongly favor	Somewhat favor	Somewhat oppose	Strongly oppose	Do not know
Placing a LIMIT on the number of TERMS a legislator can serve as a committee chairman or in a leadership position	55%	22%	11%	6%	6%
Requiring that the legislature adjourn before election days so that a lawmakers' record is FINAL before voters are asked to vote for him or her	48%	34%	6%	5%	7%
Requiring legislators to wait 48 hours after changing a bill, before they can cast a final vote on the bill	46%	34%	7%	4%	9%

Judges. Pennsylvania currently selects JUDGES for its highest courts through direct ELECTIONS. Some people have PROPOSED switching to a system where these judges would be APPOINTED instead of elected. In this system, a nominating commission would generate a list of qualified candidates. The Governor would choose a name from the list and that person would have to be confirmed by the Senate. Would you FAVOR or OPPOSE amending Pennsylvania's Constitution from a system of elected judges to a system of APPOINTED JUDGES?

- 13% Strongly favor
- 12% Somewhat favor
- 15% Somewhat oppose
- 54% Strongly oppose
- 6% Do not know

DEMO. I now have a final few questions for statistical purposes only.

CNTY. Region of state

36%	Central
16%	Southeast
12%	Northeast
11%	Northwest
9%	Allegheny
9%	Southwest
7%	Philadelphia

AGE. What was your age on your last birthday?

8%	18-24
20%	25-34
18%	35-44
20%	45-54
14%	55-64
20%	65 and older

EDUC. What was the last grade level of schooling you have completed?

7%	Non high school graduate
31%	High school graduate or GED
12%	Some college
11%	Two-year or tech degree
19%	Four year college degree
20%	Post graduate degree

MAR. What is your current marital status?

21%	Single, never married
59%	Married
2%	Separated
9%	Divorced
9%	Widow, widower

LABR. Are you or is any member of your household a member of a LABOR UNION?

17%	Yes
82%	No
1%	Do not know

VET. Are you a military veteran?

12%	Yes
88%	No

IDEO. Politically speaking, do you consider yourself to be a liberal, a moderate, or a conservative?

n = 540 (registered respondents)

	Liberal	Moderate	Conservative	Do not know
Feb 2007	21%	41%	32%	6%
Oct 2006	17%	42%	35%	6%
Sep 2006	20%	39%	36%	5%
Aug 2006	19%	38%	38%	5%
May 2006	16%	43%	35%	6%
Feb 2006	21%	41%	34%	4%
Nov 2005	17%	42%	35%	7%
Sep 2005	22%	38%	35%	5%
Jun 2005*	19%	42%	33%	7%
Mar 2005*	16%	40%	38%	6%
Oct 2004	16%	39%	38%	7%
Sep 2004	16%	52%	29%	4%
Aug 2004	15%	48%	33%	3%
Mar 2004	16%	44%	34%	6%
Feb 2004	20%	41%	33%	7%
Nov 2003	21%	42%	31%	7%
Apr 2003*	19%	41%	35%	5%
Oct 2002	16%	41%	35%	8%
Sep 2002	18%	41%	35%	6%
Jun 2002	19%	43%	33%	5%
Oct 2001	20%	38%	36%	6%
Apr 2001	19%	36%	35%	9%
Oct 2000	22%	37%	33%	8%
Feb 2000	19%	44%	37%	0%
Jul 1999	18%	37%	39%	6%

*Question asked of all respondents regardless of registration status

PRTY1. Regardless of how you are registered, in politics, as of today, do you think of yourself as a Republican, a Democrat, or an Independent?

n = 540 (registered respondents)

	Strong Rep	Rep	Lean Rep	Pure Indep	Lean Dem	Dem	Strong Dem	Do not know
Feb 2007	17%	13%	14%	7%	14%	10%	20%	5%
Oct 2006	19%	10%	13%	6%	16%	9%	22%	5%
Sep 2006	19%	12%	12%	5%	16%	11%	20%	5%
Aug 2006	20%	10%	12%	5%	13%	11%	24%	5%
Oct 2004	25%	11%	6%	15%	9%	9%	24%	3%
Sep 2004	25%	13%	8%	6%	8%	12%	23%	4%
Aug 2004	24%	13%	7%	4%	11%	12%	24%	4%
Apr 2003	27%	16%	5%	5%	6%	18%	22%	3%
Oct 2000	20%	11%	12%	11%	10%	11%	21%	4%
Jul 1999	22%	20%	6%	6%	5%	19%	18%	4%

ABORT. Do you think that abortion should be...

	Legal under any circumstances	Legal under certain circumstances	Illegal in all circumstances	Do not know
Feb 2007	20%	53%	26%	1%
Oct 2006*	17%	62%	18%	3%
Sep 2006*	22%	54%	22%	2%
Aug 2006*	23%	56%	19%	2%
May 2006*	19%	65%	14%	2%
Feb 2006	23%	57%	17%	3%
Nov 2005	23%	55%	19%	3%
Sep 2005	24%	54%	19%	3%
Jun 2005	22%	55%	20%	4%
Mar 2005	18%	54%	25%	3%
Oct 2004*	18%	61%	19%	2%
Sep 2004*	22%	55%	22%	1%
Aug 2004*	20%	61%	18%	1%
Mar 2004*	16%	58%	24%	3%
Feb 2004	22%	54%	20%	4%
Nov 2003	23%	52%	21%	5%
Apr 2003*	22%	56%	21%	2%
Oct 2002*	29%	51%	17%	3%
Sep 2002*	26%	51%	19%	4%
Jun 2002*	26%	56%	15%	3%
Oct 2001*	25%	52%	20%	3%
Apr 2001*	25%	53%	18%	3%
Oct 2000*	26%	53%	15%	6%
Feb 2000*	23%	53%	20%	4%
Jul 1999	26%	54%	17%	3%

* Question asked of registered respondents only

GUN. Are you a gun owner?

32% Yes
 68% No

GUN2. Generally speaking, do you favor or oppose creating more laws that regulate gun ownership?

	Strongly favor	Somewhat favor	Somewhat oppose	Strongly oppose	Do not know
Feb 2007	39%	17%	15%	26%	3%
Oct 2006*	35%	16%	15%	26%	8%
Sep 2006*	34%	15%	17%	28%	6%
Aug 2006*	37%	15%	14%	27%	7%
May 2006*	37%	14%	16%	27%	6%
Feb 2006	35%	19%	17%	22%	7%
Nov 2005	38%	20%	14%	20%	8%
Sep 2005	39%	16%	13%	25%	8%
Jun 2005	39%	17%	16%	23%	6%
Oct 2004*	33%	19%	19%	23%	7%
Sep 2004*	38%	19%	15%	20%	8%
Aug 2004*	35%	20%	15%	23%	7%
Mar 2004*	42%	17%	14%	21%	7%
Oct 2002*	34%	18%	15%	26%	7%
Sep 2002*	28%	20%	14%	29%	9%
Jun 2002*	40%	14%	11%	28%	7%
Oct 2001*	33%	22%	15%	24%	6%
Apr 2001*	41%	18%	14%	22%	6%
Oct 2000*	37%	18%	15%	22%	9%
Feb 2000*	41%	19%	11%	24%	5%

* Question asked of registered respondents only

Hisp. Are you Hispanic or Latino, or not?

2% Yes
98% No

RACE. Which of the following categories best describes your racial background?

92% White
8% Non-white

NumA. Including yourself, how many adults 18 years of age or OLDER CURRENTLY live in this household?

26% One
59% Two
10% Three
5% Four or more

REL. Do you consider yourself to be Catholic, Protestant, Jewish or something else?

28% Catholic
36% Protestant
2% Jewish
34% Something else

BAC. Do you consider yourself to be a born-again Christian or fundamentalist, or not?

31%	Yes
67%	No
2%	Do not know

WORK Are you currently working FULL-time, PART-time, going to school, keeping house or something else?

54%	Full-time
10%	Part-time
6%	Going to school
7%	Keeping house
2%	Unemployed
2%	Disabled
19%	Retired

Recy1. Does the organization you work for have a recycling program, where employees are able to RECYCLE items such as PLASTIC and GLASS BOTTLES?

n = 392

56%	Yes
40%	No
4%	Do not know

Recy2. Does the organization you work for have a recycling program, where employees are able to RECYCLE PAPER products?

n = 392

60%	Yes
35%	No
5%	Do not know

INC1. And, just for statistical purposes, we need to know if your total family income is above or below \$50,000 per year?

17%	Under \$25,000
14%	\$25-\$35,000
11%	\$35-50,000
22%	\$50-75,000
15%	\$75-100,000
17%	Over \$100,000
4%	Do Not Know

DONE. Sex of respondent:

47%	Male
53%	Female