



*PROSPECTUS  
FOR THE AWARD OF  
SCHOLARSHIPS*



**Jardine Foundation**

# CONTENTS

---

Introduction	01
Chairman's Message	02-03
General Information	04-07
Scholars' Experience	08-09
Information on Cambridge University	
– <i>Downing College</i>	10
– <i>Magdalene College</i>	11
– <i>Peterhouse</i>	12
– <i>Trinity College</i>	13
Information on Oxford University	
– <i>Exeter College</i>	14
– <i>Oriel College</i>	15
– <i>Queen's College</i>	16
– <i>Trinity College</i>	17

# TODAY'S JARDINES

---

Founded as a trading company in China in 1832, Jardine Matheson is today a diversified business group focused principally on Asia. Its businesses comprise a combination of cash generating activities and long-term property assets.

The Group's interests include Jardine Pacific, Jardine Motors, Jardine Lloyd Thompson, Hongkong Land, Dairy Farm, Mandarin Oriental, Jardine Cycle & Carriage and Astra International. These companies are leaders in the fields of engineering and construction, transport services, insurance broking, property investment and development, retailing, restaurants, luxury hotels, motor vehicles and related activities, financial services, heavy equipment, mining and agribusiness. The Group also has a minority investment in Rothschilds Continuation, the global financial advisory group.

Jardine Matheson Holdings Limited is incorporated in Bermuda and has a premium listing on the London Stock Exchange, with secondary listings in Bermuda and Singapore. Jardine Matheson Limited operates from Hong Kong and provides management services to Group companies.

# INTRODUCTION

---

To mark its 150th Anniversary in June 1982, Jardine Matheson established an educational trust called The Jardine Foundation to provide scholarships to students.

The Foundation in its discretion awards Jardine Scholarships annually to students to enable them to attend educational establishments, primarily selected colleges at Oxford and Cambridge Universities in the United Kingdom.

The Jardine Foundation aims to assist scholars who have the potential to become outstanding citizens with a high commitment to the community. Consequently, the selection of candidates is based on a number of criteria, which include academic achievement, leadership qualities, and involvement in non-curricular activities and community affairs.

The scholarships are for first degree courses for periods of three or four years, or such longer period as the Trustee upon the recommendation of the Scholarship Committee may decide. They are tenable for courses at Oxford and Cambridge, with very strong preference being given to undergraduate courses at the following colleges:

## Cambridge University

Downing

Magdalene

Peterhouse

Trinity

## Oxford University

Exeter

Oriel

Queen's

Trinity

Since 1982, scholarships have been awarded to over 100 outstanding students from Bermuda, Hong Kong, mainland China, Indonesia, Japan, Malaysia, Singapore, Thailand and Vietnam.

# CHAIRMAN'S MESSAGE

---

On behalf of the Scholarship Committee, I would like to take this opportunity to introduce the Jardine Foundation and review its progress.

Founded in 1982 by the Jardine Matheson Group to mark its 150th Anniversary, the Jardine Foundation aims to support students from areas where the Group operates who have the potential to become outstanding citizens with a high commitment to the community. Scholarships are primarily awarded to selected colleges at Oxford and Cambridge Universities.



*Jardine Scholars in 2002 from left: Diane Mak, Chris Ko, Rebecca Cheng, Jonathan Allcock and Michi Wong.*

The selection of candidates is based on a number of criteria, which include academic achievement, leadership qualities, and involvement in non-curricular activities and community affairs. The receipt of the award is not only a financial reward, but also recognized by the schools and universities as a mark of achievement.

Since the Foundation's establishment, over 100 scholarships have been awarded. Most scholars are now established in their careers, working in areas such as medicine, investment banking, government services, languages, law, chemical

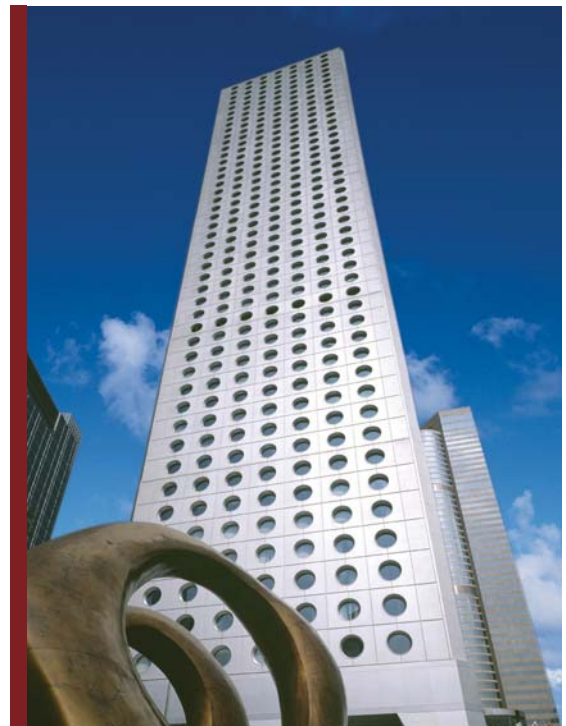
---

engineering and architecture. Others have elected to pursue higher studies in the field of academic specialization. Over time, we hope to see Jardine Scholars becoming senior members of their communities as they have the ability and determination to reach the top in their chosen professions.

Jardine Scholars are able to benefit from the unique qualities of an Oxbridge education. In particular, the collegiate system serves as the foundation for academic excellence across a broad spectrum of traditional academic disciplines. The Colleges provide students with accommodation, social facilities and regular tuition arrangements, allowing them to grow academically and personally. Within each College, staff and students of all disciplines can value the free exchange of ideas and experiences within an environment of cultural and social diversity.

The Jardine Foundation will continue to support fine young individuals from different parts of the world, particularly Asia, and help them achieve an exceptional foundation in life.

Duncan Robinson  
*Chairman*  
Scholarship Committee  
The Jardine Foundation



| Jardine House, Hong Kong

# GENERAL INFORMATION

---

## 1. Eligibility

Applicants must be under 25 years of age at the date of entry to any one of the Colleges or Universities referred to on page 1 and must:-

- (a) have reached an academic standard to qualify for entry to any one of such Colleges or Universities;
- (b) (i) be resident in Hong Kong or, in the opinion of the Trustees, have sufficient connection with Hong Kong to be properly regarded as Hong Kong applicants; or  
(ii) be resident in any of the countries in which Jardine Matheson Holdings Limited or its subsidiaries operate or have significant business interests;

N.B. Generally, applications will not be accepted from candidates whose parents have not resided in Hong Kong or other such relevant country for at least seven years prior to the proposed date of entry to University.

- (c) be in a satisfactory state of health; and
- (d) be single.

## 2. Basis of Selection

In making awards, the Scholarship Committee will take into account of not only academic achievement but also:-

- (a) personal qualities and character with particular regard to the extent to which the applicant has demonstrated exceptional qualities of leadership and fellowship;
- (b) achievements in non-curricular activities, including sports;
- (c) community involvement and activities; and
- (d) other attributes which, in the opinion of the Scholarship Committee, indicate that the applicant is likely to become an outstanding citizen with a high commitment to the performance of public duties and/or community involvement.

## 3. Value of Scholarships

- (a) Each Scholarship awarded will generally be sufficient to cover fees, tuition, the cost of necessary books and equipment, board and lodging (preferably on a living-in basis where this is available at the educational establishment in question), and reasonable living expenses and travel expenses to and from the chosen educational establishment at the beginning and at the end of the course in respect of which the Scholarship is awarded.
- (b) The Scholarship will include:-
  - (i) university tuition fees payable directly to the university;
  - (ii) college fees excluding board and lodging, payable directly to the college;

- 
- (iii) an annual stipend to be determined by the Trustees on a case by case basis to cover board and lodging and all other incidental expenses (subject to the discretion of the Trustees, the stipend will be payable in four instalments); and
  - (iv) a standard economy class airfare payable directly to the airline from the place of residence to the United Kingdom or other approved destination at the beginning of the Scholarship and for the return journey to the place of residence on completion of the Scholarship period.
- (c) In cases of financial hardship, the Trustees may, in their absolute discretion, make arrangements by way of supplemental awards, loans or such other means as they may think fit to assist Jardine Scholars in meeting their essential expenses.

#### **4. Method of Application**

Application forms are available from the Secretaries, The Jardine Foundation, G.P.O. Box 70, Hong Kong.

Applications must, in all instances, be addressed to the Secretaries of The Jardine Foundation and be submitted by a date to be announced by the Trustees. Subject to screening, as mentioned later in this section, the Secretaries will arrange for applications to be sent to the Scholarship Committee for consideration. Applications must not be addressed to any individual Scholarship Committee member.

Applications should be dealt with as follows:-

- (a) For applicants attending secondary school or an equivalent establishment, applications must be submitted through the school principal and be supported by a testimonial signed by the school principal recommending the applicant for a Scholarship. This testimonial shall also set out the applicant's academic record of examination results and any other relevant information including remarks which will assist the Scholarship Committee to satisfy themselves that the special qualities set out in '2. Basis of Selection' have been met.
- (b) In all other cases applications in Hong Kong must be submitted, together with references, through the principal of the secondary school, or the equivalent, which applicants last attended.
- (c) Include two recent passport-size photographs with application.
- (d) Applicants should have already applied through UCAS (Universities and Colleges Admissions Service) for entry to one of the Colleges or Universities referred to on page 1. They are required to notify the Secretaries as soon as they receive a firm or conditional offer either through UCAS or from the College/University itself.



---

#### **4. Method of Application (cont'd)**

The Scholarship Committee reserves the right at its discretion to approach any organization, establishment or individual to check the substance of all statements made by any applicant.

All applications are subject to screening by a pre-selection committee appointed by the Trustees and only those deemed suitable will be eligible for further consideration and interview by the Scholarship Committee. All decisions of the pre-selection committee and the Scholarship Committee are final and neither of such committees, nor any member thereof, will under any circumstances be required to explain to applicants or their representatives why any application has been accepted or declined or has not passed the pre-selection screening process.

Whilst the preliminary evaluation of each application will be based on the details submitted by applicants in writing, any final selection will require applicants to attend for a personal interview and no Scholarship will be awarded without such an interview.

#### **5. Condition**

The award of a Scholarship is conditional upon the candidate being selected for and taking up a place at one of the Colleges or Universities referred to on page 1. Since the Colleges or Universities make their own choice in admitting students, there is no guarantee of a place. The award of a Scholarship will not be confirmed by the Trustees until the candidate has been accepted by one of the Colleges or Universities referred to on page 1.

#### **6. Regulations Governing Scholarships**

- (a) Jardine Scholars must conduct themselves in a proper manner throughout the periods for which the Scholarships are awarded and must use their utmost endeavours to complete their studies and achieve the best possible results in any tests or examinations which are part of the course.
- (b) In the event a Jardine Scholar plans to change the course originally nominated when the Scholarship was awarded, the Trustees must be so advised and agree in writing to such a change.
- (c) Jardine Scholars must at all times comply with the regulations of the universities or educational establishments in which they are studying.
- (d) Jardine Scholars shall not accept without consent of the Trustees any employment during their Scholarship periods other than short term employment during vacations.
- (e) Jardine Scholars shall not without the consent of the Trustees be attached to the Embassy, Legation or High Commission or other diplomatic or governmental office of any country in the United Kingdom or elsewhere during the tenure of the Scholarships.

- 
- (f) The Trustees reserve the right to terminate the Scholarship at any time for reasons of unsatisfactory conduct, breaches of university regulations, breaches of the regulations of the award, failure to make satisfactory progress, illness or conviction for any criminal offence on the part of the Jardine Scholar.
  - (g) The Trustees reserve the right to terminate or amend the terms of the Scholarship in the case of a holder who marries during the tenure of the Scholarship prior to the end of the Scholarship period.
  - (h) The Trustees reserve the right to terminate or amend the terms of the Scholarship for any reasons which they think fit without having to account therefor.
  - (i) Jardine Scholars may not accept any other Scholarship either in name or in substance during the term of the Scholarship from The Jardine Foundation.

## 7. Insurance

All insurance will be the responsibility and for the account of the students concerned, but it is recommended that students should consider accident, medical and personal effects insurance and/or any other insurance which they may themselves consider to be appropriate.

## 8. Definitions

The expressions used above shall have the following meanings:-

**‘The Company’** means Jardine Matheson Holdings Limited or any succeeding company, which upon any amalgamation, reconstruction or otherwise succeeds or otherwise continues to carry on the business of Jardine Matheson Holdings Limited;

**‘Jardine Scholar(s)’** means a candidate or candidates chosen by the Trustees for the award of a Scholarship or Scholarships to a university, college or other educational establishment;

**‘Scholarship(s)’** means a scholarship or scholarships awarded to a Jardine Scholar or Jardine Scholars pursuant to a Deed of Trust dated 18th April 1991 and any amendments thereto;

**‘Scholarship Committee’** means a Committee appointed by the Company pursuant to Clause 5 of the Trust Deed;

**‘The Trustees’** means Jardine Matheson International Services Limited, a corporation incorporated in Bermuda, or other Trustees for the time being of the Trust Deed; and

**‘Trust Deed’** means a Deed made on 18th April 1991 between the Company and the Trustees establishing The Jardine Foundation in Bermuda succeeding The Jardine Foundation established under the laws of Hong Kong on 30th June 1982.

# SCHOLARS' EXPERIENCE

The Jardine Foundation has now granted awards to over 100 students to study at Oxford and Cambridge Universities. Today, most of the Jardine Scholars have become established in their careers or pursued higher academic studies. Below are thoughts from some Jardine Scholars:

*Oxford is a place of inspiring domes and spires. Trinity was as ever charming as in my dreams. Memories may have faded away. Feelings will never.*

*For students currently studying at the colleges, you are now in an enviable moment enjoying the fantastic atmosphere and learning environment. Whatever you may decide to do after graduation, you will experience new people and work. Your knowledge and feelings about Oxford or Cambridge, however, will not cease right there.*

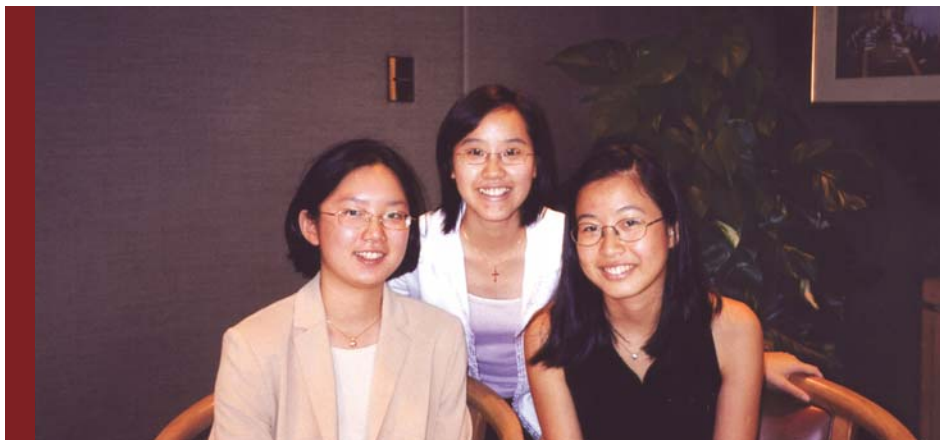
*One gets wiser, hopefully, as one gets older. You will learn about things related to Oxford that you will never pay attention to as a student. I might not adore as much the riches of history that Oxford provided as I do now. Knowledge accumulated over the years after the college helped me to know more the place. Every additional piece of new knowledge adds to my feeling and adoration of the place.*

*You may now be enjoying your college life. I can assure you, though, these years of college life will have life long affections on you. The memories and reflections will forever enrich and enlighten you.*

Written by **Desmond Kai Yuen CHAN**  
Trinity College, Oxford University  
Scholar from Hong Kong (1985)

*Education is as much about exploring life's possibilities and finding one's philosophies and direction as it is about gaining information and facts from books and lectures. From what I have seen, there is no better way to start your adult years than doing it in Cambridge, where you can have the full spectrum from the best facilities, best exposure to high achievers and their ideas, and most importantly the greatest freedom in which to develop independent thinking. The Jardine Scholarship makes those privileged three years even more so for all the scholars. Go. Explore.*

Written by **Eric Chun Yu WONG**  
Downing College, Cambridge University  
Scholar from Hong Kong (1988)



Jardine Scholars in 2001 from left: Queenie Lau, Gloria Tam and Eleanor Fung.

*Jardine Scholars at the annual lunch hosted by the Directors of Matheson & Co., Ltd in the United Kingdom in December 2005. From left: Davy Kurniawan, Albert Cheung, Jonathan Allcock, Bianca Chan, Serene Chew, Caleb Liu, David Ching, Yi Jin Liew, Josephine Hong Fan, Yue Zhou, Zhizhen Zhao and Chris Ko.*



*As the interview with Mr. Neil McNamara of Jardine Matheson ended, he gave me an opportunity to ask him questions about the Jardine Foundation. “Why on earth would the Foundation pay for someone’s education and not expect anything in return?” To which he replied “We only ask that you be a contribution to society in the best way you can.”*

*This message, this ‘Jardine cares’, remained with me throughout University. The thoughts just flitted by – will I be a contribution to society? Can I give back to society? I did not know, but I wanted to try. In the summer of 2001, I signed up for the World Vision UK Students Challenge to spend five weeks working with the poor in rural part of Ghana. I had to raise a substantial amount of money for this trip. So I wrote to Jardines once again, wondering if, having spent so much money on me, they would care to give more.*

*They did, and helped make my trip possible.*

*Thank you, Jardines. Thanks for daring to invest in the risky asset I am.*

Written by **Yin Ying TAN**  
Exeter College, Oxford University  
Scholar from Singapore (1999)

*Studying in Cambridge was hard work and can be stressful at times, but at the end, you really appreciate your effort so much more and come away slightly wiser.*

*It’s been a privilege to be a Jardine Scholar. I know I wouldn’t have done as many things as I had or enjoyed myself as much without the financial backing of the Foundation. But not only that, the scholarship is unique from all others in the sense that it also provides something intangible – it’s been very supportive and helpful towards all the scholars. The dinners that all the current Jardine Scholars have at the beginning of term and on Chinese New Year really add a personal touch. Also, Jardines is a big help when it’s time to get a summer job! It’s always nice to know that there are people who are interested and looking out for your well being.*

Written by **Michael Chin Huat KHAW**  
Trinity College, Cambridge University  
Scholar from Malaysia (2000)

*Having been in Cambridge for the past few years, I have grown to love this place and the way of living and learning here. For the first time in my life, I have been living in a foreign country instead of just visiting. What I have experienced is surely having a positive influence on my present and future life.*

*I can still recall on the first night I arrived in Cambridge, I was overwhelmed by the unknown environment and the extreme quietness in my house. But very soon, friendly neighbours came to knock at my door and offered to show me around Magdalene College.*

*The course is very intensive as we have relatively shorter terms and the fact that I have to read and write in a foreign language makes the workload even heavier for me, but I have gradually got used to the way of learning here and have been making progress through the years.*

*Life in Cambridge made a lot of differences from my previous experience.*

Written by **Josephine Hong FAN**  
Magdalene College, Cambridge University  
Scholar from mainland China (2005)

# CAMBRIDGE UNIVERSITY

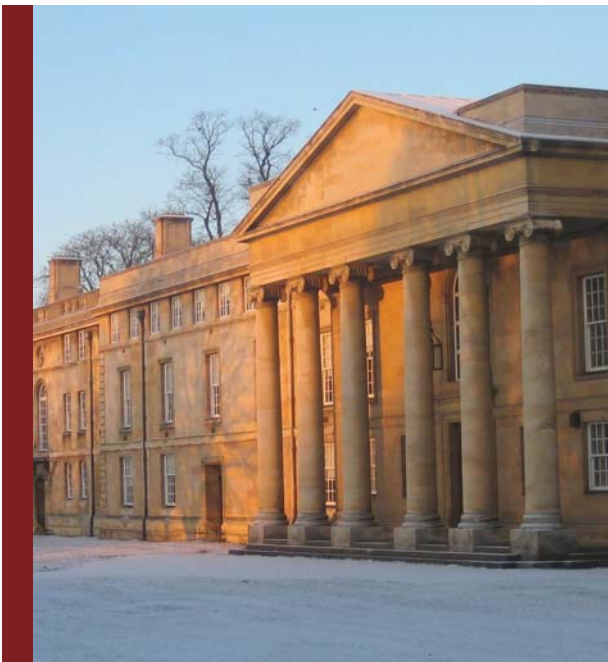
---

## | DOWNING COLLEGE |

Downing College was founded in 1800; it is both the newest of the 'old' colleges and the oldest of the 'new'. Its architectural heritage consists of buildings in Classical style set in a spacious landscape of lawns and gardens that form a harmonious setting for intense academic work and participation in the extensive range of activities which comprise the rewarding life of the College. Although close to the City centre and many University faculties and departments, Downing preserves a sense of tranquillity.

Reading for a degree at Downing College provides outstanding opportunities for students to fulfil the high intellectual potential for which they are selected. Downing is committed to excellence and aims for the highest standards of academic attainment, teaching, pastoral support, accommodation and facilities for social and cultural activities. In assessing applications, the College chooses those candidates who have the potential to make the most of the educational opportunities which Cambridge and Downing have to offer.

The College can accommodate all undergraduates for three years within its grounds, and also house some students studying for a fourth year. All rooms have internet connections and many have en-suite bathrooms. There is an excellent library, as well as a computer room, gym, sports ground, boathouse and a lecture hall, which is also a concert and theatre venue.



The great majority of the Fellows are actively involved in teaching, research, and running the College. In terms of student numbers, Downing is medium-sized, so that the academic community combines variety with friendliness. Downing is a wonderful College that provides the opportunity for an excellent education and teaching experience in Cambridge.



# CAMBRIDGE UNIVERSITY

---

## | MAGDALENE COLLEGE |

Magdalene College is one of the smaller Cambridge colleges, with just over 300 undergraduate students. The College is characterized by its contrasting courts and varying architecture.

First court, with its medieval, red-brick courts, and Second court, with the landmark Pepys building make up the East side of Magdalene street. The 'village' on the West side of Magdalene street houses the majority of Magdalene's residents today centred around three main courts. The open plan campus of the village was developed over a period of half a century and is characterized by its miscellany of small buildings and intermingling of architectural styles. The lively and informal courts of Benson, Mallory and Buckingham make Magdalene truly a unique place to live and study.

The College culture at Magdalene is one of its defining characteristics. Students take part in a number of extra-curricular activities. Sport is a big part of the College, with Rowing, Rugby and Football among the popular sports at Magdalene. Students at Magdalene also participate in a wide range of extra curricular and community activities, both University wide and College based.

College accommodation is provided for all undergraduates throughout their studies, either in the College itself or areas in the vicinity.

All College housing is in close proximity to College facilities, such as the porter's lodge, library, buttery and main hall. Other College facilities include a squash court, weights room and music practise rooms, as well as the JCR (Junior Common Room) facilities such as a TV room and the ever popular pool room.



In general, Magdalene is a lively and friendly college. Its strong sense of community and its approachability make studying at Magdalene a unique experience.

# CAMBRIDGE UNIVERSITY

---

## | PETERHOUSE |

Peterhouse was founded in 1284 by Hugo de Balsham, Bishop of Ely, and is the smallest and oldest college in the University. It has a long tradition of excellence in both the Sciences and the Humanities, and prides itself on its diverse yet highly cohesive student body where people from any background can feel at home and thrive.

As the smallest college, Peterhouse has approximately 270 undergraduates, 125 graduate students, and 35 Fellows, and typically admits around 80 undergraduates each year. Being the oldest college, it possesses a real sense of history — every day students can eat in the beautiful 13th Century Hall, used continuously since the earliest days of the College and University; they use and live in buildings created in every subsequent century. Peterhouse is, however, well able to balance its tradition with modernity. Today, for instance, its computer facilities are top-rate and every room in College, regardless of the age of the building, has an Internet connection. Individual student rooms and the recently-extended College Library are considered amongst the very best in the University; and, though Peterhouse is small in size, it is large in area, with beautiful gardens very close to all City facilities yet off the main tourist track.

The small size of Peterhouse promotes closeness and friendliness between students and Fellows across subject boundaries. The graduate and undergraduate population of the College is an ever-changing mix of students from all educational and cultural

backgrounds. Despite its small size, Peterhouse is widely represented in University sports and societies. Given its diverse but tight-knit and supportive community, new students from all over the world quickly feel welcome and at home, regardless of background.

In summary, Peterhouse is an exciting and friendly place to which the brightest students, from all cultural backgrounds and many nations, naturally gravitate.



# CAMBRIDGE UNIVERSITY

---

## | TRINITY COLLEGE |

Trinity College was founded by Henry VIII in 1546, and is the largest college in Cambridge. Trinity has flourished and grown, and is now a home to around 600 undergraduates, some 300 graduates and over 170 Fellows – the College's senior members.

Trinity exists to give its members a rewarding, richly resourced, and intellectually inspiring place in which to pursue their education and research. Princes, spies, poets and prime-ministers have all studied at Trinity, and members of the College go on to a very wide range of professions and careers after taking degrees in all the subjects the University offers. College life is lively and diverse, with students coming from all over the world as well as from all kinds of different schools in the United Kingdom.

Life at Trinity has changed greatly over the centuries, but the strong academic tradition has been maintained. In science and economics, for example, Trinity has provided 32 Nobel Prizewinners since they were first awarded in 1901. Today the College is part of a forward-looking University renowned for the excellence of its teaching and research.

Accommodation is provided in College for the full length of the undergraduate course. Some of Trinity's rooms are old and grand, with lofty ceilings and oak beams; others are of modern design.



The College has clubs for bridge, chess, photography, sailing, climbing, aerobics, and other interests. There is also an obscurely named but old-established debating society – The Magpie & Stump. Trinity's Music Society is one of the largest and most active college societies in the University. There are regular programmes of recitals, chamber concerts, and other musical events.

At Old Field, a few minutes' walk from the Great Gate, Trinity has its own facilities for football, rugby, cricket and netball. Other sports facilities are available to members of the College. College's boats compete under the title of First & Third Trinity in the May races, Henley and other regattas.



# OXFORD UNIVERSITY

---

## | EXETER COLLEGE |

As the fourth college to be founded at Oxford, Exeter is one of the University's hidden jewels. It is well known for its long history, beautiful architecture, and its friendly, tranquil atmosphere. As one of the three 'Turl Street Colleges', it is situated right in the centre of Oxford. The Fellows' Garden, open to all members of the College, is one of the most beautiful in the city and one of the nicest places to sit with a book, or just sit, or play croquet in summer.

The College has about 350 undergraduates and 200 graduates. It also receives each year 26 students from Williams College in the United States, giving it a truly international feel. The undergraduates all live on the main College site in their first year. Most graduates live in Exeter House, a ten-minute bicycle ride away.

The College has 42 Fellows, many of whom undertake undergraduate and graduate teaching. Exeter College is an enthusiastic supporter of the tutorial system, which gives students close and intensive teaching and supervision, often by senior academics. The Library is open 24 hours a day for College members during term, and it has some 40,000 volumes on its open shelves, available for loans over a long time period, and also a similar number of antiquarian books and manuscripts on stack.

Exeter has had a number of important alumni over the years, including JRR Tolkien, author of 'Lord of the Rings', and Qian Zhongshu, author of 'Fortress Besieged', who

was an Exeter postgraduate student in 1935-37. Many well-known public figures come to Exeter College to give lectures and seminars, providing an opportunity for small groups of students to meet them. Philip Pullman, whose 'Dark Materials' trilogy is being made into a Hollywood film, is an alumnus and often visits the College.

The College has a large number of clubs and societies, founded and run by the students. Students play football and cricket, and many row, often for the first time. The College also has a strong musical tradition. Its 19th century Chapel has one of the best mixed-voice choirs in Oxford, and the College also has a number of bands and an annual jazz concert.



# OXFORD UNIVERSITY

---

## | ORIEL COLLEGE |

Founded in 1326 by King Edward II, Oriel is the fifth oldest of Oxford's colleges. In terms of student numbers, Oriel is one of the smaller colleges. It has approximately 300 undergraduates studying a wide variety of courses in arts and sciences, and some 100 postgraduate or research students.

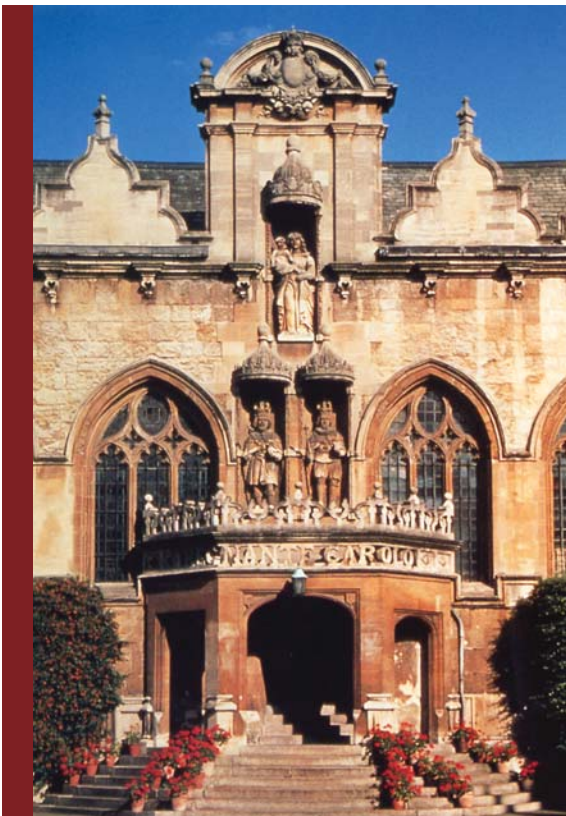
All of its undergraduates live in College accommodation if they wish, and most of this accommodation is on the main site of the College. This fosters a strong sense of community within the College, and Oriel is known for its friendly, welcoming atmosphere.

Oriel places great emphasis on the intellectual development of its students. It has an impressive library of 100,000 volumes. It is open 24 hours a day, and is exceptionally well funded for the purchase of new books. Students are also welcome to work in

the beautiful Senior Library, which contains old and rare books, but the College also has facilities for all major sports at its own sports ground.

Oriel has a wide range of clubs and societies. It is strong in both music and drama; and also has a reputation for sporting achievement, with the rowing teams in particular enjoying an exceptional record of success.

Oriel comprises an attractive set of historic buildings in the very centre of Oxford, and takes students in all major subjects.



# OXFORD UNIVERSITY

---

## | QUEEN'S COLLEGE |

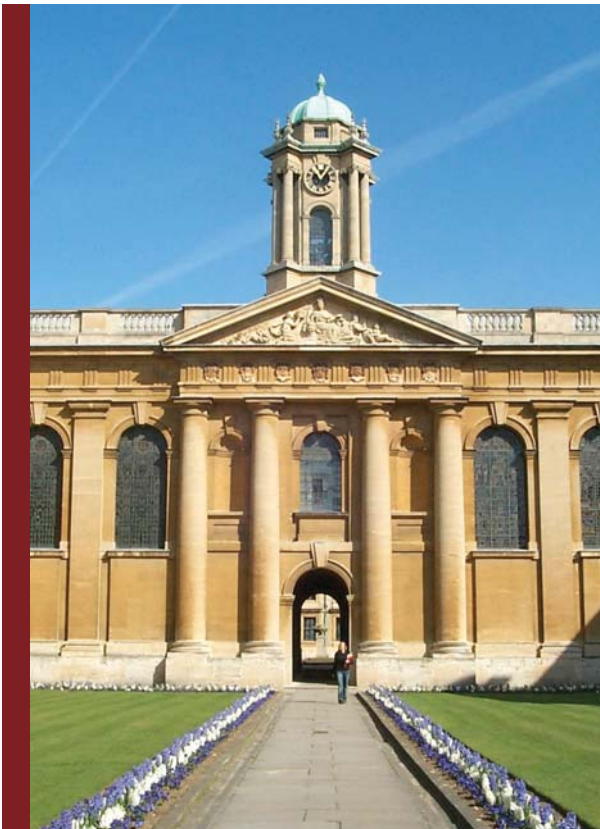
The Queen's College was founded in 1341, its students now come from all over the world and from very diverse backgrounds. The existing buildings, which date mostly from the early 18th century, are truly beautiful, and the College has a unique and friendly atmosphere. The library is extremely well stocked with modern texts, but also contains a priceless collection of ancient manuscripts.

Queen's is committed to making sure that each student is given all the help and support they need to make the most of their time in Oxford. Queen's usually admits 130 undergraduates each year in a wide variety of subjects. The small size of the College means that there are only ever a handful of students taking any particular subject, and the tutors can afford to take real care in supporting the students over the years of their degree.

College societies are created by the students themselves, and successive generations of Queen's students have proved ever more inventive in entertaining themselves.

There are, though, some constant features: drama is always strong, and the Eglesfield Players (named after the College's founder) stage regular productions. Music is also a strength: the chapel choir is one of the most highly regarded mixed choirs in Oxford, and the Frobenius organ has attracted performers of international fame. The undergraduate community never fails to produce talented singers and instrumentalists. The Eglesfield Musical Society promotes weekly lunchtime concerts in the chapel during term.

Sport has always flourished at Queen's, and both men's and women's teams have enjoyed considerable success in university competitions in recent years.



# OXFORD UNIVERSITY

---

## | TRINITY COLLEGE |

Located along Broad Street in the heart of Oxford, Trinity College is not only conveniently near the world-renowned Bodleian Library and the Radcliffe Science Library, but also the University's many science departments. Though small in terms of student numbers, the College occupies an exceptionally spacious site with some of the most beautiful gardens and lawns in Oxford.

The College is also home to stunning buildings, such as the Chapel, that dates as far back as the late 17th century. All students dine in the College Hall, which is often said to have the best food in the University. The Library is both well-equipped and well-funded, with an approachable Librarian ready to handle any requests for new books.

The subjects studied at the College are varied, and Trinity is attractive to students pursuing both arts or science subjects. The strength of its teaching in the sciences and its proximity to the University's science area make it a very good choice for engineering, chemistry and medicine students. At the same time, Trinity College has maintained its traditional excellence in the arts and social sciences, in subjects such as Classics, English, History, Law and Philosophy, Politics and Economics.



The small student numbers contribute to the friendly atmosphere within Trinity, and the College offers facilities such as the Junior and Middle Common Rooms (for undergraduates and graduates respectively), and the Beer Cellar for the students' use. A great number of teams and societies also abound. Popular sports and games include rowing, rugby, football and cricket, and provision is made for such activities in the form of the Sports Ground that is located about 1.5 miles from the College, and the boathouse by the river. In the area of artistic pursuits, Trinity College has a large chamber orchestra. Also of note are the Trinity Players, who stage at least two productions a year, the summer one in the gardens being particularly popular.

Jardine Matheson Limited  
G.P.O. Box 70  
Hong Kong

Incorporated in Bermuda with limited liability