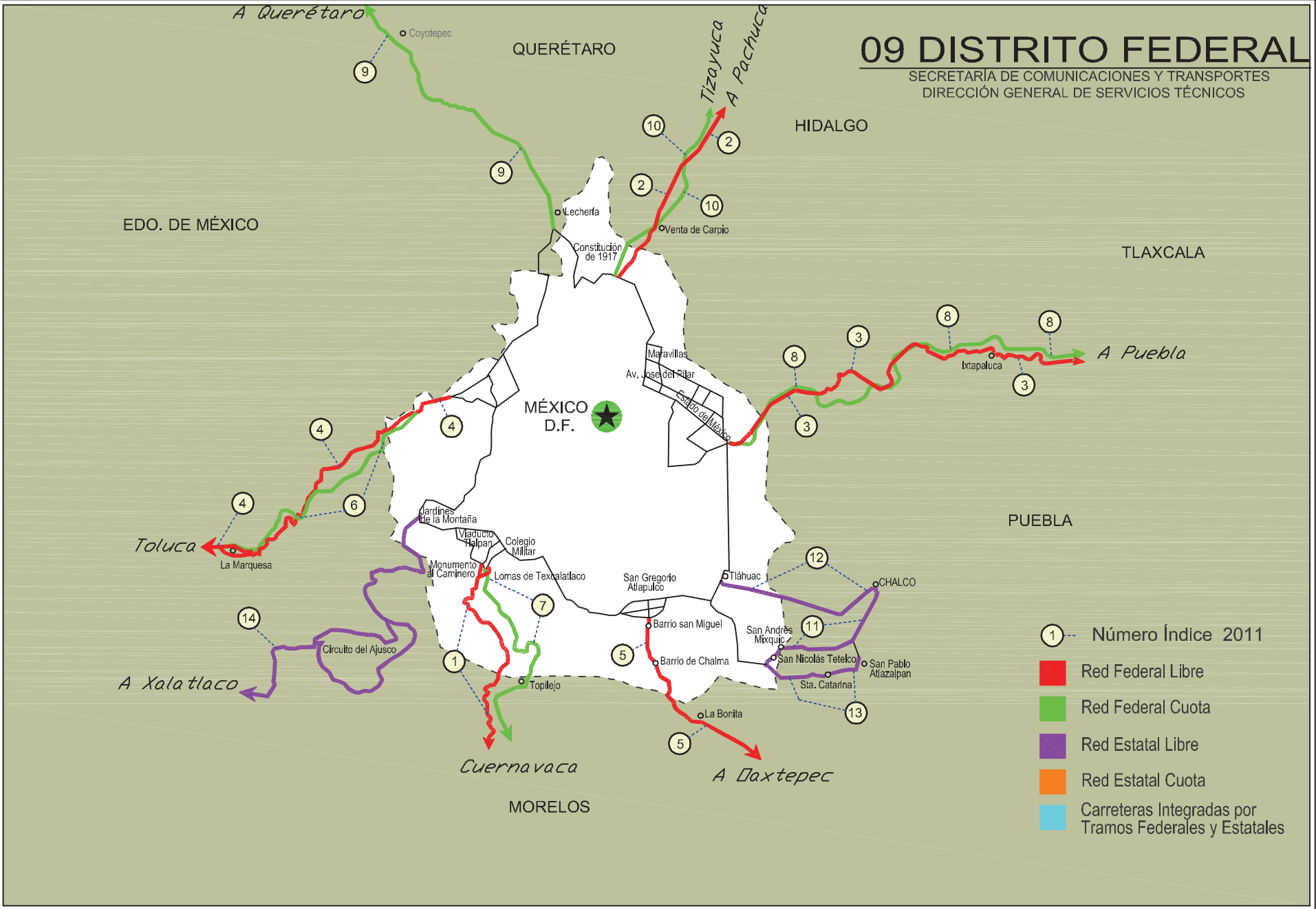


DISTRITO FEDERAL

No. INDICE	CARRETERA	RUTA
---RED FEDERAL LIBRE---		
1	MEXICO - CUERNAVACA (LIBRE)	MEX-095
2	MEXICO - PACHUCA (LIBRE)	MEX-085
3	MEXICO - PUEBLA (LIBRE)	MEX-150
4	MEXICO - TOLUCA	MEX-015
5	SAN GREGORIO - OAXTEPEC	MEX-142
---RED FEDERAL DE CUOTA---		
6	CONSTITUYENTES - LA MARQUESA (CUOTA)	MEX-015D
7	MEXICO - CUERNAVACA (CUOTA)	MEX-095D
8	MEXICO - PUEBLA (CUOTA)	MEX-150D
9	MEXICO - QUERETARO (CUOTA)	MEX-057-MEX-057D
10	MEXICO - TIZAYUCA (CUOTA)	MEX-085D
---RED ESTATAL LIBRE---		
11	CHALCO - MIXQUIC	EM-DF
12	CHALCO - TLAHUAC	EM-DF
13	T. C. (MEXICO - MIXQUIC) - SAN PABLO ATLAZALPAN	EM-106-DF
14	XALATLACO - EL AJUSCO	EM-DF

09 DISTRITO FEDERAL

SECRETARÍA DE COMUNICACIONES Y TRANSPORTES
DIRECCIÓN GENERAL DE SERVICIOS TÉCNICOS



DISTRITO FEDERAL

3 CARR: MEXICO - PUEBLA (LIBRE)

CLAVE: 00449

RUTA: MEX-150

AÑO: 2010

LUGAR	ESTACION				CLASIFICACION VEHICULAR EN PORCIENTO								COORDENADAS						
	KM	TE	SC	TDPA	A	B	C2	C3	T3S2	T3S3	T3S2R4	OTROS	A	B	C	K'	D	LATITUD	LONGITUD
MEXICO	0.00																		
LIM. EDOS. TERM. DF. PPIA. MEX.	18.66																		
T. DER. CHALCO	28.85	1	1	29749	77.3	5.2	5.2	3.8	4.3	3.0	0.7	0.5	77.3	5.2	17.5	0.061	0.514	19.310998	-98.904164
T. DER. CHALCO	28.85	1	2	28130	77.1	5.1	5.0	3.7	4.7	3.4	0.6	0.4	77.1	5.1	17.8	0.067	0.514	19.310998	-98.904164
T. DER. CHALCO	28.85	3	1	10498	76.7	5.0	5.4	3.4	3.6	3.7	1.7	0.5	76.7	5.0	18.3	0.070	0.534	19.312461	-98.896713
T. DER. CHALCO	28.85	3	2	10299	76.8	4.9	5.3	3.3	3.5	3.9	1.8	0.5	76.8	4.9	18.3	0.079	0.534	19.312461	-98.896713
IXTAPALUCA	31.06	3	0	26955	77.4	5.1	6.5	2.9	3.9	2.9	1.0	0.3	77.4	5.1	17.5	0.067	0.513	19.316135	-98.873811
T. DER. C. MEXICO - PUEBLA (CUOTA) (RIO FRIO)	62.06	1	0	5058	79.8	6.2	5.4	1.7	3.1	2.0	1.1	0.7	79.8	6.2	14.0	0.088	0.563	19.347284	-98.673345
T. DER. C. MEXICO - PUEBLA (CUOTA) (RIO FRIO)	62.06	3	0	3591	77.4	6.1	5.6	3.3	4.1	1.9	0.8	0.8	77.4	6.1	16.5	0.065	0.525	19.352991	-98.663091
LIM. EDOS. TERM. MEX. PPIA. PUE.	62.98																		
SAN MARTIN TEXMELUCAN	70.00	1	0	11140	82.4	5.3	4.9	2.2	2.1	1.7	0.8	0.6	82.4	5.3	12.3	0.059	0.505	19.304105	-98.455175
X. C. MEXICO - PUEBLA (CUOTA)	74.10	3	0	16458	80.5	5.4	6.3	2.4	2.2	2.0	0.9	0.3	80.5	5.4	14.1	0.060	0.508	19.265670	-98.430821
HUEJOTZINGO	88.00	1	0	11788	81.4	5.4	5.2	1.9	3.7	1.3	0.7	0.4	81.4	5.4	13.2	0.071	0.506	19.174764	-98.414240
HUEJOTZINGO	88.00	3	0	13097	81.2	5.3	5.4	1.8	3.4	1.5	0.8	0.6	81.2	5.3	13.5	0.065	0.504	19.148787	-98.397997
T. IZQ. AEROPUERTO	92.80	1	1	6320	81.6	5.5	5.2	1.9	3.2	1.3	0.9	0.4	81.6	5.5	12.9	0.061	0.501	19.136336	-98.377211
T. IZQ. AEROPUERTO	92.80	1	2	6341	81.0	5.6	5.1	1.9	3.3	1.7	1.0	0.4	81.0	5.6	13.4	0.060	0.501	19.136407	-98.377151
T. DER. CHOLULA	101.00	1	0	17845	81.1	5.2	5.0	1.8	4.4	1.0	0.9	0.6	81.1	5.2	13.7	0.069	0.507	19.074140	-98.319047
T. DER. CHOLULA	101.00	3	1	12616	81.4	5.4	5.8	2.2	2.4	1.4	0.8	0.6	81.4	5.4	13.2	0.070	0.506	19.070026	-98.312313
T. DER. CHOLULA	101.00	3	2	12293	82.2	5.1	5.3	2.3	2.7	1.1	0.7	0.6	82.2	5.1	12.7	0.067	0.506	19.070093	-98.312276
PUEBLA	131.00																		

4 CARR: MEXICO - TOLUCA

CLAVE: 00447

RUTA: MEX-015

AÑO: 2010

LUGAR	ESTACION				CLASIFICACION VEHICULAR EN PORCIENTO								COORDENADAS						
	KM	TE	SC	TDPA	A	B	C2	C3	T3S2	T3S3	T3S2R4	OTROS	A	B	C	K'	D	LATITUD	LONGITUD
MEXICO	0.00																		
ENT. CONSTITUYENTES Y REFORMA	12.84	3	1	74041	81.0	5.3	4.4	1.1	3.6	3.1	1.0	0.5	81.0	5.3	13.7	0.065	0.500	19.385791	-99.247675
ENT. CONSTITUYENTES Y REFORMA	12.84	3	2	74090	80.7	5.5	4.6	0.9	3.7	2.8	1.1	0.7	80.7	5.5	13.8	0.066	0.500	19.385783	-99.247673
T. DER. CUAJIMALPA (1º ACCESO)	20.56	1	1	34095	77.2	6.0	5.6	0.7	6.7	2.3	0.8	0.7	77.2	6.0	16.8	0.060	0.515	19.363641	-99.280896
T. DER. CUAJIMALPA (1º ACCESO)	20.56	1	2	35309	78.0	6.5	5.9	1.0	5.2	2.4	0.5	0.5	78.0	6.5	15.5	0.057	0.515	19.363641	-99.280891
T. IZQ. DESIERTO DE LOS LEONES	23.96	1	1	29135	78.6	6.1	5.3	0.5	5.4	2.5	0.7	0.9	78.6	6.1	15.3	0.067	0.503	19.337004	-99.311530
T. IZQ. DESIERTO DE LOS LEONES	23.96	1	2	28818	75.5	6.8	6.3	0.8	5.9	3.0	0.9	0.8	75.5	6.8	17.7	0.068	0.503	19.337048	-99.311540
LIM. EDOS. TERM. D.F. PPIA. MEX.	33.44																		
T. DER. HUIXQUILUCAN	33.98	1	1	23931	78.4	6.2	5.4	0.8	5.2	2.6	0.8	0.6	78.4	6.2	15.4	0.059	0.501	19.295736	-99.359220
T. DER. HUIXQUILUCAN	33.98	1	2	24021	78.3	6.7	6.1	0.9	4.2	2.7	0.6	0.5	78.3	6.7	15.0	0.061	0.501	19.295733	-99.359222

DISTRITO FEDERAL

4 CARR: MEXICO - TOLUCA

CLAVE: 00447

RUTA: MEX-015

AÑO: 2010

LUGAR	ESTACION				CLASIFICACION VEHICULAR EN PORCIENTO								COORDENADAS						
	KM	TE	SC	TDPA	A	B	C2	C3	T3S2	T3S3	T3S2R4	OTROS	A	B	C	K'	D	LATITUD	LONGITUD
X. C. AMOMOLULCO - STGO. TIANGUISTENCO	47.26	1	1	34526	83.4	2.9	4.1	0.8	5.0	2.4	0.8	0.6	83.4	2.9	13.7	0.078	0.537	19.282485	-99.479214
X. C. AMOMOLULCO - STGO. TIANGUISTENCO	47.26	1	2	29793	81.0	3.4	5.2	1.0	4.8	2.6	1.3	0.7	81.0	3.4	15.6	0.078	0.537	19.281860	-99.480390
T. DER. LERMA - IZQ. SAN PEDRO TULTEPEC	51.71	1	1	31337	79.1	3.9	5.4	1.0	5.2	3.2	1.6	0.6	79.1	3.9	17.0	0.085	0.501	19.284045	-99.504930
T. DER. LERMA - IZQ. SAN PEDRO TULTEPEC	51.71	1	2	31204	77.9	3.7	4.7	0.8	6.3	4.6	1.3	0.7	77.9	3.7	18.4	0.084	0.501	19.280176	-99.503445
T. IZQ. SAN MATEO ATENCO (ALTA)	52.00	3	1	36005	78.1	3.8	5.2	0.1	7.0	4.2	1.0	0.6	78.1	3.8	18.1	0.080	0.502	19.285711	-99.543275
T. IZQ. SAN MATEO ATENCO (BAJA)	52.00	3	1	11553	78.1	3.6	5.9	0.7	7.0	2.4	1.8	0.5	78.1	3.6	18.3	0.088	0.507	19.285461	-99.533183
T. IZQ. SAN MATEO ATENCO (BAJA)	52.00	3	2	11239	79.0	3.4	6.4	1.0	5.9	2.8	1.0	0.5	79.0	3.4	17.6	0.087	0.507	19.285461	-99.533183
T. IZQ. SAN MATEO ATENCO (ALTA)	52.00	3	2	36278	81.1	3.5	5.8	0.6	5.6	1.8	1.0	0.6	81.1	3.5	15.4	0.079	0.502	19.285711	-99.543275
X. C. LIBRAMIENTO DE TOLUCA (BAJA)	62.20	1	1	11237	76.7	4.2	6.1	1.4	5.4	4.5	1.2	0.5	76.7	4.2	19.1	0.093	0.503	19.288353	-99.617474
X. C. LIBRAMIENTO DE TOLUCA (ALTA)	62.20	1	1	33057	76.3	3.9	5.9	0.5	6.6	4.6	1.5	0.7	76.3	3.9	19.8	0.085	0.500	19.287956	-99.617384
X. C. LIBRAMIENTO DE TOLUCA (BAJA)	62.20	1	2	11380	80.8	3.9	4.9	0.9	4.8	3.8	0.4	0.5	80.8	3.9	15.3	0.084	0.503	19.288353	-99.617474
X. C. LIBRAMIENTO DE TOLUCA (ALTA)	62.20	1	2	33111	77.2	4.1	5.8	0.1	6.9	4.3	1.1	0.5	77.2	4.1	18.7	0.089	0.500	19.287956	-99.617384
TOLUCA	66.00																		

5 CARR: SAN GREGORIO - OAXTEPEC

CLAVE: 00901

RUTA: MEX-142

AÑO: 2010

LUGAR	ESTACION				CLASIFICACION VEHICULAR EN PORCIENTO								COORDENADAS						
	KM	TE	SC	TDPA	A	B	C2	C3	T3S2	T3S3	T3S2R4	OTROS	A	B	C	K'	D	LATITUD	LONGITUD
SAN GREGORIO	0.00	3	0	8496	93.0	1.5	5.0	0.4	0.1	0.0	0.0	0.0	93.0	1.5	5.5	0.056	0.505	19.244804	-99.054653
X. C. MILPA ALTA - SAN LORENZO TLACOYUCAN	9.00	3	0	6949	93.3	1.4	4.8	0.4	0.1	0.0	0.0	0.0	93.3	1.4	5.3	0.067	0.507	19.180138	-99.029136
LIM. EDOS. TERM. D.F. PPIA. MEX.	18.80																		
LIM. EDOS. TERM. MEX. PPIA. MOR.	28.50																		
T. DER. SAN FELIPE NERI	33.80	1	0	4115	93.1	1.4	5.0	0.4	0.1	0.0	0.0	0.0	93.1	1.4	5.5	0.065	0.503	19.035434	-98.941887
T. DER. TLALNEPANTLA	40.50	3	0	5075	92.8	1.5	5.2	0.4	0.1	0.0	0.0	0.0	92.8	1.5	5.7	0.060	0.501	19.004422	-98.990278
TLAYACAPAN	48.50	3	0	6507	92.8	1.5	5.2	0.4	0.1	0.0	0.0	0.0	92.8	1.5	5.7	0.063	0.501	18.939974	-98.974432
T. DER. YAUTEPEC	53.00	3	0	11526	92.9	1.6	5.0	0.4	0.1	0.0	0.0	0.0	92.9	1.6	5.5	0.063	0.506	18.919497	-98.970495
OAXTEPEC	56.00																		

6 CARR: CONSTITUYENTES - LA MARQUESA (CUOTA)

CLAVE: 00446

RUTA: MEX-015D

AÑO: 2010

LUGAR	ESTACION				CLASIFICACION VEHICULAR EN PORCIENTO								COORDENADAS						
	KM	TE	SC	TDPA	A	B	C2	C3	T3S2	T3S3	T3S2R4	OTROS	A	B	C	K'	D	LATITUD	LONGITUD
T. C. MEXICO - TOLUCA (LIBRE) (PUENTE CONAFRUT)	0.00	3	1	27621	91.7	5.9	1.4	0.4	0.3	0.1	0.2	0.0	91.7	5.9	2.4	0.067	0.502	19.380635	-99.251119
T. C. MEXICO - TOLUCA (LIBRE) (PUENTE CONAFRUT)	0.00	3	2	27446	92.6	5.2	1.2	0.4	0.3	0.1	0.2	0.0	92.6	5.2	2.2	0.069	0.502	19.380683	-99.251159
CASETA DE COBRO SANTA FE	3.60	1	0	54270	92.2	5.5	1.3	0.4	0.3	0.1	0.2	0.0	92.2	5.5	2.3			19.363393	-99.267326

DISTRITO FEDERAL

6 CARR: CONSTITUYENTES - LA MARQUESA (CUOTA)

CLAVE: 00446

RUTA: MEX-015D

AÑO: 2010

LUGAR	ESTACION				CLASIFICACION VEHICULAR EN PORCIENTO								COORDENADAS						
	KM	TE	SC	TDPA	A	B	C2	C3	T3S2	T3S3	T3S2R4	OTROS	A	B	C	K'	D	LATITUD	LONGITUD
CASETA DE COBRO CONTADERO	9.40	1	0	40981	89.7	7.3	1.7	0.5	0.4	0.1	0.3	0.0	89.7	7.3	3.0			19.335817	-99.311209
CASETA DE COBRO LA VENTA	10.00	1	0	38135	89.1	7.8	1.8	0.5	0.4	0.1	0.3	0.0	89.1	7.8	3.1			19.332891	-99.314468
CASETA DE COBRO LA VENTA	10.00	1	1	19019	88.6	8.1	2.0	0.5	0.4	0.1	0.3	0.0	88.6	8.1	3.3	0.079	0.504	19.335120	-99.308593
CASETA DE COBRO LA VENTA	10.00	1	2	18710	88.7	8.3	1.7	0.5	0.4	0.1	0.3	0.0	88.7	8.3	3.0	0.074	0.504	19.335110	-99.308588
CASETA DE COBRO LA VENTA	10.00	2	0	54875	89.3	6.2	2.1	0.7	1.0	0.2	0.4	0.1	89.3	6.2	4.5			19.332891	-99.314468
CASETA DE COBRO LA VENTA	10.00	3	1	26436	89.2	6.0	2.2	0.8	1.0	0.2	0.5	0.1	89.2	6.0	4.8	0.062	0.500	19.326828	-99.316929
CASETA DE COBRO LA VENTA	10.00	3	2	26405	89.5	6.0	2.0	0.8	0.9	0.2	0.5	0.1	89.5	6.0	4.5	0.059	0.500	19.326808	-99.316923
LIM. EDOS. TERM. D.F. PPIA. MEX.	18.66																		
T. C. MEXICO - TOLUCA (LIBRE) (LA MARQUESA)	19.20	1	1	20937	88.4	6.6	2.3	0.9	1.0	0.2	0.5	0.1	88.4	6.6	5.0	0.072	0.551	19.300692	-99.366205
T. C. MEXICO - TOLUCA (LIBRE) (LA MARQUESA)	19.20	1	2	21126	89.0	6.4	2.0	0.8	1.0	0.2	0.5	0.1	89.0	6.4	4.6	0.066	0.551	19.300692	-99.366205

7 CARR: MEXICO - CUERNAVACA (CUOTA)

CLAVE: 00041

RUTA: MEX-095D

AÑO: 2010

LUGAR	ESTACION				CLASIFICACION VEHICULAR EN PORCIENTO								COORDENADAS						
	KM	TE	SC	TDPA	A	B	C2	C3	T3S2	T3S3	T3S2R4	OTROS	A	B	C	K'	D	LATITUD	LONGITUD
MEXICO	0.00																		
T. C. MEXICO - CUERNAVACA (LIBRE)	18.65	3	1	15547	85.9	7.4	1.8	1.0	2.0	0.6	1.1	0.2	85.9	7.4	6.7	0.101	0.525	19.272205	-99.164040
T. C. MEXICO - CUERNAVACA (LIBRE)	18.65	3	2	17161	86.2	7.0	1.7	1.1	2.1	0.6	1.1	0.2	86.2	7.0	6.8	0.095	0.525	19.272205	-99.164040
CASETA DE COBRO TLALPAN	23.36	2	0	32742	86.9	6.7	1.6	1.0	2.0	0.6	1.0	0.2	86.9	6.7	6.4			19.241966	-99.148261
LIM. EDOS. TERM. D.F. PPIA. MOR.	47.09																		
CASETA DE COBRO TRES MARIAS	53.00	3	0	34947	87.4	6.3	1.7	1.0	1.9	0.6	0.9	0.2	87.4	6.3	6.3			19.056207	-99.241103
T. IZQ. CUAUTLA	70.50	1	1	20696	87.0	6.4	1.8	1.0	2.1	0.6	0.9	0.2	87.0	6.4	6.6	0.058	0.516	19.013169	-99.163400
T. IZQ. CUAUTLA	70.50	1	2	19395	86.9	6.6	1.7	1.0	2.1	0.6	0.9	0.2	86.9	6.6	6.5	0.064	0.516	19.013169	-99.163400
T. IZQ. LIBRAMIENTO DE CUERNAVACA	79.26	1	1	18363	87.6	6.0	1.7	1.0	1.9	0.6	1.0	0.2	87.6	6.0	6.4	0.058	0.511	18.978177	-99.231322
T. IZQ. LIBRAMIENTO DE CUERNAVACA	79.26	1	2	17558	87.4	6.3	1.7	1.0	1.9	0.6	0.9	0.2	87.4	6.3	6.3	0.065	0.511	18.978177	-99.231322
T. C. MEXICO - CUERNAVACA (LIBRE)	80.26																		

8 CARR: MEXICO - PUEBLA (CUOTA)

CLAVE: 00450

RUTA: MEX-150D

AÑO: 2010

LUGAR	ESTACION				CLASIFICACION VEHICULAR EN PORCIENTO								COORDENADAS						
	KM	TE	SC	TDPA	A	B	C2	C3	T3S2	T3S3	T3S2R4	OTROS	A	B	C	K'	D	LATITUD	LONGITUD
MEXICO	0.00																		
LIM. EDOS. TERM. D.F. PPIA. MEX.	17.71																		
T. IZQ. LOS REYES	20.00	3	1	60901	83.7	4.8	5.3	2.7	2.2	0.4	0.7	0.2	83.7	4.8	11.5	0.077	0.510	19.350377	-98.986289
T. IZQ. LOS REYES	20.00	3	2	63465	83.9	4.8	5.0	2.7	2.3	0.4	0.7	0.2	83.9	4.8	11.3	0.080	0.510	19.350377	-98.986289

DISTRITO FEDERAL

8 CARR: MEXICO - PUEBLA (CUOTA)

CLAVE: 00450

RUTA: MEX-150D

AÑO: 2010

LUGAR	ESTACION				CLASIFICACION VEHICULAR EN PORCIENTO								COORDENADAS						
	KM	TE	SC	TDPA	A	B	C2	C3	T3S2	T3S3	T3S2R4	OTROS	A	B	C	K'	D	LATITUD	LONGITUD
CASETA DE COBRO CHALCO	32.00	1	0	76791	83.9	4.6	5.2	2.7	2.3	0.4	0.7	0.2	83.9	4.6	11.5			19.292069	-98.881723
X. C. SANTA BARBARA - IZUCAR DE MATAMOROS	32.14	1	1	43936	83.2	4.7	5.6	2.7	2.5	0.4	0.7	0.2	83.2	4.7	12.1	0.079	0.508	19.292644	-98.887311
X. C. SANTA BARBARA - IZUCAR DE MATAMOROS	32.14	1	2	45351	84.3	4.6	4.9	2.6	2.3	0.4	0.7	0.2	84.3	4.6	11.1	0.068	0.508	19.292644	-98.887311
X. C. SANTA BARBARA - IZUCAR DE MATAMOROS	32.14	3	1	18117	76.3	8.3	6.5	3.5	3.3	0.3	1.4	0.4	76.3	8.3	15.4	0.077	0.505	19.293945	-98.879151
X. C. SANTA BARBARA - IZUCAR DE MATAMOROS	32.14	3	2	17974	75.8	8.6	6.8	3.4	3.3	0.3	1.4	0.4	75.8	8.6	15.6	0.070	0.505	19.293945	-98.879151
CASETA DE COBRO SAN MARCOS	33.30	2	0	27450	75.1	8.6	7.0	3.7	3.4	0.3	1.5	0.4	75.1	8.6	16.3			19.296361	-98.870726
LIM. EDOS. TERM. MEX. PPIA. PUE.	63.20																		
T. IZQ. RIO FRIO	63.79	3	1	12298	75.3	8.5	6.6	3.8	3.5	0.3	1.6	0.4	75.3	8.5	16.2	0.080	0.533	19.352145	-98.662908
T. IZQ. RIO FRIO	63.79	3	2	12849	74.5	8.9	7.2	3.7	3.5	0.3	1.5	0.4	74.5	8.9	16.6	0.098	0.533	19.352145	-98.662908
T. IZQ. TLAXCALA	90.61	1	1	15484	73.3	7.9	5.0	4.0	5.6	0.9	2.8	0.5	73.3	7.9	18.8	0.067	0.509	19.276193	-98.440898
T. IZQ. TLAXCALA	90.61	1	2	16040	71.4	8.7	5.1	4.1	6.2	1.0	3.0	0.5	71.4	8.7	19.9	0.063	0.509	19.276218	-98.440905
T. IZQ. TLAXCALA	90.61	3	1	15866	71.5	8.1	5.6	4.4	6.1	0.9	2.9	0.5	71.5	8.1	20.4	0.075	0.515	19.260772	-98.416126
T. IZQ. TLAXCALA	90.61	3	2	14945	71.6	8.5	5.0	4.2	6.1	0.9	3.2	0.5	71.6	8.5	19.9	0.084	0.515	19.260835	-98.416076
CASETA DE COBRO SAN MARTIN TEXMELUCAN	91.00	2	0	38271	72.1	8.3	5.2	4.2	5.8	0.9	3.0	0.5	72.1	8.3	19.6			19.241098	-98.385680
LIM. EDOS. TERM. PUE. PPIA. TLAX.	103.00																		
LIM. EDOS. TERM. TLAX. PPIA. PUE.	107.00																		
T. C. PUEBLA - TLAXCALA	124.90																		

9 CARR: MEXICO - QUERETARO (CUOTA)

CLAVE: 00411

RUTA: MEX-057-MEX-057D

AÑO: 2010

LUGAR	ESTACION				CLASIFICACION VEHICULAR EN PORCIENTO								COORDENADAS						
	KM	TE	SC	TDPA	A	B	C2	C3	T3S2	T3S3	T3S2R4	OTROS	A	B	C	K'	D	LATITUD	LONGITUD
MEXICO	0.00																		
LIM. EDOS. TERM. D.F. PPIA. MEX.	11.30																		
CASETA DE COBRO TEPOTZOTLAN	43.01	2	0	44648	67.6	5.6	6.8	4.8	11.2	1.1	2.5	0.4	67.6	5.6	26.8			19.715358	-99.207587
ENT. JOROBAS	56.18	1	1	30395	67.5	5.5	7.0	5.0	11.0	1.1	2.5	0.4	67.5	5.5	27.0	0.070	0.506	19.822613	-99.246170
ENT. JOROBAS	56.18	1	2	29636	66.4	5.6	7.1	5.1	11.7	1.1	2.6	0.4	66.4	5.6	28.0	0.071	0.506	19.822618	-99.246166
ENT. JOROBAS	56.18	3	1	27017	67.1	5.7	6.6	4.9	11.6	1.1	2.6	0.4	67.1	5.7	27.2	0.073	0.502	19.829119	-99.257183
ENT. JOROBAS	56.18	3	2	26818	68.0	5.2	6.6	4.8	11.4	1.1	2.5	0.4	68.0	5.2	26.8	0.073	0.502	19.829132	-99.257174
LIM. EDOS. TERM. MEX. PPIA. HGO.	59.85																		
T. DER. TEPEJI DEL RIO	69.36	1	1	23011	57.1	4.7	7.0	7.4	16.9	1.9	4.4	0.6	57.1	4.7	38.2	0.089	0.509	19.878429	-99.339888
T. DER. TEPEJI DEL RIO	69.36	1	2	23839	58.5	4.4	6.9	7.1	16.7	1.7	4.1	0.6	58.5	4.4	37.1	0.085	0.509	19.876556	-99.341227
T. DER. TEPEJI DEL RIO	69.36	3	1	20857	58.8	4.5	6.9	6.8	16.4	1.7	4.3	0.6	58.8	4.5	36.7	0.071	0.501	19.897399	-99.349002
T. DER. TEPEJI DEL RIO	69.36	3	2	20914	57.7	4.5	6.8	7.0	17.2	1.7	4.5	0.6	57.7	4.5	37.8	0.078	0.501	19.897525	-99.349069
T. IZQ. JILOTEPEC	83.75	1	1	15216	57.7	4.5	7.1	7.0	16.7	1.9	4.5	0.6	57.7	4.5	37.8	0.086	0.503	19.969823	-99.429886

DISTRITO FEDERAL

9 CARR: MEXICO - QUERETARO (CUOTA)

CLAVE: 00411

RUTA: MEX-057-MEX-057D

AÑO: 2010

LUGAR	ESTACION				CLASIFICACION VEHICULAR EN PORCIENTO								COORDENADAS						
	KM	TE	SC	TDPA	A	B	C2	C3	T3S2	T3S3	T3S2R4	OTROS	A	B	C	K'	D	LATITUD	LONGITUD
T. IZQ. JILOTEPEC	83.75	1	2	15017	57.2	4.4	7.2	7.1	17.1	1.9	4.5	0.6	57.2	4.4	38.4	0.077	0.503	19.969491	-99.430084
T. IZQ. JILOTEPEC	83.75	3	1	15348	58.7	4.3	7.0	7.2	15.9	1.8	4.5	0.6	58.7	4.3	37.0	0.067	0.500	19.985802	-99.444881
T. IZQ. JILOTEPEC	83.75	3	2	15377	57.8	4.6	7.1	7.5	16.2	1.9	4.3	0.6	57.8	4.6	37.6	0.070	0.500	19.985899	-99.444757
LIM. EDOS. TERM. HGO. PPIA. MEX.	86.00																		
X. C. JILOTEPEC - MARAVILLAS	107.00	1	1	17368	58.2	4.5	6.7	6.8	16.9	1.8	4.5	0.6	58.2	4.5	37.3	0.069	0.502	20.082716	-99.625099
X. C. JILOTEPEC - MARAVILLAS	107.00	1	2	17541	56.9	4.6	7.1	6.9	17.3	1.8	4.8	0.6	56.9	4.6	38.5	0.071	0.502	20.082759	-99.626396
X. C. JILOTEPEC - MARAVILLAS	107.00	3	1	15552	56.9	4.7	6.8	7.1	17.6	1.9	4.4	0.6	56.9	4.7	38.4	0.074	0.531	20.082771	-99.634031
X. C. JILOTEPEC - MARAVILLAS	107.00	3	2	17593	58.3	4.3	6.6	7.4	16.8	1.7	4.3	0.6	58.3	4.3	37.4	0.069	0.531	20.082497	-99.633379
T. IZQ. ACULCO	125.00	1	1	20609	58.1	4.3	6.7	7.4	16.5	1.8	4.6	0.6	58.1	4.3	37.6	0.067	0.502	20.095339	-99.691017
T. IZQ. ACULCO	125.00	1	2	20449	57.4	4.4	7.1	7.6	16.6	1.8	4.5	0.6	57.4	4.4	38.2	0.071	0.502	20.095504	-99.690828
T. IZQ. ACULCO	125.00	3	1	19521	56.9	4.4	7.4	7.1	17.3	1.8	4.5	0.6	56.9	4.4	38.7	0.081	0.501	20.109274	-99.705413
T. IZQ. ACULCO	125.00	3	2	19427	57.6	4.4	6.7	7.4	16.9	1.8	4.6	0.6	57.6	4.4	38.0	0.084	0.501	20.109173	-99.705426
LIM. EDOS. TERM. MEX. PPIA. QRO.	145.50																		
CASETA DE COBRO PALMILLAS	145.80	2	0	42075	58.0	4.5	6.9	7.2	16.5	1.8	4.5	0.6	58.0	4.5	37.5			20.296103	-99.928994
T. IZQ. TOLUCA	148.50	1	1	15551	57.4	4.5	6.7	7.4	16.9	1.8	4.7	0.6	57.4	4.5	38.1	0.068	0.525	20.293284	-99.924772
T. IZQ. TOLUCA	148.50	1	2	17216	57.4	4.6	6.8	7.2	17.2	1.8	4.4	0.6	57.4	4.6	38.0	0.064	0.525	20.293284	-99.924772
T. IZQ. TOLUCA	148.50	3	1	20756	56.6	4.7	7.0	7.7	17.3	1.8	4.3	0.6	56.6	4.7	38.7	0.058	0.520	20.306857	-99.934387
T. IZQ. TOLUCA	148.50	3	2	22522	59.3	4.1	6.4	7.0	16.6	1.7	4.3	0.6	59.3	4.1	36.6	0.059	0.520	20.306834	-99.934974
T. DER. PONIENTE SAN JUAN DEL RIO	164.10	3	1	26029	58.7	4.5	7.0	7.4	15.6	1.7	4.5	0.6	58.7	4.5	36.8	0.072	0.503	20.373440	-99.994201
T. DER. PONIENTE SAN JUAN DEL RIO	164.10	3	2	26373	58.0	4.7	7.3	7.1	16.1	1.8	4.4	0.6	58.0	4.7	37.3	0.072	0.503	20.373440	-99.994201
T. IZQ. ACAMBARO	170.45	3	1	23891	57.2	4.7	6.9	7.5	16.9	1.8	4.4	0.6	57.2	4.7	38.1	0.075	0.503	20.444776	-100.076049
T. IZQ. ACAMBARO	170.45	3	2	24184	57.9	4.2	7.2	6.9	17.1	1.7	4.4	0.6	57.9	4.2	37.9	0.070	0.503	20.444776	-100.076049
T. DER. LIBRAMIENTO DE QUERETARO A SAN LUIS POTOSI	207.00	1	1	25694	57.5	4.5	7.1	7.4	16.4	1.8	4.7	0.6	57.5	4.5	38.0	0.085	0.517	20.588187	-100.350777
T. DER. LIBRAMIENTO DE QUERETARO A SAN LUIS POTOSI	207.00	1	2	27450	59.4	4.3	6.4	7.2	16.1	1.8	4.2	0.6	59.4	4.3	36.3	0.087	0.517	20.588187	-100.350777
T. DER. LIBRAMIENTO DE QUERETARO A SAN LUIS POTOSI	207.00	3	1	30421	57.7	4.2	6.9	7.3	17.2	1.8	4.3	0.6	57.7	4.2	38.1	0.076	0.502	20.578427	-100.378707
T. DER. LIBRAMIENTO DE QUERETARO A SAN LUIS POTOSI	207.00	3	2	32501	59.3	4.4	7.0	6.7	15.6	1.8	4.6	0.6	59.3	4.4	36.3	0.075	0.502	20.578427	-100.378707
QUERETARO	211.60																		

10 CARR: MEXICO - TIZAYUCA (CUOTA)

CLAVE: 00432

RUTA: MEX-085D

AÑO: 2010

LUGAR	ESTACION				CLASIFICACION VEHICULAR EN PORCIENTO								COORDENADAS						
	KM	TE	SC	TDPA	A	B	C2	C3	T3S2	T3S3	T3S2R4	OTROS	A	B	C	K'	D	LATITUD	LONGITUD
T. C. MEXICO - PACHUCA (LIBRE)	0.00																		
LIM. EDOS. TERM. D.F. PPIA. MEX.	9.86																		
CASETA DE COBRO SAN CRISTOBAL	21.00	1	0	99997	89.5	4.8	3.4	1.3	0.7	0.1	0.2	0.0	89.5	4.8	5.7			19.587792	-99.042025

DISTRITO FEDERAL

10 CARR: MEXICO - TIZAYUCA (CUOTA)

CLAVE: 00432

RUTA: MEX-085D

AÑO: 2010

LUGAR	ESTACION				CLASIFICACION VEHICULAR EN PORCIENTO								COORDENADAS						
	KM	TE	SC	TDPA	A	B	C2	C3	T3S2	T3S3	T3S2R4	OTROS	A	B	C	K'	D	LATITUD	LONGITUD
CASETA DE COBRO REVOLUCION	22.80	1	0	75509	88.5	4.6	4.1	1.5	0.9	0.1	0.3	0.0	88.5	4.6	6.9			19.602793	-99.038090
ENT. MORELOS	23.28	3	1	19537	88.2	4.8	4.2	1.5	0.9	0.1	0.3	0.0	88.2	4.8	7.0	0.076	0.512	19.624145	-99.027017
ENT. MORELOS	23.28	3	2	18624	88.6	4.5	4.1	1.5	0.9	0.1	0.3	0.0	88.6	4.5	6.9	0.072	0.512	19.624172	-99.026962
CASETA DE COBRO OJO DE AGUA	25.00	2	0	62434	85.4	6.3	4.7	1.7	1.4	0.2	0.3	0.0	85.4	6.3	8.3			19.618818	-99.029462
T. IZO. TECAMAC	35.62	3	1	12435	84.7	6.6	5.0	1.7	1.5	0.2	0.3	0.0	84.7	6.6	8.7	0.115	0.501	19.717616	-98.960486
T. IZO. TECAMAC	35.62	3	2	12377	85.5	6.2	4.8	1.6	1.4	0.2	0.3	0.0	85.5	6.2	8.3	0.108	0.501	19.717609	-98.960491
LIM. EDOS. TERM. MEX. PPIA. HGO.	49.60																		
X. C. OTUMBA - TIZAYUCA	53.45	1	1	13372	85.6	6.2	4.7	1.7	1.3	0.2	0.3	0.0	85.6	6.2	8.2	0.115	0.507	19.810335	-98.945744
X. C. OTUMBA - TIZAYUCA	53.45	1	2	12982	86.0	5.9	4.7	1.6	1.3	0.2	0.3	0.0	86.0	5.9	8.1	0.108	0.507	19.810335	-98.945741
T. C. MEXICO - PACHUCA (LIBRE)	60.50	1	1	13210	84.9	6.4	5.0	1.8	1.4	0.2	0.3	0.0	84.9	6.4	8.7	0.109	0.515	19.882952	-98.937543
T. C. MEXICO - PACHUCA (LIBRE)	60.50	1	2	12435	85.5	6.5	4.4	1.7	1.4	0.2	0.3	0.0	85.5	6.5	8.0	0.110	0.515	19.882993	-98.937542

11 CARR: CHALCO - MIXQUIC

CLAVE: 00171

RUTA: EM-DF

AÑO: 2010

LUGAR	ESTACION				CLASIFICACION VEHICULAR EN PORCIENTO								COORDENADAS						
	KM	TE	SC	TDPA	A	B	C2	C3	T3S2	T3S3	T3S2R4	OTROS	A	B	C	K'	D	LATITUD	LONGITUD
CHALCO	0.00	3	1	11553	90.0	3.8	1.5	0.6	2.6	0.2	0.8	0.5	90.0	3.8	6.2	0.060	0.501	19.239655	-98.909696
CHALCO	0.00	3	2	11489	90.2	3.7	1.6	0.6	2.4	0.3	0.7	0.5	90.2	3.7	6.1	0.062	0.501	19.239655	-98.909696
LIM. EDOS. TERM. MEX. PPIA. D.F.	8.00																		
MIXQUIC	10.00	1	0	5484	89.5	4.5	1.1	0.9	2.6	0.1	0.8	0.5	89.5	4.5	6.0	0.061	0.501	19.224732	-98.945028

12 CARR: CHALCO - TLAHUAC

CLAVE: 00170

RUTA: EM-DF

AÑO: 2010

LUGAR	ESTACION				CLASIFICACION VEHICULAR EN PORCIENTO								COORDENADAS						
	KM	TE	SC	TDPA	A	B	C2	C3	T3S2	T3S3	T3S2R4	OTROS	A	B	C	K'	D	LATITUD	LONGITUD
CHALCO	0.00	3	1	10488	87.4	4.1	2.1	1.9	2.2	1.5	0.4	0.4	87.4	4.1	8.5	0.065	0.501	19.250270	-98.918876
CHALCO	0.00	3	2	10526	87.4	4.0	2.2	2.0	2.1	1.6	0.3	0.4	87.4	4.0	8.6	0.064	0.501	19.250270	-98.918876
LIM. EDOS. TERM. MEX. PPIA. D.F.	7.50																		
TLAHUAC	12.00	1	0	6444	88.0	3.5	2.0	2.4	1.8	1.4	0.4	0.5	88.0	3.5	8.5	0.073	0.507	19.264138	-98.991879

13 CARR: T. C. (MEXICO - MIXQUIC) - SAN PABLO ATLAZALPAN

CLAVE: 00044

RUTA: EM-106-DF

AÑO: 2010

LUGAR	ESTACION				CLASIFICACION VEHICULAR EN PORCIENTO								COORDENADAS						
	KM	TE	SC	TDPA	A	B	C2	C3	T3S2	T3S3	T3S2R4	OTROS	A	B	C	K'	D	LATITUD	LONGITUD
T. C. MEXICO - MIXQUIC	0.00	3	0	5424	86.3	3.2	3.5	1.7	2.5	1.3	1.0	0.5	86.3	3.2	10.5	0.065	0.510	19.209466	-98.967284

DISTRITO FEDERAL

13 CARR: T. C. (MEXICO - MIXQUIC) - SAN PABLO ATLAZALPAN

CLAVE: 00044

RUTA: EM-106-DF

AÑO: 2010

LUGAR	ESTACION				CLASIFICACION VEHICULAR EN PORCIENTO												COORDENADAS			
	KM	TE	SC	TDPA	A	B	C2	C3	T3S2	T3S3	T3S2R4	OTROS	A	B	C	K'	D	LATITUD	LONGITUD	
LIM. EDOS. TERM. D.F. PPIA. MEX.	2.00																			
SAN PABLO ATLAZALPAN	7.00																			

14 CARR: XALATLACO - EL AJUSCO

CLAVE: 00017

RUTA: EM-DF

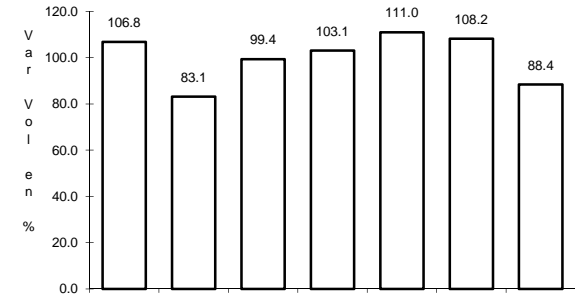
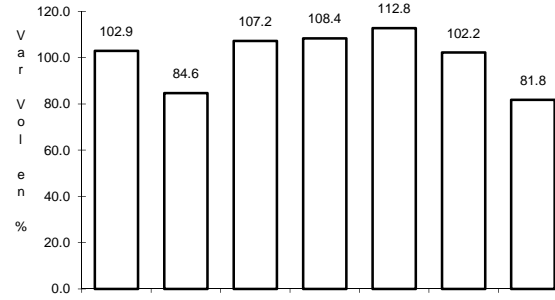
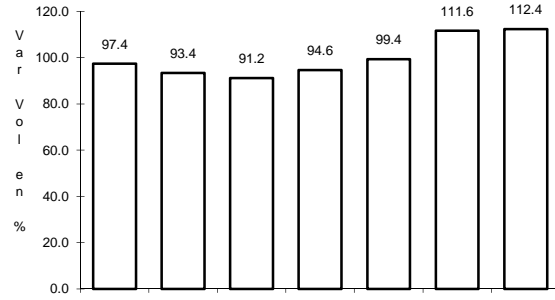
AÑO: 2010

LUGAR	ESTACION				CLASIFICACION VEHICULAR EN PORCIENTO												COORDENADAS			
	KM	TE	SC	TDPA	A	B	C2	C3	T3S2	T3S3	T3S2R4	OTROS	A	B	C	K'	D	LATITUD	LONGITUD	
T. C. ENT. CRUZ DE LA MISION - SAN NICOLAS COATEPEC	0.00	3	0	2029	81.2	6.9	4.5	2.3	2.4	1.7	0.2	0.8	81.2	6.9	11.9	0.070	0.502	19.160133	-99.404586	
LIM. EDOS. TERM. MEX. PPIA. D.F.	17.70																			
T. C. CIRCUITO DEL AJUSCO	27.60	1	0	1096	80.6	6.1	4.1	2.5	2.8	2.7	0.2	1.0	80.6	6.1	13.3	0.085	0.506	19.207161	-99.276427	

1 CARR: MEXICO - CUERNAVACA (LIBRE)

CLAVE: 00040

RUTA: MEX-095



Km: 28.78 Tipo: 1 Sent: 0

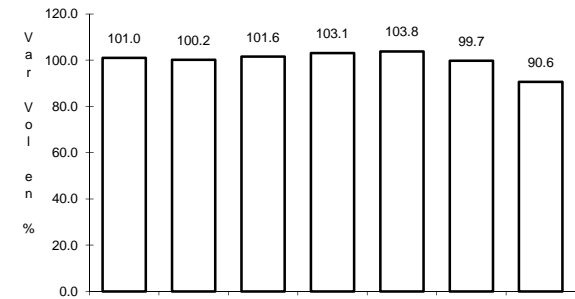
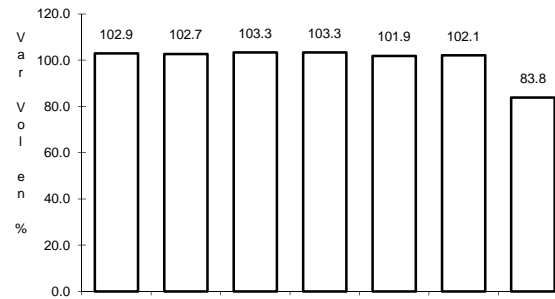
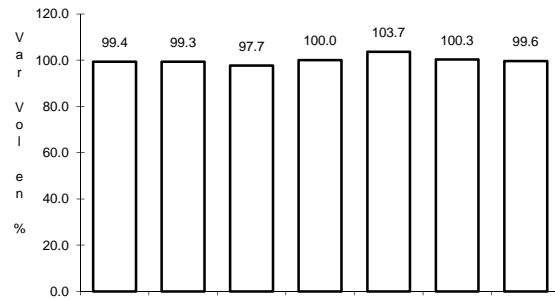
Km: 71.36 Tipo: 3 Sent: 1

Km: 71.36 Tipo: 3 Sent: 2

2 CARR: MEXICO - PACHUCA (LIBRE)

CLAVE: 00431

RUTA: MEX-085



Km: 26.93 Tipo: 1 Sent: 0

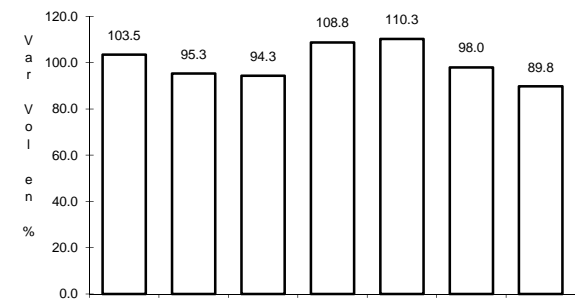
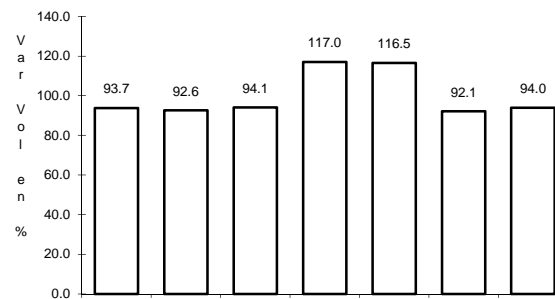
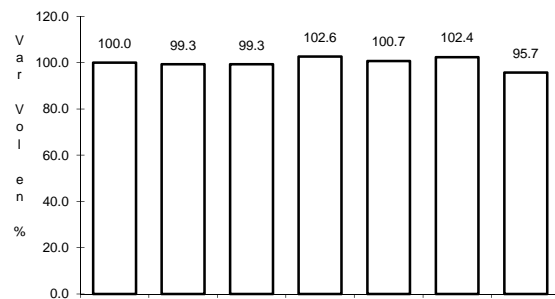
Km: 86.50 Tipo: 1 Sent: 1

Km: 86.50 Tipo: 1 Sent: 2

3 CARR: MEXICO - PUEBLA (LIBRE)

CLAVE: 00449

RUTA: MEX-150



Km: 28.85 Tipo: 1 Sent: 1

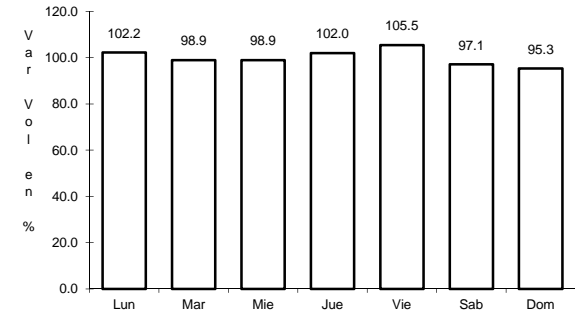
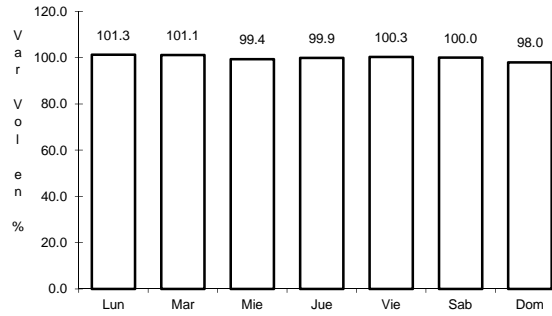
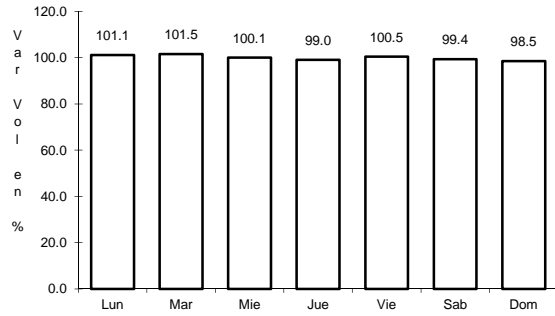
Km: 28.85 Tipo: 1 Sent: 2

Km: 101.00 Tipo: 1 Sent: 0

4 CARR: MEXICO - TOLUCA

CLAVE: 00447

RUTA: MEX-015



Km: 12.84

Tipo: 3

Sent: 1

Km: 12.84

Tipo: 3

Sent: 2

Km: 51.71

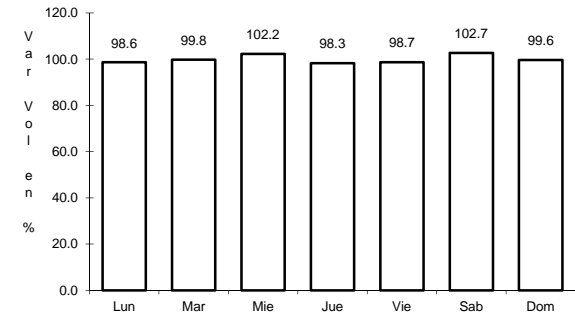
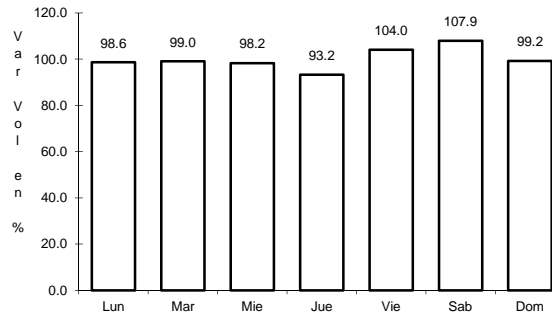
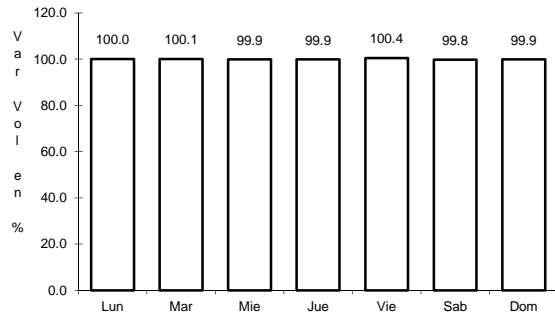
Tipo: 1

Sent: 1

5 CARR: SAN GREGORIO - OAXTEPEC

CLAVE: 00901

RUTA: MEX-142



Km: 0.00

Tipo: 3

Sent: 0

Km: 33.80

Tipo: 1

Sent: 0

Km: 53.00

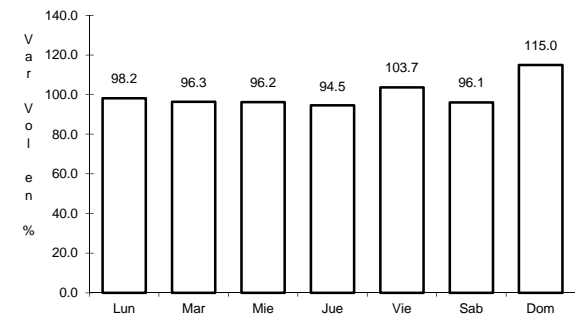
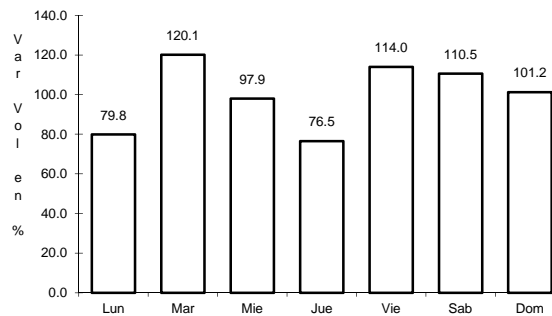
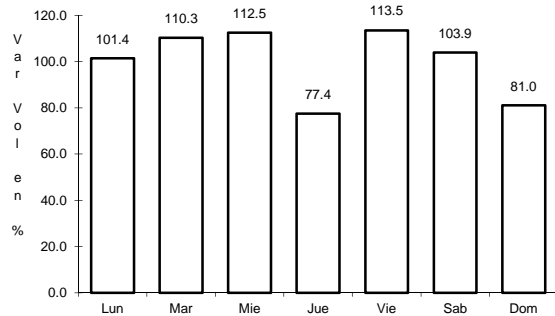
Tipo: 3

Sent: 0

6 CARR: CONSTITUYENTES - LA MARQUESA (CUOTA)

CLAVE: 00446

RUTA: MEX-015D



Km: 0.00

Tipo: 3

Sent: 1

Km: 0.00

Tipo: 3

Sent: 2

Km: 19.20

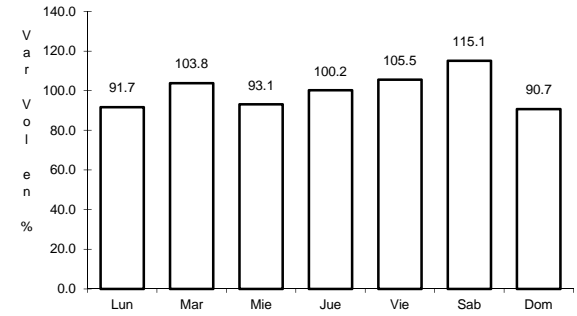
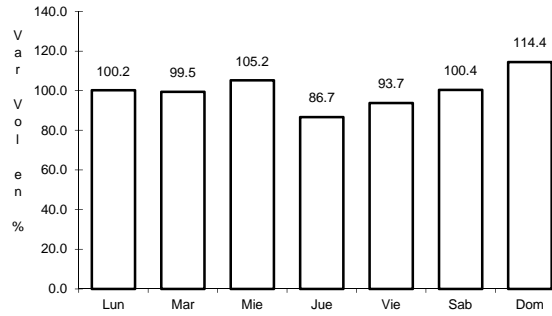
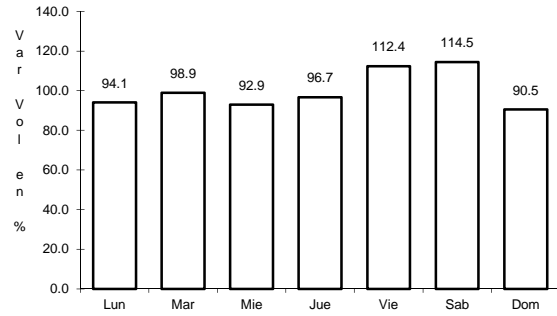
Tipo: 1

Sent: 1

7 CARR: MEXICO - CUERNAVACA (CUOTA)

CLAVE: 00041

RUTA: MEX-095D



Km: 18.65

Tipo: 3

Sent: 1

Km: 18.65

Tipo: 3

Sent: 2

Km: 79.26

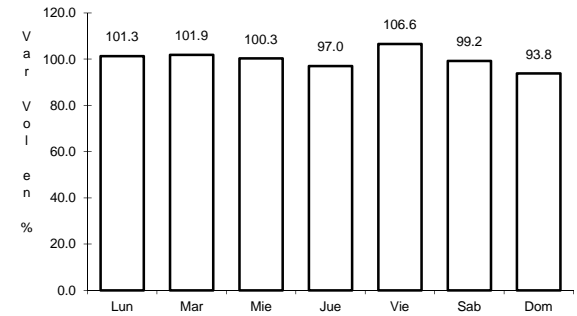
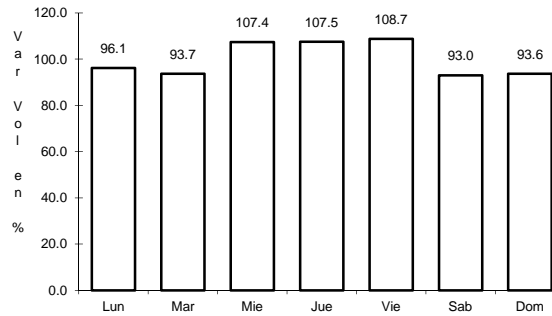
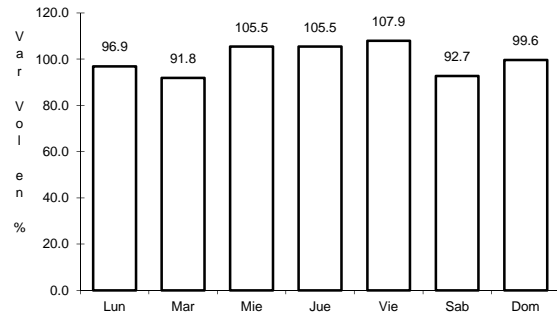
Tipo: 1

Sent: 1

8 CARR: MEXICO - PUEBLA (CUOTA)

CLAVE: 00450

RUTA: MEX-150D



Km: 20.00

Tipo: 3

Sent: 1

Km: 20.00

Tipo: 3

Sent: 2

Km: 90.61

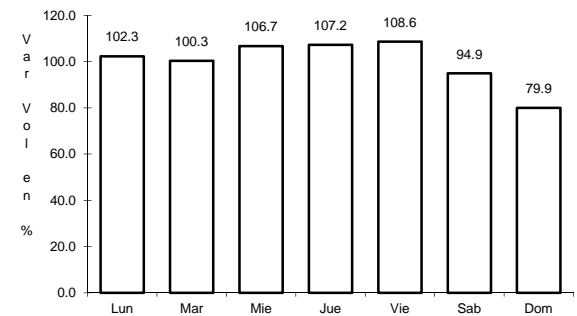
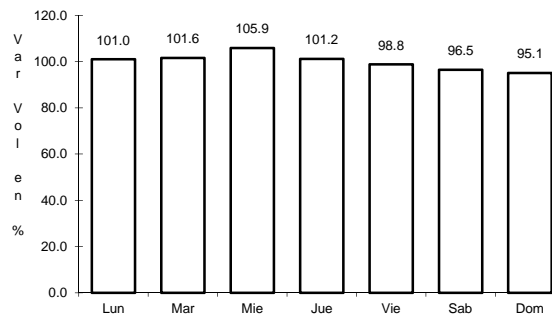
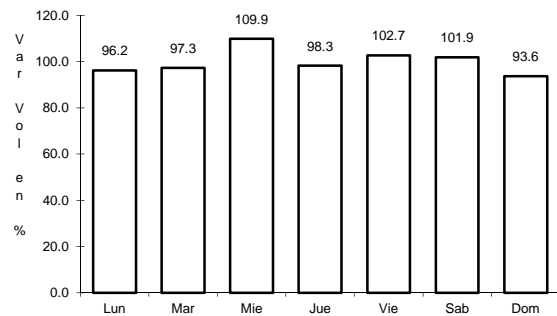
Tipo: 3

Sent: 1

9 CARR: MEXICO - QUERETARO (CUOTA)

CLAVE: 00411

RUTA: MEX-057-MEX-057D



Km: 56.18

Tipo: 1

Sent: 1

Km: 56.18

Tipo: 1

Sent: 2

Km: 207.00

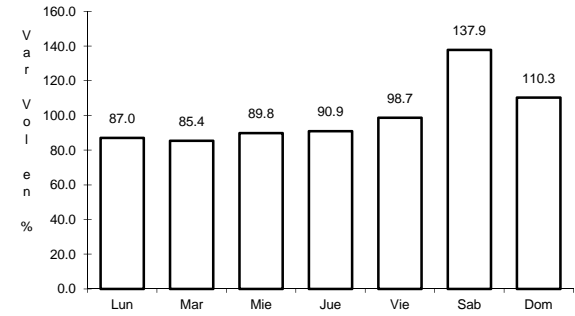
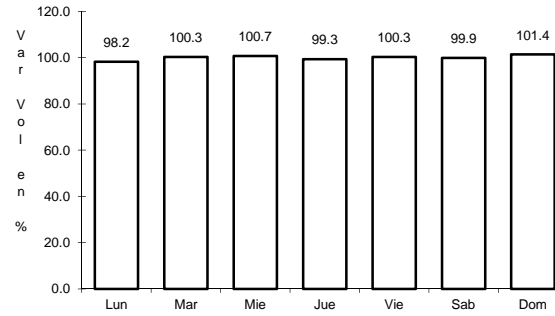
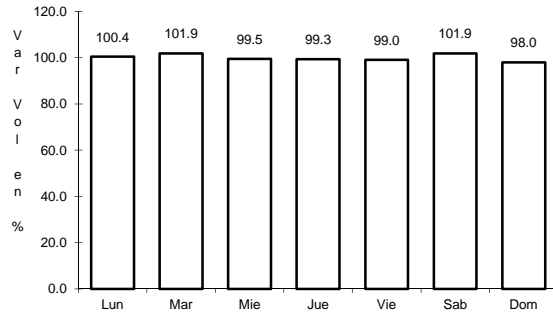
Tipo: 3

Sent: 1

10 CARR: MEXICO - TIZAYUCA (CUOTA)

CLAVE: 00432

RUTA: MEX-085D



Km: 23.28

Tipo: 3

Sent: 1

Km: 23.28

Tipo: 3

Sent: 2

Km: 60.50

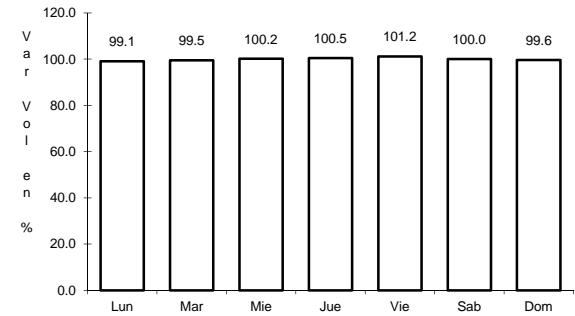
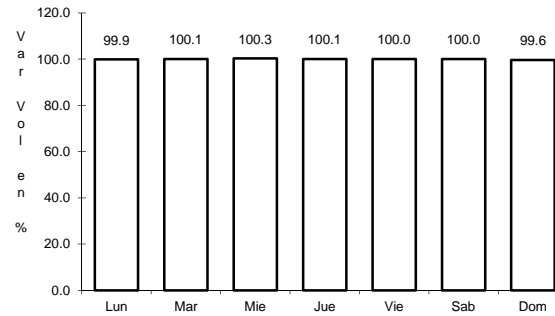
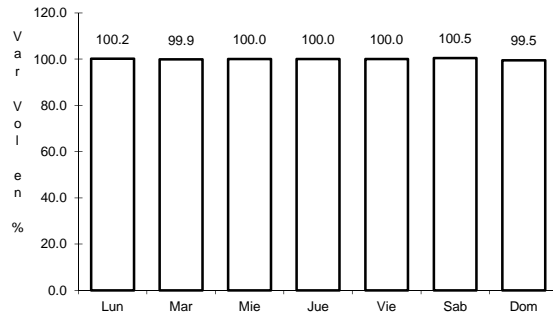
Tipo: 1

Sent: 1

11 CARR: CHALCO - MIXQUIC

CLAVE: 00171

RUTA: EM-DF



Km: 0.00

Tipo: 3

Sent: 1

Km: 0.00

Tipo: 3

Sent: 2

Km: 10.00

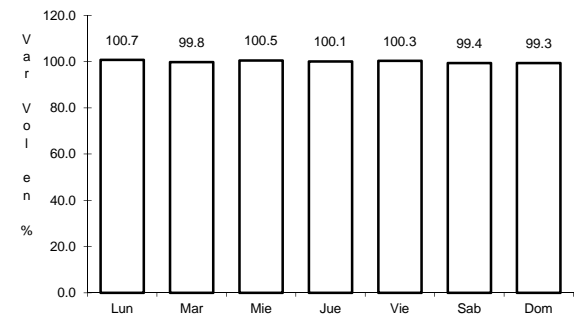
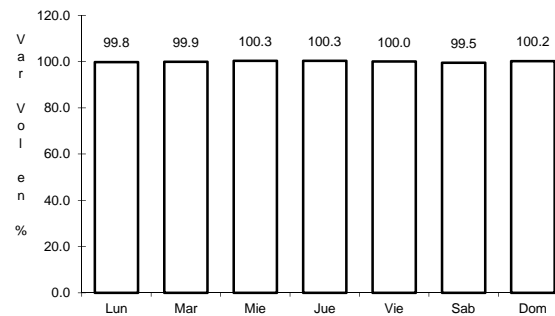
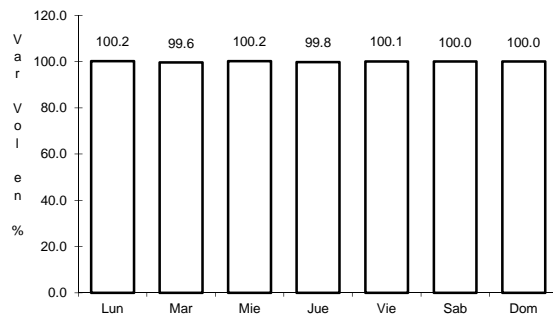
Tipo: 1

Sent: 0

12 CARR: CHALCO - TLAHUAC

CLAVE: 00170

RUTA: EM-DF



Km: 0.00

Tipo: 3

Sent: 1

Km: 0.00

Tipo: 3

Sent: 2

Km: 12.00

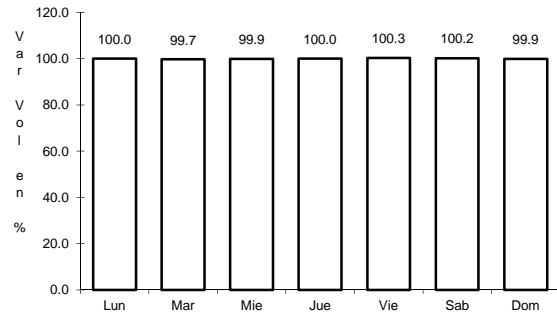
Tipo: 1

Sent: 0

13 CARR: T. C. (MEXICO - MIXQUIC) - SAN PABLO ATLAZALPAN

CLAVE: 00044

RUTA: EM-106-DF



Km: 0.00

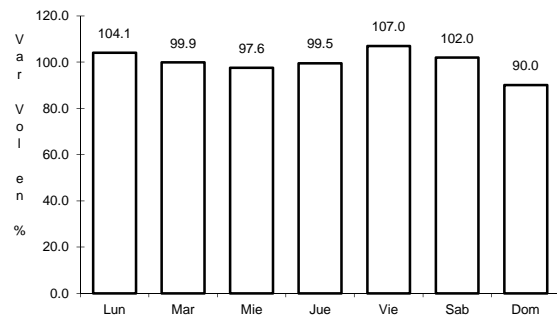
Tipo: 3

Sent: 0

14 CARR: XALATLACO - EL AJUSCO

CLAVE: 00017

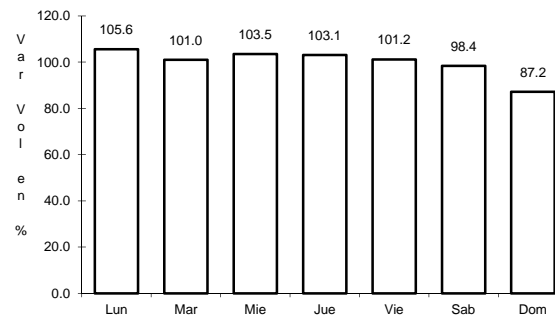
RUTA: EM-DF



Km: 0.00

Tipo: 3

Sent: 0



Km: 27.60

Tipo: 1

Sent: 0