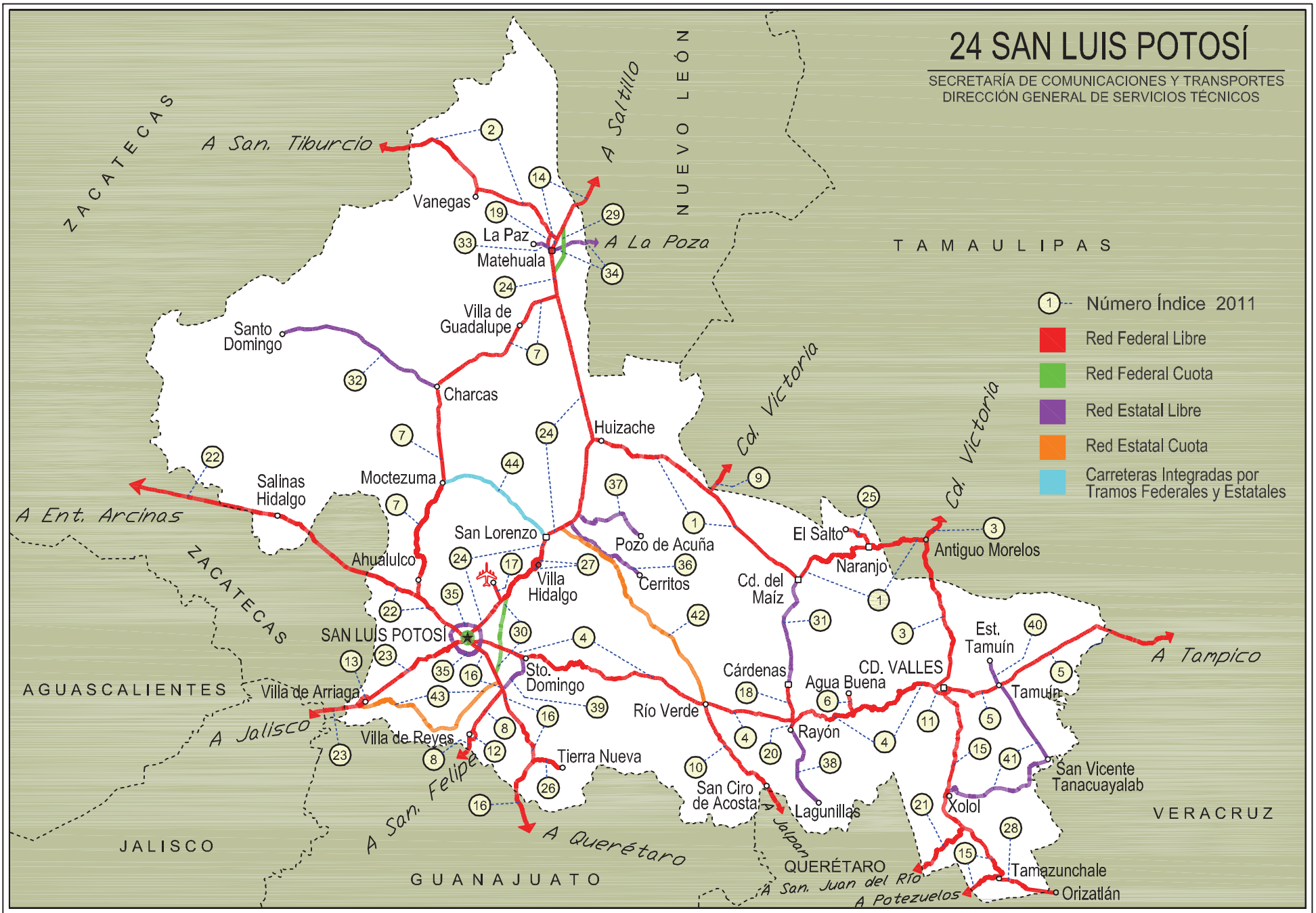


SAN LUIS POTOSI

No. INDICE	CARRETERA	ruta
<b>---RED FEDERAL LIBRE---</b>		
1	ANTIGUO MORELOS - ENT. EL HUIZACHE	MEX-080
2	CARBONERA - T. C. (ENT. MORELOS - SALTILLO)	MEX-062
3	CD. VALLES - CD. VICTORIA	MEX-085
4	CD. VALLES - SAN LUIS POTOSI	MEX-070
5	CD. VALLES - TAMPICO	MEX-070
6	EL CLARIN - AGUA BUENA	MEX-070
7	ENT. AHUALULCO - ENT. LA BONITA	MEX-063
8	ENT. DE ZARAGOZA - SAN FELIPE	MEX-037
9	ENT. TULA - CD. VICTORIA	MEX-101
10	JALPAN DE SERRA - RIO VERDE	MEX-069
11	LIBRAMIENTO DE CD. VALLES	MEX-070
12	LIBRAMIENTO DE VILLA DE REYES	MEX-037
13	LIBRAMIENTO VILLA DE ARRIAGA	MEX-080
14	MATEHUALA - ENT. PUERTO MEXICO	MEX-057
15	PORTEZUELO - CD. VALLES	MEX-085
16	QUERETARO - SAN LUIS POTOSI	MEX-057
17	RAMAL A AEROPUERTO DE S. L. P.	MEX-057
18	RAMAL A CARDENAS	MEX-070
19	RAMAL A OJO DE AGUA	MEX-062
20	RAMAL A RAYON	MEX-070
21	SAN JUAN DEL RIO - XILITLA	MEX-120
22	SAN LUIS POTOSI - ENT. ARCINAS	MEX-049
23	SAN LUIS POTOSI - LAGOS DE MORENO	MEX-070-080
24	SAN LUIS POTOSI - MATEHUALA	MEX-057
25	T. C. (ENT. EL HUIZACHE- ANT. MORELOS)-EL SALTO	MEX-080
26	T. C. (QRO - S.L.P.) - TIERRA NUEVA	MEX-057
27	T. C. (S.L.P. - MATEHUALA) - VILLA HIDALGO	MEX-057
28	TAMAZUNCHALE - SAN FELIPE ORIZATLAN	MEX-102
<b>---RED FEDERAL DE CUOTA---</b>		
29	LIBRAMIENTO DE MATEHUALA (CUOTA)	MEX-D
30	LIBRAMIENTO ORIENTE DE SAN LUIS POTOSI (CUOTA)	MEX-057D
<b>---RED ESTATAL LIBRE---</b>		
31	CARDENAS - CD. DEL MAIZ	SLP-005
32	CHARCAS - VILLA SANTO DOMINGO	SLP-017
33	MATEHUALA - LA PAZ	SLP-020
34	MATEHUALA - LA POZA	SLP-029
35	PERIFERICO DE SAN LUIS POTOSI	SLP-032
36	RAMAL A CERRITOS	SLP-007
37	RAMAL A POZO DE ACUÑA	SLP-009
38	RAYON - ARROYO SECO	SLP-011
39	SANTO DOMINGO - CERRO GORDO	SLP-022
40	TAMUIN - ESTACION F.F.C.C. TAMUIN	SLP-040
41	XOLOL - TAMUIN	SLP-014
<b>---RED ESTATAL DE CUOTA---</b>		
42	CERRITOS - RIO VERDE (CUOTA)	SLP-D
43	SAN LUIS POTOSI - VILLA DE ARRIAGA (CUOTA)	SLP-D
<b>---CARRETERAS INTEGRADAS POR TRAMOS FEDERALES Y ESTATALES---</b>		
44	SAN LORENZO - MOCTEZUMA	MEX-063-SLP-012

# 24 SAN LUIS POTOSÍ

SECRETARÍA DE COMUNICACIONES Y TRANSPORTES  
DIRECCIÓN GENERAL DE SERVICIOS TÉCNICOS



- ① Número Índice 2011
- Red Federal Libre
- Red Federal Cuota
- Red Estatal Libre
- Red Estatal Cuota
- Carreteras Integradas por Tramos Federales y Estatales

SAN LUIS POTOSI

1 CARR: ANTIGUO MORELOS - ENT. EL HUIZACHE

CLAVE: 00136

RUTA: MEX-080

AÑO: 2010

LUGAR	ESTACION				CLASIFICACION VEHICULAR EN PORCIENTO								COORDENADAS						
	KM	TE	SC	TDPA	A	B	C2	C3	T3S2	T3S3	T3S2R4	OTROS	A	B	C	K'	D	LATITUD	LONGITUD
ANTIGUO MORELOS	0.00	3	0	2437	75.9	10.3	7.3	0.9	2.6	0.8	1.9	0.3	75.9	10.3	13.8	0.066	0.507	22.553880	-99.090630
NUEVO MORELOS	19.28	1	0	1231	77.9	9.8	5.7	0.8	3.2	0.8	1.5	0.3	77.9	9.8	12.3	0.073	0.505	22.540894	-99.212247
LIM. EDOS. TERM. TAMPS. PPIA. S.L.P.	25.00																		
EL NARANJO	32.00	1	0	3834	75.4	12.1	5.7	0.6	2.9	1.3	1.2	0.8	75.4	12.1	12.5	0.070	0.504	22.529724	-99.312397
EL NARANJO	32.00	3	0	1872	71.9	12.0	8.1	1.4	3.6	0.9	1.3	0.8	71.9	12.0	16.1	0.071	0.599	22.518076	-99.335735
CD. DEL MAIZ	86.00	3	0	2244	75.8	11.1	6.6	0.8	2.5	1.0	1.4	0.8	75.8	11.1	13.1	0.068	0.501	22.408127	-99.615569
T. DER. TULA	141.21	3	0	3709	73.3	11.7	7.6	1.2	3.3	0.6	1.5	0.8	73.3	11.7	15.0	0.076	0.503	22.741124	-99.983941
T. C. SAN LUIS POTOSI - MATEHUALA (ENT. EL HUIZACHE)	198.83	1	0	3553	75.6	9.3	8.0	0.7	3.2	1.0	1.4	0.8	75.6	9.3	15.1	0.084	0.515	22.929971	-100.450322

2 CARR: CARBONERA - T. C. (ENT. MORELOS - SALTILLO)

CLAVE: 00218

RUTA: MEX-062

AÑO: 2010

LUGAR	ESTACION				CLASIFICACION VEHICULAR EN PORCIENTO								COORDENADAS						
	KM	TE	SC	TDPA	A	B	C2	C3	T3S2	T3S3	T3S2R4	OTROS	A	B	C	K'	D	LATITUD	LONGITUD
CARBONERA	0.00	3	0	1908	79.7	6.5	6.8	1.7	2.4	1.5	0.7	0.7	79.7	6.5	13.8	0.093	0.523	23.698167	-100.620139
CEDRAL	18.00	1	0	3585	77.8	7.0	7.2	1.6	3.2	1.8	0.6	0.8	77.8	7.0	15.2	0.095	0.500	23.813803	-100.714145
CEDRAL	18.00	3	0	3715	80.6	6.0	5.5	2.1	2.8	1.5	0.8	0.7	80.6	6.0	13.4	0.067	0.503	23.828563	-100.736764
LIM. EDOS. TERM. S.L.P. PPIA. ZAC.	79.20																		
T. C. ENT. MORELOS - SALTILLO	112.00	1	0	1293	86.0	3.6	4.6	2.5	1.2	1.1	0.5	0.5	86.0	3.6	10.4	0.081	0.501	24.157515	-101.494044

3 CARR: CD. VALLES - CD. VICTORIA

CLAVE: 00509

RUTA: MEX-085

AÑO: 2010

LUGAR	ESTACION				CLASIFICACION VEHICULAR EN PORCIENTO								COORDENADAS						
	KM	TE	SC	TDPA	A	B	C2	C3	T3S2	T3S3	T3S2R4	OTROS	A	B	C	K'	D	LATITUD	LONGITUD
CD. VALLES	0.00	3	0	5954	81.3	7.2	4.0	3.0	1.9	1.4	1.2	0.0	81.3	7.2	11.5	0.082	0.506	22.015577	-98.997953
LIM. EDOS. TERM. S.L.P. PPIA. TAMPS.	50.40																		
ANTIGUO MORELOS	66.90	1	0	2850	82.0	7.0	3.8	2.9	1.8	1.4	1.1	0.0	82.0	7.0	11.0	0.066	0.502	22.550345	-99.078411
ANTIGUO MORELOS	66.90	3	0	3429	81.5	7.0	3.9	3.2	1.8	1.4	1.2	0.0	81.5	7.0	11.5	0.077	0.501	22.558301	-99.078176
CD. MANTE	98.00	1	0	6319	81.0	7.0	4.1	3.3	1.9	1.4	1.3	0.0	81.0	7.0	12.0	0.094	0.516	22.706106	-98.999453
T. IZQ. OCAMPO	110.00	3	0	3415	81.8	7.0	3.7	3.1	1.8	1.4	1.2	0.0	81.8	7.0	11.2	0.058	0.533	22.844334	-99.026502
T. IZQ. GOMEZ FARIAS	132.84	3	0	1798	82.5	6.4	3.7	3.1	1.9	1.3	1.1	0.0	82.5	6.4	11.1	0.063	0.516	23.025865	-99.093662
T. IZQ. LLERA DE CANALES	170.00	3	0	5154	81.5	6.8	3.9	3.2	1.9	1.4	1.3	0.0	81.5	6.8	11.7	0.071	0.502	23.314781	-99.000004
T. DER. GONZALEZ	172.50	3	0	2196	81.7	6.6	4.0	3.2	1.9	1.4	1.2	0.0	81.7	6.6	11.7	0.060	0.514	23.322730	-98.998141
CD. VICTORIA	232.00	1	0	3378	81.6	6.8	3.8	3.2	1.9	1.4	1.3	0.0	81.6	6.8	11.6	0.065	0.503	23.659653	-99.096447

SAN LUIS POTOSI

4 CARR: CD. VALLES - SAN LUIS POTOSI

CLAVE: 24135

RUTA: MEX-070

AÑO: 2010

LUGAR	ESTACION				CLASIFICACION VEHICULAR EN PORCIENTO								COORDENADAS						
	KM	TE	SC	TDPA	A	B	C2	C3	T3S2	T3S3	T3S2R4	OTROS	A	B	C	K'	D	LATITUD	LONGITUD
CD. VALLES	0.00	3	0	9508	76.5	4.8	4.7	4.3	4.4	3.7	1.1	0.5	76.5	4.8	18.7	0.069	0.501	21.994362	-99.058837
T. DER. DAMIAN CARMONA	31.25	3	0	3617	77.2	4.9	4.7	4.0	4.0	3.5	1.2	0.5	77.2	4.9	17.9	0.068	0.506	21.925403	-99.228546
T. DER. CANOAS	75.40	1	0	3593	76.2	5.1	4.8	4.0	4.0	4.5	1.2	0.2	76.2	5.1	18.7	0.067	0.503	21.878237	-99.500682
X. C. CARDENAS - RAYON	93.00	1	0	4833	76.1	5.3	5.1	3.9	4.1	3.7	1.3	0.5	76.1	5.3	18.6	0.078	0.503	21.852551	-99.625807
X. C. CARDENAS - RAYON	93.00	3	0	5009	75.6	5.3	5.4	3.5	4.6	3.7	1.3	0.6	75.6	5.3	19.1	0.085	0.502	21.855236	-99.636785
RIO VERDE	133.76	1	0	7134	74.5	5.8	5.7	3.8	4.3	4.2	1.0	0.7	74.5	5.8	19.7	0.094	0.520	21.921467	-99.960947
RIO VERDE	133.76	3	0	14388	77.0	6.4	6.1	3.8	3.7	1.3	1.2	0.5	77.0	6.4	16.6	0.086	0.501	21.928431	-100.008347
T. DER. GUAXCAMA	161.04	3	0	3118	77.2	6.3	5.7	3.2	4.1	1.6	1.1	0.8	77.2	6.3	16.5	0.059	0.503	22.041531	-100.274592
T. IZQ. ZARAGOZA	239.50	1	0	3737	78.1	6.6	6.3	2.6	3.0	2.0	1.0	0.4	78.1	6.6	15.3	0.059	0.511	22.098413	-100.742297
T. IZQ. ZARAGOZA	239.50	3	0	4091	76.3	6.1	5.7	3.2	4.4	2.5	1.2	0.6	76.3	6.1	17.6	0.090	0.503	22.100630	-100.748236
X. LIB. OTE. DE SAN LUIS POTOSI	255.00	1	0	5260	74.9	6.7	6.2	3.8	4.7	1.8	1.2	0.7	74.9	6.7	18.4	0.095	0.503	22.127138	-100.822862
X. PERIFERICO DE SAN LUIS POTOSI	257.44	1	1	10545	79.6	6.0	5.7	1.2	4.7	1.3	1.2	0.3	79.6	6.0	14.4	0.096	0.503	22.154254	-100.898303
X. PERIFERICO DE SAN LUIS POTOSI SAN LUIS POTOSI	257.44 261.94	1 2	2	10439	79.4	5.4	5.0	1.5	5.3	1.5	1.3	0.6	79.4	5.4	15.2	0.092	0.503	22.153932	-100.898070

5 CARR: CD. VALLES - TAMPICO

CLAVE: 00138

RUTA: MEX-070

AÑO: 2010

LUGAR	ESTACION				CLASIFICACION VEHICULAR EN PORCIENTO								COORDENADAS						
	KM	TE	SC	TDPA	A	B	C2	C3	T3S2	T3S3	T3S2R4	OTROS	A	B	C	K'	D	LATITUD	LONGITUD
CD. VALLES	0.00	3	0	8254	77.0	5.0	4.9	6.5	3.2	2.1	1.0	0.3	77.0	5.0	18.0	0.085	0.503	21.976010	-98.959224
T. DER. SANTA ELENA	15.25	3	0	7275	77.2	5.2	4.7	6.5	3.1	2.1	0.9	0.3	77.2	5.2	17.6	0.066	0.501	21.961420	-98.877242
TAMUIN	29.60	1	0	5627	81.5	3.8	4.1	4.1	2.4	2.1	1.6	0.4	81.5	3.8	14.7	0.078	0.506	21.995327	-98.780067
EBANO	79.00	1	0	9609	76.1	5.8	5.3	2.9	4.7	2.8	2.2	0.2	76.1	5.8	18.1	0.075	0.506	22.204314	-98.405376
EBANO	79.00	3	0	5419	75.9	6.0	5.1	2.9	4.8	2.8	2.3	0.2	75.9	6.0	18.1	0.063	0.510	22.211433	-98.359856
LIM. EDOS. TERM. S.L.P. PPIA. VER.	83.57																		
T. DER. PANUCO	103.00	1	0	4927	76.7	5.9	4.8	2.8	4.4	2.9	2.3	0.2	76.7	5.9	17.4	0.068	0.524	22.155961	-98.154669
T. DER. PANUCO	103.00	3	0	6163	76.6	5.8	4.9	3.0	4.5	2.7	2.3	0.2	76.6	5.8	17.6	0.075	0.508	22.159426	-98.148012
T. C. ANAHUAC - EL PRIETO	128.40	1	0	7199	82.7	5.2	2.8	2.1	3.3	1.5	2.1	0.3	82.7	5.2	12.1	0.071	0.512	22.213459	-97.953828
T. C. ANAHUAC - EL PRIETO	128.40	3	1	6308	83.3	5.0	2.8	1.9	3.2	1.4	2.1	0.3	83.3	5.0	11.7	0.067	0.504	22.216457	-97.941442
T. C. ANAHUAC - EL PRIETO	128.40	3	2	6413	82.5	5.1	2.9	2.1	3.4	1.5	2.2	0.3	82.5	5.1	12.4	0.067	0.504	22.216457	-97.941442
LIM. EDOS. TERM. VER. PPIA. TAMP.	133.81																		
TAMPICO	138.00	1	0	15214	83.6	4.6	2.7	2.0	3.4	1.3	2.1	0.3	83.6	4.6	11.8	0.056	0.509	22.226269	-97.873854

SAN LUIS POTOSI

6 CARR: EL CLARIN - AGUA BUENA

CLAVE: 24283

RUTA: MEX-070

AÑO: 2010

LUGAR	ESTACION				CLASIFICACION VEHICULAR EN PORCIENTO								COORDENADAS						
	KM	TE	SC	TDPA	A	B	C2	C3	T3S2	T3S3	T3S2R4	OTROS	A	B	C	K'	D	LATITUD	LONGITUD
T. C. CD. VALLES - SAN LUIS POTOSI	0.00	3	0	1537	82.1	3.6	8.7	2.9	0.6	1.0	0.2	0.9	82.1	3.6	14.3	0.085	0.512	21.884104	-99.379601
AGUA BUENA	11.232	1	0	2161	81.3	3.4	9.4	2.0	1.3	1.2	0.9	0.5	81.3	3.4	15.3	0.086	0.500	21.953374	-99.390342

7 CARR: ENT. AHUALULCO - ENT. LA BONITA

CLAVE: 24258

RUTA: MEX-063

AÑO: 2010

LUGAR	ESTACION				CLASIFICACION VEHICULAR EN PORCIENTO								COORDENADAS						
	KM	TE	SC	TDPA	A	B	C2	C3	T3S2	T3S3	T3S2R4	OTROS	A	B	C	K'	D	LATITUD	LONGITUD
T. C. SAN LUIS POTOSI - ENT. ARCINAS	0.00	3	0	3441	78.4	6.7	8.8	1.7	2.3	0.2	1.1	0.8	78.4	6.7	14.9	0.080	0.504	22.320566	-101.165195
AHUALULCO	11.00	3	0	3313	77.5	9.8	8.2	1.7	1.4	0.1	1.0	0.3	77.5	9.8	12.7	0.073	0.513	22.410118	-101.159621
MOCTEZUMA	59.00	1	0	1806	80.9	6.1	8.3	1.6	1.2	0.3	1.3	0.3	80.9	6.1	13.0	0.089	0.505	22.736799	-101.083947
CHARCAS	100.00	1	0	1983	80.2	6.2	8.5	1.6	1.2	0.4	1.3	0.6	80.2	6.2	13.6	0.080	0.501	23.112597	-101.103801
CHARCAS	100.00	3	0	1716	79.5	6.5	8.1	1.6	2.7	0.4	0.6	0.6	79.5	6.5	14.0	0.090	0.500	23.130402	-101.100262
T. C. SAN LUIS POTOSI - MATEHUALA	169.90	1	0	1099	82.8	5.2	7.1	1.7	1.2	0.5	0.8	0.7	82.8	5.2	12.0	0.089	0.505	23.481799	-100.621021

8 CARR: ENT. DE ZARAGOZA - SAN FELIPE

CLAVE: 00240

RUTA: MEX-037

AÑO: 2010

LUGAR	ESTACION				CLASIFICACION VEHICULAR EN PORCIENTO								COORDENADAS						
	KM	TE	SC	TDPA	A	B	C2	C3	T3S2	T3S3	T3S2R4	OTROS	A	B	C	K'	D	LATITUD	LONGITUD
T. C. QUERETARO - SAN LUIS POTOSI	0.00	3	0	6409	66.4	5.6	5.4	3.7	15.6	1.8	1.2	0.3	66.4	5.6	28.0	0.101	0.500	21.964068	-100.820225
LIM. EDOS. TERM. S.L.P. PPIA. GTO.	32.00																		
SAN FELIPE	72.00	1	0	4103	67.0	5.7	5.3	3.7	15.1	1.8	1.1	0.3	67.0	5.7	27.3	0.088	0.502	21.481826	-101.152282

9 CARR: ENT. TULA - CD. VICTORIA

CLAVE: 00179

RUTA: MEX-101

AÑO: 2010

LUGAR	ESTACION				CLASIFICACION VEHICULAR EN PORCIENTO								COORDENADAS						
	KM	TE	SC	TDPA	A	B	C2	C3	T3S2	T3S3	T3S2R4	OTROS	A	B	C	K'	D	LATITUD	LONGITUD
T. C. ANTIGUO MORELOS - EL HUIZACHE	0.00	3	0	3412	67.6	0.6	2.7	4.1	7.5	7.6	9.0	0.9	67.6	0.6	31.8	0.073	0.519	22.737345	-99.968511
LIM. EDOS. TERM. S.L.P. PPIA. TAMP.	2.40																		
T. DER. TULA (1° ACCESO)	38.00	1	0	5196	67.7	4.6	1.8	2.4	8.9	5.9	7.9	0.8	67.7	4.6	27.7	0.076	0.503	22.978922	-99.738150
T. DER. TULA (2° ACCESO)	41.95	3	0	4130	69.8	4.8	1.8	2.6	7.8	5.8	6.8	0.6	69.8	4.8	25.4	0.076	0.510	23.021485	-99.713640
JAUMAVE	112.68	1	0	4885	70.8	4.5	1.7	2.5	7.2	6.9	5.8	0.6	70.8	4.5	24.7	0.077	0.509	23.403588	-99.394779
JAUMAVE	112.68	3	0	6159	67.2	4.8	2.6	3.5	9.2	4.9	7.1	0.7	67.2	4.8	28.0	0.073	0.507	23.418825	-99.373712
CD. VICTORIA	180.00	1	1	3198	72.1	3.6	0.5	1.6	8.1	6.7	6.8	0.6	72.1	3.6	24.3	0.071	0.512	23.710747	-99.176487
CD. VICTORIA	180.00	1	2	3353	72.0	3.5	0.6	1.7	8.0	6.6	6.8	0.8	72.0	3.5	24.5	0.073	0.512	23.710744	-99.176488

SAN LUIS POTOSI

10 CARR: JALPAN DE SERRA - RIO VERDE

CLAVE: 00265

RUTA: MEX-069

AÑO: 2010

LUGAR	ESTACION				CLASIFICACION VEHICULAR EN PORCIENTO								COORDENADAS						
	KM	TE	SC	TDPA	A	B	C2	C3	T3S2	T3S3	T3S2R4	OTROS	A	B	C	K'	D	LATITUD	LONGITUD
JALPAN DE SERRA	0.00	3	0	4493	87.6	3.0	4.2	0.3	2.8	0.5	1.2	0.4	87.6	3.0	9.4	0.075	0.503	21.233210	-99.479338
T. IZO. CONCA	35.01	1	0	2000	88.9	3.0	4.0	1.2	1.3	0.3	0.9	0.4	88.9	3.0	8.1	0.065	0.508	21.448974	-99.630478
ARROYO SECO	48.60	1	0	1184	88.8	3.3	4.1	1.4	0.8	0.5	0.6	0.5	88.8	3.3	7.9	0.081	0.500	21.540579	-99.686867
LIM. EDOS. TERM. QRO. PPIA. S.L.P.	52.27																		
SAN CIRO DE ACOSTA	69.42	1	0	1250	86.7	3.4	3.7	1.9	1.9	1.1	0.6	0.7	86.7	3.4	9.9	0.105	0.505	21.649345	-99.810335
SAN CIRO DE ACOSTA	69.42	3	0	2971	86.5	3.3	4.2	2.1	1.4	1.1	0.9	0.5	86.5	3.3	10.2	0.064	0.500	21.664481	-99.829506
RIO VERDE	105.425	1	0	5809	85.1	3.3	3.7	2.4	2.4	1.6	0.9	0.6	85.1	3.3	11.6	0.068	0.502	21.884260	-99.976414

11 CARR: LIBRAMIENTO DE CD. VALLES

CLAVE: 24205

RUTA: MEX-070

AÑO: 2010

LUGAR	ESTACION				CLASIFICACION VEHICULAR EN PORCIENTO								COORDENADAS						
	KM	TE	SC	TDPA	A	B	C2	C3	T3S2	T3S3	T3S2R4	OTROS	A	B	C	K'	D	LATITUD	LONGITUD
T. C. CD. VALLES - SAN LUIS POTOSI	0.00	3	0	6733	72.4	6.1	8.6	3.2	5.6	2.6	1.1	0.4	72.4	6.1	21.5	0.067	0.516	21.983370	-99.032890
T. C. CD. VALLES - TAMPICO	11.54	1	0	4508	70.3	6.0	7.7	3.4	6.6	3.5	1.8	0.7	70.3	6.0	23.7	0.062	0.511	21.973533	-98.966387

12 CARR: LIBRAMIENTO DE VILLA DE REYES

CLAVE: 24010

RUTA: MEX-037

AÑO: 2010

LUGAR	ESTACION				CLASIFICACION VEHICULAR EN PORCIENTO								COORDENADAS						
	KM	TE	SC	TDPA	A	B	C2	C3	T3S2	T3S3	T3S2R4	OTROS	A	B	C	K'	D	LATITUD	LONGITUD
T. C. ENT. ZARAGOZA - SAN FELIPE	0.00	3	0	4910	77.8	6.4	7.1	4.7	1.6	1.7	0.2	0.5	77.8	6.4	15.8	0.083	0.522	21.799164	-100.941696
T. C. VILLA DE REYES - BLEDOS	3.10																		

13 CARR: LIBRAMIENTO VILLA DE ARRIAGA

CLAVE:

RUTA: MEX-080

AÑO: 2010

LUGAR	ESTACION				CLASIFICACION VEHICULAR EN PORCIENTO								COORDENADAS						
	KM	TE	SC	TDPA	A	B	C2	C3	T3S2	T3S3	T3S2R4	OTROS	A	B	C	K'	D	LATITUD	LONGITUD
T.C. SAN LUIS POTOSI - LAGOS DE MORENO	0.00	3	0	3484	65.6	4.3	4.3	5.9	11.6	4.9	2.5	0.9	65.6	4.3	30.1	0.071	0.501	21.924160	-101.371758
T.C. SAN LUIS POTOSI - LAGOS DE MORENO	5.00																		

14 CARR: MATEHUALA - ENT. PUERTO MEXICO

CLAVE: 00405

RUTA: MEX-057

AÑO: 2010

LUGAR	ESTACION				CLASIFICACION VEHICULAR EN PORCIENTO								COORDENADAS						
	KM	TE	SC	TDPA	A	B	C2	C3	T3S2	T3S3	T3S2R4	OTROS	A	B	C	K'	D	LATITUD	LONGITUD
MATEHUALA	0.00	3	0	12851	65.0	5.9	4.6	4.0	10.4	4.7	4.7	0.7	65.0	5.9	29.1	0.065	0.504	23.662528	-100.635111
T. IZO. CEDRAL	8.47	1	1	5643	64.9	5.5	4.6	4.0	10.8	4.8	4.7	0.7	64.9	5.5	29.6	0.061	0.515	23.695722	-100.618694

SAN LUIS POTOSI

14 CARR: MATEHUALA - ENT. PUERTO MEXICO

CLAVE: 00405

RUTA: MEX-057

AÑO: 2010

LUGAR	ESTACION				CLASIFICACION VEHICULAR EN PORCIENTO								COORDENADAS						
	KM	TE	SC	TDPA	A	B	C2	C3	T3S2	T3S3	T3S2R4	OTROS	A	B	C	K'	D	LATITUD	LONGITUD
T. IZQ. CEDRAL	8.47	1	2	5993	65.4	5.6	4.9	3.8	10.2	4.7	4.7	0.7	65.4	5.6	29.0	0.056	0.515	23.695722	-100.618694
T. IZQ. CEDRAL	8.47	3	1	2716	64.5	5.7	4.7	3.9	10.7	4.7	5.1	0.7	64.5	5.7	29.8	0.073	0.518	23.700174	-100.616493
T. IZQ. CEDRAL	8.47	3	2	2919	64.2	6.0	5.0	3.7	10.7	4.9	4.8	0.7	64.2	6.0	29.8	0.074	0.518	23.700168	-100.616507
LIM. EDOS. TERM. S.L.P. PPIA. N.L.	24.64																		
SANTA ANA	59.65	1	1	6131	65.7	5.5	4.7	3.7	10.2	4.7	4.8	0.7	65.7	5.5	28.8	0.066	0.507	24.086848	-100.383926
SANTA ANA	59.65	1	2	5950	65.3	5.3	4.9	3.6	10.7	4.4	5.1	0.7	65.3	5.3	29.4	0.070	0.507	24.086848	-100.383926
T. DER. LINARES	128.99	3	1	6066	64.7	5.8	4.8	3.9	10.1	4.9	5.1	0.7	64.7	5.8	29.5	0.067	0.508	24.680165	-100.300162
T. DER. LINARES	128.99	3	2	5873	64.0	5.8	5.1	3.7	10.6	4.9	5.2	0.7	64.0	5.8	30.2	0.073	0.508	24.680165	-100.300162
SAN RAFAEL	177.18	1	1	6472	65.9	5.7	4.5	3.6	10.2	4.8	4.6	0.7	65.9	5.7	28.4	0.068	0.504	25.020248	-100.541784
SAN RAFAEL	177.18	1	2	6366	65.9	5.4	4.8	3.7	10.1	4.6	4.8	0.7	65.9	5.4	28.7	0.065	0.504	25.020248	-100.541784
ENT. PUERTO MEXICO	205.97																		

15 CARR: PORTEZUELO - CD. VALLES

CLAVE: 00023

RUTA: MEX-085

AÑO: 2010

LUGAR	ESTACION				CLASIFICACION VEHICULAR EN PORCIENTO								COORDENADAS						
	KM	TE	SC	TDPA	A	B	C2	C3	T3S2	T3S3	T3S2R4	OTROS	A	B	C	K'	D	LATITUD	LONGITUD
PORTEZUELO	0.00	3	0	5278	79.3	6.6	5.2	7.3	0.7	0.5	0.0	0.4	79.3	6.6	14.1	0.062	0.501	20.490857	-99.301841
T. DER. TASQUILLO (2° ACCESO)	10.50	1	0	3477	79.4	6.4	5.1	7.5	0.7	0.5	0.0	0.4	79.4	6.4	14.2	0.058	0.501	20.551154	-99.323835
T. IZQ. ZIMAPAN (1° ACCESO)	32.00	1	0	3950	80.9	6.0	4.8	6.7	0.7	0.5	0.0	0.4	80.9	6.0	13.1	0.079	0.503	20.703390	-99.334905
T. IZQ. ZIMAPAN (1° ACCESO)	32.00	3	0	1713	80.7	6.0	5.1	6.6	0.7	0.5	0.0	0.4	80.7	6.0	13.3	0.069	0.517	20.706207	-99.336273
LA ESTANCIA	41.00	3	0	1401	80.8	6.3	4.6	6.7	0.7	0.5	0.0	0.4	80.8	6.3	12.9	0.066	0.506	20.777845	-99.309597
TRANCAS	51.00	3	0	1812	79.3	6.3	5.2	7.6	0.7	0.5	0.0	0.4	79.3	6.3	14.4	0.061	0.501	20.797577	-99.266845
JACALA	98.60	3	0	1911	80.5	6.4	4.6	6.9	0.7	0.5	0.0	0.4	80.5	6.4	13.1	0.081	0.501	21.002971	-99.184803
ZACATE GRANDE	143.10	1	0	1316	80.1	6.0	5.2	7.1	0.7	0.5	0.0	0.4	80.1	6.0	13.9	0.066	0.500	21.117745	-99.002977
T. IZQ. PISAFLORES	154.00	3	0	1831	79.2	6.5	5.4	7.3	0.7	0.5	0.0	0.4	79.2	6.5	14.3	0.090	0.500	21.153192	-98.938918
LIM. EDOS. TERM. HGO. PPIA. S.L.P.	168.63																		
TAMAZUNCHALE	192.80	1	0	4133	79.3	6.5	5.2	7.4	0.7	0.5	0.0	0.4	79.3	6.5	14.2	0.076	0.501	21.260393	-98.801525
T. IZQ. XILITLA	228.75	1	0	4302	80.6	6.1	4.9	6.8	0.7	0.5	0.0	0.4	80.6	6.1	13.3	0.071	0.505	21.441511	-98.924566
T. IZQ. XILITLA	228.75	3	0	3929	79.6	6.6	5.1	7.1	0.7	0.5	0.0	0.4	79.6	6.6	13.8	0.073	0.506	21.445484	-98.928758
T. IZQ. AQUISMON	252.50	1	0	4583	79.8	6.2	5.3	7.1	0.7	0.5	0.0	0.4	79.8	6.2	14.0	0.079	0.504	21.621901	-98.987549
AGUA HEDIONDA	265.00	1	0	4626	80.1	6.4	4.8	7.1	0.7	0.5	0.0	0.4	80.1	6.4	13.5	0.069	0.506	21.727747	-98.964029
CD. VALLES	300.00	1	0	7942	79.7	6.2	5.0	7.5	0.7	0.5	0.0	0.4	79.7	6.2	14.1	0.073	0.503	21.957194	-98.999543





SAN LUIS POTOSI

17 CARR: RAMAL A AEROPUERTO DE S. L. P.

CLAVE: 24206

RUTA: MEX-057

AÑO: 2010

LUGAR	ESTACION				CLASIFICACION VEHICULAR EN PORCIENTO								COORDENADAS						
	KM	TE	SC	TDPA	A	B	C2	C3	T3S2	T3S3	T3S2R4	OTROS	A	B	C	K'	D	LATITUD	LONGITUD
T. C. SAN LUIS POTOSI - MATEHUALA	0.00	3	0	3859	84.3	6.3	5.8	2.2	0.9	0.3	0.0	0.2	84.3	6.3	9.4	0.073	0.503	22.222319	-100.912499
AEROPUERTO DE S. L. P.	6.00																		

18 CARR: RAMAL A CARDENAS

CLAVE:

RUTA: MEX-070

AÑO: 2010

LUGAR	ESTACION				CLASIFICACION VEHICULAR EN PORCIENTO								COORDENADAS						
	KM	TE	SC	TDPA	A	B	C2	C3	T3S2	T3S3	T3S2R4	OTROS	A	B	C	K'	D	LATITUD	LONGITUD
T. C. (CD. VALLES - SAN LUIS POTOSI)	0.00																		
CARDENAS	15.80	1	0	2389	80.4	7.8	6.5	1.4	1.3	0.9	0.9	0.8	80.4	7.8	11.8	0.082	0.503	21.983935	-99.647665

19 CARR: RAMAL A OJO DE AGUA

CLAVE: 24023

RUTA: MEX-062

AÑO: 2010

LUGAR	ESTACION				CLASIFICACION VEHICULAR EN PORCIENTO								COORDENADAS						
	KM	TE	SC	TDPA	A	B	C2	C3	T3S2	T3S3	T3S2R4	OTROS	A	B	C	K'	D	LATITUD	LONGITUD
T. C. ENT. CARBONERA - ENT. SAN TIBURCIO	0.00	3	0	2652	85.2	5.1	6.1	0.7	1.4	0.5	0.2	0.8	85.2	5.1	9.7	0.083	0.546	23.718699	-100.650706
T. C. ENT. CARBONERA - ENT. SAN TIBURCIO	6.23																		

20 CARR: RAMAL A RAYON

CLAVE:

RUTA: MEX-070

AÑO: 2010

LUGAR	ESTACION				CLASIFICACION VEHICULAR EN PORCIENTO								COORDENADAS						
	KM	TE	SC	TDPA	A	B	C2	C3	T3S2	T3S3	T3S2R4	OTROS	A	B	C	K'	D	LATITUD	LONGITUD
T. C. (CD. VALLES - SAN LUIS POTOSI)	0.00																		
RAYON	1.50	1	0	3513	87.7	1.6	4.0	2.1	1.2	1.6	1.1	0.7	87.7	1.6	10.7	0.062	0.502	21.852729	-99.628648

21 CARR: SAN JUAN DEL RIO - XILITLA

CLAVE: 00183

RUTA: MEX-120

AÑO: 2010

LUGAR	ESTACION				CLASIFICACION VEHICULAR EN PORCIENTO								COORDENADAS						
	KM	TE	SC	TDPA	A	B	C2	C3	T3S2	T3S3	T3S2R4	OTROS	A	B	C	K'	D	LATITUD	LONGITUD
SAN JUAN DEL RIO	0.00																		
T. DER. LIBRAMIENTO DE SAN JUAN DEL RIO	5.20	3	1	7848	80.6	2.1	4.1	2.0	5.5	2.2	2.8	0.7	80.6	2.1	17.3	0.075	0.506	20.436131	-99.968325
T. DER. LIBRAMIENTO DE SAN JUAN DEL RIO	5.20	3	2	7671	79.6	2.3	4.6	2.2	5.8	2.1	2.7	0.7	79.6	2.3	18.1	0.077	0.506	20.436131	-99.968325
T. DER. TEQUISQUIAPAN	19.80	1	1	5854	80.5	4.0	7.6	1.7	4.2	0.8	0.2	1.0	80.5	4.0	15.5	0.086	0.501	20.516450	-99.901146
T. DER. TEQUISQUIAPAN	19.80	1	2	5836	79.3	6.1	7.6	1.3	3.6	0.8	0.3	1.0	79.3	6.1	14.6	0.095	0.501	20.516450	-99.901146
T. DER. TEQUISQUIAPAN	19.80	3	0	11771	85.0	2.6	5.4	1.4	2.4	0.9	0.6	1.7	85.0	2.6	12.4	0.074	0.506	20.543537	-99.902142
EZEQUIEL MONTES	36.50	1	0	9792	78.5	2.5	4.7	2.5	5.9	2.7	2.5	0.7	78.5	2.5	19.0	0.072	0.501	20.646938	-99.904907

SAN LUIS POTOSI

21 CARR: SAN JUAN DEL RIO - XILITLA

CLAVE: 00183

RUTA: MEX-120

AÑO: 2010

LUGAR	ESTACION				CLASIFICACION VEHICULAR EN PORCIENTO								COORDENADAS						
	KM	TE	SC	TDPA	A	B	C2	C3	T3S2	T3S3	T3S2R4	OTROS	A	B	C	K'	D	LATITUD	LONGITUD
EZEQUIEL MONTES	36.50	3	0	8670	79.4	2.2	4.4	2.0	5.6	2.9	2.6	0.9	79.4	2.2	18.4	0.070	0.502	20.677131	-99.891078
CADEREYTA	47.90	3	0	8380	80.7	2.2	4.5	2.1	5.3	2.2	2.4	0.6	80.7	2.2	17.1	0.073	0.510	20.701624	-99.807901
VIZARRON DE MONTES	73.50	3	0	2868	81.1	2.1	4.4	2.1	5.2	2.1	2.4	0.6	81.1	2.1	16.8	0.078	0.505	20.842699	-99.715484
T. DER. SAN JOAQUIN	79.50	3	0	1107	80.4	2.3	4.4	2.2	5.2	2.3	2.6	0.6	80.4	2.3	17.3	0.089	0.548	20.884347	-99.706795
T. IZO. HIGUERILLAS	89.10	3	0	1368	79.7	2.2	4.8	2.1	5.7	2.3	2.6	0.6	79.7	2.2	18.1	0.089	0.520	20.950576	-99.749107
T. IZO. PEÑAMILLER	103.00	3	0	1084	83.4	2.3	4.0	1.3	5.2	1.7	1.3	0.8	83.4	2.3	14.3	0.086	0.507	21.038987	-99.739579
PINAL DE AMOLES	140.00	3	0	1368	83.2	2.9	3.8	1.5	4.7	1.8	1.2	0.9	83.2	2.9	13.9	0.083	0.511	21.136901	-99.621002
JALPAN DE SERRA	179.30	3	0	4732	83.9	2.7	4.6	2.3	3.4	1.4	1.2	0.5	83.9	2.7	13.4	0.076	0.518	21.213445	-99.458647
LANDA DE MATAMOROS	201.60	3	0	2233	82.6	2.9	5.1	2.7	3.7	1.4	1.1	0.5	82.6	2.9	14.5	0.086	0.503	21.187102	-99.311159
EL LOBO	236.40	3	0	1035	84.0	2.6	5.3	2.3	3.0	1.3	1.0	0.5	84.0	2.6	13.4	0.099	0.505	21.292351	-99.116501
LIM. EDOS. TERM. QRO. PPIA. S.L.P.	238.33																		
XILITLA	266.40	1	0	1404	77.7	8.1	6.6	2.8	1.0	1.7	1.6	0.5	77.7	8.1	14.2	0.096	0.503	21.378749	-98.998712
T. C. PORTEZUELO - CD. VALLES	276.979	1	0	1798	76.5	7.0	10.0	1.9	1.6	0.7	1.4	0.9	76.5	7.0	16.5	0.095	0.505	21.443522	-98.929346

22 CARR: SAN LUIS POTOSI - ENT. ARCINAS

CLAVE: 00134

RUTA: MEX-049

AÑO: 2010

LUGAR	ESTACION				CLASIFICACION VEHICULAR EN PORCIENTO								COORDENADAS						
	KM	TE	SC	TDPA	A	B	C2	C3	T3S2	T3S3	T3S2R4	OTROS	A	B	C	K'	D	LATITUD	LONGITUD
T. C. SAN LUIS POTOSI - MATEHUALA	0.00																		
T. IZO. PERIFERICO DE SAN LUIS POTOSI	9.35	3	0	12805	78.8	4.9	5.1	2.5	4.6	2.1	1.6	0.4	78.8	4.9	16.3	0.079	0.501	22.213543	-101.044942
MEXQUITIC	22.50	1	0	8981	72.3	5.3	5.2	4.1	6.7	2.0	4.2	0.2	72.3	5.3	22.4	0.098	0.505	22.243355	-101.096085
T. DER. CHARCAS	30.90	1	1	4421	71.7	5.6	5.1	4.0	7.2	2.0	4.2	0.2	71.7	5.6	22.7	0.087	0.508	22.311199	-101.159708
T. DER. CHARCAS	30.90	1	2	4494	72.1	5.5	5.3	3.9	6.9	2.0	4.1	0.2	72.1	5.5	22.4	0.080	0.508	22.311238	-101.159704
LIM. EDOS. TERM. S.L.P. PPIA. ZAC.	55.13																		
LIM. EDOS. TERM. ZAC. PPIA. S.L.P.	89.30																		
T. DER. SALINAS	99.00	1	0	4959	40.9	4.7	9.2	9.9	16.8	7.4	9.9	1.2	40.9	4.7	54.4	0.088	0.506	22.602708	-101.705182
T. DER. SALINAS	99.00	3	0	4878	40.0	4.3	8.9	9.7	18.0	7.5	10.4	1.2	40.0	4.3	55.7	0.093	0.520	22.619289	-101.739978
LIM. EDOS. TERM. S.L.P. PPIA. ZAC.	122.47																		
T. IZO. PANFILO NATERA	139.00	1	0	5782	41.7	4.4	8.5	9.4	17.4	7.1	10.3	1.2	41.7	4.4	53.9	0.063	0.505	22.678790	-102.097734
ENT. ARCINAS	162.98	1	0	6034	42.1	4.5	9.0	9.3	17.2	7.1	9.7	1.1	42.1	4.5	53.4	0.074	0.500	22.719706	-102.325219

SAN LUIS POTOSI

23 CARR: SAN LUIS POTOSI - LAGOS DE MORENO

CLAVE: 00133

RUTA: MEX-070-080

AÑO: 2010

LUGAR	ESTACION				CLASIFICACION VEHICULAR EN PORCIENTO								COORDENADAS						
	KM	TE	SC	TDPA	A	B	C2	C3	T3S2	T3S3	T3S2R4	OTROS	A	B	C	K'	D	LATITUD	LONGITUD
SAN LUIS POTOSI	0.00	3	1	11762	70.3	2.6	7.1	5.9	8.5	3.7	1.1	0.8	70.3	2.6	27.1	0.077	0.501	22.133899	-101.030894
SAN LUIS POTOSI	0.00	3	2	11820	71.4	2.6	7.2	5.7	7.9	3.4	1.1	0.7	71.4	2.6	26.0	0.073	0.501	22.133904	-101.030880
X. PERIFERICO SAN LUIS POTOSI	8.41	3	0	8447	70.9	2.7	7.1	5.8	8.0	3.7	1.0	0.8	70.9	2.7	26.4	0.069	0.512	22.129055	-101.038610
EL TEPETATE	41.90	1	0	5366	69.7	2.9	7.5	5.8	8.5	3.7	1.1	0.8	69.7	2.9	27.4	0.080	0.507	22.023957	-101.226608
EL TEPETATE	41.90	3	0	2545	70.7	2.9	7.4	5.5	8.0	3.6	1.1	0.8	70.7	2.9	26.4	0.076	0.506	22.011020	-101.244603
VILLA DE ARRIAGA	61.90	3	0	2114	68.8	2.8	7.8	5.8	8.8	4.0	1.2	0.8	68.8	2.8	28.4	0.076	0.506	21.902803	-101.395046
LIM. EDOS. TERM. S.L.P. PPIA. ZAC.	70.23																		
LIM. EDOS. TERM. ZAC. PPIA. JAL.	82.94																		
OJUELOS DE JALISCO	83.20	1	0	6985	79.3	4.5	6.1	3.2	3.2	2.0	0.9	0.8	79.3	4.5	16.2	0.064	0.510	21.875574	-101.572502
OJUELOS DE JALISCO	83.20	3	0	5401	80.3	4.3	6.0	2.8	3.1	2.0	0.8	0.7	80.3	4.3	15.4	0.061	0.508	21.853960	-101.593920
X. C. LEON - AGUASCALIENTES	146.90	1	0	6382	79.9	4.4	6.0	2.9	3.2	2.0	0.9	0.7	79.9	4.4	15.7	0.073	0.512	21.376605	-101.892836
LAGOS DE MORENO	150.00																		

24 CARR: SAN LUIS POTOSI - MATEHUALA

CLAVE: 24508

RUTA: MEX-057

AÑO: 2010

LUGAR	ESTACION				CLASIFICACION VEHICULAR EN PORCIENTO								COORDENADAS						
	KM	TE	SC	TDPA	A	B	C2	C3	T3S2	T3S3	T3S2R4	OTROS	A	B	C	K'	D	LATITUD	LONGITUD
SAN LUIS POTOSI	0.00																		
X. PERIFERICO DE SAN LUIS POTOSI	7.36	3	1	10711	65.1	5.6	4.8	3.8	10.4	4.7	4.9	0.7	65.1	5.6	29.3	0.066	0.502	22.207591	-100.919501
X. PERIFERICO DE SAN LUIS POTOSI	7.36	3	2	10800	64.6	5.7	4.9	3.4	10.9	4.6	5.1	0.8	64.6	5.7	29.7	0.068	0.502	22.207655	-100.919515
VENTURA (X. NUEVO LIBRAMIENTO DE SLP.)	33.20	3	1	10017	62.9	5.9	5.2	3.6	10.7	4.9	6.1	0.7	62.9	5.9	31.2	0.077	0.502	22.343706	-100.796635
VENTURA (X. NUEVO LIBRAMIENTO DE SLP.)	33.20	3	2	10095	65.1	6.8	5.1	3.4	10.2	4.3	4.5	0.6	65.1	6.8	28.1	0.079	0.502	22.366088	-100.789065
T. DER. VILLA HIDALGO	45.94	1	1	9632	62.0	7.8	5.3	3.8	10.5	5.3	4.9	0.4	62.0	7.8	30.2	0.077	0.503	22.422567	-100.715275
T. DER. VILLA HIDALGO	45.94	1	2	9746	58.9	8.4	5.9	3.6	11.9	5.8	5.1	0.4	58.9	8.4	32.7	0.077	0.503	22.422551	-100.715272
T. IZQ. VILLA ARISTA	61.35	1	1	9076	59.1	8.6	7.0	3.5	10.8	5.3	5.2	0.5	59.1	8.6	32.3	0.085	0.501	22.566895	-100.639284
T. IZQ. VILLA ARISTA	61.35	1	2	9114	56.5	8.9	7.2	3.4	11.1	5.2	7.1	0.6	56.5	8.9	34.6	0.082	0.501	22.566884	-100.639278
T. DER. GUADALCAZAR	75.70	1	1	8022	55.7	9.4	7.4	3.3	11.2	5.1	7.2	0.7	55.7	9.4	34.9	0.088	0.503	22.642074	-100.517607
T. DER. GUADALCAZAR	75.70	1	2	7927	56.1	9.7	8.3	4.0	9.7	4.9	6.6	0.7	56.1	9.7	34.2	0.086	0.503	22.642085	-100.517578
T. DER. GUADALCAZAR	75.70	3	1	7980	55.6	9.9	8.6	4.7	9.8	4.7	6.3	0.4	55.6	9.9	34.5	0.084	0.500	22.643329	-100.516531
T. DER. GUADALCAZAR	75.70	3	2	7969	60.8	9.7	5.5	2.9	9.4	4.8	6.2	0.7	60.8	9.7	29.5	0.086	0.500	22.643317	-100.516539
T. DER. CD. DEL MAIZ	109.62	3	1	6672	61.2	8.9	6.3	3.2	8.6	5.2	6.2	0.4	61.2	8.9	29.9	0.076	0.510	22.941582	-100.461891
T. DER. CD. DEL MAIZ	109.62	3	2	6957	60.4	8.8	6.7	3.3	8.9	5.1	6.3	0.5	60.4	8.8	30.8	0.072	0.510	22.941579	-100.461887
LA BONITA	171.40	1	1	4560	59.8	8.9	6.9	3.5	9.1	5.0	6.1	0.7	59.8	8.9	31.3	0.071	0.505	23.477720	-100.613263
LA BONITA	171.40	1	2	4652	59.9	8.4	6.8	3.6	9.6	4.6	6.6	0.5	59.9	8.4	31.7	0.078	0.505	23.477782	-100.613299
MATEHUALA	187.39	1	1	6107	59.8	8.5	6.9	3.7	9.4	4.7	6.4	0.6	59.8	8.5	31.7	0.078	0.504	23.577593	-100.632070

SAN LUIS POTOSI

24 CARR: SAN LUIS POTOSI - MATEHUALA

CLAVE: 24508

RUTA: MEX-057

AÑO: 2010

LUGAR	ESTACION				CLASIFICACION VEHICULAR EN PORCIENTO								COORDENADAS						
	KM	TE	SC	TDPA	A	B	C2	C3	T3S2	T3S3	T3S2R4	OTROS	A	B	C	K'	D	LATITUD	LONGITUD
MATEHUALA	187.39	1	2	6202	58.1	7.6	8.1	3.8	8.6	4.4	8.7	0.7	58.1	7.6	34.3	0.074	0.504	23.577602	-100.632069

25 CARR: T. C. (ENT. EL HUIZACHE- ANT. MORELOS)-EL SALTO

CLAVE: 24204

RUTA: MEX-080

AÑO: 2010

LUGAR	ESTACION				CLASIFICACION VEHICULAR EN PORCIENTO								COORDENADAS						
	KM	TE	SC	TDPA	A	B	C2	C3	T3S2	T3S3	T3S2R4	OTROS	A	B	C	K'	D	LATITUD	LONGITUD
T. C. EL HUIZACHE - ANT. MORELOS	0.00	3	0	2325	83.2	1.8	2.6	7.7	1.8	0.9	1.5	0.5	83.2	1.8	15.0	0.068	0.513	22.541710	-99.313693
SALTO DEL AGUA	12.00																		

26 CARR: T. C. (ORO - S.L.P.) - TIERRA NUEVA

CLAVE: 24203

RUTA: MEX-057

AÑO: 2010

LUGAR	ESTACION				CLASIFICACION VEHICULAR EN PORCIENTO								COORDENADAS						
	KM	TE	SC	TDPA	A	B	C2	C3	T3S2	T3S3	T3S2R4	OTROS	A	B	C	K'	D	LATITUD	LONGITUD
T. C. QUERETARO - SAN LUIS POTOSI	0.00	3	0	1261	75.6	4.7	4.8	5.2	6.2	2.4	0.1	1.0	75.6	4.7	19.7	0.076	0.507	21.694100	-100.685188
TIERRA NUEVA	13.10																		

27 CARR: T. C. (S.L.P. - MATEHUALA) - VILLA HIDALGO

CLAVE: 24619

RUTA: MEX-057

AÑO: 2010

LUGAR	ESTACION				CLASIFICACION VEHICULAR EN PORCIENTO								COORDENADAS						
	KM	TE	SC	TDPA	A	B	C2	C3	T3S2	T3S3	T3S2R4	OTROS	A	B	C	K'	D	LATITUD	LONGITUD
PASO POR VILLA HIDALGO	0.00	3	0	1939	70.9	8.8	6.6	3.2	4.3	2.9	2.8	0.5	70.9	8.8	20.3	0.070	0.502	22.429544	-100.706388
PASO POR VILLA HIDALGO	10.20	1	0	2053	71.6	9.1	6.2	3.0	4.1	3.3	1.6	1.1	71.6	9.1	19.3	0.067	0.504	22.496956	-100.665710

28 CARR: TAMAZUNCHALE - SAN FELIPE ORIZATLAN

CLAVE: 00609

RUTA: MEX-102

AÑO: 2010

LUGAR	ESTACION				CLASIFICACION VEHICULAR EN PORCIENTO								COORDENADAS						
	KM	TE	SC	TDPA	A	B	C2	C3	T3S2	T3S3	T3S2R4	OTROS	A	B	C	K'	D	LATITUD	LONGITUD
T. C. PORTEZUELO - CD. VALLES	0.00	3	0	8185	87.7	3.5	2.4	1.1	2.3	1.2	1.2	0.6	87.7	3.5	8.8	0.066	0.504	21.251222	-98.762115
LIM. EDOS. TERM. S.L.P. PPIA. HGO.	18.50																		
SAN FELIPE ORIZATLAN	27.10	1	0	3049	86.2	4.1	2.8	1.1	2.6	1.0	1.5	0.7	86.2	4.1	9.7	0.072	0.510	21.164464	-98.610690

SAN LUIS POTOSI

29 CARR: LIBRAMIENTO DE MATEHUALA (CUOTA)

CLAVE:

RUTA: MEX-D

AÑO: 2010

LUGAR	ESTACION				CLASIFICACION VEHICULAR EN PORCIENTO								COORDENADAS						
	KM	TE	SC	TDPA	A	B	C2	C3	T3S2	T3S3	T3S2R4	OTROS	A	B	C	K'	D	LATITUD	LONGITUD
T.C. SAN LUIS POTOSI - MATEHUALA	0.00	3	0	7191	37.2	3.7	5.2	3.9	40.4	2.6	6.2	0.8	37.2	3.7	59.1	0.081	0.508	23.596236	-100.628730
CASETA DE COBRO MATEHUALA	7.00	2	0	8212	38.8	3.9	5.2	3.9	39.0	2.5	5.9	0.8	38.8	3.9	57.3			23.664155	-100.607286
T.C. MATEHUALA - ENT. PUERTO MEXICO	14.20	1	0	7735	40.3	4.0	5.1	3.7	37.7	2.4	6.0	0.8	40.3	4.0	55.7	0.075	0.502	23.694306	-100.611909

30 CARR: LIBRAMIENTO ORIENTE DE SAN LUIS POTOSI (CUOTA)

CLAVE: 24009

RUTA: MEX-057D

AÑO: 2010

LUGAR	ESTACION				CLASIFICACION VEHICULAR EN PORCIENTO								COORDENADAS						
	KM	TE	SC	TDPA	A	B	C2	C3	T3S2	T3S3	T3S2R4	OTROS	A	B	C	K'	D	LATITUD	LONGITUD
T. C. QUERETARO - SAN LUIS POTOSI	0.00																		
X. C. CD. VALLES - SAN LUIS POTOSI	11.20	1	1	4359	32.3	3.4	5.1	4.3	41.5	4.9	7.6	0.9	32.3	3.4	64.3	0.100	0.503	22.127615	-100.824794
X. C. CD. VALLES - SAN LUIS POTOSI	11.20	1	2	4305	32.8	3.5	5.1	4.3	40.7	5.1	7.6	0.9	32.8	3.5	63.7	0.100	0.503	22.127562	-100.824896
CASETA DE COBRO SAN NICOLAS DE LOS JASSOS	11.22	2	0	10825	33.8	3.4	5.0	4.2	40.0	4.9	7.8	0.9	33.8	3.4	62.8			22.129766	-100.825103
T. C. SAN LUIS POTOSI - MATEHUALA	33.76	1	1	4446	33.7	3.5	4.9	4.3	39.7	5.0	8.0	0.9	33.7	3.5	62.8	0.101	0.500	22.322918	-100.802065
T. C. SAN LUIS POTOSI - MATEHUALA	33.76	1	2	4442	33.8	3.4	4.9	4.1	40.1	4.9	7.9	0.9	33.8	3.4	62.8	0.100	0.500	22.322902	-100.802059

31 CARR: CARDENAS - CD. DEL MAIZ

CLAVE:

RUTA: SLP-005

AÑO: 2010

LUGAR	ESTACION				CLASIFICACION VEHICULAR EN PORCIENTO								COORDENADAS						
	KM	TE	SC	TDPA	A	B	C2	C3	T3S2	T3S3	T3S2R4	OTROS	A	B	C	K'	D	LATITUD	LONGITUD
CARDENAS	0.00																		
CD. DEL MAIZ	55.70	1	0	2505	88.3	2.8	3.3	2.7	0.1	1.5	0.4	0.9	88.3	2.8	8.9	0.102	0.504	22.389335	-99.611765

32 CARR: CHARCAS - VILLA SANTO DOMINGO

CLAVE: 24624

RUTA: SLP-017

AÑO: 2010

LUGAR	ESTACION				CLASIFICACION VEHICULAR EN PORCIENTO								COORDENADAS						
	KM	TE	SC	TDPA	A	B	C2	C3	T3S2	T3S3	T3S2R4	OTROS	A	B	C	K'	D	LATITUD	LONGITUD
CHARCAS	0.00	3	0	1030	78.8	4.9	7.0	7.2	0.2	0.2	1.5	0.2	78.8	4.9	16.3	0.078	0.504	23.137626	-101.130483
VILLA SANTO DOMINGO	75.00																		

33 CARR: MATEHUALA - LA PAZ

CLAVE: 24621

RUTA: SLP-020

AÑO: 2010

LUGAR	ESTACION				CLASIFICACION VEHICULAR EN PORCIENTO								COORDENADAS						
	KM	TE	SC	TDPA	A	B	C2	C3	T3S2	T3S3	T3S2R4	OTROS	A	B	C	K'	D	LATITUD	LONGITUD
MATEHUALA	0.00	3	0	3589	86.3	4.5	5.3	1.4	1.0	0.1	0.8	0.6	86.3	4.5	9.2	0.065	0.502	23.673254	-100.658611
LA PAZ	8.00	1	1	1531	87.6	4.4	4.5	1.2	0.7	0.2	0.5	0.9	87.6	4.4	8.0	0.076	0.507	23.680068	-100.701231



SAN LUIS POTOSI

38 CARR: RAYON - ARROYO SECO

CLAVE: 24008

RUTA: SLP-011

AÑO: 2010

LUGAR	ESTACION				CLASIFICACION VEHICULAR EN PORCIENTO								COORDENADAS						
	KM	TE	SC	TDPA	A	B	C2	C3	T3S2	T3S3	T3S2R4	OTROS	A	B	C	K'	D	LATITUD	LONGITUD
RAYON	0.00	3	0	3698	93.2	2.8	0.4	0.7	2.3	0.1	0.2	0.3	93.2	2.8	4.0	0.075	0.500	21.843404	-99.624833
ARROYO SECO	52.00																		

39 CARR: SANTO DOMINGO - CERRO GORDO

CLAVE: 24614

RUTA: SLP-022

AÑO: 2010

LUGAR	ESTACION				CLASIFICACION VEHICULAR EN PORCIENTO								COORDENADAS						
	KM	TE	SC	TDPA	A	B	C2	C3	T3S2	T3S3	T3S2R4	OTROS	A	B	C	K'	D	LATITUD	LONGITUD
T. C. CD. VALLES - SAN LUIS POTOSI	0.00	3	0	2352	70.7	7.7	6.4	4.1	6.2	3.3	1.1	0.5	70.7	7.7	21.6	0.101	0.511	22.097391	-100.745823
T. C. QUERETARO - SAN LUIS POTOSI	19.00	1	0	1879	71.8	8.2	6.2	3.8	3.8	3.7	1.8	0.7	71.8	8.2	20.0	0.085	0.517	21.976472	-100.818433

40 CARR: TAMUIN - ESTACION F.F.C.C. TAMUIN

CLAVE: 24022

RUTA: SLP-040

AÑO: 2010

LUGAR	ESTACION				CLASIFICACION VEHICULAR EN PORCIENTO								COORDENADAS						
	KM	TE	SC	TDPA	A	B	C2	C3	T3S2	T3S3	T3S2R4	OTROS	A	B	C	K'	D	LATITUD	LONGITUD
TAMUIN	0.00	3	0	3876	80.4	5.3	5.7	1.4	3.6	1.8	1.2	0.6	80.4	5.3	14.3	0.078	0.508	22.022061	-98.787730
ESTACION F.F.C.C. TAMUIN	10.00	1	0	1223	81.3	5.2	5.6	1.3	3.0	1.5	1.3	0.8	81.3	5.2	13.5	0.066	0.508	22.066852	-98.808893

41 CARR: XOLOL - TAMUIN

CLAVE: 24027

RUTA: SLP-014

AÑO: 2010

LUGAR	ESTACION				CLASIFICACION VEHICULAR EN PORCIENTO								COORDENADAS						
	KM	TE	SC	TDPA	A	B	C2	C3	T3S2	T3S3	T3S2R4	OTROS	A	B	C	K'	D	LATITUD	LONGITUD
XOLOL																			
TAMUIN	97.00	1	0	4032	80.5	6.6	6.0	1.3	1.9	1.9	1.2	0.6	80.5	6.6	12.9	0.083	0.502	22.001349	-98.761674

42 CARR: CERRITOS - RIO VERDE (CUOTA)

CLAVE:

RUTA: SLP-D

AÑO: 2010

LUGAR	ESTACION				CLASIFICACION VEHICULAR EN PORCIENTO								COORDENADAS						
	KM	TE	SC	TDPA	A	B	C2	C3	T3S2	T3S3	T3S2R4	OTROS	A	B	C	K'	D	LATITUD	LONGITUD
CERRITOS	0.00	3	0	2969	72.2	5.7	7.9	4.3	4.6	3.2	1.5	0.6	72.2	5.7	22.1	0.060	0.504	22.588248	-100.586424
VILLA JUAREZ	58.00	3	0	3402	74.9	5.1	7.4	3.6	4.3	3.0	1.3	0.4	74.9	5.1	20.0	0.082	0.502	22.318184	-100.284856
RIO VERDE	103.00	1	0	3452	73.8	5.0	7.9	3.5	4.7	3.0	1.4	0.7	73.8	5.0	21.2	0.064	0.504	21.923895	-99.959278



SAN LUIS POTOSI

43 CARR: SAN LUIS POTOSI - VILLA DE ARRIAGA (CUOTA)

CLAVE: 24209

RUTA: SLP-D

AÑO: 2010

LUGAR	ESTACION				CLASIFICACION VEHICULAR								EN PORCIENTO				COORDENADAS		
	KM	TE	SC	TDPA	A	B	C2	C3	T3S2	T3S3	T3S2R4	OTROS	A	B	C	K'	D	LATITUD	LONGITUD
T. C. QUERETARO - SAN LUIS POTOSI	0.00	3	0	4108	26.7	3.7	3.4	5.3	29.8	7.8	22.0	1.3	26.7	3.7	69.6	0.096	0.509	22.011461	-100.845102
VILLA DE ARRIAGA	77.00	1	0	2747	28.4	4.0	3.3	5.1	28.5	8.2	21.2	1.3	28.4	4.0	67.6	0.074	0.511	21.895951	-101.396279

44 CARR: SAN LORENZO - MOCTEZUMA

CLAVE: 24016

RUTA: MEX-063-SLP-012

AÑO: 2010

LUGAR	ESTACION				CLASIFICACION VEHICULAR								EN PORCIENTO				COORDENADAS		
	KM	TE	SC	TDPA	A	B	C2	C3	T3S2	T3S3	T3S2R4	OTROS	A	B	C	K'	D	LATITUD	LONGITUD
T. C. SAN LUIS POTOSI - MATEHUALA	0.00	3	0	1083	78.3	3.0	8.8	3.4	3.6	1.3	1.2	0.4	78.3	3.0	18.7	0.094	0.508	22.568361	-100.639526
MOCTEZUMA	54.00	1	0	1892	78.7	4.8	6.3	2.9	3.7	2.0	1.2	0.4	78.7	4.8	16.5	0.090	0.505	22.758717	-101.064304





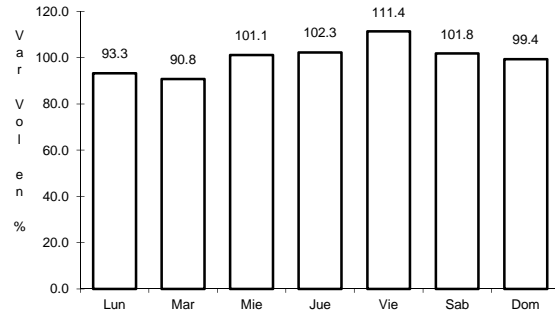




13 CARR: LIBRAMIENTO VILLA DE ARRIAGA

CLAVE:

ruta: MEX-080



Km: 0.00

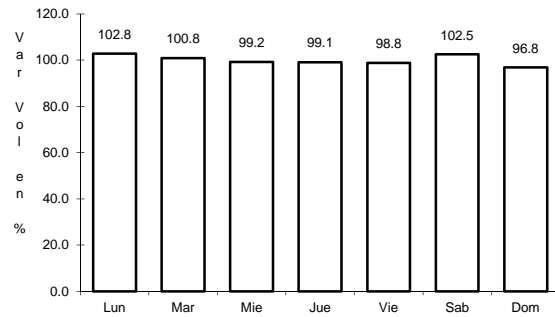
Tipo: 3

Sent: 0

14 CARR: MATEHUALA - ENT. PUERTO MEXICO

CLAVE: 00405

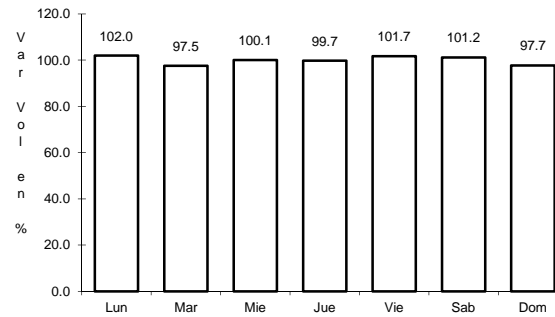
ruta: MEX-057



Km: 0.00

Tipo: 3

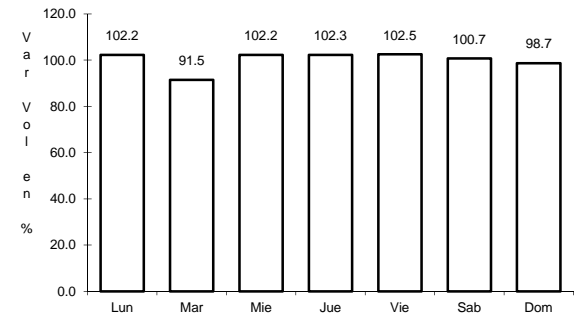
Sent: 0



Km: 177.18

Tipo: 1

Sent: 1



Km: 177.18

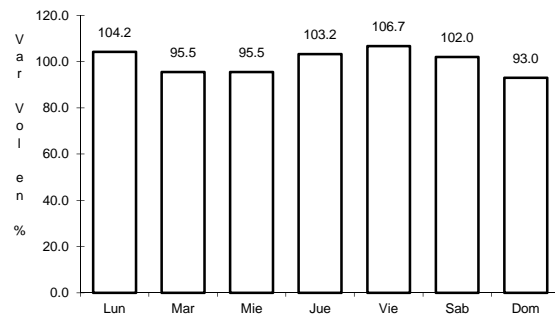
Tipo: 1

Sent: 2

15 CARR: PORTEZUELO - CD. VALLES

CLAVE: 00023

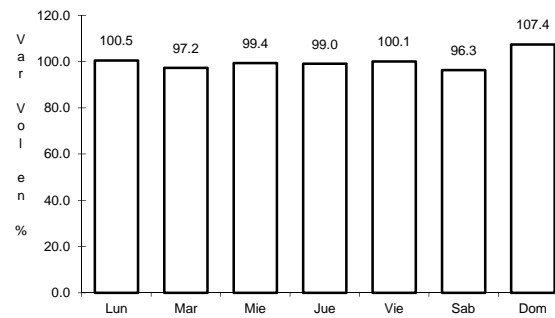
ruta: MEX-085



Km: 0.00

Tipo: 3

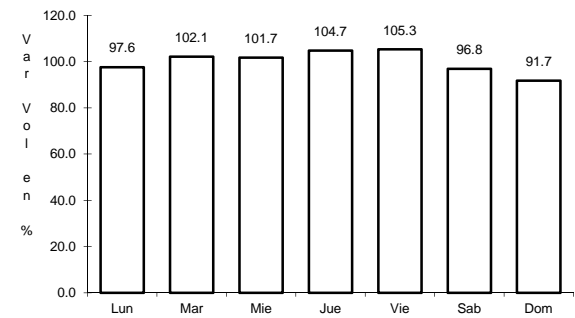
Sent: 0



Km: 154.00

Tipo: 3

Sent: 0



Km: 300.00

Tipo: 1

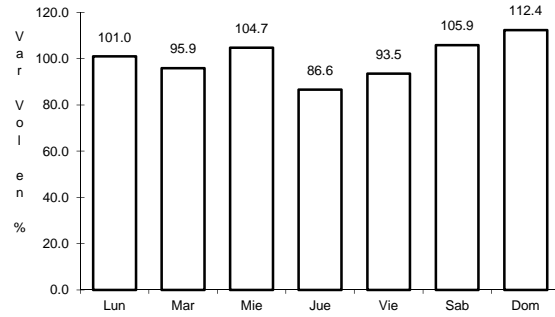
Sent: 0



19 CARR: RAMAL A OJO DE AGUA

CLAVE: 24023

RUTA: MEX-062



Km: 0.00

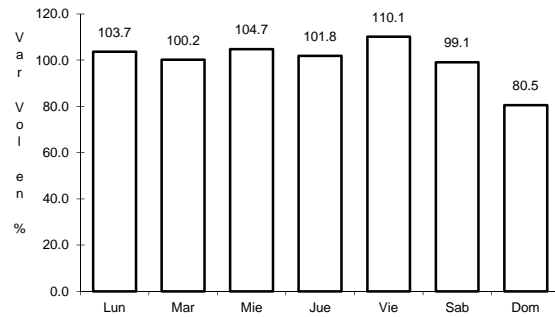
Tipo: 3

Sent: 0

20 CARR: RAMAL A RAYON

CLAVE:

RUTA: MEX-070



Km: 1.50

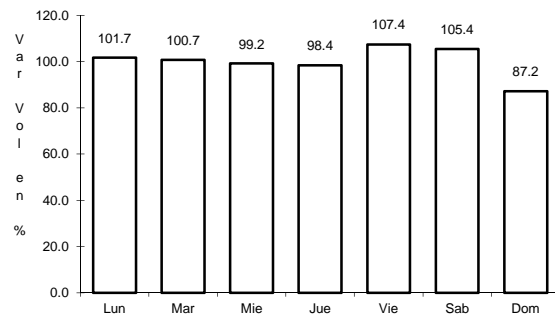
Tipo: 1

Sent: 0

21 CARR: SAN JUAN DEL RIO - XILITLA

CLAVE: 00183

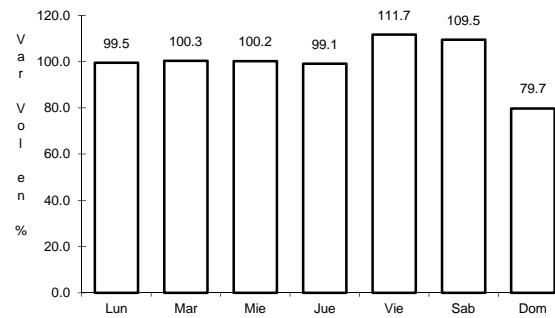
RUTA: MEX-120



Km: 5.20

Tipo: 3

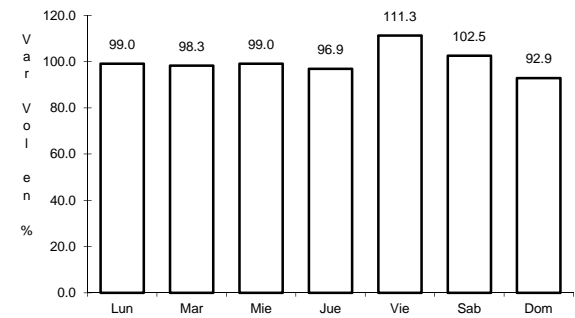
Sent: 1



Km: 5.20

Tipo: 3

Sent: 2



Km: 276.98

Tipo: 1

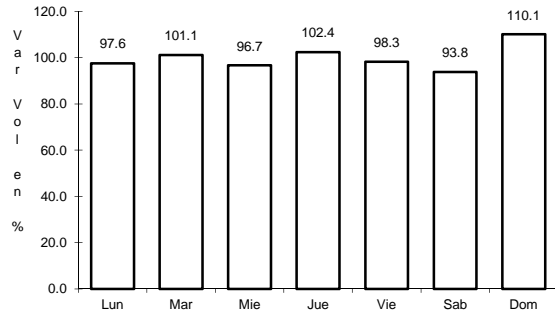
Sent: 0



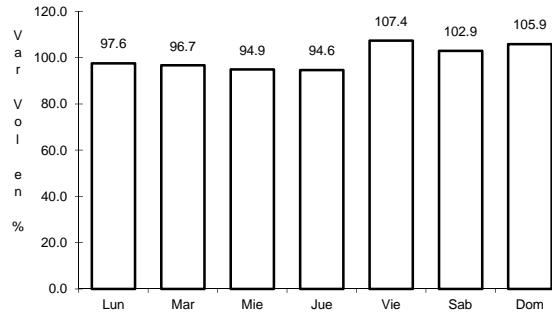
22 CARR: SAN LUIS POTOSI - ENT. ARCINAS

CLAVE: 00134

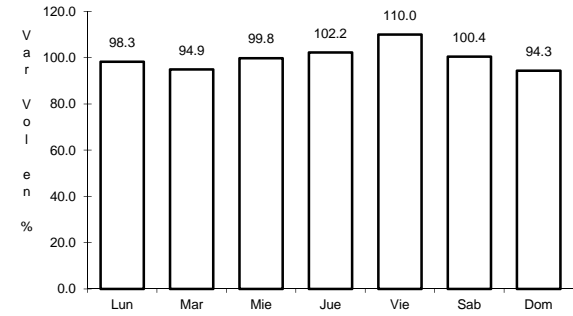
ruta: MEX-049



Km: 9.35      Tipo: 3      Sent: 0



Km: 99.00      Tipo: 1      Sent: 0

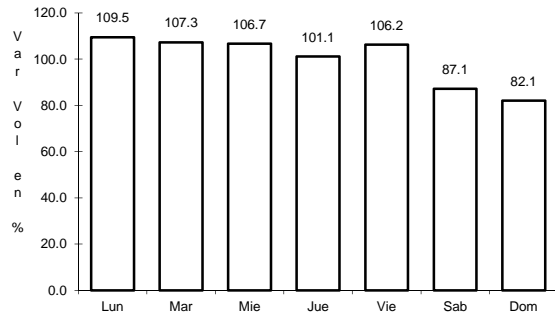


Km: 162.98      Tipo: 1      Sent: 0

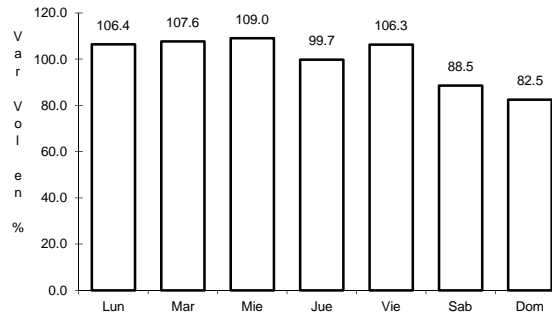
23 CARR: SAN LUIS POTOSI - LAGOS DE MORENO

CLAVE: 00133

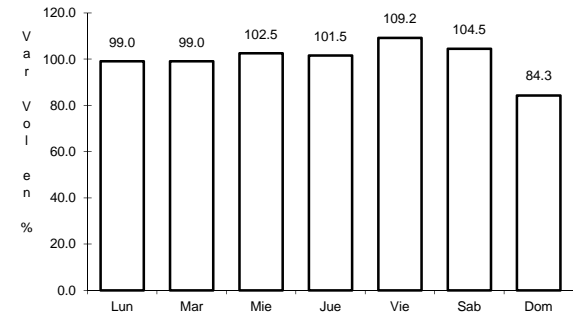
ruta: MEX-070-080



Km: 0.00      Tipo: 3      Sent: 1



Km: 0.00      Tipo: 3      Sent: 2

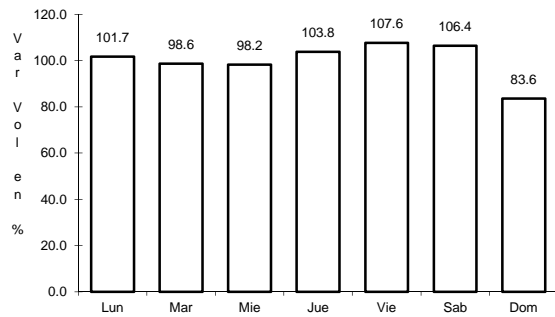


Km: 146.90      Tipo: 1      Sent: 0

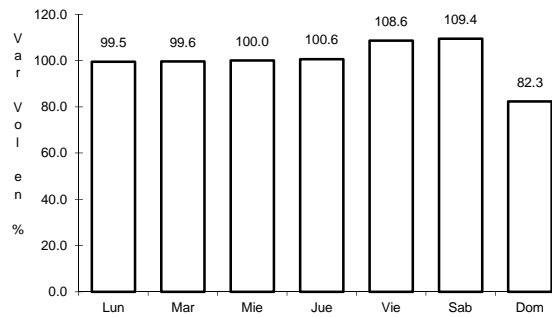
24 CARR: SAN LUIS POTOSI - MATEHUALA

CLAVE: 24508

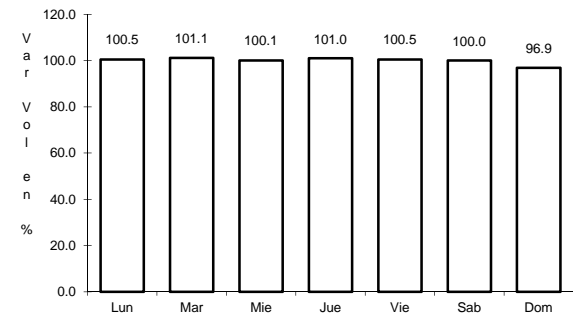
ruta: MEX-057



Km: 7.36      Tipo: 3      Sent: 1



Km: 7.36      Tipo: 3      Sent: 2

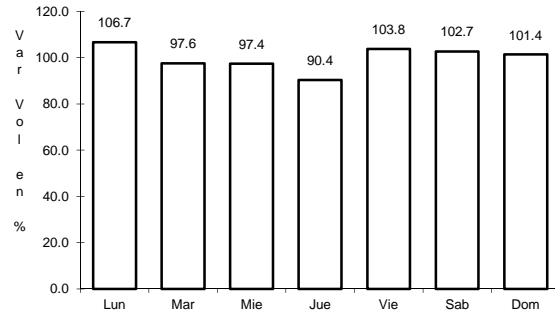


Km: 187.39      Tipo: 1      Sent: 1

25 CARR: T. C. (ENT. EL HUIZACHE- ANT. MORELOS)-EL SALTO

CLAVE: 24204

RUTA: MEX-080



Km: 0.00

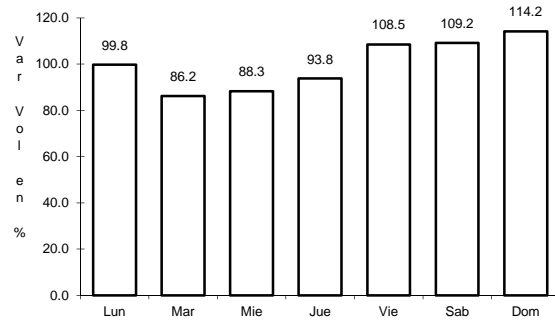
Tipo: 3

Sent: 0

26 CARR: T. C. (QRO - S.L.P.) - TIERRA NUEVA

CLAVE: 24203

RUTA: MEX-057



Km: 0.00

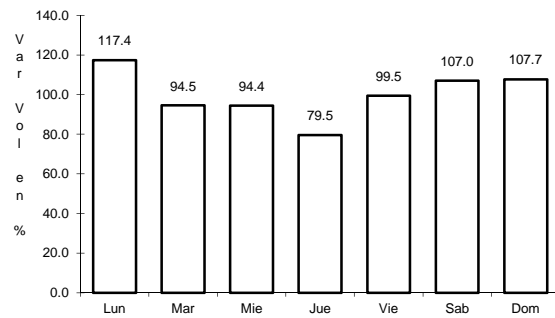
Tipo: 3

Sent: 0

27 CARR: T. C. (S.L.P. - MATEHUALA) - VILLA HIDALGO

CLAVE: 24619

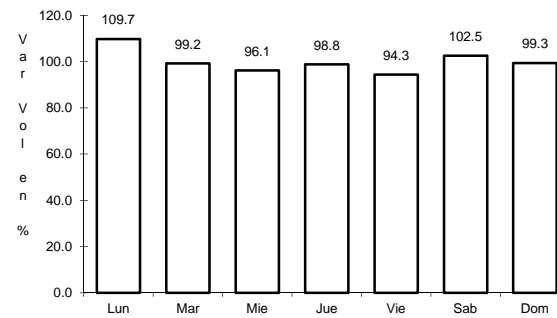
RUTA: MEX-057



Km: 0.00

Tipo: 3

Sent: 0



Km: 10.20

Tipo: 1

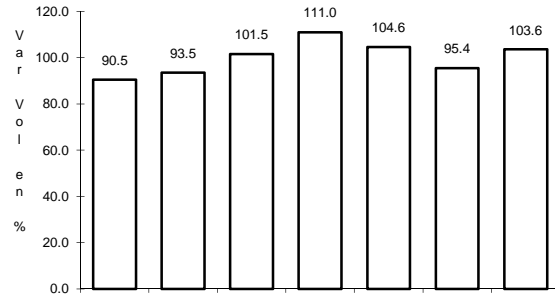
Sent: 0



31 CARR: CARDENAS - CD. DEL MAIZ

CLAVE:

RUTA: SLP-005



Km: 55.70

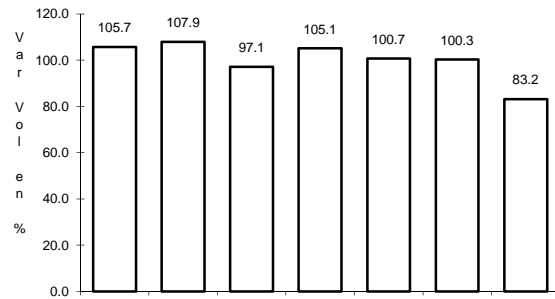
Tipo: 1

Sent: 0

32 CARR: CHARCAS - VILLA SANTO DOMINGO

CLAVE: 24624

RUTA: SLP-017



Km: 0.00

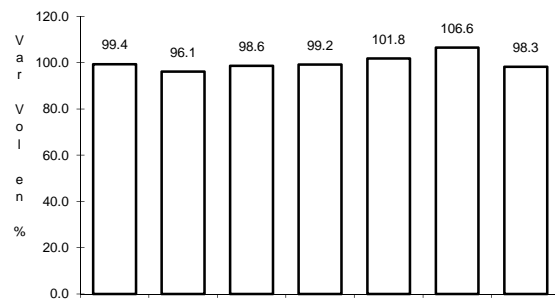
Tipo: 3

Sent: 0

33 CARR: MATEHUALA - LA PAZ

CLAVE: 24621

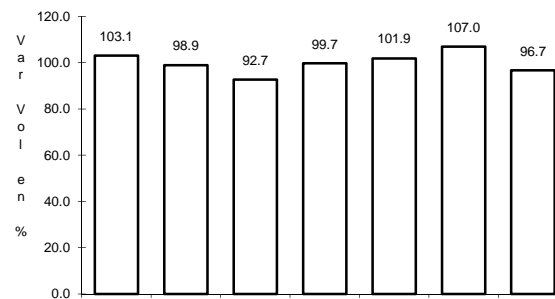
RUTA: SLP-020



Km: 0.00

Tipo: 3

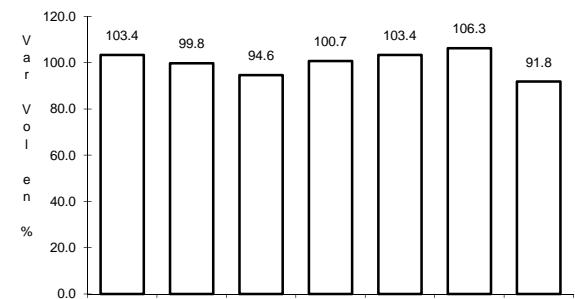
Sent: 0



Km: 8.00

Tipo: 1

Sent: 1



Km: 8.00

Tipo: 1

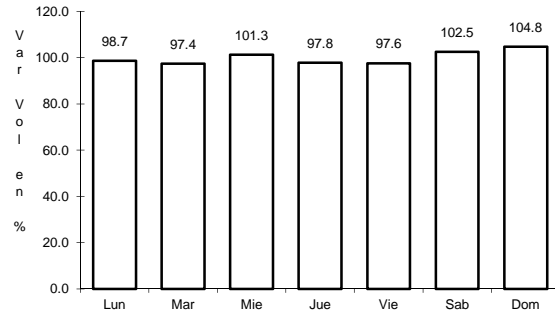
Sent: 2



37 CARR: RAMAL A POZO DE ACUÑA

CLAVE: 24626

ruta: SLP-009



Km: 0.00

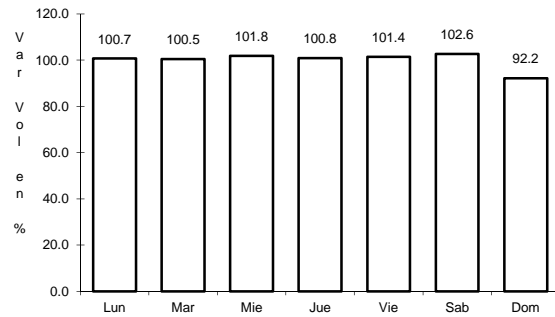
Tipo: 3

Sent: 0

38 CARR: RAYON - ARROYO SECO

CLAVE: 24008

ruta: SLP-011



Km: 0.00

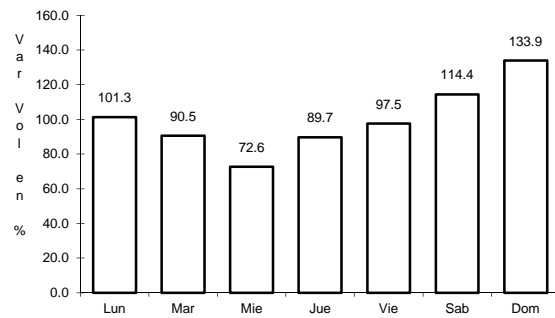
Tipo: 3

Sent: 0

39 CARR: SANTO DOMINGO - CERRO GORDO

CLAVE: 24614

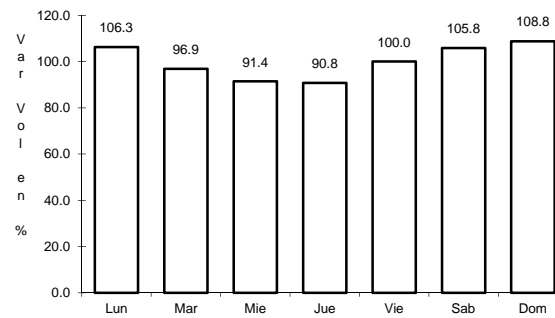
ruta: SLP-022



Km: 0.00

Tipo: 3

Sent: 0



Km: 19.00

Tipo: 1

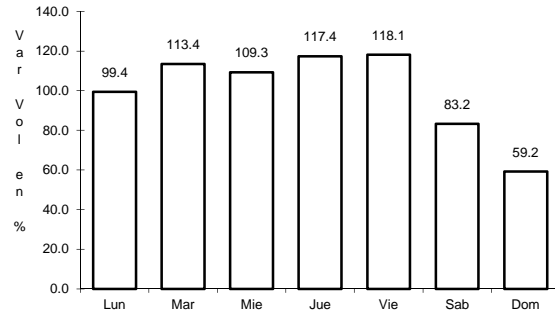
Sent: 0



43 CARR: SAN LUIS POTOSI - VILLA DE ARRIAGA (CUOTA)

CLAVE: 24209

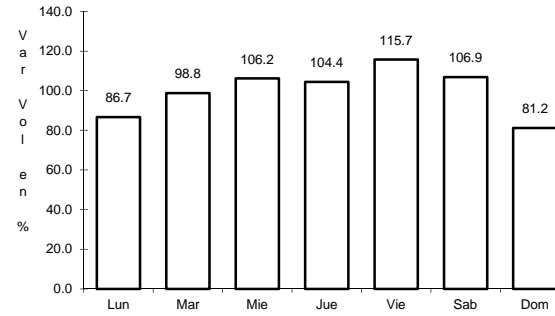
RUTA: SLP-D



Km: 0.00

Tipo: 3

Sent: 0



Km: 77.00

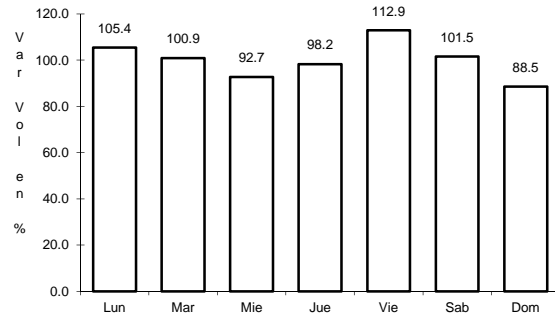
Tipo: 1

Sent: 0

44 CARR: SAN LORENZO - MOCTEZUMA

CLAVE: 24016

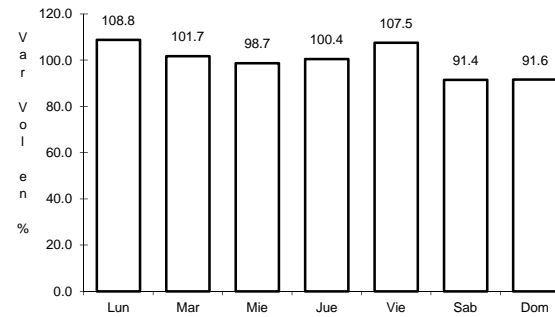
RUTA: MEX-063-SLP-012



Km: 0.00

Tipo: 3

Sent: 0



Km: 54.00

Tipo: 1

Sent: 0