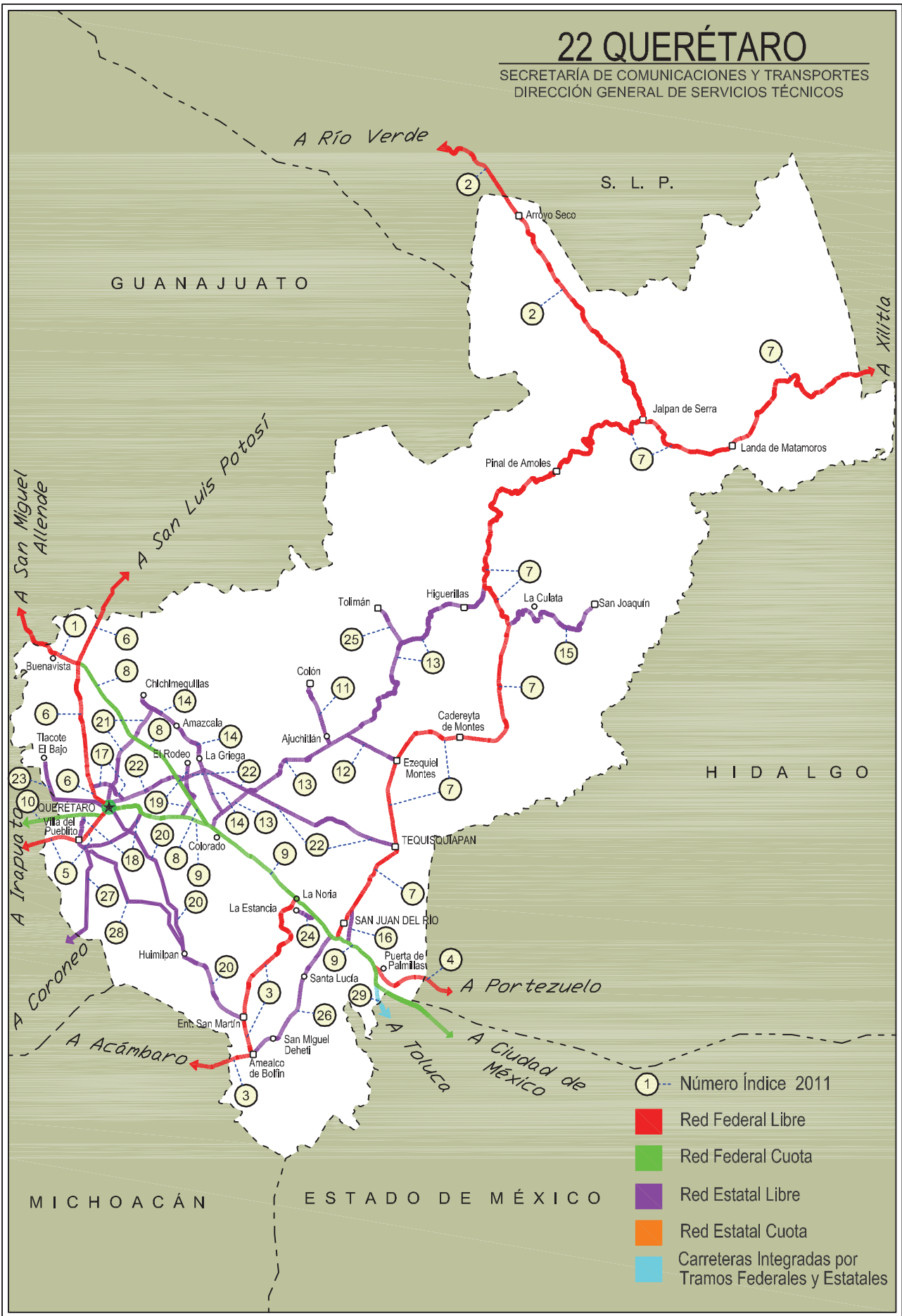


QUERETARO

No. INDICE	CARRETERA	RUTA
<b>---RED FEDERAL LIBRE---</b>		
1	ENT. BUENAVISTA - SAN MIGUEL DE ALLENDE	MEX
2	JALPAN DE SERRA - RIO VERDE	MEX-069
3	LA NORIA - ACAMBARO	MEX-120
4	PORTEZUELO - PALMILLAS	MEX-045
5	QUERETARO - IRAPUATO (LIBRE)	MEX-045
6	QUERETARO - SAN LUIS POTOSI	MEX-057
7	SAN JUAN DEL RIO - XILITLA	MEX-120
<b>---RED FEDERAL DE CUOTA---</b>		
8	LIBRAMIENTO NORESTE DE QUERETARO (CUOTA)	MEX-057D
9	MEXICO - QUERETARO (CUOTA)	MEX-057-MEX-057D
10	QUERETARO - IRAPUATO (CUOTA)	MEX-045D
<b>---RED ESTATAL LIBRE---</b>		
11	AJUCHITLAN - COLON	QRO-005
12	AJUCHITLAN - EZEQUIEL MONTES	QRO-005
13	EL COLORADO - HIGUERILLAS	QRO-004
14	HACIENDA PARAISO - CHICHIMEQUILLAS	QRO-001
15	LA CULATA - SAN JOAQUIN	QRO-021
16	LIBRAMIENTO DE SAN JUAN DEL RIO	QRO
17	LIBRAMIENTO NORTE DE QUERETARO	QRO
18	LIBRAMIENTO SURPONIENTE DE QUERETARO	QRO
19	PEÑA COLORADA - EL RODEO	QRO
20	QUERETARO - ENT. SAN MARTIN	QRO
21	QUERETARO - ESTACION CHICHIMEQUILLAS	QRO
22	QUERETARO - TEQUISQUIAPAN	QRO
23	QUERETARO - TLACOTE EL BAJO	QRO
24	RAMAL A LA ESTANCIA	QRO
25	RAMAL A TOLIMAN	QRO
26	SAN JUAN DEL RIO - AMEALCO	QRO
27	T. C. (VILLA DEL PUEBLITO - HUIMILPAN) - CORONEO	QRO-GTO
28	VILLA DEL PUEBLITO - HUIMILPAN	QRO
<b>---CARRETERAS INTEGRADAS POR TRAMOS FEDERALES Y ESTATALES---</b>		
29	TOLUCA - PALMILLAS	EM(D)-MEX-055

# 22 QUERÉTARO

SECRETARÍA DE COMUNICACIONES Y TRANSPORTES  
DIRECCIÓN GENERAL DE SERVICIOS TÉCNICOS



- ① -- Número Índice 2011
- Red Federal Libre
- Red Federal Cuota
- Red Estatal Libre
- Red Estatal Cuota
- Carreteras Integradas por Tramos Federales y Estatales

QUERETARO

1 CARR: ENT. BUENAVISTA - SAN MIGUEL DE ALLENDE

CLAVE: 00111

RUTA: MEX

AÑO: 2010

LUGAR	ESTACION				CLASIFICACION VEHICULAR EN PORCIENTO								COORDENADAS						
	KM	TE	SC	TDPA	A	B	C2	C3	T3S2	T3S3	T3S2R4	OTROS	A	B	C	K'	D	LATITUD	LONGITUD
T. C. QUERETARO - SAN LUIS POTOSI	0.00	3	0	9004	80.0	3.7	4.0	1.8	4.6	3.3	1.7	0.9	80.0	3.7	16.3	0.074	0.501	20.824707	-100.463389
LIM. EDOS. TERM. QRO. PPIA. GTO.	7.91																		
T. IZQ. GUADALUPE	12.00	1	0	4536	84.5	3.9	3.5	1.5	3.8	1.1	1.2	0.5	84.5	3.9	11.6	0.079	0.509	20.881207	-100.554269
SAN MIGUEL DE ALLENDE	35.11	1	0	6875	84.7	3.8	3.7	1.4	3.7	1.0	1.3	0.4	84.7	3.8	11.5	0.091	0.509	20.904768	-100.719143

2 CARR: JALPAN DE SERRA - RIO VERDE

CLAVE: 00265

RUTA: MEX-069

AÑO: 2010

LUGAR	ESTACION				CLASIFICACION VEHICULAR EN PORCIENTO								COORDENADAS						
	KM	TE	SC	TDPA	A	B	C2	C3	T3S2	T3S3	T3S2R4	OTROS	A	B	C	K'	D	LATITUD	LONGITUD
JALPAN DE SERRA	0.00	3	0	4493	87.6	3.0	4.2	0.3	2.8	0.5	1.2	0.4	87.6	3.0	9.4	0.075	0.503	21.233210	-99.479338
T. IZQ. CONCA	35.01	1	0	2000	88.9	3.0	4.0	1.2	1.3	0.3	0.9	0.4	88.9	3.0	8.1	0.065	0.508	21.448974	-99.630478
ARROYO SECO	48.60	1	0	1184	88.8	3.3	4.1	1.4	0.8	0.5	0.6	0.5	88.8	3.3	7.9	0.081	0.500	21.540579	-99.686867
LIM. EDOS. TERM. QRO. PPIA. S.L.P.	52.27																		
SAN CIRO DE ACOSTA	69.42	1	0	1250	86.7	3.4	3.7	1.9	1.9	1.1	0.6	0.7	86.7	3.4	9.9	0.105	0.505	21.649345	-99.810335
SAN CIRO DE ACOSTA	69.42	3	0	2971	86.5	3.3	4.2	2.1	1.4	1.1	0.9	0.5	86.5	3.3	10.2	0.064	0.500	21.664481	-99.829506
RIO VERDE	105.425	1	0	5809	85.1	3.3	3.7	2.4	2.4	1.6	0.9	0.6	85.1	3.3	11.6	0.068	0.502	21.884260	-99.976414

3 CARR: LA NORIA - ACAMBARO

CLAVE: 00131

RUTA: MEX-120

AÑO: 2010

LUGAR	ESTACION				CLASIFICACION VEHICULAR EN PORCIENTO								COORDENADAS						
	KM	TE	SC	TDPA	A	B	C2	C3	T3S2	T3S3	T3S2R4	OTROS	A	B	C	K'	D	LATITUD	LONGITUD
LA NORIA	0.00	3	0	4876	83.6	3.7	4.6	2.5	2.6	1.1	1.1	0.8	83.6	3.7	12.7	0.079	0.504	20.439668	-100.073531
AMEALCO	34.66	1	0	3244	79.4	6.8	4.5	2.3	3.5	2.1	0.8	0.6	79.4	6.8	13.8	0.096	0.509	20.203705	-100.150800
AMEALCO	34.66	3	0	3205	81.6	7.1	4.3	2.0	2.6	1.8	0.4	0.2	81.6	7.1	11.3	0.124	0.501	20.186698	-100.157486
LIM. EDOS. TERM. QRO. PPIA. MICH.	39.15																		
LIM. EDOS. TERM. MICH. PPIA. GTO.	55.90																		
CORONEO	59.35	3	0	1729	81.7	5.3	5.2	2.7	2.3	1.7	0.5	0.6	81.7	5.3	13.0	0.072	0.500	20.195419	-100.379029
JERECUARO	79.70	3	0	4356	82.3	5.4	5.1	2.3	2.3	1.6	0.5	0.5	82.3	5.4	12.3	0.066	0.506	20.146392	-100.516985
ACAMBARO	111.12	1	0	6477	82.7	5.2	4.5	2.6	2.6	1.8	0.2	0.4	82.7	5.2	12.1	0.063	0.501	20.046496	-100.706817

4 CARR: PORTEZUELO - PALMILLAS

CLAVE: 00194

RUTA: MEX-045

AÑO: 2010

LUGAR	ESTACION				CLASIFICACION VEHICULAR EN PORCIENTO								COORDENADAS						
	KM	TE	SC	TDPA	A	B	C2	C3	T3S2	T3S3	T3S2R4	OTROS	A	B	C	K'	D	LATITUD	LONGITUD
PORTEZUELO	0.00	3	0	8036	78.4	12.0	0.4	0.6	3.8	1.8	2.6	0.4	78.4	12.0	9.6	0.062	0.501	20.486225	-99.310650

QUERETARO

4 CARR: PORTEZUELO - PALMILLAS

CLAVE: 00194

RUTA: MEX-045

AÑO: 2010

LUGAR	ESTACION				CLASIFICACION VEHICULAR EN PORCIENTO								COORDENADAS						
	KM	TE	SC	TDPA	A	B	C2	C3	T3S2	T3S3	T3S2R4	OTROS	A	B	C	K'	D	LATITUD	LONGITUD
JONACAPA	29.41	3	0	7891	79.4	10.9	0.2	0.5	3.7	1.9	2.5	0.9	79.4	10.9	9.7	0.072	0.501	20.434347	-99.538329
HUICHAPAN	45.10	1	0	7800	79.2	9.3	2.5	0.5	3.9	1.7	2.1	0.8	79.2	9.3	11.5	0.067	0.501	20.391394	-99.639742
T. IZQ. NOPALA	56.15	1	0	6988	77.2	8.9	3.1	1.8	4.1	1.7	2.5	0.7	77.2	8.9	13.9	0.068	0.501	20.318611	-99.712648
LIM. EDOS. TERM. HGO. PPIA. QRO.	71.40																		
PALMILLAS	80.00	1	0	8186	79.3	7.4	3.3	1.4	3.9	2.1	2.1	0.5	79.3	7.4	13.3	0.071	0.508	20.326921	-99.932542

5 CARR: QUERETARO - IRAPUATO (LIBRE)

CLAVE: 00154

RUTA: MEX-045

AÑO: 2010

LUGAR	ESTACION				CLASIFICACION VEHICULAR EN PORCIENTO								COORDENADAS						
	KM	TE	SC	TDPA	A	B	C2	C3	T3S2	T3S3	T3S2R4	OTROS	A	B	C	K'	D	LATITUD	LONGITUD
QUERETARO PONIENTE	0.00	3	1	18082	60.1	1.6	13.7	7.9	12.2	2.9	1.0	0.6	60.1	1.6	38.3	0.063	0.511	20.557463	-100.418170
QUERETARO PONIENTE	0.00	3	2	17315	58.5	1.5	14.4	8.1	12.7	3.2	1.0	0.6	58.5	1.5	40.0	0.057	0.511	20.557463	-100.418170
T. DER. VILLA DEL PUEBLITO	6.67	3	1	11421	58.2	1.5	14.1	8.2	13.3	3.1	1.0	0.6	58.2	1.5	40.3	0.083	0.520	20.533666	-100.449778
T. DER. VILLA DEL PUEBLITO	6.67	3	2	12366	60.1	1.4	13.9	7.3	12.9	2.8	1.0	0.6	60.1	1.4	38.5	0.082	0.520	20.533666	-100.449778
LOS ANGELES	12.60	3	0	25473	59.8	1.5	13.9	7.9	12.3	3.0	1.0	0.6	59.8	1.5	38.7	0.076	0.504	20.536738	-100.489456
LIM. EDOS. TERM. QRO. PPIA. GTO.	13.49																		
T. IZQ. APASEO EL ALTO	28.37	3	0	21919	60.1	1.6	13.7	7.8	12.3	2.9	1.0	0.6	60.1	1.6	38.3	0.080	0.501	20.466996	-100.635834
T. DER. APASEO EL GRANDE	40.11	3	0	18992	57.7	1.6	14.4	8.2	13.3	3.1	1.1	0.6	57.7	1.6	40.7	0.078	0.501	20.535941	-100.703481
T. IZQ. LIBRAMIENTO DE CELAYA OTE.	49.90	1	0	23176	67.0	3.7	7.1	7.6	9.1	2.6	2.6	0.3	67.0	3.7	29.3	0.060	0.506	20.519488	-100.755995
T. IZQ. LIBRAMIENTO DE CELAYA PTE.	55.61	3	0	35030	65.8	3.6	7.4	7.8	10.2	2.5	2.4	0.3	65.8	3.6	30.6	0.074	0.501	20.516420	-100.881082
T. IZQ. CORTAZAR	67.50	3	1	12704	64.8	3.7	8.1	7.9	10.0	2.7	2.5	0.3	64.8	3.7	31.5	0.092	0.501	20.511989	-100.967281
T. IZQ. CORTAZAR	67.50	3	2	12628	66.8	3.4	7.5	7.6	9.3	2.7	2.4	0.3	66.8	3.4	29.8	0.093	0.501	20.510388	-100.965756
T. IZQ. LIBRAMIENTO DE SALAMANCA	93.80	1	1	11070	65.4	3.5	7.7	8.4	9.5	2.6	2.6	0.3	65.4	3.5	31.1	0.070	0.502	20.554676	-101.155433
T. IZQ. LIBRAMIENTO DE SALAMANCA	93.80	1	2	11173	65.2	3.6	7.5	7.9	10.1	2.8	2.6	0.3	65.2	3.6	31.2	0.075	0.502	20.554676	-101.155433
IRAPUATO	113.70	1	1	12942	64.6	3.8	7.6	8.2	10.1	2.7	2.7	0.3	64.6	3.8	31.6	0.066	0.505	20.657603	-101.302494
IRAPUATO	113.70	1	2	12674	67.0	3.5	7.6	7.4	9.3	2.5	2.4	0.3	67.0	3.5	29.5	0.071	0.505	20.657603	-101.302494

6 CARR: QUERETARO - SAN LUIS POTOSI

CLAVE: 00165

RUTA: MEX-057

AÑO: 2010

LUGAR	ESTACION				CLASIFICACION VEHICULAR EN PORCIENTO								COORDENADAS						
	KM	TE	SC	TDPA	A	B	C2	C3	T3S2	T3S3	T3S2R4	OTROS	A	B	C	K'	D	LATITUD	LONGITUD
QUERETARO	0.00																		
T. DER. LIBRAMIENTO DE QUERETARO	6.28	3	1	19248	47.0	4.4	7.3	6.9	18.5	7.2	7.8	0.9	47.0	4.4	48.6	0.093	0.509	20.634364	-100.427576
T. DER. LIBRAMIENTO DE QUERETARO	6.28	3	2	19982	47.4	4.3	7.4	6.1	21.3	5.4	7.4	0.7	47.4	4.3	48.3	0.097	0.509	20.634364	-100.427576
T. IZQ. JURIUQUILLA	15.63	3	1	19334	47.0	4.9	7.2	7.6	19.3	5.9	7.3	0.8	47.0	4.9	48.1	0.076	0.529	20.704588	-100.437246

QUERETARO

6 CARR: QUERETARO - SAN LUIS POTOSI

CLAVE: 00165

RUTA: MEX-057

AÑO: 2010

LUGAR	ESTACION				CLASIFICACION VEHICULAR EN PORCIENTO								COORDENADAS						
	KM	TE	SC	TDPA	A	B	C2	C3	T3S2	T3S3	T3S2R4	OTROS	A	B	C	K'	D	LATITUD	LONGITUD
T. IZO. JURIQUILLA	15.63	3	2	20645	45.7	5.3	6.9	7.9	20.0	6.2	7.2	0.8	45.7	5.3	49.0	0.082	0.529	20.704588	-100.437246
T. IZO. SAN MIGUEL DE ALLENDE	28.53	1	1	13950	40.4	5.6	8.5	6.9	21.9	6.9	9.1	0.7	40.4	5.6	54.0	0.073	0.512	20.809552	-100.449072
T. IZO. SAN MIGUEL DE ALLENDE	28.53	1	2	14615	41.9	5.2	8.6	6.4	22.6	6.3	8.1	0.9	41.9	5.2	52.9	0.076	0.512	20.809365	-100.449121
T. IZO. SAN MIGUEL DE ALLENDE	28.53	3	1	12428	45.7	5.1	8.0	6.7	20.8	5.9	7.1	0.7	45.7	5.1	49.2	0.097	0.500	20.821769	-100.447075
T. IZO. SAN MIGUEL DE ALLENDE	28.53	3	2	12403	45.0	5.0	8.2	6.3	21.3	6.2	7.3	0.7	45.0	5.0	50.0	0.094	0.500	20.822272	-100.446708
LIM. EDOS. TERM. QRO. PPIA. GTO.	36.70																		
X. C. SAN JOSE ITURBIDE - EL ARENAL	46.83	1	1	11735	53.2	4.5	6.2	4.3	17.4	6.1	7.5	0.8	53.2	4.5	42.3	0.084	0.500	20.961607	-100.426409
X. C. SAN JOSE ITURBIDE - EL ARENAL	46.83	1	2	11746	55.6	4.8	5.9	4.1	15.4	5.7	7.6	0.9	55.6	4.8	39.6	0.082	0.500	20.961620	-100.426497
X. C. ENT. SAN MIGUEL DE ALLENDE - DR. MORA	61.93	1	1	10581	54.3	4.9	6.3	5.6	16.6	5.3	6.4	0.6	54.3	4.9	40.8	0.077	0.500	21.076534	-100.511900
X. C. ENT. SAN MIGUEL DE ALLENDE - DR. MORA	61.93	1	2	10571	52.2	4.4	5.8	4.7	18.3	5.9	7.9	0.8	52.2	4.4	43.4	0.083	0.500	21.076642	-100.512102
X. C. SAN LUIS DE LA PAZ - GUANAJUATO	86.68	1	1	9735	51.8	4.6	6.4	4.6	18.0	6.3	7.7	0.6	51.8	4.6	43.6	0.076	0.500	21.281978	-100.591958
X. C. SAN LUIS DE LA PAZ - GUANAJUATO	86.68	1	2	9719	51.4	4.7	6.6	4.6	18.7	6.2	7.2	0.6	51.4	4.7	43.9	0.077	0.500	21.281947	-100.591775
T. IZO. SAN DIEGO DE LA UNION	119.07	3	1	8184	50.3	4.9	6.8	5.4	18.6	5.7	7.5	0.8	50.3	4.9	44.8	0.089	0.507	21.540608	-100.746964
T. IZO. SAN DIEGO DE LA UNION	119.07	3	2	7958	50.7	4.5	6.7	5.1	18.5	5.9	7.9	0.7	50.7	4.5	44.8	0.083	0.507	21.540589	-100.747089
LIM. EDOS. TERM. GTO. PPIA. S.L.P.	124.74																		
T. IZO. SANTA MARIA DEL RIO	155.88	3	1	8143	53.2	5.4	5.7	5.5	19.6	5.0	5.0	0.6	53.2	5.4	41.4	0.084	0.502	21.840291	-100.736030
T. IZO. SANTA MARIA DEL RIO	155.88	3	2	8214	52.0	4.1	5.8	5.3	22.2	4.9	4.9	0.8	52.0	4.1	43.9	0.089	0.502	21.840269	-100.736160
T. IZO. VILLA DE REYES	176.35	1	1	11402	55.7	3.9	5.1	3.9	17.5	6.5	6.7	0.7	55.7	3.9	40.4	0.089	0.505	21.966743	-100.814534
T. IZO. VILLA DE REYES	176.35	1	2	11176	54.5	4.5	5.9	4.7	20.6	4.8	4.2	0.8	54.5	4.5	41.0	0.089	0.505	21.966698	-100.814702
T. IZO. VILLA DE REYES	176.35	3	1	11569	56.3	4.5	6.0	5.4	15.2	6.2	5.8	0.6	56.3	4.5	39.2	0.092	0.508	21.969874	-100.816326
T. IZO. VILLA DE REYES	176.35	3	2	11198	58.1	4.2	6.2	4.2	16.9	4.8	5.0	0.6	58.1	4.2	37.7	0.091	0.508	21.969784	-100.816399
X. C. LIBRAMIENTO DE SAN LUIS POTOSI	184.80	1	1	12233	56.5	4.9	5.8	4.1	16.4	5.8	5.7	0.8	56.5	4.9	38.6	0.101	0.508	22.031910	-100.850256
X. C. LIBRAMIENTO DE SAN LUIS POTOSI	184.80	1	2	11848	55.9	4.4	5.9	4.9	19.0	4.7	4.2	1.0	55.9	4.4	39.7	0.100	0.508	22.031839	-100.850128
X. PERIFERICO SAN LUIS POTOSI	197.50	1	1	19664	70.1	4.5	3.7	4.3	7.9	4.3	4.3	0.9	70.1	4.5	25.4	0.091	0.500	22.121947	-100.913374
X. PERIFERICO SAN LUIS POTOSI	197.50	1	2	19629	70.9	4.4	2.9	4.2	7.7	4.5	4.2	1.2	70.9	4.4	24.7	0.099	0.500	22.122112	-100.913319
SAN LUIS POTOSI	201.655																		

7 CARR: SAN JUAN DEL RIO - XILITLA

CLAVE: 00183

RUTA: MEX-120

AÑO: 2010

LUGAR	ESTACION				CLASIFICACION VEHICULAR EN PORCIENTO								COORDENADAS						
	KM	TE	SC	TDPA	A	B	C2	C3	T3S2	T3S3	T3S2R4	OTROS	A	B	C	K'	D	LATITUD	LONGITUD
SAN JUAN DEL RIO	0.00																		
T. DER. LIBRAMIENTO DE SAN JUAN DEL RIO	5.20	3	1	7848	80.6	2.1	4.1	2.0	5.5	2.2	2.8	0.7	80.6	2.1	17.3	0.075	0.506	20.436131	-99.968325
T. DER. LIBRAMIENTO DE SAN JUAN DEL RIO	5.20	3	2	7671	79.6	2.3	4.6	2.2	5.8	2.1	2.7	0.7	79.6	2.3	18.1	0.077	0.506	20.436131	-99.968325
T. DER. TEQUISQUIAPAN	19.80	1	1	5854	80.5	4.0	7.6	1.7	4.2	0.8	0.2	1.0	80.5	4.0	15.5	0.086	0.501	20.516450	-99.901146

QUERETARO

7 CARR: SAN JUAN DEL RIO - XILITLA

CLAVE: 00183

RUTA: MEX-120

AÑO: 2010

LUGAR	ESTACION				CLASIFICACION VEHICULAR EN PORCIENTO								COORDENADAS						
	KM	TE	SC	TDPA	A	B	C2	C3	T3S2	T3S3	T3S2R4	OTROS	A	B	C	K'	D	LATITUD	LONGITUD
T. DER. TEQUISQUIAPAN	19.80	1	2	5836	79.3	6.1	7.6	1.3	3.6	0.8	0.3	1.0	79.3	6.1	14.6	0.095	0.501	20.516450	-99.901146
T. DER. TEQUISQUIAPAN	19.80	3	0	11771	85.0	2.6	5.4	1.4	2.4	0.9	0.6	1.7	85.0	2.6	12.4	0.074	0.506	20.543537	-99.902142
EZEQUIEL MONTES	36.50	1	0	9792	78.5	2.5	4.7	2.5	5.9	2.7	2.5	0.7	78.5	2.5	19.0	0.072	0.501	20.646938	-99.904907
EZEQUIEL MONTES	36.50	3	0	8670	79.4	2.2	4.4	2.0	5.6	2.9	2.6	0.9	79.4	2.2	18.4	0.070	0.502	20.677131	-99.891078
CADEREYTA	47.90	3	0	8380	80.7	2.2	4.5	2.1	5.3	2.2	2.4	0.6	80.7	2.2	17.1	0.073	0.510	20.701624	-99.807901
VIZARRON DE MONTES	73.50	3	0	2868	81.1	2.1	4.4	2.1	5.2	2.1	2.4	0.6	81.1	2.1	16.8	0.078	0.505	20.842699	-99.715484
T. DER. SAN JOAQUIN	79.50	3	0	1107	80.4	2.3	4.4	2.2	5.2	2.3	2.6	0.6	80.4	2.3	17.3	0.089	0.548	20.884347	-99.706795
T. IZQ. HIGUERILLAS	89.10	3	0	1368	79.7	2.2	4.8	2.1	5.7	2.3	2.6	0.6	79.7	2.2	18.1	0.089	0.520	20.950576	-99.749107
T. IZQ. PEÑAMILLER	103.00	3	0	1084	83.4	2.3	4.0	1.3	5.2	1.7	1.3	0.8	83.4	2.3	14.3	0.086	0.507	21.038987	-99.739579
PINAL DE AMOLES	140.00	3	0	1368	83.2	2.9	3.8	1.5	4.7	1.8	1.2	0.9	83.2	2.9	13.9	0.083	0.511	21.136901	-99.621002
JALPAN DE SERRA	179.30	3	0	4732	83.9	2.7	4.6	2.3	3.4	1.4	1.2	0.5	83.9	2.7	13.4	0.076	0.518	21.213445	-99.458647
LANDA DE MATAMOROS	201.60	3	0	2233	82.6	2.9	5.1	2.7	3.7	1.4	1.1	0.5	82.6	2.9	14.5	0.086	0.503	21.187102	-99.311159
EL LOBO	236.40	3	0	1035	84.0	2.6	5.3	2.3	3.0	1.3	1.0	0.5	84.0	2.6	13.4	0.099	0.505	21.292351	-99.116501
LIM. EDOS. TERM. QRO. PPIA. S.L.P.	238.33																		
XILITLA	266.40	1	0	1404	77.7	8.1	6.6	2.8	1.0	1.7	1.6	0.5	77.7	8.1	14.2	0.096	0.503	21.378749	-98.998712
T. C. PORTEZUELO - CD. VALLES	276.979	1	0	1798	76.5	7.0	10.0	1.9	1.6	0.7	1.4	0.9	76.5	7.0	16.5	0.095	0.505	21.443522	-98.929346

8 CARR: LIBRAMIENTO NORESTE DE QUERETARO (CUOTA)

CLAVE:

RUTA: MEX-057D

AÑO: 2010

LUGAR	ESTACION				CLASIFICACION VEHICULAR EN PORCIENTO								COORDENADAS						
	KM	TE	SC	TDPA	A	B	C2	C3	T3S2	T3S3	T3S2R4	OTROS	A	B	C	K'	D	LATITUD	LONGITUD
T.C. MEXICO - QUERETARO	0.00	3	1	6409	42.7	4.1	6.1	5.5	29.5	4.5	6.8	0.8	42.7	4.1	53.2	0.068	0.503	20.568665	-100.233243
T.C. MEXICO - QUERETARO	0.00	3	2	6320	40.6	3.8	6.2	6.1	31.8	4.3	6.4	0.8	40.6	3.8	55.6	0.071	0.503	20.568665	-100.233243
CASETA DE COBRO CHICHIMEQUILLAS	20.32	2	0	11953	41.3	4.0	5.9	5.8	31.3	4.4	6.5	0.8	41.3	4.0	54.7			20.705575	-100.343908
T.C. QUERETARO - SAN LUIS POTOSI	37.50	1	1	7897	40.5	4.0	6.1	5.8	31.7	4.7	6.4	0.8	40.5	4.0	55.5	0.069	0.500	20.815865	-100.446475
T.C. QUERETARO - SAN LUIS POTOSI	37.50	1	2	7909	41.7	3.9	5.9	5.6	31.1	4.4	6.6	0.8	41.7	3.9	54.4	0.070	0.500	20.815939	-100.446440

9 CARR: MEXICO - QUERETARO (CUOTA)

CLAVE: 00411

RUTA: MEX-057-MEX-057D

AÑO: 2010

LUGAR	ESTACION				CLASIFICACION VEHICULAR EN PORCIENTO								COORDENADAS						
	KM	TE	SC	TDPA	A	B	C2	C3	T3S2	T3S3	T3S2R4	OTROS	A	B	C	K'	D	LATITUD	LONGITUD
MEXICO	0.00																		
LIM. EDOS. TERM. D.F. PPIA. MEX.	11.30																		
CASETA DE COBRO TEPOTZOTLAN	43.01	2	0	44648	67.6	5.6	6.8	4.8	11.2	1.1	2.5	0.4	67.6	5.6	26.8			19.715358	-99.207587
ENT. JOROBAS	56.18	1	1	30395	67.5	5.5	7.0	5.0	11.0	1.1	2.5	0.4	67.5	5.5	27.0	0.070	0.506	19.822613	-99.246170

QUERETARO

9 CARR: MEXICO - QUERETARO (CUOTA)

CLAVE: 00411

RUTA: MEX-057-MEX-057D

AÑO: 2010

LUGAR	ESTACION				CLASIFICACION VEHICULAR EN PORCIENTO								COORDENADAS						
	KM	TE	SC	TDPA	A	B	C2	C3	T3S2	T3S3	T3S2R4	OTROS	A	B	C	K'	D	LATITUD	LONGITUD
ENT. JOROBAS	56.18	1	2	29636	66.4	5.6	7.1	5.1	11.7	1.1	2.6	0.4	66.4	5.6	28.0	0.071	0.506	19.822618	-99.246166
ENT. JOROBAS	56.18	3	1	27017	67.1	5.7	6.6	4.9	11.6	1.1	2.6	0.4	67.1	5.7	27.2	0.073	0.502	19.829119	-99.257183
ENT. JOROBAS	56.18	3	2	26818	68.0	5.2	6.6	4.8	11.4	1.1	2.5	0.4	68.0	5.2	26.8	0.073	0.502	19.829132	-99.257174
LIM. EDOS. TERM. MEX. PPIA. HGO.	59.85																		
T. DER. TEPEJI DEL RIO	69.36	1	1	23011	57.1	4.7	7.0	7.4	16.9	1.9	4.4	0.6	57.1	4.7	38.2	0.089	0.509	19.878429	-99.339888
T. DER. TEPEJI DEL RIO	69.36	1	2	23839	58.5	4.4	6.9	7.1	16.7	1.7	4.1	0.6	58.5	4.4	37.1	0.085	0.509	19.876556	-99.341227
T. DER. TEPEJI DEL RIO	69.36	3	1	20857	58.8	4.5	6.9	6.8	16.4	1.7	4.3	0.6	58.8	4.5	36.7	0.071	0.501	19.897399	-99.349002
T. DER. TEPEJI DEL RIO	69.36	3	2	20914	57.7	4.5	6.8	7.0	17.2	1.7	4.5	0.6	57.7	4.5	37.8	0.078	0.501	19.897525	-99.349069
T. IZQ. JILOTEPEC	83.75	1	1	15216	57.7	4.5	7.1	7.0	16.7	1.9	4.5	0.6	57.7	4.5	37.8	0.086	0.503	19.969823	-99.429886
T. IZQ. JILOTEPEC	83.75	1	2	15017	57.2	4.4	7.2	7.1	17.1	1.9	4.5	0.6	57.2	4.4	38.4	0.077	0.503	19.969491	-99.430084
T. IZQ. JILOTEPEC	83.75	3	1	15348	58.7	4.3	7.0	7.2	15.9	1.8	4.5	0.6	58.7	4.3	37.0	0.067	0.500	19.985802	-99.444881
T. IZQ. JILOTEPEC	83.75	3	2	15377	57.8	4.6	7.1	7.5	16.2	1.9	4.3	0.6	57.8	4.6	37.6	0.070	0.500	19.985899	-99.444757
LIM. EDOS. TERM. HGO. PPIA. MEX.	86.00																		
X. C. JILOTEPEC - MARAVILLAS	107.00	1	1	17368	58.2	4.5	6.7	6.8	16.9	1.8	4.5	0.6	58.2	4.5	37.3	0.069	0.502	20.082716	-99.625099
X. C. JILOTEPEC - MARAVILLAS	107.00	1	2	17541	56.9	4.6	7.1	6.9	17.3	1.8	4.8	0.6	56.9	4.6	38.5	0.071	0.502	20.082759	-99.626396
X. C. JILOTEPEC - MARAVILLAS	107.00	3	1	15552	56.9	4.7	6.8	7.1	17.6	1.9	4.4	0.6	56.9	4.7	38.4	0.074	0.531	20.082771	-99.634031
X. C. JILOTEPEC - MARAVILLAS	107.00	3	2	17593	58.3	4.3	6.6	7.4	16.8	1.7	4.3	0.6	58.3	4.3	37.4	0.069	0.531	20.082497	-99.633379
T. IZQ. ACULCO	125.00	1	1	20609	58.1	4.3	6.7	7.4	16.5	1.8	4.6	0.6	58.1	4.3	37.6	0.067	0.502	20.095339	-99.691017
T. IZQ. ACULCO	125.00	1	2	20449	57.4	4.4	7.1	7.6	16.6	1.8	4.5	0.6	57.4	4.4	38.2	0.071	0.502	20.095504	-99.690828
T. IZQ. ACULCO	125.00	3	1	19521	56.9	4.4	7.4	7.1	17.3	1.8	4.5	0.6	56.9	4.4	38.7	0.081	0.501	20.109274	-99.705413
T. IZQ. ACULCO	125.00	3	2	19427	57.6	4.4	6.7	7.4	16.9	1.8	4.6	0.6	57.6	4.4	38.0	0.084	0.501	20.109173	-99.705426
LIM. EDOS. TERM. MEX. PPIA. ORO.	145.50																		
CASETA DE COBRO PALMILLAS	145.80	2	0	42075	58.0	4.5	6.9	7.2	16.5	1.8	4.5	0.6	58.0	4.5	37.5			20.296103	-99.928994
T. IZQ. TOLUCA	148.50	1	1	15551	57.4	4.5	6.7	7.4	16.9	1.8	4.7	0.6	57.4	4.5	38.1	0.068	0.525	20.293284	-99.924772
T. IZQ. TOLUCA	148.50	1	2	17216	57.4	4.6	6.8	7.2	17.2	1.8	4.4	0.6	57.4	4.6	38.0	0.064	0.525	20.293284	-99.924772
T. IZQ. TOLUCA	148.50	3	1	20756	56.6	4.7	7.0	7.7	17.3	1.8	4.3	0.6	56.6	4.7	38.7	0.058	0.520	20.306857	-99.934387
T. IZQ. TOLUCA	148.50	3	2	22522	59.3	4.1	6.4	7.0	16.6	1.7	4.3	0.6	59.3	4.1	36.6	0.059	0.520	20.306834	-99.934974
T. DER. PONIENTE SAN JUAN DEL RIO	164.10	3	1	26029	58.7	4.5	7.0	7.4	15.6	1.7	4.5	0.6	58.7	4.5	36.8	0.072	0.503	20.373440	-99.994201
T. DER. PONIENTE SAN JUAN DEL RIO	164.10	3	2	26373	58.0	4.7	7.3	7.1	16.1	1.8	4.4	0.6	58.0	4.7	37.3	0.072	0.503	20.373440	-99.994201
T. IZQ. ACAMBARO	170.45	3	1	23891	57.2	4.7	6.9	7.5	16.9	1.8	4.4	0.6	57.2	4.7	38.1	0.075	0.503	20.444776	-100.076049
T. IZQ. ACAMBARO	170.45	3	2	24184	57.9	4.2	7.2	6.9	17.1	1.7	4.4	0.6	57.9	4.2	37.9	0.070	0.503	20.444776	-100.076049
T. DER. LIBRAMIENTO DE QUERETARO A SAN LUIS POTOSI	207.00	1	1	25694	57.5	4.5	7.1	7.4	16.4	1.8	4.7	0.6	57.5	4.5	38.0	0.085	0.517	20.588187	-100.350777
T. DER. LIBRAMIENTO DE QUERETARO A SAN LUIS POTOSI	207.00	1	2	27450	59.4	4.3	6.4	7.2	16.1	1.8	4.2	0.6	59.4	4.3	36.3	0.087	0.517	20.588187	-100.350777
T. DER. LIBRAMIENTO DE QUERETARO A SAN LUIS POTOSI	207.00	3	1	30421	57.7	4.2	6.9	7.3	17.2	1.8	4.3	0.6	57.7	4.2	38.1	0.076	0.502	20.578427	-100.378707
T. DER. LIBRAMIENTO DE QUERETARO A SAN LUIS POTOSI	207.00	3	2	32501	59.3	4.4	7.0	6.7	15.6	1.8	4.6	0.6	59.3	4.4	36.3	0.075	0.502	20.578427	-100.378707



QUERETARO

9 CARR: MEXICO - QUERETARO (CUOTA)

CLAVE: 00411

RUTA: MEX-057-MEX-057D

AÑO: 2010

LUGAR	ESTACION				CLASIFICACION VEHICULAR EN PORCIENTO								COORDENADAS						
	KM	TE	SC	TDPA	A	B	C2	C3	T3S2	T3S3	T3S2R4	OTROS	A	B	C	K'	D	LATITUD	LONGITUD
QUERETARO	211.60																		

10 CARR: QUERETARO - IRAPUATO (CUOTA)

CLAVE: 00423

RUTA: MEX-045D

AÑO: 2010

LUGAR	ESTACION				CLASIFICACION VEHICULAR EN PORCIENTO								COORDENADAS						
	KM	TE	SC	TDPA	A	B	C2	C3	T3S2	T3S3	T3S2R4	OTROS	A	B	C	K'	D	LATITUD	LONGITUD
QUERETARO	0.00	3	1	16839	56.2	3.7	7.4	8.7	17.9	2.0	3.6	0.5	56.2	3.7	40.1	0.069	0.508	20.576670	-100.420304
QUERETARO	0.00	3	2	16309	57.8	3.3	7.6	8.0	17.2	2.1	3.5	0.5	57.8	3.3	38.9	0.067	0.508	20.576670	-100.420304
CASETA DE COBRO QUERETARO	7.00	1	0	29886	57.2	3.5	7.4	8.4	17.4	2.0	3.6	0.5	57.2	3.5	39.3			20.572188	-100.472977
CASETA DE COBRO QUERETARO	7.00	3	0	21519	70.1	4.7	6.2	5.1	7.8	1.0	4.5	0.6	70.1	4.7	25.2			20.572188	-100.472977
LIM. EDOS. TERM. QRO. PPIA. GTO.	8.97																		
X. C. CELAYA - DOLORES HIDALGO	44.10	1	1	10282	68.8	4.9	6.4	5.3	8.2	1.0	4.8	0.6	68.8	4.9	26.3	0.093	0.509	20.557066	-100.812171
X. C. CELAYA - DOLORES HIDALGO	44.10	1	2	9899	70.4	4.4	6.3	5.2	7.9	1.0	4.2	0.6	70.4	4.4	25.2	0.088	0.509	20.556931	-100.812224
CASETA DE COBRO CERRO GORDO	78.90	1	0	19743	67.4	6.7	4.6	5.5	9.1	1.3	4.9	0.5	67.4	6.7	25.9			20.591581	-101.136839
CASETA DE COBRO CERRO GORDO	78.90	3	0	20636	69.5	6.5	4.5	5.2	8.5	1.0	4.4	0.4	69.5	6.5	24.0			20.591581	-101.136839
T. IZQ. SALAMANCA	81.54	1	1	9048	70.4	6.5	4.4	4.9	8.0	1.0	4.4	0.4	70.4	6.5	23.1	0.085	0.500	20.597610	-101.176682
T. IZQ. SALAMANCA	81.54	1	2	9042	68.5	6.5	4.4	5.4	9.2	1.0	4.6	0.4	68.5	6.5	25.0	0.086	0.500	20.597610	-101.176682
T. IZQ. SALAMANCA	81.54	3	1	9190	67.0	6.9	4.9	5.7	9.2	1.1	4.7	0.5	67.0	6.9	26.1	0.089	0.501	20.600781	-101.192119
T. IZQ. SALAMANCA	81.54	3	2	9214	67.7	6.9	4.9	5.5	9.0	1.0	4.5	0.5	67.7	6.9	25.4	0.092	0.501	20.600781	-101.192119
CASETA DE COBRO SALAMANCA	83.25	1	0	18059	66.8	7.0	4.8	5.8	9.5	1.1	4.5	0.5	66.8	7.0	26.2			20.598618	-101.180922
CASETA DE COBRO SALAMANCA	83.25	2	0	21154	70.9	6.0	4.4	5.3	8.2	1.0	3.8	0.4	70.9	6.0	23.1			20.598618	-101.180922
CASETA DE COBRO SALAMANCA	83.25	3	0	20255	69.9	6.3	4.5	5.4	8.5	1.0	4.0	0.4	69.9	6.3	23.8			20.598618	-101.180922
T. DER. LIBRAMIENTO DE IRAPUATO	96.30	1	1	8471	69.3	6.2	4.7	5.5	8.7	1.0	4.2	0.4	69.3	6.2	24.5	0.092	0.502	20.652855	-101.287027
T. DER. LIBRAMIENTO DE IRAPUATO	96.30	1	2	8414	70.8	5.9	4.3	5.2	8.4	1.0	4.0	0.4	70.8	5.9	23.3	0.095	0.502	20.652855	-101.287027
T. DER. LIBRAMIENTO DE IRAPUATO	96.30	3	1	11106	70.6	6.0	4.6	5.4	8.1	1.0	3.9	0.4	70.6	6.0	23.4	0.089	0.501	20.654529	-101.295583
T. DER. LIBRAMIENTO DE IRAPUATO	96.30	3	2	11041	70.4	6.5	4.5	5.5	7.9	1.0	3.8	0.4	70.4	6.5	23.1	0.091	0.501	20.654529	-101.295583
T. C. IRAPUATO - ZAPOTLANEJO	104.70																		

11 CARR: AJUCHITLAN - COLON

CLAVE: 22010

RUTA: QRO-005

AÑO: 2010

LUGAR	ESTACION				CLASIFICACION VEHICULAR EN PORCIENTO								COORDENADAS						
	KM	TE	SC	TDPA	A	B	C2	C3	T3S2	T3S3	T3S2R4	OTROS	A	B	C	K'	D	LATITUD	LONGITUD
T. C. EL COLORADO - HIGUERILLAS	0.00	3	0	6410	84.9	5.6	5.0	0.6	2.8	0.4	0.1	0.6	84.9	5.6	9.5	0.067	0.502	20.698359	-100.018027
COLON	14.00	1	0	6440	84.6	5.2	5.2	0.5	3.1	0.4	0.1	0.9	84.6	5.2	10.2	0.066	0.504	20.767619	-100.048210

QUERETARO

12 CARR: AJUCHITLAN - EZEQUIEL MONTES

CLAVE: 22005

RUTA: QRO-005

AÑO: 2010

LUGAR	ESTACION				CLASIFICACION VEHICULAR EN PORCIENTO								COORDENADAS						
	KM	TE	SC	TDPA	A	B	C2	C3	T3S2	T3S3	T3S2R4	OTROS	A	B	C	K'	D	LATITUD	LONGITUD
T. C. EL COLORADO - HIGUERILLAS	0.00	3	0	6896	74.1	6.3	4.9	2.4	4.2	2.3	4.8	1.0	74.1	6.3	19.6	0.069	0.508	20.703879	-99.978824
EZEQUIEL MONTES	10.60	1	0	8649	74.0	6.1	4.5	2.6	4.8	2.0	5.0	1.0	74.0	6.1	19.9	0.070	0.501	20.669806	-99.909271

13 CARR: EL COLORADO - HIGUERILLAS

CLAVE: 22004

RUTA: QRO-004

AÑO: 2010

LUGAR	ESTACION				CLASIFICACION VEHICULAR EN PORCIENTO								COORDENADAS						
	KM	TE	SC	TDPA	A	B	C2	C3	T3S2	T3S3	T3S2R4	OTROS	A	B	C	K'	D	LATITUD	LONGITUD
T. C. MEXICO - QUERETARO (CUOTA)	0.00	3	1	9658	83.0	1.7	3.5	2.2	4.2	2.5	2.2	0.7	83.0	1.7	15.3	0.087	0.501	20.563922	-100.219627
T. C. MEXICO - QUERETARO (CUOTA)	0.00	3	2	9695	82.9	1.9	3.6	2.2	4.1	2.4	2.1	0.8	82.9	1.9	15.2	0.088	0.501	20.563922	-100.219627
T. IZQ. CHICHIMEQUILLAS	3.80	3	1	6886	86.8	1.8	2.1	1.8	2.8	1.8	2.1	0.8	86.8	1.8	11.4	0.091	0.501	20.582358	-100.195902
T. IZQ. CHICHIMEQUILLAS	3.80	3	2	6909	86.6	1.8	2.4	1.7	2.9	1.7	2.1	0.8	86.6	1.8	11.6	0.094	0.501	20.582358	-100.195902
X. C. QUERETARO - TEQUISQUIAPAN	9.10	3	0	4502	77.6	3.8	4.1	3.7	4.1	2.6	3.3	0.8	77.6	3.8	18.6	0.087	0.503	20.615559	-100.153508
T. DER. EZEQUIEL MONTES	31.90	1	1	4493	77.9	3.5	4.5	3.1	4.6	2.4	3.5	0.5	77.9	3.5	18.6	0.085	0.504	20.702487	-99.992512
T. DER. EZEQUIEL MONTES	31.90	1	2	4425	79.0	3.4	4.9	2.0	4.3	2.0	3.6	0.8	79.0	3.4	17.6	0.087	0.504	20.702457	-99.992516
T. DER. EZEQUIEL MONTES	31.90	3	0	3408	78.6	4.2	4.5	1.9	4.3	2.8	3.2	0.5	78.6	4.2	17.2	0.062	0.502	20.712539	-99.974174
T. IZQ. SAN PABLO TOLIMAN	57.00	3	0	936	80.5	3.4	3.8	0.7	4.9	2.5	2.9	1.3	80.5	3.4	16.1	0.083	0.505	20.855414	-99.892143
T. C. SAN JUAN DEL RIO - XILITLA	81.90	1	0	957	80.0	3.7	4.7	2.0	4.2	2.0	2.8	0.6	80.0	3.7	16.3	0.092	0.509	20.943026	-99.749871

14 CARR: HACIENDA PARAISO - CHICHIMEQUILLAS

CLAVE: 22001

RUTA: QRO-001

AÑO: 2010

LUGAR	ESTACION				CLASIFICACION VEHICULAR EN PORCIENTO								COORDENADAS						
	KM	TE	SC	TDPA	A	B	C2	C3	T3S2	T3S3	T3S2R4	OTROS	A	B	C	K'	D	LATITUD	LONGITUD
HACIENDA PARAISO	0.00	3	0	7079	75.8	2.0	6.4	5.3	6.0	1.6	2.4	0.5	75.8	2.0	22.2	0.087	0.501	20.582551	-100.200728
T. DER. NAVAJAS	7.90	3	0	3748	77.0	1.8	7.3	4.1	5.0	1.8	2.3	0.7	77.0	1.8	21.2	0.082	0.501	20.644988	-100.232098
LA GRIEGA	10.35	3	0	2875	75.4	1.9	8.0	4.4	5.0	1.9	2.6	0.8	75.4	1.9	22.7	0.083	0.502	20.676805	-100.239766
AMASCALA	15.45	3	0	2785	76.3	2.1	7.2	4.2	5.6	1.8	2.1	0.7	76.3	2.1	21.6	0.081	0.509	20.711902	-100.269931
CHICHIMEQUILLAS	26.61																		

15 CARR: LA CULATA - SAN JOAQUIN

CLAVE: 22021

RUTA: QRO-021

AÑO: 2010

LUGAR	ESTACION				CLASIFICACION VEHICULAR EN PORCIENTO								COORDENADAS						
	KM	TE	SC	TDPA	A	B	C2	C3	T3S2	T3S3	T3S2R4	OTROS	A	B	C	K'	D	LATITUD	LONGITUD
LA CULATA	0.00	3	0	1187	81.8	3.0	4.2	2.9	2.9	2.2	2.3	0.7	81.8	3.0	15.2	0.097	0.506	20.885328	-99.705794
SAN JOAQUIN	31.80	1	0	1584	84.6	3.3	4.0	1.8	1.2	2.8	1.6	0.7	84.6	3.3	12.1	0.090	0.500	20.900889	-99.575989

QUERETARO

16 CARR: LIBRAMIENTO DE SAN JUAN DEL RIO

CLAVE: 22266

RUTA: QRO

AÑO: 2010

LUGAR	ESTACION				CLASIFICACION VEHICULAR EN PORCIENTO								COORDENADAS						
	KM	TE	SC	TDPA	A	B	C2	C3	T3S2	T3S3	T3S2R4	OTROS	A	B	C	K'	D	LATITUD	LONGITUD
T. C. MEXICO - QUERETARO (DESPUES DEL F.F.C.C.)	0.00	3	0	19834	81.0	2.3	2.7	1.2	6.2	3.6	2.1	0.9	81.0	2.3	16.7	0.074	0.504	20.381559	-99.985312
T. C. SAN JUAN DEL RIO - XILITLA	5.05	1	1	8420	80.4	3.1	4.4	3.7	3.1	2.4	2.2	0.7	80.4	3.1	16.5	0.095	0.544	20.412528	-99.981619
T. C. SAN JUAN DEL RIO - XILITLA	5.05	1	2	7511	79.6	2.4	5.1	3.8	3.7	2.5	2.1	0.8	79.6	2.4	18.0	0.098	0.544	20.412528	-99.981619

17 CARR: LIBRAMIENTO NORTE DE QUERETARO

CLAVE: 22500

RUTA: QRO

AÑO: 2010

LUGAR	ESTACION				CLASIFICACION VEHICULAR EN PORCIENTO								COORDENADAS						
	KM	TE	SC	TDPA	A	B	C2	C3	T3S2	T3S3	T3S2R4	OTROS	A	B	C	K'	D	LATITUD	LONGITUD
T. C. QUERETARO - SAN LUIS POTOSI	0.00	3	1	30134	73.5	4.5	7.7	2.6	3.7	2.8	4.6	0.6	73.5	4.5	22.0	0.071	0.504	20.621278	-100.417167
T. C. QUERETARO - SAN LUIS POTOSI	0.00	3	2	29698	71.6	4.7	7.6	3.1	3.5	3.2	5.8	0.5	71.6	4.7	23.7	0.074	0.504	20.621278	-100.417167
T. C. MEXICO - QUERETARO	8.00	1	1	23825	72.7	4.6	7.2	2.7	4.2	2.5	5.4	0.7	72.7	4.6	22.7	0.099	0.512	20.586139	-100.363167
T. C. MEXICO - QUERETARO	8.00	1	2	22731	72.9	4.5	7.4	2.2	4.0	2.2	6.2	0.6	72.9	4.5	22.6	0.088	0.512	20.586139	-100.363167

18 CARR: LIBRAMIENTO SURPONIENTE DE QUERETARO

CLAVE:

RUTA: QRO

AÑO: 2010

LUGAR	ESTACION				CLASIFICACION VEHICULAR EN PORCIENTO								COORDENADAS						
	KM	TE	SC	TDPA	A	B	C2	C3	T3S2	T3S3	T3S2R4	OTROS	A	B	C	K'	D	LATITUD	LONGITUD
T.C. MEXICO - QUERETARO	0.00	3	1	13754	76.3	3.8	2.9	1.0	7.3	2.3	5.5	0.9	76.3	3.8	19.9	0.062	0.513	20.567982	-100.357352
T.C. MEXICO - QUERETARO	0.00	3	2	13802	58.5	6.8	3.1	2.6	8.1	9.7	10.3	0.9	58.5	6.8	34.7	0.069	0.513	20.567982	-100.357352
X.C. QUERETARO - ENT. SAN MARTIN	4.00	3	0	9864	56.8	6.7	3.7	2.6	9.8	9.8	9.7	0.9	56.8	6.7	36.5	0.100	0.501	20.551156	-100.371997
T.C. VILLA DEL PUEBLITO - HUIMILPAN	14.39	3	0	7974	55.3	6.0	3.3	1.3	11.5	10.3	11.3	1.0	55.3	6.0	38.7	0.067	0.502	20.529698	-100.445500

19 CARR: PEÑA COLORADA - EL RODEO

CLAVE: 22002

RUTA: QRO

AÑO: 2010

LUGAR	ESTACION				CLASIFICACION VEHICULAR EN PORCIENTO								COORDENADAS						
	KM	TE	SC	TDPA	A	B	C2	C3	T3S2	T3S3	T3S2R4	OTROS	A	B	C	K'	D	LATITUD	LONGITUD
T. C. MEXICO - QUERETARO	0.00	3	0	9735	77.5	1.5	8.8	3.4	4.4	1.5	2.0	0.9	77.5	1.5	21.0	0.076	0.504	20.582285	-100.252451
X. C. QUERETARO - TEQUISQUIAPAN	9.00	1	0	1586	76.2	3.6	5.9	4.3	3.2	3.5	2.6	0.7	76.2	3.6	20.2	0.070	0.505	20.633977	-100.260290
EL RODEO	11.00	1	0	1396	77.3	3.1	5.7	5.1	2.6	2.8	2.5	0.9	77.3	3.1	19.6	0.088	0.505	20.659876	-100.258899

20 CARR: QUERETARO - ENT. SAN MARTIN

CLAVE: 22067

RUTA: QRO

AÑO: 2010

LUGAR	ESTACION				CLASIFICACION VEHICULAR EN PORCIENTO								COORDENADAS						
	KM	TE	SC	TDPA	A	B	C2	C3	T3S2	T3S3	T3S2R4	OTROS	A	B	C	K'	D	LATITUD	LONGITUD
T. C. MEXICO - QUERETARO	0.00	3	0	17748	88.8	2.8	2.0	0.6	2.4	0.6	2.2	0.6	88.8	2.8	8.4	0.068	0.501	20.558751	-100.367973



QUERETARO

24 CARR: RAMAL A LA ESTANCIA

CLAVE: 22504

RUTA: QRO

AÑO: 2010

LUGAR	ESTACION				CLASIFICACION VEHICULAR EN PORCIENTO								COORDENADAS						
	KM	TE	SC	TDPA	A	B	C2	C3	T3S2	T3S3	T3S2R4	OTROS	A	B	C	K'	D	LATITUD	LONGITUD
T. C. MEXICO - QUERETARO (CUOTA)	0.00	3	0	3744	88.8	2.2	3.2	1.1	3.3	0.4	0.5	0.5	88.8	2.2	9.0	0.068	0.517	20.425641	-100.061537
LA ESTANCIA	3.00																		

25 CARR: RAMAL A TOLIMAN

CLAVE: 22265

RUTA: QRO

AÑO: 2010

LUGAR	ESTACION				CLASIFICACION VEHICULAR EN PORCIENTO								COORDENADAS						
	KM	TE	SC	TDPA	A	B	C2	C3	T3S2	T3S3	T3S2R4	OTROS	A	B	C	K'	D	LATITUD	LONGITUD
T. C. EL COLORADO - HIGUERILLAS	0.00	3	0	2352	87.5	0.9	8.0	0.3	1.8	0.3	0.3	0.9	87.5	0.9	11.6	0.088	0.504	20.856308	-99.894057
TOLIMAN	7.00	1	0	2254	86.6	0.5	8.6	0.1	2.4	0.2	0.8	0.8	86.6	0.5	12.9	0.089	0.504	20.895678	-99.918403

26 CARR: SAN JUAN DEL RIO - AMEALCO

CLAVE: 22011

RUTA: QRO

AÑO: 2010

LUGAR	ESTACION				CLASIFICACION VEHICULAR EN PORCIENTO								COORDENADAS						
	KM	TE	SC	TDPA	A	B	C2	C3	T3S2	T3S3	T3S2R4	OTROS	A	B	C	K'	D	LATITUD	LONGITUD
T. C. MEXICO - QUERETARO	0.00	3	0	6659	85.6	4.1	3.1	1.0	3.7	0.7	1.1	0.7	85.6	4.1	10.3	0.083	0.501	20.379443	-100.014260
AMEALCO	28.00	1	0	3974	86.6	4.0	3.1	0.9	3.6	0.4	1.0	0.4	86.6	4.0	9.4	0.102	0.504	20.196606	-100.137883

27 CARR: T. C. (VILLA DEL PUEBLITO - HUIMILPAN) - CORONEO

CLAVE: 00155

RUTA: QRO-GTO

AÑO: 2010

LUGAR	ESTACION				CLASIFICACION VEHICULAR EN PORCIENTO								COORDENADAS						
	KM	TE	SC	TDPA	A	B	C2	C3	T3S2	T3S3	T3S2R4	OTROS	A	B	C	K'	D	LATITUD	LONGITUD
T. C. VILLA DEL PUEBLITO - HUIMILPAN	0.00	3	0	2403	81.4	7.4	6.4	1.2	2.2	0.5	0.2	0.7	81.4	7.4	11.2	0.089	0.527	20.516641	-100.429828
LIM. EDOS. TERM. QRO. PPIA. GTO.	20.00																		
CORONEO	45.20	1	0	3008	81.0	6.9	7.1	3.6	0.3	0.3	0.2	0.6	81.0	6.9	12.1	0.079	0.504	20.210897	-100.365821

28 CARR: VILLA DEL PUEBLITO - HUIMILPAN

CLAVE: 22503

RUTA: QRO

AÑO: 2010

LUGAR	ESTACION				CLASIFICACION VEHICULAR EN PORCIENTO								COORDENADAS						
	KM	TE	SC	TDPA	A	B	C2	C3	T3S2	T3S3	T3S2R4	OTROS	A	B	C	K'	D	LATITUD	LONGITUD
T. C. QUERETARO - IRAPUATO (LIBRE)	0.00	3	0	21451	89.0	2.4	4.3	2.5	0.6	0.3	0.4	0.5	89.0	2.4	8.6	0.065	0.501	20.529937	-100.441507
HUIMILPAN	27.00	1	0	1974	86.3	2.7	6.4	3.7	0.2	0.1	0.1	0.5	86.3	2.7	11.0	0.091	0.500	20.390355	-100.283944

QUERETARO

29 CARR: TOLUCA - PALMILLAS

CLAVE: 00496

RUTA: EM(D)-MEX-055

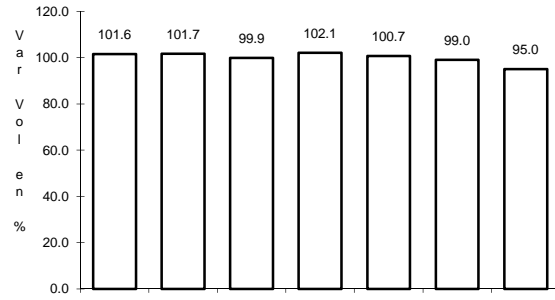
AÑO: 2010

LUGAR	ESTACION				CLASIFICACION VEHICULAR EN PORCIENTO									COORDENADAS					
	KM	TE	SC	TDPA	A	B	C2	C3	T3S2	T3S3	T3S2R4	OTROS	A	B	C	K'	D	LATITUD	LONGITUD
TOLUCA	0.00																		
T. IZO. CALIXTLAHUACA DE RAYON (BAJA)	7.21	3	1	5532	76.9	6.2	7.0	2.8	4.5	1.4	0.9	0.3	76.9	6.2	16.9	0.073	0.505	19.339369	-99.670435
T. IZO. CALIXTLAHUACA DE RAYON (ALTA)	7.21	3	1	14564	78.1	6.1	6.5	2.5	4.3	1.3	0.9	0.3	78.1	6.1	15.8	0.075	0.501	19.339404	-99.670412
T. IZO. CALIXTLAHUACA DE RAYON (BAJA)	7.21	3	2	5427	76.3	6.7	7.1	2.5	4.8	1.4	0.9	0.3	76.3	6.7	17.0	0.071	0.505	19.339394	-99.670411
T. IZO. CALIXTLAHUACA DE RAYON (ALTA)	7.21	3	2	14484	76.1	6.8	7.1	2.6	4.9	1.3	0.9	0.3	76.1	6.8	17.1	0.074	0.501	19.339387	-99.670404
EL DORADO	16.00	1	1	15441	77.9	6.3	6.3	2.7	4.5	1.2	0.8	0.3	77.9	6.3	15.8	0.071	0.508	19.402848	-99.714002
EL DORADO	16.00	1	2	15923	77.8	6.0	6.6	2.5	4.6	1.3	0.9	0.3	77.8	6.0	16.2	0.073	0.508	19.402845	-99.714001
IXTLAHUACA DE RAYON	35.58	3	0	24764	77.9	6.1	6.6	2.6	4.4	1.2	0.9	0.3	77.9	6.1	16.0	0.062	0.507	19.581529	-99.763637
PASTEJE	45.20	1	1	8506	78.0	6.1	6.3	2.5	4.6	1.3	0.9	0.3	78.0	6.1	15.9	0.082	0.501	19.668931	-99.800868
PASTEJE	45.20	1	2	8465	77.3	6.5	6.5	2.5	4.7	1.3	0.9	0.3	77.3	6.5	16.2	0.080	0.501	19.668864	-99.800928
ATLACOMULCO	65.00	1	1	14412	78.2	6.0	6.5	2.6	4.3	1.2	0.9	0.3	78.2	6.0	15.8	0.082	0.503	19.778219	-99.862895
ATLACOMULCO	65.00	1	2	14571	76.8	6.4	6.8	2.7	4.8	1.3	0.9	0.3	76.8	6.4	16.8	0.084	0.503	19.778187	-99.862904
ATLACOMULCO	65.00	3	0	9362	77.9	6.2	6.3	2.5	4.7	1.3	0.8	0.3	77.9	6.2	15.9	0.087	0.517	19.815256	-99.871454
ACAMBAY	85.64	3	0	9118	77.9	3.5	5.1	3.0	7.4	1.5	1.3	0.3	77.9	3.5	18.6	0.072	0.556	19.970639	-99.865973
T. DER. ACULCO DE ESPINOZA	104.43	3	0	6924	76.4	3.9	5.3	3.1	8.0	1.7	1.3	0.3	76.4	3.9	19.7	0.076	0.511	20.088332	-99.863253
T. DER. POLOTITLAN	122.73	1	0	7081	77.6	3.4	5.3	3.1	7.6	1.5	1.2	0.3	77.6	3.4	19.0	0.076	0.510	20.228733	-99.902547
LIM. EDOS. TERM. MEX. PPIA. QRO.	128.10																		
T. C. MEXICO - QUERETARO	131.52	1	0	10552	78.2	3.5	5.2	2.9	7.0	1.6	1.3	0.3	78.2	3.5	18.3	0.070	0.510	20.283359	-99.931453

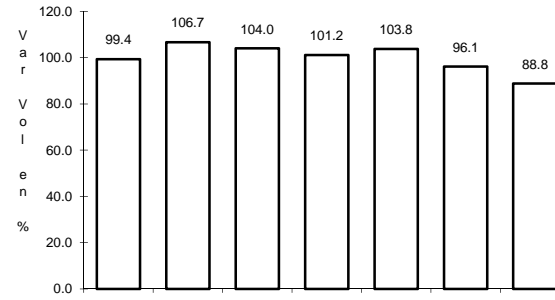
1 CARR: ENT. BUENAVISTA - SAN MIGUEL DE ALLENDE

CLAVE: 00111

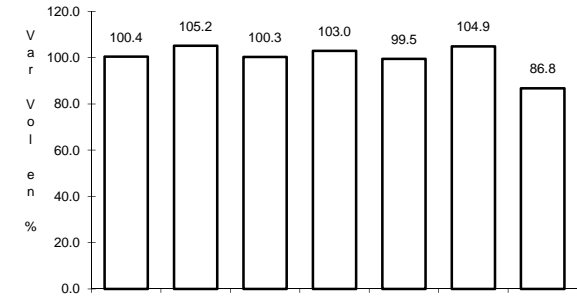
RUTA: MEX



Km: 0.00      Tipo: 3      Sent: 0



Km: 12.00      Tipo: 1      Sent: 0

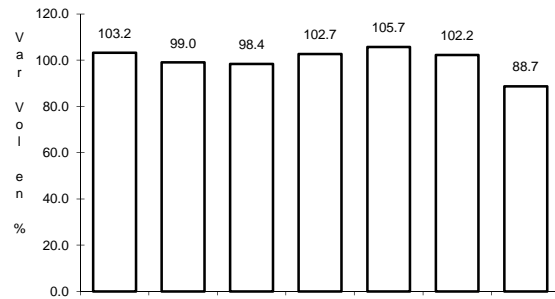


Km: 35.11      Tipo: 1      Sent: 0

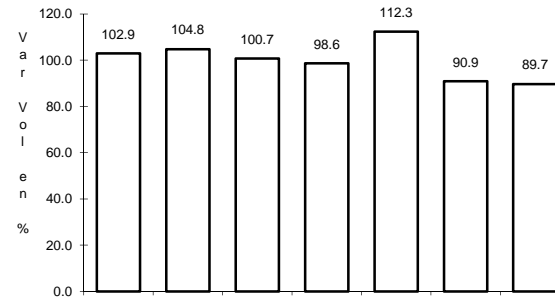
2 CARR: JALPAN DE SERRA - RIO VERDE

CLAVE: 00265

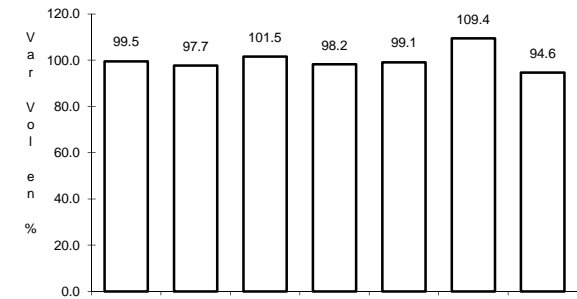
RUTA: MEX-069



Km: 0.00      Tipo: 3      Sent: 0



Km: 48.60      Tipo: 1      Sent: 0

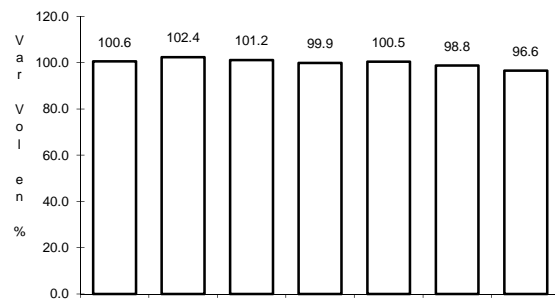


Km: 105.43      Tipo: 1      Sent: 0

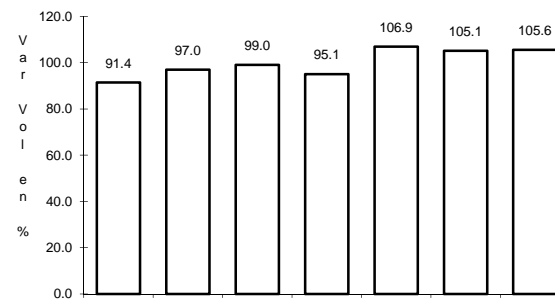
3 CARR: LA NORIA - ACAMBARO

CLAVE: 00131

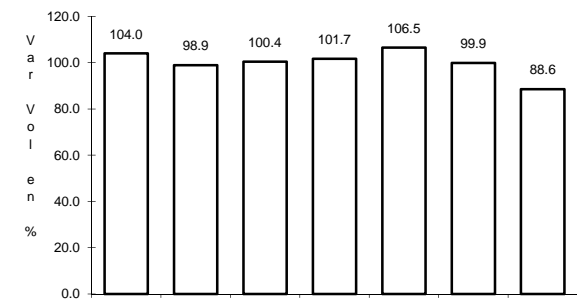
RUTA: MEX-120



Km: 0.00      Tipo: 3      Sent: 0



Km: 59.35      Tipo: 3      Sent: 0



Km: 111.12      Tipo: 1      Sent: 0

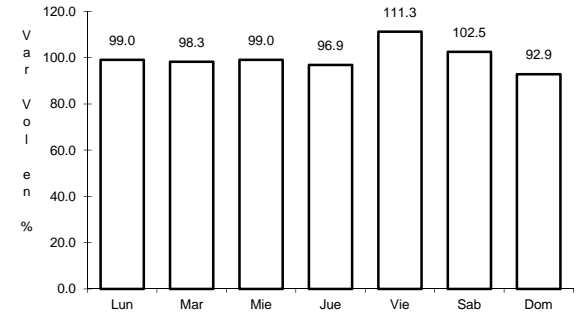
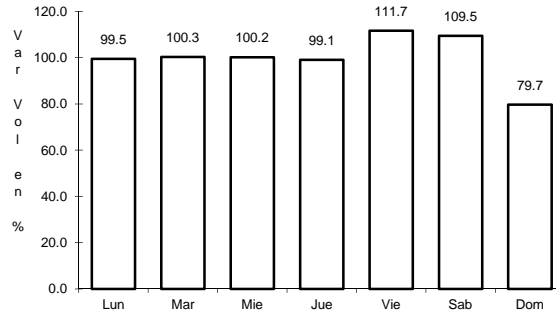
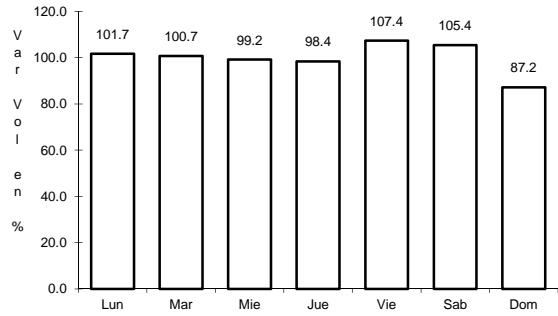




7 CARR: SAN JUAN DEL RIO - XILITLA

CLAVE: 00183

ruta: MEX-120



Km: 5.20

Tipo: 3

Sent: 1

Km: 5.20

Tipo: 3

Sent: 2

Km: 276.98

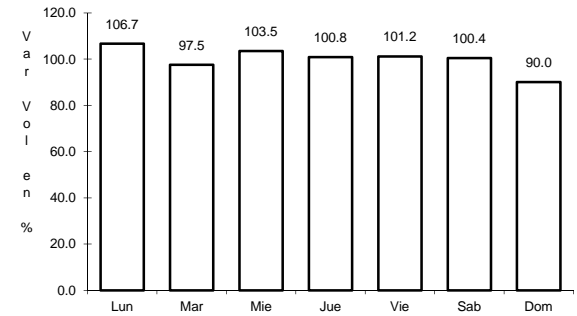
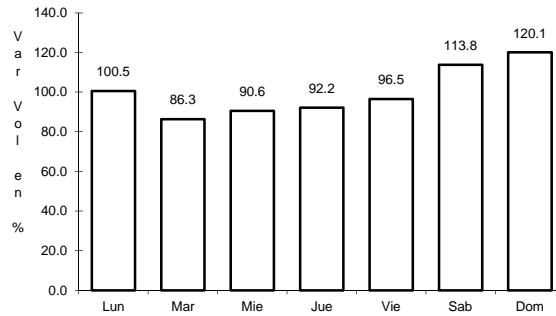
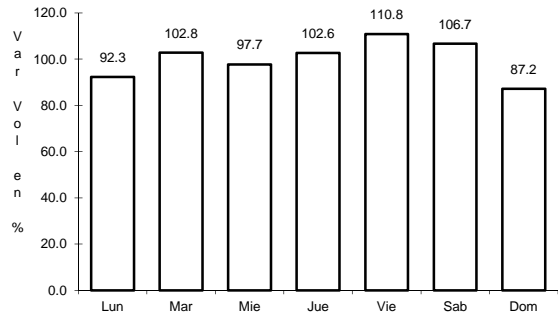
Tipo: 1

Sent: 0

8 CARR: LIBRAMIENTO NORESTE DE QUERETARO (CUOTA)

CLAVE:

ruta: MEX-057D



Km: 0.00

Tipo: 3

Sent: 1

Km: 0.00

Tipo: 3

Sent: 2

Km: 37.50

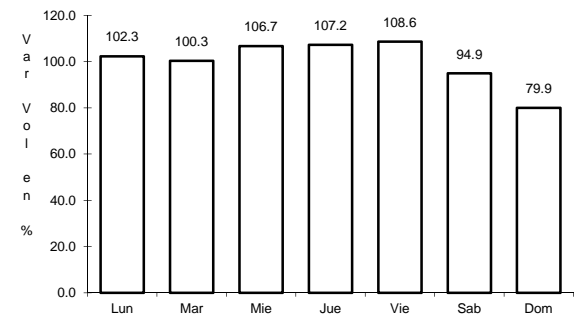
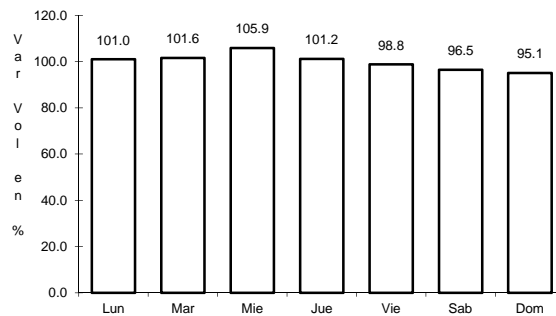
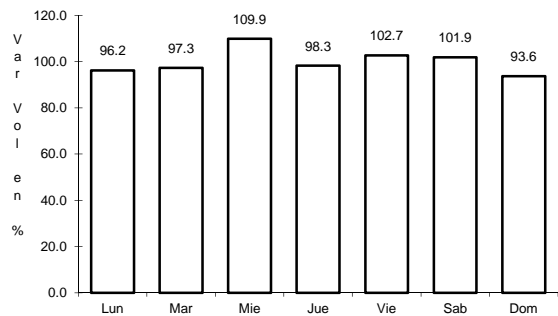
Tipo: 1

Sent: 1

9 CARR: MEXICO - QUERETARO (CUOTA)

CLAVE: 00411

ruta: MEX-057-MEX-057D



Km: 56.18

Tipo: 1

Sent: 1

Km: 56.18

Tipo: 1

Sent: 2

Km: 207.00

Tipo: 3

Sent: 1



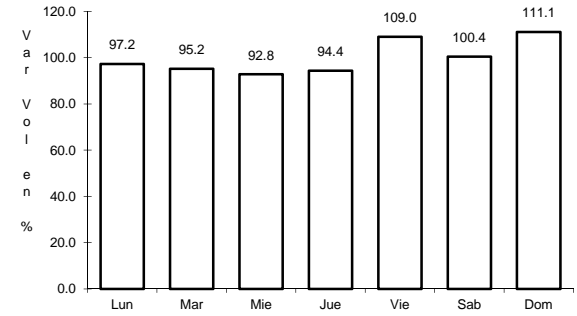
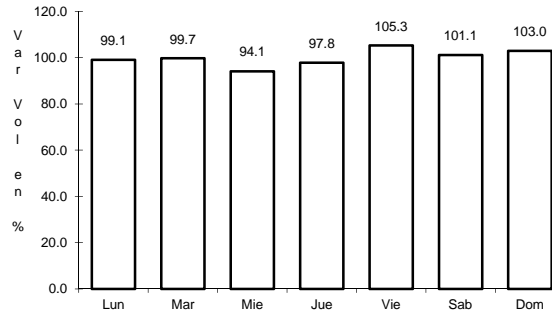
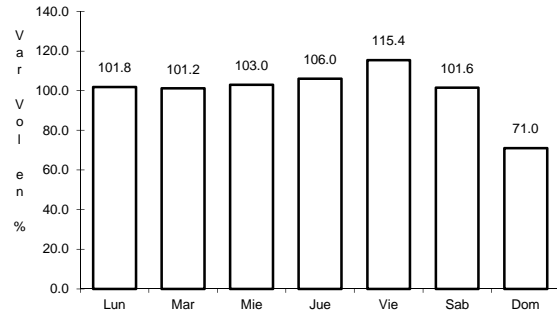




19 CARR: PEÑA COLORADA - EL RODEO

CLAVE: 22002

ruta: QRO



Km: 0.00      Tipo: 3      Sent: 0

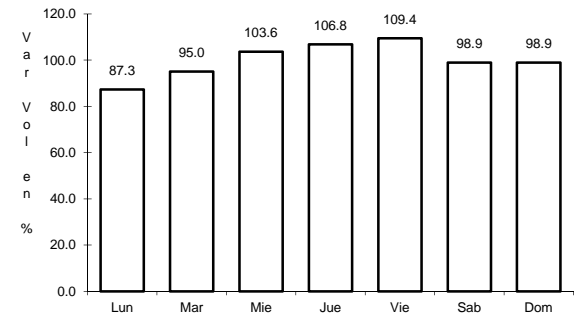
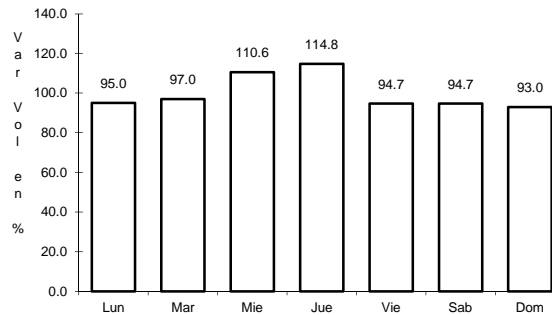
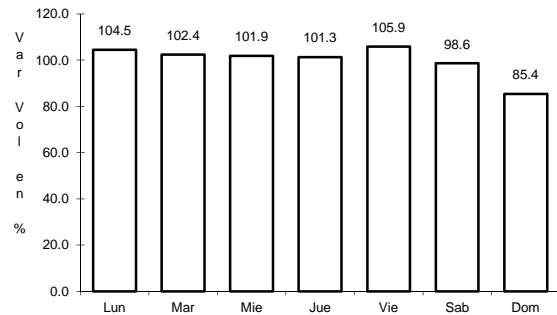
Km: 9.00      Tipo: 1      Sent: 0

Km: 11.00      Tipo: 1      Sent: 0

20 CARR: QUERETARO - ENT. SAN MARTIN

CLAVE: 22067

ruta: QRO



Km: 0.00      Tipo: 3      Sent: 0

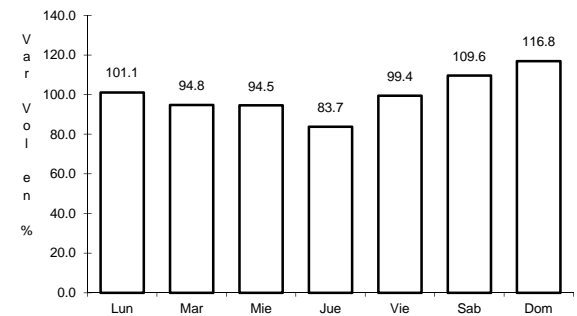
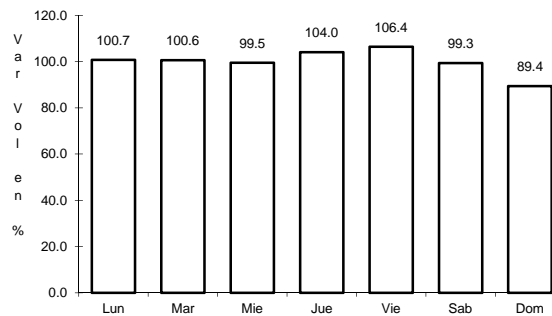
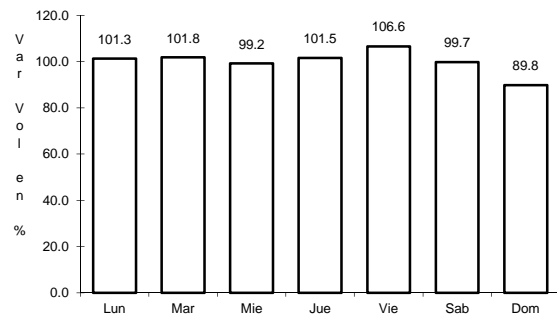
Km: 32.70      Tipo: 1      Sent: 0

Km: 53.00      Tipo: 1      Sent: 0

21 CARR: QUERETARO - ESTACION CHICHIMEQUILLAS

CLAVE: 22270

ruta: QRO



Km: 0.00      Tipo: 3      Sent: 1

Km: 0.00      Tipo: 3      Sent: 2

Km: 18.00      Tipo: 1      Sent: 0





