

Hammond Reef Gold Mine Project Fact Sheet

A FRESH OUTLOOK ON MINING

Winter 2011

Overview

The Hammond Reef Gold Mine Project is located approximately 30 km north of the Town of Atikokan. It is in the early planning stage, meaning many details have not been finalized. The Project consists of three key parts:

1. A mine to extract the gold ore
2. An ore processing facility to produce pure gold from ore
3. A tailings management system to safely contain waste product

The Mine

The main component of the mine site will be two open pit mines producing 17.5 million tonnes of gold ore per year. The mine will also include:

- Waste rock management
- Warehouses, workshops and maintenance facilities
- Chemicals, fuel and explosives storage
- Power supply
- All-weather roads
- Office and support facilities
- Waste and water management

The Ore Processing Facility

The facility will process ore by using:

Crushing and Grinding - These processes reduce the size of ore to allow a physical separation of gold bearing particles from waste material by using flotation. Water is added during the process to create a slurry that can easily be transported through the plant.

Flotation - Chemicals are added to the ore slurry that selectively encourage the gold bearing particles to attach to air bubbles which float to the top of the flotation cell to be skimmed from the surface, producing a gold concentrate and a waste tailings stream.

Cyanide Leaching - Cyanide is added to the gold concentrate to convert the gold to ions (leached gold) in the slurry. The leached gold is absorbed onto activated carbon. The remaining slurry is added to the tailings stream.

Carbon Stripping and Refining - Gold is stripped from the carbon using acid, electricity is used to plate the gold into a solid and the gold is further refined using furnaces to produce gold bullion.

Tailings Management

The processing facility will produce gold and a waste product called tailings. Tailings will be pumped to an area for long term management and containment. Osisko is currently evaluating 6 options for tailings sites.



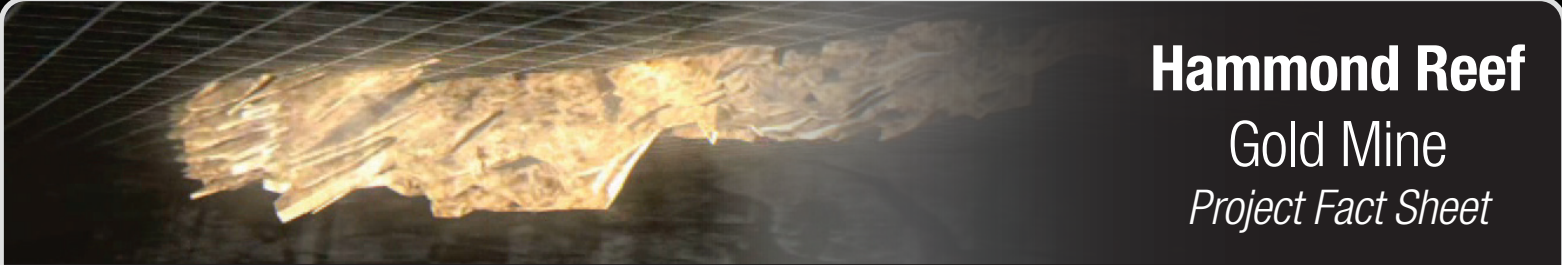
Project Location



Main Camp



Core Logging



Hammond Reef Gold Mine Project Fact Sheet

A FRESH OUTLOOK ON MINING

Winter 2011

Environmental Assessment (EA)

A detailed environmental assessment (EA) will take place before permits can be issued. The EA is a planning tool to determine the project's possible effects on the surrounding communities and natural environment, and to identify and implement solutions to mitigate potential issues.

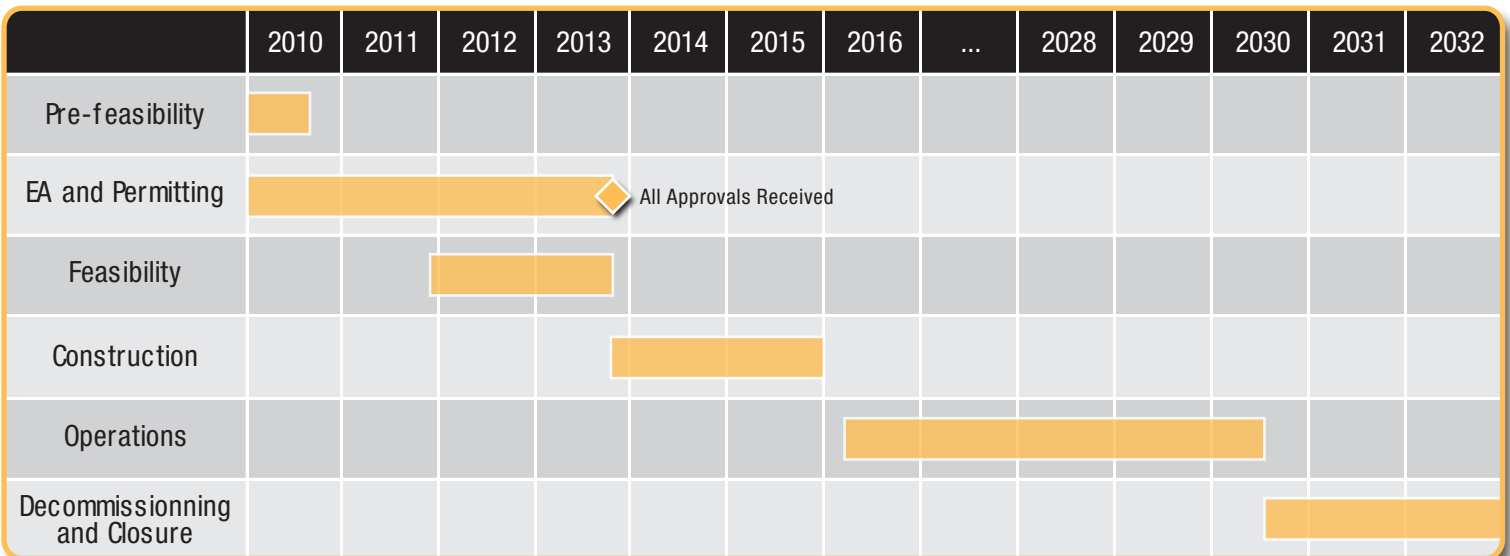
Baseline studies have begun including:

- Water quantity
- Water quality
- Biology
- Socio-economics

The EA is planned to be complete by the end of 2012. Osisko hopes to obtain a permit in 2013 and begin construction. Upon completion of construction, Osisko would like to begin operations in early 2016 to produce gold!



Project Schedule



Contact Us:

Anne Charland
Project Manager
Osisko Hammond Reef Gold Ltd.

Phone: (807) 597-4481 ext 223
Email: acharland@osisko.com

Website: www@osisko.com