

Austermann Collection Fall/Winter 2010 Pattern 33



All rights reserved. No part may be reproduced in any form without written permission from the publisher. This includes the reproduction, translation and microfilming as well as storing and processing in electronic systems. It is also not permitted to scan, save to PC or CD, to change or manipulate images.

**Schoeller Süßen GmbH · Postfach 1160 · D-73073 Süßen ·
Phone +49/7162-93050-15 · Fax +49/7162-430-80 · www.austermann-wolle.de**

Pattern 33 Domino Jacket

Sizes

Instructions are for Woman's Size Small/Medium.

Materials:

Merino Silk from Austermann:

70% Merino Wool superfine, 22% Silk, 8% Cashmere, each ball = approx 115m/50g

11 balls in color #617 Braun (brown)

5 balls in color #606 Camel

3 circular needles size US 6 (4 mm) OR SIZE TO OBTAIN GAUGE from Schoeller + Stahl

One set (5) double-pointed needles (dpn) size US 6 (4 mm) from Schoeller + Stahl

1 crochet hook size E-4 (3,5 mm) from Schoeller + Stahl

6 Leather closures from Prym Art.-Nr. 416 503

Domino: Worked in garter st (K every row), **except for** the 2nd (WS) row which is worked as purl

GAUGE: 20 sts and 30 rows = 4 x 4"/10 x 10cm.

Instructions

Top Raglan Yoke

Cast on 80 sts for the Front, Back and Sleeves. Work in garter st (K every row) as foll: 4 rows in Braun, 4 rows in Camel and 4 rows in Braun.

Then cont at the top right with Camel in the following Raglan shaping:

1 selvage st, K8 (Left Front), P2, K18 (Left Sleeve), P2, K18 (Back), P2, K18 (Right Sleeve), P2, K8 (Right Front), 1 selvage st. The sets of 2 P sts are the center rib between the Front, Back and Sleeves.

Inc 1 st each side of the P2 sts: *Work to 1 st before P2, M1 (insert LH needle into horizontal strand between last st worked and next st on needle, K through back loop of this strand, K1, P2, K1, M1; rep from * 3 times more, work to end— 8 sts increased in row. Work this inc every 4th row 7 times more = 144 sts. Cont in Domino technique.

Work over 9 sts 16 times as foll:

Row 1: K9, turn and purl back.

Row 3: K 1st and 2nd sts tog, K5, K 8th and 9th sts tog, turn and purl back.

Row 5: K 1st and 2nd sts tog, K3, K 6th and 7th sts, turn and purl back.

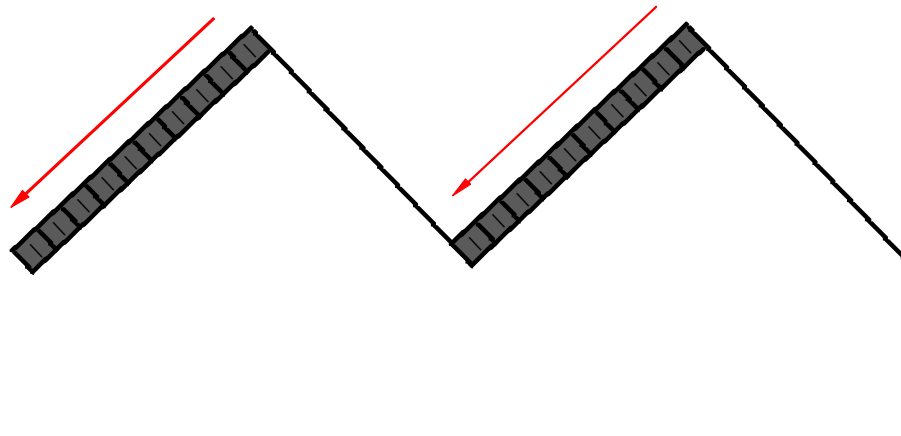
Row 7: K 1st and 2nd sts tog, K1, K 4th and 5th sts tog, turn and purl back.

Row 9: S2KP (slip 2 sts purlwise, K1, pass the 2 slipped sts over the K1). 1 st remains.

Turn.

Along the right side of the side edge, pick up 9 sts = 10 sts. These sts remain on needles and will be worked first on the following rows as a Domino. Go to the next 9 sts.

Rep Rows 1 to 10 for 15 times = Preparation for 16 Dominos. End at the Right Front edge. Go to the Domino technique. Change to color Braun.



Domino technique:

Domino Row 1

Cont to work Right Front in Braun with a 19-st Dominos (work over 19 sts).












First Side Triangle:

10 sts are will be picked up from the side (Arrow 1). Turn work back (Arrow 2) and cast on 9 sts (Arrow 3). Work 19 sts following the Chart of the first side triangle.

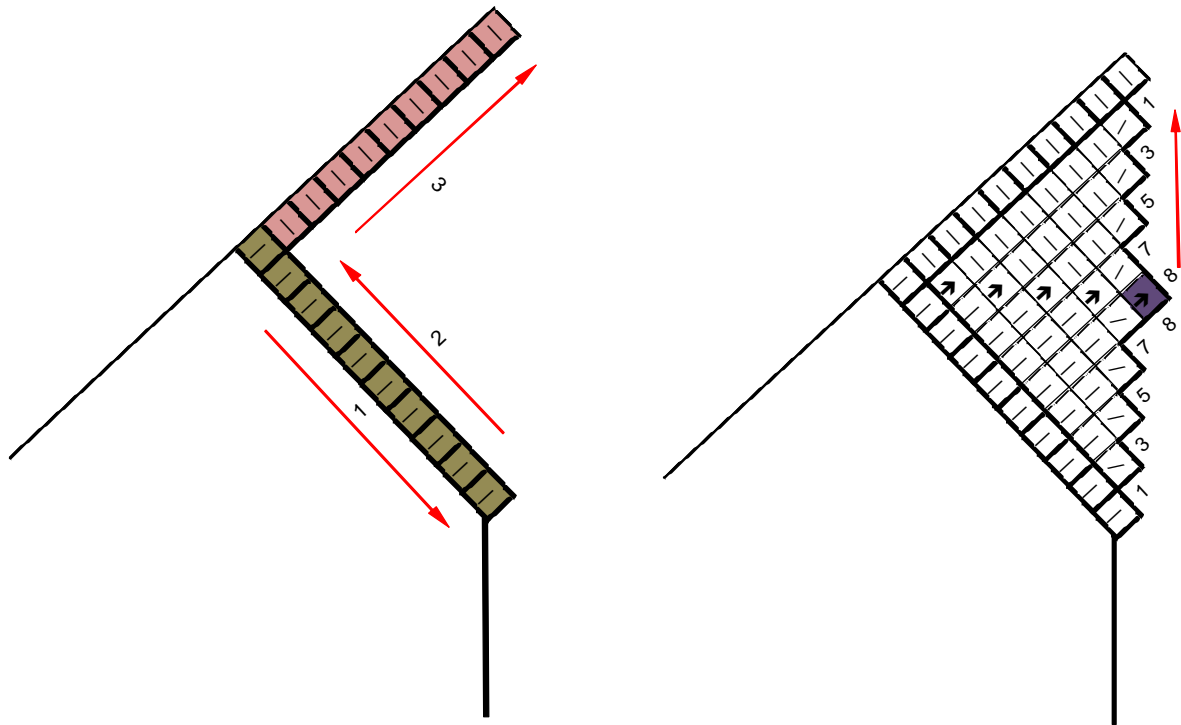
On the RS rows, the 1st and 2nd sts, the center 3 sts and the 2nd to last and last sts are worked tog. The WS rows are worked even without decreases. Cut yarn.

Or:

Pick up a st in the horizontal strand between the 8th and 7th row. There are 2 sts on the needle. Pass the first st over the new picked up st = decrease. Cont to work in this way until the point is reached (Arrow). Go to the 19th Domino of the first row.

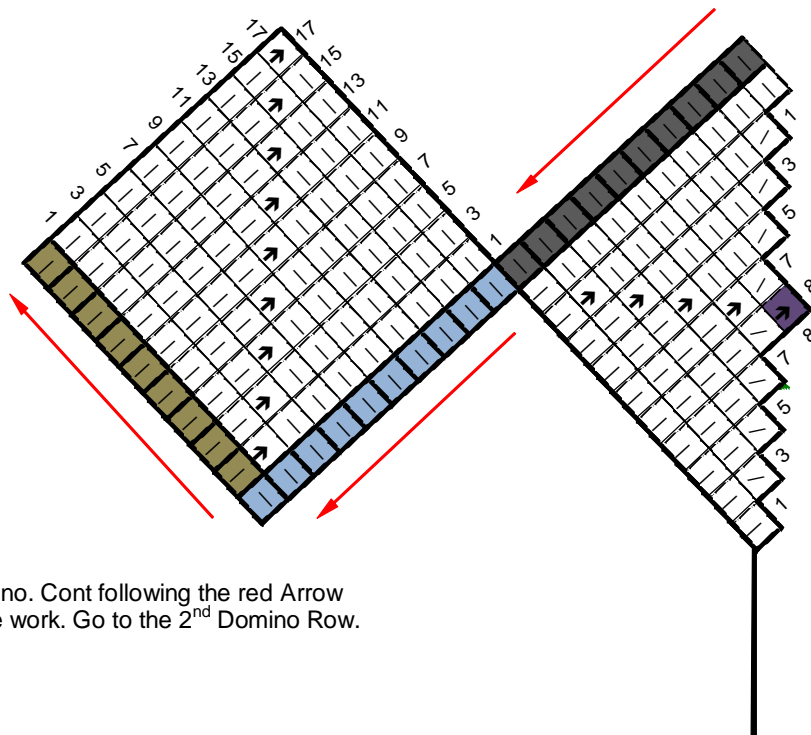
- | | | | |
|---|---|---|--|
|  | = No meaning |  | = knit st |
|  | = sts on needle |  | = SK2P (slip 2 sts purlwise, K1, pass 2 slipped sts over K1) |
|  | = new sts to cast on or pick up and work Domino |  | = K2tog |
|  | = sts to work from previous row |  | = SKP (slip 1, K1, pssso) |
|  | = sts to pick up along the side edge, these sts will be worked first in the following row |  | = on WS row work 3 sts tog |
|  | = New sts to pick up along the side edge in order to work another Domino | | |

All rights reserved. No part may be reproduced in any form without written permission from the publisher. This includes the reproduction, translation and microfilming as well as storing and processing in electronic systems. It is also not permitted to scan, save to PC or CD, to change or manipulate images.



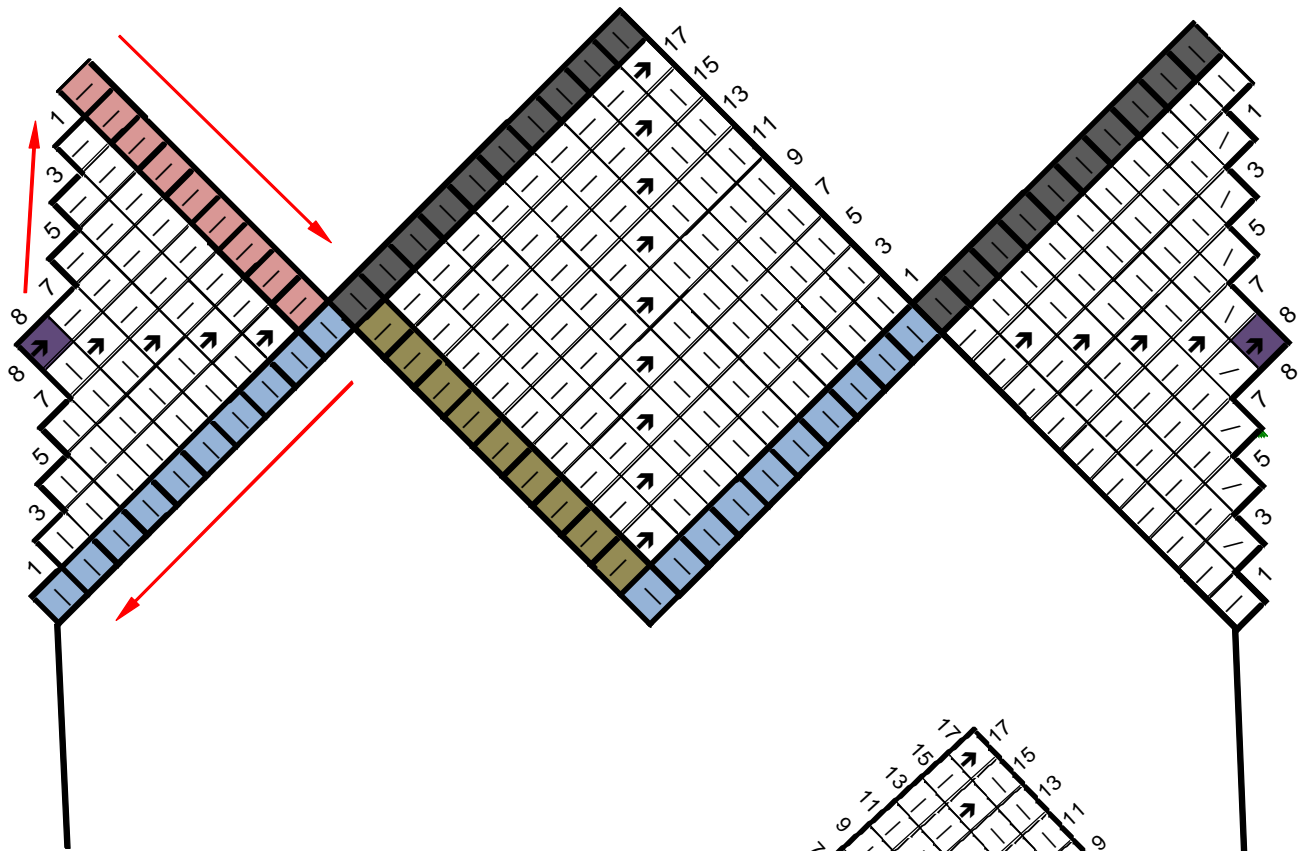
Second and all following Dominos (= 15 Dominos):

Turn. At the left side pick up 10 sts along the edge of the Side Domino. These sts remain on the needle and will be worked first in the following row. Work the 10 sts of the previous row and pick up 9 sts. Turn. Work a 19-st Domino following the Chart. Repeat 14 times.



End with a Side Domino. Cont following the red Arrow for the direction of the work. Go to the 2nd Domino Row.

All rights reserved. No part may be reproduced in any form without written permission from the publisher. This includes the reproduction, translation and microfilming as well as storing and processing in electronic systems. It is also not permitted to scan, save to PC or CD, to change or manipulate images.

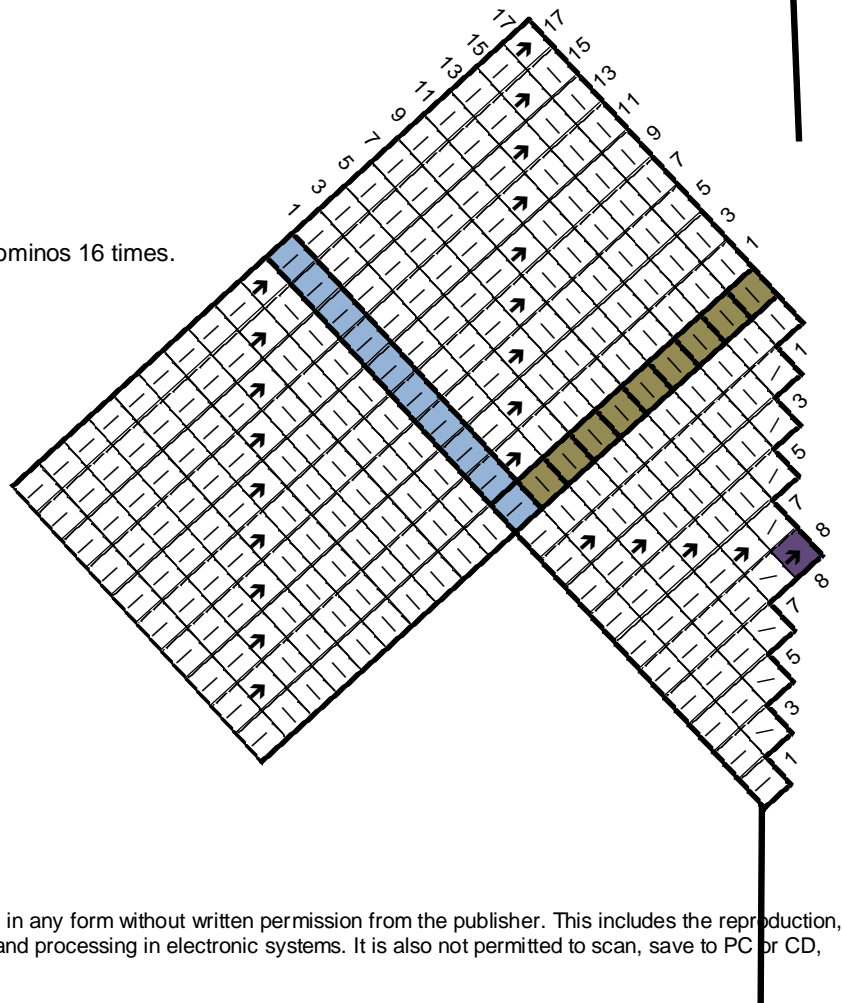


2nd Domino Row (19-st Domino)

Change to color Camel.

Work following the Chart working 19-st Dominos 16 times.

Turn.



All rights reserved. No part may be reproduced in any form without written permission from the publisher. This includes the reproduction, translation and microfilming as well as storing and processing in electronic systems. It is also not permitted to scan, save to PC or CD, to change or manipulate images.

3rd Domino Row (19-st Domino):

Change to color Braun.

Begin with 1 Side Triangle, work 19-st Domino 15 times, end with 1 Side Triangle.

Go back to the top. Turn.

4th Domino Row (19-st Domino):

Work 19-st Domino 16 times. Turn.

5th Domino Row (21-st Domino):

Cont with with the 21-st Domino (to achieve the necessary width) and divide for the Front, Back and Sleeves as foll:

Begin with 1 Side Triangle, work over 10 sts of the previous row and cast on 11 sts. Over these 21 sts work the first Side Triangle. For the following Domino, pick up 11 sts along side edge, and work the following 10 sts on the needle. Turn.

Work a Domino over these 21 sts = First Half of Front.

With a new circular needle, work the following 4 Dominos for the first Sleeve (keep sts on hold).

With the first circular needle work the following 4 Dominos for the Back.

With the 3rd circular needle work the following 4 Dominos for the 2nd Sleeve (keep sts on hold).

With the first needle work one Domino and one 21-st Side Triangle (pick up 11 sts along the side edge and cast on 10 sts) for the 2nd half of Front. Go back to the top triangle and turn.

6th Domino Row (23-st Domino):

Cont with the 23-st Domino (pick up 12 sts and work over 11 sts = 23 sts).

Work on the Front and Back sts only, keeping Sleeve sts on hold. Work 23-st Dominos 8 times. Turn.

7th Domino Row (25-st Domino):

Cont with the 25-st Domino (pick up 13 sts and work over 12 sts = 25 sts).

Begin with 1 Side Triangle, work 25-st Domino 7 times. End with one Side Triangle. Go back to the top. Turn.

8th Domino Row (27-st Domino):

Cont with 27-st Domino (pick up 14 sts and work over 13 sts = 27 sts).

Work 27-st Domino 8 times. Turn.

9th Domino Row (29-st Domino):

Cont with 29-st Domino (pick up 15 sts and work over 14 sts = 29 sts).

Begin with 1 Side Triangle, work 29-st Domino 7 times. End with one Side Triangle. Go back to the top. Turn.

10th Domino Row (31-st Domino):

Cont with 31-st Domino (pick up 16 sts and work over 15 sts = 31 sts).

Work 31-st Domino 8 times. Turn.

11th Domino Row (33-st Domino):

Cont with 33-st Domino (pick up 17 sts and work over 16 sts = 33 sts).

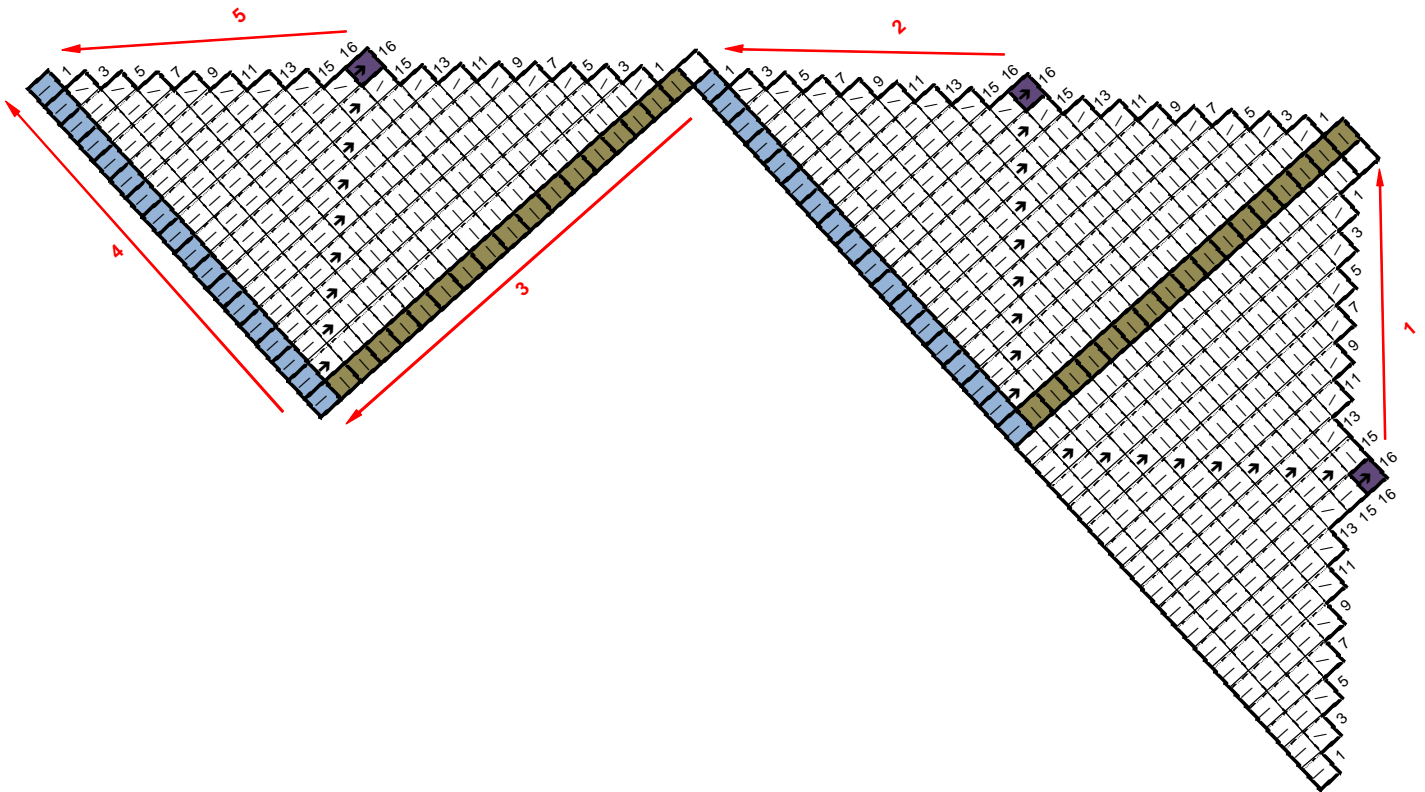
Begin with 1 Side Triangle, work 33-st Domino 7 times. End with 1 Side Triangle. Go back to the top. Turn.

12th Domino Row (35-st Domino):

Change to color Camel.

Cont with 35-st Domino (pick up 18 sts and work over 17 sts = 35 sts).

Work first side triangle following the Chart. End in the center of the lower triangle edge. Along the side of the triangle, pick up 12 sts to the top = 13 sts; leave sts on needle (Arrow 2). Work 7 more side triangles (Arrows 3 to 5 = direction of work). Turn.



Lower Edge Band:

With circular needle, working along edge Dominos of Front and Back, as foll: *work over 13 sts, pick up 12; rep from * 7 times more (25 sts per Domino = 200 sts). Turn. Work 4 rows garter st in Camel, 6 rows garter st in Braun. Bind off sts loosely

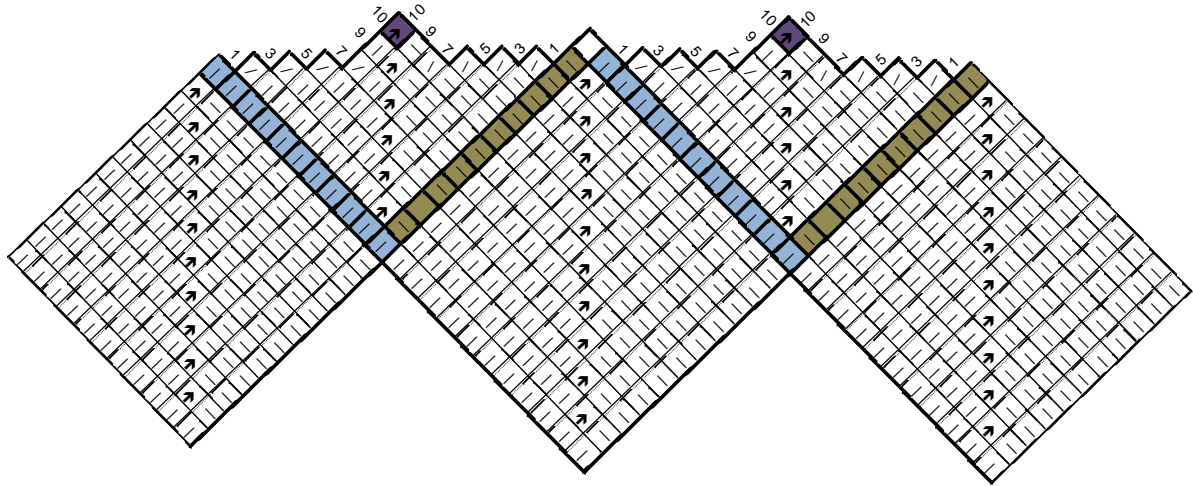
All rights reserved. No part may be reproduced in any form without written permission from the publisher. This includes the reproduction, translation and microfilming as well as storing and processing in electronic systems. It is also not permitted to scan, save to PC or CD, to change or manipulate images.

Sleeve:

Cont to work in rounds after dividing for fronts and back on the 6th Domino Row as foll:

Work 9 rounds of four 21-st Dominos and work the 10th round of four 21-st side triangles following the Chart.

Tip: Work Dominos with two dpn, leaving sts on hold on circular needle.



Along lower edge of the edge Dominos, with dpn pick up 68 sts as foll: *work over 9 sts, pick up 8 sts; rep from * 3 times more (17 sts per Domino).

Work as foll: *K 1 round, P 1 round; rep from * in following stripes: 4 rounds Camel and 6 rounds Braun. Bind off.

Work 2nd sleeve to correspond.

Finishing

Crochet band on Left and Right Front

Rows 1 - 6: *1 sc, ch 1; rep from *.

Row 7: Work backwards sc (from left to right).

With a **steam iron** dampen the edges **gently** into shape.

Sew 6 leather closures with Braun to Fronts.