



Innovative Alabama Governments Summit

AUBURN

MONTGOMERY

2009

Innovative Alabama Governments Awards

2009

Innovative Alabama
Governments Awards

Government Program Innovation

Overall Winner

Doc in a Bus

Dallas County Emergency Management Agency and
Medical Reserve Corps



Overall Winner

Doc in a Bus

The Challenge

- Currently there are about 5,000 uninsured people in Dallas County, or about 18% of the population
- This portion of the population does not seek medical care
- The Doc in a Bus concept was devised to provide continuity of care for the uninsured with little administrative and overhead costs



Overall Winner

Doc in a Bus

The Innovative Solution

- Doc in a Bus was created to attend to the daily needs of the uninsured citizens of Dallas county
- To function as a mobile triage unit, should a large scale disaster occur within the county
- Services are provided two times monthly, from a state of the art clinic within a 33 foot recreational trailer, with three exam rooms and a laboratory area



Examining Room – Doc in a Bus

Overall Winner

Doc in a Bus

The Results

- Over 600 clinic visits with 300 individual patients
- Clinics provide triage, laboratory, pastoral care, clinic visits, prescription assistance and diet counseling
- Patients receive up to three prescriptions per visit
- The lab provides basic chemistry, blood count, thyroid testing and liver function tests and is staffed by community health workers and the UAB Selma Medical Facility



The Mobile Laboratory for the Doc in a Bus

Overall Winner

KidCheck

Governor's Alabama Rural Action Commission



Overall Winner

KidCheck

The Challenge

- Ensuring quality health care to the children of rural Alabama is a challenge. With the economic downturn, even more families lack insurance and health coverage.
- Though school systems provided health fairs, students did not get the follow up care they needed.



Overall Winner

KidCheck

The Innovative Solution

- The KidCheck screening process enables children without insurance and not eligible for ALL Kids or Medicaid , to be covered for free under the Blue Cross/Blue Shield Alabama child Caring program for at least one year.
- Any school system within the state can implement KidCheck – by doing so they partner with a two or four year nursing school and nursing students provide the screenings



KidCheck Examination in School

Overall Winner

KidCheck

The Results

- In the 2008-2009 school year 23 school systems and 13 nursing schools participated in KidCheck
- There were 17,000 students screened during that period
- There were 2263 dental referrals, 1,955 vision referrals, and 2,588 other types of referrals
- In 2009-2010 over 35 school systems are participating with 35,000 expected screenings



Blood pressure screenings are part of KidCheck

Honorable Mention Designee

Regional Workforce Development Councils / Workforce Planning Council

Governor's Office of Workforce Development

- Regional councils are made up of economic developers, business and industry professionals and elected officials and are responsible for assessing local workforce needs.
- In 2007 -08 , 101 local projects were funded with an approximate budget of \$15 million dollars. In 2008-09 69 projects were funded with a budget of approximately \$10 million dollars.

Honorable Mention Designee

Inmate Population Control – Court Liaison Position Calhoun County

- The Court Liaison Officer position was created to help offset the yearly increase in cost of confinement for inmates with serious medical/dental problems. The Officer works with the jail nurse, physicians, judges, district attorney, and the inmate attorney to expedite the inmate through the system
- Since the inception of the program, Calhoun County has saved over \$200,000 in tax payer dollars.

Honorable Mention Designee

NPDES Permit Branch

Alabama Department of Environmental Management

- The program targeted process waste reduction, process leveling and the removal of overburden in order to create the cleanest and most efficient process they could achieve.
- Once fully implemented, the team was able to reduce the Mining permit backlog from 16% of the entire permitted universe to 2% in 4 months. Similarly the SID permit backlog was reduced from 12% of the entire permitted universe to 0% in 3 months.

2009

Innovative Alabama
Governments Awards

Digital Government Innovation

Overall Winner

Voice Over IP Integration

County of Mobile



Overall Winner

Voice over IP Integration

The Challenge

- Outdated and inefficient computer data network and telephone system
- Lack of performance, functionality, and citizen access
- High cost for maintenance and problem resolution



Overall Winner

Voice over IP Integration

The Innovative Solution

- The project leveraged innovative Voice over Internet Protocol (VoIP) technology that combined data network and telephone systems into a seamless communications system.
- The project reengineered fiber optics and Ethernet switching technology.
- The project converted IP routing to non-public IP addresses to enhance network security.



Overall Winner

Voice over IP Integration

The Results

- Significant reduction in monthly costs
- Significant increase in bandwidth availability
- Significant decrease in bandwidth cost

- Greater internal manageability
- Enhanced scalability
- Standardization of equipment
- Enhanced disaster recovery capability



Overall Winner

Risk Analysis Mapping Tool

Alabama Emergency Management
Agency

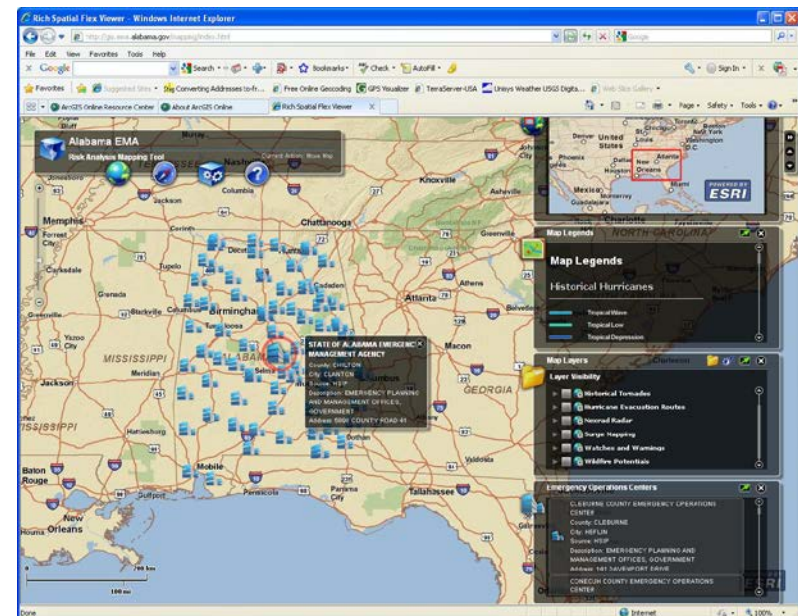


Overall Winner

Risk Analysis Mapping Tool

The Challenge

- Public awareness of environmental hazards
- No applications that emphasized Alabama data and hazards to the public
- Enhance public recognition of environmental hazards
- Public awareness of disaster recovery facilities



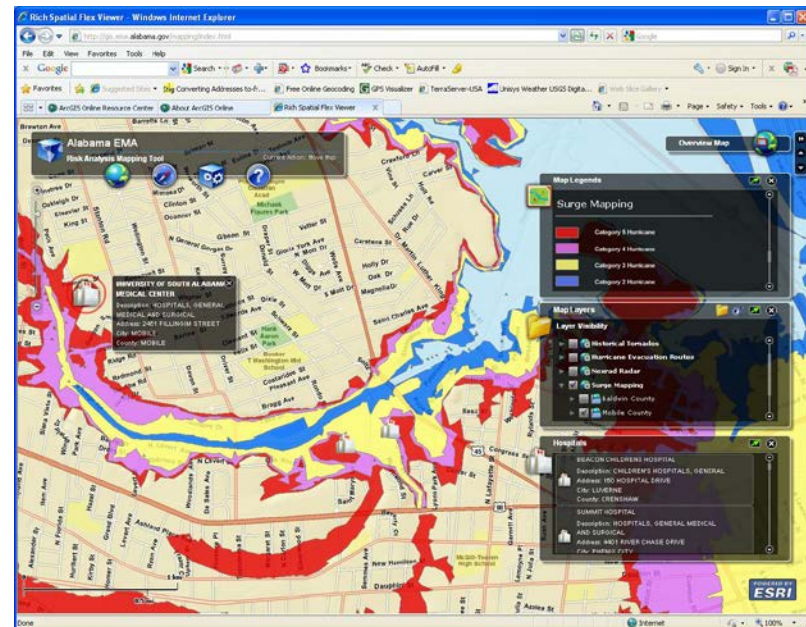
Emergency Operations Centers

Overall Winner

Risk Analysis Mapping Tool

The Innovative Solution

- Integration of multiple skill sets
- Integration of multiple technologies to create the mapping tool
- Integration of multiple data sources and layers
- Integration of open-source software solutions



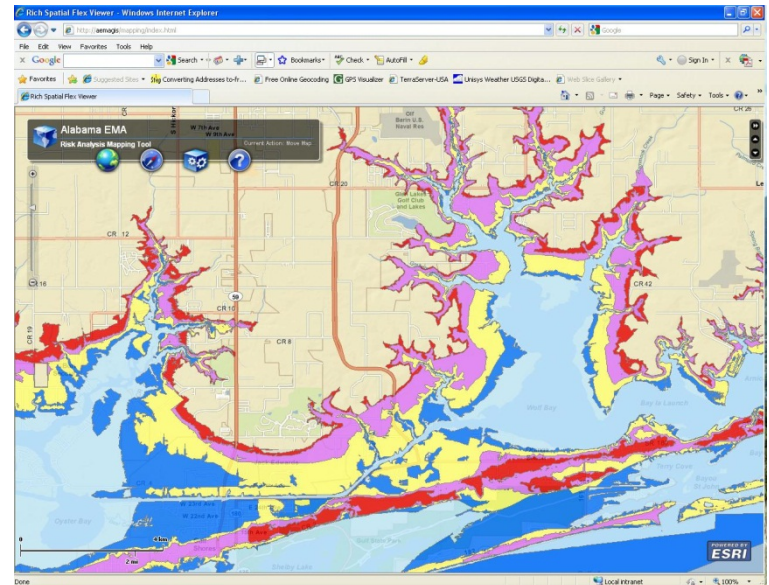
Storm Surge and Hospitals

Overall Winner

Risk Analysis Mapping Tool

The Results

- Citizens have visual display of environmental hazard data online
- Ability to search by address or coordinates
- Display of disaster recovery facilities
- Compliments AEMA hazards information available through the website at <http://ema.alabama.gov>



Coastal Storm Surge