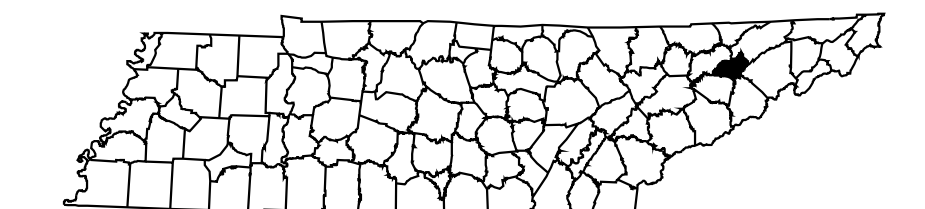
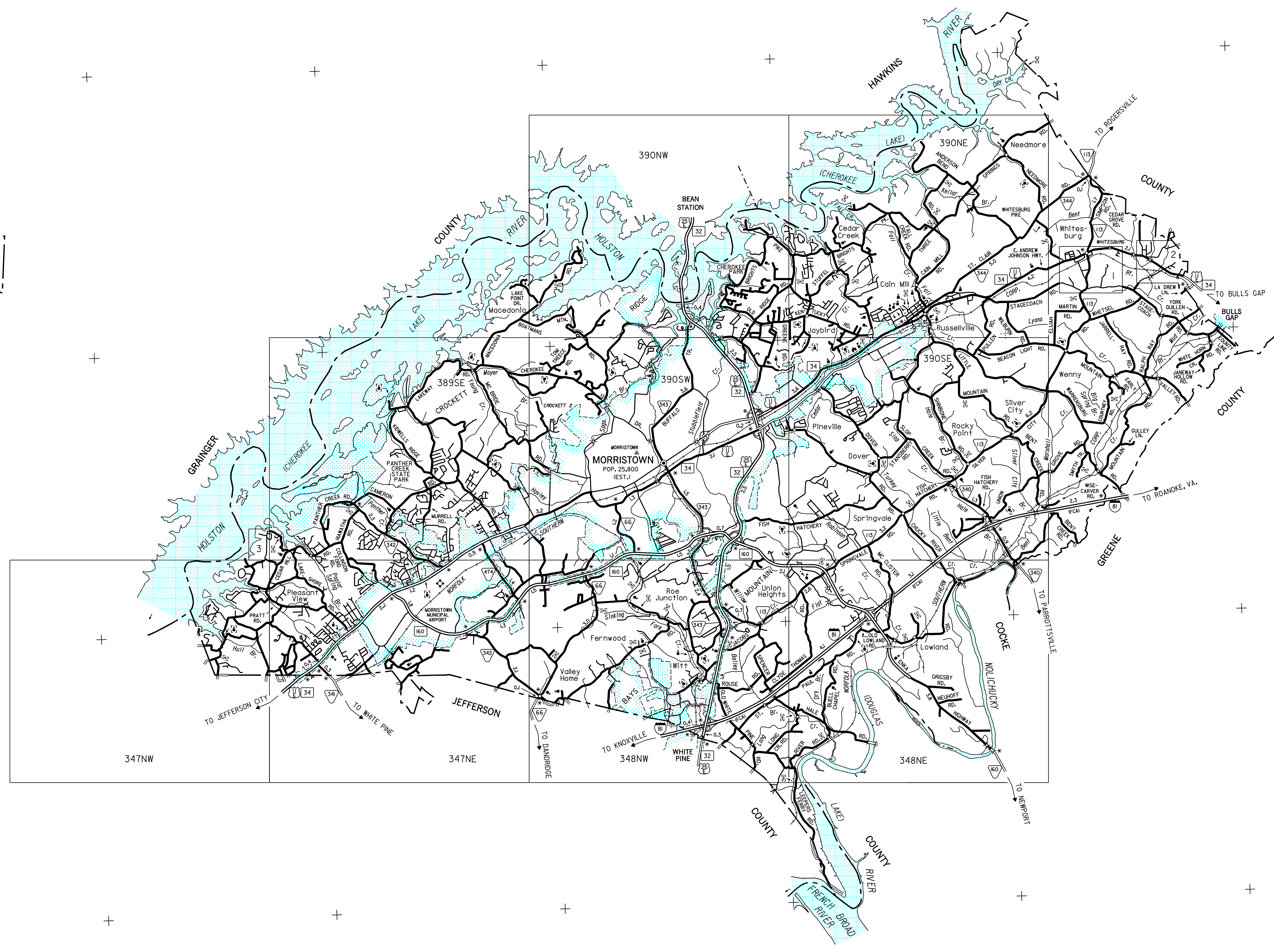


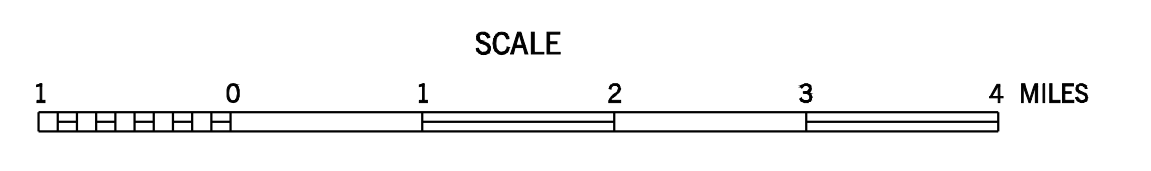
LEGEND

- SCHOOL
- CHURCH WITH CEMETERY
- CEMETERY
- HOSPITAL
- POST OFFICE
- CITY HALL OR COMMUNITY CENTER
- MONUMENT
- AIRPORT, COMPLETE FACILITIES
- AIRPORT, LIMITED FACILITIES
- LANDING AREA OR STRIP
- HIGHWAY GARAGE (S-STATE, C-COUNTY)
- TRIANGULATION STATION
- OBSERVATION OR LOOKOUT TOWER
- COUNTY SEAT
- OTHER CITIES AND VILLAGES
- RADIO OR TELEVISION STATION
- POINT OF INTEREST
- DOT TO INDICATE LOCATION OF ANY CULTURAL FEATURE OUT OF PLACE
- INTERSTATE HIGHWAY
- U.S. NUMBERED HIGHWAY
- STATE HIGHWAY
- STATE HIGHWAY
- PROMINENT PEAK WITH ELEVATION
- LAKE WITH DAM
- RESERVOIR, POND OR LAKE
- LEVEE OR DYKE
- DRAINAGE CANAL
- NARROW STREAM
- WIDE STREAM
- DAM WITH LOCK
- HEAD OF NAVIGATION
- NAVIGABLE STREAM
- GRADE CROSSING
- UNDERPASS-ROAD BELOW
- OVERHEAD-ROAD ABOVE
- RAILROAD TUNNEL
- GRADE SEPARATION
- FORD
- LOW WATER BRIDGE
- FREE FERRY OR TOLL FERRY
- HIGHWAY BRIDGE-OVER 20 FEET
- HIGHWAY BRIDGE-LONG RIVER CROSSING
- PRIMITIVE OR UNIMPROVED ROAD
- GRADED AND DRAINED, SOIL, GRAVEL OR STONE SURFACED ROAD
- PAVED ROAD
- PAVED HIGHWAY OR ROAD
- DIVIDED ROADWAY
- DISTANCE IN MILES BETWEEN DESIGNATED POINTS
- FULL CONTROL OF ACCESS
- NPS
- NATIONAL PARK SERVICE HIGHWAY
- HIGHWAY INTERCHANGE
- COUNTY LINE
- STATE LINE
- INCORPORATED CITY BOUNDARY
- RESERVATION BOUNDARY



GENERAL HIGHWAY MAP
HAMBLEN COUNTY
 TENNESSEE

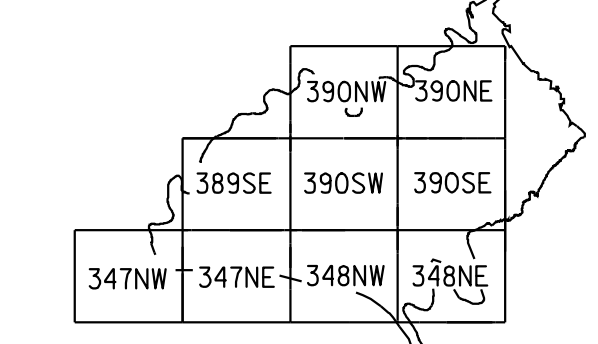
PREPARED BY THE
 TENNESSEE DEPARTMENT OF TRANSPORTATION
 LONG RANGE PLANNING DIVISION
 IN COOPERATION WITH THE
 U.S. DEPARTMENT OF TRANSPORTATION
 FEDERAL HIGHWAY ADMINISTRATION



2009

MAP RECORD	
FIELD DATA OBTAINED IN 1989	
FIELD EXAMINATION MADE IN 1996	
REVISIONS	DATE
UPDATED USING INFORMATION PROVIDED BY LOCAL OFFICIALS	2009
STATE HIGHWAY SYSTEM	2009

INDEX TO STATEWIDE PLANIMETRIC MAPS FOR HAMBLEN COUNTY



1 COUNTY MAP SHEET WITH 9 STATEWIDE PLANIMETRIC MAP SHEETS

LAMBERT CONFORMAL CONIC PROJECTION
 20,000 FOOT GRID TICKS BASED ON THE TENNESSEE COORDINATE SYSTEM 1927 NORTH AMERICAN DATUM

POPULATION OF HAMBLEN COUNTY
 58,128 (2000 CENSUS)