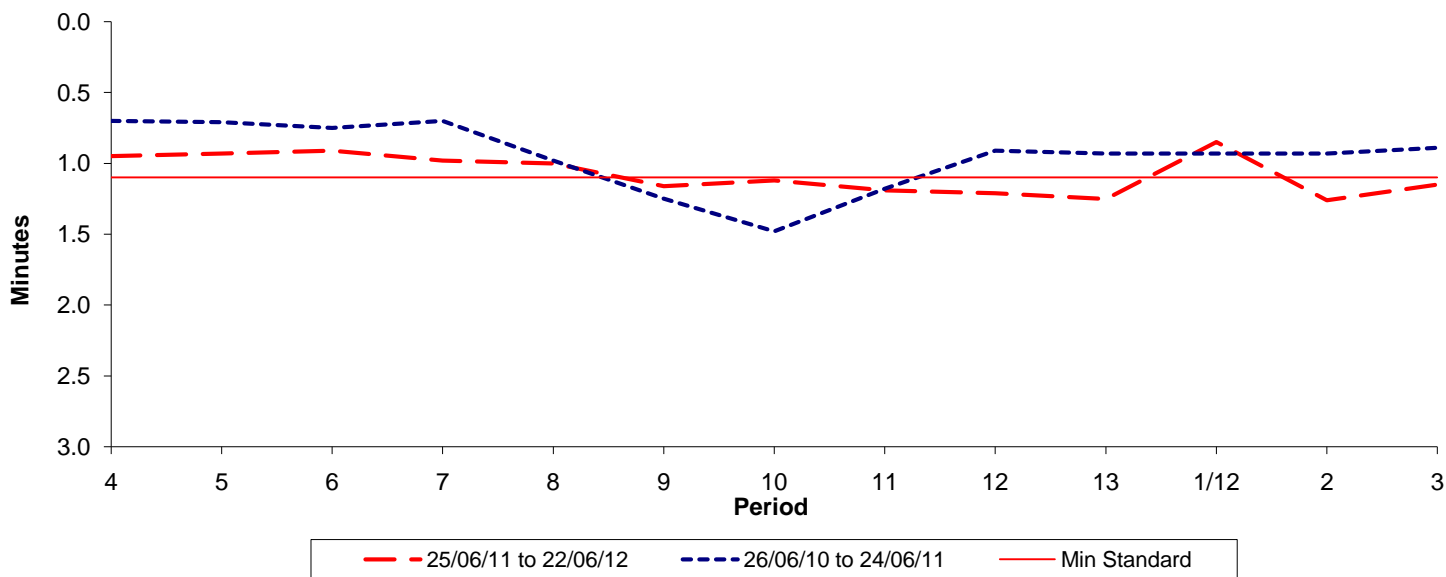




**Reliability Performance ( High Frequency )**

**Excess Waiting Time (minutes)**

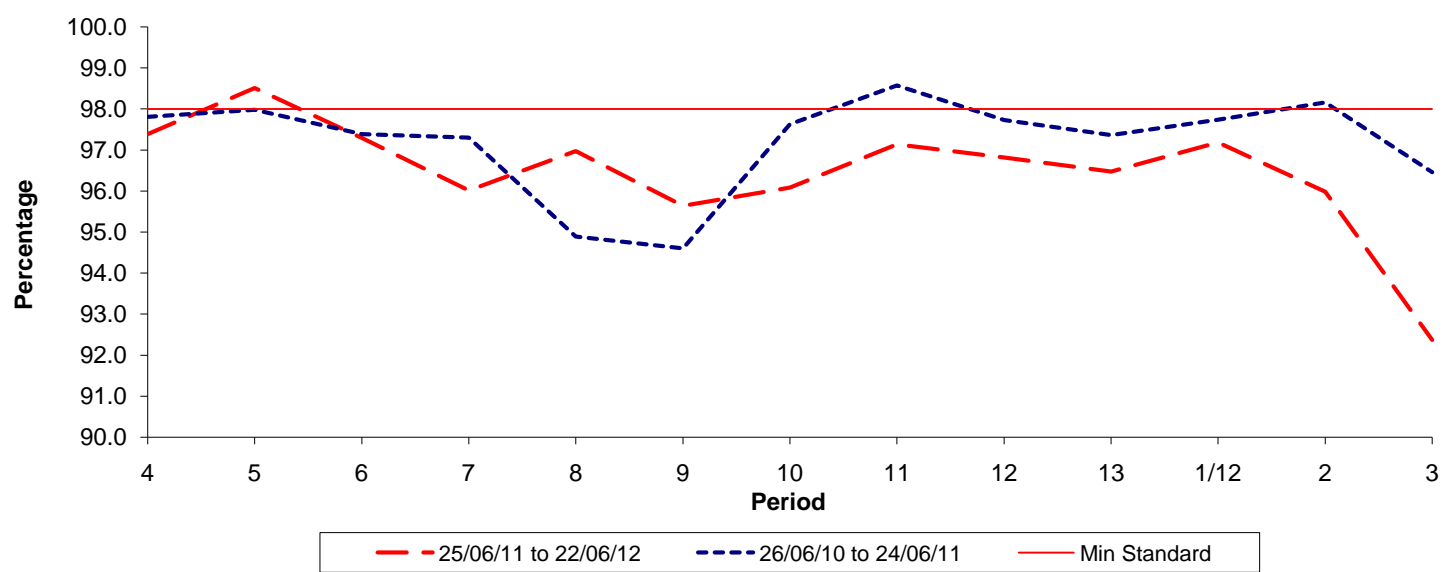


Date Range / Period	4	5	6	7	8	9	10	11	12	13	1/12	2	3
25/06/11 to 22/06/12	0.95	0.93	0.91	0.98	1.00	1.16	1.12	1.19	1.21	1.25	0.85	1.26	1.15
26/06/10 to 24/06/11	0.70	0.71	0.75	0.70	0.98	1.25	1.48	1.18	0.91	0.93	0.93	0.93	0.89
Min Standard	1.10	1.10	1.10	1.10	1.10	1.10	1.10	1.10	1.10	1.10	1.10	1.10	1.10

From P1 2012 Excess Waiting Time figures are based on the 4 weeks data. Previous results are based on 12 weeks data.

**Mileage Performance**

**% Mileage Operated**



Date Range / Period	4	5	6	7	8	9	10	11	12	13	1/12	2	3
25/06/11 to 22/06/12	97.39	98.51	97.29	96.01	96.97	95.64	96.08	97.14	96.82	96.47	97.18	95.98	92.37
26/06/10 to 24/06/11	97.81	97.98	97.39	97.30	94.89	94.60	97.63	98.57	97.73	97.36	97.74	98.16	96.46
Min Standard	98.00	98.00	98.00	98.00	98.00	98.00	98.00	98.00	98.00	98.00	98.00	98.00	98.00

Mileage figures are based on 4 weeks data