

General

Latitude: 37-51-25.7000N Elevation: 931
Longitude: 93-59-51.5000W City: EL DORADO SPRINGS

Runways

04/22: 50 ft x 3295 ft (ASPH) 18/36: 50 ft x 2430 ft (TURF)
Lighting: MED Lighting: --
VGSI: Right Traffic: N/N VGSI: Right Traffic: N/N

Communications

Unicom: 122.8 CTAF: 122.8
Lights: 122.8 Weather: HIWAS 115.9

Contacts

<http://eldomo.org>

Manager: JERRY SHILT
3665 E. 320 RD.

EL DORADO SPRINGS, MO 64744

Phone: 417-876-4370 Email:

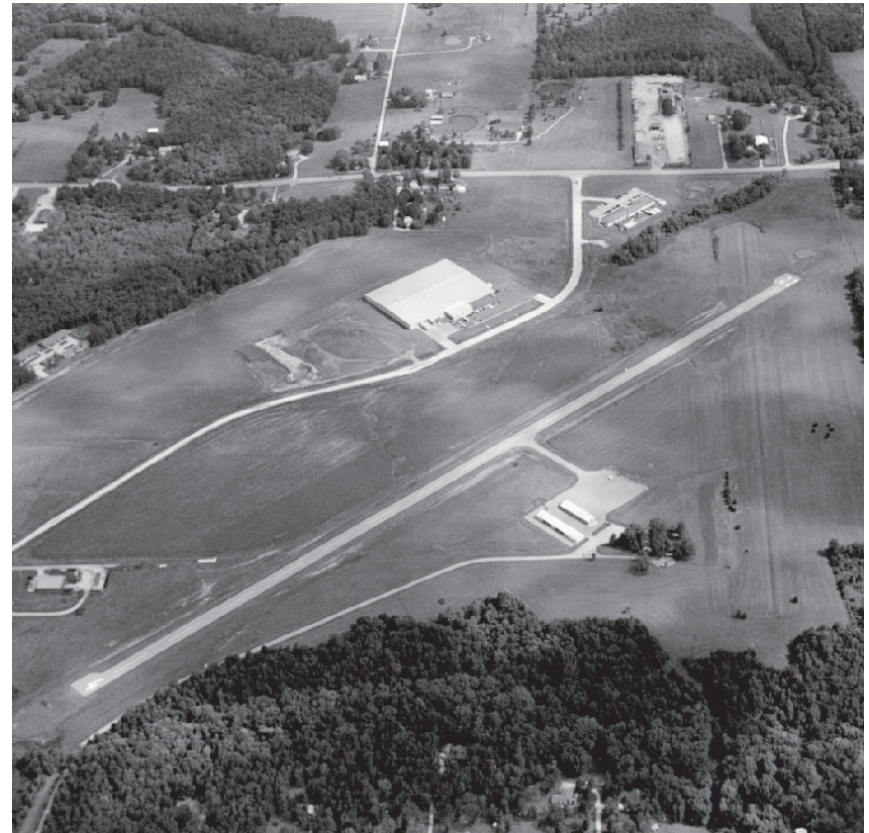
Services

Attendance: M: ALL D: ALL H: ALL

Fuel:
Repairs: Airframe: Power Plant:
Storage:
Overnight Hangar: No
Ground Transportation: Car Rental from Nearby City: Y, Courtesy Car: N
Vending Machines: N

Remarks

WILDLIFE ON & INVOF ARPT. INSUF RWY SAFETY AREA LENGTH BYND EACH END OF RWY 18/36. TREES WITHIN RWY SAFETY AREA AT EACH END OF RWY 18/36.

**FBOs****Notes:**