

Teddy Bear Sweater Knit in the Round

(Pattern for a 13", 11" and 9" Teddy Bears)

By Jean Güneysu (2006)

Materials: Worsted weight yarn in ecru (A) and blue (B), needles to give gauge (try size 4 DP needles), stitch holder. **Gauge:** 20 st = 4" in st st

Garment is knit in the round using DP needles. Instructions are for (13" Bear / 11" Bear / 9" Bear)

Body

- ✦ Using A, cast on (50 / 44 / 34) sts
- ✦ Rib (4 / 3 / 2) rows
- ✦ Inc (13 / 7 / 5) sts evenly spaced [(63 / 51 / 39) sts]
- ✦ St st to desired length to underarm (about 2" / 1½" / 1")
- ✦ Cast off (10 / 8 / 6) sts, k (21 / 17 / 13) sts, cast off (10 / 8 / 6) sts, k (22 / 18 / 14) sts
- ✦ Move sts to stitch holder

Sleeves (make 2)

- ✦ Using A, cast on (24 / 20 / 18) sts
- ✦ Rib (3 / 2 / 2) rows
- ✦ St st to desired length to underarm (about 2½" / 2" / 1¼")
- ✦ Bind off, (put first sleeve on holder)

Put all stitches (evenly divided) on DP needles as follows:

- ✓ Stitches from sleeve 1
- ✓ Stitches from front of sweater body
- ✓ Stitches from sleeve 2
- ✓ Stitches from back of sweater body



Size "small" also works for Beanie Babies®!



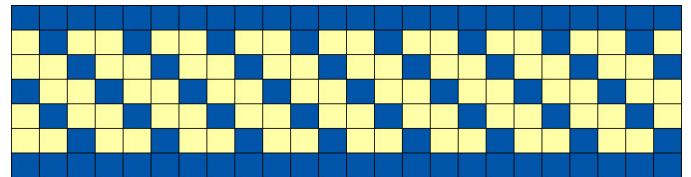
Work one round in A, then begin pattern following graph.

When sweater is about ½" short of the neck, with A, begin decreases as follows:

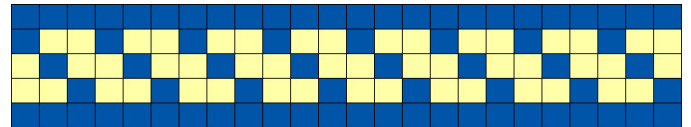
- ✦ (K2tog, k1) around
- ✦ (K1, k2tog) around
- ✦ Rib (3 / 2 / 2) rows
- ✦ Bind off

Finishing: Sew underarm seams.

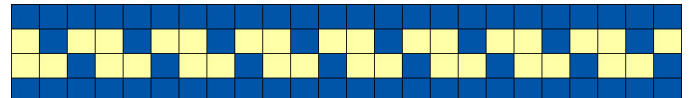
For 13" Bear:



For 11" Bear:



For 9" Bear:



Teddy Bear Skirt

Knit in the Round

(Pattern for a 13", 11" and 9" Teddy Bears)
By Jean Güneysu (2006)

Materials: Worsted weight yarn in ecru (A) and blue (B), needles to give gauge (try size 4 DP needles, stitch holder. **Gauge:** 20 st = 4" in st st

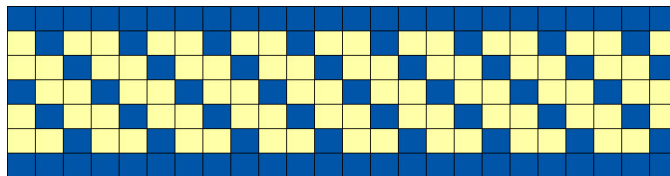
Garment is knit in the round using DP needles.
Instructions are for (13" Bear / 11" Bear / 9" Bear)

Pattern: Use whatever pattern or length you wish for the skirt. The pictures show three versions.

Starting at hem of skirt:

- Using A, cast on (72 / 64 / 48) sts
- P (3 / 2 / 2) rows
- K remaining rows until desired skirt length to waist, about (2½" / 2" / 1½")
- (K2tog) across (36 / 32 / 24) sts
- Rib (4 / 3 / 3) rows
- Bind off

Size "large" can be used for Michael's brown bear...



Size "large" can be used for Michael's 10" bear..



Scraggles can wear size "large" or "medium" depending on how tightly you knit!

