

Patons®

KROY SOCKS



FAIR ISLE SOCKS (TO KNIT)

SIZES

To fit lady's shoe size
5/6 (7/8 - 9/10)

Finished foot length

Small (5/6) 9 ins [23 cm]
Medium (7/8) 9½ ins [24 cm]
Large (9/10) 10½ ins [26.5 cm]

MATERIALS

Patons® Kroy Socks

(50 g/1.75 oz; 152 m/166 yds)

SIZES Small (Medium-Large)

Main Color (MC)

(55040 Coal) **2 (2-2) balls**

Contrast A

(55607 Mexicala Stripes)

2 (2-2) balls

Set of four size 3.25 mm (U.S. 3) double-pointed knitting needles **or** size needed to obtain tension.

TENSION

28 sts and 36 rows = 4 ins [10 cm].

INSTRUCTIONS

The instructions are written for smallest size. If changes are necessary for larger sizes the instructions will be written thus (). Numbers for each size are shown in the same color throughout the pattern. When only one number is given in black, it applies to all sizes.

Note: When working with more than 2 colors in one rnd, carry yarn not in use loosely across WS of work, but never over more than 5 sts. When it must pass over more than 5 sts, weave it over and under color in use at center point of sts it passes over.

With MC, cast on 64 sts loosely. Divide into (22, 22, 20) sts on 3 needles. Join in rnd. Place marker on first st for beg of rnd.

Work 8 rnds in (K2. P2) ribbing.

Next rnd: With A, knit.

Next rnd: (fold line). With A, purl.

Next rnd: With MC, knit, inc 4 sts evenly around. 68 sts. Sts are now divided as (24, 24, 20) sts on 3 needles.

1st and 2nd rnds: *With MC, K2. With A, K2. Rep from * around.

3rd and 4th rnds: *With A, K2. With MC, K2. Rep from * around.

5th and 6th rnds: As 1st and 2nd rnds.

7th rnd: With MC, knit.

8th rnd: With A, knit.

9th rnd: With A, purl.

10th rnd: With MC, knit.

Work Chart to end of chart, reading rnd from **right** to left.

Rep rows 1 to 16 of chart for pat until 4 reps of chart are complete (64 rows).

MAKE HEEL

Cont in chart pat, knit first 3 sts of 1st needle onto 3rd needle. Slip last 8 sts of 2nd needle onto beg of 3rd needle. 31 heel sts on 3rd needle.

Divide rem 37 sts onto 2 needles and leave for instep.

Working back and forth across 3rd needle in rows and beg with a purl row, cont in Chart pat across 31 heel sts for 15 rows, reading chart from **left** to right on **WS** rows.

Next row: (RS). With MC, knit, dec 2 sts evenly across. 29 sts.

SHAPE HEEL

1st row: Sl1P. P15. P2tog. P1. **Turn.**

2nd row: Sl1P. K4. Sl1. K1. pss0. K1. **Turn.**

3rd row: Sl1P. P5. P2tog. P1. **Turn.**

4th row: Sl1P. K6. Sl1. K1. pss0. K1. **Turn.**

5th row: Sl1P. P7. P2tog. P1. **Turn.**

6th row: Sl1P. K8. Sl1. K1. pss0. K1. **Turn.**

7th row: Sl1P. P9. P2tog. P1. **Turn.**

8th row: Sl1P. K10. Sl1. K1. pss0. K1. **Turn.**

9th row: Sl1P. P11. P2tog. P1. **Turn.**

10th row: Sl1P. K12. Sl1. K1. pss0. K1. **Turn.**

11th row: Sl1P. P13. P2tog. P1. **Turn.**

12th row: Sl1P. K14. Sl1. K1. pss0. K1. 17 sts.

SHAPE INSTEP

With RS of work facing, MC and 1st needle, pick up and knit 16 sts along left side of heel. With 2nd needle, work Chart pat across 37 instep sts. With 3rd needle and MC, pick up and knit 16 sts along other side of heel. Knit first 8 sts from heel onto end of 3rd needle. 86 sts are now divided as: 25 sts on 1st needle, 37 sts on 2nd needle and 24 sts on 3rd needle. **Turn.**



ABBREVIATIONS: www.patonsyarns.com/glossary

Note: Work rem of instep shaping back and forth across needles in rows as follows, dropping A when not in use:

1st row: (WS). **3rd needle:** With MC, cast on 1 st. Purl to end of needle. **2nd needle:** Work Chart across. **1st needle:** With MC, purl. 87 sts are now divided as: 25 sts on 1st needle, 37 sts on 2nd needle and 25 sts on 3rd needle.

2nd row: 1st needle: With MC, knit to last 4 sts. K2tog. K2. **2nd needle:** Work Chart across. **3rd needle:** With MC, K2. Sl1. K1. pss0. Knit to end of needle.

3rd row: 3rd needle: With MC, purl. **2nd needle:** Work Chart across. **1st needle:** With MC, purl. Rep last 2 rows until there are 69 sts divided as: 16 sts on 1st needle, 37 sts on 2nd needle and 16 sts on 3rd needle.

Cont even in rows, keeping sts on 2nd needle in pat, until 3 reps of Chart have been worked on 2nd needle sts (48 rows). Break A.

Next rnd: 1st needle: With MC, knit. **2nd needle:** With MC, knit. **3rd needle:** With MC, knit. Join in rnd, placing a marker on first st. Cont knitting in rnds until foot from picked up sts measures 6 (6½-7) ins [15 (16.5-18) cm].

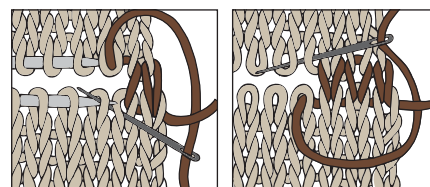
Next rnd: 1st needle: K7. K2tog. K7. **2nd needle:** K2. (K2tog. K3) 7 times. **3rd needle:** K7. K2tog. K7. 60 sts are divided as: 15 sts on 1st needle, 30 sts on 2nd needle and 15 sts on 3rd needle.

SHAPE TOE

1st rnd: 1st needle: Knit to last 3 sts. K2tog. K1. **2nd needle:** K1. Sl1. K1. pss0. Knit to last 3 sts. K2tog. K1. **3rd needle:** K1. Sl1. K1. pss0. Knit to end of needle.

2nd rnd: Knit. Rep last 2 rnds until there are 16 sts divided as 4 sts on 1st needle, 8 sts on 2nd needle and 4 sts on 3rd needle. Knit sts of 1st needle onto 3rd needle. Graft 2 sets of 8 sts tog for toe (see Diagrams). Sew instep seam.

Grafting



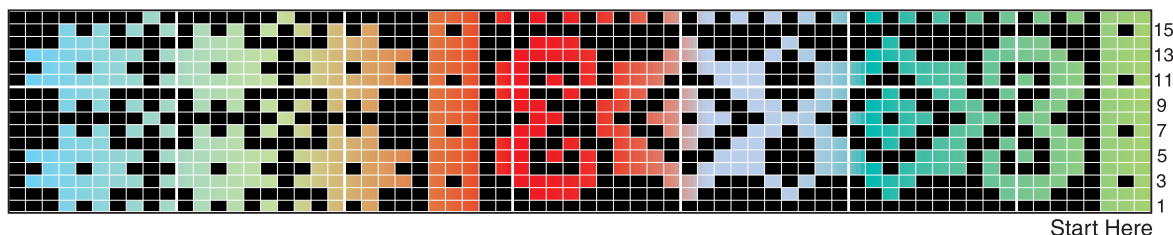
STITCH GLOSSARY

- Beg** = Beginning.
- Cont** = Continue(ity).
- Dec** = Decrease(ing).
- Inc** = Increase 1 stitch by knitting into front and back of next stitch.
- K** = Knit.
- K2tog** = Knit next 2 stitches together.
- P** = Purl.
- P2tog** = Purl next 2 stitches together.
- Pat** = Pattern.
- Pss0** = Pass slipped stitch over.
- Rem** = Remaining.
- Rep** = Repeat.
- Rnd(s)** = Round(s).
- RS** = Right side.
- Sl1** = Slip next stitch knitwise.
- Sl1P** = Slip next stitch purlwise.
- St(s)** = Stitch(es).
- Tog** = Together.
- WS** = Wrong side.

Key

- = MC
- = A

Chart



Patons

... a part of your life.

P.O. Box 40, Listowel ON N4W 3H3