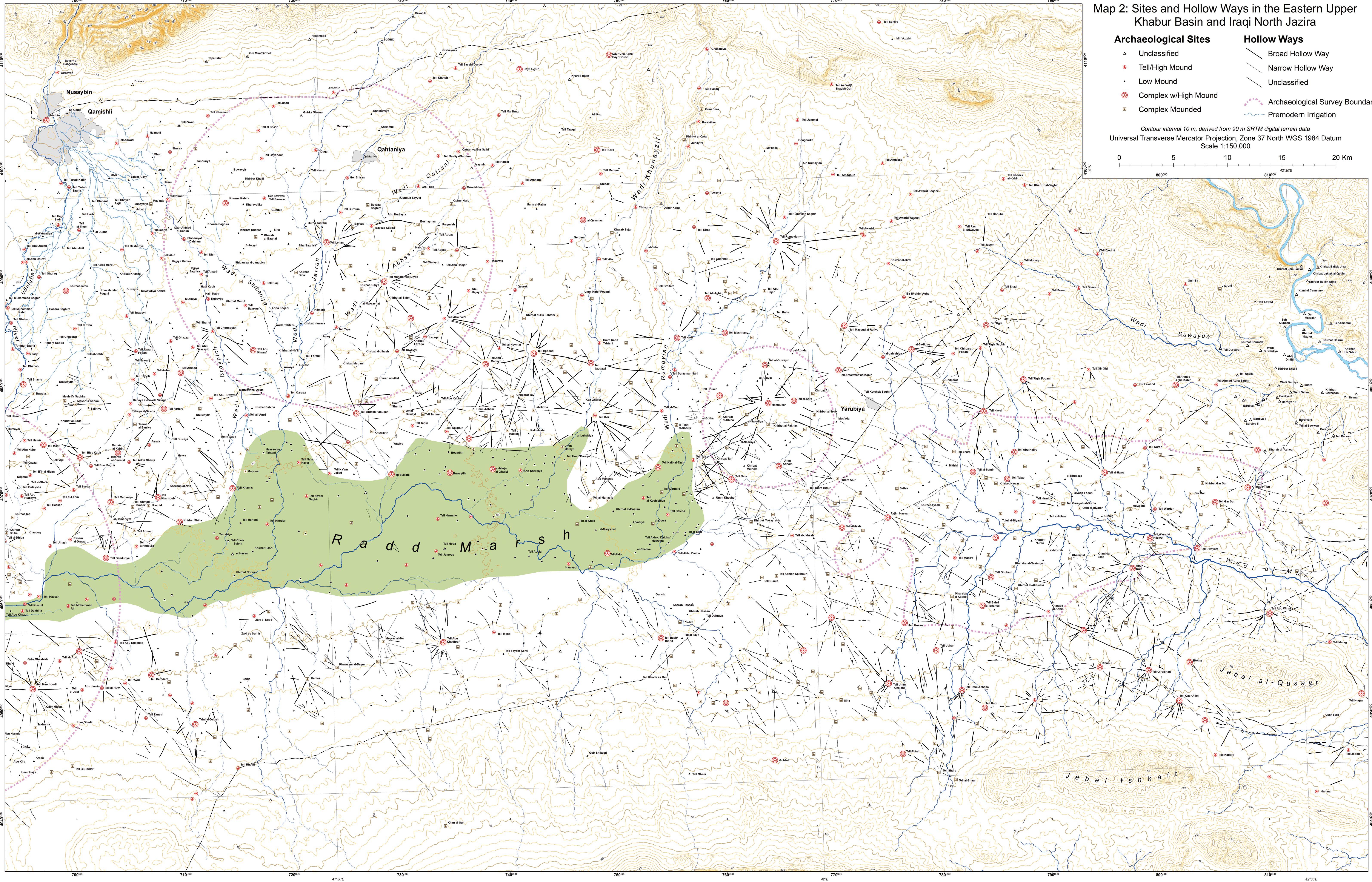


Map 2: Sites and Hollow Ways in the Eastern Upper Khabur Basin and Iraqi North Jazira



- | Archaeological Sites | Hollow Ways |
|------------------------|----------------------------------|
| △ Unclassified | — Broad Hollow Way |
| ● Tell/High Mound | — Narrow Hollow Way |
| • Low Mound | — Unclassified |
| ⊙ Complex w/High Mound | ⋯ Archaeological Survey Boundary |
| ⊠ Complex Mounded | — Premodern Irrigation |

Contour interval 10 m, derived from 90 m SRTM digital terrain data
 Universal Transverse Mercator Projection, Zone 37 North WGS 1984 Datum
 Scale 1:150,000

