

INTERACTIVE MAP

THE NEXT-GENERATION OF FUNDAMENTALS ANALYSIS

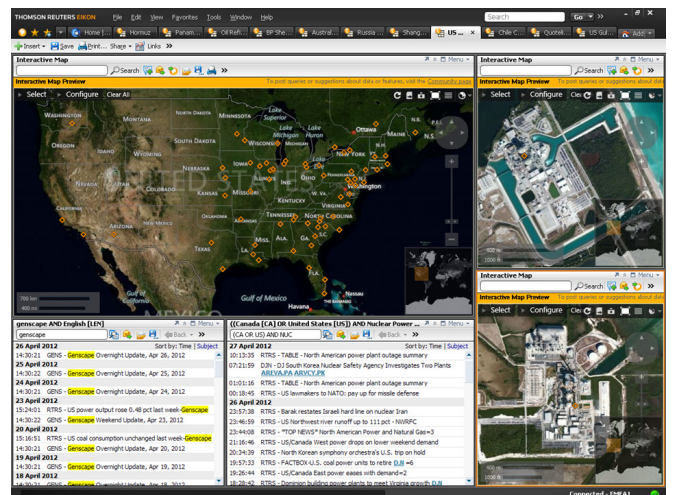
See the commodities supply chain in action, right before your eyes – from extraction, production to transportation.

Interactive Map is the most direct visual way to see the key factors that affect the supply chain and impact prices, giving you an instant understanding and unhindered insight.

View infrastructure, analyze production and output, monitor performance and track key impact factors, such as weather and freight.

Zoom in and out to see exactly what you want – in words, in figures, in situ. It's fast, it's intuitive, and customizable – so wherever you look, you'll get the picture quickly. Literally.

World view, regional view or commodity view, it's all yours. Just go there and see.



US Nuclear Power Stations



Now you can examine the factors that determine supply and demand with startling clarity and ultimately the impact on price.

A tropical storm is forming in the Atlantic and you need to know the current status and volume of output from key oil refineries in the Gulf of Mexico. You also need to track oil tankers heading into the region along with potential storm paths and estimated intensity in order to try to predict any potential shortfall in crude supplies.

There has been a major earthquake in Chile – a major of copper. Copper is in high demand, but the earthquake has shut a significant number of mines. You need to know how many mines have closed, the total capacity affected and when these mines will potentially re-open in order to re-evaluate your trading strategies and take the necessary steps to maximise future profit.

With Interactive Map you can see all this – and more.

Find everything quickly with intuitive navigation. You can cluster and filter to see in depth, either by commodity, by region or by status. Slice the view up anyway you like. You can also share information with colleagues, clients and counterparties using Thomson Reuters Messenger.

Want to delve deeper into the numbers? Click and download to Excel with dynamic updates. Now you're ready.

RIGHT FROM THE START, YOU CAN SEE:

- Oil Refineries
- Metals Plants
- Coal Mines
- US Nuclear Power Stations
- Vessel Data (satellite and shore-based)
- Active Tropical Storm Models
- Weather Layers
- Global Weather Data (satellite & radar)

GROWING VALUE

This is just the beginning. Future monthly enhancements will ensure that the Interactive Map will quickly grow to give you increasing depth of insight into everything that affects supply and demand.

Future releases will include:

- Agriculture assets and infrastructure
- Power and Gas assets and infrastructure
- Enhanced Oil assets and infrastructure
- Ability to upload your own assets and infrastructure

HOW TO ACCESS THE MAP

Interactive Map is available to all users of Thomson Reuters Eikon and Thomson Reuters Eikon for Commodities*.

Simply open a new Flex Document and select **Add Other > Interactive Map**

No dedicated internet connection is necessary. It's another reason why Thomson Reuters Eikon is more intuitive and more comprehensive than anything you have ever worked with.

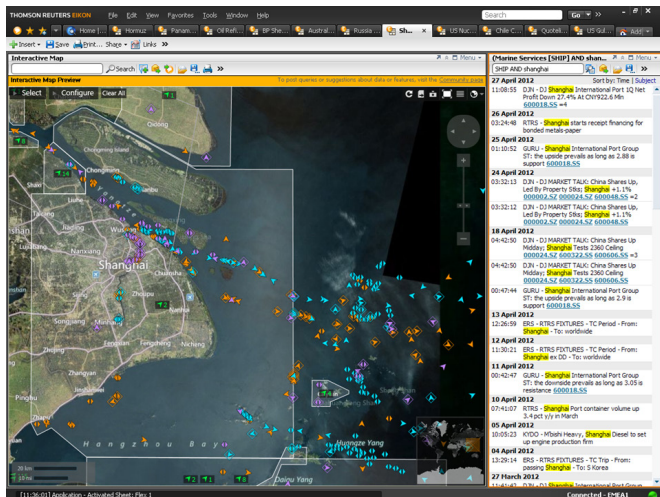
*To use the map, you will need to have .NET 4.0 installed on your machine.

FIND OUT MORE

Find out more about Interactive Map:

- Online Demo Video: training.thomsonreuters.com/video/v.php?v=456
- Interactive Map Updates: commoditiesupdates.thomsonreuters.com/lmapUpdates

Further information about the map and how to contact us with feedback, questions or comments is available on the Community page within Thomson Reuters Eikon - which can be accessed using the link at the top right of the object.



Vessel activity in Shanghai

FOR MORE INFORMATION:

Read more about our products at:
financial.thomsonreuters.com/commodities

Send us a sales enquiry at:
financial.thomsonreuters.com/sales

Find out how to contact your local office:
financial.thomsonreuters.com/locations

Access customer services at:
financial.thomsonreuters.com/customers