

Welcome to Ashfield Trails'  
Chapelbrook to West Road Trail.

This trail is the result of a  
collaboration by Ashfield Trails,  
The Trustees of Reservations, and  
the Franklin Land Trust.

Made possible by a generous grant  
from the Massachusetts Department  
of Conservation and Recreation,  
this trail is the first phase of a  
planned link between the Trustees'  
Chapel Brook Reservation and  
the DAR State Forest.

The trail is slightly less than 2 miles  
long and is of moderate difficulty.  
A round-trip hike takes between  
1.5 and 2 hours. Among the many  
historical, cultural, and environmental  
features are several old foundations,  
rock walls, ledges, and meandering  
streams crossed by plank bridges.

Portions of this trail are on private  
land, and its use is a privilege.

Please treat the land with respect  
and stay on marked trails.

The following are not permitted:  
motorized vehicles, littering, camping,  
campfires, hunting, trapping, picking  
or removing plants, wildflowers, trees,  
or other vegetation.

The building of the Ashfield Trail  
network involves a lot of effort by  
many dedicated volunteers.

Additionally, costs are involved for  
both the building and the continued  
maintenance of these trails. We must  
buy and maintain tools, purchase  
lumber for bridges, print maps, make  
signs, and provide food and drinks for  
our hard-working volunteers on trail  
work days.

Donations of any amount would be  
greatly appreciated, and can be sent  
to the address below.

Thank you for your support.



©2007

Ashfield Trails  
PO Box 194  
Ashfield, MA 01330

## Ashfield Trails

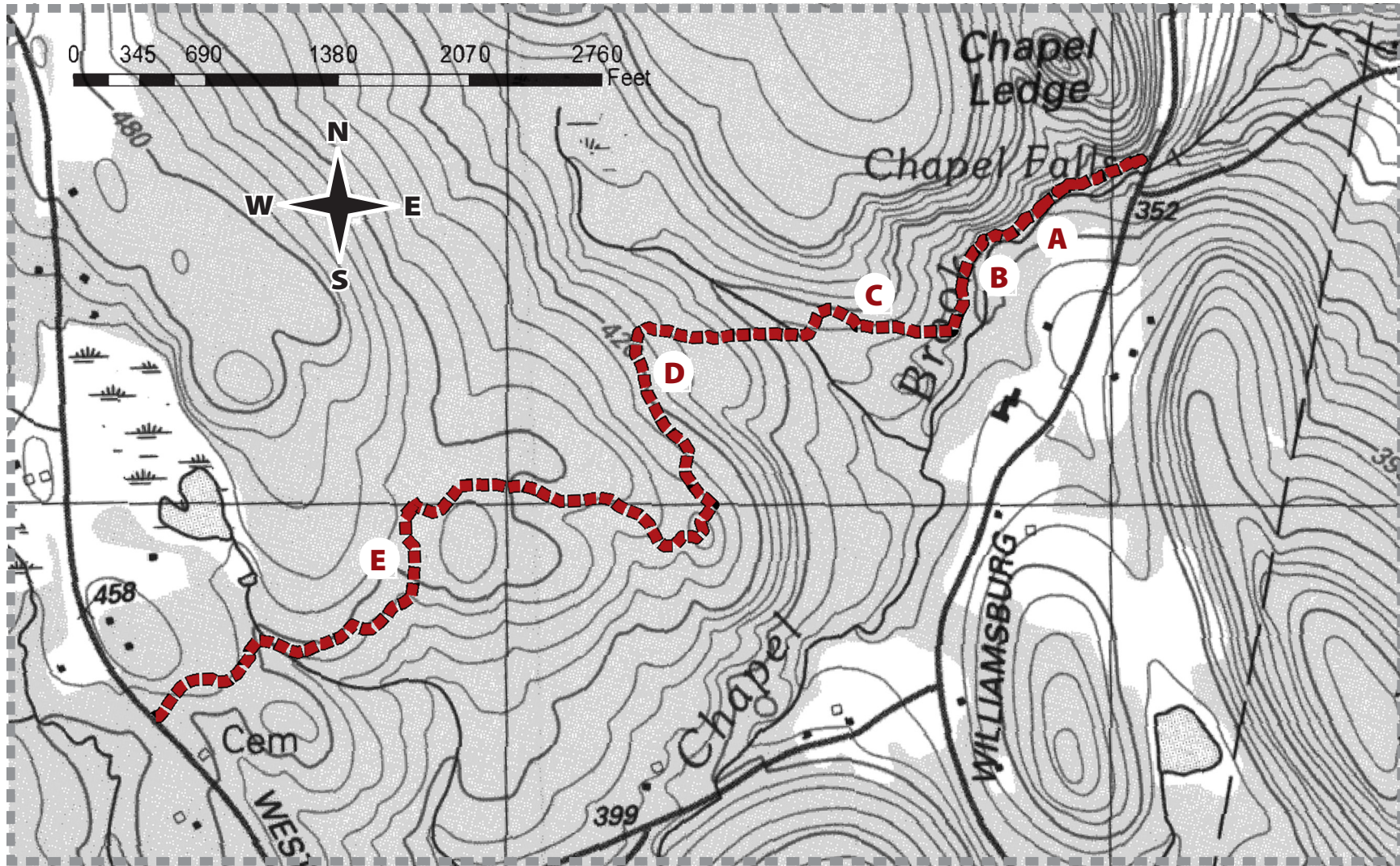


## Chapelbrook to West Road Trail

Trail map and  
points of interest

Please return this brochure to the box at the trailhead so others may use it. Thank you.

## Trail Map



### Points of Interest

- A** A rustic cedar bench provides a spot to sit and enjoy beautiful seasonal views of Chapel Ledge and Chapel Brook.
- B** Sugar Arch. Remains of the foundation of an old sugarcane house.
- C** Lichen Ledge. A huge rock ledge covered with lichen.
- D** Cellar hole of an old dwelling.
- E** Military Road. This section of the trail follows part of an old road used during the Revolutionary War, possibly by military couriers and/or to transport ammunition.