

THE WMUR GRANITE STATE POLL

THE UNIVERSITY OF NEW HAMPSHIRE SURVEY CENTER

August 14, 2012

GUBERNATORIAL RACE IN NH REMAINS WIDE OPEN

By: Andrew E. Smith, Ph.D.
Chad S. Novak, M.A.
UNH Survey Center
603/862-2226
www.unh.edu/survey-center

DURHAM, NH – The race to succeed New Hampshire Governor John Lynch in New Hampshire remains up for grabs. Most candidates remain unknown by a large majority of Granite Staters.

These findings are based on the latest **WMUR Granite State Poll**,* conducted by the University of New Hampshire Survey Center. Five hundred eighty-one (581) randomly selected New Hampshire adults were interviewed by landline and cellular telephone between August 1 and August 12, 2012. The margin of sampling error for the survey is +/- 4.1 percent. Included is a subsample of 555 likely general election voters (margin of sampling error +/- 4.2%).

NH 2012 Gubernatorial Candidates

Candidates looking to succeed Governor John Lynch remain largely unknown to New Hampshire adults. Only one candidate, Attorney Ovide Lamontagne who is seeking the Republican nomination, is known to a majority of New Hampshire adults. Currently, 29% of New Hampshire adults view Lamontagne favorably, 19% have an unfavorable view of him, 5% are neutral, and 47% don't know enough about him to say. Lamontagne's net favorability rating is +10%, up from +5% in April. Among Republicans, Lamontagne's net favorability rating is +47%, up significantly from +30% in April.

Kevin Smith, a former state representative and former Executive Director of Cornerstone Policy Research remains largely unknown, even among Republicans. In the most recent Granite State Poll, 14% of New Hampshire adults have a favorable opinion of Smith, 9% have an unfavorable opinion of him, 4% are neutral, and 73% don't know enough about him to say. Among Republicans, Smith has a net favorability rating of +18%, up from +4% in April, but 73% of Republicans continue to say they don't know enough about him to form an opinion.

On the Democratic side, two former state Senators, Maggie Hassan of Exeter and Jackie Cilley from Barrington have announced that they will seek the Democratic nomination, but both remain largely unknown to New Hampshire residents. Currently, 16% of New Hampshire adults have a favorable opinion of Hassan, 8% have an unfavorable opinion of her, 4% are neutral, and 72% don't know enough about her to say. Hassan's net favorability rating is +8%, +26% among Democrats.

Cilley has similar numbers with 15% of all adults having a favorable opinion of her, 8% have an unfavorable opinion, 3% are neutral, and 74% don't know enough about her to say. Cilley's net favorability rating is +7%, +23% among Democrats.

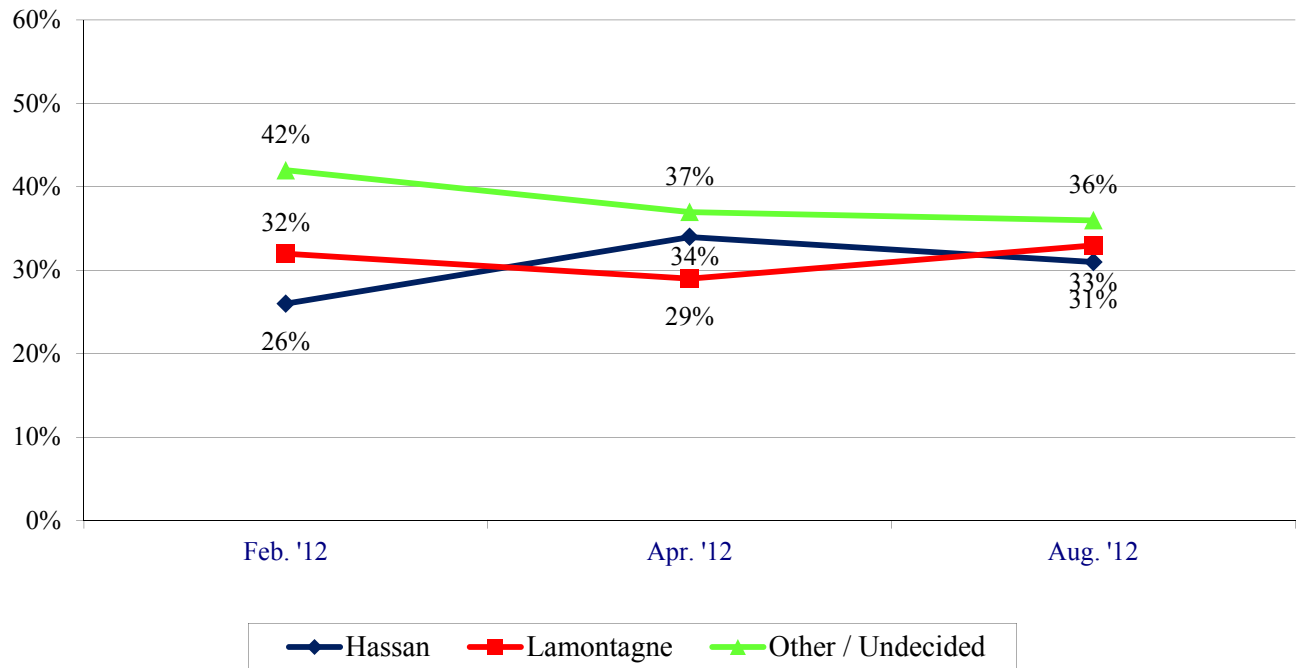
A third recently announce candidate for the Democratic nomination is businessman and retired Air Force officer Bill Kennedy. He is also unknown in the state with 8% saying they have a favorable opinion of Kennedy, 5% have an unfavorable opinion, 3% are neutral and 83% don't know enough about him to say. Kennedy's net favorability rating is +3%, +4% among Democrats.

Hypothetical matchups between the Republican candidates Lamontagne and Smith and the declared Democratic candidates Hassan, Cilley, and Kennedy also show an unengaged electorate.

In a matchup between Lamontagne and Hassan, 33% of likely general election voters say they would vote for Lamontagne, 31% prefer Hassan, 1% favor some other candidate, and 35% are undecided. The two candidates have remained close since February.

* We ask that this copyrighted information be referred to as *the Granite State Poll*, sponsored by WMUR-TV, and conducted by the University of New Hampshire Survey Center.

**November 2012 General Election - Lamontagne vs. Hassan
(Likely 2012 General Election Voters)**



In a matchup between Hassan and Smith, 31% of likely voters say they will vote for Hassan, 29% for Smith, 1% for some other candidate and 39% are undecided.

When Cilley is matched with Lamontagne and Smith, the results are similar to those seen with Hassan. In a race between Lamontagne and Cilley, 35% of likely general election voters say they would vote for Lamontagne, 31% prefer Cilley, 1% favor some other candidate, and 33% are undecided.

In a race between Smith and Cilley, 31% of likely general election voters say they would vote for Cilley, 28% prefer Smith, 1% favor some other candidate, and 39% are undecided.

And when Kennedy is matched against Lamontagne and Smith, the results are again similar to those seen with Hassan and Cilley. In a race between Lamontagne and Kennedy, 35% of likely general election voters say they would vote for Lamontagne, 29% support Kennedy, 1% prefer some other candidate, and 36% are undecided.

Finally, in a matchup between Smith and Kennedy, 29% of likely general election voters say they will vote for Smith, 27% prefer Kennedy, 1% support some other candidate, and 44% are undecided.

Granite State Poll Methodology

These findings are based on the latest WMUR Granite State Poll, conducted by the University of New Hampshire Survey Center. Five hundred eighty-one (581) randomly selected New Hampshire adults were interviewed by landline and cellular telephone between August 1 and August 12, 2012. The margin of sampling error for the survey is +/- 4.1 percent. Included is a subsample of 555 likely general election voters (margin of sampling error +/- 4.2%).

The data have been weighted to adjust for numbers of adults and telephone lines within households, respondent sex, and region of the state. In addition to potential sampling error, all surveys have other potential sources of non-sampling error including question order effects, question wording effects, and non-response.

Potential Gubernatorial Candidates

"Next, I'd like to get your overall opinion of some people who may run for Governor of New Hampshire next year. As I read each name, please say if you have a favorable or unfavorable opinion of this person - or if you don't know enough about them to say." "First, how about ...

	<u>Favorable</u>	<u>Neutral</u>	<u>Unfavorable</u>	<u>Don't Know</u>	<u>NET</u>	<u>(N=)</u>
Potential GOP Candidates						
Attorney Ovide Lamontagne – Aug. '12	29%	5%	19%	47%	+10%	(580)
Attorney Ovide Lamontagne – Apr. '12	24%	3%	19%	54%	+5%	(532)
Attorney Ovide Lamontagne – Feb. '12	25%	6%	17%	52%	+8%	(522)
Attorney Ovide Lamontagne – Oct. '11	25%	8%	20%	48%	+5%	(555)
Former State Rep Kevin Smith – Aug. '12	14%	4%	9%	73%	+5%	(580)
Former State Rep Kevin Smith – Apr. '12	6%	4%	6%	84%	+/-0%	(531)
Former State Rep Kevin Smith – Feb. '12	5%	7%	6%	82%	-1%	(525)
Former State Rep Kevin Smith – Oct. '11	3%	8%	5%	84%	-2%	(555)
Potential DEM Candidates						
Former State Sen. Maggie Hassan – Aug. '12	16%	4%	8%	72%	+8%	(580)
Former State Sen. Maggie Hassan – Apr. '12	10%	4%	4%	81%	+6%	(531)
Former State Sen. Maggie Hassan – Feb. '12	11%	6%	6%	77%	+5%	(524)
Former State Sen. Maggie Hassan – Oct. '11	8%	8%	7%	77%	+1%	(555)
Former State Sen. Jackie Cilley – Aug. '12	15%	3%	8%	74%	+7%	(580)
Former State Sen. Jackie Cilley – Apr. '12	9%	3%	5%	83%	+4%	(530)
Former State Sen. Jackie Cilley – Feb. '12	5%	7%	8%	80%	-3%	(525)
Former State Sen. Jackie Cilley – Oct. '11	7%	8%	6%	80%	+1%	(555)
Businessman Bill Kennedy – Aug. '12	8%	3%	5%	83%	+3%	(580)

Hassan v. Lamontagne

"Suppose the election for Governor of New Hampshire was being held today and the candidates were Ovide Lamontagne, the Republican and Maggie Hassan, the Democrat, who would you vote for?" [ROTATE CANDIDATES]

	<u>Feb. '12</u>	<u>Apr. '12</u>	<u>Aug. '12</u>
Maggie Hassan	26%	34%	31%
Ovide Lamontagne	32%	29%	33%
Other	1%	1%	1%
Undecided	41%	36%	35%
(N=)	(482)	(484)	(546)

Hassan v. Smith

"Suppose the election for Governor of New Hampshire was being held today and the candidates were Kevin Smith, the Republican and Maggie Hassan, the Democrat, who would you vote for?" [ROTATE CANDIDATES]

	<u>Apr. '12</u>	<u>Aug. '12</u>
Maggie Hassan	29%	31%
Kevin Smith	24%	29%
Other	1%	1%
Undecided	46%	39%
(N=)	(479)	(542)

Cilley v. Lamontagne

"Suppose the election for Governor of New Hampshire was being held today and the candidates were Ovide Lamontagne, the Republican and Jackie Cilley, the Democrat, who would you vote for?" [ROTATE CANDIDATES]

	<u>Apr. '12</u>	<u>Aug. '12</u>
Jackie Cilley	31%	31%
Ovide Lamontagne	30%	35%
Other	1%	1%
Undecided	38%	33%
(N=)	(482)	(543)

Cilley v. Smith

"Suppose the election for Governor of New Hampshire was being held today and the candidates were Kevin Smith, the Republican and Jackie Cilley, the Democrat, who would you vote for?" [ROTATE CANDIDATES]

	<u>Apr. '12</u>	<u>Aug. '12</u>
Jackie Cilley	30%	31%
Kevin Smith	23%	28%
Other	1%	1%
Undecided	47%	39%
(N=)	(481)	(540)

Kennedy v. Lamontagne

"Suppose the election for Governor of New Hampshire was being held today and the candidates were Ovide Lamontagne, the Republican and Bill Kennedy, the Democrat, who would you vote for?" [ROTATE CANDIDATES]

	<u>Apr. '12</u>	<u>Aug. '12</u>
Bill Kennedy	31%	29%
Ovide Lamontagne	30%	35%
Other	1%	1%
Undecided	38%	36%
(N=)	(482)	(540)

Kennedy v. Smith

"Suppose the election for Governor of New Hampshire was being held today and the candidates were Kevin Smith, the Republican and Bill Kennedy, the Democrat, who would you vote for?" [ROTATE CANDIDATES]

	<u>Apr. '12</u>	<u>Aug. '12</u>
Bill Kennedy	30%	27%
Kevin Smith	23%	29%
Other	1%	1%
Undecided	47%	44%
(N=)	(481)	(540)

Favorability Rating – Attorney Ovide Lamontagne

	<u>Favorable</u> 29%	<u>Neutral</u> 5%	<u>Unfavorable</u> 19%	<u>Don't Know</u> 47%	<u>(N=)</u> 580
STATEWIDE					
Registered Democrat	11%	5%	35%	49%	159
Registered Undeclared	32%	4%	19%	46%	233
Registered Republican	49%	6%	6%	39%	142
Democrat	9%	5%	35%	51%	240
Independent	26%	7%	10%	58%	91
Republican	52%	3%	5%	39%	232
Liberal	11%	7%	38%	44%	140
Moderate	32%	5%	20%	44%	215
Conservative	43%	3%	6%	48%	178
Support Tea Party	56%	2%	8%	35%	151
Neutral	29%	7%	8%	56%	167
Oppose Tea Party	13%	5%	39%	43%	215
Union household	34%	4%	36%	25%	64
Non union	29%	5%	17%	50%	505
Read Union Leader	35%	5%	19%	41%	152
Read Boston Globe	9%	4%	30%	57%	85
Watch WMUR	33%	5%	17%	44%	368
Listen to NHPR	25%	7%	28%	40%	177
10 yrs or less in NH	23%	2%	7%	68%	94
11 to 20 years	17%	12%	12%	59%	86
More than 20 years	34%	4%	24%	39%	380
18 to 34	12%	2%	11%	75%	61
35 to 49	27%	6%	13%	55%	103
50 to 64	31%	6%	23%	41%	216
65 and over	34%	4%	20%	42%	176
Male	32%	6%	19%	43%	287
Female	26%	4%	19%	51%	294
High school or less	28%	2%	13%	57%	116
Some college	30%	4%	11%	54%	131
College graduate	32%	4%	20%	43%	190
Post graduate	25%	7%	30%	38%	133
Less than \$30K	32%	3%	16%	49%	70
\$30K to \$60K	26%	3%	26%	45%	103
\$60K to \$75K	25%	4%	21%	49%	39
\$75K to \$100K	23%	3%	15%	60%	58
\$100K or more	31%	8%	21%	40%	134
Attend services 1 or more/week	44%	4%	12%	40%	150
1 2 times a month	39%	5%	12%	44%	77
Less often	23%	2%	24%	51%	151
Never	19%	7%	24%	50%	172
North Country	31%	0%	31%	37%	45
Central / Lakes	32%	5%	24%	40%	100
Connecticut Valley	26%	1%	14%	59%	87
Mass Border	29%	4%	13%	55%	181
Seacoast	28%	4%	22%	46%	98
Manchester Area	30%	15%	23%	32%	70
First Cong. Dist	30%	5%	22%	42%	270
Second Cong. Dist	28%	4%	16%	51%	311

Favorability Rating - Former state Representative Kevin Smith

STATEWIDE	<u>Favorable</u> 14%	<u>Neutral</u> 4%	<u>Unfavorable</u> 9%	<u>Don't Know</u> 73%	<u>(N=)</u> 580
Registered Democrat	6%	3%	19%	72%	159
Registered Undeclared	13%	4%	9%	75%	233
Registered Republican	26%	5%	2%	68%	142
Democrat	5%	5%	15%	75%	240
Independent	14%	6%	9%	71%	91
Republican	21%	3%	3%	73%	232
Liberal	4%	4%	17%	75%	140
Moderate	14%	4%	10%	72%	215
Conservative	22%	4%	3%	70%	178
Support Tea Party	31%	4%	5%	61%	151
Neutral	14%	4%	4%	77%	167
Oppose Tea Party	2%	5%	17%	76%	215
Union household	14%	6%	18%	62%	64
Non union	13%	4%	8%	75%	505
Read Union Leader	20%	4%	10%	67%	152
Read Boston Globe	6%	4%	15%	76%	85
Watch WMUR	14%	3%	8%	74%	368
Listen to NHPR	12%	5%	12%	71%	177
10 yrs or less in NH	10%	3%	7%	79%	94
11 to 20 years	14%	8%	4%	74%	86
More than 20 years	14%	4%	11%	72%	380
18 to 34	12%	3%	8%	77%	61
35 to 49	14%	8%	9%	69%	103
50 to 64	16%	3%	12%	68%	216
65 and over	8%	4%	5%	83%	176
Male	16%	7%	10%	67%	287
Female	11%	2%	8%	79%	294
High school or less	10%	3%	5%	82%	116
Some college	20%	5%	7%	67%	131
College graduate	14%	3%	7%	75%	190
Post graduate	9%	5%	16%	70%	133
Less than \$30K	13%	1%	7%	78%	70
\$30K to \$60K	11%	5%	8%	77%	103
\$60K to \$75K	5%	9%	2%	85%	39
\$75K to \$100K	5%	2%	4%	89%	58
\$100K or more	20%	6%	15%	59%	134
Attend services 1 or more/week	20%	3%	6%	71%	150
1 2 times a month	27%	3%	7%	63%	77
Less often	9%	4%	11%	76%	151
Never	7%	6%	11%	77%	172
North Country	5%	3%	12%	80%	45
Central / Lakes	11%	2%	14%	73%	100
Connecticut Valley	9%	0%	4%	88%	87
Mass Border	21%	5%	8%	66%	181
Seacoast	12%	3%	10%	75%	98
Manchester Area	13%	12%	9%	66%	70
First Cong. Dist	16%	5%	9%	70%	270
Second Cong. Dist	11%	4%	10%	76%	311

Favorability Rating - Former state Senator Maggie Hassan

STATEWIDE	<u>Favorable</u> 16%	<u>Neutral</u> 4%	<u>Unfavorable</u> 8%	<u>Don't Know</u> 72%	<u>(N=)</u> 580
Registered Democrat	34%	3%	3%	60%	159
Registered Undeclared	12%	4%	8%	76%	233
Registered Republican	6%	4%	16%	74%	142
Democrat	28%	4%	2%	66%	240
Independent	13%	5%	11%	72%	91
Republican	5%	3%	14%	78%	232
Liberal	34%	3%	5%	58%	140
Moderate	16%	4%	10%	70%	215
Conservative	4%	4%	11%	81%	178
Support Tea Party	3%	3%	17%	77%	151
Neutral	8%	4%	9%	80%	167
Oppose Tea Party	31%	4%	3%	61%	215
Union household	22%	6%	15%	56%	64
Non union	15%	3%	8%	74%	505
Read Union Leader	15%	3%	15%	67%	152
Read Boston Globe	29%	4%	3%	64%	85
Watch WMUR	17%	3%	9%	70%	368
Listen to NHPR	28%	3%	7%	61%	177
10 yrs or less in NH	8%	4%	3%	85%	94
11 to 20 years	10%	8%	7%	75%	86
More than 20 years	19%	3%	10%	68%	380
18 to 34	2%	4%	1%	93%	61
35 to 49	15%	6%	11%	68%	103
50 to 64	20%	3%	12%	65%	216
65 and over	17%	3%	5%	75%	176
Male	15%	5%	11%	69%	287
Female	16%	3%	6%	75%	294
High school or less	7%	3%	9%	82%	116
Some college	11%	4%	9%	76%	131
College graduate	13%	4%	9%	73%	190
Post graduate	32%	3%	7%	58%	133
Less than \$30K	9%	4%	9%	78%	70
\$30K to \$60K	16%	2%	3%	79%	103
\$60K to \$75K	17%	2%	1%	79%	39
\$75K to \$100K	12%	2%	9%	76%	58
\$100K or more	23%	6%	13%	57%	134
Attend services 1 or more/week	13%	3%	10%	74%	150
1 2 times a month	12%	3%	17%	68%	77
Less often	18%	2%	7%	74%	151
Never	17%	6%	5%	72%	172
North Country	19%	3%	9%	69%	45
Central / Lakes	19%	3%	10%	69%	100
Connecticut Valley	10%	1%	4%	85%	87
Mass Border	10%	3%	9%	78%	181
Seacoast	25%	5%	9%	61%	98
Manchester Area	16%	10%	9%	65%	70
First Cong. Dist	19%	4%	11%	66%	270
Second Cong. Dist	13%	3%	6%	78%	311

Favorability Rating - Former State Senator Jackie Cilley

STATEWIDE	<u>Favorable</u> 15%	<u>Neutral</u> 3%	<u>Unfavorable</u> 8%	<u>Don't Know</u> 74%	<u>(N=)</u> 580
Registered Democrat	27%	4%	1%	68%	159
Registered Undeclared	14%	3%	8%	75%	233
Registered Republican	5%	2%	17%	76%	142
Democrat	25%	4%	2%	69%	240
Independent	11%	5%	9%	75%	91
Republican	7%	1%	13%	79%	232
Liberal	27%	4%	4%	64%	140
Moderate	18%	3%	5%	74%	215
Conservative	5%	3%	14%	78%	178
Support Tea Party	5%	3%	16%	76%	151
Neutral	11%	2%	8%	80%	167
Oppose Tea Party	28%	5%	2%	65%	215
Union household	29%	4%	9%	58%	64
Non union	13%	3%	7%	76%	505
Read Union Leader	11%	2%	11%	76%	152
Read Boston Globe	21%	4%	2%	73%	85
Watch WMUR	16%	2%	8%	74%	368
Listen to NHPR	25%	4%	7%	64%	177
10 yrs or less in NH	13%	4%	2%	81%	94
11 to 20 years	10%	7%	9%	74%	86
More than 20 years	17%	2%	9%	72%	380
18 to 34	6%	3%	1%	89%	61
35 to 49	13%	8%	10%	69%	103
50 to 64	19%	2%	9%	70%	216
65 and over	14%	2%	7%	77%	176
Male	12%	4%	11%	72%	287
Female	18%	2%	4%	76%	294
High school or less	5%	2%	8%	84%	116
Some college	12%	4%	11%	74%	131
College graduate	15%	3%	5%	77%	190
Post graduate	27%	5%	7%	60%	133
Less than \$30K	11%	3%	14%	72%	70
\$30K to \$60K	16%	1%	6%	76%	103
\$60K to \$75K	16%	5%	4%	75%	39
\$75K to \$100K	13%	2%	5%	80%	58
\$100K or more	20%	6%	10%	63%	134
Attend services 1 or more/week	11%	3%	12%	74%	150
1 2 times a month	13%	3%	12%	72%	77
Less often	17%	2%	5%	75%	151
Never	18%	4%	4%	73%	172
North Country	20%	5%	9%	66%	45
Central / Lakes	21%	3%	12%	64%	100
Connecticut Valley	8%	0%	3%	89%	87
Mass Border	10%	2%	6%	81%	181
Seacoast	26%	3%	12%	59%	98
Manchester Area	8%	8%	6%	77%	70
First Cong. Dist	19%	5%	11%	66%	270
Second Cong. Dist	12%	2%	5%	81%	311

Favorability Rating – Businessman Bill Kennedy

	<u>Favorable</u> 8%	<u>Neutral</u> 3%	<u>Unfavorable</u> 5%	<u>Don't Know</u> 83%	<u>(N=)</u> 580
STATEWIDE					
Registered Democrat	9%	4%	7%	81%	159
Registered Undeclared	8%	3%	7%	82%	233
Registered Republican	9%	3%	3%	86%	142
Democrat	10%	3%	6%	81%	240
Independent	5%	8%	8%	79%	91
Republican	9%	2%	4%	85%	232
Liberal	10%	4%	8%	78%	140
Moderate	12%	2%	4%	82%	215
Conservative	5%	5%	5%	85%	178
Support Tea Party	9%	3%	7%	81%	151
Neutral	10%	4%	3%	83%	167
Oppose Tea Party	9%	3%	7%	82%	215
Union household	9%	6%	8%	77%	64
Non union	8%	3%	5%	83%	505
Read Union Leader	11%	2%	5%	82%	152
Read Boston Globe	8%	3%	5%	84%	85
Watch WMUR	9%	3%	5%	82%	368
Listen to NHPR	14%	4%	9%	73%	177
10 yrs or less in NH	9%	5%	4%	82%	94
11 to 20 years	2%	8%	3%	87%	86
More than 20 years	10%	2%	7%	82%	380
18 to 34	8%	4%	5%	84%	61
35 to 49	8%	7%	9%	75%	103
50 to 64	10%	4%	5%	82%	216
65 and over	7%	1%	4%	88%	176
Male	8%	4%	6%	81%	287
Female	9%	2%	4%	84%	294
High school or less	8%	2%	4%	86%	116
Some college	11%	6%	6%	78%	131
College graduate	8%	3%	6%	83%	190
Post graduate	6%	4%	6%	84%	133
Less than \$30K	10%	3%	3%	84%	70
\$30K to \$60K	12%	2%	5%	81%	103
\$60K to \$75K	8%	2%	3%	86%	39
\$75K to \$100K	7%	2%	4%	87%	58
\$100K or more	10%	6%	6%	78%	134
Attend services 1 or more/week	8%	2%	1%	89%	150
1 2 times a month	9%	2%	5%	83%	77
Less often	10%	2%	10%	79%	151
Never	7%	6%	6%	80%	172
North Country	8%	1%	14%	77%	45
Central / Lakes	6%	4%	7%	83%	100
Connecticut Valley	8%	0%	2%	91%	87
Mass Border	12%	3%	1%	83%	181
Seacoast	10%	2%	9%	79%	98
Manchester Area	1%	11%	8%	80%	70
First Cong. Dist	9%	4%	7%	80%	270
Second Cong. Dist	8%	3%	4%	85%	311

**2012 Gubernatorial Election – Lamontagne vs. Hassan
(2012 Likely General Election Voters)**

STATEWIDE	<u>Lamontagne</u> 33%	<u>Hassan</u> 31%	<u>Other</u> 1%	<u>Undecided</u> 35%	<u>(N)</u> 546
Registered Democrat	6%	64%	1%	29%	152
Registered Undeclared	31%	25%	1%	43%	223
Registered Republican	71%	3%	2%	24%	137
Democrat	4%	64%	1%	31%	233
Independent	22%	16%	1%	62%	73
Republican	67%	3%	1%	29%	224
Liberal	7%	69%	1%	24%	136
Moderate	27%	31%	2%	40%	203
Conservative	65%	6%	0%	29%	166
Support Tea Party	71%	5%	2%	23%	144
Neutral	37%	21%	0%	41%	154
Oppose Tea Party	6%	60%	1%	32%	211
Union household	34%	41%	3%	22%	63
Non union	33%	30%	1%	36%	473
Read Union Leader	43%	32%	0%	25%	145
Read Boston Globe	10%	51%	1%	37%	81
Watch WMUR	34%	29%	1%	36%	350
Listen to NHPR	23%	44%	1%	33%	172
10 yrs or less in NH	36%	34%	0%	30%	90
11 to 20 years	31%	27%	1%	41%	82
More than 20 years	33%	31%	1%	34%	358
18 to 34	28%	16%	2%	54%	55
35 to 49	39%	32%	1%	29%	93
50 to 64	33%	36%	1%	30%	210
65 and over	32%	31%	0%	37%	166
Male	39%	26%	1%	35%	269
Female	28%	36%	1%	35%	277
High school or less	34%	21%	1%	44%	106
Some college	35%	25%	2%	38%	114
College graduate	35%	35%	1%	29%	186
Post graduate	28%	40%	0%	32%	130
Less than \$30K	27%	33%	0%	40%	64
\$30K to \$60K	31%	41%	1%	26%	99
\$60K to \$75K	29%	33%	0%	38%	38
\$75K to \$100K	32%	33%	4%	31%	54
\$100K or more	31%	37%	0%	32%	130
Attend services 1 or more/week	45%	21%	1%	33%	145
1 2 times a month	41%	22%	0%	37%	75
Less often	28%	36%	0%	36%	142
Never	24%	41%	2%	34%	161
North Country	21%	32%	5%	42%	43
Central / Lakes	32%	32%	0%	36%	98
Connecticut Valley	28%	28%	0%	45%	79
Mass Border	40%	31%	1%	29%	168
Seacoast	33%	30%	2%	35%	94
Manchester Area	33%	34%	0%	33%	64
First Cong. Dist	36%	30%	1%	33%	259
Second Cong. Dist	30%	32%	1%	37%	287

**2012 Gubernatorial Election – Smith vs. Hassan
(2012 Likely General Election Voters)**

STATEWIDE	<u>Smith</u> 29%	<u>Hassan</u> 31%	<u>Other</u> 1%	<u>Undecided</u> 39%	<u>(N)</u> 542
Registered Democrat	6%	65%	1%	28%	153
Registered Undeclared	23%	24%	2%	51%	218
Registered Republican	69%	2%	1%	28%	138
Democrat	3%	62%	0%	35%	233
Independent	20%	21%	3%	56%	72
Republican	60%	3%	1%	36%	221
Liberal	7%	67%	1%	25%	136
Moderate	22%	29%	2%	47%	202
Conservative	57%	8%	1%	34%	162
Support Tea Party	64%	7%	2%	27%	145
Neutral	31%	18%	1%	50%	149
Oppose Tea Party	4%	60%	0%	35%	209
Union household	25%	39%	0%	36%	63
Non union	30%	30%	1%	39%	468
Read Union Leader	36%	30%	1%	34%	144
Read Boston Globe	12%	58%	0%	30%	83
Watch WMUR	30%	30%	1%	39%	345
Listen to NHPR	15%	45%	1%	39%	171
10 yrs or less in NH	36%	35%	0%	29%	89
11 to 20 years	31%	30%	1%	38%	82
More than 20 years	27%	31%	2%	40%	353
18 to 34	21%	20%	0%	59%	55
35 to 49	31%	29%	1%	39%	91
50 to 64	31%	34%	1%	35%	210
65 and over	27%	34%	2%	37%	162
Male	34%	29%	1%	37%	265
Female	25%	32%	2%	40%	277
High school or less	30%	23%	2%	45%	106
Some college	38%	24%	1%	38%	116
College graduate	26%	34%	2%	38%	186
Post graduate	26%	40%	0%	34%	124
Less than \$30K	36%	28%	0%	36%	64
\$30K to \$60K	20%	44%	1%	35%	95
\$60K to \$75K	17%	34%	0%	49%	38
\$75K to \$100K	34%	27%	2%	37%	54
\$100K or more	31%	38%	0%	31%	131
Attend services 1 or more/week	42%	20%	3%	36%	145
1 2 times a month	39%	23%	0%	38%	73
Less often	22%	35%	1%	42%	141
Never	19%	43%	1%	37%	158
North Country	23%	30%	0%	47%	43
Central / Lakes	28%	30%	3%	38%	96
Connecticut Valley	19%	24%	0%	57%	76
Mass Border	39%	31%	1%	28%	171
Seacoast	26%	35%	1%	39%	94
Manchester Area	26%	33%	2%	39%	63
First Cong. Dist	30%	31%	2%	37%	257
Second Cong. Dist	29%	30%	0%	40%	285

**2012 Gubernatorial Election – Lamontagne vs. Cilley
(2012 Likely General Election Voters)**

STATEWIDE	<u>Lamontagne</u> 35%	<u>Cilley</u> 31%	<u>Other</u> 1%	<u>Undecided</u> 33%	<u>(N)</u> 543
Registered Democrat	8%	63%	1%	28%	153
Registered Undeclared	31%	26%	1%	41%	217
Registered Republican	75%	3%	0%	22%	139
Democrat	4%	64%	1%	31%	234
Independent	29%	15%	1%	55%	66
Republican	67%	3%	1%	28%	225
Liberal	10%	67%	1%	22%	136
Moderate	30%	30%	1%	38%	202
Conservative	61%	8%	1%	31%	167
Support Tea Party	69%	4%	1%	26%	145
Neutral	40%	19%	0%	41%	151
Oppose Tea Party	7%	62%	1%	29%	211
Union household	32%	40%	1%	26%	61
Non union	35%	30%	1%	34%	470
Read Union Leader	43%	29%	1%	27%	145
Read Boston Globe	15%	54%	0%	31%	80
Watch WMUR	37%	29%	1%	33%	345
Listen to NHPR	22%	45%	2%	31%	170
10 yrs or less in NH	35%	34%	1%	30%	89
11 to 20 years	33%	24%	1%	42%	76
More than 20 years	35%	33%	1%	32%	360
18 to 34	24%	19%	0%	57%	54
35 to 49	36%	30%	2%	32%	94
50 to 64	35%	37%	1%	28%	208
65 and over	36%	31%	1%	33%	164
Male	41%	25%	1%	33%	263
Female	29%	37%	1%	34%	280
High school or less	38%	22%	1%	40%	102
Some college	35%	26%	0%	39%	113
College graduate	34%	36%	2%	29%	186
Post graduate	32%	38%	1%	29%	130
Less than \$30K	31%	35%	0%	34%	64
\$30K to \$60K	33%	41%	0%	26%	99
\$60K to \$75K	27%	38%	0%	36%	38
\$75K to \$100K	36%	27%	0%	38%	54
\$100K or more	35%	36%	3%	27%	130
Attend services 1 or more/week	44%	21%	1%	35%	145
1 2 times a month	40%	24%	0%	36%	75
Less often	33%	35%	1%	31%	143
Never	24%	42%	2%	32%	154
North Country	23%	35%	0%	42%	43
Central / Lakes	33%	32%	0%	35%	98
Connecticut Valley	30%	29%	0%	41%	79
Mass Border	43%	30%	1%	26%	163
Seacoast	33%	31%	1%	35%	94
Manchester Area	33%	31%	3%	32%	64
First Cong. Dist	37%	31%	1%	31%	260
Second Cong. Dist	33%	31%	0%	35%	282

**2012 Gubernatorial Election – Smith vs. Cilley
(2012 Likely General Election Voters)**

STATEWIDE	<u>Smith</u> 28%	<u>Cilley</u> 31%	<u>Other</u> 1%	<u>Undecided</u> 39%	<u>(N)</u> 540
Registered Democrat	4%	64%	0%	32%	153
Registered Undeclared	22%	25%	3%	50%	215
Registered Republican	67%	5%	1%	27%	138
Democrat	2%	63%	0%	35%	234
Independent	18%	14%	3%	64%	68
Republican	58%	5%	2%	35%	221
Liberal	6%	65%	1%	29%	136
Moderate	21%	30%	3%	46%	201
Conservative	55%	11%	1%	33%	161
Support Tea Party	63%	7%	2%	27%	145
Neutral	26%	22%	1%	50%	145
Oppose Tea Party	5%	60%	1%	35%	211
Union household	22%	43%	1%	33%	61
Non union	29%	30%	1%	40%	467
Read Union Leader	34%	29%	2%	35%	145
Read Boston Globe	9%	51%	0%	39%	83
Watch WMUR	29%	30%	2%	39%	344
Listen to NHPR	18%	44%	2%	37%	170
10 yrs or less in NH	32%	37%	1%	30%	88
11 to 20 years	32%	24%	1%	44%	80
More than 20 years	26%	33%	2%	39%	355
18 to 34	17%	25%	0%	58%	54
35 to 49	31%	27%	2%	40%	92
50 to 64	30%	34%	1%	35%	207
65 and over	25%	34%	2%	38%	164
Male	32%	27%	1%	39%	262
Female	24%	35%	1%	39%	278
High school or less	26%	23%	2%	48%	106
Some college	37%	28%	1%	34%	113
College graduate	27%	34%	2%	38%	185
Post graduate	23%	39%	1%	37%	126
Less than \$30K	32%	37%	0%	31%	64
\$30K to \$60K	22%	44%	1%	34%	95
\$60K to \$75K	20%	37%	0%	43%	38
\$75K to \$100K	32%	28%	2%	38%	54
\$100K or more	31%	35%	2%	33%	129
Attend services 1 or more/week	41%	22%	3%	35%	145
1 2 times a month	37%	24%	0%	39%	74
Less often	23%	36%	1%	40%	143
Never	15%	42%	1%	41%	153
North Country	22%	33%	0%	45%	42
Central / Lakes	26%	35%	3%	36%	97
Connecticut Valley	17%	30%	0%	53%	76
Mass Border	39%	26%	1%	34%	167
Seacoast	27%	38%	1%	35%	94
Manchester Area	23%	32%	5%	41%	64
First Cong. Dist	29%	33%	2%	35%	259
Second Cong. Dist	27%	30%	0%	43%	281

**2012 Gubernatorial Election – Lamontagne vs. Kennedy
(2012 Likely General Election Voters)**

STATEWIDE	<u>Lamontagne</u> 35%	<u>Kennedy</u> 29%	<u>Other</u> 1%	<u>Undecided</u> 36%	<u>(N)</u> 540
Registered Democrat	6%	61%	1%	32%	153
Registered Undeclared	34%	22%	1%	43%	218
Registered Republican	74%	4%	1%	21%	136
Democrat	4%	60%	0%	36%	231
Independent	26%	14%	1%	58%	69
Republican	69%	3%	2%	26%	223
Liberal	10%	63%	0%	27%	136
Moderate	31%	27%	1%	41%	196
Conservative	59%	9%	2%	30%	166
Support Tea Party	68%	9%	2%	21%	143
Neutral	41%	18%	0%	41%	149
Oppose Tea Party	8%	55%	1%	36%	209
Union household	36%	35%	1%	27%	60
Non union	34%	28%	1%	36%	469
Read Union Leader	42%	27%	1%	29%	142
Read Boston Globe	7%	46%	0%	48%	81
Watch WMUR	37%	27%	1%	36%	342
Listen to NHPR	26%	41%	1%	32%	170
10 yrs or less in NH	32%	34%	1%	32%	90
11 to 20 years	28%	22%	3%	47%	80
More than 20 years	37%	30%	1%	33%	353
18 to 34	26%	24%	0%	50%	55
35 to 49	40%	30%	2%	29%	92
50 to 64	35%	34%	1%	29%	204
65 and over	33%	27%	1%	40%	166
Male	41%	25%	1%	33%	265
Female	28%	32%	1%	38%	275
High school or less	37%	20%	1%	43%	106
Some college	39%	24%	2%	35%	107
College graduate	32%	35%	1%	32%	186
Post graduate	33%	32%	1%	34%	130
Less than \$30K	28%	29%	3%	41%	61
\$30K to \$60K	32%	40%	0%	28%	99
\$60K to \$75K	28%	32%	0%	40%	38
\$75K to \$100K	36%	29%	0%	35%	52
\$100K or more	34%	34%	3%	28%	128
Attend services 1 or more/week	47%	18%	1%	34%	141
1 2 times a month	39%	24%	3%	34%	75
Less often	31%	32%	1%	36%	141
Never	24%	40%	1%	35%	158
North Country	23%	34%	0%	43%	40
Central / Lakes	33%	23%	0%	44%	95
Connecticut Valley	35%	25%	0%	40%	79
Mass Border	39%	31%	2%	28%	168
Seacoast	34%	30%	1%	35%	94
Manchester Area	33%	30%	3%	34%	64
First Cong. Dist	38%	28%	1%	33%	258
Second Cong. Dist	32%	29%	1%	38%	282

**2012 Gubernatorial Election – Smith vs. Kennedy
(2012 Likely General Election Voters)**

STATEWIDE	<u>Smith</u> 29%	<u>Kennedy</u> 27%	<u>Other</u> 1%	<u>Undecided</u> 44%	<u>(N)</u> 540
Registered Democrat	6%	56%	0%	37%	153
Registered Undeclared	25%	18%	3%	54%	215
Registered Republican	61%	7%	1%	32%	138
Democrat	3%	55%	0%	42%	233
Independent	29%	4%	3%	63%	69
Republican	55%	5%	2%	38%	221
Liberal	6%	63%	1%	31%	136
Moderate	25%	20%	3%	53%	199
Conservative	51%	10%	1%	38%	162
Support Tea Party	62%	8%	2%	28%	145
Neutral	27%	19%	1%	53%	147
Oppose Tea Party	6%	49%	1%	44%	209
Union household	23%	25%	1%	51%	63
Non union	29%	27%	1%	42%	466
Read Union Leader	34%	24%	2%	40%	144
Read Boston Globe	13%	45%	0%	42%	83
Watch WMUR	29%	25%	2%	45%	343
Listen to NHPR	19%	38%	2%	41%	169
10 yrs or less in NH	34%	35%	1%	30%	89
11 to 20 years	32%	22%	1%	46%	80
More than 20 years	26%	26%	2%	46%	353
18 to 34	22%	25%	0%	52%	55
35 to 49	33%	23%	2%	42%	91
50 to 64	28%	31%	1%	40%	208
65 and over	26%	26%	2%	46%	162
Male	29%	24%	1%	45%	262
Female	28%	29%	1%	42%	277
High school or less	24%	20%	2%	54%	106
Some college	39%	20%	1%	40%	112
College graduate	29%	29%	1%	40%	187
Post graduate	22%	36%	1%	42%	124
Less than \$30K	35%	26%	0%	39%	64
\$30K to \$60K	18%	42%	1%	38%	95
\$60K to \$75K	18%	31%	0%	50%	38
\$75K to \$100K	31%	22%	2%	45%	54
\$100K or more	31%	25%	2%	42%	129
Attend services 1 or more/week	41%	18%	3%	37%	145
1 2 times a month	40%	16%	0%	43%	73
Less often	19%	31%	1%	50%	142
Never	19%	38%	1%	42%	155
North Country	23%	25%	0%	52%	43
Central / Lakes	26%	23%	3%	48%	96
Connecticut Valley	14%	27%	0%	59%	76
Mass Border	41%	27%	1%	32%	168
Seacoast	27%	30%	1%	43%	94
Manchester Area	25%	26%	5%	44%	63
First Cong. Dist	30%	25%	3%	42%	258
Second Cong. Dist	27%	28%	0%	45%	282