

# LRF – We make the country grow

The Federation of Swedish Farmers





# LRF – We make the country grow

The Federation of Swedish Farmers, LRF, is the largest interest and business organization for farmers and foresters in Sweden. As such, LRF is a unique and creative partner for both green growth and sustainable development.

LRF and Swedish farmers promote a healthy natural environment, create jobs and provide food and natural products for all. At the same time, we are focussed on the future – access to bio-energy, increased food production and improved food quality are today recognized as essential ingredients for sustainable development worldwide.

LRF is represented at local, regional, national and international levels. Members are supported by subsidiary companies as well as by a comprehensive organization that both improves knowledge and aims to influence public opinion on issues of strategic importance.

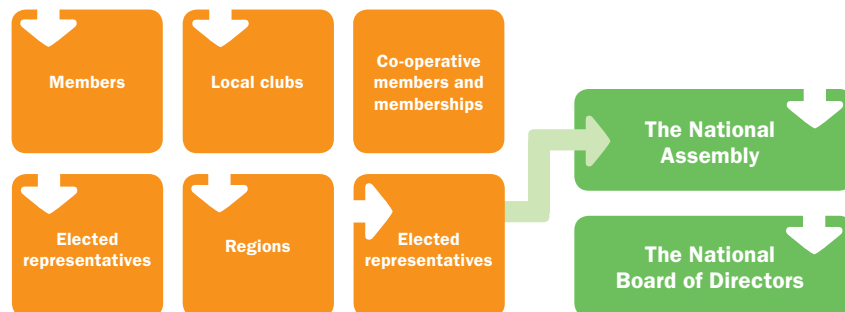
## Members throughout Sweden

Our members are farmer-owned companies or individual members, i.e. farmers, foresters and others who are helping to strengthen the status of Swedish rural communities. Individual members are organized through local and regional associations. Typically, a farmer is both an individual member and a member

through his/her co-operative.

Today, LRF has more than 170,000 individual members. Together we represent some 90,000 enterprises, making LRF the largest small-enterprise organization in Sweden. Member numbers have increased since the mid 1990's and continue to rise.

## STRUCTURE



## Vision and mission

Our aim is to promote development of the green industry by helping farmers, foresters and other land-use entrepreneurs to fulfil their visions for sustainable growth and profitability. LRF seeks to promote conditions that benefit the growth of sustainable and competitive

enterprises, and to develop the foundations of vibrant communities and enterprises in rural areas.

LRF is not affiliated to any political party. It is an independent organization financed by membership fees, returns from investments and income from subsidiaries.



# Partner for green growth

LRF places a high priority on political decisions that facilitate rural industries and green growth. This applies to local and regional policies as well as national and international agreements. Strong, green rural businesses benefit the whole Swedish population by providing high quality produce and environmental services, whilst also building the foundations for functional rural infrastructure and services.

## LRF'S TOP PRIORITIES

### ► Ownership rights

Private ownership is a precondition for economic development and effective markets. LRF is active in various ways to help secure, clarify and develop ownership rights.

### ► Business development

LRF helps its members to develop their enterprises by providing professional services, corporate

development assistance, and pro-active business operations.

### ► Animal welfare

Swedish farmers have adopted values, approaches and guidelines that promote sustainable food production. These include the treatment of animals without the use of prophylactic antibiotics. Swedish animal protection laws are among Europe's strongest.

### ► Farming and food

LRF aims to raise interest in Swedish agricultural production, highlighting the pleasures and health benefits of good food. This includes focussing on the trend in consumer demand for small scale, locally produced food and goods.

### ► Engage young people

LRF encourages young people to choose studies leading to a career in the farming sector. We also focus on activities that make agriculture and forestry

more attractive. LRF School Contact offers a nationwide network of farms ideal for school visits.

### ► Healthy environment and clean energy

Farmers and foresters influence and contribute to the state of the natural environment. Above all, LRF promotes actions that support increased biodiversity, efficient energy use, reduced nutrient leakage, and renewable energy sources such as wind power and bio-energy.





## Beyond Swedish farmers

LRF is a member of the European organizations COPA and COGECA, both of which are active in Brussels on behalf of farmers and farmers' co-operatives. At the global level LRF plays an active role in organizations such as the UN's Food and Agriculture Organization (FAO) and the World Farmers' Organization. WFO has a mission to bring together national agricultural producer organizations and agricultural producer cooperative organizations to create policies and advocate on world farmers' behalf, in order to improve the economic situation and livelihood of producers, their families and rural communities.

LRF is one of seven project partners in the Baltic Deal that gathers farmers and farmers' advisory organizations around the Baltic Sea in a unique effort to raise competence concerning agri-environmental practices and measures. The aim is to support farmers to reduce nutrient losses from farms, while maintaining production and competitiveness.

LRF is also one of the founders of the Swedish Cooperative Centre, created by the Swedish cooperative movement in 1958. Through long-term development work and "help to self-help" they equip poor people with the tools needed to fight poverty themselves. Main fields of work are rural development, housing and habitat and financial services.

### The climate challenge – farmers part of the solution

Like other sectors of society, agriculture and forestry have a responsibility to take measures that limit their impacts on climate change.

Farmers and foresters also have a unique possibility to contribute by using natural resources wisely and by promoting carbon capture schemes. LRF and Swedish farmers are working on solutions for climate change through:

- **Decreased emissions**
- **Increased energy and resource efficiency**
- **Production of renewable energy**
- **Good farm examples of best practice**
- **Climate-smart labelling for food**





