

Caron Yarns

Simply Soft®

Simply Soft® Chunky

Simply Soft® Eco

Simply Soft® Heathers

Simply Soft® Light **NEW**

Simply Soft® Paints

Simply Soft® Party

Craft & Rug Yarn

Natura®

One Pound



Check out our newest yarns!

Caron Latch Hook Kits

Shaggy

Caron® Classics

Natura®

WonderArt®

Krafty Kids™



Icelandic Update Sweater

with

SIMPLY SOFT

designed by Kristen Tandyke

TECHNIQUE USED: Knit



INTERMEDIATE

SIZES

Small (Medium, Large, 1X)

FINISHED MEASUREMENTS

Bust: 36 (39.5, 43.5, 47)"/91.5

(100.5, 110.5, 119.5)cm

Length: 29 (29.5, 31, 31.5)"/73.5

(75, 78.5, 80)cm

MATERIALS

Buy Now

Caron International's Simply Soft

(100% Acrylic; 6oz/170g,

315yds/288m):

#9761 Plum Perfect (A), 3 (4, 4, 5)
skeins

#9759 Ocean (B), 1 skein

#9758 Forest Floor (C), 1 skein

#9742 Grey Heather (D), 1 skein

NEEDLES

Buy Now

Size US 6 (4mm) double pointed
needles

Size US 7 (4.5mm) double pointed
needles, or size to obtain gauge.

Buy Now



click images to enlarge

Printer Friendly PDF



Size US 7 (4.5mm) circular needle,

29"/73.5cm long, or size to obtain

gauge.

ADDITIONAL MATERIALS

Stitch markers

Stitch holders or waste yarn

Yarn needle

GAUGE

In Stockinette stitch, 19 sts and 24 rows = 4"/10cm, using larger needle.

STITCHES USED

Garter stitch (worked in rnds):

Knit 1 rnd, purl 1 rnd.

Stockinette stitch (worked in rnds):

Knit every rnd.

SPECIAL STITCHES

k2tog: Knit 2 sts together through the front loops. (1 st decreased)

M1: Lift strand between needles to LH needle and knit strand through the back loop, twisting it to prevent a hole. (1 st increased)

NOTES

1. Sweater begins with 3 pieces worked separately, 2 sleeves and body. The pieces are worked from the lower edge upwards.
2. Yoke is worked from top of sleeves and body up to neck edge.
3. Color patterns are worked from charts. Change color as shown in charts. Read all rows of charts from right to left.
4. It is recommended using long tail method for cast on.

SLEEVE (make 2)

With larger dpns and A, CO 54 (60, 60, 66) sts. Join in a rnd, taking care not to twist sts, distributing sts evenly over dpns as follows:

With yarn in back, sl first st on RH needle to LH needle, bring yarn to front between the needles, sl first 2 sts on LH needle to RH needle, bring yarn to back between needles, sl first st on RH needle to LH needle.; place marker for beg of rnd.

Beg with a knit rnd, work in Garter st for 4 rnds.

Work in St for 2 rnds.

Work Dot Chart for 2 rnds.

Change to A.

Work in St st for 2 rnds.

Next Rnd: Purl.

Work even in St st until piece measures 3"/7.5cm from beg.

Shape Sleeve

Inc rnd: K1, M1, k to last st, M1, k1 - 56 (62, 62, 68) sts.

Work even in St st for 9 (13, 9, 13) rnds.

Repeat inc rnd - 58 (64, 64, 70) sts.

Repeat last 10 (14, 10, 14) rnds once more - 60 (66, 66, 72) sts.

Work even in St st for 7 rnds.

Repeat inc rnd - 62 (68, 68, 74) sts.

Repeat last 8 rnds 1 (0, 1, 0) times - 64 (68, 70, 74) sts.

Work even in St st until piece measures 11.5 (11.5, 12, 12)"/29 (29, 30.5, 30.5)cm from beg.

Sl sts to a holder. Cut yarn.

BODY

With circular needle and A, CO 186 (204, 222, 240) sts. Join, taking care not to twist sts; placing marker for beg of rnd. Work same as for Sleeves until piece measures 3"/7.5cm from beg; placing a marker in center of last rnd - 93 (102, 111, 120) sts on each side of marker for front and back.

Shape Sides

Dec rnd: [K1, k2tog, k to 3 sts before marker, ssk, k1, slip marker (sm)] 2 times - 182 (200, 218, 236) sts.

Work even in St st for 21 rnds.

Repeat dec rnd - 178 (196, 214, 232) sts.

Repeat last 22 rnds once more - 174 (192, 210, 228) sts.

Work even in St st for 29 rnds.

Repeat dec rnd - 170 (188, 206, 224) sts.

Work even in St st until piece measures 19 (19, 19.5, 19.5)"/48.5 (48.5, 49.5, 49.5)cm from beg.

Yoke

Joining rnd: With A, k4 (4, 5, 5) and sl these sts to a holder, k to 4 (4, 5, 5) sts before next marker, sl these 4 (4, 5, 5) sts to a holder; working across sts of first sleeve, sl first 4 (4, 5, 5) sts to a holder, k56 (60, 60, 64) sts, leave last 4 (4, 5, 5) sts on holder; working across remaining body sts, sl next 8 (8, 10, 10) sts to a holder, k to last 4 (4, 5, 5) sts, sl the last 4 (4, 5, 5) body sts onto holder; working across sts of second sleeve, sl first 4 (4, 5, 5) sts to a holder, k56 (60, 60, 64) sts, leave last 4 (4, 5, 5) sts on holder - 266 (292, 306, 332) sts.

Work in St st for 3 (7, 11, 15) rnds.

Dec Rnd 1: K5 (2, 4, 1), k2tog, *[k5 (3, 5, 3), k2tog] 1 (1, 3, 1) time(s), [k6 (4, 6, 4), k2tog] 1 (6, 1, 6) time(s); repeat from * 16 (6, 9, 7) more times, (for size L only, k5, k2tog once more), k4 (1, 3, 1) - 231 (242, 264, 275) sts.

Next rnd: Purl.

Work Dash Chart for 5 rnds.

Dec Rnd 2: With A, k2 (1, 5, 0), k2tog, *[k10 (9, 9, 8), k2tog] 1 (2, 23, 1) time(s), [k11 (10, 9, 9), k2tog] 1 (1, 0, 1) time(s); repeat from * 8 (6, 0, 12) more times, k2 (1, 4, 0) - 212 (220, 240, 248) sts.

Work Zig Chart for 4 rnds.

Sizes S (M, 1X) only (Dec Rnd 3): K4 (0, 0), *[k2tog, k4 (5, 3)] 1 (1, 4) time(s), [k2tog, k5 (4, 4)] 1 (8, 7) time(s); repeat from * 15 (3, 3) more times - 180 (184, 204) sts.

Size L only (Dec Rnd 3): *K2tog, k4; repeat from * 39 more times - 200 sts.

All Sizes

Work Slip Stitch Chart for 14 rnds. Change to larger dpns when number of sts has been sufficiently reduced.

Size S only (Dec Rnd 4): *K1, k2tog; repeat from * around - 120 sts.

Sizes M (L, 1X) only (Dec Rnd 4): *[K1, k2tog] 14 (4, 3) times, [k2, k2tog] 1 (2, 2) time(s); repeat from * 3 (9, 11) more times - 124 (140, 144) sts.

All Sizes

Work Zig Chart for 4 rnds.

Size S only (Dec Rnd 5): *K1, k2tog, [k2, k2tog] 3 times; repeat from * 7 more times - 88 sts.

Size M only (Dec Rnd 5): *K1, k2tog, [k2, k2tog, k1, k2tog] 4 times; repeat from * 3 more times - 88 sts.

Sizes L (1X) only (Dec Rnd 5): K2tog, *[k1, k2tog] 1 (3) time(s), k2, k2tog; repeat from * 17 (9) more times, [k1, k2tog] 4 times - 99 sts.

All Sizes

Work Dash Chart for 5 rnds.

With A, work even in St st until yoke measures 2"/2.5cm from end of Dash Chart.

Sizes S (M) only (Dec Rnd 6): [K3, k2tog, k4, k2tog] 8 times - 72 (72) sts.

Sizes L (1X) only (Dec Rnd 6): *[K2, k2tog] 2 times, [k3, k2tog] 5 times; repeat from * 2 more times - 78 sts.

All Sizes

Work Dot Chart for 2 rnds.

Change to smaller dpns. (**Note:** You may prefer to use a 16"/40cm (or shorter) circular needle.)

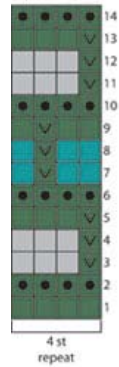
Beg with a knit rnd, work in Garter st for 5 rnds.

BO loosely purlwise.

FINISHING

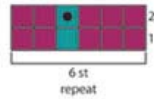
Sew underarm seams. Using yarn needle, weave in all ends.

Slip Stitch Chart

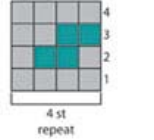


- Knit
- Purl
- Sl 1 st purlwise, wyib
- #9761 Plum Perfect (A)
- #9759 Ocean (B)
- #9758 Forest Floor (C)
- #9742 Grey Heather (D)

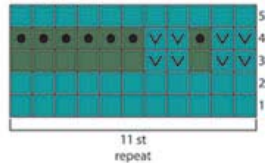
Dot Chart



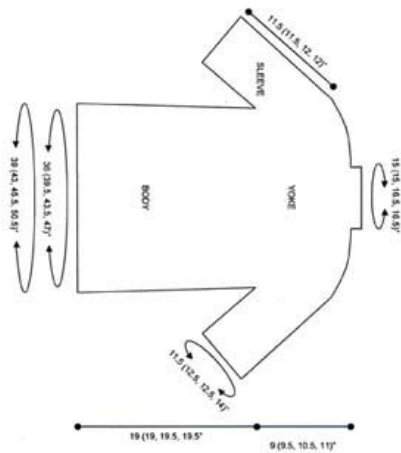
Zig Chart



Dash Chart



Note: Color of each square indicates yarn color. Symbol in each square indicates stitch, as in key.



|| Yarns || Free Projects || Where to Buy || Links || Learning || Contact Us || Caron Connections
|| Latch Hook ||

Visit Bond America online

©2012 Caron International