

DAILY AIR CORP.



CONTENTS

	(I) OPERATIONS
	(III) VISION
	(IV) REFERENCE

FORWARD

Founded in 1992 and based in Taipei, Daily Air Corp. (DAC) inaugurated helicopter service with one BK-117 in General Aviation (Utility) category.

Fleet expanded to nine in 1999, with BK-117, B-430, and B-412 expanding service in Air Transport category, while downsized to two BK-117's due to government-fleet rapid expansion to Utility category.

In June 2005, DAC stepped into Schedule Flight Service by introducing four Dornier 228-212.

SCHEDULE FLIGHT BUSINESS

ROUTES	DISTANCE (NM)
TTT - GNI	24
TTT - KYD	54
KHH - CMJ	99
KHH - WOT	110
CMJ - MKG	25



Eastern Sector (Weekly Flights)

- Nov - Mar : TTT - KYD (54 NM; 84 flights), TTT - GNI (24 NM; 42 flights)
- Apr - Oct : TTT - KYD (106 flights), TTT - GNI (42 flights)

Western Sector (Weekly Flights)

- KHH - CMJ (24 flights), KHH - WOT (4 flights), MKG - CMJ (14 flights) °

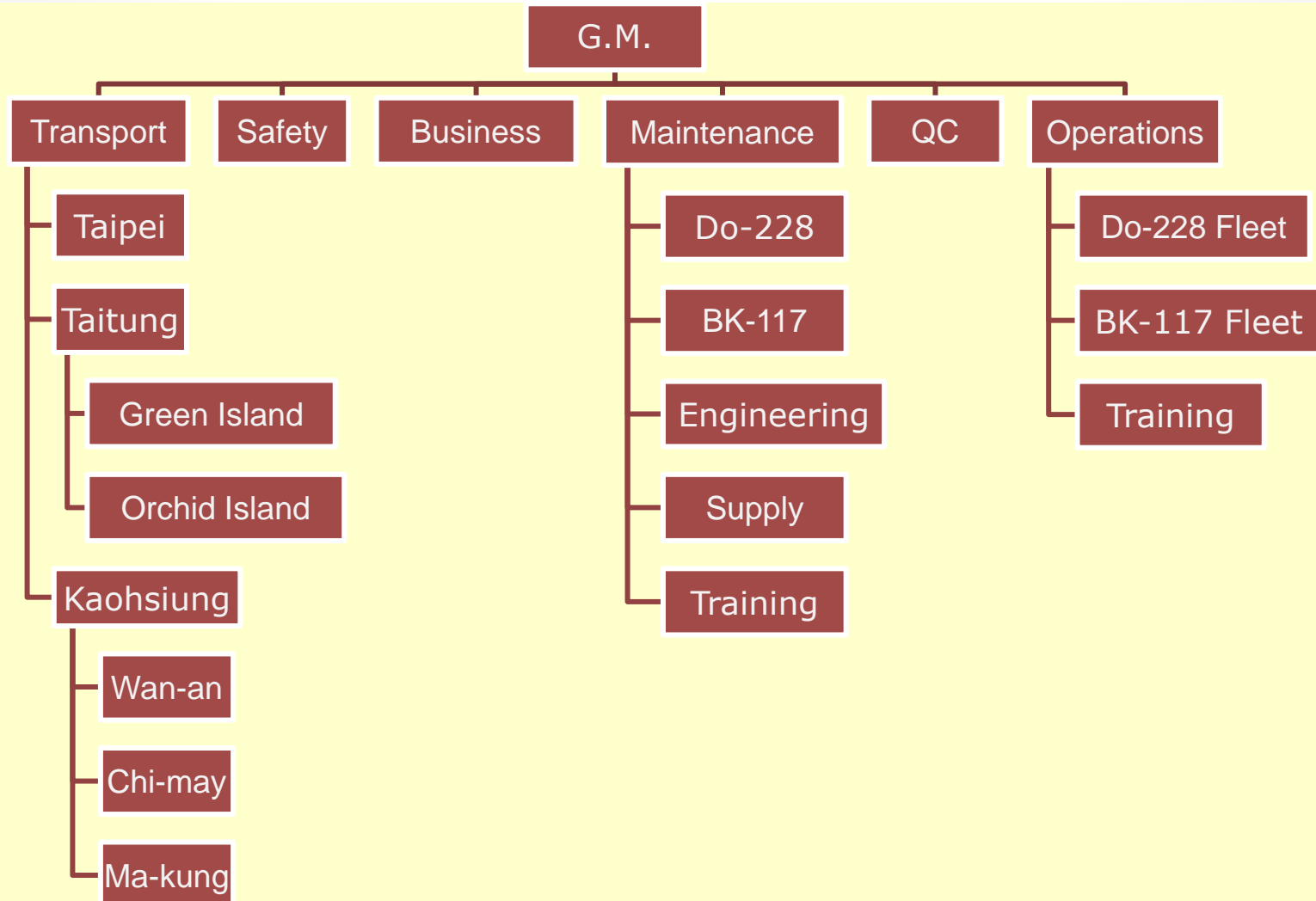
OPERATION AND BASES

Licensed Mechanics: 20, for maintaining BK-117s and Do-228s airframe, power plant, and avionics.

Operation Bases

- **Taipei (TSA):** being BK-117 operation & maintenance home base.
- **Taitung (TTT):** being Do-228 eastern Taiwan operation base and also maintenance home base.
- **Kaohsiung (KHH):** being Do-228 western Taiwan operation base.

OPERATION - ORGANIZATION



OPERATION - HELICOPTER

Licenses in General Aviation and Civil Air Transport.

General Aviation: Aerial Photography, LiDAR (Light Detection And Ranging), Sling, Emergency Medical Services (EMS), Search & Rescue, etc.

Civil Air Transport: Charter, Schedule and Un-schedule flights.



OPERATION - FIXED-WING

In 2005, four Dornier-228s were introduced for offshore islands' schedule flight.

Every week, up to 190 flights flying from Kaohsiung and Taitung to offshore islands and between islands.

Dispatching Rate and On-time Departure Rate have been over 99% since 2005.

Annual passenger serviced over 110,000.



VISION - BUSINESSES EXPANSION

Fixed-wing

- To expand to VIP charter service.
- To replace the fleet with new aircrafts.
- To expand service to other offshore islands.
- To expand to Emergency Medical Service.



Helicopter

- To expand LiDAR service abroad.
- To develop airborne geophysical survey business.



Maintenance Facility Establishment

REFERENCE – CARGO SLING

2000-2003 worked with PHI and Superior Helicopter for a hydraulic power plant construction, by using Kmax helicopter.



REFERENCE – COAST GUARD PATROL



In 2002 – 2004 contracted with Coast Guard Administration for 7/24 Law Enforcement service.



Equipment provided including 600 Lbs Rescue Hoist and Wescam FLIR for instant day/night image.

REFERENCE – OFFSHORE OIL RIG

In 1996 – 2001, contracted with CPC Corporation for offshore oil rig operation supports.

In 1998 contracted with CONOCO for offshore oil rig operation supports.

In 1999 – 2000 supported CPC Corporation Chi-An site for oil exploration.



REFERENCE – OFFSHORE CABLE LAYING PLATFORM

In 2008 contracted with Italy Saipem to provide passenger and cargo transport.



REFERENCE – OPTECH LiDAR

In May 2004, an Optech LiDAR (ALTM) installed on BK-117 to begin aerial geographic survey service.

This is to fly strictly following a guidance line shown on an aux monitor in front of the pilot for high precision flights, which Daily Air achieved 95% success rate.

Starting from July 2010, two different sets of surveying instruments are to install on the rear extended space inside the cabin to provide better protection for the equipment.



REFERENCE – EMERGENCY MEDICAL SERVICE (EMS)

Daily Air had provided Emergency Medical Service to save lives for the offshore islands,

- **Kinmen Islands**
- **Matsu Islands**
- **Penghu Islands**
- **Green Islands**
- **Orchid Islands**

Daily Air now is still providing EMS services to Kinmen and Penghu Islands.