

BLS

SIL4 system - Train Location



Sensor



Beacon

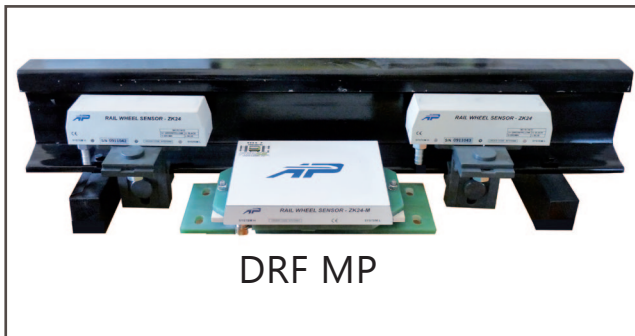
CMSAS

SIL2 Track/board communication



DRF MP

Wheel sensor dedicated to "pneumatic" train & streetcar



DRF MP



Contact@fersil.fr
www.fersil-railway.com

CLEARSY
Parc de la Duranne
320 Avenue Archimède
Les Pléiades III - BAT A
13857 Aix-en-Provence Cedex 3
FRANCE



**SAFETY
RAILWAY
SYSTEMS**

WWW.FERSIL-RAILWAY.COM



S A F E T Y RAILWAY SYSTEMS

COPP & DOF1

Device to **open and close** the Platform **screen doors**, **safety critical** SIL3 systems, currently on the **line 13 and line 1** of the **Parisian subway**



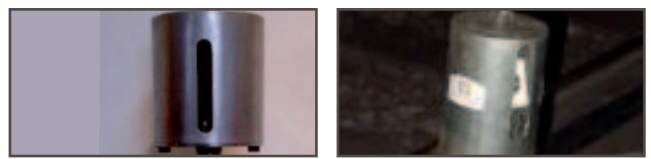
DIL

SIL3 system - Track safety monitoring



DPAS

SIL4 system - Train passage detection



DRF

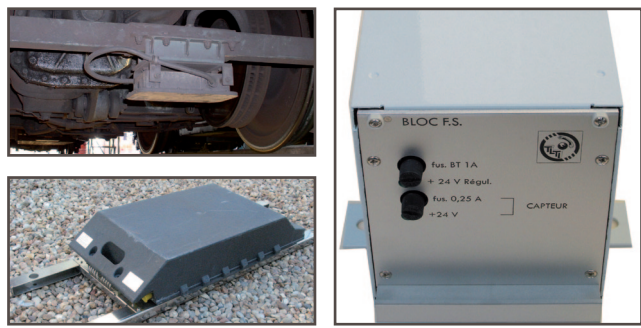
SIL4 Axle Counter / Wheel sensor



KFS



SIL2 Automatic Train Stop (**DAAT/ATS**), installed in Corsica and on Rhônexpress in Lyon



KPVA

Independent **system control** of train **overspeed**; installed in Paris subway.



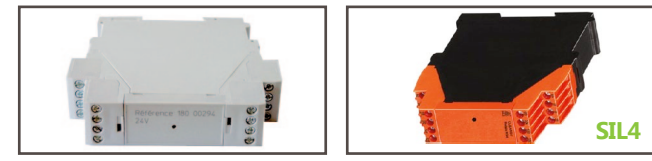
COPPILOT

Device to open and close the platform screen doors, **safety critical** **SIL3** system, currently on the line 2 and 3 of the Sao Paulo subway. Just track side system.



RS2 & RS4

Railway relays



GAPS



SIL2 system - Platform detection, STI PMR Standard, opening and closing gap filler authorization



UP25



SIL3 system - Platform detection to control train doors



SAS

Train doors audio announcement system (Embedded)

