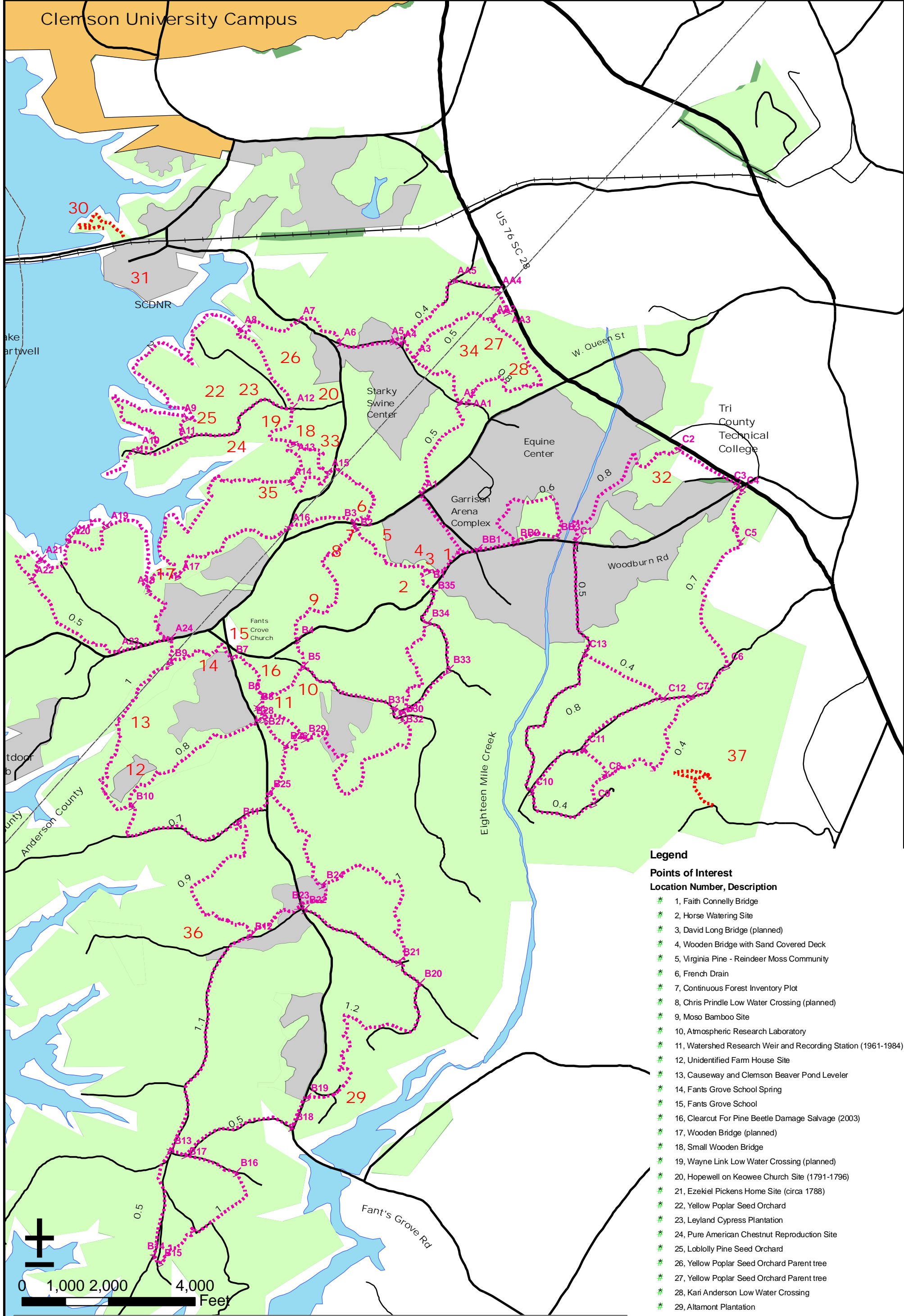


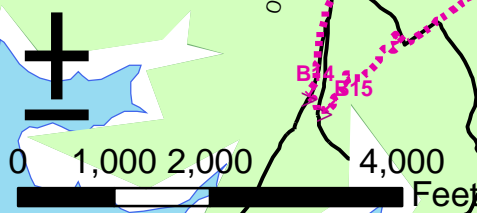
# Clemson University Campus



## Legend

### Points of Interest Location Number, Description

- # 1, Faith Connelly Bridge
- # 2, Horse Watering Site
- # 3, David Long Bridge (planned)
- # 4, Wooden Bridge with Sand Covered Deck
- # 5, Virginia Pine - Reindeer Moss Community
- # 6, French Drain
- # 7, Continuous Forest Inventory Plot
- # 8, Chris Prindle Low Water Crossing (planned)
- # 9, Moso Bamboo Site
- # 10, Atmospheric Research Laboratory
- # 11, Watershed Research Weir and Recording Station (1961-1984)
- # 12, Unidentified Farm House Site
- # 13, Causeway and Clemson Beaver Pond Leveler
- # 14, Fants Grove School Spring
- # 15, Fants Grove School
- # 16, Clearcut For Pine Beetle Damage Salvage (2003)
- # 17, Wooden Bridge (planned)
- # 18, Small Wooden Bridge
- # 19, Wayne Link Low Water Crossing (planned)
- # 20, Hopewell on Keowee Church Site (1791-1796)
- # 21, Ezekiel Pickens Home Site (circa 1788)
- # 22, Yellow Poplar Seed Orchard
- # 23, Leyland Cypress Plantation
- # 24, Pure American Chestnut Reproduction Site
- # 25, Loblolly Pine Seed Orchard
- # 26, Yellow Poplar Seed Orchard Parent tree
- # 27, Yellow Poplar Seed Orchard Parent tree
- # 28, Kari Anderson Low Water Crossing
- # 29, Altamont Plantation
- # 30, Treaty Oak Site (circa 1789)
- # 31, General Andrew Pickens Home Site (circa 1783)
- # 32, Woodburn Plantation
- # 33, Cove Hardwood Stand
- # 34, Loblolly Pine Shelterwood
- # 35, Naturally Regenerated Loblolly Pine
- # 36, Artificially Regenerated (Planted) Loblolly Pine
- # 37, Aull Natural Area



## Fants Grove Trails



K. Cox, CEF

### Trail Restrictions

#### Fants Grove Trail Use

- Foot Traffic Only
- Hike, Bike, Horse
- trail\_intersections