



Pattern Collection

Casino Royale Clutch

Designed by Universal Yarn Design Team

FINISHED MEASUREMENTS

Length (closed): 8"

Width: 9½"

MATERIALS

Rozetti Yarns *Tundra Glitz* (48% acrylic, 24% polyester, 28% glitter; 100g/47 yds) color 42111 – 1 hank (MC)

Universal Yarn *Uptown DK* (100% anti-pilling acrylic; 100g/273 yds) Color 132 Night – 1 ball (CC)

Needles: US Size 7 (4.5 mm) straight needles

Hooks: US Size G-6 (4 mm) and US Size 7 (4.5 mm) crochet hooks **or size to obtain gauge**

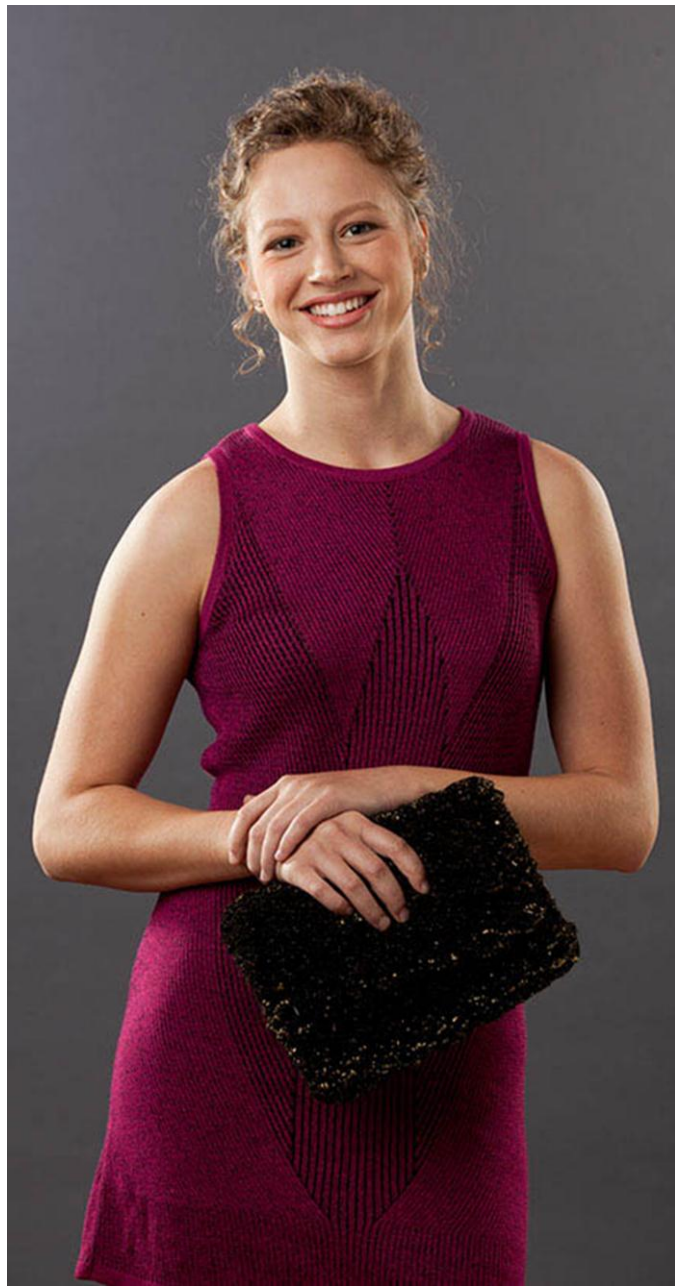
Notions: 1 – ¾" brass snap closure, 1 piece fabric stabilizer or plastic mesh approx 8¾" in width and 17" in length, straight pins, tapestry needle

GAUGE

19 dc and 11 rows = 4" with 1 strand of cc and smaller hook

14 sc and 14 rows = 4" with 2 strands of cc held tog and larger hook

Save time, check your gauge.



Ry Designs

© 2012 Distributed by Universal Yarn

www.universalyarn.com

All rights reserved.

This pattern may not be reproduced for business, trade or sale.

CLUTCH

Lining

With smaller hook and cc, ch 44.

Row 1: Dc in 4th ch from hook, dc in each st across, turn.

Row 2: Ch 3, 41 dc across – 42 dc.

Rows 3-40: Rep row 2. Fasten off last st.

Gussets (Make 2)

With cc held double and larger hook, ch 4.

Row 1: Sc in 2nd ch from hook and in each following ch, turn – 3 sc.

Row 2: Ch 1, 2 sc in first st, sc across to last st, 2 sc in last st, turn – 5 sc.

Row 3: Ch 1, sc in each st across, turn.

Row 4: Rep row 3.

Row 5: Rep row 2 – 7 sc.

Rows 6 & 7: Rep row 3.

Row 8: Rep row 2 – 9 sc.

Rows 9 & 10: Rep row 3.

Row 11: Rep row 2 – 11 sc.

Rows 12 & 13: Rep row 3.

Row 14: Rep row 2 – 13 sc.

Rows 15 & 16: Rep row 3.

Row 17: Rep row 2 – 15 sc.

Row 18: Rep row 3.

Row 19: Rep row 2 – 17 sc.

Row 20: Rep row 3. Fasten off last st.

Exterior

With MC and ndls, cast on 24 sts.

Row 1 (WS): Purl.

Row 2 (RS): Knit. Work even in St st until piece measures approx 17" in length, ending after a WS row. Bind off all sts loosely.

FINISHING

Pin stabilizer to bag exterior using straight pins and trimming stabilizer if necessary to fit exterior shape. Be sure that RS of bag exterior is facing out and that pins can be easily found once lining is sewn in place. With 1 strand of cc threaded onto tapestry ndl, sew lining to bag exterior, removing pins as you go, and sewing lining to exterior on all sides. Fold bag inwards at 6" from bottom edge and 14" from bottom edge to shape clutch, pressing firmly to create indentations. Sew gussets in place at fold 6" from bottom edge.

Attach snap lining at top edge approx 1" from edge and to bag exterior approx 3" from lower edge. Weave in all ends.

Ry Designs

© 2012 Distributed by Universal Yarn

www.universalyarn.com

All rights reserved.

This pattern may not be reproduced for business, trade or sale.