

FOUR COMPOUND EYED DIPTERA *

D Jennings
The Rock, Pelorus Sound

The light over my drawing board had a common conical shade: night flying creatures enjoy this device, running or fluttering over or through any wet ink lines. In the humid atmosphere of the Sounds, ink takes quite a time to dry when using plastic drawing sheets.

Eventually, I invested in a baked bean tin, the end and top being liberally drilled with holes. This shrouded the bulb, increasing the heat but producing a very good light. It does not decrease bulb life, warms the drawing medium and with no side light, does not attract any moths.

In late May 1984, I was drawing at about 3.30am and a minute fly flew into the hot area and alighted on my drawing. (I often work at this time of the morning). On viewing it under the stereo microscope, it appeared to be most unusual, but would keep on walking about, but a drop of immersion oil soon fixed that, and placing under the higher power microscope (x400, dark field), I was amazed. On lowering the condenser, its body became a glowing transucency. Using the camera lucida, I was able to draw an accurate outline and locate the position of all its parts.

Antenna:	Extremely complex.
Eyes:	Four, compound. No Ocellus.
Wings:	Placed where foreleg normally starts. Hairy.
Halters:	Where wing is usually placed.
Tarsus:	Delicate claws. 17 tenent hairs.
Tenent hairs:	12 on inner side. 13 on outer side. 4 on each side of coxite.

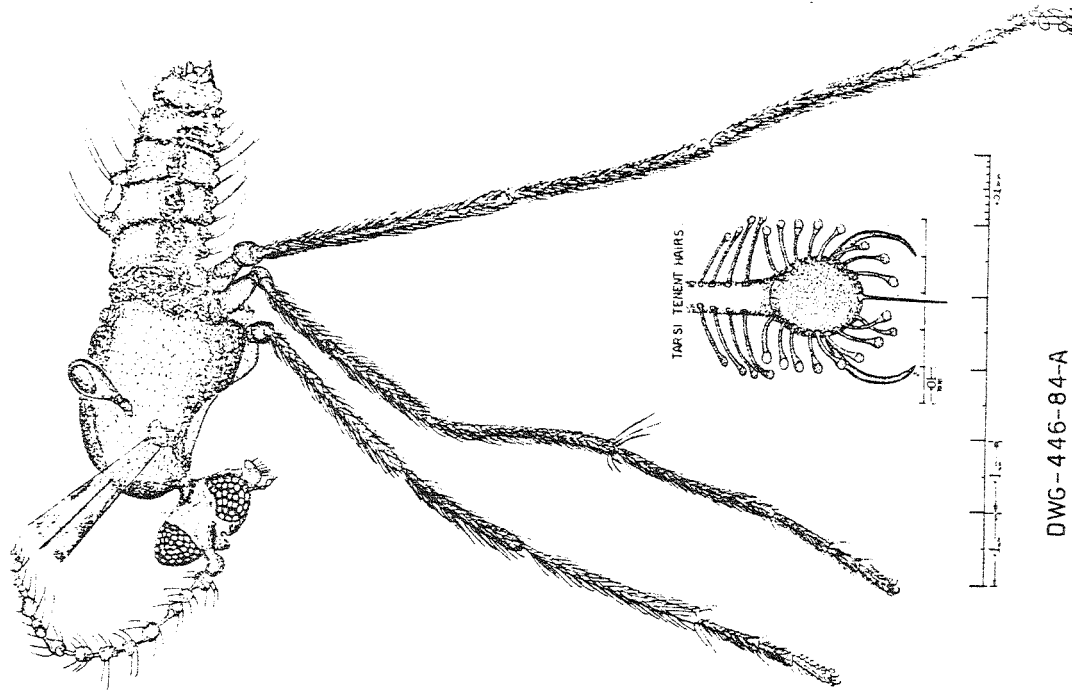
Now there are many hours of night work to try to locate another specimen.

(see drawings on next page)

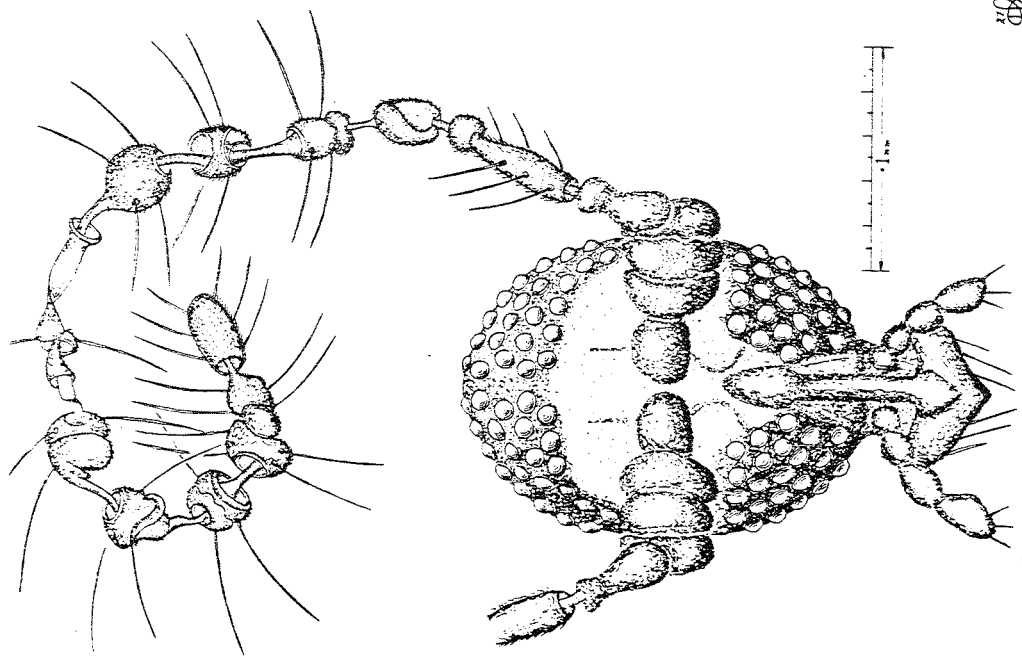
THE WETA 1985 8(2)27-29

Rob Archibald was recently awarded his Phd: Congratulations, Rob.

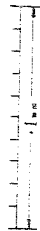
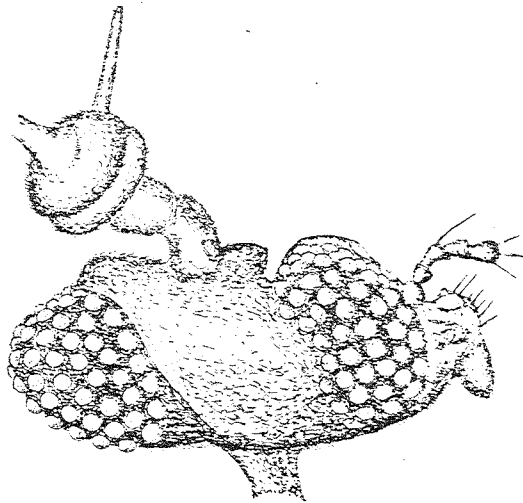
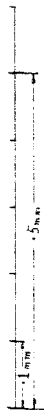
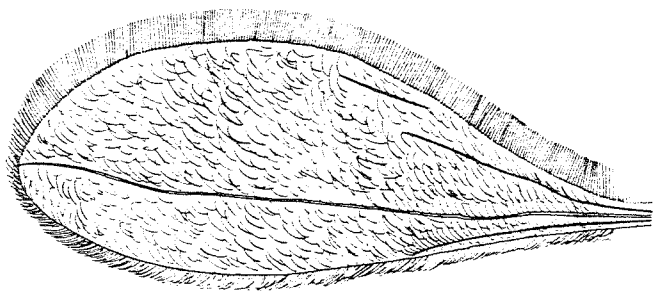
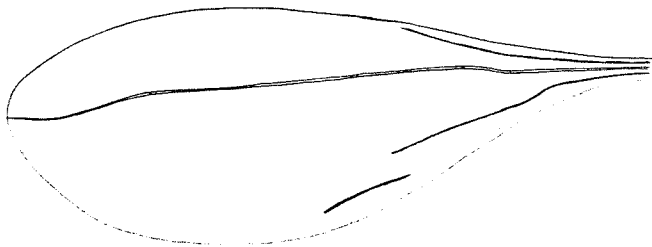
A grant of \$600 was made to the Dunedin branch to make a slide collection of the moths of Otago.



DWG-446-84-A



DWG-446-84-B



NEW ZEALAND S.D. SL

DIPTERA

Mt. Cowrie

Night light

26 May 1984.

O Jermings. Colr.

Length 7.7mm

Wing 1mm

Colour - Body, brown & black.

DWG-446-84-D.

DWG-446-84-C.

