

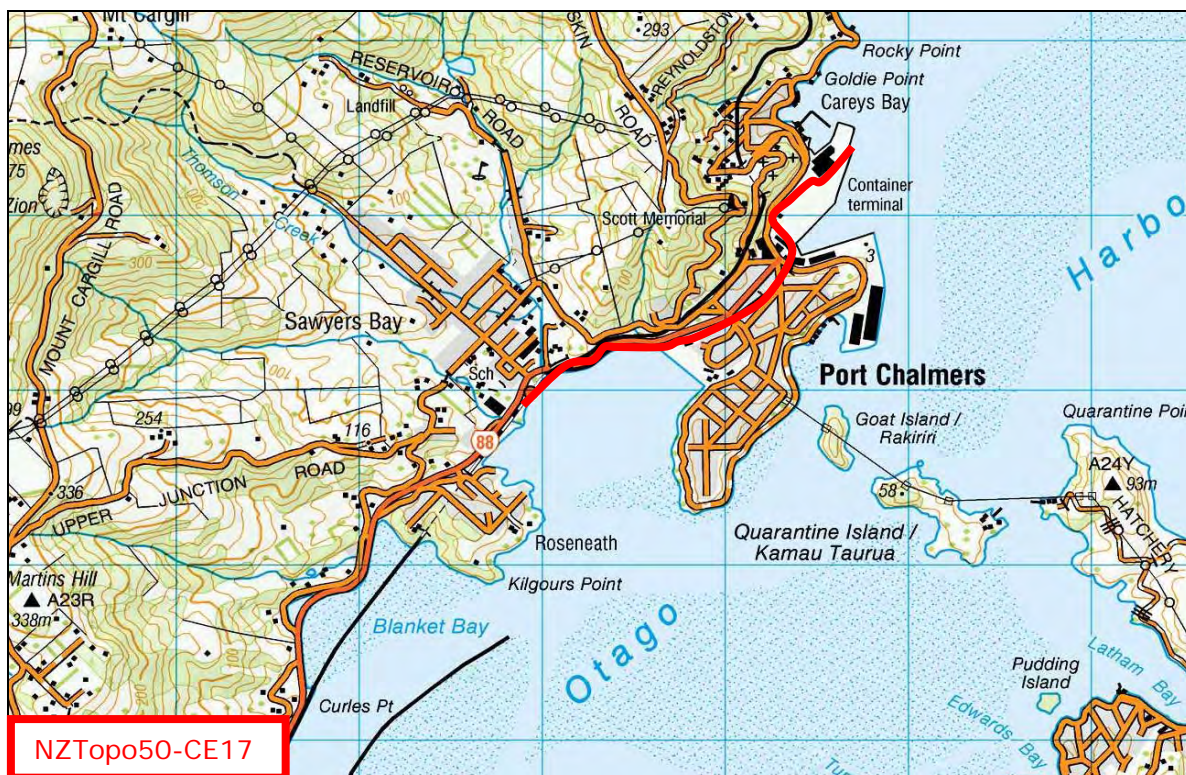
Geographic Name Proposal Report

Considered by the NZGB on 29 April 2011

Port Chalmers Branch

(alteration of existing name - Port Chalmers Industrial Line)

North-east of Dunedin



General Background

The Proposal

The proposer is KiwiRail (New Zealand Railways Corporation), who is seeking to alter the existing railway line name, **Port Chalmers Industrial Line** to **Port Chalmers Branch**.

The proposal is one of nineteen, in response to a request by the Board dated 11 February 2010 to KiwiRail to review/confirm all official railway names in the Gazetteer, for example:

- type
- whether still operational
- location details
- identifying unofficial names, etc.

As a result, KiwiRail is reviewing all of the official railway names and rationalising them against current KiwiRail operations.

KiwiRail advises that the proposed alterations to the existing names are in line with its 'Line Naming Convention Guidelines' and will bring alignment to naming branch and industrial lines throughout New Zealand.

KiwiRail is seeking to change only the generic terminology of the name, not the specific component of the name.

Location and Extent

KiwiRail advises that the line is an existing railway line. The extent of the line (NZTopo50 CE17-Dunedin, GR 133 221 to GR 157 244) has been confirmed by KiwiRail. The extent of the former line commences a further .5 km to the north, and the new northern terminus is extended along the container terminal.

A section of the line adjoins Port Chalmers Recreation Reserve, which is not a Crown Protected Area.

NZGB Archive Records

The Board's archives record that 'Port Chalmers' is named after Scotsman, Dr Thomas Chalmers (1780-1847), founder and leader of the Free Church of Scotland in New Zealand.

Research

The New Zealand Railway and Tramway Atlas¹ records, 'Suburban trains withdrawn 10 December 1979.'

The Te Ara Encyclopaedia² records, 'the locality, known to Māori as Kōpūtai, is where local Ngāi Tahu sold the Otago block to the New Zealand Company in 1844.' Reed³ further notes, 'Koputai, *lit.* kopu: full; tai: tide. A party went ashore at the little bay, lay down and went to sleep. When they awoke they discovered that their canoes had drifted away on the tide, and shouted, 'Koputai!' (High tide!).'

NZ Gazetteer of Official Geographic Names

The current name of 'Port Chalmers Industrial Line' is official by *NZ Gazette*, 1996 (94) p.2470.

Board's Policy/Guideline/Practice (from Frameworks)

The altered name proposal is associated with the adjacent satellite town name, 'Port Chalmers', and it is the Port activities here that the branch serves.

- It is not a long name, or in an abbreviated form, which is preferable for railway names from the point of view of departures and destinations, as well as operational management by KiwiRail.
- The name is not descriptive or have qualifying terminology; however, it does use the generic term 'Port'.
- The alteration is limited to the generic component of the name; ie 'Industrial Line' to 'Branch', and not the specific component. 'Port Chalmers' remains unchanged.

KiwiRail's Line Naming Convention Guidelines

Line Usage: "Terms such as 'freight' or 'industrial' must not be used as the line usage could change in the future."

Line and Branch: "Branch – a shorter length of track which is connected to a line."

Ports: "The place name must be written first followed by the 'port' suffix, except when the place name starts with 'port', (eg. Port Chalmers).

These naming conventions have never been viewed or endorsed by the Board.

Duplication

'Port Chalmers' for the associated satellite town. There are no other duplications in New Zealand.

Consultation with Iwi

The proposer has not provided evidence of consultation with local iwi. Ngāi Tahu may provide feedback at the Board meeting.

Views of the Public

KiwiRail has not provided evidence of consultation with the public. The views of the community and the wider general public can be provided through notification of the proposal.

Emergency Services

It is standard practice for railway names to adopt the same names as the features or places to which they are adjacent, or which they service. This upholds consistency and by association, may assist with emergency response. The rail operations of KiwiRail will be assisted by having consistent naming throughout its network.

¹ *New Zealand Railway and Tramway Atlas*. (1985). (3rd ed.) Exeter: The Quall Map Company.

² Te Ara: the Encyclopaedia of New Zealand, "Otago Harbour – Port Chalmers". <http://www.teara.govt.nz/en/otago-places/4> (accessed 21 February 2011).

³ Reed, A.W. (2010). *Place Names of New Zealand*. (rev. P. Dowling). North Shore: Penguin Group (NZ).