

### OTHER SERVICES

The museum store offers a variety of items perfect for that special gift. VISA and Master Card are accepted.

A picnic area is available. Vending machines and seating are available inside. Food and drink are limited to the snack bar, courtyard and picnic areas. Smoking is permitted only in outdoor areas.

Visitors requiring handicapped access are invited to use the marked parking spaces near the entrance. The Oil Field Park and exhibit center are fully accessible.

### MEMBERSHIP

We invite memberships from individuals, families, businesses, and organizations. Members receive many benefits including the newsletter and invitations to exhibit previews, travel tours and other special events.

Many interesting and fulfilling volunteer opportunities are offered. We invite you to select an area that

scheduled each day. Museum and Arkansas State Park interpretive events are scheduled throughout the year. **Teachers** ♦ A guide is available to assist educators in their preparation of graded, curriculum-related programs, offering educational resources for Arkansas history, geology, ecology, and others.

Contact the Education Department for upcoming events, programs, speakers, and to schedule groups.

**Research and Collections** ♦ Transcripts of audio and/or video oral histories of people who experienced the south Arkansas oil boom, a special collection of library, archival and photographic materials on the history of the region, and computerized data of Arkansas's petroleum and brine development are available to historians, researchers and members of the oil and brine industries.

A 10,800-square foot facility contains preservation areas, collection storage, laboratories, and curatorial offices. Strict professional methodology ensures that collections are preserved for future generations. Tours of this facility are available only by advance reservation.



matches your interest, skills, and schedule.

### HOURS OF OPERATION

Monday - Saturday: 8 a.m. to 5 p.m.

Sunday: 1 p.m. to 5 p.m.

Closed Thanksgiving Day, Christmas Eve, Christmas Day and New Year's Day.

Admission is free.

### LOCATION

The Museum is on State Highway 7, one mile south of Smackover and 10 miles north of El Dorado, Arkansas.

**For more information or to schedule your group, contact:**

**Arkansas Museum of Natural Resources**

**3853 Smackover Highway**

**P.O. Box 7**

**Smackover, AR 71762**

**Telephone: (870) 725-2877**

**Fax: (870) 725-2161**

**e-mail: [museumnaturalresources@arkansas.com](mailto:museumnaturalresources@arkansas.com)**



For information on Arkansas' other State Parks and Museums contact:

Arkansas State Parks

One Capitol Mall, 4A-900

Little Rock, AR 72201

Telephone: (501) 682-1191

[www.ArkansasStateParks.com](http://www.ArkansasStateParks.com)



As a part of its conservation mission, Arkansas State Parks has printed this brochure on recycled paper. All park services are provided on a nondiscriminatory basis. Arkansas State Parks is an Equal Opportunity Employer.

# ARKANSAS MUSEUM OF NATURAL RESOURCES



ARKANSAS  
DEPARTMENT OF PARKS & TOURISM



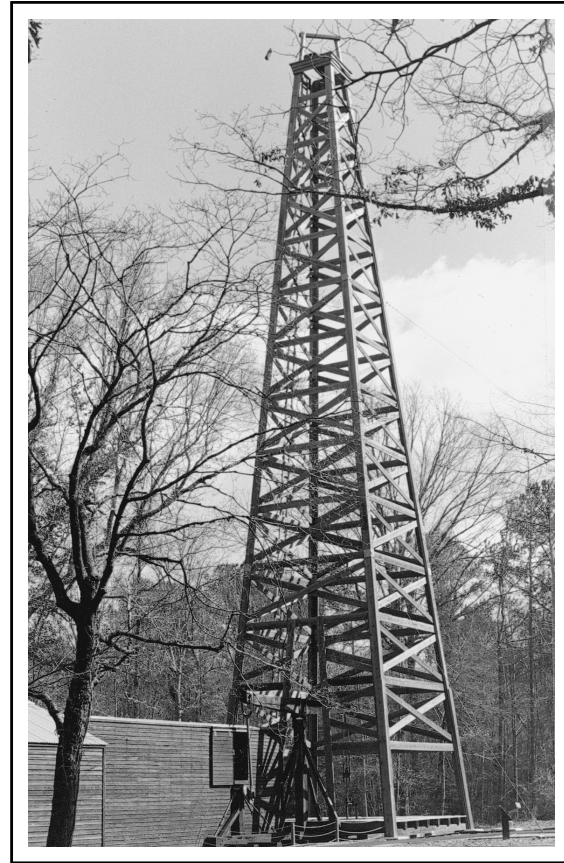
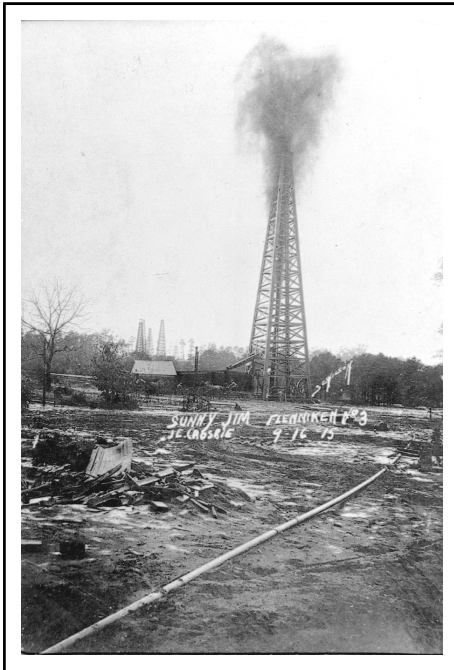
## ARKANSAS MUSEUM OF NATURAL RESOURCES

The Arkansas Museum of Natural Resources is one mile south of the oil-rich town of Smackover, in the heart of the Arkansas oil fields. Surrounded by twenty acres of south Arkansas woodlands, the Museum collects, interprets and exhibits knowledge of Arkansas's natural resources, with special reference to the story of petroleum and brine recovered for bromine extraction.

### AN EXCITING STORY

Although these oil fields no longer play a leading role in our nation's destiny, at one time the dramatic events of the Arkansas oil boom focused the attention and the dreams of the nation on south Arkansas.

Prior to the discovery of oil in 1921, the area's economic future was linked to declining cotton and timber markets. Prospects were bleak. No one anticipated one of the wildest oil booms in the nation's history.



The Busey No. 1 well near El Dorado blew-in with a gusty fury on January 10, 1921. It was Arkansas's discovery well, and things would never be the same. Determined geologists explored creeks, noted elevations, and read the earth's outer crust. The serene pine forests were quickly consumed by the chaotic presence of the drill bit.

The search for oil was soon directed north towards the village of Smackover and the nearby Ouachita River fault line. On July 29, 1922, the Richardson No. 1 brought in the newest discovery. Within months, Smackover, a village of less than 100 people, boomed to over 25,000 within months. Within a year, the forty square-mile Smackover Field was producing oil in abundance. For five months in 1925, the Smackover Field ranked first among the nation's oil fields.

Though the fury of the boom is over, the south Arkansas oil fields cover a ten county area and are still producing.

Bromine extraction followed the oil discovery. Columbia and Union counties sit on one of the largest brine reserves in the world. Albermarle in Magnolia and Great Lakes Chemical in El Dorado play an international role in the commercialization of bromine and its applications.

Dedicated to the pioneers of south Arkansas's oil and brine industries, the Museum is funded by a tax on the state's oil production and bromine extraction.

### THE MUSEUM

The Museum has a 25,000-square foot exhibit center, an education center, a collection management facility, a Woodland Walk, and the Oil Field Park. The Exhibition Center exhibits include:

- ◆ **The Earth Globe** - Experience a walk through the center of the earth and see where oil and bromine are located throughout the world.
- ◆ **The Core Shaft** - Walk through a simulated core shaft and see samples of actual formations found in south Arkansas.
- ◆ **Undersea Diorama** - Take a trip 200 million years back in time to the Jurassic Period. Ride through the ocean and learn how oil is formed on the ocean's floor.

◆ **Industrial Revolution** - Watch as oil sets the nation's industrial wheels in motion during the 19th century and step onto an oil-soaked rig floor as a gusher is being brought under control.

◆ **Boom Town Street** - Take a stroll through Smackover's muddy boom town street and visit a restaurant, jail, supply store, and movie theater.

◆ **The Circus Truck** - Learn about one of south Arkansas's most popular legends Rhene Miller Meyer, the famous "Goat Woman." See what entertainment was like in a boom town.

◆ **Oil Field Park** - Follow the Woodland Walk and view full-size, operating examples of derricks and equipment used from the 1920s to the modern era.

### MUSEUM PROGRAMS

**Education and Interpretation** ◆ Films, lectures, field trips, demonstrations, pre-school visits, and adult programs and workshops are offered. Various films are

