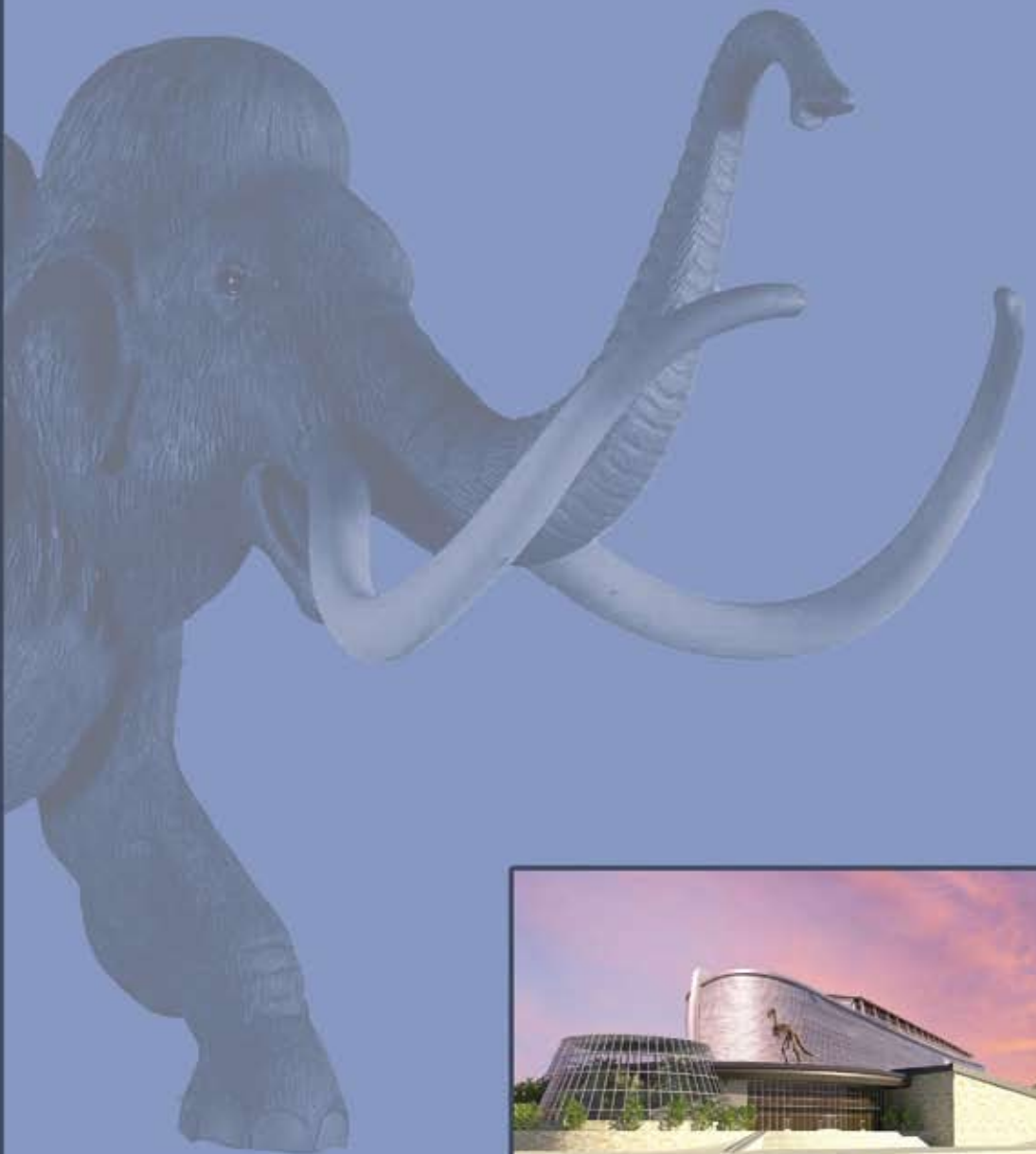


NORTHWEST SCIENCE



MUSEUM



PROSPECTUS
NORTHWEST SCIENCE MUSEUM

NORTHWEST SCIENCE MUSEUM

General Business Plan

1. Executive Summary

Recently, a board of directors came together for the purpose of developing a plan for a museum. The directors worked together to create a mission, vision, and strategic plan intent on guiding the organization from the beginning, and into the future. The directors intend the Northwest Science Museum to be a world class facility for the public to visit and discover scientific truth.

The Board of Directors, hereinafter referred to as Directors, created a **Strategic Plan**, anchored by a comprehensive **Master Facilities Plan**, to define specific projects that will fulfill our commitment to making Northwest Science Museum one of the best regional nature and science museums in the world.

Northwest Science Museum will present a “Natural History” museum from both Biblical and Naturalistic (evolutionary) points of view. The Museum will display similar exhibits as other well known natural history museums throughout the world. With an evolutionary and Biblical explanation for the exhibits, visitors can then make an informed decision about origins. Providing relevant and current creation science information to the public is what Northwest Science Museum is all about. The Museum will create permanent exhibits that will educate people of all ages about the most exciting emerging creation science in an accessible and interactive manner.

Northwest Science Museum will be located in the Treasure Valley in Idaho. Boise, Idaho’s state capital and the third largest city in the Northwest, is located within the Treasure Valley. Boise is the gateway to the Pacific Northwest allowing market access to 66 million consumers within a 750 mile radius.

The Directors are committed to constructing a **safe and sustainable building**. The ideal design for the Museum will necessitate a 300,000 to 450,000 square foot building, built to 21st-century standards. Security and critical life safety systems will be installed. Throughout this entire process, the Museum will set

an example of environmental stewardship by developing a facility that conserves energy.

Northwest Science Museum exhibits will include: **Wildlife Exhibit Wing** that will be comprised of North American animals, birds of the world, unique world wildlife, and the uniqueness of life; **History of Life Exhibit Wing** will consist of dinosaurs, ice-age animals, miscellaneous fossils, “evolution” of man, and “missing links”; **Earth Science Exhibit Wing** will feature Idaho gems and minerals, world gems and minerals, petrified wood, the Genesis Flood, and astronomy. **Other Exhibits** will include OOPARTS, dating techniques, fruits of the worldviews, and a traveling exhibit hall. The Museum will also include **Other Features** such as: a planetarium, a chapel, a lecture hall, a bookstore/gift shop, a garden café/coffee shop, and an herbarium picnic area.

2. Location & Demographics

Treasure Valley is located in southwest Idaho 500 miles from Seattle, Washington; 430 miles from the seaport terminal of Portland, Oregon; 384 miles south of Spokane, Washington; and 360 miles northwest of Salt Lake City, Utah. Boise, as the hub of the Treasure Valley, serves as a conduit to provide highway, air, and rail access to the Northwest, allowing market access to 66 million consumers within a 750 mile radius.

Treasure Valley residents have immediate access to numerous mountains, rivers, lakes, deserts, and spectacular canyon environments. Immediately north of downtown Boise are the Boise Front Foothills; it offers an elaborate trail system for hiking and mountain biking. The Boise River, which runs through the middle of the City, is a popular destination for swimming and rafting. Skiing, snowmobiling, kayaking, and fly fishing are just a few more outdoor recreational activities that can be enjoyed right outside Treasure Valley’s backyard.

According to Idaho Commerce and Labor statistics, Idaho is number one in the nation for patents per capita, and ranked fifth in the creation of new companies. Combining these two statistics makes it easy to see that technology, innovative thinking, and an entrepreneurial spirit have helped lead Treasure Valley to experience exponential growth and development in business and technology.

There is a commonality between the greater Boise area and the world of technology; in a word, growth. Technology is ever-changing, and with this change comes the demand for businesses that focus on science and technology in Treasure Valley. Whether you are an established business looking to expand, or an entrepreneur looking to begin, Treasure Valley offers a wealth of opportunity. According to the latest Idaho Commerce and Labor statistics, technology products accounted for 72 percent of Idaho's total exports, there are more than 4,100 high-tech firms in Idaho, and more than 55,000 Idahoans work in high-tech industries.

With this in mind, it is not surprising that there are always events being held by organizations, small and large, independent or otherwise, that provide enormous opportunities to business leaders of Treasure Valley as well as those looking to move in and become a part of the Valley's growth. Additionally, there are several business resources to help companies in their efforts to adjust to new surroundings as quickly as possible and take advantage of all Treasure Valley has to offer.

Transportation

The major Interstate serving Treasure Valley is I-84, with I-184 branching through downtown Boise. Other highways that are easily accessed from Treasure Valley include federal highways 20, 26, 30, and 95, and state highways 21, 44, and 55. Several freight hauling and freight forwarding companies serve Treasure Valley.

Public bus transportation throughout Treasure Valley is provided by Valley Ride, while van and car pooling services are offered by Commuteride. There is also a network of bike paths throughout the city and surrounding region for those who prefer to walk or ride their bikes to work.

Boise Airport Access

The newly renovated Boise Airport, which serves more than three million travelers a year, is less than five miles from downtown. Boise is served by seven airlines which offer daily, non-stop flights to 22 cities, including Los Angeles, San Francisco, Chicago, Minneapolis, Phoenix, Portland, Seattle, and Las Vegas.

In addition to being a commercial and general aviation airport, Boise Airport is used by Idaho Air National Guard. The United States Forest Service, Bureau of Land Management, and National Interagency Fire Center (NIFC) also use Boise Airport as a base for aerial firefighting air tankers during the wildfire season. In addition, Mountain Home Air Force Base, home of The 366th Fighter Wing, is located about 55 miles to the southeast.

Rail Access

Idaho Northern & Pacific Railroad (INPR) provides freight service over four former Union Pacific (UP) branch lines in Southwestern Idaho and Northeastern Oregon. The Oregon Division runs from a UP connection at La Grande to Elgin, Oregon (20.6 miles). The Idaho Division runs from a UP connection at Payette to Cascade, Idaho (100.9 miles). INPR also leases and operates from a connection with UP in Nampa, Idaho, to The Hillcrest Switching Station near Boise Airport, and from Caldwell to Wilder, Idaho.

Currently, studies are underway to develop options for Amtrak, a high speed rail or other train schedules for connecting east and west within Treasure Valley.

Business Climate

Idaho is known for its pro-business climate and low cost of doing business. The State offers a flexible worker training program, a number of tax credits and exemptions, and grant programs for some communities. What's more, the State offers incentive packages for businesses wanting to invest in corporate or regional headquarters in Treasure Valley.

The regulatory environment in Treasure Valley is highly pro-business. Headquartered here are Albertsons, a SUPERVALU company, Idaho Power, Micron Technology, Simplot, Amalgamated Sugar Company, WinCo Foods, Boise, Inc., Boise Cascade, LLC, and URS Corporation. Weyerhaeuser has a large campus and technical center in the Valley, and Hewlett Packard, one of the largest private employers in the area, second to Micron, has a large Boise campus specializing in printers and scanners.

Technology investment is increasingly important to the City, which is also home to high-tech employers including Sybase and Microsoft. Boise has thriving in-bound technical call centers like Qwest, T-Mobile, WDSGlobal,

and DirecTV, all of which are major employers in the Boise call-center industry. In addition, Treasure Valley is home to a number of innovative, high-tech companies including: Mobile Dataforce, Kount, Tsheets, M2E Power, Ugobe, Sky Detective, Booklamp, and Inovus Solar.

Business Incentives

The overall cost of doing business in Treasure Valley is nearly one third lower than it is in California or Washington. This is due in part to low workers' compensation insurance premiums, competitive natural gas prices, and low electricity costs with hydropower as its base.

Together with some of the lowest overall costs of doing business in the country, Idaho has a variety of incentive programs designed to assist business start-up, business expansion, and business productivity. With financial incentives, business tax credits, and worker training programs, Idaho's incentives are designed to enhance overall profitability and make doing business from Idaho very attractive. In addition, Idaho is near the top in virtually all indicators of business and economic vitality.

Education

More than 110,000 college graduates reside in Treasure Valley. A number of colleges and universities in the region are cultivating an educated and highly-skilled workforce. More than 75 percent of Boise State University graduates and 50 percent of College of Idaho graduates continue to live and work in Treasure Valley.

Other colleges in the region that are turning out educated, skilled workers include Northwest Nazarene University, George Fox University, College of Western Idaho, Treasure Valley Community College, Stevens-Henager College, Apollo College, University of Phoenix, Brown Mackie College, and BYU-Idaho University. In addition, Treasure Valley houses satellite campuses for Idaho State University and University of Idaho.

The Treasure Valley also has excellent K-12 schools in several family-oriented communities; such as public, Christian, charters, and home schools.

Workforce

Boise, and its surrounding metropolitan area, has seen dramatic growth during the last decade. Today, the Valley is home to a trained, skilled workforce of 279,500. Nearly 110,000 of the workforce pool are workers with college degrees.

Labor Market Data for the Treasure Valley Metro Statistical Area (MSA) includes Ada, Boise, Canyon, Elmore, Gem, and Owyhee Counties. This covers an area of almost 15,000 square miles.

Key statistics include:

Total Population in the Boise/Nampa MSA: 632,000.

Total Workforce: 279,500.

Workforce within a 45-minute draw area: 330,000.

Average Age: 33.1.

Quality of workforce—stable, enthusiastic, loyal.

Average Commute Time: 18 minutes.

Boise MSA* Information:

Population within a 45-minute draw area: 615,528.

Total Workforce: 297,755.

Workforce within a 45-minute draw area: 325,794.

Average Commute Time: 18.0 minutes.

*Includes Ada, Boise, Canyon, Gem, and Owyhee Counties

	1990 Census	2000 Census	2005 Estimate	2010 Projection	Percent Change (1990 to 2000)	Percent Change (2005 to 2010)
Boise City						
Total Population	143,497	185,787	205,339	227,461	29.5%	10.8%
Population Density (Pop/Sq Mi)**	3,099.3	2,912.9	3,219.5	3,566.3	-6.0%	10.8%
Total Households	56,645	74,438	83,521	93,263	31.4%	11.7%
Boise MSA*						
Total Population	319,593	464,840	544,352	628,317	45.4%	15.4%
Population Density (Pop/Sq Mi)**	6,902.7	7,288.2	8,534.8	9,851.3	5.6%	15.4%
Total Households	117,360	170,291	200,852	232,475	45.1%	15.7%
Treasure Valley						
Total Population	365,785	524,525	606,241	691,854	43.4%	14.1%
Population Density (Pop/Sq Mi)**	7,900.3	8,224.0	9,505.2	10,847.5	4.1%	14.1%
Total Households	133,793	190,516	221,971	254,209	42.4%	14.5%

*Includes Ada, Boise, Canyon, Gem, and Owyhee Counties

**The land area of Boise changed from 48.3 square miles in 1990 to 63.78 square miles in 2000. The 2000 figure was used in the 2005 estimate and 2010 projection.

Source: ESRI Business Services Data, June 2006

Economic Impact

Economic impact analysis predicts the economic effects upon a regional or state economy of a new business location or a new project venture occurring in the state or regional economy. We believe that Northwest Science Museum will have a substantial impact on the economic climate of Treasure Valley and the State of Idaho. An economic impact analysis has not been conducted at present. However, general comparisons can be made.

Recently a large creation museum was built and opened in 2007. The museum is located in rural Northern Kentucky, a 30-minute drive south of Cincinnati, Ohio. The museum is within a day's drive of about two-thirds of the U.S. population. The state-of-the-art 70,000 square foot museum brings the pages of the Bible to life, casting its characters and animals in dynamic form, and placing them in familiar settings. The museum has attracted nearly 900,000 visitors in less than three years and as many as 4,000 visitors per day. This is far more than the 250,000 visitors annually that organizers predicted. It drew more than 550,000 visitors in the first 15 1/2 months alone. The museum has already brought in nine million dollars in ticket sales alone. An economic impact study done by the museum estimated that the museum also brings \$65 million a year to the region. (Creation Museum Sees Controversy, Success *Museum Teaches Creationism Instead Of Evolution* POSTED: 4:46 pm EST November 19, 2009: <http://www.wlwt.com/family/21667399/detail.html>).

Another creation museum opened this year in Eastern Montana. This museum is a 20,000 square foot building. It had over 7,000 visitors in 2009 in spite of being located in a sparsely populated area.

The ideal design for Northwest Science Museum will necessitate a 300,000 to 450,000 square foot building. It will possess the first full size Noah's Ark in the United States, featuring world class exhibits, a planetarium, a chapel, a lecture hall, a bookstore/gift shop, a garden café/coffee shop, and an herbarium picnic area. The Museum will be located with access to 66 million potential consumers within a 750 mile radius.

Using the 2009 U.S. Government's per diem rate for Boise, Idaho, (\$136/day) using a conservative visitor estimate of 100,000 visitors per year, and using only one and a half days per visitor, the economic impact to Treasure Valley would be approximately \$20.4 million annually.

3. Board of Directors

BIOGRAPHICAL SKETCH OF DOUGLAS J. BENNETT

Douglas J. Bennett - Founder and Executive Director

Doug was raised in a Christian home on a farm in Southern Idaho. He accepted Jesus as his Lord and Savior at an early age. Doug also developed a love of science at an early age. By age 14 he was a lecturer at Herrett's Museum and Planetarium. He built his own telescope at age 16, worked for a summer at Lubbock Lake Project archeological dig in Texas at age 18, and over the years has acquired an extensive rock and fossil collection.

Doug attended Boise State University where he received bachelor of science degrees in Geology (1982) and Earth Science Education (1990). He also received a master's degree in Engineering Geology in 1996.

Doug started his career as a geologist by hiking the mountains and deserts of the Pacific Northwest mapping and sampling the rocks for precious metal deposits. For the last 18 years, he has been employed by the U.S. Bureau of Reclamation as an engineering geologist in the Pacific Northwest Region.

Doug's responsibilities as a geologist with the Bureau of Reclamation have involved a wide range of activities and assignments in engineering geology related to safety of dams, construction of dams and structures, and operation and maintenance of structures. He has performed surface and subsurface geotechnical studies and exploration programs utilizing diamond drill, power-auger, test pits, tunnels, and other processes to secure data for seismotectonic, ground-water, and other special studies of dams, reservoirs, canals, tunnels, spillways, power plants, and related structures. He has conducted detailed geotechnical studies of dam foundations exposed during construction projects, including foundation preparation, compaction and dynamic consolidation, and installation of seepage and/or drain systems. One of the more enjoyable aspects of his duties has been conducting detailed geotechnical studies of both active and stable landslides.

All of Doug's work has required the preparation of technically comprehensive geotechnical reports to describe geological conditions and interpretations of those conditions for engineering purposes, and illustrating them with maps, cross sections, photographs, narratives, or other suitable means.

Doug is also a member of the National Association of Engineering Geologists, a licensed professional geologist, and a registered engineering geologist. He has spoken nationally and internationally in the engineering geology field with trips to Japan and South Africa.

Doug teaches classes in Creation/Evolution at his home church (Calvary Chapel) in Boise, Idaho where he has attended for the last 25 years. He has spoken nationally and internationally on creation geology with mission trips to Haiti, Mexico, England, and Italy. He also speaks at area schools, churches, and family camps on the topics of origins, rocks, fossils, and dinosaurs.

Doug is a board member of Foundations in Genesis of Idaho/Oregon (FIGI), and serves as treasurer for the organization. He also co-leads field trips for FIGI that cover the Western United States.

BIOGRAPHICAL SKETCH OF BRENT H. CARTER

Brent Carter, Founder

Brent's spiritual journey started with the Lord Jesus Christ during college and has been an exciting "rest/run" ever since.

Brent graduated from Oregon State University with a bachelor of science in Geology and minor in Civil Engineering. He began his professional career with the U.S. Bureau of Reclamation soon after graduation and continued in successively responsible positions for 42 years, retiring as Chief Geologist of the Pacific Northwest Region. Work experience was much diversified in reconnaissance, planning, pre-construction, construction, operations and maintenance, and safety of dams' investigations on a variety of projects and structures throughout the Western States and Alaska. His responsibilities included complex geotechnical, exploration, instrumentation, seismotectonic, ground water, and hazardous waste programs of field investigations requiring technical preliminary to final reports for government, state, and private organizations.

Brent was selected as one of four initial members of the first engineering-oriented underwater inspection teams in Reclamation (also the USA). For over 38 years he participated in and directed routine to very problem specific underwater studies of dams and their appurtenances, utilizing Commercial Diving Gear, Remotely Operated Vehicles (ROV), and SCUBA, throughout the contiguous United States and Alaska. He was Reclamation Diving Officer for 15 years.

Brent has had the opportunity to give numerous technical presentations on varied geotechnical and structural underwater inspection/documentation topics to professional organizations throughout the United States.

Currently Brent serves as Chairman of two non-profit organizations, Foundations in Genesis of Idaho/Oregon (FIGI), and Child Evangelism Fellowship (CEF) of Idaho. He is a consulting engineering geologist and diving specialist for underwater investigations of dams, a licensed geologist, engineering geologist, and licensed commercial diver.

BIOGRAPHICAL SKETCH OF RICK DEIGHTON

Rick Deighton, Founder

Rick accepted the Lord as Savior when 12 years old, constantly challenging himself to increase his spiritual growth with Bible study and sharing his faith with others. He graduated from Boise Bible College, Boise, Idaho, with a bachelor of arts degree and then took one year of graduate studies at Ozark Christian College, focusing on missions training. He ministered for four years at Norvale Park Church (now Garden Way Church) in Eugene, Oregon, before serving in Germany as a missionary for seven years.

Rick is a bi-vocational missionary who works a thriving lighting business between frequent mission trips to former Soviet Union nations. He co-directs with his wife, Della, their business and Overseas Outreach. They are coworkers as Northwest representatives of Peace on Earth Ministries, and he is an associate evangelist with White Fields Overseas Evangelism.

Rick has been involved in Family Life Seminars, Creation Evangelism Seminars, and has taught in universities, colleges, churches, and at a unique conference that is designed to draw in atheists and unbelievers, and to influence people who are in positions of influencing others. He has authored booklets, articles, and tracts that have been printed in English, German, Korean, and Russian. His latest book, "Ready to Give an Answer," is available in both English and Russian.

In all of his work, Rick cleverly exposes the pseudoscience of evolution with simple logic, philosophy, and the Bible. Biblical creation science evidences abound in his writing and sharing, especially for the purpose to reach the academic community.

BIOGRAPHICAL SKETCH OF STAN G. LUTZ

Stan G. Lutz, Founder – Lead on Creative Team

Stan has a diverse background in practical, scientific endeavors from early childhood. He was raised on a farm, and owned his own, where he raised hay, feed grains, and pigs, immediately after graduation from high school. His walk with the Lord began in his early youth. At age 13 he began questioning and trying to reconcile science and the Bible. Through in-depth studies he soon learned the Bible and science are entirely compatible, and a life-long thirst for Biblical creation science was initiated. Farming continued for 28 years before a disabling back injury in late 1999, which forced him, under OWCP opportunities, to pursue schooling in the field of Medical Assistance opportunities.

Besides his multi-faceted education in farming, Stan completed two years of schooling in Medical Assisting at Yakima Valley Community College, Yakima, Washington, and numerous course studies in creation science topics from Creation Science Evangelism Institute in Pensacola, Florida. He has completed overseas missionary/expedition studies in Siberia, Russia, and Peru, South America, teaching, preaching, and learning the evidence of creation science in those respective areas of the world.

Stan's experiences within the continental United States are quite varied in preparation for museum curator oversight; such as, working at the Mt. Blanco Fossil Museum, Crosbyton, Texas, and at the Creation Evidence Museum, Glen Rose, Texas, assisting in fossil excavations, preparation of fossils, documentation of finds by video and mapping, making detailed fossil replicas, studying the routes of both the Missoula and Bonneville Floods, and studying the Mount St. Helens terrain from the time of eruption in 1980 to the present.

For the last 10 years Stan has devoted time to teaching Biblical creation science in churches, Christian schools, leading creation seminars and bus tours. He and his wife Bonnie currently coordinate the work of The Fossils and Floods, Facts and Fables Ministry.

Creative Team

The Directors have determined that creative individuals and teams who desire to cooperate with us in this massive project to impact our culture will be beneficial. Creative teams range from law and tax issues to graphic design and building issues.

Consultants

A consultant is usually an expert or a professional in a specific field and has a wide knowledge of the subject matter. These consultants usually work for a private firm or are self-employed, and engage with multiple and changing clients. By using consultants, the Directors and Museum have access to deeper levels of expertise than would be feasible for us to have in-house.

A number of professionals, who have provided advice in particular areas of expertise, such as management, accounting, engineering, sound system design, graphic design, law, and marketing, have been contacted to aid in the Museum project. These, and others, will be consultants to the Directors and the Museum.

Prayer Coordinator and Team

For any plan of ours to be fruitful, it must be set on a foundation of prayer. To see fruit from this idea of building a creation museum, we must begin with prayer and fasting. The "Museum Prayer Team" is committed to this. Our Prayer Coordinator sends out an update periodically on prayer requests for the Directors and the Museum, and a brief progress report.

Prayer Team members are asked to join the Prayer Team for one year. By committing to this they are promising to pray at least once a week for one year, and to fast once a month for one year for the Museum.

Editorial Staff

Currently, volunteers comprise our editorial staff. They are enthusiastic and willing to help by recording the minutes of our meetings and various other assigned tasks.

4. Timeline

Key Accomplishments with dates

June 2008 – Initial plan developed.

August 2008 – Board of Directors formed.

November 2008 – First invited meeting.

May 2009 – Website established

October 2009 – Stan and Bonnie moved to Nampa, Idaho.

March 2010 – Prospectus completed.

June 2011 – Opened at temporary location.

5. Mission Statement

The Museum will be devoted to explaining origins, history, and our present world as revealed by scientific discovery. The Directors believe that the numerous evidences around us interpreted through the worldview of Biblical truth yield a much better explanation to our origins and history of the earth, solar system, and universe than the alternative evolutionary view.

This approach will lead people to a better understanding of God by examining His creation. The Museum will show that Biblical creation science can explain the evidences we see in the world around us, and it is not just religion. Evolutionism is a vital doctrine of the religion of humanism, as recognized by the U.S. Government; therefore, it is just as religious as creationism. They are opposite and competing worldviews. The Directors want to show where scientific evidence leads.

This approach will strengthen the visitor's faith in God and the Bible. It will give the visitor the information they need to trust the Bible and what it says about the creation of the universe, so they can know that ***"In the beginning, God created the heavens and the earth."*** Genesis 1:1.

One of the basic goals of the Museum is to distribute the abundance of scientific evidence that confirms the Biblical account of creation and young earth history. This goal makes available the resources necessary for an individual to continue to study Biblical creation science on his/her own so he/she will be well versed and can give an answer to anyone who asks about origins.

Goals

Short term goals –

- A. Develop support base.
- B. Acquire funding.
- C. Acquire land.
- D. Acquire or construct a building.
- E. Build laboratory & exhibits.
- F. Acquire and train staff.

Long term goals –

- A. To become self sustaining.
- B. To provide an educational outreach training.
- C. To become one of the truly scientifically oriented museums in the world.
- D. To become one of the powerfully impacting influences on our culture to open minds to the Way, the Truth, and the Life.

6. Site Plan

Location and Access

Location and access are the key criteria in placement of the Museum. Location needs to be in a spot with maximum visibility and easy access. This will require the Museum to be at a major interchange or along a main thoroughfare. Cost of land and building will be another consideration in developing a location.

The desired location for the Northwest Science Museum would be along the I-84 corridor between Nampa and Boise or along Eagle Road. However, other potential locations have not been eliminated but will be evaluated based on the above criteria.

A Safe and Sustainable Building

The Directors intend the Museum to be a valued resource to the public for the long-term; therefore, it will be necessary to maintain the building in an

affordable manner. Depending on the acquisition of a building, two scenarios are possible:

1) It may be an older building with many of the building's systems aging, inefficient, environmentally unsound, and beyond their service lives. The Strategic Plan will bring the Museum building up to 21st-century standards. The structure will be remodeled to provide a main entrance, lobby, exhibit halls, store, laboratory/storage facilities, and office space. Critical life safety systems will be upgraded and security systems will be added. Throughout this entire process, the Museum will set an example of environmental stewardship.

Or:

2) A new building will be constructed. The plan will be to build the Museum to 21st-century standards. The structure will incorporate a main entrance, lobby, exhibit halls, store, laboratory/storage facility, and office space. Security and critical life safety systems will be installed. Throughout this entire process, the Museum will set an example of environmental stewardship.

Floor plans

One of the advantages of building new is that it can be designed to meet the desired display features. One potential design will be to build part of the Museum as a full scale replica of Noah's Ark. This has a number of benefits. It will actually show how big Noah's Ark was; it will generate huge publicity and lots of attention; and the internal structure will show just how much room was available on the Ark.



A normal floor plan with a rectangular building has also been developed. Both options will include a laboratory for preparing and arranging exhibit items.

Information and Entertaining Exhibits

Wildlife Exhibits

From Alaska to Argentina, Africa to Australia, a large variety of wildlife and habitat scenes illustrate our planet's amazing diversity. Like three-dimensional "postcards" from places near and far, they capture moments in time, showcasing the world's wondrous animals and the delicate ecosystems in which they live. These exhibits will give people an awe-inspiring look at the creative diversity of God.



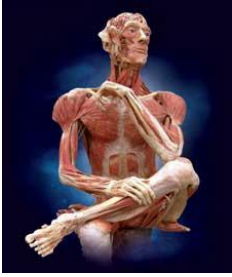
North American Animals – This wing will house animals found in North America. These animals are all part of the diverse wildlife on display in the spectacular North American wildlife dioramas. North America has an amazing variety of species, due to its array of ever-changing environments. Idaho's vertical profile means it has diverse ecosystems ranging from the desert and prairie grasslands, to high alpine tundra, to the deepest canyon in North America. The potential exists to present Idaho's unique wildlife as part of this display. All displays will be full body mounts in panoramic vistas with painted backgrounds.



Birds of the World – Sanctuaries and game reserves play an important role in preserving natural settings for all kinds of wildlife. These collections of scenes highlight several of these special places across this hemisphere. Displays will be full body mounts in panoramic vistas with painted backgrounds.

Other wildlife – Other exhibits will include wildlife from: Australia, Africa, Asia, etc... These exhibits will show the variety and diversity of wildlife from around the world.





Uniqueness of Life

Human body - Without a doubt, the most complex information-processing system in existence is the human body. The raw material, the basic chemicals in our body, can be found in the ‘dust of the ground.’ However, these chemicals cannot arrange themselves into cell tissues, organs, and systems. This can only happen with an input of intelligence. This exhibit will look at the greatest of all creations, man and woman, the marvelous machines—precise and efficient.



Animals - A fundamental concept of the theory of evolution is that of gradual change from "primitive," less complex organisms into highly structured organisms over millions of years. How valid is this idea? Can we verify the evidence supporting this idea? There are many animals existing today that defy evolution by their very existence. This exhibit will give examples of these animals and explain the problems they give the theory of evolution.



Insects - Insects are God’s choice to demonstrate His omnipotent artistic and engineering abilities. This exhibit will reveal some of the incomprehensible facts about insects. It will disclose the importance of insects to the survival of all forms of life, including humans, on the earth. The exhibit will reveal facts that overwhelmingly support the statement that we should “Thank God for Insects.”

Earth Science Exhibit

The Earth Science Wing will tell the dynamic story of our planet, from Creation through the events of the Flood, into the present day. This will house the rock and mineral collection as well as the OOPART collection. The purpose of this wing will be to guide visitors to an understanding that the rocks/fossils/artifacts can be explained better in a Biblical context than an evolutionary context.

Gems, Minerals & Rocks

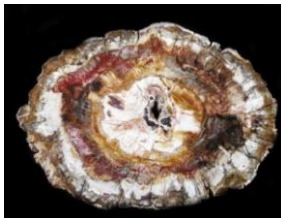
Tunnel beneath the earth in a re-created mine and examine a host of colorful crystals and minerals found both locally and globally.



Idaho Gems and Minerals – Idaho is called the Gem State, and it is first in the country in the production of silver. In addition, gold, lead, zinc, copper, and phosphate are produced in Idaho. Numerous sites exist within the state that draws rock hounds to collect specimens. This exhibit will showcase the amazing gems and minerals that have been found in Idaho.



World gems and minerals – This will be a collection of gems and minerals from all over the world. A unique display of world class rocks and minerals show the diversity of minerals and the elements that form them. This exhibit will also show how they are formed.



Petrified Wood – The Museum will house a world class petrified wood slabs/rounds exhibit. Explaining how the wood becomes fossilized gives us clues to the earth's history. The eruption of Mt. St. Helens gave us new evidence of how trees become petrified. Examples of how wood becomes petrified will be illustrated.

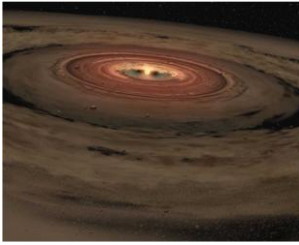
Astronomy

The Bible explicitly dates the universe as being the same age as the Earth, being just over 6,000 years old. According to the Bible, all other celestial bodies are slightly younger than the Earth. At the moment the Earth was created there were no other planets, stars, comets, or other such bodies in the universe. These came into existence on the fourth day of the Creation Week. There is indeed much evidence to support the position that our solar system, galaxies, and even that the entirety of the universe is very young.

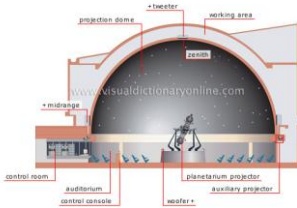


Space: Explore the Cosmos – This display will take a look at the universe and the incredible structure and design in the planets, stars, and galaxies. It will discuss

the facts that are not being taught that refute evolution and long ages.



Formation of the Solar System – This exhibit will reveal the unique circumstances that had to occur to form the solar system. There will also be individual exhibits on each of the planets and their uniqueness, as well as other objects such as comets.



Planetarium - A planetarium will present astronomy as a creation of God and point people toward The Creator.

History of Life Exhibits

The quest to understand the origins of the human race is one of the most compelling questions in science. This exhibit will explain the origin of the human race and trace the spread of people across the globe as related to the Bible. It will house the fossil collections and explain them from a Biblical point of view. People will understand why we see billions of dead things buried in rock layers laid down by water all over the earth.

Travel through time—starting about 6,000 years ago. Your journey begins with the 6 days of Creation. Travel through the total cataclysmic events of the flood, the dispersion of animals and people after the flood at the tower of Babel, and on to the present day.



Dinosaurs – Ever since the first dinosaur fossil was identified almost 200 years ago, people have wondered how these fascinating animals lived, moved, and behaved. At first, dinosaur hunters used only such tools as a keen eye, shovels, and compasses. Today, scientists also rely on everything from satellite technology to scanning electron microscopes.

Prepare to take a journey of discovery into the exciting world of modern paleontology. New dinosaur fossils are being discovered faster than ever before. Advanced technology allows scientists to look at these fossils in fresh

ways. Researchers are gaining surprising insights into these amazing animals. New discoveries, new technology, and new ideas are helping today's scientists piece together what these living, breathing dinosaurs were really like. Fossil reconstructions of dinosaurs and how they are interpreted Biblically will be a keystone of the Museum.



Ice Age Animals – During the ice age, great ice sheets cover much of the planet. Huge, strange animals roam the cold, windswept plains of the earth about 4,000 years ago. You have entered the “Ice Age!” This exhibit will house fossil reconstructions of ice age animals and how they are interpreted Biblically.



“Evolution” of Man – Displays of all the alleged ancestors of man with their interpretation from both an evolutionary and Biblical point of view will be what this display is about. This exhibit will also discuss the problems and misinformation of each “missing link”.

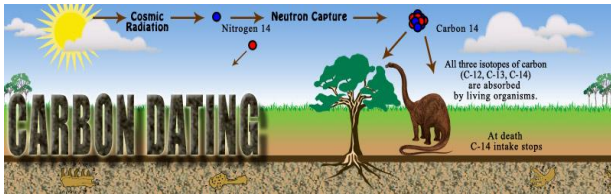


“The Missing Links” – Displays of the transitional fossils cannot be included in the Museum because there are none. These will have been the best evidence for evolution. Placards will be used to discuss the problems and misinformation of each “missing link”.

Miscellaneous Exhibits



OOPARTS – Out Of Place ARTifactS – These artifacts constitute some of the most damaging evidence against the evolutionary model. What are OOPARTS? OOPARTS are artifacts that are either out of place historically or technologically according to the evolutionary scheme of history. Why don't we hear more about OOPARTS? Because these artifacts show that the history of the world does not agree with the evolutionary model. The secular world tries to sweep these artifacts under the carpet, or put them in the realm of the unbelievable, paranormal, or with UFO's. The evolutionists go to great lengths to condemn and ridicule these artifacts. They cannot allow them to be legitimate artifacts or evolution crumbles.



Dating Techniques – This exhibit will discuss the evolutionary dating techniques, their assumptions and problems; it will also discuss the evidence for a young earth. Results

from the RATE research group will be presented.

Open Exhibit

This will be an open hall that will book traveling exhibits. They will not have to be creation exhibits but will have additional information about the exhibit from a Biblical perspective. Examples would be: Titanic Artifacts, Mythical Creatures: Dragons, Unicorns & Mermaids, The Horse, Snakes Alive!, The First Europeans: Treasures from the Hills of Atapuerca, Etc...

Additional Features

Chapel – There will be a small chapel in the Museum where people could go and seek counseling, or more information about the Creator of the Universe. This will be staffed by a pastor, volunteers, and/or Bible students as part of their curriculum. The lead pastor will also be in charge of daily Bible studies for the staff.

Bookstore – This will be a gift shop stocked with creation science books, old science books, other books of interest, DVD's, and souvenirs.

Food Court – This will be a café that will serve lunch items and drinks. It will also embrace an eating area described below.

Herbarium – This will be a green house type area that will have a wide array of tropical plants, a waterfall, sound effects, and a picnic area with seating.

Lecture Hall – This will be an auditorium that could hold up to 150 people. This will be used for lectures and special meetings. It will be equipped with the latest audio/visual equipment, sound and lighting. The lecture hall will also be used for a variety of activities, including teacher training, monthly meetings with special guest speakers and weekly classes.

Additional Activities

Field trips will be an integral part of the Museum Activities. They can be good experience for those wishing to see the evidence of creation or the effects of flooding for themselves.

7. Marketing Plan

How and with Whom

A marketing company or individual will be hired, or their time donated, to put together a strategic marketing plan for the Museum. The importance of an effective marketing plan cannot be stressed enough.

Key Attributes

The Museum presents controversial subject matter that has a huge draw worldwide. Every person deals with the issue of origins.

8. Investments and Financial Considerations

Financial Stability

The Directors plan to build on a diversified, stable base of support, thus ensuring the long-term viability of the Museum's programs and services. Our rationale is that stable, ongoing sources of revenue are critical for the Museum to fulfill its mission. Financial stability will enable the Directors to conduct more effective long-range planning and to continue its commitment to maintaining a balanced operating budget. The Directors will identify and develop new streams of revenue from non-traditional sources, thereby expanding and diversifying its base of support. Adopting this strategy will also allow community members to experience the personal satisfaction that philanthropy provides, and to fulfill their individual dreams through philanthropic actions and participation in the Museum.

9. Non-Profit verses Income Generating Status

The Board of Directors has voted to continue as a non-profit organization for the immediate future. The Northwest Science Museum is under the umbrella of the 501(c)(3) status of Foundations In Genesis Idaho/Oregon, Inc., (FIGI).

10. PowerPoint Presentations for Communicating Interest, Purpose, and Needs

A PowerPoint presentation is available upon request, as well as speaker presentations.

**Support -
- Land**

We are looking at acquiring land that is the best possible location for a museum. If you have land that you would like to donate, please contact us. If you just want to help with the land fund, please send support to our address ([details below](#)).

- Building

We are looking at constructing a large building after acquiring land. However, if a building is already available at a possible location for the museum, we would be interested in that also. If you have building that you would like to donate please contact us. If you just want to help with the building fund please send support to our address ([details below](#)).

- Monetary Gifts

Personnel - If you would like to specifically **support museum personnel** on a monthly basis, please contact us. If a one time donation, please send support to our address ([details below](#)).

Specific exhibit/display - We have numerous displays/exhibits that need funding. If you would like to exclusively fund a display please contact us. A donor plaque will be mounted on the display indicating that you funded this exhibit. If you want to help generically, please send support to our address ([details below](#)).

NW Science Museum
P.O. Box 3933
Nampa, ID 83653

Contact us by email at infonwsm@northwestsciencemuseum.org

Return this page with your support

Name _____

Support For:

Address _____

Land _____

Personnel _____

Email _____

Building _____

Phone _____

General Fund _____