

Raising the Accountability Bar

Greater accountability was one of the driving forces behind Alcohol Monitoring Systems' (AMS) evolution of SCRAM[®] (Secure Continuous Remote Alcohol Monitor) to SCRAM_X[®], which combines continuous alcohol monitoring (CAM) with house arrest technology in one court-validated device.

SCRAM_X tests transdermally ("through the skin") for alcohol every half hour around the clock – and also monitors continuously for presence in the home during court-mandated hours. By delivering an evidence-based, comprehensive profile of an offender's activities to supervising authorities, SCRAM_X helps courts and agencies more effectively manage hardcore drunk drivers and other higher-risk alcohol offenders.

Flexible Monitoring Options

With SCRAM_X, CAM can be used by itself or combined with house arrest as needed – depending on the offense, situation, or behavior while in the program. This gives you tremendous flexibility in how you manage your offenders, and enhances their compliance to the judge's orders. SCRAM_X's dual functionality also lets you tailor sanctions to the individual and better protect community safety. In fact, 9 out of 10 offenders are fully compliant while on the dual-function SCRAM_X device.

Comprehensive Judicial Support

To further bolster accountability, AMS firmly stands behind SCRAM_X results in court through our comprehensive Judicial Support Program. To date, AMS has prepared over 2,500 formal court reports that detailed the monitoring results of offenders who denied a violation. We've also provided court testimony in over 80 evidentiary hearings across the country, with 34 resulting in favorable Frye/Daubert rulings and 3 State Supreme and Appellate Court rulings.

Leadership Advantage

SCRAM_X is the industry leader in CAM and house arrest because it:

- Uses scientifically-proven transdermal technology to monitor over 240,000 offenders in 48 states
- Has been validated by thousands of courts nationwide
- Conclusively distinguishes between ingested and environmental alcohol
- Provides single-source admissibility, with no need for back-up tests
- Provides a more cost-effective and behavior-changing solution than incarceration or other monitoring methods



How SCRAM_x Works

1 SCRAM_x bracelet

- Worn by offenders 24/7
- Performs an alcohol test every 30 minutes
- Features industry-leading, anti-tamper technology with multiple sensors
- Automatically collects, stores, and uploads alcohol data to the SCRAM_x base station
 - Communicates alcohol data on a pre-determined schedule
 - Conveys house arrest data as events happen
 - Date- and time-stamps readings for easy reporting and analysis

2 SCRAM_x base station

- Works either via analog phone line or SCRAM_x Wireless
- Uploads all available data from the SCRAM_x bracelet
 - Alcohol test data
 - House arrest schedule/curfew compliance data
- Transmits uploaded alcohol data at pre-scheduled time(s) daily to AMS for analysis and reporting

3 Data uploading

Options for offenders

- Analog phone line – transfers data from the base station to SCRAMNET via a standard landline in the home, office, or other approved location
- SCRAM_x Wireless – digitally transfers data to SCRAMNET without the need for a landline, a cell phone, or the internet

Option for supervisory agents

- Direct Connect – Connects the bracelet directly to an internet-enabled PC or laptop (when wireless or analog connection is unavailable), and provides flexibility to perform client management tasks in the office or field



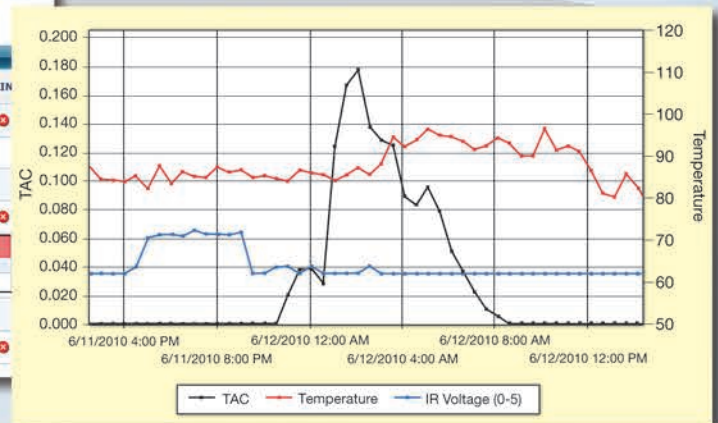
DIRECT CONNECT



This graph depicts an attempted tamper (blue line), followed by a drinking event (black line) showing a gradual increase in alcohol, then slowly burning off

AM	EM	CLIENT	AM CRITICAL COMM.	DEVICE(S)	MAIN
+	+	Anderson, Bob		Bracelet: 28803 Base Station: 1002171	+
	+	Greco, Gary		No Equipment	
	+	Jones, Dave		Bracelet: 62369 Direct Connect	+
	+	Phillips, John		Bracelet: 5311 Direct Connect	+
Alert					
AM	Event Date/Time	Received Date/Time	Alert Status		
+	Potential Tamper	Tue 10/04/2011 - 09:06:45 AM	Wed 10/05/2011 - 05:58:00 AM	Unresolved	
	+	Boyers, Tom		Bracelet: Pending Assignment Base Station: Pending Assignment	
	+	Smith, Phil		Bracelet: 6330 Base Station: 1016301	+

The Caseload Management page consolidates alcohol and house arrest monitoring data into a single view for visibility into your entire caseload



4 SCRAMNET

- Central, secure repository where offender information is stored, analyzed, reported, and maintained
- Can be accessed 24/7 from any location using a standard and secure web browser
- Flags and graphically depicts any incidents of drinking, tampering, schedule noncompliance, and equipment/communication malfunctions
- Provides flexible data management options – from exception-based reports for quick identification and response to problem offenders to consolidated data views for at-a-glance assessment of all activity across the entire caseload

Follow us at:



Join the conversation at: www.sobering-up.com