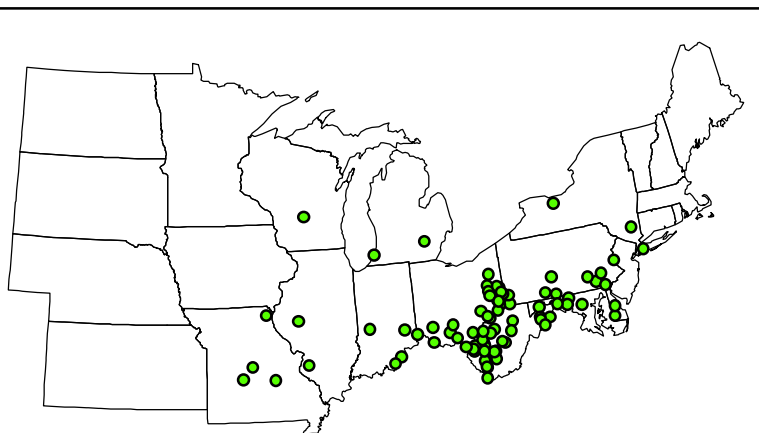
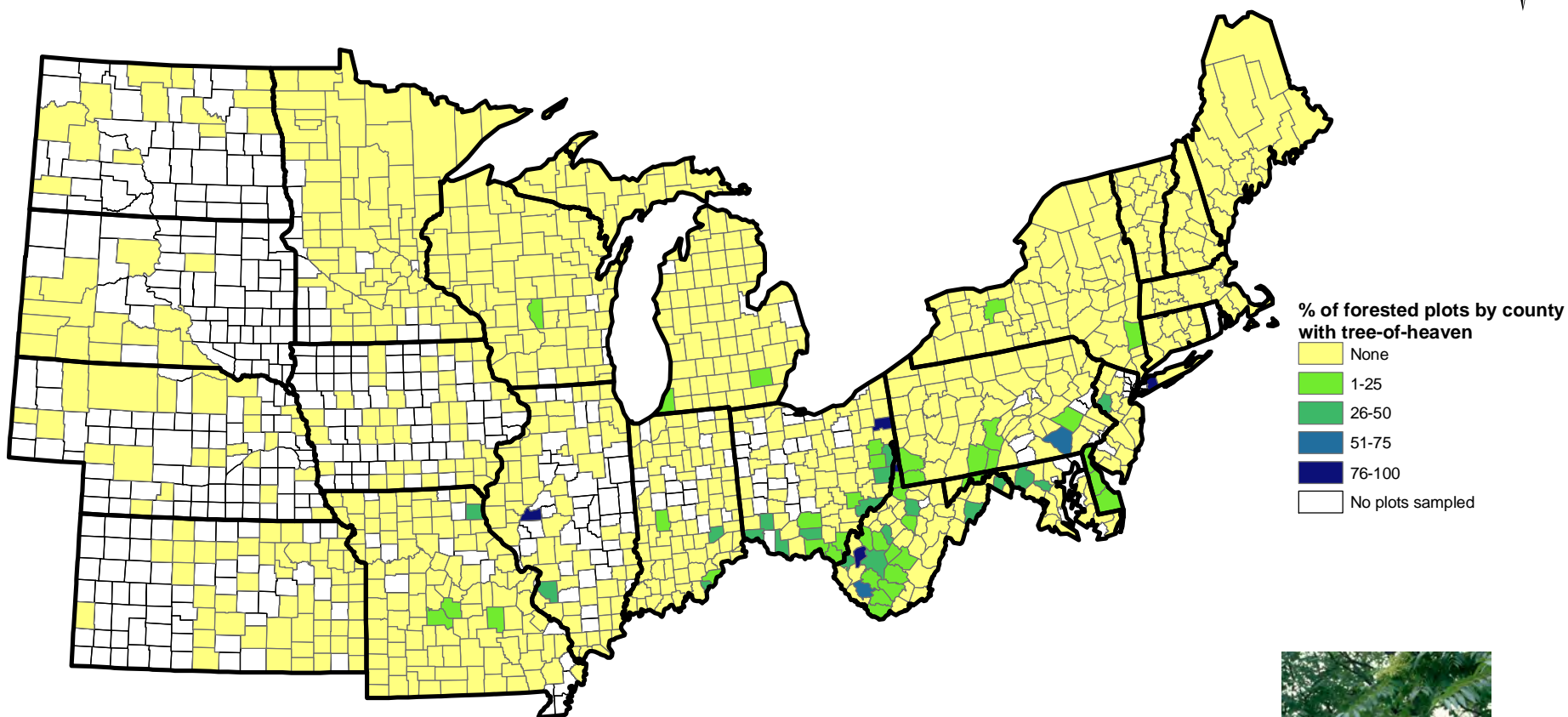
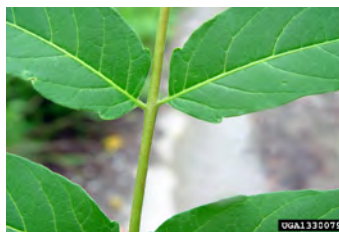


# Distribution of tree-of-heaven (*Ailanthus altissima*)



● Approximate locations of tree-of-heaven



Chris Evans, University of Georgia, [www.forestryimages.org](http://www.forestryimages.org)



Barbara Tokarska-Guzik, University of Silesia, [www.forestryimages.org](http://www.forestryimages.org)



Barbara Tokarska-Guzik, University of Silesia, [www.forestryimages.org](http://www.forestryimages.org)

For more information about the FIA program's invasive species data collection program, go to: <http://nrs.fs.fed.us/fia/topics/invasives/>

For detailed information about the invasive plants for which FIA collects data, go to: <http://www.treesearch.fs.fed.us/pubs/34183>



USDA FOREST SERVICE  
NORTHERN RESEARCH STATION  
1992 Folwell Ave., St. Paul, Minn.



Projection: Albers  
Sources: USDA Forest Service 2007-2009 FIA data.  
For information visit: <http://www.fia.fs.fed.us/>  
Produced December, 2010. Author: Cassandra Olson