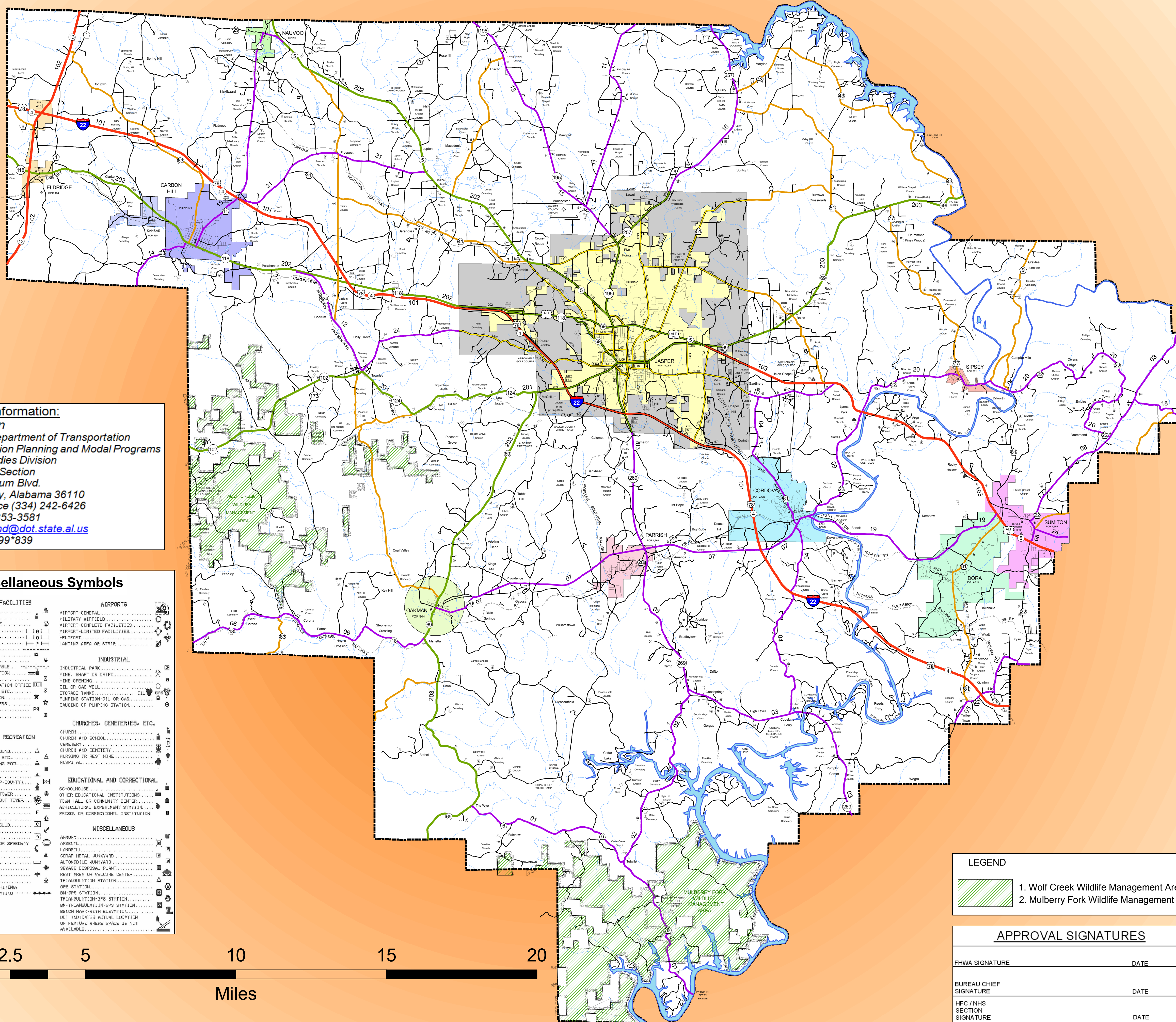


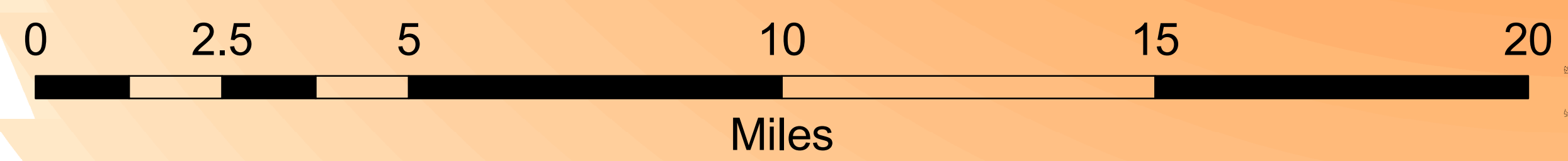
WALKER COUNTY HIGHWAY FUNCTIONAL CLASSIFICATION SYSTEM



Contact Information:
 Don Griffin
 Alabama Department of Transportation
 Transportation Planning and Modal Programs
 Special Studies Division
 HFC / NHS Section
 1409 Coliseum Blvd.
 Montgomery, Alabama 36110
 Phone: Office (334) 242-6426
 Fax: (334) 353-3581
 Email: griffind@dot.state.al.us
 SouLinc: 1*99*839

Miscellaneous Symbols

PUBLIC SERVICE FACILITIES		AIRPORTS	
COURTHOUSE	POST OFFICE	AIRPORT-ODIERAL	MILITARY AIRFIELD
WATER TANK OR STAND PIPE	PIPE LINE-OIL	AIRPORT-COMLETE FACILITIES	AIRPORT-LIMITED FACILITIES
PIPE LINE-GAS	PIPE LINE-PETROLEUM	LANDING AREA OR STRIP	
TRANSMISSION LINE	POWER PLANT		
UNDERGROUND TELEPHONE CABLE	INDUSTRIAL		
RAILROAD OR TELEVISION STATION	HIGHWAY GARAGE		
DEPARTMENT OF TRANSPORTATION OFFICE	DEPARTMENT OF TRANSPORTATION OFFICE		
POLICE OR SHERIFF STATION	STATE TROOPER HEADQUARTERS		
BOOSTER STATION	FIRE STATION		
		CHURCHES, CEMETERIES, ETC.	
		CHURCH	CHURCH AND SCHOOL
		CEMETERY	CHURCH AND CEMETERY
		NURSING OR REST HOME	HOSPITAL
		EDUCATIONAL AND CORRECTIONAL	
		SCHOOLHOUSE	OTHER EDUCATIONAL INSTITUTIONS
		TOWN HALL OR COMMUNITY CENTER	AGRICULTURAL EXPERIMENT STATION
		PRISON OR CORRECTIONAL INSTITUTION	
		MISCELLANEOUS	
		ARMORY	LANDFILL
		SEWAGE DISPOSAL PLANT	REST AREA OR WELCOME CENTER
		TRANSMULATION STATION	OPS STATION
		BIH-OPS STATION	TRANSMULATION-OPS STATION
		BIH-TRANSMULATION-OPS STATION	BENCH MARK-VEITH ELEVATION
		DOT INDICATES ACTUAL LOCATION OF FEATURE WHERE SPACE IS NOT AVAILABLE.	



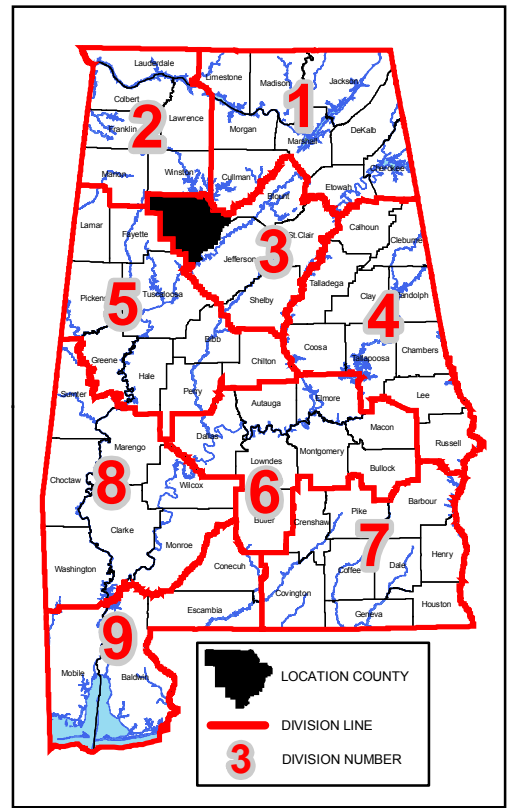
Legend

Functional Classification	Proposed Functional Class
Urban Interstate - 11	Urban Interstate - 11
Freeway - 12	Freeway - 12
Urban Principal Arterial - 14	Urban Principal Arterial - 14
Urban Minor Arterial - 16	Urban Minor Arterial - 16
Collector - 17	Collector - 17
Rural Interstate - 1	Rural Interstate - 1
Rural Principal Arterial - 2	Rural Principal Arterial - 2
Rural Minor Arterial - 6	Rural Minor Arterial - 6
Rural Major Collector - 7	Rural Major Collector - 7
Rural Minor Collector - 8	Rural Minor Collector - 8

Miscellaneous Items

GIS.OpenWater_ALDOTDivisions	INTERSTATE	Walker County Cities	Kansas
GIS.NHD_by_County	US ROUTES	CITY	Nauvoo
GIS_Swamp_Marsh	STATE ROUTES	Carbon Hill	Oakman
TRANSDATA.urban_large	COUNTY ROADS	Cordova	Parrish
TRANSDATA.urban_large_study	COUNTY ROADS	Dora	Sipsey
TRANSDATA.urban_small	FOREST ROADS	Eldridge	Sumiton
GIS.County		Jasper	

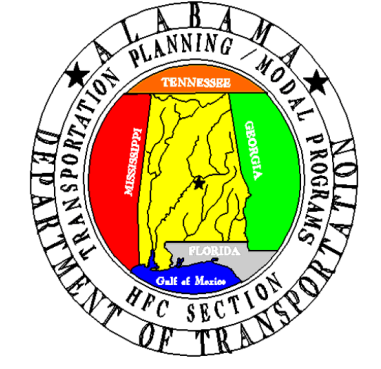
MAP SCALE
SEE SCALE ON MAP



Disclaimer of Liability
 Due to the scale of this map neither the Alabama Department of Transportation (ALDOT) or the State of Alabama nor any employees and contractors thereof, make any warranty, expressed or implied, or assumes any legal liability, or responsibility, for the accuracy, completeness, or usefulness of any information contained on this map.

WALKER COUNTY -64

ALABAMA DEPARTMENT OF TRANSPORTATION
 Highway Functional Classification
 Transportation Planning / Modal Programs Bureau



FHWA APPROVAL DATE		DRAWN BY:	
DATE November 23, 2004		D.H. GRIFFIN	
DATE DRAWN:		OCTOBER 31, 2008	
NAME	DATE	COMMENTS	

LEGEND

- 1. Wolf Creek Wildlife Management Area
- 2. Mulberry Fork Wildlife Management Area

APPROVAL SIGNATURES

FHWA SIGNATURE	DATE
BUREAU CHIEF SIGNATURE	DATE
HFC / NHS SECTION SIGNATURE	DATE