

## Country Data Report for LAO PDR, 1996-2011

This Country Data Report summarizes the data from the Worldwide Governance Indicators (WGI) project for a single country. The WGI report six aggregate governance indicators for over 200 countries and territories over the period 1996-2011, covering i) Voice and Accountability, ii) Political Stability and Absence of Violence, iii) Government Effectiveness, iv) Regulatory Quality, v) Rule of Law, and vi) Control of Corruption.

The line graphs on each page show the country's percentile rank on each of the six governance indicators. Percentile ranks indicate the percentage of countries worldwide that rank lower than the indicated country, so that higher values indicate better governance scores. The line graphs include margins of error shown as dashed lines, corresponding to 90% confidence intervals. Changes over time in the aggregate scores that are small relative to these margins of error should not be interpreted as signalling a statistically significant change in the indicators.

The WGI are composite measures based on a large number of underlying data sources. The source data for each aggregate indicator are reported in a table on each page. Individual data sources have been rescaled to run from 0 (low) to 1 (high). These scores are comparable over time and across countries since most individual measures are based on similar methodologies over time. Scores from different individual indicators are not however directly comparable with each other since the different data sources use different units and cover different sets of countries. Not all data sources cover all countries, and cases where data are not available are reported as "..". For some sources and countries, the underlying source data is confidential and cannot be publicly disclosed at the request of the organizations producing the data. These cases are reported as "NP".

For a full description of the WGI methodology, and interactive data access, and downloads of the aggregate and individual indicators, please visit [www.govindicators.org](http://www.govindicators.org).

---

### Disclaimer

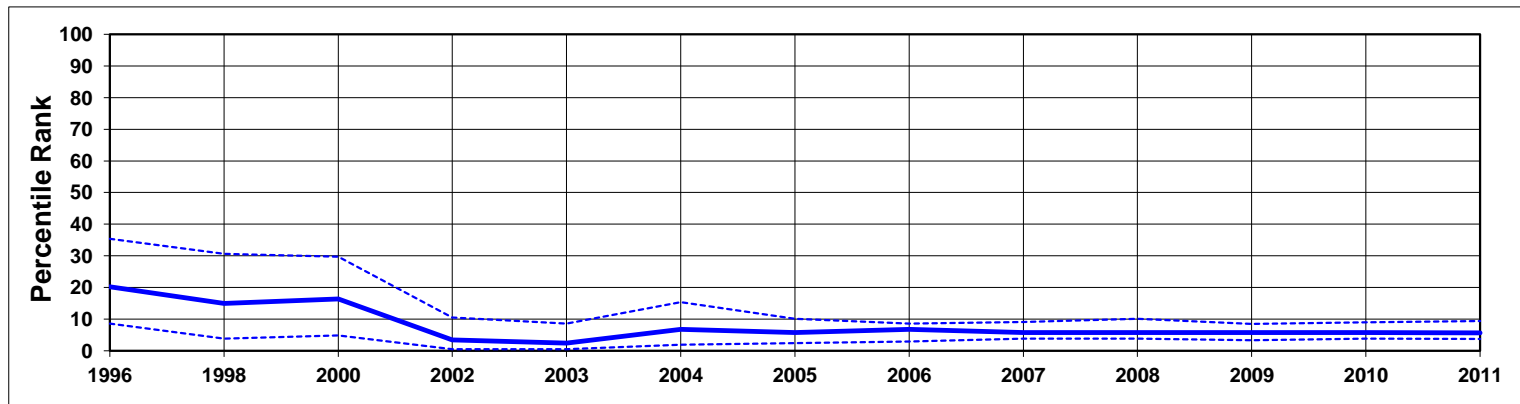
*The Worldwide Governance Indicators (WGI) are a research dataset summarizing the views on the quality of governance provided by a large number of enterprise, citizen and expert survey respondents in industrial and developing countries. These data are gathered from a number of survey institutes, think tanks, non-governmental organizations, international organizations, and private sector firms. The WGI do not reflect the official views of the World Bank, its Executive Directors, or the countries they represent. The WGI are not used by the World Bank Group to allocate resources.*

---

# Worldwide Governance Indicators

LAO PDR, 1996-2011

## Aggregate Indicator: Voice & Accountability



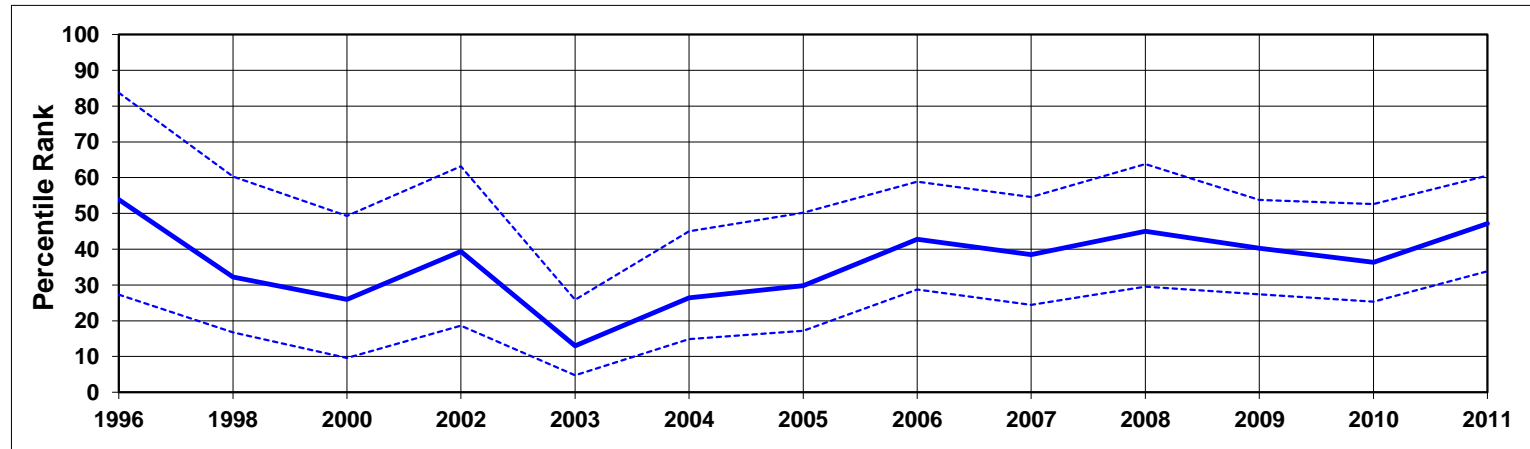
### Individual Indicators used to construct Voice & Accountability

Code	Source	Website	1996	1998	2000	2002	2003	2004	2005	2006	2007	2008	2009	2010	2011
AFR	Afrobarometer	<a href="http://www.afrobarometer.org">http://www.afrobarometer.org</a>	..	..	..	..	..	..	..	..	..	..	..	..	..
BTI	Bertelsmann Transformation Index	<a href="http://www.bertelsmann-transformation-index.de/">http://www.bertelsmann-transformation-index.de/</a>	..	..	..	0.00	0.12	0.12	0.14	0.14	0.13	0.13	0.12	0.12	0.12
CCR	Freedom House Countries at the Crossroads	<a href="http://www.freedomhouse.org">http://www.freedomhouse.org</a>	..	..	..	..	..	0.25	0.25	0.25	0.24	0.24	0.24	0.24	0.24
EIU	Economist Intelligence Unit	<a href="http://www.eiu.com">http://www.eiu.com</a>	..	..	..	..	..	..	..	0.17	0.17	0.17	0.17	0.17	0.17
FRH	Freedom House	<a href="http://www.freedomhouse.org">http://www.freedomhouse.org</a>	0.18	0.17	0.16	0.12	0.12	0.11	0.12	0.12	0.11	0.10	0.11	0.11	0.11
GCS	World Economic Forum Global Competitiveness Survey	<a href="http://www.weforum.org">http://www.weforum.org</a>	..	..	..	..	..	..	..	..	..	..	..	..	..
GII	Global Integrity Index	<a href="http://www.globalintegrity.org/">http://www.globalintegrity.org/</a>	..	..	..	..	..	..	..	..	..	..	..	..	..
GWP	Gallup World Poll	<a href="http://www.gallupworldpoll.com">http://www.gallupworldpoll.com</a>	..	..	..	..	..	..	..	0.88	0.89	0.81	0.81	0.81	0.90
HUM	Cingranelli-Richards (CIRI) Human Rights Database	<a href="http://www.humanrightsdata.com">http://www.humanrightsdata.com</a>	0.50	0.31	0.38	0.19	0.19	0.31	0.31	0.13	0.25	0.19	0.25	0.31	0.31
IFD	IFAD Rural Sector Performance Assessments	<a href="http://www.ifad.org">http://www.ifad.org</a>	..	..	..	..	..	0.56	0.46	0.46	0.46	0.63	0.63	0.63	0.61
IPD	Institutional Profiles Database	<a href="http://www.cepii.fr/">http://www.cepii.fr/</a>	..	..	..	..	..	..	..	..	..	..	0.34	0.34	0.34
IRP	IREEP African Electoral Index	<a href="http://www.ireep.org">http://www.ireep.org</a>	..	..	..	..	..	..	..	..	..	..	..	..	..
LBO	Latinobarometro	<a href="http://www.latinobarometro.org">http://www.latinobarometro.org</a>	..	..	..	..	..	..	..	..	..	..	..	..	..
MSI	IREX Media Sustainability Index	<a href="http://www.irex.org">http://www.irex.org</a>	..	..	..	..	..	..	..	..	..	..	..	..	..
OBI	International Budget Project Open Budget Index	<a href="http://www.internationalbudget.org/">http://www.internationalbudget.org/</a>	..	..	..	..	..	..	..	..	..	..	..	..	..
PRS	Political Risk Services International Country Risk Guide	<a href="http://www.prsgroup.com">http://www.prsgroup.com</a>	..	..	..	..	..	..	..	..	..	..	..	..	..
RSF	Reporters Without Borders Press Freedom Index	<a href="http://www.rsf.org">http://www.rsf.org</a>	..	..	..	0.11	0.13	0.40	0.39	0.38	0.35	0.30	0.20	0.23	0.35
VAB	Vanderbilt University Americas Barometer Survey	<a href="http://www.lapopsurveys.org">http://www.lapopsurveys.org</a>	..	..	..	..	..	..	..	..	..	..	..	..	..
WCY	Institute for management & development World Competitiveness Yearbook	<a href="http://www.imd.ch">http://www.imd.ch</a>	..	..	..	..	..	..	..	..	..	..	..	..	..
WMO	Global Insight Business Conditions and Risk Indicators	<a href="http://www.globalinsight.com">http://www.globalinsight.com</a>	0.38	0.38	0.38	0.38	0.31	0.34	0.31	0.31	0.31	0.31	0.31	0.31	0.31

# Worldwide Governance Indicators

LAO PDR, 1996-2011

## Aggregate Indicator: Political Stability and Absence of Violence



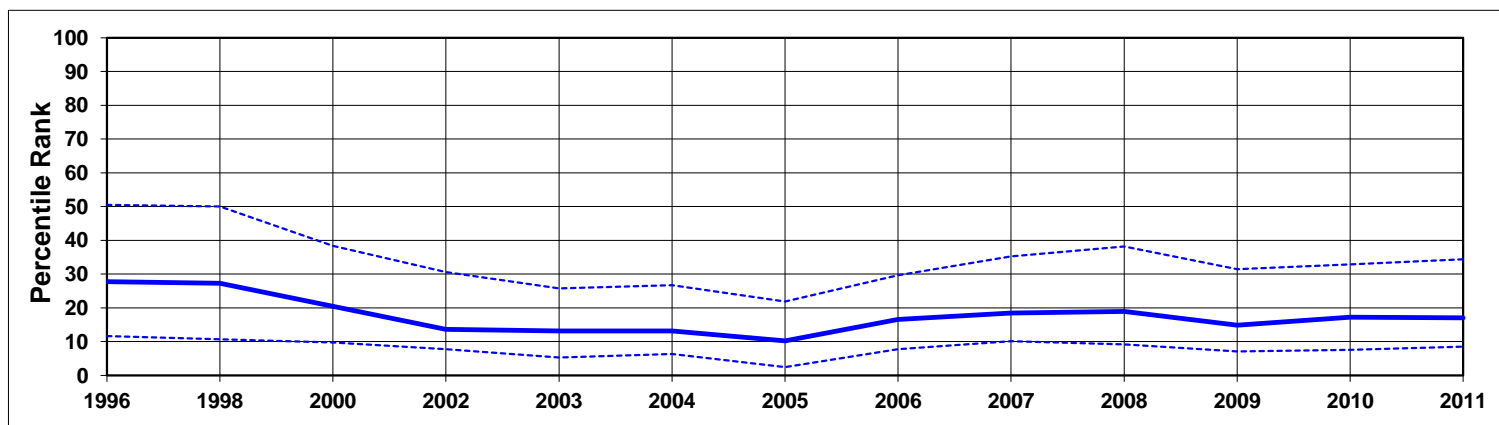
## Individual Indicators used to construct Political Stability and Absence of Violence

Code	Source	Website	1996	1998	2000	2002	2003	2004	2005	2006	2007	2008	2009	2010	2011
EIU	Economist Intelligence Unit	<a href="http://www.eiu.com">http://www.eiu.com</a>	..	..	..	..	..	..	..	0.60	0.60	0.60	0.60	0.60	0.60
GCS	World Economic Forum Global Competitiveness Survey	<a href="http://www.weforum.org">http://www.weforum.org</a>	..	..	..	..	..	..	..	..	..	..	..	..	..
HUM	Cingranelli-Richards Human Rights Database & Political Terror Scale	<a href="http://www.humanrightsdata.com">http://www.humanrightsdata.com</a>	1.00	0.66	0.50	0.66	0.25	0.50	0.38	0.63	0.50	0.84	0.69	0.81	0.81
IJT	iJET Country Security Risk Ratings	<a href="https://worldcue.ijet.com/tic/login.jsp">https://worldcue.ijet.com/tic/login.jsp</a>	..	..	..	..	..	0.50	0.50	0.50	0.50	0.50	0.50	0.50	0.50
IPD	Institutional Profiles Database	<a href="http://www.cepii.fr/">http://www.cepii.fr/</a>	..	..	..	..	..	..	..	..	..	..	0.71	0.71	0.71
PRS	Political Risk Services International Country Risk Guide	<a href="http://www.prsgroup.com">http://www.prsgroup.com</a>	..	..	..	..	..	..	..	..	..	..	..	..	..
WCY	Institute for management & development World Competitiveness Yearbook	<a href="http://www.imd.ch">http://www.imd.ch</a>	..	..	..	..	..	..	..	..	..	..	..	..	..
WMO	Global Insight Business Conditions and Risk Indicators	<a href="http://www.globalinsight.com">http://www.globalinsight.com</a>	0.56	0.56	0.50	0.63	0.44	0.52	0.63	0.69	0.69	0.69	0.69	0.56	0.69

# Worldwide Governance Indicators

LAO PDR, 1996-2011

## Aggregate Indicator: Government Effectiveness

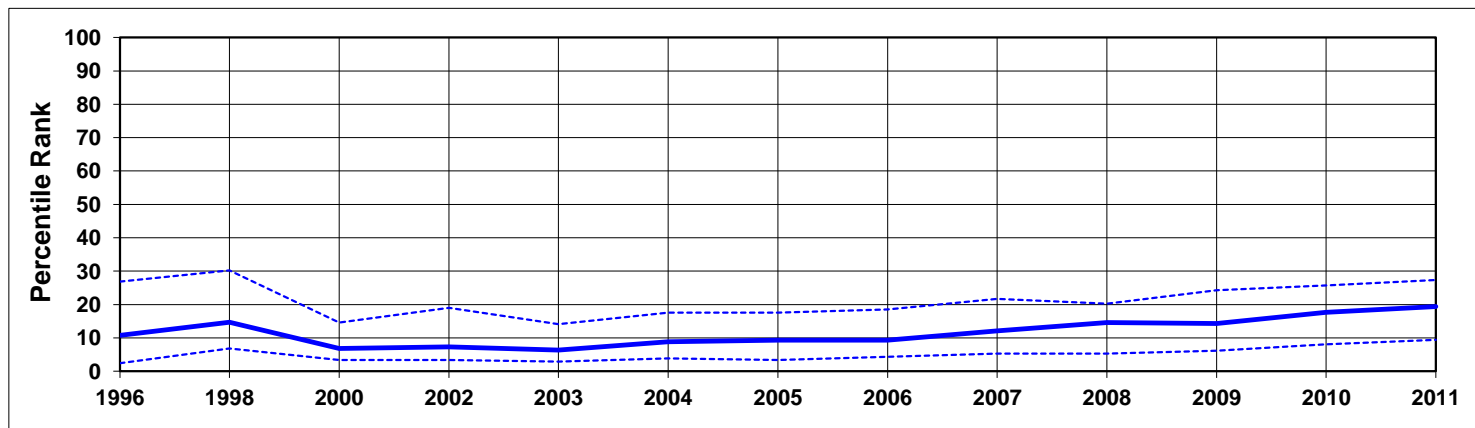


## Individual Indicators used to construct Government Effectiveness

Code	Source	Website	1996	1998	2000	2002	2003	2004	2005	2006	2007	2008	2009	2010	2011
ADB	African Development Bank Country Policy and Institutional Assessments	<a href="http://cpia.afdb.org/About.aspx">http://cpia.afdb.org/About.aspx</a>	..	..	..	..	..	..	..	..	..	..	..	..	..
AFR	Afrobarometer	<a href="http://www.afrobarometer.org">http://www.afrobarometer.org</a>	..	..	..	..	..	..	..	..	..	..	..	..	..
ASD	Asian Development Bank Country Policy and Institutional Assessments	<a href="http://www.adb.org/">http://www.adb.org/</a>	..	..	..	..	..	..	0.33	0.33	0.47	0.50	0.50	0.57	0.57
BPS	Business Enterprise Environment Survey	<a href="http://www.worldbank.org/eca/governance">http://www.worldbank.org/eca/governance</a>	..	..	..	..	..	..	..	..	..	..	..	..	..
BTI	Bertelsmann Transformation Index	<a href="http://www.bertelsmann-transformation-index.de/">http://www.bertelsmann-transformation-index.de/</a>	..	..	..	0.15	0.35	0.35	0.38	0.38	0.37	0.37	0.33	0.33	0.33
EIU	Economist Intelligence Unit	<a href="http://www.eiu.com">http://www.eiu.com</a>	..	..	..	..	..	..	..	0.13	0.13	0.13	0.13	0.13	0.13
GCS	World Economic Forum Global Competitiveness Survey	<a href="http://www.weforum.org">http://www.weforum.org</a>	..	..	..	..	..	..	..	..	..	..	..	..	..
GWP	Gallup World Poll	<a href="http://www.gallupworldpoll.com">http://www.gallupworldpoll.com</a>	..	..	..	..	..	..	..	0.71	0.73	0.72	0.72	0.72	0.66
IFD	IFAD Rural Sector Performance Assessments	<a href="http://www.ifad.org">http://www.ifad.org</a>	..	..	..	..	..	0.60	0.60	0.60	0.60	0.50	0.45	0.45	0.55
IPD	Institutional Profiles Database	<a href="http://www.cepii.fr/">http://www.cepii.fr/</a>	..	..	..	..	..	..	..	..	..	..	0.21	0.21	0.21
LBO	Latinobarometro	<a href="http://www.latinobarometro.org">http://www.latinobarometro.org</a>	..	..	..	..	..	..	..	..	..	..	..	..	..
PIA	World Bank Country Policy and Institutional Assessments	<a href="http://www.worldbank.org">http://www.worldbank.org</a>	..	NP	NP	NP	NP	NP	0.30	0.37	0.37	0.43	0.43	0.47	0.47
PRS	Political Risk Services International Country Risk Guide	<a href="http://www.prsgroup.com">http://www.prsgroup.com</a>	..	..	..	..	..	..	..	..	..	..	..	..	..
WCY	Institute for management & development World Competitiveness Yearbook	<a href="http://www.imd.ch">http://www.imd.ch</a>	..	..	..	..	..	..	..	..	..	..	..	..	..
WMO	Global Insight Business Conditions and Risk Indicators	<a href="http://www.globalinsight.com">http://www.globalinsight.com</a>	0.38	0.38	0.38	0.38	0.31	0.30	0.31	0.31	0.31	0.31	0.31	0.31	0.31

## LAO PDR, 1996-2011

### Aggregate Indicator: Regulatory Quality

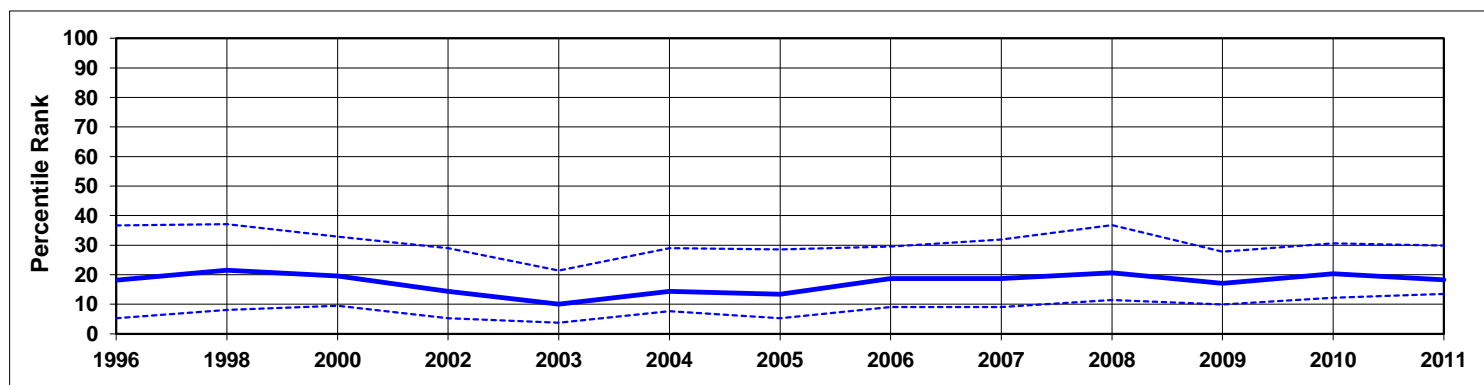


### Individual Indicators used to construct Regulatory Quality

Code	Source	Website	1996	1998	2000	2002	2003	2004	2005	2006	2007	2008	2009	2010	2011
ADB	African Development Bank Country Policy and Institutional Assessments	<a href="http://cpia.afdb.org/About.aspx">http://cpia.afdb.org/About.aspx</a>	..	..	..	..	..	..	..	..	..	..	..	..	..
ASD	Asian Development Bank Country Policy and Institutional Assessments	<a href="http://www.adb.org/">http://www.adb.org/</a>	..	..	..	..	..	..	0.45	0.50	0.50	0.50	0.55	0.55	0.55
BPS	Business Enterprise Environment Survey	<a href="http://www.worldbank.org/eca/governance">http://www.worldbank.org/eca/governance</a>	..	..	..	..	..	..	..	..	..	..	..	..	..
BTI	Bertelsmann Transformation Index	<a href="http://www.bertelsmann-transformation-index.de/">http://www.bertelsmann-transformation-index.de/</a>	..	..	..	0.25	0.35	0.35	0.40	0.40	0.45	0.45	0.48	0.48	0.48
EBR	European Bank for Reconstruction & Development Transition Report	<a href="http://www.ebrd.org">http://www.ebrd.org</a>	..	..	..	..	..	..	..	..	..	..	..	..	..
EIU	Economist Intelligence Unit	<a href="http://www.eiu.com">http://www.eiu.com</a>	..	..	..	..	..	..	..	0.30	0.30	0.30	0.30	0.30	0.30
GCS	World Economic Forum Global Competitiveness Survey	<a href="http://www.weforum.org">http://www.weforum.org</a>	..	..	..	..	..	..	..	..	..	..	..	..	..
HER	Heritage Foundation Index of Economic Freedom	<a href="http://www.heritage.org">http://www.heritage.org</a>	0.10	0.10	0.10	0.20	0.20	0.20	0.30	0.25	0.25	0.25	0.23	0.23	0.23
IFD	IFAD Rural Sector Performance Assessments	<a href="http://www.ifad.org">http://www.ifad.org</a>	..	..	..	..	..	0.53	0.52	0.52	0.52	0.46	0.47	0.47	0.42
IPD	Institutional Profiles Database	<a href="http://www.cepii.fr/">http://www.cepii.fr/</a>	..	..	..	..	..	..	..	..	..	..	0.34	0.34	0.34
PIA	World Bank Country Policy and Institutional Assessments	<a href="http://www.worldbank.org">http://www.worldbank.org</a>	..	NP	NP	NP	NP	NP	0.45	0.45	0.45	0.45	0.45	0.45	0.50
PRS	Political Risk Services International Country Risk Guide	<a href="http://www.prsgroup.com">http://www.prsgroup.com</a>	..	..	..	..	..	..	..	..	..	..	..	..	..
WCY	Institute for management & development World Competitiveness Yearbook	<a href="http://www.imd.ch">http://www.imd.ch</a>	..	..	..	..	..	..	..	..	..	..	..	..	..
WMO	Global Insight Business Conditions and Risk Indicators	<a href="http://www.globalinsight.com">http://www.globalinsight.com</a>	0.38	0.38	0.31	0.31	0.25	0.30	0.25	0.25	0.25	0.25	0.25	0.31	0.31

## LAO PDR, 1996-2011

### Aggregate Indicator: Rule of Law

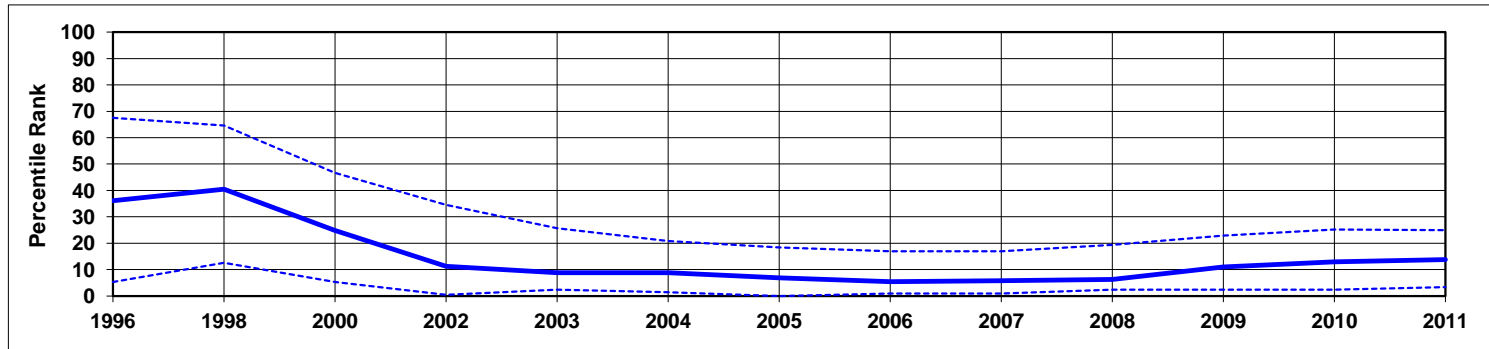


### Individual Indicators used to construct Rule of Law

Code	Source	Website	1996	1998	2000	2002	2003	2004	2005	2006	2007	2008	2009	2010	2011
ADB	African Development Bank Country Policy and Institutional Assessments	<a href="http://cpia.afdb.org/About.aspx">http://cpia.afdb.org/About.aspx</a>	..	..	..	..	..	..	..	..	..	..	..	..	..
AFR	Afrobarometer	<a href="http://www.afrobarometer.org">http://www.afrobarometer.org</a>	..	..	..	..	..	..	..	..	..	..	..	..	..
ASD	Asian Development Bank Country Policy and Institutional Assessments	<a href="http://www.adb.org/">http://www.adb.org/</a>	..	..	..	..	..	..	0.30	0.40	0.40	0.50	0.50	0.60	0.60
BPS	Business Enterprise Environment Survey	<a href="http://www.worldbank.org/eca/governance">http://www.worldbank.org/eca/governance</a>	..	..	..	..	..	..	..	..	..	..	..	..	..
BTI	Bertelsmann Transformation Index	<a href="http://www.bertelsmann-transformation-index.de/">http://www.bertelsmann-transformation-index.de/</a>	..	..	..	0.00	0.20	0.20	0.13	0.13	0.17	0.17	0.17	0.17	0.17
CCR	Freedom House Countries at the Crossroads	<a href="http://www.freedomhouse.org">http://www.freedomhouse.org</a>	..	..	..	..	..	0.24	0.28	0.28	0.24	0.24	0.24	0.24	0.24
EIU	Economist Intelligence Unit	<a href="http://www.eiu.com">http://www.eiu.com</a>	..	..	..	..	..	..	..	0.34	0.34	0.34	0.31	0.31	0.31
FRH	Freedom House	<a href="http://www.freedomhouse.org">http://www.freedomhouse.org</a>	..	..	..	..	..	..	..	..	..	..	..	..	..
GCS	World Economic Forum Global Competitiveness Survey	<a href="http://www.weforum.org">http://www.weforum.org</a>	..	..	..	..	..	..	..	..	..	..	..	..	..
GII	Global Integrity Index	<a href="http://www.globalintegrity.org/">http://www.globalintegrity.org/</a>	..	..	..	..	..	..	..	..	..	..	..	..	..
GWP	Gallup World Poll	<a href="http://www.gallupworldpoll.com">http://www.gallupworldpoll.com</a>	..	..	..	..	..	..	..	0.80	0.80	0.82	0.82	0.82	0.92
HER	Heritage Foundation Index of Economic Freedom	<a href="http://www.heritage.org">http://www.heritage.org</a>	0.10	0.10	0.10	0.10	0.10	0.10	0.10	0.10	0.10	0.10	0.15	0.20	0.15
HUM	Cingranelli-Richards (CIRI) Human Rights Database	<a href="http://www.humanrightsdata.com">http://www.humanrightsdata.com</a>	0.00	0.00	0.00	0.00	0.00	0.00	0.50	0.00	0.50	0.50	0.50	0.50	0.50
IFD	IFAD Rural Sector Performance Assessments	<a href="http://www.ifad.org">http://www.ifad.org</a>	..	..	..	..	..	0.50	0.49	0.49	0.49	0.50	0.48	0.48	0.53
IPD	Institutional Profiles Database	<a href="http://www.cepii.fr/">http://www.cepii.fr/</a>	..	..	..	..	..	..	..	..	..	..	0.23	0.23	0.23
LBO	Latinobarometro	<a href="http://www.latinobarometro.org">http://www.latinobarometro.org</a>	..	..	..	..	..	..	..	..	..	..	..	..	..
PIA	World Bank Country Policy and Institutional Assessments	<a href="http://www.worldbank.org">http://www.worldbank.org</a>	..	NP	NP	NP	NP	NP	0.40	0.40	0.40	0.40	0.40	0.40	0.40
PRS	Political Risk Services International Country Risk Guide	<a href="http://www.prsgroup.com">http://www.prsgroup.com</a>	..	..	..	..	..	..	..	..	..	..	..	..	..
TPR	US State Department Trafficking in People report	<a href="http://www.state.gov/g/tip/rls/tiprpt">http://www.state.gov/g/tip/rls/tiprpt</a>	..	..	0.50	0.50	0.33	0.67	0.00	0.67	0.67	0.67	0.33	0.67	0.67
VAB	Vanderbilt University Americas Barometer Survey	<a href="http://www.lapopsurveys.org">http://www.lapopsurveys.org</a>	..	..	..	..	..	..	..	..	..	..	..	..	..
WCY	Institute for management & development World Competitiveness Yearbook	<a href="http://www.imd.ch">http://www.imd.ch</a>	..	..	..	..	..	..	..	..	..	..	..	..	..
WMO	Global Insight Business Conditions and Risk Indicators	<a href="http://www.globalinsight.com">http://www.globalinsight.com</a>	0.50	0.50	0.44	0.44	0.38	0.44	0.44	0.44	0.44	0.44	0.44	0.50	0.50

## LAO PDR, 1996-2011

### Aggregate Indicator: Control of Corruption



### Individual Indicators used to construct Control of Corruption

Code	Source	Website	1996	1998	2000	2002	2003	2004	2005	2006	2007	2008	2009	2010	2011
ADB	African Development Bank Country Policy and Institutional Assessments	<a href="http://cpia.afdb.org/About.aspx">http://cpia.afdb.org/About.aspx</a>	..	..	..	..	..	..	..	..	..	..	..	..	..
AFR	Afrobarometer	<a href="http://www.afrobarometer.org">http://www.afrobarometer.org</a>	..	..	..	..	..	..	..	..	..	..	..	..	..
ASD	Asian Development Bank Country Policy and Institutional Assessments	<a href="http://www.adb.org/">http://www.adb.org/</a>	..	..	..	..	..	..	0.20	0.20	0.40	0.50	0.50	0.50	0.50
BPS	Business Enterprise Environment Survey	<a href="http://www.worldbank.org/eca/governance">http://www.worldbank.org/eca/governance</a>	..	..	..	..	..	..	..	..	..	..	..	..	..
BTI	Bertelsmann Transformation Index	<a href="http://www.bertelsmann-transformation-index.de/">http://www.bertelsmann-transformation-index.de/</a>	..	..	..	..	0.25	0.25	0.20	0.20	0.20	0.20	0.25	0.25	0.25
CCR	Freedom House Countries at the Crossroads	<a href="http://www.freedomhouse.org">http://www.freedomhouse.org</a>	..	..	..	..	..	0.23	0.23	0.23	0.23	0.23	0.23	0.23	0.23
EIU	Economist Intelligence Unit	<a href="http://www.eiu.com">http://www.eiu.com</a>	..	..	..	..	..	..	..	0.00	0.00	0.00	0.00	0.00	0.00
FRH	Freedom House	<a href="http://www.freedomhouse.org">http://www.freedomhouse.org</a>	..	..	..	..	..	..	..	..	..	..	..	..	..
GCB	Transparency International Global Corruption Barometer Survey	<a href="http://www.transparency.org">http://www.transparency.org</a>	..	..	..	..	..	..	..	..	..	..	..	..	..
GCS	World Economic Forum Global Competitiveness Survey	<a href="http://www.weforum.org">http://www.weforum.org</a>	..	..	..	..	..	..	..	..	..	..	..	..	..
GII	Global Integrity Index	<a href="http://www.globalintegrity.org/">http://www.globalintegrity.org/</a>	..	..	..	..	..	..	..	..	..	..	..	..	..
GWP	Gallup World Poll	<a href="http://www.gallupworldpoll.com">http://www.gallupworldpoll.com</a>	..	..	..	..	..	..	..	..	..	..	0.54	0.54	0.54
IFD	IFAD Rural Sector Performance Assessments	<a href="http://www.ifad.org">http://www.ifad.org</a>	..	..	..	..	..	0.56	0.53	0.53	0.53	0.45	0.45	0.45	0.49
IPD	Institutional Profiles Database	<a href="http://www.cepii.fr/">http://www.cepii.fr/</a>	..	..	..	..	..	..	..	..	..	..	0.25	0.25	0.25
LBO	Latinobarometro	<a href="http://www.latinobarometro.org">http://www.latinobarometro.org</a>	..	..	..	..	..	..	..	..	..	..	..	..	..
PIA	World Bank Country Policy and Institutional Assessments	<a href="http://www.worldbank.org">http://www.worldbank.org</a>	..	NP	NP	NP	NP	NP	0.20	0.20	0.20	0.20	0.20	0.30	0.30
PRC	Political Economic Risk Consultancy Corruption in Asia	<a href="http://www.asiarisk.com/">http://www.asiarisk.com/</a>	..	..	..	..	..	..	..	..	..	..	..	..	..
PRS	Political Risk Services International Country Risk Guide	<a href="http://www.prsgroup.com">http://www.prsgroup.com</a>	..	..	..	..	..	..	..	..	..	..	..	..	..
VAB	Vanderbilt University Americas Barometer Survey	<a href="http://www.lapopsurveys.org">http://www.lapopsurveys.org</a>	..	..	..	..	..	..	..	..	..	..	..	..	..
WCY	Institute for management & development World Competitiveness Yearbook	<a href="http://www.imd.ch">http://www.imd.ch</a>	..	..	..	..	..	..	..	..	..	..	..	..	..
WMO	Global Insight Business Conditions and Risk Indicators	<a href="http://www.globalinsight.com">http://www.globalinsight.com</a>	0.38	0.38	0.38	0.38	0.38	0.26	0.25	0.25	0.25	0.25	0.25	0.25	0.25