

**KINGSTON UNIVERSITY STUDENT NUMBERS  
01 December 2011 Census - 2011/2 Academic Year**

The attached pages provide a summary profile of Kingston University's student population from the 01 December 2011 Census - the traditional Higher Education census date.

The Census data is extracted from the University Student Records System and corresponds to the HEFCE Higher Education Students' Early Statistics (HESES) Survey census date.

**Students excluded:** Students in Faculty of Health & Social Care Sciences, a joint faculty of Kingston University and St George's University of London (SGUL), who are registered students of SGUL; Dormant students; Research Students who are writing-up their thesis; Students studying for the whole of their programme overseas; Incoming exchange students; Affiliated students; Students who left the institution before 01 December 2011; Students who start in 2011/2 but after 01 December 2011.

From 2010/1 onward students finishing a spanning year of study (CS) are included in the population.

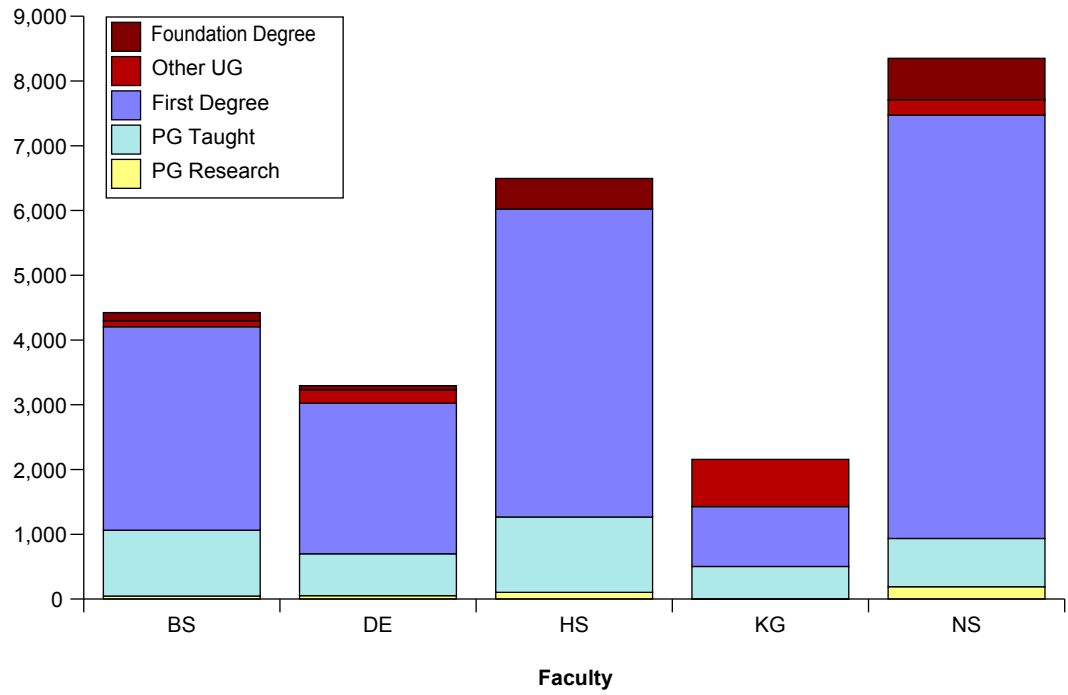
Page 2	Level & Mode by Faculty
Page 3	Summary Level & Mode; Gender by Faculty
Page 4	New Entrants by Level & Faculty
Page 5	Age on Entry
Page 6	Ethnicity
Page 7	Disability
Page 8/9	Fee Status
Page 10	Main University Sites
Page 11	UK Study Locations
Page 12	Geographical Area of Permanent Domicile
Page 13	Overseas Students Permanent Domicile

# Census Student Summary - Level & Mode by Faculty - 1st December 2011

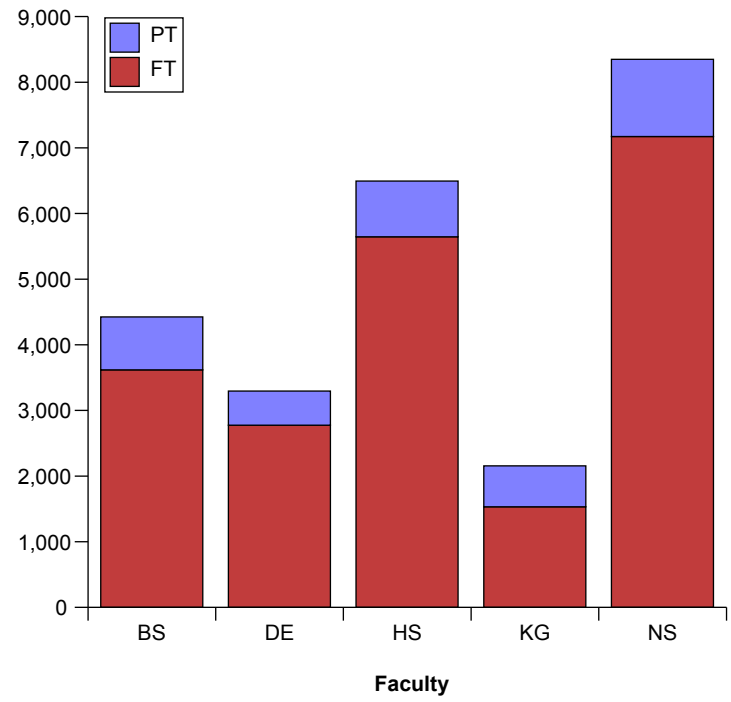
Faculty	Level of Study					Grand Total
	Foundation Degree	Other UG	First Degree	PG Taught	PG Research	
Art, Design & Architecture (DE)	63	209	2,323	647	53	3,295
Arts & Social Sciences (HS)	471	1	4,756	1,163	104	6,495
Business & Law (BS)	131	88	3,142	1,016	47	4,424
Health & Social Care Sciences (KG)	-	728	925	497	6	2,156
Sci, Eng & Comp (NS)	637	240	6,537	746	190	8,350
<b>Grand Total</b>	<b>1,302</b>	<b>1,266</b>	<b>17,683</b>	<b>4,069</b>	<b>400</b>	<b>24,720</b>

Faculty	Mode		Grand Total
	FT	PT	
Art, Design & Architecture (DE)	2,776	519	3,295
Arts & Social Sciences (HS)	5,645	850	6,495
Business & Law (BS)	3,618	806	4,424
Health & Social Care Sciences (KG)	1,532	624	2,156
Sci, Eng & Comp (NS)	7,174	1,176	8,350
<b>Grand Total</b>	<b>20,745</b>	<b>3,975</b>	<b>24,720</b>

**Student Numbers by Level**



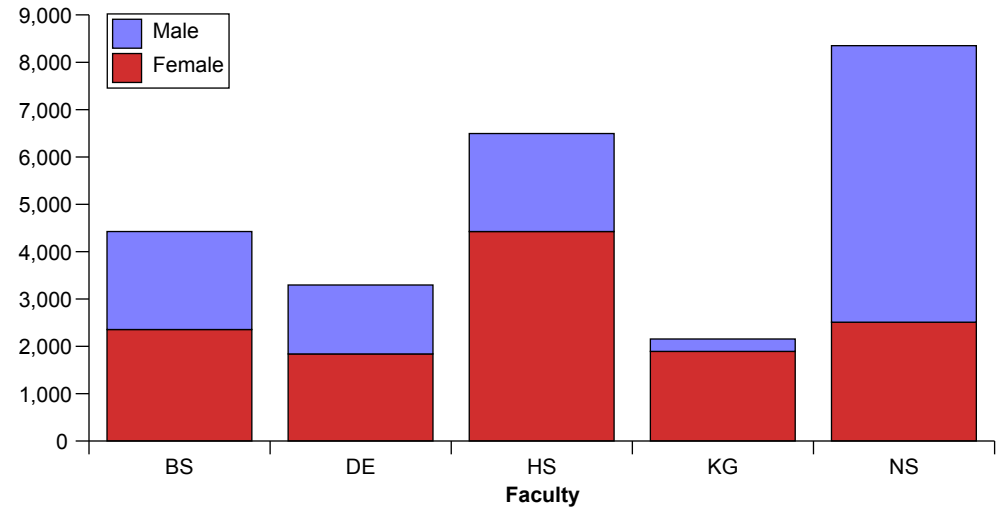
**Student Numbers by Mode**



# Census Student Summary - Gender, Level & Mode 1st December 2011

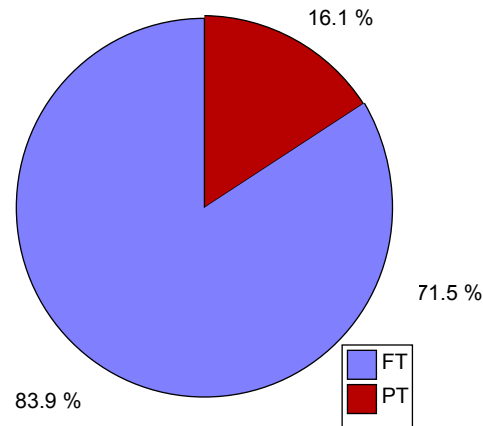
Faculty	Gender		Grand Total
	Female	Male	
Art, Design & Architecture (DE)	1,839	1,456	3,295
Arts & Social Sciences (HS)	4,425	2,070	6,495
Business & Law (BS)	2,357	2,067	4,424
Health & Social Care Sciences (KG)	1,893	263	2,156
Sci, Eng & Comp (NS)	2,511	5,839	8,350
<b>Grand Total</b>	<b>13,025</b>	<b>11,695</b>	<b>24,720</b>

### Student Numbers by Gender

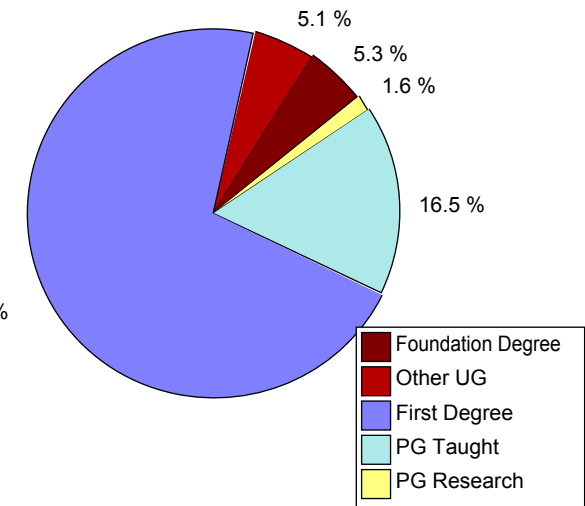


Level	Mode		Grand Total
	FT	PT	
Foundation Degree	1,217	85	1,302
Other UG	1,220	46	1,266
First Degree	15,951	1,732	17,683
PG Taught	2,082	1,987	4,069
PG Research	275	125	400
<b>Grand Total</b>	<b>20,745</b>	<b>3,975</b>	<b>24,720</b>

### Student Numbers by Mode



### Student Numbers by Level

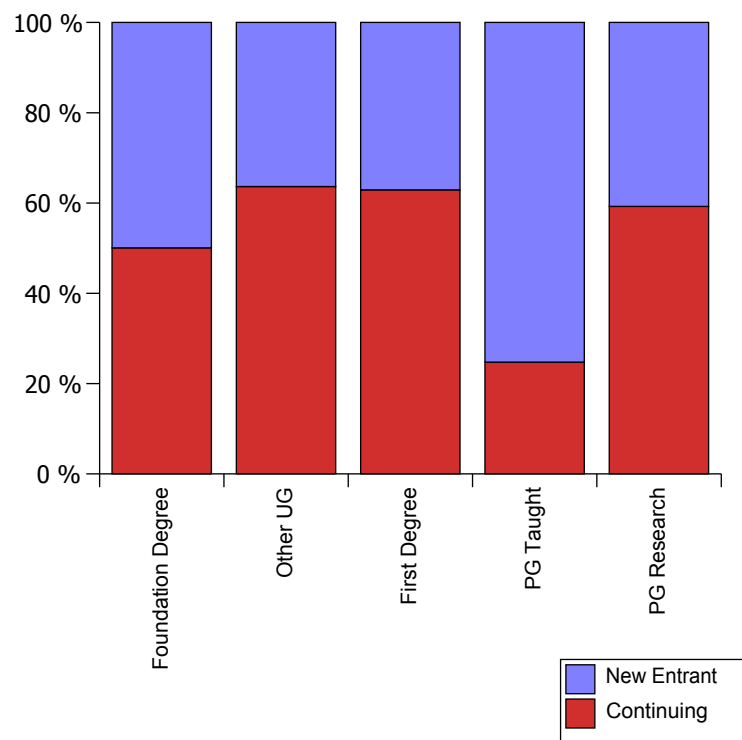


## Census Student Summary - New Entrants by Level & Faculty - 1st December 2011

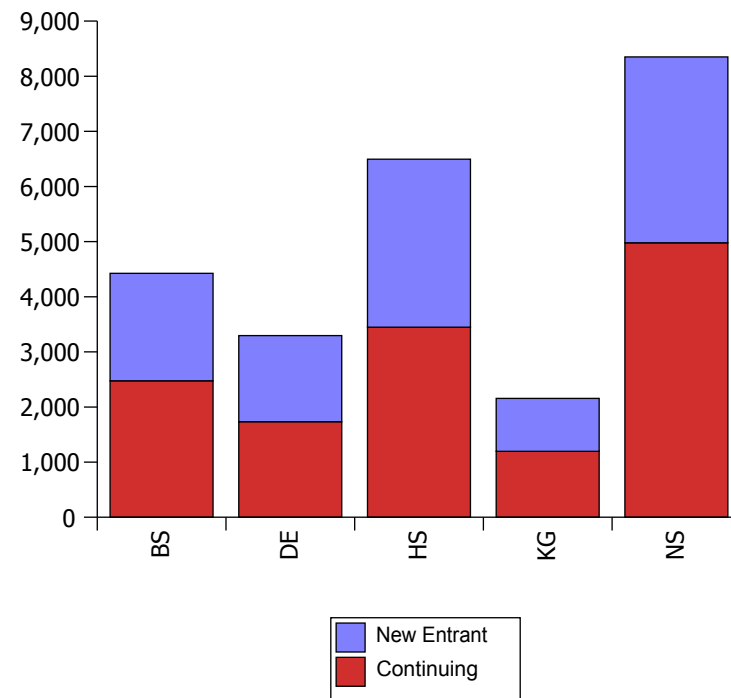
Faculty	Level of Study					Grand Total
	Foundation Degree	Other UG	First Degree	PG Taught	PG Research	
<b>Continuing</b>	652	806	11,128	1,008	237	<b>13,831</b>
<b>New Entrant</b>	650	460	6,555	3,061	163	<b>10,889</b>
<b>Grand Total</b>	<b>1,302</b>	<b>1,266</b>	<b>17,683</b>	<b>4,069</b>	<b>400</b>	<b>24,720</b>

Faculty	New Entrants		Grand Total
	Continuing	New Entrant	
<b>Art, Design &amp; Architecture (DE)</b>	1,733	1,562	<b>3,295</b>
<b>Arts &amp; Social Sciences (HS)</b>	3,447	3,048	<b>6,495</b>
<b>Business &amp; Law (BS)</b>	2,475	1,949	<b>4,424</b>
<b>Health &amp; Social Care Sciences (KG)</b>	1,196	960	<b>2,156</b>
<b>Sci, Eng &amp; Comp (NS)</b>	4,980	3,370	<b>8,350</b>
<b>Grand Total</b>	<b>13,831</b>	<b>10,889</b>	<b>24,720</b>

**New Entrants by Level**



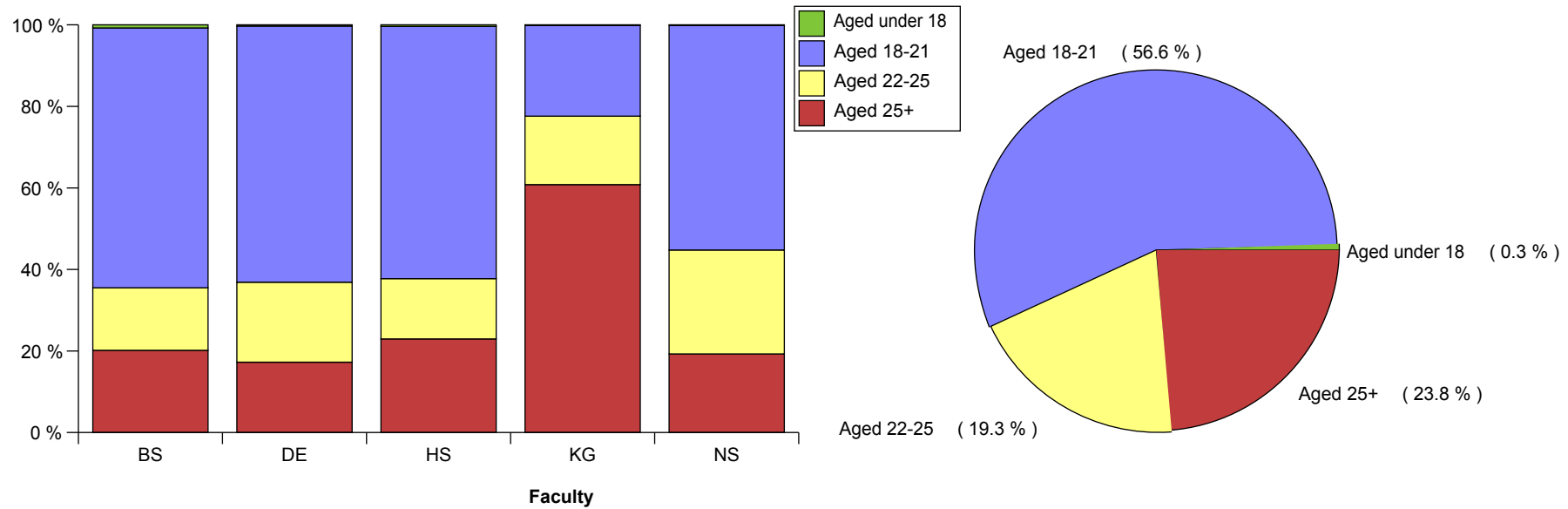
**New Entrants**



## Census Student Summary - Age on Entry Profile - 1st December 2011

Faculty	Age on Entry				Grand Total
	Aged under 18	Aged 18-21	Aged 22-25	Aged 25+	
Art, Design & Architecture (DE)	10	2,070	646	569	3,295
Arts & Social Sciences (HS)	25	4,018	961	1,491	6,495
Business & Law (BS)	33	2,820	679	892	4,424
Health & Social Care Sciences (KG)	3	480	362	1,311	2,156
Sci, Eng & Comp (NS)	13	4,599	2,127	1,611	8,350
<b>Grand Total</b>	<b>84</b>	<b>13,987</b>	<b>4,775</b>	<b>5,874</b>	<b>24,720</b>

**Student Numbers by Age on Entry**

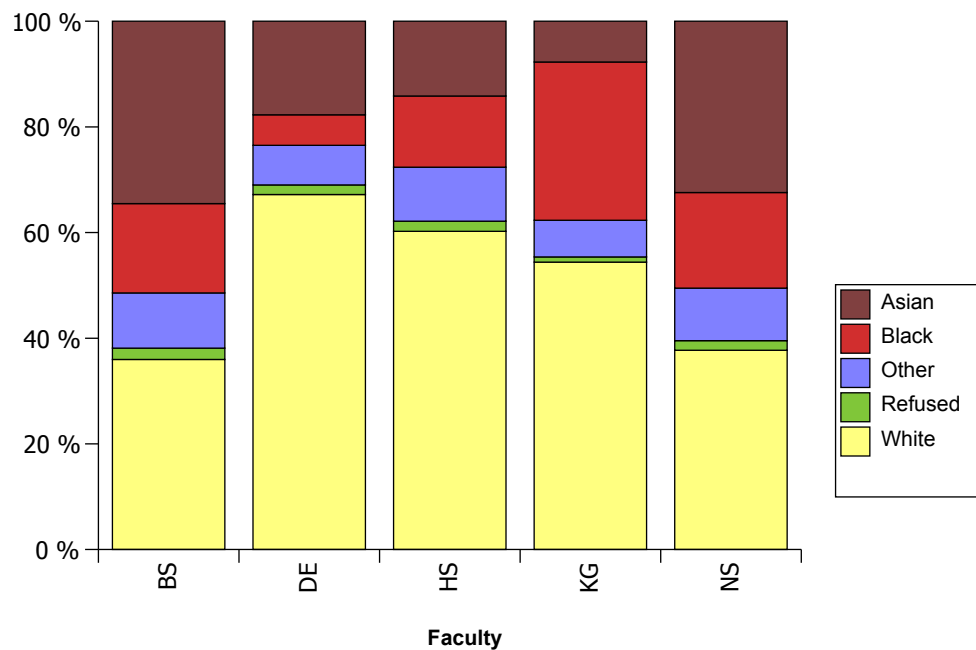


# Census Student Summary - Ethnicity Profile - 1st December 2011

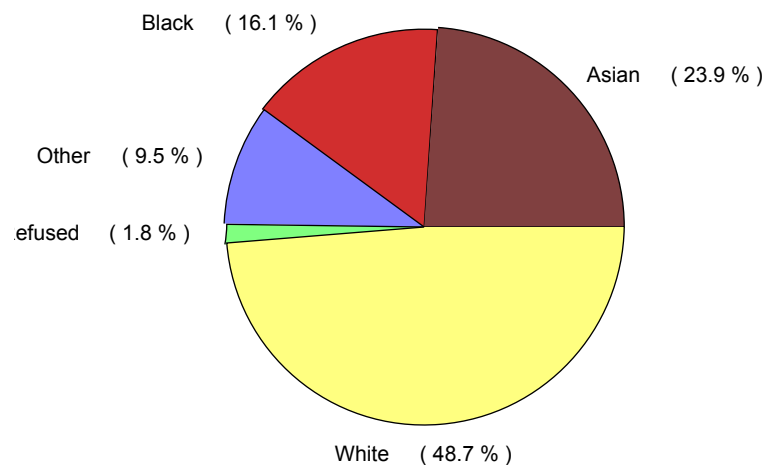
**Ethnicity Profile**

Faculty	Asian	Black	Other	Refused	White	Grand Total
<b>Art, Design &amp; Architecture (DE)</b>	583	191	247	60	2,214	<b>3,295</b>
<b>Arts &amp; Social Sciences (HS)</b>	919	876	663	124	3,913	<b>6,495</b>
<b>Business &amp; Law (BS)</b>	1,527	748	462	95	1,592	<b>4,424</b>
<b>Health &amp; Social Care Sciences (KG)</b>	166	646	150	21	1,173	<b>2,156</b>
<b>Sci, Eng &amp; Comp (NS)</b>	2,707	1,512	830	151	3,150	<b>8,350</b>
<b>Grand Total</b>	<b>5,902</b>	<b>3,973</b>	<b>2,352</b>	<b>451</b>	<b>12,042</b>	<b>24,720</b>

**Student Numbers by Ethnicity**



**Overall University Ethnicity Profile**

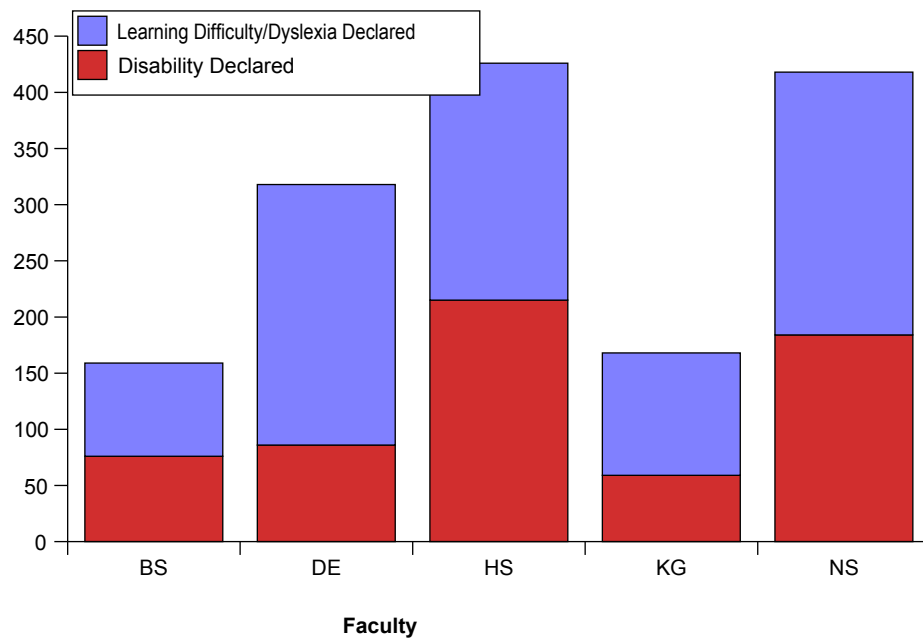


# Census Student Summary - Disability Profile - 1st December 2011

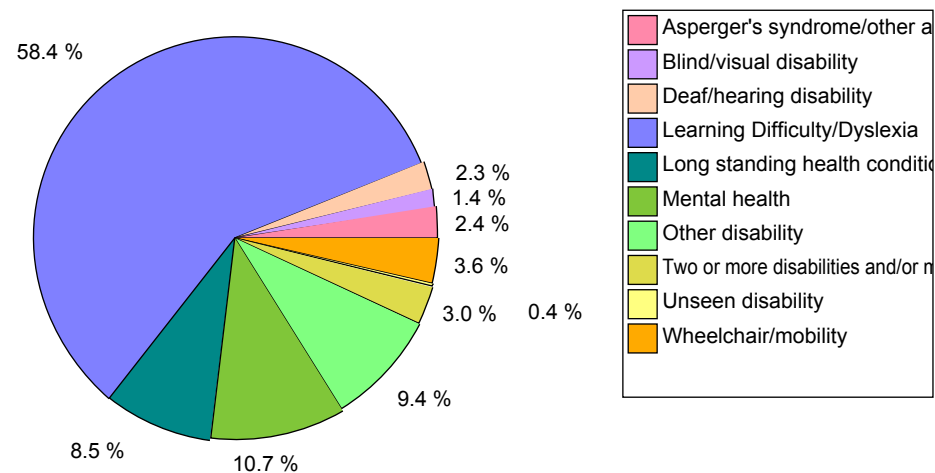
Disability Profile			
Faculty	Disability Declared	Learning Difficulty/Dyslexia Declared	Grand Total
Art, Design & Architecture (DE)	86	232	318
Arts & Social Sciences (HS)	215	211	426
Business & Law (BS)	76	83	159
Health & Social Care Sciences (KG)	59	109	168
Sci, Eng & Comp (NS)	184	234	418
<b>Grand Total</b>	<b>620</b>	<b>869</b>	<b>1,489</b>

Disability Profile (declared only)	
Disability	Total
Asperger's syndrome/other autistic disorder	35
Blind/visual disability	21
Deaf/hearing disability	34
Learning Difficulty/Dyslexia	869
Long standing health condition such as cancer/HIV	126
Mental health	160
Other disability	140
Two or more disabilities and/or medical condition	44
Unseen disability	6
Wheelchair/mobility	54
<b>Grand Total</b>	<b>1,489</b>

**Student Numbers - Declared Disabilities**



**Declared Disabilities Proportion**

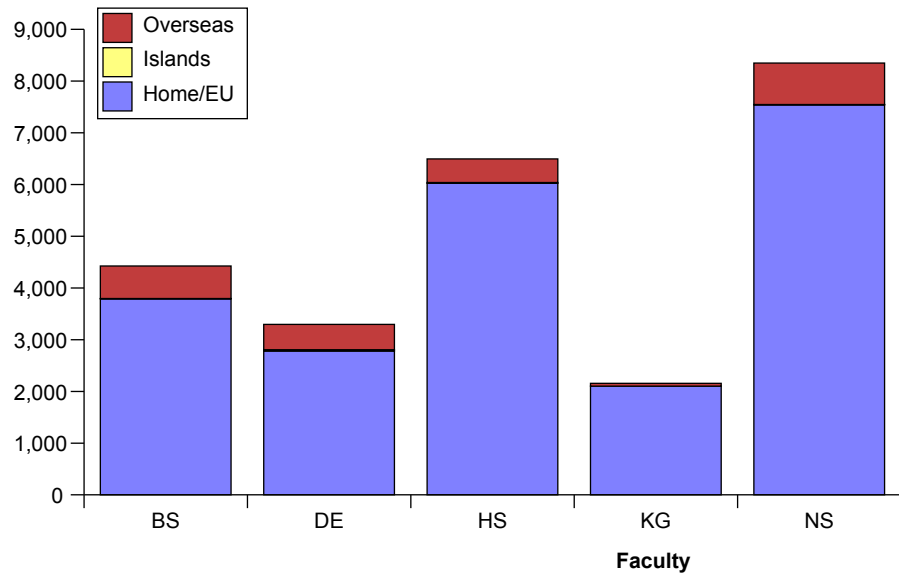


# Census Student Summary - Fee Status Profile - 1st December 2011

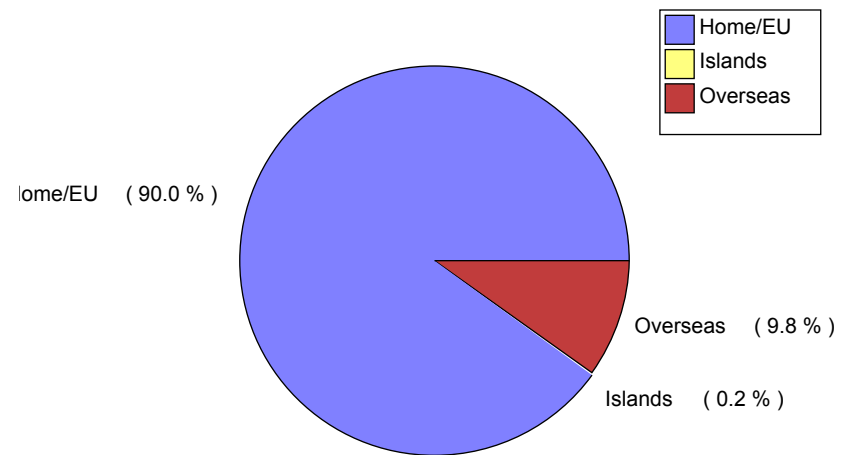
Fee Status*				
Faculty	Home/EU	Islands	Overseas	Grand Total
Art, Design & Architecture (DE)	2,781	25	489	<b>3,295</b>
Arts & Social Sciences (HS)	6,024	14	457	<b>6,495</b>
Business & Law (BS)	3,791	4	629	<b>4,424</b>
Health & Social Care Sciences (KG)	2,102	1	53	<b>2,156</b>
Sci, Eng & Comp (NS)	7,543	4	803	<b>8,350</b>
<b>Grand Total</b>	<b>22,241</b>	<b>48</b>	<b>2,431</b>	<b>24,720</b>

\* ELQ Students grouped within Home/EU

### Student Numbers by Fee Status and Faculty



### Student Numbers by Fee Status





# Census Student Summary - Fee Status by Level Summary - 1st December 2011

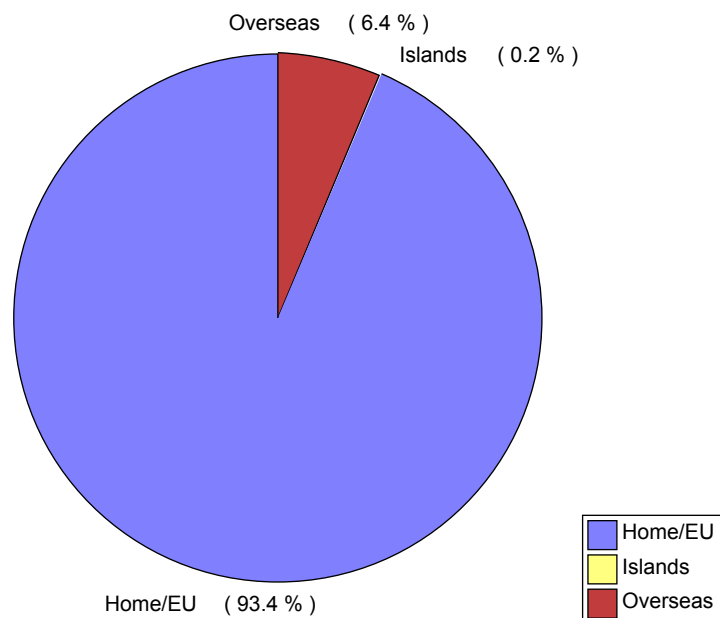
**Fee Status\***

Level	Home/EU	Islands	Overseas	Grand Total
UG	18,907	48	1,296	<b>20,251</b>
PG	3,334	-	1,135	<b>4,469</b>
<b>Grand Total</b>	<b>22,241</b>	<b>48</b>	<b>2,431</b>	<b>24,720</b>

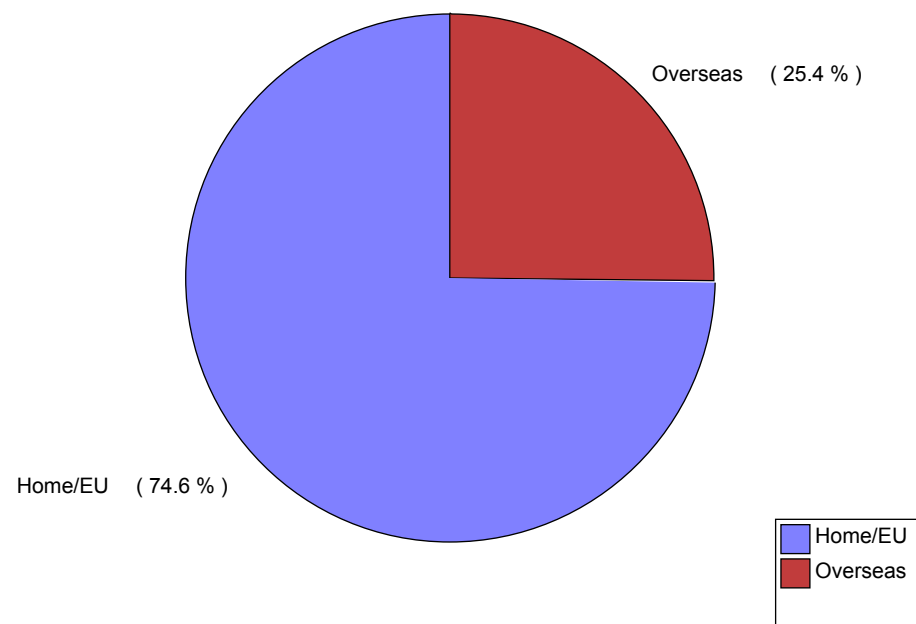
\* ELQ Students grouped within Home/EU

Level		Home/EU	Islands	Overseas	Grand Total
UG	New Entrant	7,150	22	493	<b>7,665</b>
UG	Continuing	11,757	26	803	<b>12,586</b>
PG	New Entrant	2,272	-	952	<b>3,224</b>
PG	Continuing	1,062	-	183	<b>1,245</b>
<b>Grand Total</b>		<b>22,241</b>	<b>48</b>	<b>2,431</b>	<b>24,720</b>

### Undergraduate Fee Status



### Postgraduate Fee Status

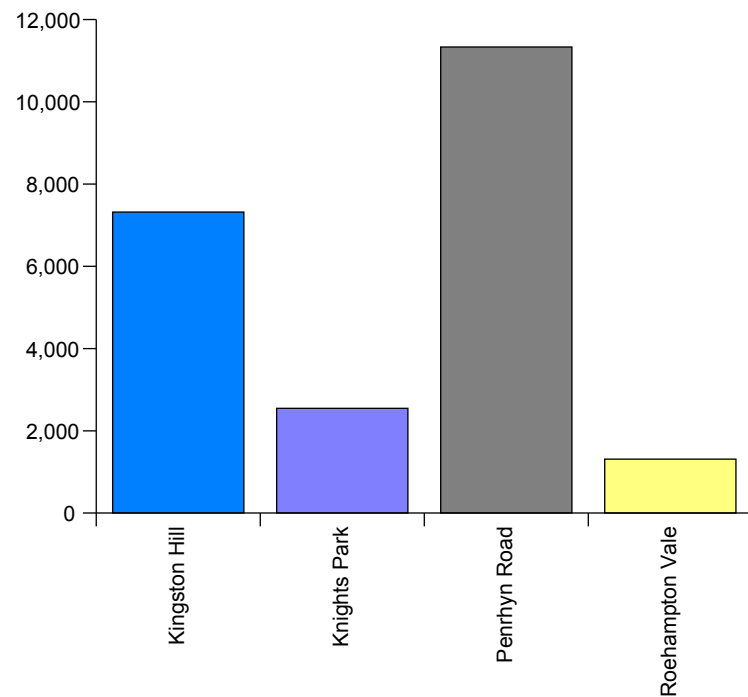


## Census Student Summary - University Main Sites - 1st December 2011

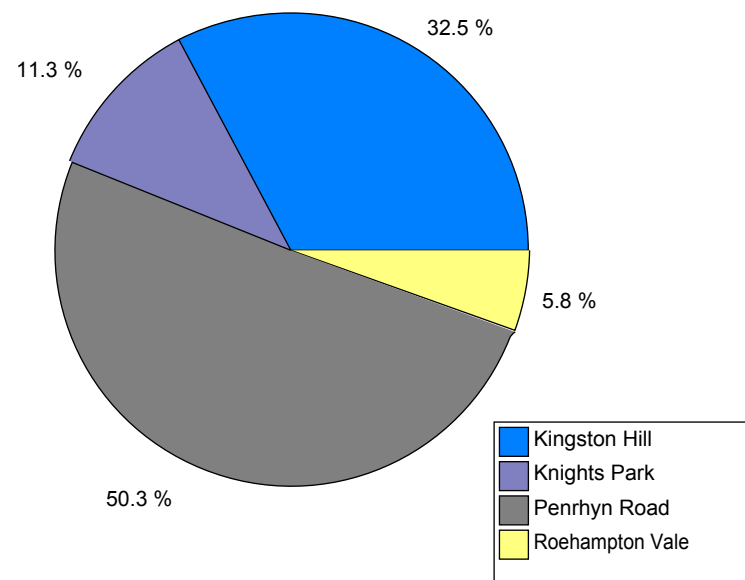
University Site	Grand Total
Kingston Hill	7,321
Knights Park	2,547
Penrhyn Road	11,333
Roehampton Vale	1,310
<b>Grand Total</b>	<b>22,511</b>

Faculty	Kingston College	Other UK	University Sites	Grand Total
Art, Design & Architecture (DE)	25	70	3,200	<b>3,295</b>
Arts & Social Sciences (HS)	148	352	5,995	<b>6,495</b>
Business & Law (BS)	310	231	3,883	<b>4,424</b>
Health & Social Care Sciences (KG)	-	-	2,156	<b>2,156</b>
Sci, Eng & Comp (NS)	372	701	7,277	<b>8,350</b>
<b>Grand Total</b>	<b>855</b>	<b>1,354</b>	<b>22,511</b>	<b>24,720</b>

**Student Numbers by Site**



**Student Numbers - Site Proportion**



**Census Student Summary - UK Locations - 1st December 2011**

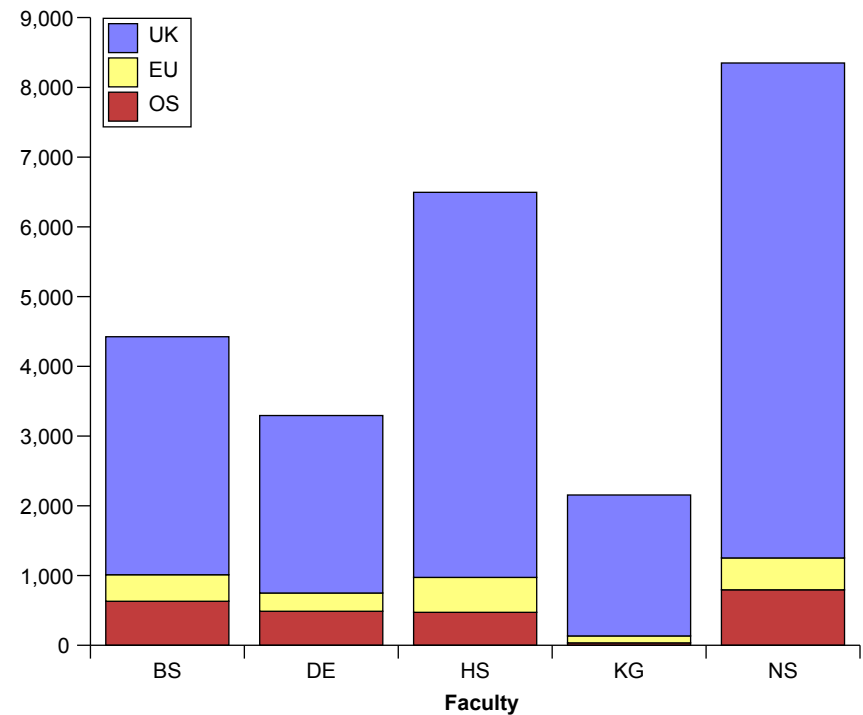
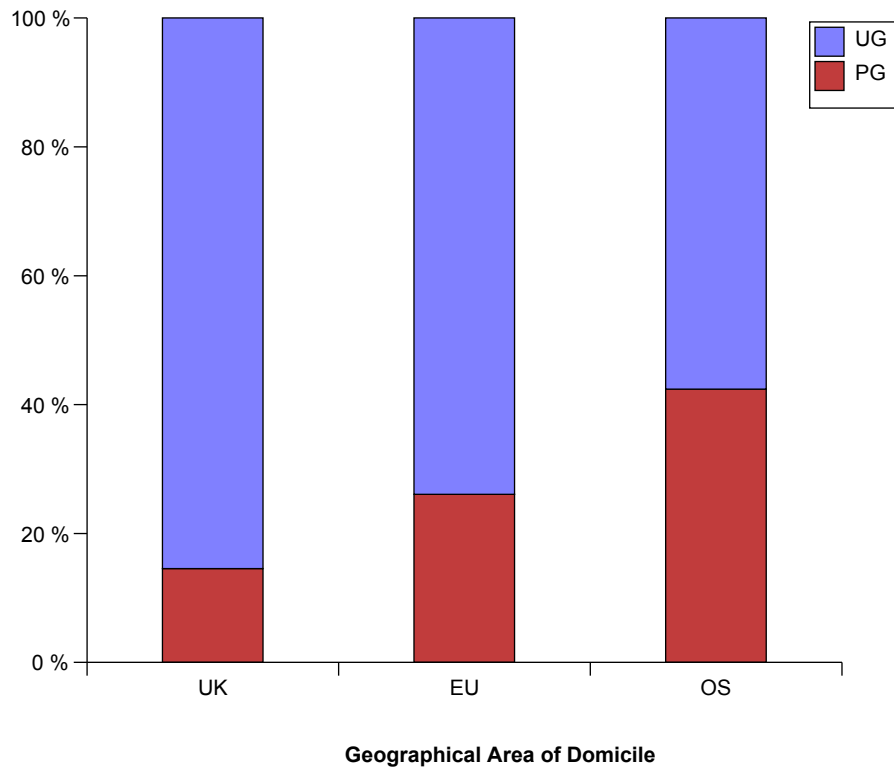
	Kingston College	Other UK	University Sites	Grand Total
Arborfield, Royal Electrical and Mechanical Eng	-	14	-	14
British Airways	-	2	-	2
Brooklands College	-	29	-	29
Building Crafts College	-	17	-	17
Capita Learning & Development	-	10	-	10
City of Bristol College	-	5	-	5
Cranwell - RAF Training Centre	-	15	-	15
Design Museum	-	32	-	32
Eastwood Park Ltd	-	52	-	52
European Pilot Training Academy	-	39	-	39
Exeter College	-	49	-	49
HMS Sultan	-	221	-	221
Kingston College	855	-	-	855
Kingston Hill	-	-	7,321	7,321
KLM UK Engineering Ltd	-	87	-	87
Knights Park	-	-	2,547	2,547
Marshalls Aerospace Cambridge	-	51	-	51
Newcastle College	-	87	-	87
Newham Training and Education Centre	-	65	-	65
North East Surrey College of Technology (NESCOT)	-	38	-	38
Penrhyn Road	-	-	11,333	11,333
Richmond Adult & Community College	-	20	-	20
Richmond College	-	218	-	218
Roehampton Vale	-	-	1,310	1,310
South Thames (Merton Campus)	-	51	-	51
South Thames (Wandsworth Campus)	-	60	-	60
Spelthorne College	-	19	-	19
Surrey Children's Services, Surrey County Council	-	34	-	34
Veolia - Staines	-	13	-	13
West Thames College	-	68	-	68
Whitefields School	-	58	-	58
	855	1,354	22,511	24,720

## Census Student Summary - Geographical Area of Domicile - 1st December 2011

Geographical Area of Domicile				
Level	UK	EU	OS	Grand Total
<b>PG</b>	2,997	443	1,029	<b>4,469</b>
<b>UG</b>	17,599	1,255	1,397	<b>20,251</b>
<b>Grand Total</b>	<b>20,596</b>	<b>1,698</b>	<b>2,426</b>	<b>24,720</b>

Geographical Area of Domicile				
Faculty	UK	EU	OS	Grand Total
<b>Art, Design &amp; Architecture (DE)</b>	2,545	262	488	<b>3,295</b>
<b>Arts &amp; Social Sciences (HS)</b>	5,521	501	473	<b>6,495</b>
<b>Business &amp; Law (BS)</b>	3,412	380	632	<b>4,424</b>
<b>Health &amp; Social Care Sciences (KG)</b>	2,021	99	36	<b>2,156</b>
<b>Sci, Eng &amp; Comp (NS)</b>	7,097	456	797	<b>8,350</b>
<b>Grand Total</b>	<b>20,596</b>	<b>1,698</b>	<b>2,426</b>	<b>24,720</b>

**Student Numbers by Geographical Area of Domicile**



## Census Student Summary - Non-UK Domiciles - 1st December 2011

India	277	Denmark	20	Sierra Leone	5
Greece	269	Jordan	20	Somalia	5
Norway	231	Zimbabwe	19	Tanzania	5
Cyprus (European Union)	210	Lebanon	18	Trinidad and Tobago	5
Ireland	162	Czech Republic	17	Turks and Caicos Islands	5
Germany	147	Finland	17	Macao	4
China	136	South Africa	17	Morocco	4
United States of America	135	Slovakia	16	Palestine	4
Italy	115	Afghanistan	15	Cameroon	3
Nigeria	113	Hungary	15	Chile	3
Bulgaria	101	Estonia	14	Cyprus (Non-European Union)	3
Iran	97	Brazil	13	Ecuador	3
France	90	Ghana	13	Ethiopia	3
Korea (South)	90	Indonesia	13	Malawi	3
Hong Kong	85	Luxembourg	12	Moldova	3
United Arab Emirates	80	Uganda	12	Montenegro	3
Sri Lanka	73	Iraq	10	St Lucia	3
Saudi Arabia	69	Kenya	10	Turkmenistan	3
Pakistan	67	Syria	10	Anguilla	2
Spain	62	Australia	9	Bahamas	2
Turkey	61	Kazakhstan	9	Cayman Islands	2
Romania	58	Kuwait	9	Georgia	2
Russia	57	Singapore	9	Grenada	2
Thailand	57	Ukraine	9	Guyana	2
Lithuania	55	Albania	8	Iceland	2
Sweden	55	Belarus	8	Kosovo	2
Poland	54	Libyan AR	8	Macedonia	2
Taiwan	44	Mexico	8	Montserrat	2
Gibraltar	39	Azerbaijan	7	Mozambique	2
Mauritius	38	British Virgin Islands	7	Slovenia	2
Portugal	36	Gambia	7	St Vincent	2
Japan	34	Venezuela	7	Sudan	2
Netherlands	33	Angola	6	Zambia	2
Canada	32	Barbados	6	Antigua and Barbuda	1
Latvia	30	Burma	6	Argentina	1
Malaysia	29	Colombia	6	Asia (Except Middle East), not otherwise specified	1
Austria	28	Jamaica	6	Bolivia	1
Belgium	28	Philippines	6	Botswana	1
Bangladesh	25	Serbia	6	Burundi	1
Malta	25	Algeria	5	Dominica	1
Qatar	25	Bahrain	5	El Salvador	1
Nepal	23	Brunei	5	Equatorial Guinea	1
Switzerland	23	Egypt	5	Eritrea	1
Bermuda	22	Maldiv Islands	5	Guinea	1
Vietnam	21	Oman	5	Israel	1

**Census Student Summary - Non-UK Domiciles - 1st December 2011**

Korea DRY (North)	1
Lesotho	1
Madagascar	1
Mali	1
Mongolia	1
Namibia	1
Netherlands Antilles	1
New Zealand	1
Papua New Guinea	1
Peru	1
Puerto Rico	1
Senegal	1
Seychelles	1
Tunisia	1
United States Virgin Islands	1
Uruguay	1
<b>Grand Total</b>	<b>4,124</b>