

Iowa's New Interstate Rest Areas



Mark Masteller
Chief Landscape Architect
Iowa Department of Transportation
800 Lincoln Way
Ames, IA 50010
515-239-1424

The Need

Iowa's original interstate rest areas were designed and built in the 1960's. Traffic volumes have far exceeded the buildings original design capacity. Facilities have been repaired and remodeled many times. Multiple structures have been added over the years to house new services. The need to replace these buildings became evident.



Rest Area Building

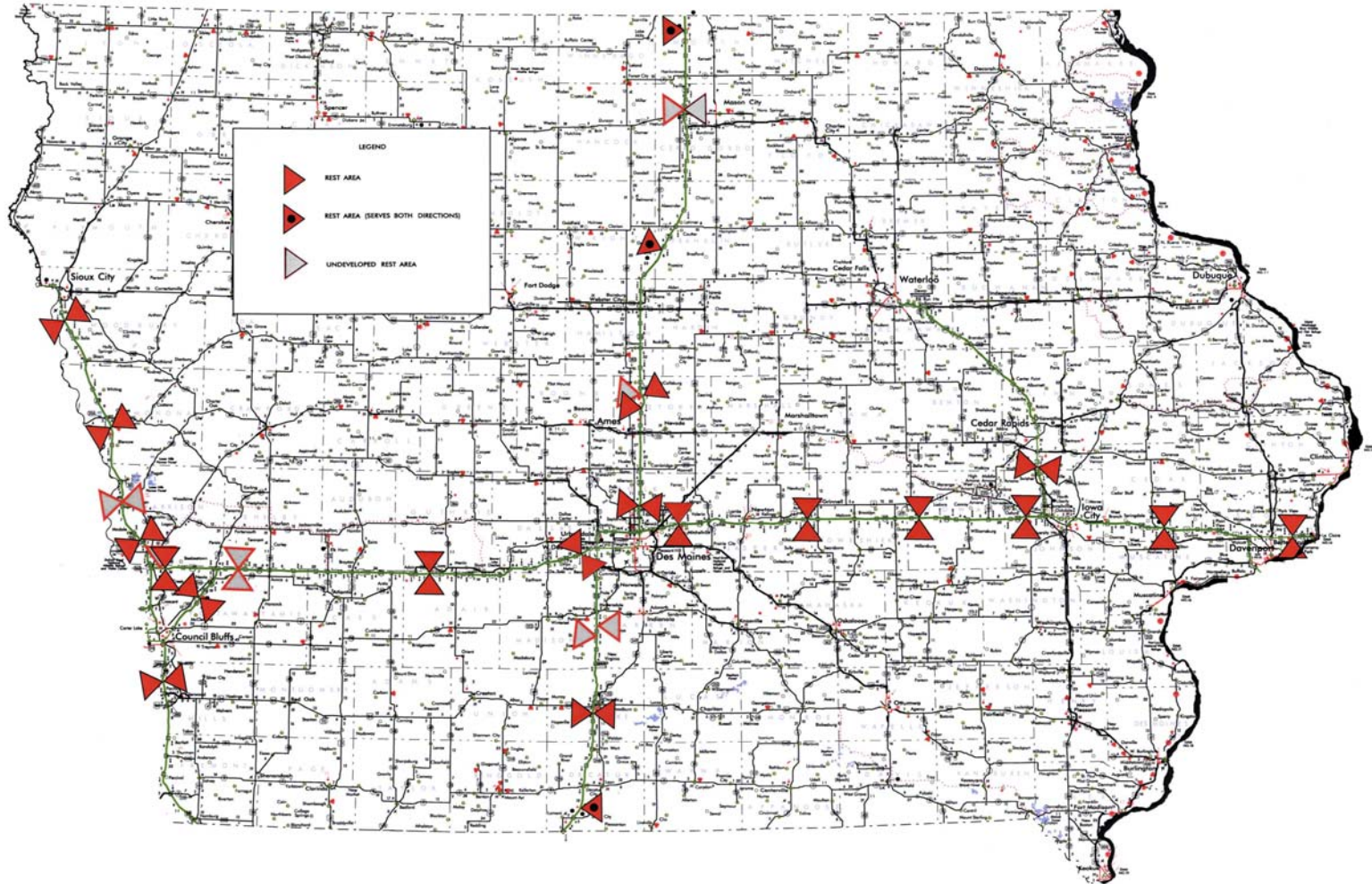


Welcome Center



Vending Shelter

Iowa's Interstate Rest Area System



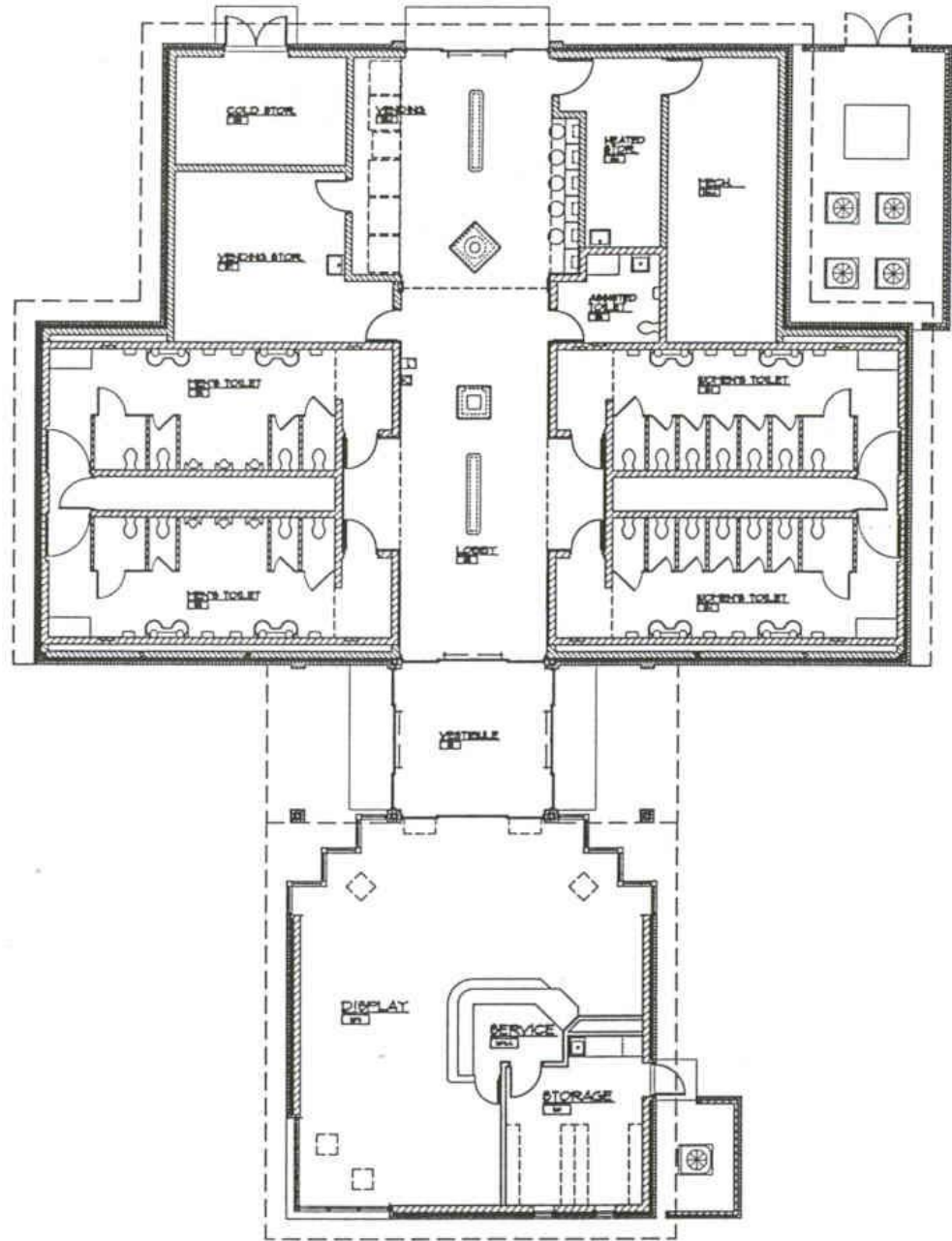
Goals

- Use the opportunity to educate people about Iowa and the area they are traveling through.
- Give a positive impression to visitors. It may be their only stop in the state.
- Re-invigorate the driver by stimulating their mind.
- Use multidisciplinary teams that includes engineers, architects, landscape architects, and artists through every phase of development.

Goals

- Construct one building to house the items that were previously found in separate buildings. These include restrooms, vending facilities, weather information, motorist information, tourist information, phones, drinking fountains, storage, and necessary maintenance facilities.
- Keep the same basic footprint for each building to increase the comfort level of visitors.
- Make the building open, light, and airy to help visitors relax and improve safety.

Rest Area Building Prototype Floor Plan





Jasper County – Pioneer Theme



Lobby Area

**Examples of
photos and
text artwork
incorporated
in the walls
in the Jasper
County Rest
Area Lobby**





**Cedar County Rest Area with a Welcome
Center – Harvest Theme**



Sculptural Elements in Cedar County



Rest Area Lobby with Art Element



Johnson County – Educational Theme



Stacked Books Art Element – Terra Cotta



Book Titles relate to Iowa and the Local Area



Woodbury County – Lewis and Clark Expedition Theme



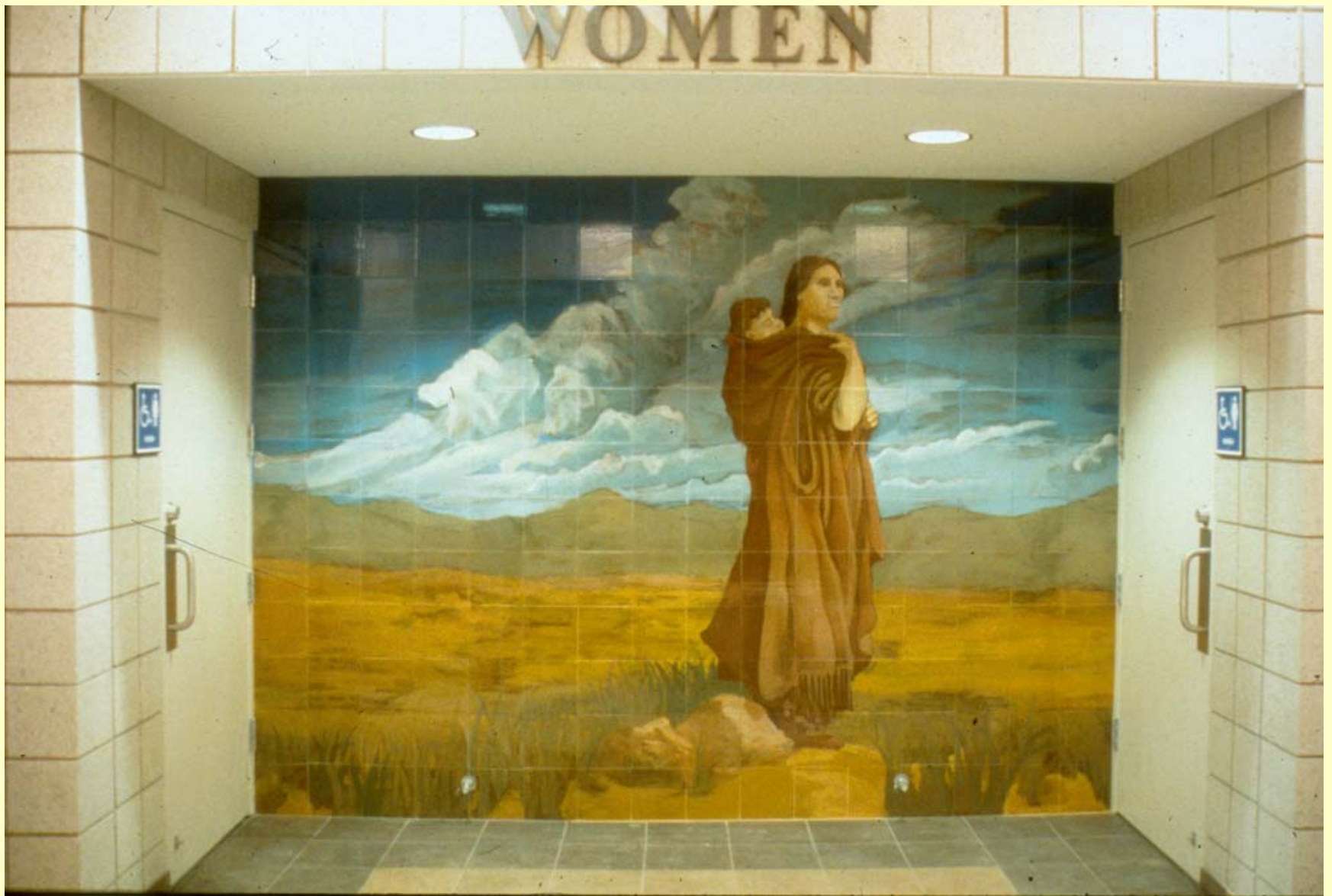
Text Blocks and Art Blocks in Masonry



Lewis and Clark Rest Area Entrance

Mural and Floor Tile Design in Lobby





Wall Mural of the Lewis and Clark Expedition



Picnic Shelters use the same Design Elements as the Building Architecture



**Decatur County – Art Theme of the Four
Native Vegetative Communities on the Site.**



Gateway to River/Oxbow Overlook



**Pedestrian Gateway to the Lakefront in an
Adjacent County Park.**



Pedestrian Plaza in the Center of the Picnic Grounds

View of Lake through the Gateway





Scott County – Mississippi River Theme



Artwork that Resembles A River Bridge Structure



Lighting with River Dock Features



Picnic Shelters Architecturally match the Building



**US Army Corps of Engineers Marker inset in
Terrazzo Floor**



Adair County – Agriculture/Henry Wallace Theme



Wall Mural of Henry Wallace Home



Cedar County – Underground Railroad Theme



**Windows and Roof modified to Resemble a
Train Station**



**Observation Deck at the Rear Entrance
to the Building**



**Quilt Blocks that show the Unspoken
Language of the Underground Railroad**

Interpretative Panel to Explain the Quilt Language

The Underground Railroad in Cedar County is depicted in images made of terra cotta and colorful ceramic tile, recalling the rich and meaningful patterns of historic slave and Quaker quilts. These patterns and symbols have been shared across many cultures and remain a lasting artistic tradition. It must be noted, however, that the code evolved from both literal and symbolic language; one shared through faith, spiritualism, and experience. The following guide is offered as a key to their translation and understanding.



Monkey Wrench - Get ready. Gather the tools you'll need for your journey and the necessary skills. A person or group, beyond suspicion, that would help organize the trip.



Wagon Wheel/Carpenter's Wheel - Pack provisions to begin as in packing a wagon. The wheel - "By the Grace of God."



Bear's Paw - Follow the trail of a bear through the mountains where food is available. A real trail.



Crossroads - A safe terminal, often the destination of Cleveland, Ohio.



Log Cabin - An arrival. Stay where you are, find shelter, dig in.



Shoofly - A liaison. A person who might aid in the flight.



Bow Tie (Hourglass) - To form a relationship with someone who would help. The time to meet someone. Time to change one's clothes to "fancy ware."



Flying Geese - Depart with the spring migration of geese for the north. Follow the geese along waterways.



Drunkard's Path - Zig-Zag. Don't move in a straight line.



Star/Evening Star/North Star - Let the North Star and other constellations be your compass. The North Star hung above Canada.



Nine Patch - The colors of different crops, a plantation map.



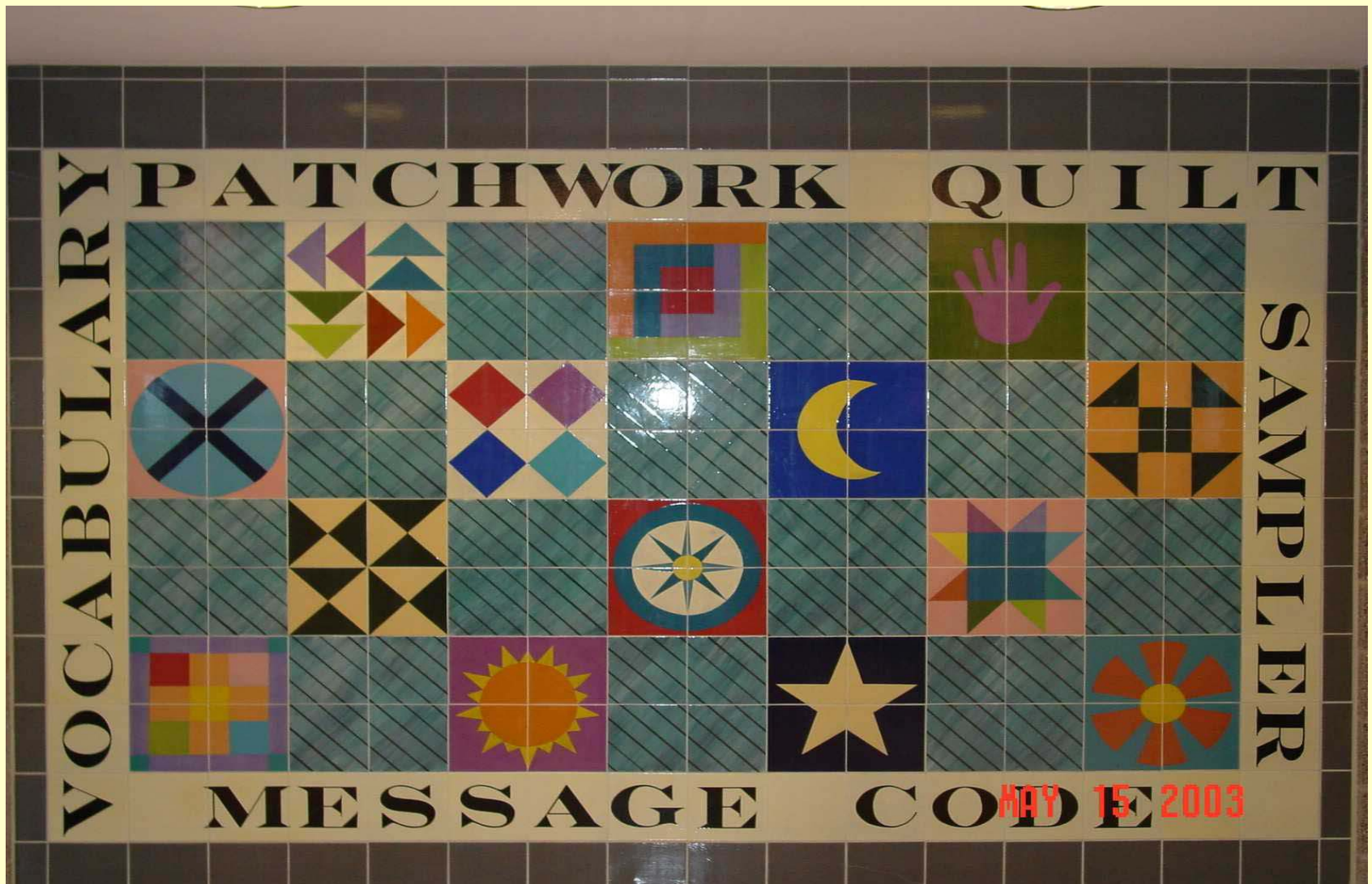
Jacob's Ladder - The route north (up) to freedom, transcendence.

This public-artwork installation was designed by artist, David B. Dahlquist, as part of the multi-disciplinary design team of French Reneker Associates (Engineers), and Yaggy Colby Associates (Architecture and Landscape Architecture). It was fabricated by the artisans of Dahlquist Clayworks' studio including: Marcy Lloyd, Rick Stewart, Brian Frederiksen, Jim Edelen, Christee Lesch, Kate Fisher, Larry Bredeson, Jennifer Erickson, Marci Nelson, Meredith Nelson, Travis Rice, and Jim Dawson (Iowa Metal Fabrication).

MAY 15 2003



**Sidewalk Pavers Designed to Give the
Impression of Railroad Tracks**



Mural in Wall Tiles



**Polk County – Theme Depicts the Transition
from Iowa's Rural to Urban Landscape**

**Backlit Art Panel
with Images of
both the
Agricultural and
Urban Landscape**





Top-of-Iowa Welcome Center A Public/Private Partnership



Lower Level is the rest area and the Upper Level has Tourist Information and A Retail Gift Shop

Top-of-Iowa Welcome Center

- **Designed, built and maintained by a private entity.**
- **Located at an interchange and serves both directions of traffic.**
- **DOT participated in the construction funding and pays a portion of the annual maintenance costs.**
- **Contains commercial store.**
- **Is signed as an official interstate rest area.**