



ADELAIDE CONVENTION CENTRE

2011 | **LGA Conference**
28-29 April | **and General Meeting**



Growing The Future



Platinum Sponsors

Norman
Waterhouse
LAWYERS

sema™

ZEN
HOME ENERGY SYSTEMS

Dinner Sponsor

Igfa
FINANCIAL SERVICES





CONTENTS

President’s Welcome..... 3

Program At A Glance 5

Conference Program 7

 Day 1 – 8.10am to 12noon7

 Day 1 – 12.30pm to 4.45pm.....9

 LGA Conference Dinner..... 11

 Day 2 13

Speaker Profiles 15

LGA Conference Initiatives..... 17

Convention Centre Map 19

Expo Floor Plan 21

Conference Notes 23

SPONSORS

The Local Government Association would like to acknowledge all of the sponsors of the 2011 LGA Conference and General Meeting.

Platinum Sponsors   

Dinner Sponsor 

Gold Sponsors   

Satchel and Lanyard Sponsor 

CONTENTS





PRESIDENT'S WELCOME

Mayor Felicity-ann Lewis

It is my very great pleasure to welcome you to the LGA's 2011 Conference and General Meeting.

Our conference comes at a very interesting and important time, in the light of recent events.

In the last 5 months Australia and other 'Pacific Rim' countries have experienced a series of natural disasters. These include flooding and storm damage in Queensland, South Australia, Victoria, New South Wales and the Northern Territory; bushfires in Western Australia; and of course the tragic earthquakes in both New Zealand and Japan.

These disasters have highlighted just how vulnerable our infrastructure and our societies are to the forces of nature. They have also shone the spotlight on the very important role which Local, State, and National Governments play in planning and designing infrastructure, meeting growth and energy needs, and leading recovery efforts in times of emergency.

However, coping with emergency management and responding to natural disasters is just one piece of a very complex puzzle.

There are a wide range of environmental, social and economic factors which together contribute to the establishment of healthy and vibrant communities. The goal for Councils is to plan and foster the development of communities which will prosper, adapt to future challenges and changes, and provide residents with a high quality of life at an affordable cost.

As always, Councils will be under close scrutiny from electors, the business sector, lobby groups, the media, other spheres of government and the wider community, to ensure that sustainable practices are adopted and the interests of future generations are not compromised.

This conference aims to explore the roles Councils play in future growth (or lack of growth) in their areas. We will consider the changing political landscape and governance issues, as well as the challenges associated with community engagement, water security, energy needs, regional development, and natural resources, among others.

We have gathered speakers from across Australia and internationally to help us focus on these issues, and I am sure they will inform, challenge and excite us with new possibilities and opportunities.

As always, there will be plenty of time to network with your Local Government colleagues from around South Australia. I urge you to make the most of this opportunity to consider and discuss the future of our State, and our sector.

Mayor Felicity-ann Lewis
LGA President



Call Today!



Benefits + Advantages = Your Finance Authority

Since 1984 we have lead the way with flexible, rewarding and risk-free financial solutions for South Australian Local Government.

LGFA Financial Services offers a range of packages that maximise the financial advantages whether your Council is looking to borrow, invest or both.

Discovering just how beneficial a tailored financial package can be is as simple as picking up the phone. What's more our expert advice is *free* for members so, why wait?

To discuss your requirements with one of our financial specialists call:

8223 1550 (Adelaide metro) **1800 188 045** (Free for country callers)

Paul Slater
CEO



Robert Hardy
Manager Treasury



Ryan Easton
Manager Lending



FINANCIAL SERVICES

Local Government Finance Authority of South Australia, 16 Hutt Street, Adelaide SA 5000

At a Glance

PROGRAM

DAY 1 - Thursday 28 April 2011

8.10am	Registration & Arrival Tea/Coffee	Foyer 5
8.55am	MC Introduction <i>Graeme Goodings</i>	Hall D
9.00am	Welcome to Country <i>Aunty Josie Agius, Kaurna Elder</i>	Hall D
9.05am	LGA President Welcome <i>Mayor Felicity-ann Lewis</i>	Hall D
9.10am	A Hard Year's Labour <i>Dr Keith Suter</i>	Hall D
10.00am	From Across the Ditch - Local Government Reform in New Zealand <i>Lawrence Yule, Hastings Mayor and LGNZ President</i>	Hall D
10.45am	Morning Tea	Halls B & C
11.15am	ACELG Report on Local Government Reform in Australia <i>Graham Sansom</i>	Hall D
12 noon	Panel Discussion	Hall D
12.30pm	Lunch Launch of 'Environmental Calculator' and Presentation of Public & Environmental Health Council Awards	Hall E
2.00pm	South Australia's Demographic Landscape and the Challenges for Local Government <i>Graeme Hugo</i>	Hall D
2.45pm	Collaborative Consumption: Building Strong, Sustainable Communities <i>Rachel Botsman</i>	Hall D
3.30pm	Afternoon Tea	Halls B & C
4.00pm	The Tension Between Growth and Sustainability <i>Jon Dee</i>	Hall D
4.45pm	Close	Hall D
6.30pm	Pre-dinner Drinks	Foyer 1
7.00pm	LGA Conference Dinner	Hall E

DAY 2 - Friday 29 April 2011

8.15am	Registration & Coffee	Foyer 5
9.00am	LGA President Welcome <i>Mayor Felicity-ann Lewis</i>	Hall D
9.05am	Keeping the Lights On - the Irrefutable Case for Nuclear Energy <i>Ben Heard</i>	Hall D
10.00am	LGA General Meeting	Hall D
10.30am	Morning Tea	Halls B & C
10.45am	LGA General Meeting Continues Declaration of Presidential and State Executive Committee Election Results at the conclusion of the General Meeting	Hall D
1.00pm	Closing Lunch	Hall E
2.30pm	Close	Hall E

Counsel for Councils.

Norman Waterhouse understands that Local Government is big business with even bigger responsibilities.

We view ourselves not just as a legal service provider but as a strategic business partner to Local Government in South Australia. Our goal is to provide a practical business solution as well as a legal one.

The Norman Waterhouse Local Government Services team comprises over 30 practitioners who specialise in the following areas:

**Environment • Risk Management •
Planning • Property & Commercial •
Procurement • Asset Management •
Employment & Industrial Relations •
Local Government Advisory & Regulatory**

In fact, there is virtually no area that Norman Waterhouse does not cover when it comes to meeting the needs of Local Government.

We also provide expert and tailored training to clients as well as a whole host of other benefits.

If your council needs counsel, we are your one stop shop.

CONFERENCE PROGRAM

DAY 1

Thursday 28 April 2011

8.10am	Registration & Arrival Tea/Coffee
8.55am	MC Introduction <i>Graeme Goodings</i>
9.00am	Welcome to Country <i>Aunty Josie Agius, Kaurna Elder</i>
9.05am	LGA President Welcome <i>Mayor Felicity-ann Lewis</i>
9.10am	A Hard Year's Labour <i>Dr Keith Suter</i>
	This session is intended to set the scene for the speakers to follow. Dr Suter will outline Australia's recent political 'landscape', and consider what challenges the future may hold for Local Government in the context of National and State political trends.
10.00am	From Across the Ditch - Local Government Reform in New Zealand <i>District Council of Hastings Mayor and LGNZ President, Lawrence Yule</i>
	Mayor Yule will provide delegates with a fascinating international perspective on Local Government Reform, sharing his experiences on recent changes to New Zealand Councils, both as a Council Mayor and as the President of Local Government New Zealand.
10.45am	Morning Tea
11.15am	ACELG Report on Local Government Reform in Australia <i>Graham Sansom</i>
	As co-author of the recently completed report by the Australian Centre of Excellence in Local Government on 'Options for Consolidation in Local Government', Graham Sansom is uniquely placed to provide a perspective on the pros and cons of Council amalgamations, shared services, and related topics.
12 noon	Panel Discussion <i>Mayor Lawrence Yule and Graham Sansom – facilitated by Wendy Campana</i>
	So what does all this mean for South Australia? What are the likely outcomes and implications for South Australian Councils of the topics covered by earlier speakers?



CONFERENCE PROGRAM



Solar Councils Community Program

Thinking solar?

The Local Government Association of South Australia is pleased to endorse the Solar Councils Pilot Program in association with ZEN Home Energy Systems and over 20 South Australian local Councils.

Benefits of the Solar Councils Pilot Program include:

- Community pricing (up to \$4,500 off plus up to \$10,000 in Government rebates)
- Lower power bills
- Free home inspection
- Solar Home Energy and Solar Hot Water Systems
- Quality and safety guaranteed by ZEN
- Ability to pay off your mortgage earlier
- Reduce your carbon footprint
- Security of using a trusted supplier
- New jobs and training for local trades.

Visit solarcouncils.com.au, contact ZEN on **1300 936 466**, or drop into one of our retail stores at Norwood, Gepps X Centre or Westfield Marion.

ZEN
HOME ENERGY SYSTEMS



Participating Councils include:

- Holdfast Bay City Council
- City of Marion
- City of Mitcham
- City of Onkaparinga
- City of Playford
- City of Port Lincoln
- City of West Torrens
- District Council of Cleve
- District Council of Franklin Harbour
- District Council of Kimba
- District Council of Lower Eyre Peninsula
- District Council of Mt Remarkable
- District Council of Peterborough
- District Council of Tumby Bay
- Flinders Ranges Council
- Port Augusta City Council
- Port Pirie Regional Council
- Tatiara District Council
- City of Victor Harbor
- Coorong District Council
- Kangaroo Island Council
- Regional Council of Goyder

CONFERENCE PROGRAM

DAY 1 CONTINUED

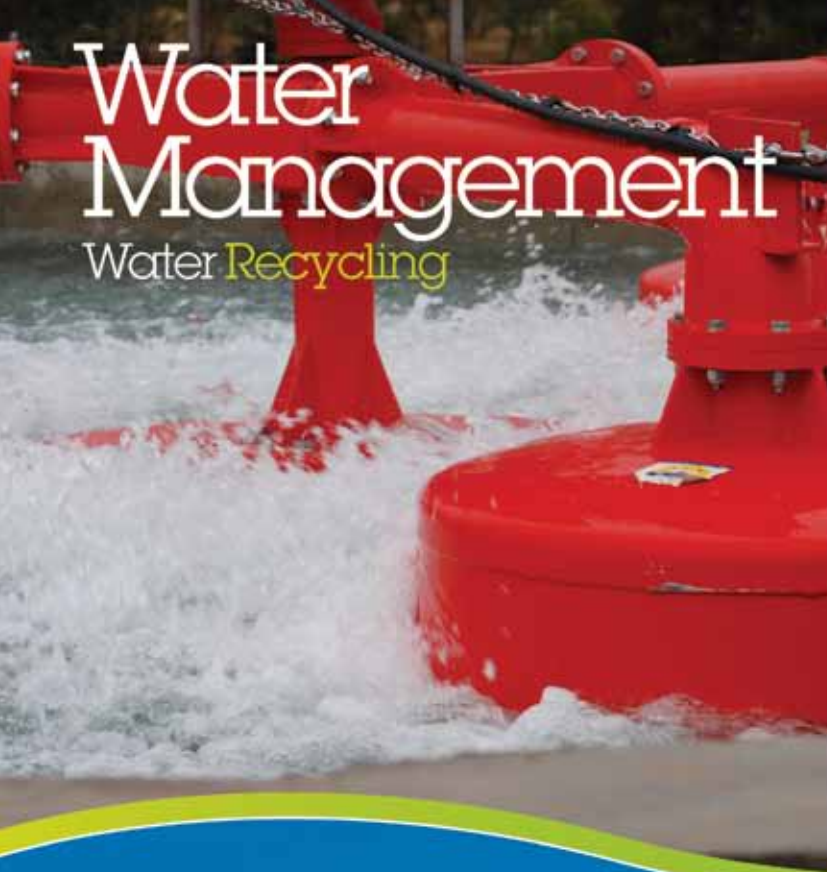
Thursday 28 April 2011

12.30pm	Conference Lunch - Launch of 'Environmental Calculator' - Presentation of Public & Environmental Health Council Awards
2.00pm	South Australia's Demographic Landscape and the Challenges for Local Government <i>Graeme Hugo</i> In this session we move from the international, national and state trends we explored earlier, to an examination of what the future holds for South Australian regions and Councils in regards to growth and demographic trends.
2.45pm	Collaborative Consumption: Building Strong, Sustainable Communities <i>Rachel Botsman</i> This session will explore how social technologies are providing new opportunities for governments to interact with communities. It will illustrate how empowered citizens can help solve problems within local communities and will highlight the role of Councils in supporting them.
3.30pm	Afternoon Tea
4.00pm	The Tension Between Growth and Sustainability <i>Jon Dee</i> In this session we will consider the balancing act between growth and economic and environmental sustainability, including opportunities and ideas for Councils to promote sustainable development and practices in their communities.
4.45pm	Close



Water Management

Water Recycling



WE CAN
RUN WE HAVE

Core Business: Water and Wastewater

Principal Products & Services: Design, Engineering, Construction, Operation and Maintenance, Including; onsite and portable treatment systems; Supply and service equipment to the water industry including pumps, aerators, chemical dosing equipment.

Address: 4B Fisher Street, Port Adelaide SA 5015
Phone: +61 8 8240 2733 Fax: +61 8 8447 8122
Email: admin@alanowater.com www.alanowater.com

ALANO
WATER

Become a WaterWise Council and keep feeling good about water.



Everyone has a part to play in helping to save water by using it wisely.

One way your local community members can feel good about water is by joining WaterWise Communities – a partnership initiative of the State Government and the Local Government Association.

Households, businesses and community groups within participating council areas are able to register to join WaterWise Communities and collect a free WaterWise kit.

The kit will help them to conserve South Australia's most precious resource to ensure we all have Water for Good.

Most of South Australia's local councils have already joined the WaterWise Communities initiative.

Join WaterWise Communities today

To join as a participating council contact the Local Government Association on 8224 2000.

To find out more about WaterWise Communities visit waterforgood.sa.gov.au

**WATER
FOR
GOOD**



Local Government Association
of South Australia



Government
of South Australia
Department for Water

Thursday 28 April 2011

6.30pm

Pre-dinner Drinks

7.00pm

LGA Conference Dinner

The Conference Dinner is always a highlight and provides an excellent opportunity for networking, a chance to relax and to digest the information provided during the day.

Enjoy a three-course meal together with some great South Australian wines and entertainment by 'perceptionist', Tom Berger.

The John Legoe Award



The John Legoe Award will be presented by Mrs Gayle Legoe at the Conference Dinner. The Award recognises the commitment to personal development, community service, involvement in promoting Local Government and communities, by current serving Council Members. A former LGA President, Cr John Legoe passed away in December 2005. He was a strong supporter of, and gave encouragement to, people (particularly younger people) nominating and participating in Local Government. He was an advocate for improved education, training and development of Council Members as community leaders and representatives. This Award was established by the LGA in honour of his own exemplary performance as a community leader over many years. The Award is presented annually.

Recognition of Long-Standing Council Members

Local Government Certificates of Service will this year be presented to currently serving Council Members who have served their communities and Local Government for more than 20 years.

Recognition of Assistance to Queensland Disaster Relief Program

LGA Certificates will be presented to staff from a number of South Australian Councils, in recognition of their recent support of disaster relief efforts in Queensland.

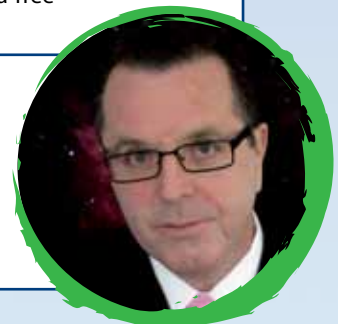
We gratefully acknowledge the generous support of the Adelaide City Council, Barossa Council, District Council of Grant, City of Marion, Naracoorte Lucindale Council, City of Onkaparinga and City of Tea Tree Gully, in making members of their staff available for this important relief work.

Entertainment

Mind Games – What is Real and What is Unreal

Tom Berger, Perceptionist

This session promises to provide a fascinating and entertaining insight into human behaviour. Tom will make extensive use of audience participation as he challenges our pre-conceptions about what is possible.



Environment Protection Authority and local government...

working together to protect the environment.



The EPA supports local government with:

- support and advice for authorised officers
- authorised officer training
- guidelines, Codes of Practice and fact sheets
- an illegal dumping protocol
- development assessment advice
- an auditor register



insyncsurveys

Want a more productive workforce?

Well, it's achievable and affordable

Insync Surveys conduct employee and customer benchmark surveys that measure:

- alignment and engagement
- satisfaction
- retention and attrition
- risk culture
- and also audit and board effectiveness

All of our surveys are backed by consulting. We give you actionable information and put it in the hands of the people who are able to drive change.

Insync Surveys has a devoted local government team that has a wealth of experience and insight into the council sector. We are committed to South Australia, our Adelaide based team understand your local needs and your local budget.

We currently work with 65 local government Councils all over Australia including the City of Tea Tree Gully and The Barossa Councils in South Australia.

Please drop by our stand and say hello, Jenny and June would love to have a chat with you.

www.insyncsurveys.com.au

CONFERENCE PROGRAM

DAY 2

Friday 29 April 2011

8.15am	Registration & Arrival Tea/Coffee
9.00am	LGA President Welcome <i>Mayor Felicity-ann Lewis</i>
9.05am	Keeping the Lights On - the Irrefutable Case for Nuclear Energy <i>Ben Heard</i> Ben is a staunch environmentalist who has come to the inescapable conclusion that nuclear energy offers the best hope for the planet's future energy needs. This session will provide a controversial insight into the case for and against nuclear energy, as well as some other challenges about future growth for Councils to consider.
10.00am	LGA General Meeting
10.30am	Morning Tea
10.45am	LGA General Meeting Continues Declaration of Presidential and State Executive Committee Election Results at the conclusion of the General Meeting.
1.00pm	Closing Lunch Sponsor Business Card Draws
2.30pm	Close

Platinum Sponsors



Dinner Sponsor



Gold Sponsors



Satchel and Lanyard Sponsor



CONFERENCE PROGRAM

Grow Your Super. Grow Local.



Vineyard in One Tree Hill, South Australia

LOCAL
SUPER

PLAYQUIP



At Playquip we are constantly updating our product range to give you a larger choice in your playground designs. Our new range of innovative and interactive equipment will excite children of all ages! More choices for you means more exciting, stimulating and fun playgrounds for kids!



For more fun, request a funalogue, or visit our website
www.playquip.com.au
info@playquip.com.au
 Or call (08) 8374 2122

PLAYQUIP



Outdoor play and shade equipment for installation now. Enhance your parks with colour, shade and durability



PLAYGROUNDS
RUBBER
SHADE
ONE STOP SHOP



SHADEQUIP



Play and Shade Systems



Aktiv Rubber
Resilient Rubber Surfacing



Playquip
 Playquip Australia
 Shadequip Australia
 Aktiv Rubber
 Phone 08 8374 2122
 Fax 08 8374 3432
info@playquip.com.au

For orders or more information telephone 08 8374 2122 or visit www.playquip.com.au



Graeme Goodings is a well known news presenter for SAS 7 in Adelaide. Graeme has had a long and successful career in the media in three states. His knowledge of local and national issues and his relaxed and friendly style make him the right choice as MC for this conference.



Dr Keith Suter is a foremost speaker on global issues, as well as a highly regarded economic and social commentator, strategic planner, conference speaker, futurist, author and broadcaster. Keith is also Channel 7's "Sunrise" program foreign affairs editor.



Mayor Lawrence Yule has been Mayor of Hastings District in New Zealand since 2001 and is currently the President of Local Government New Zealand. Lawrence has first hand experience of Local Government reform and related issues "across the ditch".



Graham Sansom is a Professor at the University of Technology Sydney, and Director of the UTS Centre for Local Government and the Australian Centre of Excellence for Local Government. Graham was formerly CEO of the Australian Local Government Association.



Graeme Hugo has research interests in population issues in Australia and South East Asia, especially migration. He is the author of over three hundred books, articles in scholarly journals and chapters in books, as well as a large number of conference papers and reports.



Rachel Botsman writes, consults, and speaks on the power of collaboration and sharing through networks, and on topics related to technology and innovation. She is an inspiring speaker and has presented at a number of international and high profile events.



Jon Dee is the founder of Planet Ark. Jon is currently Director of the Australian sustainability organisation "Do Something". He has directed and produced over 350 environmentally focussed TV and radio adverts, and has worked as a presenter on Foxtel and Channel 9.



Tom Berger has studied human behaviour for over 15 years and can determine what people are thinking purely by watching and interacting with them. Tom challenges his audiences to question what is real and what is possible using extensive audience participation.



Ben Heard is the founding Director of ThinkClimate Consulting, and a leading practitioner in climate change and environmental decision making. Despite his environmental background, Ben regards nuclear power as a central platform to effective climate change response.

'We convert industrial and domestic waste into high quality recycled plastic products'



- Diverts waste from landfill
- Low maintenance and long lasting
- High resistance to vandalism
- Termite resistant
- Colour is built into the product
- No painting required
- Will not split, crack or rot unlike timber
- Provides protection from graffiti



www.replas.com.au



RESOURCECO

TOMORROW'S SOLUTIONS. TODAY

We're Sustainable Are You?

Waste is an absolute resource at ResourceCo. As raw material is becoming scarcer we all have our responsibility to make sure everything is re-used.

There is still a lot of work to do.

A lot of waste material is not being fully re-used and is ending up in inappropriate places such as landfills. Local Governments, as leaders of their communities, need to encourage the re-use of materials on their projects now, for the future.

ResourceCo provides a whole of life approach to close the loop on materials supply. We can receive construction and demolition waste and provide quality sustainable products enabling Council to build 'greener' infrastructure and meet their environmental targets.

We stand behind our products and undertake rigorous testing to ensure compliance with both quality and environmental specification limits.

Contact us to appreciate the environmental benefits of using ResourceCo in your next project.

LGA CONFERENCE INITIATIVES

INITIATIVES

The LGA is proud to advise that:

- The Conference brochure and program are printed on mega recycled silk. This contains FSC (Forest Stewardship Council) certified mixed sources; 50% recycled post consumer waste, and 50% FSC certified fibre.
- All brochures and programs are printed with environmentally friendly Hy-Unity Soy New ink.
- The Conference lanyards are made from recycled Polyethylene Terephthalate (PET).
- The gift baskets presented to speakers are all from a local South Australian business and contain only produce sourced from South Australia.
- We choose only South Australian wines to serve at the Conference lunches and dinner.

Ecologically Sustainable Building Initiatives

The LGA strives to adopt an environmentally responsible approach in all its activities and is pleased to advise that Local Government House at 148 Frome Street, Adelaide is energy efficient, with a four and a half star NABERS rating.

The building incorporates the following Ecologically Sustainable Development (ESD) Initiatives:

- Electronic building management system controls air conditioning and other mechanical services for efficiency and to minimise environmental impact.
- Solar boosted gas hot water systems.
- Double glazing and energy efficient lighting.
- Latest technology VVVF lifts, which are computer controlled to minimise energy use and waiting times.
- Reflective foil laminate backed insulation designed to substantially reduce heat transmission during summer months and heat loss during winter months.





growing the future...

Look out for the Rural Solutions SA booth at the Local Government Showcase for more information

> VEGETATION PLANNING

street tree and roadside assessments, sustainable garden designs, revegetation and landscape restoration programs, biodiversity and ecological value mapping, erosion control strategies, coastal management, weed mapping and control



Our team of specialist consultants develop practical and innovative solutions to help plan for the future. By assessing the vulnerability of the environment and community to future changes, our consultants can assist in devising strategies which enable local government, communities and businesses to respond, adapt and effectively plan for the future.

> FIRE PLANNING

fuel load assessments, fire preparedness training and workshops, prescribed burning strategies, fire scar mapping, fire management planning



> WATER PLANNING

water capture and reuse design, irrigation efficiency auditing, water quality monitoring, water sensitive landscape design, dryland salinity and soil acidification management



Environmental Solutions

Positive environmental impact

info@ruralsolutions.sa.gov.au

1300 364 322

www.ruralsolutions.sa.gov.au



Rural Solutions SA
GPO Box 1671
Adelaide SA 5001

Government of South Australia



STERILINERACING

Our unique brand of PVCu Performance Fencing delivers in ever respect. It is the natural choice for parks, playgrounds, sporting grounds and car parks.

We provide a range of fencing designs and styles, with the ability to custom design products to suit your requirements.

Consider the benefits of Duraline Fencing for your next project

- Lower Maintenance Costs
- Increased Public Safety
- Community Visual Enhancement
- Local Service & Support



38 Oborn Road, Mount Barker South Australia, 5251 Australia
t + 61 8 8398 3133 f + 61 8 8398 3131
e sales@sterilineracing.com

www.sterilineracing.com

DURALINE

PERFORMANCE FENCING

boundaries without limits

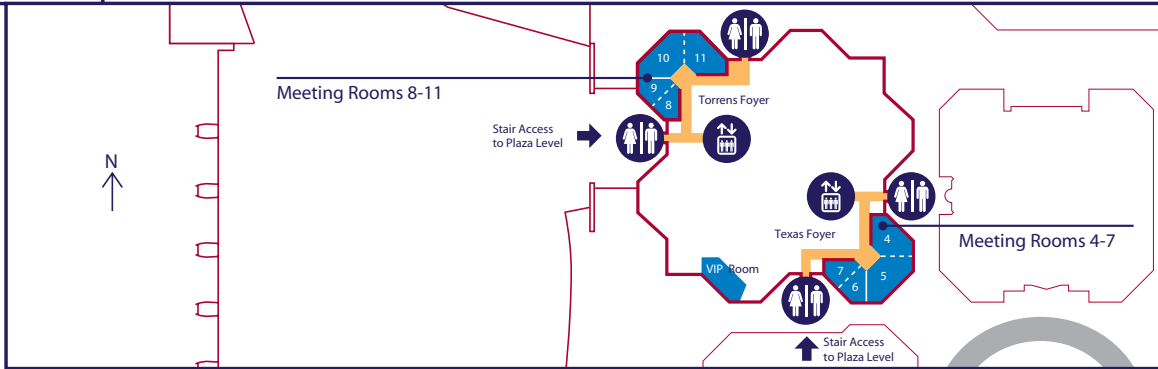
- Circulation areas
- Function areas
- Regattas Bistro and Internet Café

North Terrace, Adelaide, South Australia 5000
 Telephone (61 8) 8212 4099 Facsimile (61 8) 8212 5101
 sales@adelaidecc.com.au
 www.adelaidecc.com.au

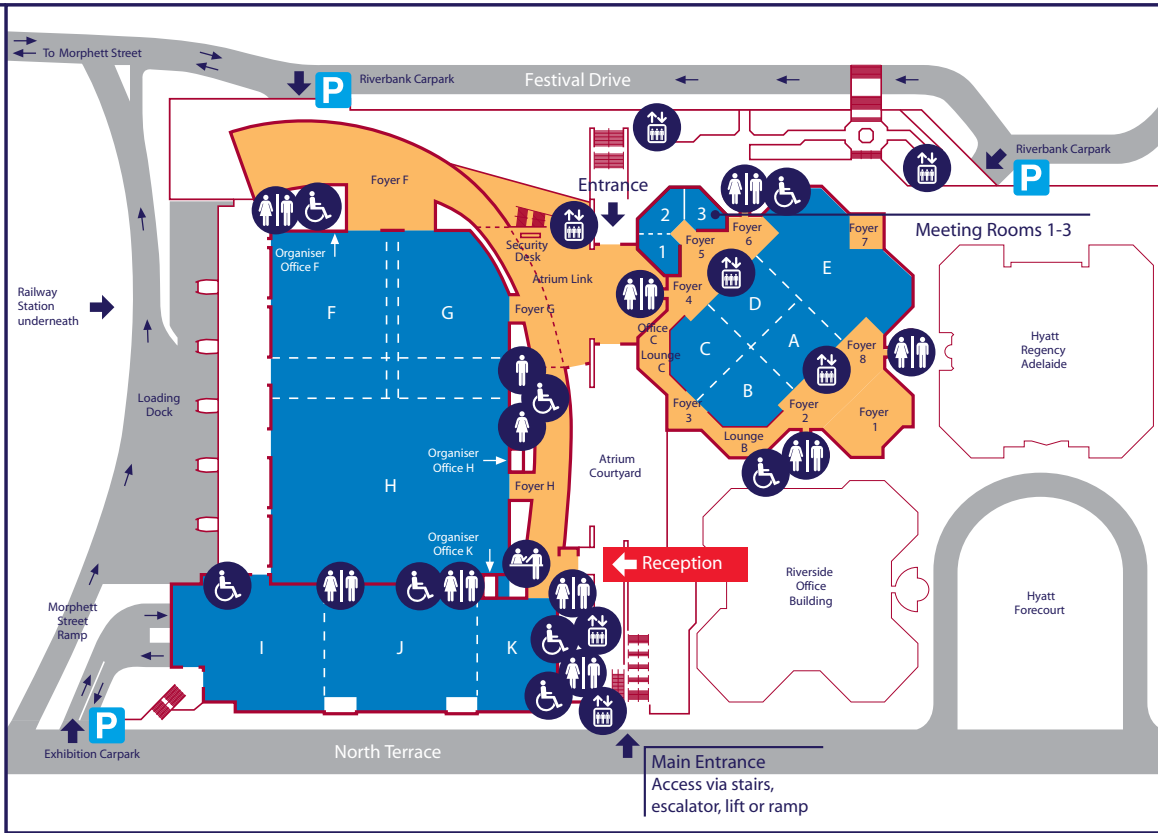


ADELAIDE CONVENTION CENTRE

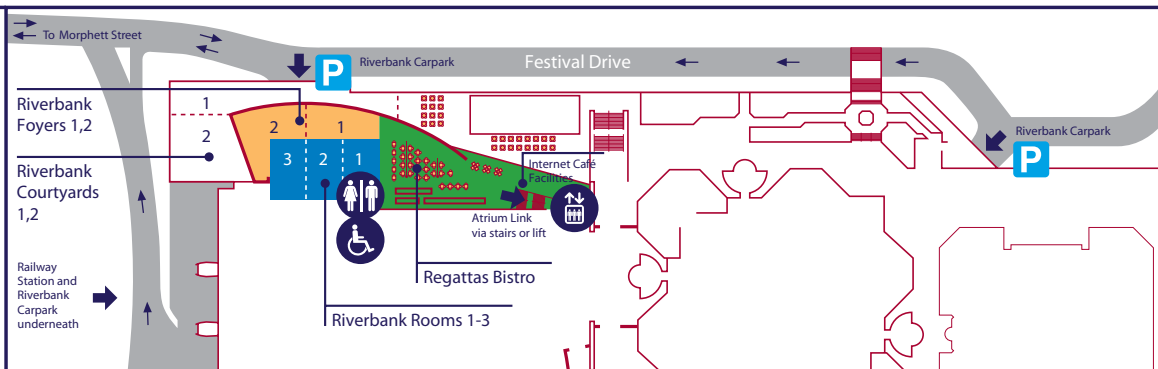
Level One



Plaza Level



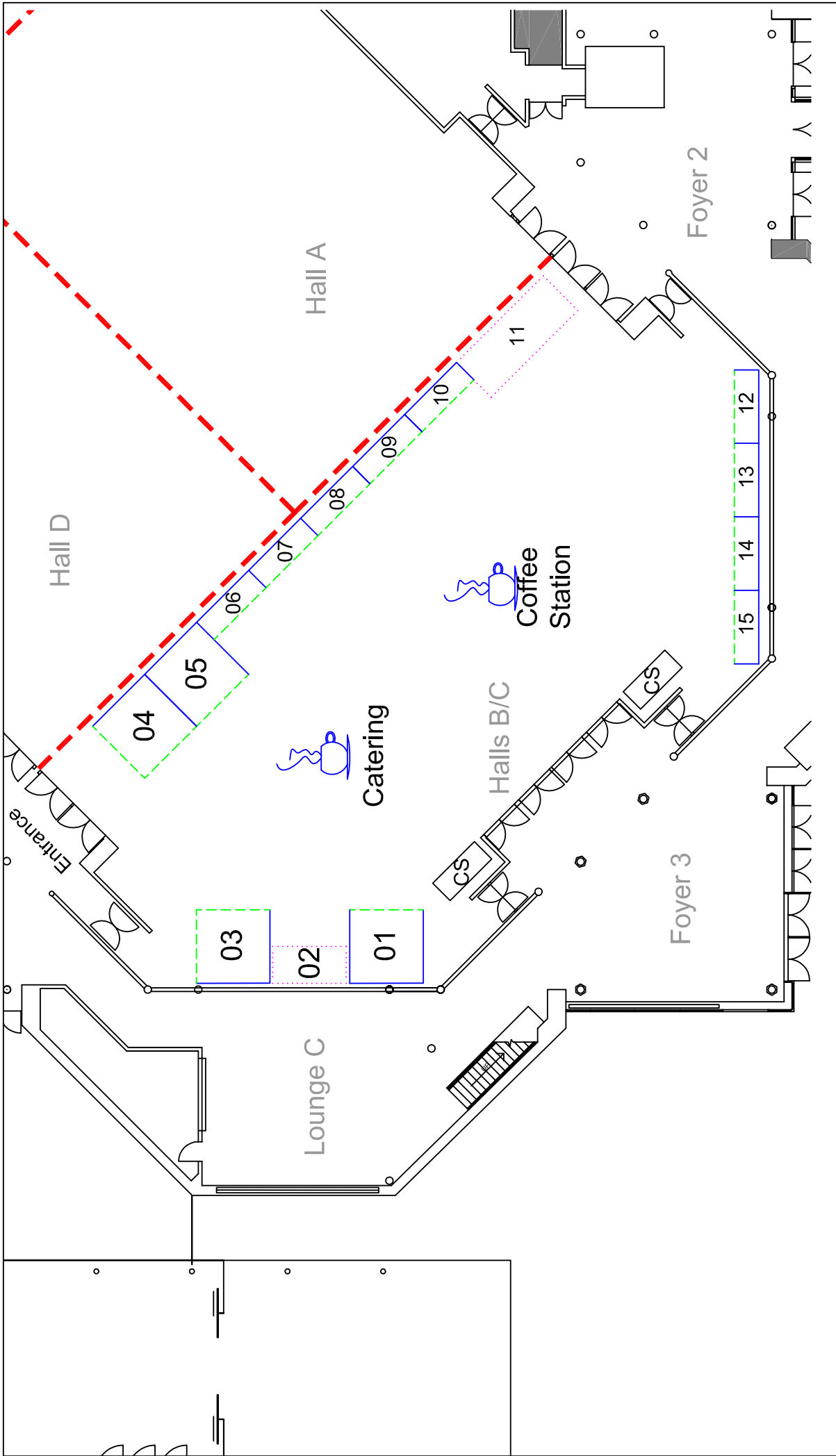
Riverbank Level



CONVENTION CENTRE MAP

EXHIBITION BOOTHS

Booth	Organisation	
1	 Local Government Association of South Australia	Local Government Association of South Australia
2	 SHAPE YOUR WORLD	Shape Your World
3	 sema™	SEMA Group
4	 ZEN HOME ENERGY SYSTEMS	ZEN Home Energy Systems
5	 Norman Waterhouse LAWYERS	Norman Waterhouse Lawyers
6	 PLAYQUIP	Playquip Pty Ltd
7	 Government of South Australia Department for Water	Department for Water
8	  STERILINE RACING™	Steriline Racing
9	 EPA South Australia	Environment Protection Authority
10	 LOCAL SUPER	Local Super
11	 REPLAS RECYCLED PLASTIC PRODUCTS	Replas SA
12	 ALANO WATER	Alano Water
13	 RESOURCECO TOMORROW'S SOLUTIONS. TODAY	ResourceCo Pty Ltd
14	 insync surveys	Insync Surveys
15	 RURAL SOLUTIONS SA	Rural Solutions SA



EXPO FLOOR PLAN

**We're growing our future,
so you can grow yours.**

McArthur has been providing local government with informed recruitment solutions for over 35 years, and while we're proud of the past, we're committed to the future.

That's why we continually invest in the development and growth of our people – young, focused and ambitious professionals, just like Jill.

To us, it means we are always bringing through the calibre of consultant that will help further strengthen our market leading position for the next 35 years – and beyond.

More importantly, for local government it means the confidence and peace of mind knowing that we will continue to deliver the Best People Fit solutions you have come to expect from McArthur.

To find out what our future can do for yours, call us on (08) 8100 7000.



Access to the LGA is just a 'click' away

Visit the LGA online at www.lga.sa.gov.au

LGA.net provides Council Members and Council staff with easy 'push of a button' access to key LGA information.

- Are your staff following legal procedures for enforcement?
- Is your Council a participant in the Managing the Future - Performance Improvement Program?
- Where can you find information to present to the local school?
- Is your Council interested in the Shape Your World – 1st Steps Program?
- Is your Council financially sustainable?
- Have you participated in our online training modules?
- Is your Council using quality video footage available to it?

LGA.net provides information on all of the above questions from model operating procedures for enforcement, to an online database of "Out of the Ordinary" television stories about community successes – and fact sheets for students. It's the biggest database of information to help Council Members and staff and it's updated daily.



See us
at stand
3

Connect with your region
Interact with your customers
Improve your engagement process

We help our clients manage the complexity of customer interactions by using information and technology to connect, interact and improve their engagements with their customers.

We have 30 years of experience in providing innovative solutions that can help local government, including physical-to-digital document transition, our on-line document archival and retrieval system SecurDOCS®, high-volume printing, print stock management, plus email and web-based communications.

Connect, Interact and Improve.
It's Your Informational Advantage.®

Visit www.semagroup.com.au or call 1800-009-544.

SCAN
WITH
YOUR
MOBILE:





**Local Government Association
of South Australia**

148 Frome Street Adelaide SA 5000

GPO Box 2693 Adelaide SA 5001

Tel 08 8224 2000 **Fax** 08 8232 6336

Email lgasa@lga.sa.gov.au **Web** www.lga.sa.gov.au

