

Guadalupe River Basin (18), San Antonio River Basin (19), San Antonio–Nueces Coastal Basin (20), and Portion of Bays and Estuaries (24)

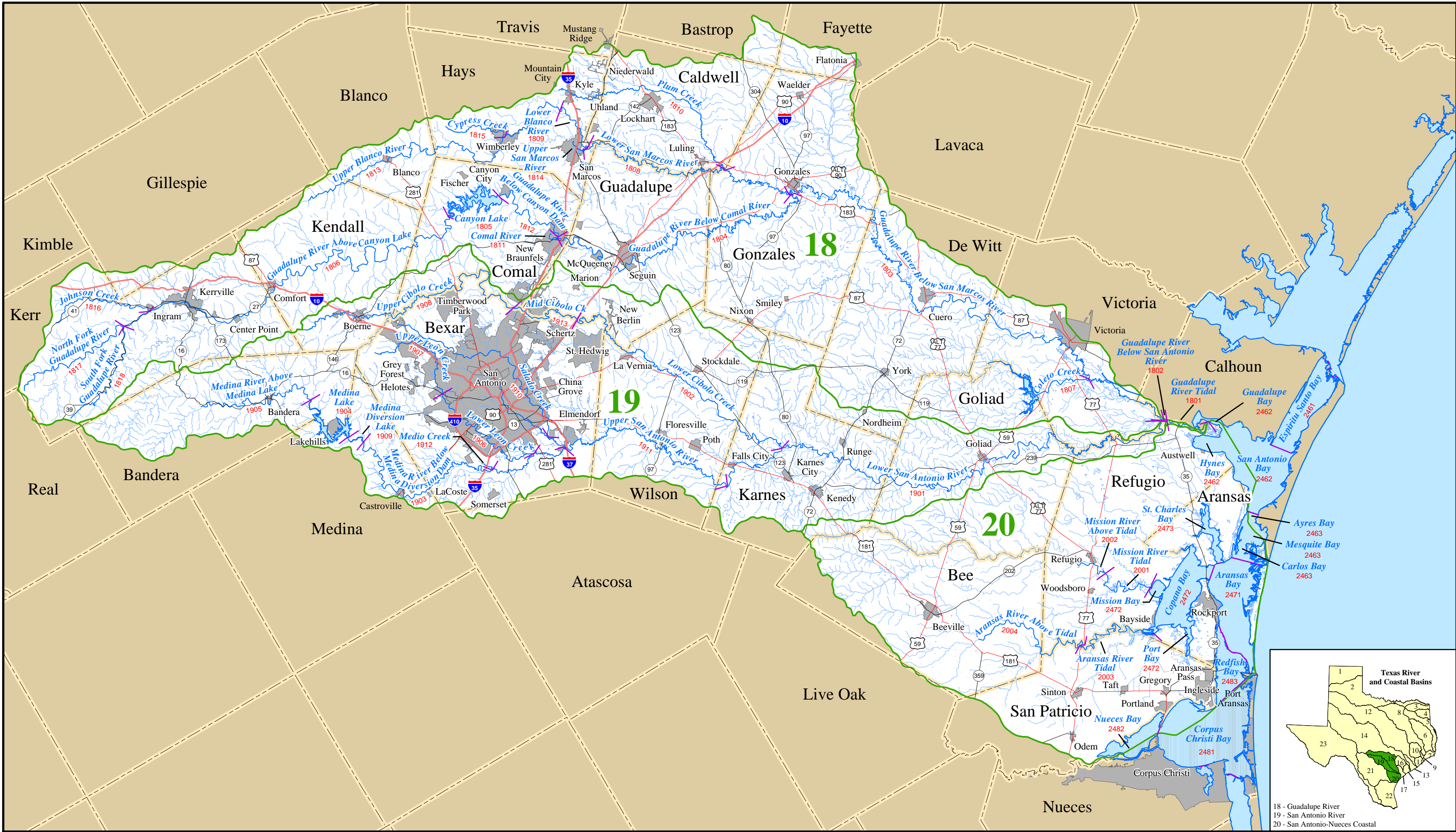
GUADALUPE RIVER BASIN (18) The headwaters of the Guadalupe River form in southwestern Kerr County. The river flows southeasterly to Guadalupe Bay, part of the San Antonio Bay System. The Comal and San Marcos rivers are the Guadalupe’s major tributaries. The total basin drainage area is 6,070 square miles.	
1801	<u>Guadalupe River Tidal</u> - from the confluence with Guadalupe Bay in Calhoun/Refugio County to the Guadalupe-Blanco River Authority Salt Water Barrier 0.7 kilometer (0.4 mile) downstream of the confluence of the San Antonio River in Calhoun/Refugio County
1802	<u>Guadalupe River Below San Antonio River</u> - from the Guadalupe-Blanco River Authority Salt Water Barrier 0.7 kilometer (0.4 mile) downstream of the confluence of the San Antonio River in Calhoun/Refugio County to a point immediately upstream of the confluence of the San Antonio River in Calhoun/Refugio/Victoria County
1803	<u>Guadalupe River Below San Marcos River</u> - from a point immediately upstream of the confluence of the San Antonio River in Calhoun/Refugio/Victoria County to a point immediately upstream of the confluence of the San Marcos River in Gonzales County
1804	<u>Guadalupe River Below Comal River</u> - from a point immediately upstream of the confluence of the San Marcos River in Gonzales County to a point immediately upstream of the confluence of the Comal River in Comal County
1805	<u>Canyon Lake</u> - from Canyon Dam in Comal County to a point 2.7 kilometers (1.7 miles) downstream of Rebecca Creek Road in Comal County, up to the normal pool elevation of 909 feet (impounds Guadalupe River)
1806	<u>Guadalupe River Above Canyon Lake</u> - from a point 2.7 kilometers (1.7 miles) downstream of Rebecca Creek Road in Comal County to the confluence of the North Fork Guadalupe River and the South Fork Guadalupe River in Kerr County
1807	<u>Coleta Creek</u> - from the confluence with the Guadalupe River in Victoria County to the confluence of Fifteenmile Creek and Twelvemile Creek in Goliad/Victoria County, including Coleta Creek Reservoir

1808	<u>Lower San Marcos River</u> - from the confluence with the Guadalupe River in Gonzales County to a point 1.0 kilometer (0.6 mile) upstream of the confluence of the Blanco River in Hays County
1809	<u>Lower Blanco River</u> - from the confluence with the San Marcos River in Hays County to a point 0.3 kilometer (0.2 mile) upstream of Limekiln Road in Hays County
1810	<u>Plum Creek</u> - from the confluence with the San Marcos River in Caldwell County to FM 2770 in Hays County
1811	<u>Comal River</u> - from the confluence with the Guadalupe River in Comal County to Klingemann Street at New Braunfels in Comal County
1812	<u>Guadalupe River Below Canyon Dam</u> - from a point immediately upstream of the confluence of the Comal River in Comal County to Canyon Dam in Comal County
1813	<u>Upper Blanco River</u> - from a point 0.3 kilometer (0.2 mile) upstream of Limekiln Road in Hays County to the confluence of Meier Creek in Kendall County
1814	<u>Upper San Marcos River</u> - from a point 1.0 kilometer (0.6 mile) upstream of the confluence of the Blanco River in Hays County to a point 0.7 kilometer (0.4 mile) upstream of Loop 82 in San Marcos in Hays County (includes Spring Lake)
1815	<u>Cypress Creek</u> - from the confluence with the Blanco River in Hays County to a point 6.4 kilometers (4.0 miles) upstream of the most upstream unnamed county road crossing in Hays County
1816	<u>Johnson Creek</u> - from the confluence with the Guadalupe River in Kerr County to a point 1.2 kilometers (0.7 mile) upstream of the most upstream crossing of SH 41 in Kerr County
1817	<u>North Fork Guadalupe River</u> - from the confluence with the Guadalupe River in Kerr County to a point 18.2 kilometers (11.3 miles) upstream of Boneyard Draw in Kerr County
1818	<u>South Fork Guadalupe River</u> - from the confluence with the Guadalupe River in Kerr County to a point 4.8 kilometers (3.0 miles) upstream of FM 187 in Kerr County

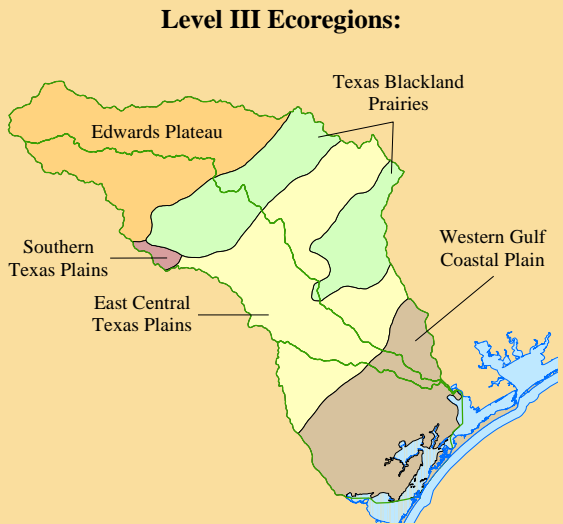
SAN ANTONIO RIVER BASIN (19) The San Antonio River originates in Brackenridge Park in San Antonio and flows southeastward to its confluence with the Guadalupe River near the Gulf Coast. San Antonio is the largest metropolitan area in the basin. The total basin drainage area is 4,180 square miles. Principal tributaries to the San Antonio River include the Medina River, Leon Creek, Cibolo Creek, and Salado Creek.	
1901	<u>Lower San Antonio River</u> - from the confluence with the Guadalupe River in Refugio/Victoria County to a point 600 meters (660 yards) downstream of FM 791 at Mays Crossing near Falls City in Karnes County
1902	<u>Lower Cibolo Creek</u> - from the confluence with the San Antonio River in Karnes County to a point 100 meters (110 yards) downstream of IH 10 in Bexar/Guadalupe County
1903	<u>Medina River Below Medina Diversion Lake</u> - from the confluence with the San Antonio River in Bexar County to Medina Diversion Dam in Medina County
1904	<u>Medina Lake</u> - from Medina Lake Dam in Medina County to a point immediately upstream of the confluence of Red Bluff Creek in Bandera County, up to the normal pool elevation of 1064.2 feet (impounds Medina River)
1905	<u>Medina River Above Medina Lake</u> - from a point immediately upstream of the confluence of Red Bluff Creek in Bandera County to the confluence of the North Prong Medina River and the West Prong Medina River in Bandera County
1906	<u>Lower Leon Creek</u> - from the confluence with the Medina River in Bexar County to a point 100 meters (110 yards) upstream of SH 16 northwest of San Antonio in Bexar County
1907	<u>Upper Leon Creek</u> - from a point 100 meters (110 yards) upstream of SH 16 northwest of San Antonio in Bexar County to a point 9.0 kilometers (5.6 miles) upstream of Scenic Loop Road north of Helotes in Bexar County
1908	<u>Upper Cibolo Creek</u> - from the Missouri-Pacific Railroad bridge west of Bracken in Comal County to a point 1.5 kilometers (0.9 mile) upstream of the confluence of Champée Springs in Kendall County

1909	<u>Medina Diversion Lake</u> - from Medina Diversion Dam in Medina County to Medina Lake Dam in Medina County, up to the normal pool elevation of 926.5 feet (impounds Medina River)
1910	<u>Salado Creek</u> - from the confluence with the San Antonio River in Bexar County to Rocking Horse Lane west of Camp Bullis in Bexar County
1911	<u>Upper San Antonio River</u> - from a point 600 meters (660 yards) downstream of FM 791 at Mays Crossing near Falls City in Karnes County to a point 100 meters (110 yards) upstream of Hildebrand Avenue at San Antonio in Bexar County
1912	<u>Medio Creek</u> - from the confluence with the Medina River in Bexar County to a point 1.0 kilometer (0.6 mile) upstream of IH 35 at San Antonio in Bexar County
1913	<u>Mid Cibolo Creek</u> - from a point 100 meters (110 yards) downstream of IH 10 in Bexar/Guadalupe County to the Missouri-Pacific Railroad bridge west of Bracken in Comal County
SAN ANTONIO–NUECES COASTAL BASIN (20) The San Antonio–Nueces Coastal basin lies in the coastal plain between the San Antonio and Nueces Rivers. There are two minor rivers, the Mission River and the Aransas River, but no watercourses that maintain significant stream flow. Runoff from the basin drains into Copano Bay and Aransas Bay. Total basin drainage area is 2,652 square miles.	
2001	<u>Mission River Tidal</u> - from the confluence with Mission Bay in Refugio County to a point 7.4 kilometers (4.6 miles) downstream of US 77 in Refugio County
2002	<u>Mission River Above Tidal</u> - from a point 7.4 kilometers (4.6 miles) downstream of US 77 in Refugio County to the confluence of Blanco Creek and Medio Creek in Refugio County
2003	<u>Aransas River Tidal</u> - from the confluence with Copano Bay in Aransas/Refugio County to a point 1.6 kilometers (1.0 mile) upstream of US 77 in Refugio/San Patricio County

2004	<u>Aransas River Above Tidal</u> - from a point 1.6 kilometers (1.0 mile) upstream of US 77 in Refugio/San Patricio County to the confluence of Poesta Creek and Aransas Creek in Bee County
BAYS AND ESTUARIES (24) Segments that contain multiple bays are shown with separate labels for each bay. Only the bays and estuaries associated with this basin are listed here.	
2461	<u>Espiritu Santo Bay</u> *
2462	<u>San Antonio Bay/Hynes Bay/Guadalupe Bay</u> *
2463	<u>Mesquite Bay/Carlos Bay/Ayres Bay</u> *
2471	<u>Aransas Bay</u> *
2472	<u>Copano Bay/Port Bay/Mission Bay</u> *
2473	<u>St. Charles Bay</u> *
2481	<u>Corpus Christi Bay</u> *
2482	<u>Nueces Bay</u> *
2483	<u>Redfish Bay</u> *
* The segment boundaries are considered to be the mean high tide line.	



Guadalupe River, San Antonio River, and San Antonio-Nueces Coastal Basins



Legend

- Interstate Highway
- U.S. Highway
- State Highway
- Classified Segment Number
- Classified Stream Segment
- Minor Stream
- Reservoir, Bay, Estuary
- Segment Boundary
- Basin Boundary
- City Boundary
- County Boundary

Note: All features except county lines and some city boundaries are clipped to the extent of the watershed.

Source: The county boundaries and major streams were acquired from the U.S. Census Bureau and are part of the 1992 TIGER/Line dataset (1:100,000). The minor streams are based on the Environmental Protection Agency's River Reach File Version 3.0 Alpha Release (RF3-Alpha), completed in 1998 at a scale of 1:100,000. The river basins are derived from the 1974 Hydrologic Unit Map of Texas (1:500,000) and were digitized by the U.S. Geological Survey in 1990. The classified stream segment names, numbers, and boundaries are defined in Title 30, Chapter 307 of the Texas Administrative Code (TAC) and were revised by the Texas Commission on Environmental Quality in 2000. The highway data are based on enhanced U.S. Census Bureau 1990 TIGER/Line data (1:100,000) published in 1992 by Geographic Data Technology (GDT), Inc. The cities were derived from U.S. Census Bureau 1998 TIGER/Line data (1:100,000).

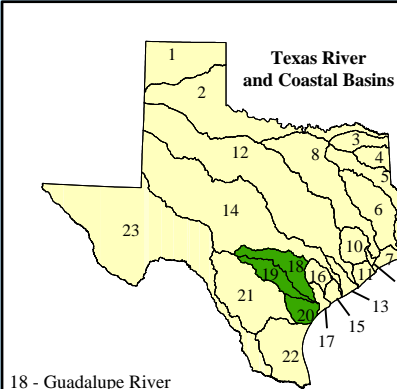
0 5 10 15 20 25 Miles

Scale 1:875,000

Projection: Texas Statewide Mapping System (TSMS)



This map was generated by the Information Resources Division of the Texas Commission on Environmental Quality. No claims are made to the accuracy or completeness of the data or to its suitability for a particular use. For more information concerning this map, contact the Information Resources Division at (512) 239-0800.



18 - Guadalupe River
19 - San Antonio River
20 - San Antonio-Nueces Coastal