

Ocean Atlantic

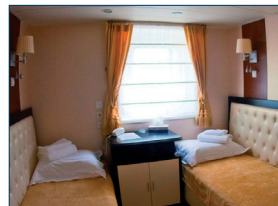
RORO / Passenger vessel (ROPAX)



Special Features

Car deck:	100 m x 9 m (L x W)
Axle load of deck/ramp:	27 tons or 3 tons/m ²
Number of 20 ft. containers:	Approx. 35
Welding on deck:	Allowed

Built:	1986
IMO:	8325432
Length overall:	139.55 mtr
Breadth:	21.00 mtr
Max draft:	5.80 mtr
GT:	12,798 mts
NT:	4,653
Max speed:	17 knots
Fuel consumption per day at service speed:	36 ton IFO + 6 ton MGO
Passenger capacity:	235
Crew capacity:	147
Number of cabins:	118 (60 for crew)
Ice class:	1B



Offshore accommodation



Sales & Marketing