

ADVANCED PRINT
DIRECT CONNECTION

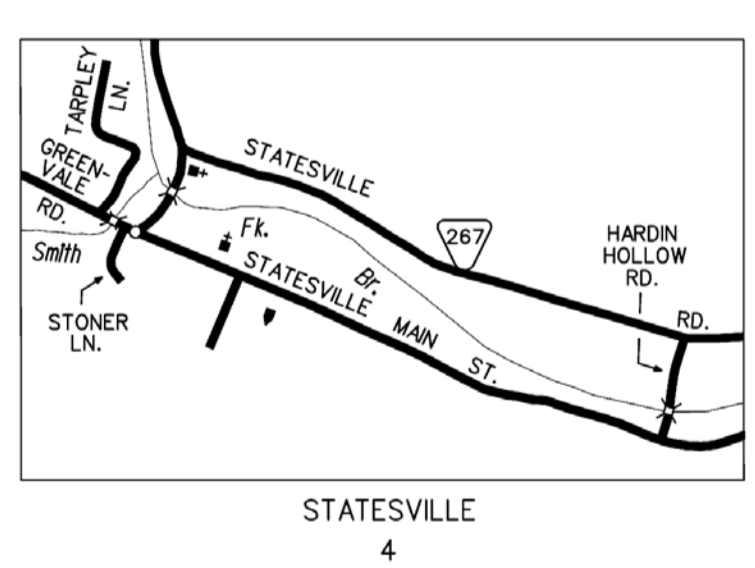
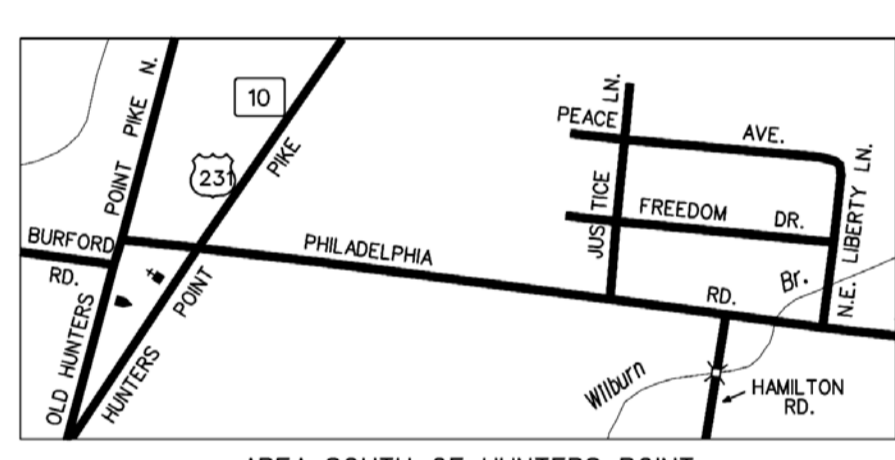
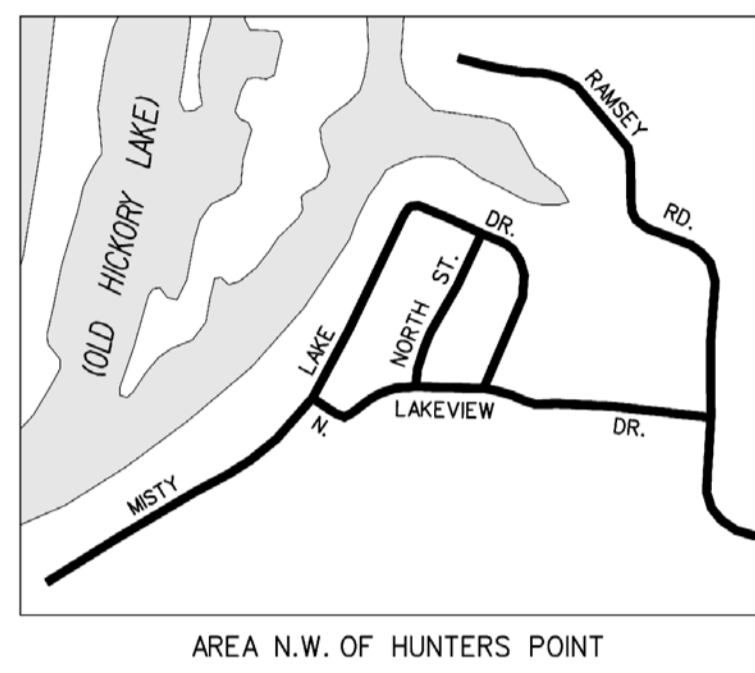
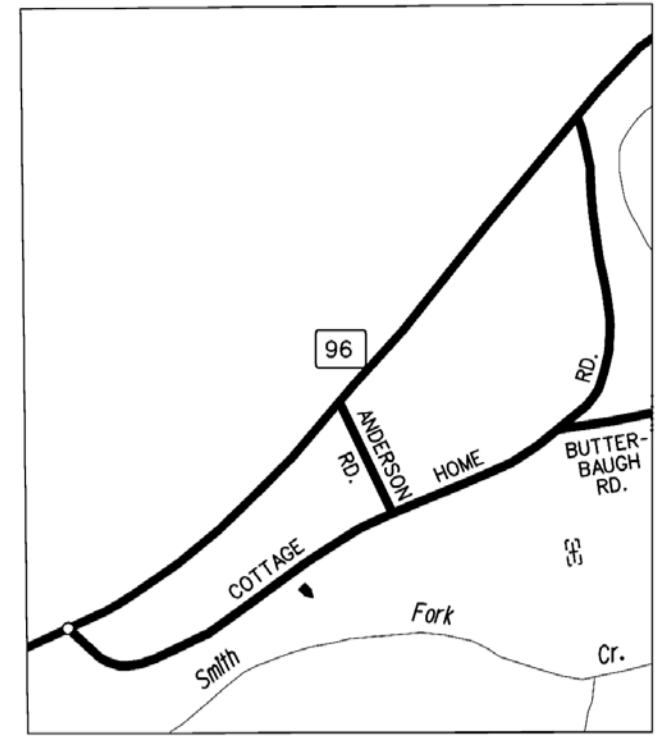
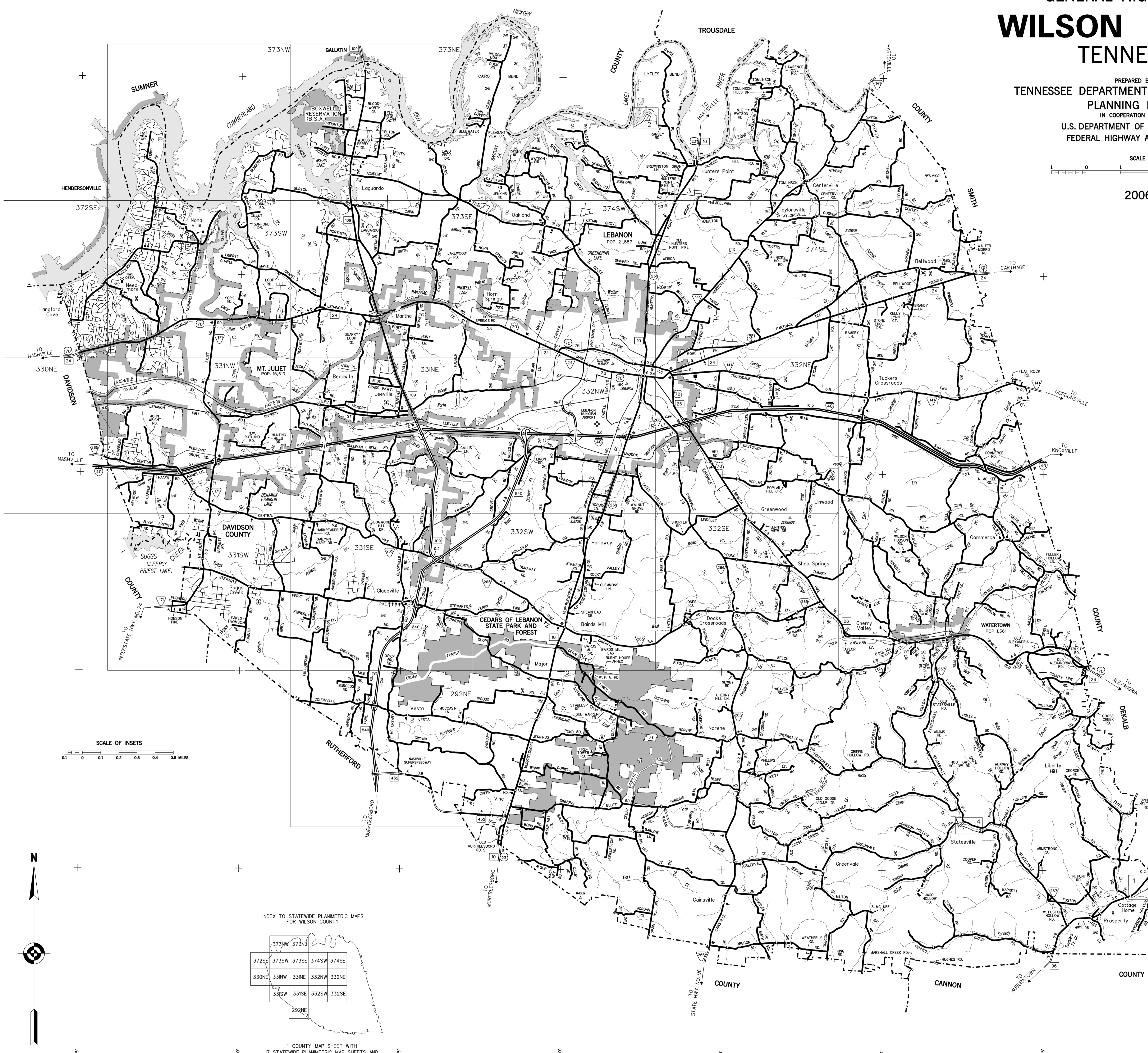
GENERAL HIGHWAY MAP WILSON COUNTY TENNESSEE

PREPARED BY THE
TENNESSEE DEPARTMENT OF TRANSPORTATION
PLANNING DIVISION
IN COOPERATION WITH THE
U.S. DEPARTMENT OF TRANSPORTATION
FEDERAL HIGHWAY ADMINISTRATION

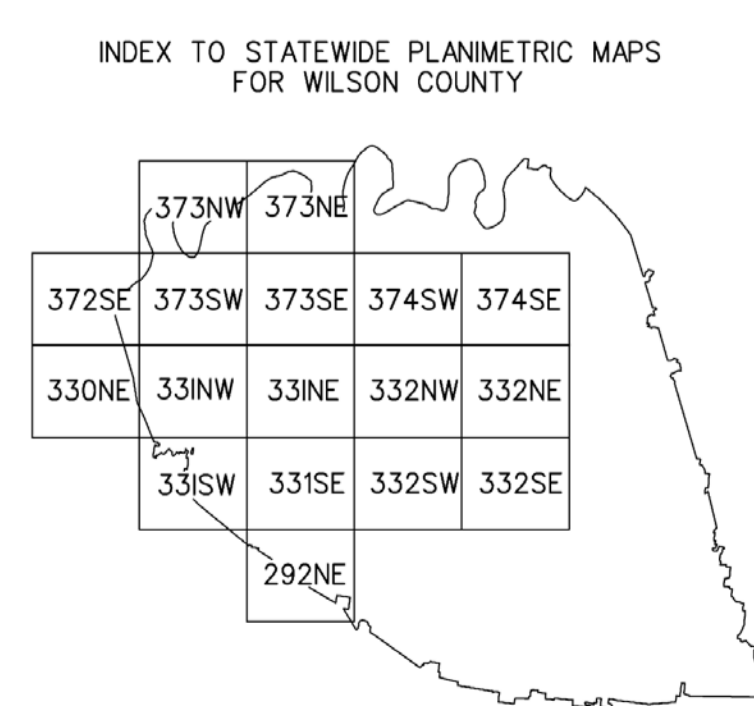
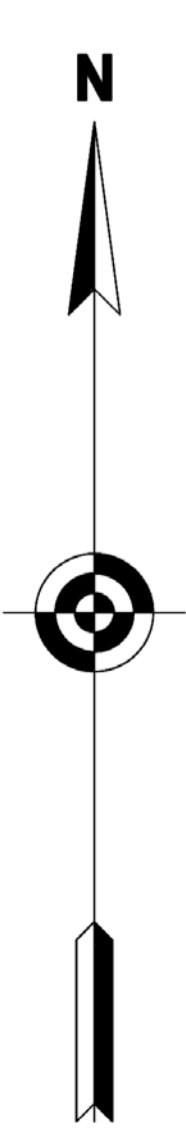
SCALE
0 1 2 3 4 MILES

2006

- LEGEND**
- SCHOOL
 - CHURCH
 - CHURCH WITH CEMETERY
 - CEMETERY
 - HOSPITAL
 - POST OFFICE
 - CITY HALL OR COMMUNITY CENTER
 - MONUMENT
 - AIRPORT - COMPLETE FACILITIES
 - AIRPORT - LIMITED FACILITIES
 - LANDING AREA OR STRIP
 - HIGHWAY GARAGE (S-STATE, C-COUNTY)
 - TRIANGULATION STATION
 - OBSERVATION OR LOOKOUT TOWER
 - COUNTY SEAT
 - OTHER CITIES AND VILLAGES
 - RADIO OR TELEVISION STATION
 - POINT OF INTEREST
 - DOT TO INDICATE LOCATION OF ANY CULTURAL FEATURE OUT OF PLACE
 - INTERSTATE HIGHWAY
 - U.S. NUMBERED HIGHWAY
 - STATE HIGHWAY
 - PROMINENT PEAK WITH ELEVATION
 - LAKE WITH DAM
 - RESERVOIR, POND OR LAKE
 - LEVEE OR DYKE
 - DRAINAGE CANAL
 - NARROW STREAM
 - WIDE STREAM
 - DAM WITH LOCK
 - HEAD OF NAVIGATION
 - NAVIGABLE STREAM
 - GRADE CROSSING
 - UNDERPASS-ROAD ABOVE
 - OVERHEAD-ROAD ABOVE
 - RAILROAD TUNNEL
 - GRADE SEPARATION
 - FORD
 - LOW WATER BRIDGE
 - FREE FERRY OR TOLL FERRY
 - HIGHWAY BRIDGE-OVER 20 FEET
 - HIGHWAY BRIDGE-LONG RIVER CROSSING
 - PRIMITIVE OR UNIMPROVED ROAD
 - GRADED AND DRAINAGE ROAD
 - SOL, GRAVEL, OR STONE SURFACED ROAD
 - PAVED HIGHWAY OR ROAD
 - DIVIDED ROADWAY
 - DISTANCE IN MILES BETWEEN DESIGNATED POINTS
 - FULL CONTROL OF ACCESS
 - NATIONAL PARK SERVICE HIGHWAY
 - HIGHWAY INTERCHANGE
 - COUNTY LINE
 - STATE LINE
 - INCORPORATED CITY BOUNDARY
 - RESERVATION BOUNDARY



SCALE OF INSETS
0.1 0.2 0.3 0.4 0.5 MILES



MAP RECORD
FIELD DATA OBTAINED IN 2005
FIELD EXAMINATION MADE IN

REVISIONS	DATE

1 COUNTY MAP SHEET WITH
17 STATEWIDE PLANIMETRIC MAP SHEETS AND
2 SUPPLEMENTAL CITY MAP SHEETS
MT. JULIET
WATERTOWN

POPULATION OF WILSON COUNTY
88,808 (2000 CENSUS)

LAMBERT CONFORMAL CONIC PROJECTION
20,000 FOOT GRID TICKS BASED ON THE
TENNESSEE COORDINATE SYSTEM
(1927 NORTH AMERICAN DATUM)

AUTHORIZATION NO. 40090069505