

# 15th FINA World Championships

## High Diving





1. Important Addresses
2. Events
3. Travel / Visa
4. Accommodation
5. Registration / Accreditation
6. Costs
7. Meetings / Rehearsals
8. Training / Competition
9. Medical Arrangements
10. Participants
11. Judges
12. Site / Facilities
13. Advertising Rules
14. Rules and Regulations



## 1. Important Addresses

### FINA Office

Avenue de l'Avant-Poste 4  
1005 Lausanne  
Switzerland

Phone: +41 21 310 47 10  
Fax : +41 21 312 66 10

#### Contact Person High Diving:

Ms. Mirjam HELLER

E-mail: [diving@fina.org](mailto:diving@fina.org)

#### Contact Person Flights:

Ms. Angela DUBUIS

E-mail: [fina.competitions@fina.org](mailto:fina.competitions@fina.org)

Website: [www.fina.org](http://www.fina.org)

### Organising Committee Barcelona

Responsible High Diving:

Mr. Christian CIRERA

E-mail: [ccirera@bcn2013.com](mailto:ccirera@bcn2013.com)

Website: [www.bcn2013.com](http://www.bcn2013.com)

### Technical High Diving Commission (THDC)

Mr. Jesus MENA (Chairman)

Ms. Jihong ZHOU (Vice Chairman)

Mr. Michael GEISSBUEHLER (Honorary Secretary)

Ms. Melanie BECK (Managing Director)

Mr. Claudio DE MIRO

Mr. Orlando DUQUE

Mr. Julian LLINAS

Mr. Fernando PLATAS

Mr. Niki STAJKOVIC

Mr. Joey ZUBER

### Athletes' Liaison

Jordi MONCUSI DOMINGO

E-Mail: [jmoncus@bcn2013.com](mailto:jmoncus@bcn2013.com)

## 2. Events

Men	High Diving	27 m
Women	High Diving	20 m



### 3. Travel & Visa

#### Travel

Day	Event
July 19 <sup>th</sup>	Arrival THDC (Niki Stajkovic, Joey Zuber, Orlando Duque)
July 24 <sup>th</sup>	Arrival Divers / Judges / THDC (Claudio De Miro)
August 1 <sup>st</sup> or 2 <sup>nd</sup>	Departure Divers / Judges / THDC

Please kindly note that FINA will be covering your travel expenses (economy fare), therefore please send us your travel expenses and itinerary for approval prior to booking your ticket. Please send us the original invoice for reimbursement as requested by the FINA Auditors. Please also note that FINA may book your ticket for you. In this case, please inform us of your departure airport.

For your travel arrangements please contact the FINA Office:  
Angela Dubuis [fina.competitions@fina.org](mailto:fina.competitions@fina.org)

Athletes, Judges and Delegates will have transfer from and to the Barcelona Airport.

Local Transportation will be organised by the OC. The Venue is also within walking distance of the hotel.

#### Visa

Explanation on the visa you will find on the FINA Website under the following link:  
[http://www.fina.org/H2O/index.php?option=com\\_content&view=article&id=3224&Itemid=1370](http://www.fina.org/H2O/index.php?option=com_content&view=article&id=3224&Itemid=1370)

#### 4. Accommodation

According to your travel dates, FINA will arrange your accommodation.

Regarding the arrangements of accommodation for an accompanying person, please contact the FINA Office ([fina.competitions@fina.org](mailto:fina.competitions@fina.org)).

##### **TRYP Apolo 4\***

Avinguda del Paral·lel, 57-59  
08001 Barcelona  
SPAIN

Phone: +34-93 343 30 00  
Fax: +34-93 443 0059  
E-Mail: [tryp.apolo@melia.com](mailto:tryp.apolo@melia.com)

<http://www.tryphotels.com/en/tryp-apollo-hotel-barcelona-spain.html>



It is about a 30min walk from the hotel to the Athletes' zone.

#### 5. Registration & Accreditation

Registration is done through the National Federation.

Accreditation will be provided for the diver and one (1) coach.

#### 6. Costs

##### **Athletes:**

Covered: Flights, Accommodation with full board, Local Transportation, Accreditation

##### **Coach (not mandatory):**

Covered: Accommodation with full board, Local Transportation, Accreditation  
Maximum one (1) coach per athlete.

## 7. Meetings, Rehearsals & Dive Sheets

Day	Event	Schedule	Place
July 24 <sup>th</sup>	(1) THDC-Meeting – tbc	17 hours	Venue
July 25 <sup>th</sup>	(2) Athletes' Briefing	10 hours	Venue
	(3) Scuba Safety Briefing/ Rehearsal	from 18 hours	Venue
July 26 <sup>th</sup>	(4) Crisis Meeting	18 hours	Venue
	(5) Lucky Draw	19 hours	Diving Venue
July 27 <sup>th</sup>	(6) Technical Meeting	10 hours	PMM*
July 28 <sup>th</sup>	Dive Sheets Men to be submitted	until 16:00 hours	Box in Athletes' Area
July 29 <sup>th</sup>	Dive Sheets Women to be submitted	until 16:00 hours	Box in Athletes' Area

\* PMM: Piscina Municipal de Montjuic – Transport will be organised

### (1) THDC Meeting

THDC-Commission

### (2) Athletes' Briefing:

Athletes, OC, THDC

Topics: Platform, Weather, Safety, Rules, Schedule, Event, Questions

### (3) Scuba Safety Briefing/Rehearsal:

Safety Team (all scuba divers, coordinator of scuba divers, jetski drivers, boat drivers, ambulance staff: doctors & paramedics), OC High Diving, THDC: Joey Zuber, Niki Stajkovic, Translator (engl-esp)

The ambulance staff can be present in the beginning of the meeting.

### (4) Crisis Meeting:

OC & THDC

Topics: Communication, delays, weather etc.

### (5) Lucky Draw:

OC, THDC, Athletes

Each diver will have to dive from the 10m Platform and dive to the bottom of the pool to draw a number, which will be the starting order.

### (6) Technical Meeting:

OC, THDC, Athletes, Coaches, Judges



## 8. Training & Competition

Day	Event	Schedule	Place
July 25 <sup>th</sup>	Training lower heights*	15:00-18:00	Venue
July 26 <sup>th</sup>	Training lower heights*	15:00-18:00	Venue
July 27 <sup>th</sup>	Practice Women 20m	15:00-16:15 hours	Venue
	Practice Men 27m	16:30-18:30 hours	Venue
July 28 <sup>th</sup>	Practice Women 20m	15:00-16:15 hours	Venue
	Practice Men 27m	16:30-18:30 hours	Venue
July 29 <sup>th</sup>	Practice Women 20m	14:00-15:00 hours	Venue
	Warm up Men 27m	15:00-15:30 hours	Venue
	<b>Competition Men</b>	16:00-18:00 hours	Venue
July 30 <sup>th</sup>	Warm up Women 20m	15:00-15:30 hours	Venue
	<b>Competition Women</b>	16:00-17:00 hours	Venue
	Victory Ceremony	Following Competition	Venue
	Practice Men 27m	17:30-18:30 hours	Venue
July 31 <sup>st</sup>	Warm up Men 27m	15:00-15:30 hours	Venue
	<b>Competition Men</b>	16:00-18:00 hours	Venue
	Victory Ceremony	Following Competition	Venue

\* 5m and 10m platform available at the Venue

### Trainings Competition Heights:

Safety Teams & Judges have to be present.

## 9. Medical Arrangements

### Athletes Clinic:

- 1 Orthopaedic Doctor
- 1 Emergency Doctor
- 1 Nurse
- 1 Administrative Person
- 3 Physiotherapists

The clinic will be supplied with equipment to support and stabilize injured athletes. When the medical criteria decide it, the injured athlete will be move to the Hospital del Mar as the first choice and Hospital Clinic as a second choice. Both Hospitals are already incorporated into our system and will be informed previously. Everything will be coordinated by Our Medical Coordinating Center (CECOS).

### Medical Services located in Water:

- 4 Scuba lifeguard education
- 2 Jet skies

### Ambulances

- 2 ICU (1 Doctor + 1 nurse + Paramedic)

## 10. Participants

### Men's High Diving selection

The following 14 men have qualified + 2 reserves:

- ALDRIDGE Blake (GBR)
- COLTURI David (USA)
- DE MOND Kent (USA)
- COWEN Matt (GBR)
- DUQUE Orlando (COL)
- FERZULI Jorge (MEX)
- HUNT Garry (GBR)
- KOLANUS Kris (POL)
- LOBUE Steve (USA)
- NAVRATIL Michal (CZE)
- OUMEDJKANE Cyrille (FRA)
- PAREDES Jonathan (MEX)
- SHABOTENKO Anatoliy (UKR)
- SILCHENKO Artem (RUS)

Reserve 1: KOHL Alain (LUX)

### Women's High Diving selection

The following women have been invited:

- BADER Anna (GER)
- CARLTON Cesile (USA)
- DE LIMA Stephanie (CAN)
- HUBER Ginger (USA)
- HYER TIRA Tara (USA)
- TOMLINA Diana (UKR)

## 11. Judges

- ARBON Jeff (AUS)
- DE MIRO Claudio (ITA) – FINA THDC – Head Judge
- GROVE Ken (AUT)
- LLINAS Julian (ESP) – FINA TDC
- LOUGANIS Greg (USA)
- MARTINEZ Antonio (MEX)
- MASSENZ Sara (ITA)
- PIPER Anke (GER) – FINA TDC



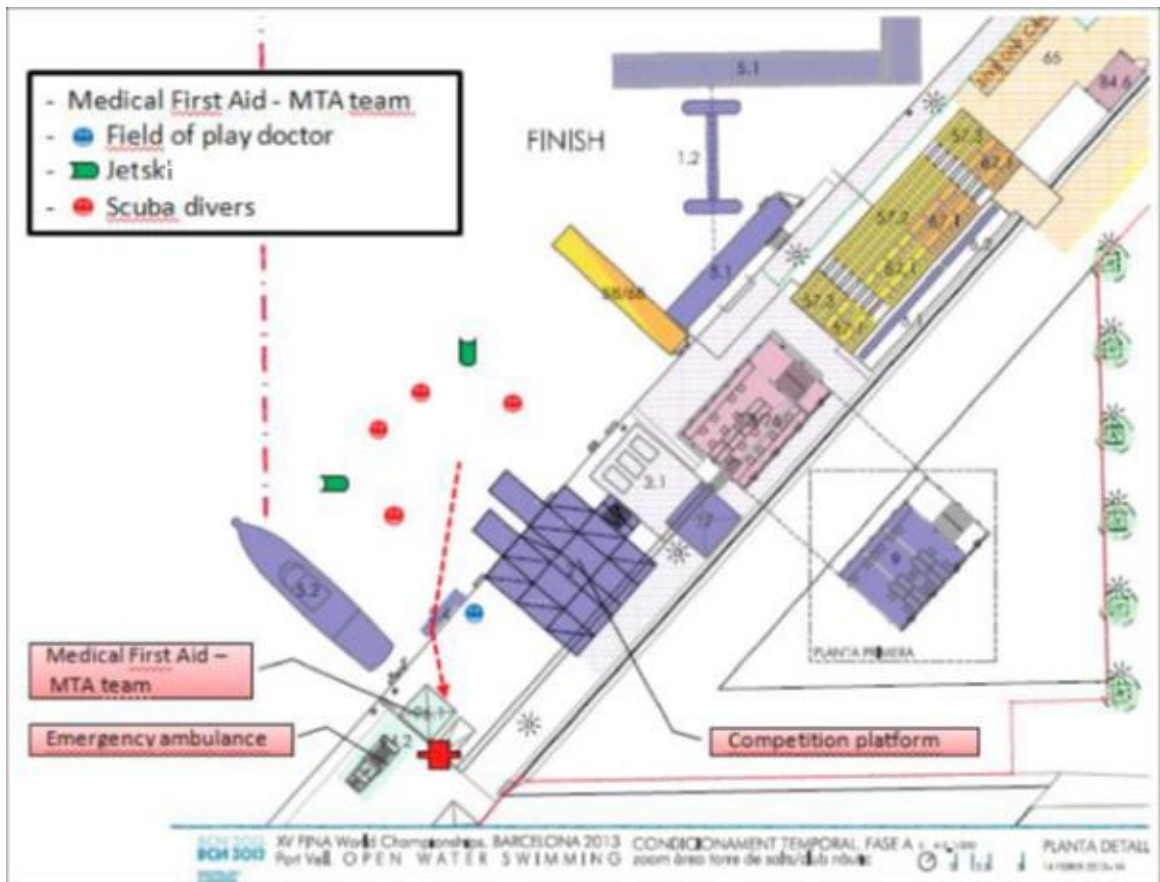
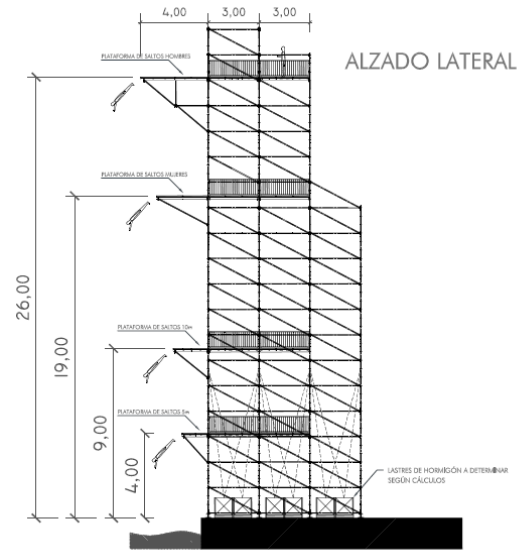
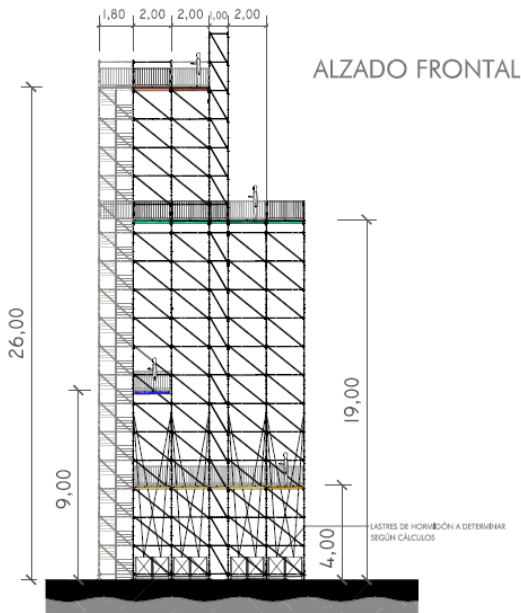
## 12. Site & Facilities



Barcelona Harbour  
Site of the High Diving and Open Water Swimming Events



Barcelona Old Harbour  
Place of the High Diving Tower





### 13. Advertising Rules

Advertising identification appearing on swimwear, pool deck equipment and officials' uniforms:

**Swimsuits:** (measurements are in square centimetres: cm<sup>2</sup>)

- One (1) flag and one (1) country name or code of a maximum of 30cm<sup>2</sup> when worn.
- Two (2) sponsor's logo of a maximum of 30cm<sup>2</sup> when worn.

#### Pool deck equipment (Awarding Ceremony)

- Two (2) advertising identifications of two sponsors are permitted, with a maximum size of 40cm<sup>2</sup> each when worn for any of the clothing items listed below.

Identification on clothing must be placed on the top breast side so that Bibs requested by FINA may be worn well visible below.

For upper-body clothing items only, the manufacturer's logo (being a design mark of maximum of 8cm in width) may additionally be displayed in the form of a strip in one of the following positions:

- a) around the bottom of both sleeves; or
- b) centered down the outer seam of both sleeves (from the collar across the top of the shoulders down to the bottom of the sleeve).

For lower-body clothing items only, the manufacturer's logo (being a design mark of maximum of 8cm in width) may additionally be displayed in the form of a strip centered down the outer seam of both legs (from the waistband down to the bottom of the leg).

- |   |                                     |
|---|-------------------------------------|
| • T-shirt (40cm <sup>2</sup> )  | • Skirts (40 cm <sup>2</sup> )      |
| • Polo shirt (40cm <sup>2</sup> )   | • Windbreaker (40cm <sup>2</sup> )  |
| • Casual shirt (40cm <sup>2</sup> )   | • Towels (6cm <sup>2</sup> )        |
| • Sweat shirt (40cm <sup>2</sup> )  | • Baseball caps (6cm <sup>2</sup> ) |
| • Bath robe (40cm <sup>2</sup> )  | • Hats (6cm <sup>2</sup> )          |
| • Tracksuit top (40cm <sup>2</sup> )  | • Socks (6cm <sup>2</sup> )         |
| • Pants (40cm <sup>2</sup> )  | • Footwear (6cm <sup>2</sup> )      |
| • Shorts (40cm <sup>2</sup> )   |                                     |
| • Bags (not greater than 10% of the surface area of the item, to a maximum size of 6cm <sup>2</sup> ) |                                     |

For questions regarding the Advertising Rules, please contact the FINA Marketing Department:  
[marketing@fina.org](mailto:marketing@fina.org)



## 14. Rules and Regulations

### Men: Competition Format & Rules

Dives: 5 dives

Day 1: 1 required and 1 intermediate dive

Day 2: 1 required and 2 optional dives

Required dives: Have a DD limit of 3.8, the dives must match the 3.8 DD or be above it to receive 3.8, for example a dive with a DD of 3.6 will only receive 3.6. The two required dives must be from different take off positions.

Front, back, reverse, inward and armstand.

Intermediate dive: Has a DD limit of 4.1. The dive must match the 4.1 DD or be above it to receive 4.1, if for example a dive with a DD of 3.9 will only receive 3.9. The athlete can do any dive from the 9 groups, none of the rules of take-off positions and the dive groups apply to the Intermediate dive.

Optional dives: The two optional dives must be from different groups from the 9 Front, back, reverse, inward, front twists, back twists, reverse twists, inward twists and all arm stand dives.

### Men: General Dive Requirements

1. Divers perform 5 dives from a height of 27m (plus or minus 1m can be adjusted). There are a total of nine groups. Front, back, reverse, inward, front twists, back twists, reverse twists, inward twists and all arm stand dives.
2. The two required dives must be performed from different take off positions. There are 5 take off positions (front, back, reverse, inward and armstand). The degree of difficulty for each required dive is 3.8. To clarify: Front double half twist and front double 11/2 twist are different groups, but the same take off position. DD limit of 3.8. The dive must match the 3.8 DD or be above it to receive 3.8, for example a dive with a DD of 3.6 will only receive 3.6. The two required dives must be from different take off positions. Front, back, reverse, inward and armstand.
3. Intermediate dive: Has DD limit of 4.1. The dive must match the 4.1 DD or be above it to receive 4.1, if for example a dive with a DD of 3.9 will only receive 3.9. The athlete can do any dive from the 9 groups, none of the rules of take-off positions and the dive groups apply to the Intermediate dive.
4. Optional dives: The 2 dives must be from different groups from the 9 Front, back, reverse, inward, front twists, back twists, reverse twists, inward twists and all arm stand dives.
5. Starting Order: The starting order shall be determined by a lucky draw before the first day of competition.

Day 1: One required and one intermediate dive. The dive order will remain the same for both rounds.



Day 2: One required and two optional dives. There will be a reverse starting order, which is determined by the total score of the two dives from Day 1. The lowest score goes first and the highest score goes last etc.

The final round will be in reverse order determined by the total score of the four dives from Day 1 and 2. Once again the lowest score goes first and the highest score goes last etc.

6. A list of dives for each diver shall consist of two required dives with a degree of difficulty for every athlete (3.8), one intermediate dive with a degree of difficulty of (4.1) and two optional dives assigned a degree of difficulty computed from the 2010 HDA table.
7. The divers can change the second optional dive after the fourth round. The head judge has to be notified five minutes after the end of the fourth round. None of the dives can be repeated. If a diver repeats his optional dive then a penalty applies to the second dive, which will be given a maximum DD of 3.8. In addition should the group of the two optional dives be the same, the maximum DD is 3.8.
8. Balks will receive a 2 point deduction from each judge for the first balk. Another 2 point deduction for the second balk and be considered a failed dive on the third balk. A balk is considered an interruption in movement after the diver does his press immediately before the dive. For arm stand dives it is the point when both feet leave the platform (use FINA definitions).
9. Running take offs on forward dive groups (including twists) are allowed, given there is enough space for the approach.
10. If the diver enters the water with his hands up on a feet first entry, he can only receive a maximum score of 5 points by each judge (Head Judge will announce this to other judges). Judges keep in mind that the 5 points would mean a perfect execution of the entire dive with the exception of the arms. If arms are at or below shoulder height but not in alignment with the body (straight arms either in front or on the side of the body), judges can deduct between 1/2 to 2 points at their discretion according to the degree of the mistake.
11. A break in position at or just before entry can have a deduction of 1/2 to 2 points at the judge's discretion. An intermediate break of position can receive no more than 4.5 points by each judge (Head Judge will announce this to other judges). If a dive is done in a completely different position than announced: for example back triple tuck instead of back triple pike, the dive can only receive a maximum of 2 points.
12. All dives submitted in a list must consist of at least 180 degrees of rotation around a horizontal axis.
13. Otherwise general diving rules and guidelines set by FINA apply.



## Women: Competition Format & Rules

Dives: 3 dives

One day: 1 required and 2 optional dives

Required dive: 1 dive from any of the 9 groups: Front, back, reverse, inward, front twists, back twists, reverse twists, inward twists and all arm stand dives. DD limit 2.6. The dive must match the 2.6 DD or be above it to receive 2.6, for example a dive with a DD of 2.5 will only receive 2.5.

Optional dives: 2 dives must be from different groups from the 9 Front, back, reverse, inward, front twists, back twists, reverse twists, inward twists and all arm stand dives.

None of the dives can be repeated. If the athlete repeats the optional dive then a penalty applies to the 2nd dive, which will be given a maximum DD of 2.6. In addition should the group of the two optional dives be the same, the maximum DD is 2.6

Note that the DD for the woman's competition will add only 1.0 to the FINA table.

## Women: General Dive Requirements

1. Divers perform 3 dives from a height of 20m. There are a total of nine groups. Front, back, reverse, inward, front twists, back twists, reverse twists, inward twists and all arm stand dives.
2. 1 dive must be from different groups from the 9 Front, back, reverse, inward, front twists, back twists, reverse twists, inward twists and all arm stand dives. DD limit of 2.6. The dive must match the 2.6 DD or be above it to receive 2.6, for example a dive with a DD of 2.5 will only receive 2.5.
3. Optional dives: 2 dives must be from different groups from the 9 Front, back, reverse, inward, front twists, back twists, reverse twists, inward twists and all arm stand dives.
4. A list of dives for each diver shall consist of one required dive with degree of difficulty of (2.6), and two optional dives assigned a degree of difficulty computed from the 2010 HDA table.
5. Starting Order: The starting order shall be determined by a lucky draw before the first day of competition.

Competition: One required and two optional dives.

The final round will be in reverse starting order, which is determined by the total score of the first two rounds. The lowest score goes first and the highest score goes last etc.

6. The divers can change the second optional dive after the second round. The head judge has to be notified five minutes after the end of the second round. None of the dives can be repeated. If a diver repeats her optional dive then a penalty applies to the second dive, which will be given a maximum DD of 2.6. In addition should the group of the two optional dives be the same, the maximum DD is 2.6.



7. Balks will receive a 2 point deduction from each judge for the first balk. Another 2 point deduction for the second balk and be considered a failed dive on the third balk. A balk is considered an interruption in movement after the diver does her press immediately before the dive. For arm stand dives it is the point when both feet leave the platform (use FINA definitions).
8. Running take offs on forward dive groups (including twists) are allowed, given there is enough space for the approach.
9. If the diver enters the water with his hands up on a feet first entry, she can only receive a maximum score of 5 points by each judge (Head Judge will announce this to other judges). Judges keep in mind that the 5 points would mean a perfect execution of the entire dive with the exception of the arms. If arms are at or below shoulder height but not in alignment with the body (straight arms either in front or on the side of the body), judges can deduct between 1/2 to 2 points at their discretion according to the degree of the mistake.
10. A break in position at or just before entry can have a deduction of 1/2 to 2 points at the judge's discretion. An intermediate break of position can receive no more than 4.5 points by each judge (Head Judge will announce this to other judges). If a dive is done in a completely different position than announced: for example back triple tuck instead of back triple pike, the dive can only receive a maximum of 2 points.
11. All dives submitted in a list must consist of at least 180 degrees of rotation around a horizontal axis.
12. Otherwise general diving rules and guidelines set by FINA apply.

**HIGH DIVING DD TABLE MEN & WOMEN**

Group 1: Front dives			
Dive n.	Description of dive	DD	
		27 m	20 m
101A	swan dive	4.1	3.1
102E	front 1 ss 3 position	3.7	2.7
102C	front 1 ss tuck	3.7	2.7
112C	flying front 1 ss tuck	3.9	2.9
112B	flying front 1 ss pike	4.0	3.0
103B	front 1 1/2 ss pike	4.1	3.1
113B	flying front 1 1/2 ss pike	4.3	3.3
104C	front 2 ss tuck	3.7	2.7
104B	front 2 ss pike	3.9	2.9
114C	flying front 2 ss tuck	3.9	2.9
114B	flying front 2 ss pike	4.1	3.1
5141C	front 2 ss with 1/2 twist tuck	3.5	2.5
5141B	front 2 ss with 1/2 twist pike	3.6	2.6
5141C!	flying front 2 ss with 1/2 twist tuck	3.7	2.7
5141B!	flying front 2 ss with 1/2 twist pike	3.8	2.8
105B	front 2 1/2 ss pike	4.8	3.8
115B	flying front 2 1/2 ss pike	5.1	4.1
106C	front 3 ss tuck	4.4	3.4
116C	flying front 3 ss tuck	4.7	3.7
5161C	front 3 ss with 1/2 twist tuck	4.1	3.1
5161B	front 3 ss with 1/2 twist pike	4.3	3.3
5161C!	flying front 3 ss with 1/2 twist tuck	4.4	3.4
108C	front 4 ss tuck	5.1	
5181C	front 4 ss with 1/2 tuck	4.7	
5181B	front 4 ss with 1/2 twist pike	5.0	
51(10)1C	front 5 ss with 1/2 twist tuck	5.7	
51(10)1B	front 5 ss with 1/2 twist pike	6.1	

Group 2: Back dives			
202C	back 1 ss tuck	3.7	2.7
202B	back 1 ss pike	3.8	2.8
202A	back 1 ss layout	3.9	2.9
202E	back 1 ss 3 positions	3.9	2.9
212C	flying back 1 ss tuck	3.8	2.8
212B	flying back ss pike	3.9	2.9
204C	back 2 ss tuck	3.9	2.9
204B	back 2 ss pike	4.2	3.2
204A	back 2 ss layout	4.4	3.4
206C	back 3 ss tuck	4.7	3.7
206B	back 3 ss pike	4.9	3.9
208C	back 4 ss tuck	5.3	
208B	back 4 ss pike	5.6	
210C	back 5 ss tuck	6.2	
210B	back 5 ss pike	6.5	

Group 3: Reverse dives			
312B	flying reverse 1 ss pike	4.0	3.0
302E	reverse 1 ss 3 position	3.8	2.8
302C	reverse 1 ss tuck	3.8	2.8
302B	reverse 1 ss pike	3.9	2.9
302A	reverse 1 ss layout	4.0	3.0
302C	reverse 2 ss tuck	4.0	3.0
302B	reverse 2 ss pike	4.3	3.3
306C	reverse 3 ss tuck	4.7	
306B	reverse 3 ss pike	4.9	
308C	reverse 4 ss tuck	5.3	
308B	reverse 4 ss pike	5.6	
310C	reverse 5 ss tuck	6.4	
310B	reverse 5 ss pike	6.7	





Group 4: Inward dives			
402C	inward 1 ss tuck	3.5	2.5
404C	inward 2 ss tuck	4.0	3.0
404B	inward 2 ss pike	4.3	3.3
414C	flying inward 2 ss tuck	4.5	3.5
5441C	inward 2 ss with 1/2 twist tuck	3.8	2.8
5441B	inward 2 ss with 1/2 twist pike	4.0	3.0
5441C!	flying inward 2 ss w 1/2 twist tuck	4.3	3.3
406C	inward 3 ss tuck	4.8	
406B	inward 3 ss pike	5.1	
5461C	inward 3 ss w 1/2 twist tuck	4.5	
5461B	inward 3 ss w 1/2 twist pike	4.8	
407B	inward 3 1/2 ss pike	6.0	
5481C	inward 4 ss with 1/2 twist tuck	5.2	
5481B	inward 4 ss with 1/2 twist pike	5.5	

Group 5: Front twists dives			
5122D	front 1 ss 1 twist free	4.3	3.3
5142D	front 2 ss with 1 twist free	4.4	3.4
5143D	front 2 ss with 1 1/2 twists free	4.1	3.1
5144D	front 2 ss with 2 twists free	4.9	3.9
5145D	front 2 ss with 2 1/2 twists free	4.5	3.5
5146D	front 2 ssw 3 twists free	5.5	
5147D	front 2 ss with 3 1/2 twists free	5.0	
5149D	front 2 ss with 4 1/2 twists free	5.4	
5162C	front 3 ss with 1 twist tuck	5.1	
5162B	front 3 ss with 1 twist pike	5.4	
5163C	front 3 ss with 1 1/2 twists tuck	4.7	
5163B	front 3 ss with 1 1/2 twists pike	4.9	
5165C	front 3 ss with 2 1/2 twists tuck	5.1	
5165B	front 3 ss with 2 1/2 twists pike	5.3	
5167C	front 3 ss with 3 1/2 twists tuck	5.6	
5167B	front 3 ss with 3 1/2 twists pike	5.8	
5183B	front 4 ss with 1 1/2 twists pike	5.6	

Group 6: Back twists dives			
5222D	back 1 ss with 1 twist free	4.0	3.0
5241C	back 2 ss with 1/2 twist tuck	4.3	3.3
5241B	back 2 ss with 1/2 twist pike	4.4	3.4
5242D	back 2 ss with 1 twist free	4.0	3.0
5244D	back 2 ss with 2 twists free	4.4	3.4
5246D	back 2 ss with 3 twists free	4.8	
5248D	back 2 ss with 4 twists free	5.3	
524(10)D	back 2 ss with 5 twists free	5.7	
5261C	back 3 ss with 1/2 twist tuck	4.8	
5261B	back 3 ss with 1/2 twist pike	5.1	
5262C	back 3 ss with 1 twist tuck	4.4	
5262B	back 3 ss with 1 twist pike	4.6	
5264C	back 3 ss with 2 twists tuck	5.0	
5264B	back 3 ss with 2 twists pike	5.2	
5266B	back 3 ss, 3 twists pike	5.6	
5268B	back 3 ss with 4 twists pike	6.3	
5282C	back 4 ss with 1 twist tuck	4.9	
5282B	back 4 ss with 1 twist pike	5.2	
5284B	back 4 ss with 2 twist pike	5.9	

Group 7: Reverse twists dives			
5322D	reverse 1 ss with 1 twist free	4.1	3.1
5342D	reverse 2 ss with 1 twist free	4.1	3.1
5344D	reverse 2 ss with 2 twists free	4.5	3.5
5346D	reverse 2 ss with 3 twists free	4.9	
5348D	reverse 2 ss with 4 twists free	5.4	
534(10)	reverse 2 ss with 5 twist free	5.8	
5362C	reverse 3 ss with 1 twist tuck	4.4	
5362B	reverse 3 ss with 1 twist pike	4.6	

Group 8: Inward twists dives			
5443D	inward 2 ss with 1 1/2 twist free	4.3	3.3
5445D	inward 2 ss with 2 1/2 twists free	4.7	
5447D	inward 2 ss with 3 1/2 twists free	5.4	
5463C	inward 3 ss with 1 1/2 twists tuck	4.9	
5463B	inward 3 ss with 1 1/2 twists pike	5.2	



Group 9: Armstand dives			
611B	front armstand 1/2 ss pike	3.9	2.9
6131B	front armst. 1 1/2 ss with 1/2 twist pike	3.9	2.9
6151B	front armst.2 1/2 ss with 1/2 twist pike	4.4	3.4
6151C	front armst.2 1/2 ss with 1/2 twist tuck	4.1	3.1
6171B	front armst.3 1/2 ss with 1/2 twist pike	5.3	
6171C	front armst.3 1/2 ss with 1/2 twist tuck	5.1	
621A	back armstand 1/2 ss layout	3.9	2.9
621B	back armstand 1/2 ss pike	3.8	2.8
621C	back armstand 1/2 ss tuck	3.6	2.6
623A	back armstand 1 1/2 ss layout	4.3	3.3
623B	back armstand 1 1/2 ss pike	4.2	3.2
623C	back armstand 1 1/2 ss tuck	4.0	3.0
625C	back armstand 2 1/2 ss tuck	4.5	
627C	back armstand 3 1/2 ss tuck	5.3	
631A	reverse armstand 1/2 ss layout	4.0	3.0
631B	reverse armstand 1/2 ss pike	3.9	2.9
631C	reverse armstand 1/2 ss tuck	3.7	2.7
633B	reverse armstand 1 1/2 ss pike	4.3	3.3
633C	reverse armstand 1 1/2 ss tuck	4.1	3.1
635C	reverse armstand 2 1/2 ss tuck	4.6	
637C	reverse armstand 3 1/2 ss tuck	5.4	
6133D	front armstand 1 1/2 ss with 1 1/2 twists	4.6	
6135D	front armstand 1 1/2 ss with 2 1/2 twists	4.9	
6153C	front armst. 2 1/2 ss with 1 1/2 twists tuck	5.0	
6153B	front armst. 2 1/2 ss with 1 1/2 twists pike	5.1	
6153D	front armst. 2 1/2 ss with 1 1/2 twists free	5.1	
6155D	front armst. 2 1/2 ss with 2 1/2 twists free	5.4	
6173C	front armst. 3 1/2 ss with 1 1/2 twists tuck	5.9	
6232D	back armstand 1 1/2 ss with 1 twist free	3.8	2.8
6252C	back armstand 2 1/2 ss with 1 twist tuck	4.4	
6252B	back armstand 2 1/2 ss with 1 twist pike	4.7	
6253D	back armstand 2 1/2ss with 1 1/2 twists free	5.7	
6254D	back armstand 2 1/2 ss with 2 twists free	5.2	
6255D	back armstand 2 1/2ss with 2 1/2 twists free	6.1	
6256D	back armstand 2 1/2 ss with 3 twists free	5.6	
6258D	back armstand 2 1/2 ss with 3 twists free	6.3	
6272C	back armstand 3 1/2 ss with 1 twist tuck	5.2	
6272B	back armstand 3 1/2 ss with 1 twist pike	5.4	

How to calculate D.D.	
1.	Taking the reference dive from 10 m platform in the FINA Table
2.	Add 2,0 from 27 m and 1,0 from 20 m
3.	Add 0,5 in head first entry
4.	Add in the blind entry dives the trick bonus
Trick bonus in the blind entry dives	
B position	+ 0,1
A Position	+ 0,2
C - D position	no bonus
A standing full ss.	is considered 1 trick
The 1st 1/2 ss of an armstand	is considered 1 Trick
Each full twist on front and inward take-off	is considered 1 Trick
The 1st 1/2 twist of a back or reverse twist and of a back armstand	is considered 1 Trick
Agenda	
A	Layout position
B	Pike position
C	Tuck position
D	Free position
E	Three position
!	Flying position

## Judging

7 Judges

2 highest and 2 lowest scores will be deleted. The remaining 3 scores will be added and multiplied by the DD.